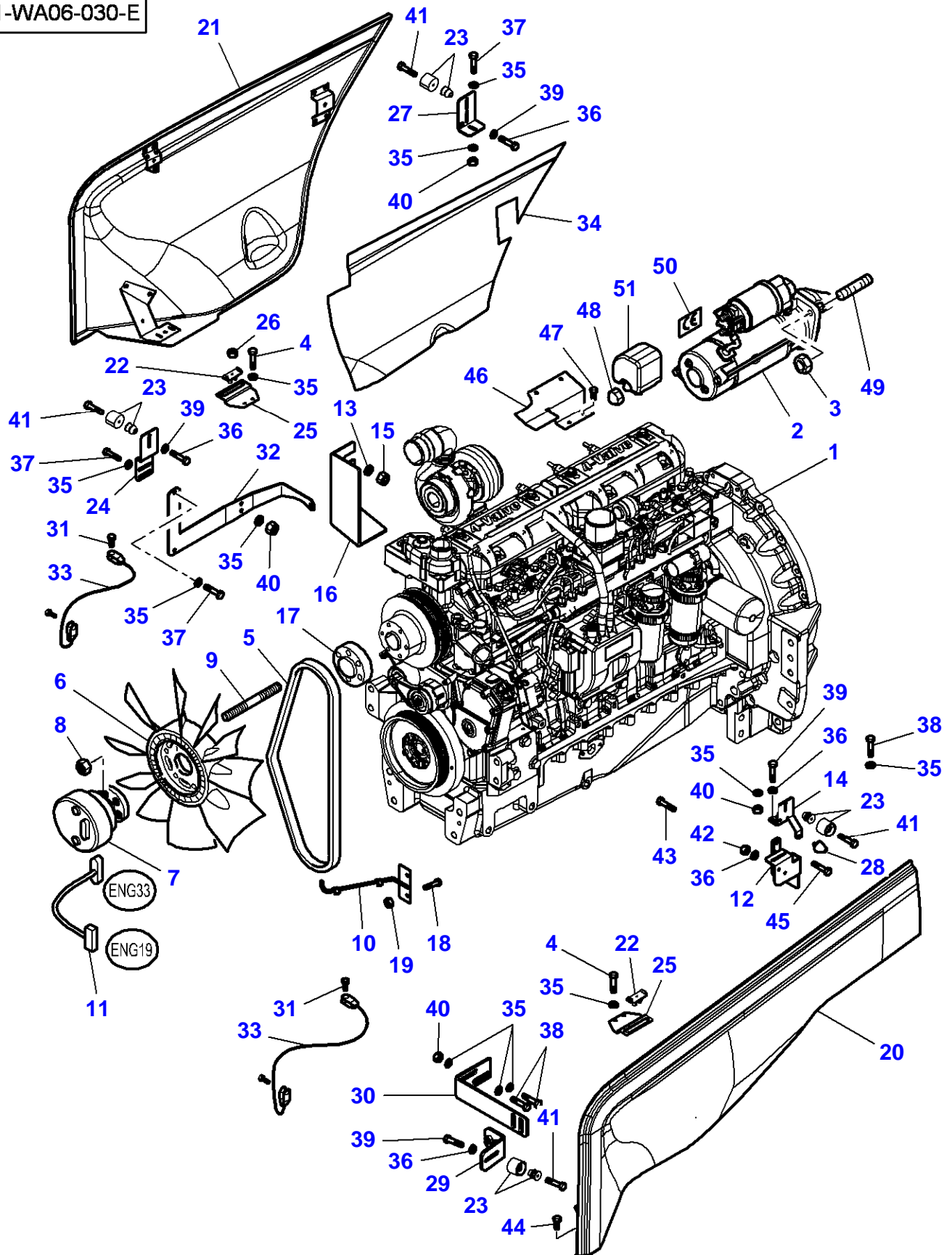


Page Title	Page Number
Engine & Equipment - Up to Serial or Engine Number - T021081	010-0005
Engine & Equipment - From T021082 - Guards - Left Side	010-0010
Engine & Equipment - From T021082 - Guards - Right Side	010-0015
Alternator & Bracket	010-0020
Alternator - 150 Amp	010-0025
Starter - Up To S/N S051055 - Except Tractor S/N S039058	010-0030
Starter - From S/N S051056 - Except Tractor S/N S039058	010-0035
Cylinder Block	010-0040
Timing Gear Housing	010-0045
Crankshaft, Piston & Connecting Rods	010-0050
Valve Mechanism And Camshaft	010-0055
Cylinder Head	010-0060
Cylinder Head Cover - UP TO U1010 MF8450 & UP TO U1961 MF8460	010-0065
Cylinder Head Cover - From U1011 MF8450 & From U1962 MF8460	010-0070
Oil Sump	010-0075
Lubricating Oil Cooler And Filter	010-0080
Water Pump	010-0085
Injection System	010-0090
Low Pressure Fuel System	010-0095
Air Induction & Exhaust	010-0100
Turbocharger - Pipes	010-0105
Electronic Engine Management - UP TO U1010 MF8450 & UP TO U1961 MF8460	010-0110
Electronic Engine Management - From U1011 MF8450 & From U1962 MF8460	010-0115
Engine Repair Kits - Piston- Cylinder Head With Valves	010-0120
Engine Gaskets Sets	010-0125
Heater Engine Block - 110 V	010-0130
Heater Engine Block - 220 V	010-0135
Centrifugal Oil Filter	010-0140
Cab Heating System - Engine Part	010-0145
Fuel Tank & Attachments	010-0150
Additional Tank	010-0155
Fuel Pipes	010-0160
Fuel System	010-0165
Batteries And Cables - Without Battery Cut-Off W/O Positive Connection	010-0170
Batteries And Cables - Without Battery Cut-Off With Positive Connection	010-0175
Batteries And Cables - With Battery Cut-Off	010-0180
Cooling System - Air Conditioned Installation	010-0185
Compressor	010-0190
Cooling System - Engine	010-0195
Cooling System - Engine	010-0200
Air Cooler	010-0205
Air Filter - Dry - Dual Element	010-0210
Air Filter - Dry - Dual Element	010-0215
Vertical Exhaust On The Side	010-0220
Throttle Controls	010-0225
Throttle Controls	010-0230

1-WA06-030-E



## Engine &amp; Equipment - Up to Serial or Engine Number T021081

Item	Part Number	Qty	Description	Comments
1	V835061164	1	Engine	[A] Up to Serial or Engine Number R345035 MF 8450 74 CTA
	V865061164X	1	Short Engine	[C] Up to Serial or Engine Number R345035 MF 8450
	V835076118	1	Engine	[A] From Serial or Engine Number R345036 MF 8450 74 CTA
	V865061744X	1	Short Engine	[C] Replace and repair. Old not interchangeable with new V835061744 From Serial or Engine Number R345036 MF 8450
	V835061165	1	Engine	[A] Up to Serial or Engine Number R348017 MF 8460 74 CTA
	V865061165X	1	Short Engine	[C] Up to Serial or Engine Number R348017 MF 8460
	V835076119	1	Engine	[A] From Serial or Engine Number R348018 MF 8460 74 CTA
	V865061745X	1	Short Engine	[C] Replace and repair. Old not interchangeable with new V835061745 From Serial or Engine Number R348018 MF 8460
2	3823621M91	1	Startermotor	[B,D] See Page - Reference Number 010-0030/1 Up to Serial or Engine Number S051055
	4288991M2	1	Startermotor	[B,D] From Serial or Engine Number S051056 See Page - Reference Number 010-0035/1
3	1441932X1	3	Nut Metric	M10
4	339009X1	4	Cap Screw	M8 X 35
5	<b>4284981M1</b>	1	Belt	Length 1824 MM
6	4274231M1	1	Fan	Diameter 650 MM
7	4276064M1	1	Clutch	
8	1441932X1	6	Nut Metric	M10
9	3011353X1	6	Stud	M10 X 52
10	4276881M4	1	Support	
11	4272811M4	1	Harness	
12	4284510M3	1	Support	
13	390734X1	2	Flat Washer	
14	4281581M1	1	Support	
15	1441932X1	2	Nut Metric	M10
16	4276812M4	1	Cowl	
17	4270818M1	1	Spacer	Thickness 30 MM
18	339560X1	2	Cap Screw	M6 X 16
19	339030X1	2	Nut	M6
20	4275844P92	1	Panel	Left Hand
21	4276108P92	1	Panel	Right Hand
22	3800376M1	2	Buffer	
23	72502409	4	Rubber	
24	4270244M5	1	Support	
25	4288360M1	2	Support	
26	3010021X1	2	Rivet	
27	4270260M2	1	Support	
28	3780947M1	1	Stop	
29	4270673M2	1	Support	
30	4273770M2	1	Support	
31	339560X1	4	Cap Screw	M6 X 16
32	4281865M2	1	Support	
33	3783347M2	2	Cable	
34	4275845M1	1	Protection.	
35	390972X1	22	Flat Washer	Diameter 8-17 X 1,7
36	390971X1	X	Flat Washer	Diameter 6-12 X 1,5
37	339124X1	5	Cap Screw	M8 X 16

Engine & Equipment - Up to Serial or Engine Number T021081

Item	Part Number	Qty	Description	Comments
38	339761X1	6	Cap Screw	M8 X 25
39	391074X1	4	Cap Screw	M6 X 12
40	339169X1	7	Nut	M8
41	339804X1	4	Cap Screw	M6 X 25
42	339030X1	X	Nut	M6
43	339761X1	2	Cap Screw	M8 X 25
44	3010021X1	2	Rivet	
45	339159X1	2	Cap Screw	M8 X 65
46	4291061M2	1	Cowl	From Serial or Engine Number R327071
47	339124X1	3	Cap Screw	M8 X 16 From Serial or Engine Number R327071 Up to Serial or Engine Number S102002
48	3786092M1	1	Nut	
49	391005X1	3	Stud	M10 X 25 From Serial or Engine Number S051056
50	3788193M1	1	Label	
51	3786093M1	1	Protection.	

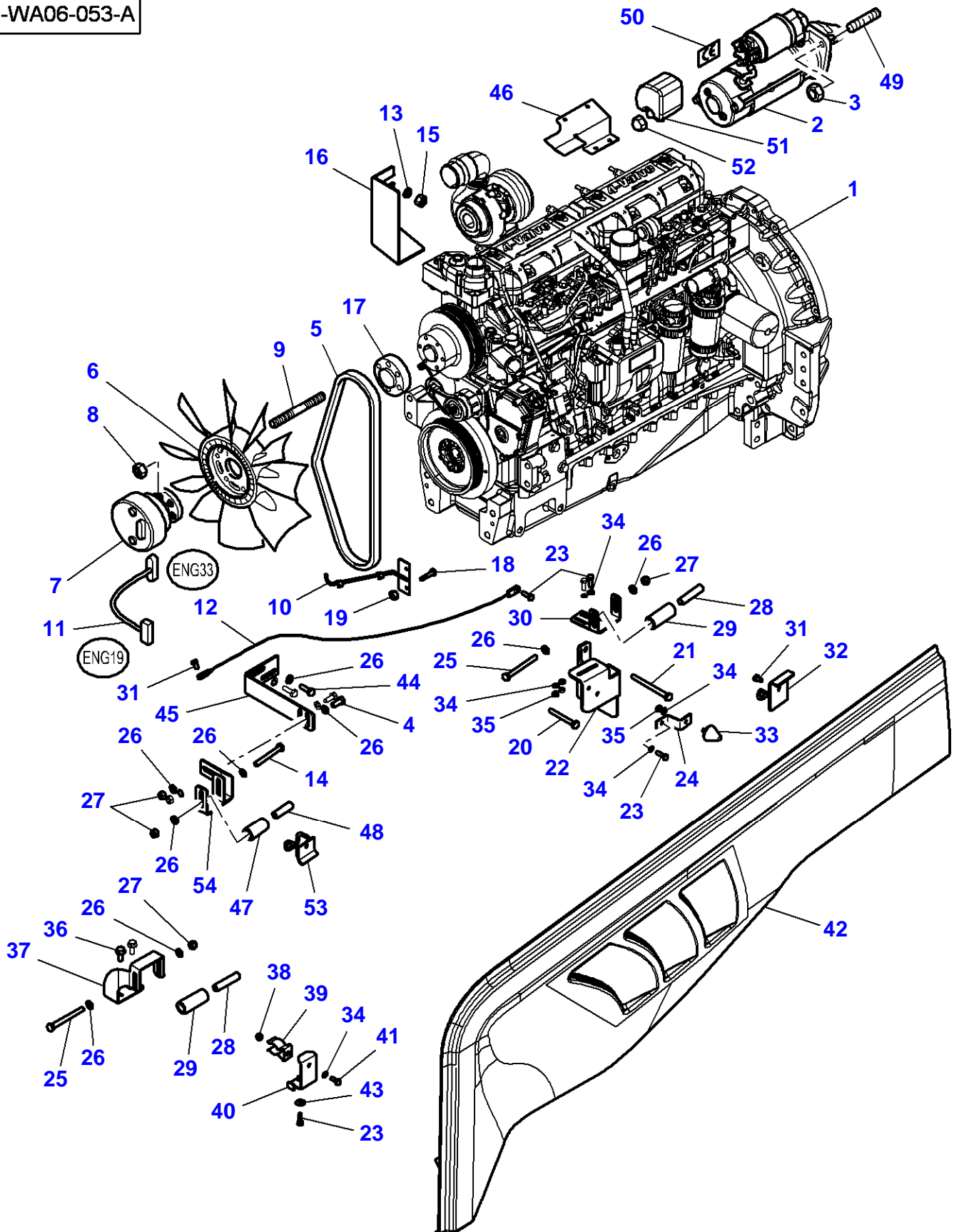
**FOOTNOTE [A]** INCLUDES FLYWHEEL

**FOOTNOTE [B]** THE APPROPRIATE SAFETY DECALS MUST BE ORDERED AND FITTED TO THIS PART

**FOOTNOTE [C]** NOT ILLUSTRATED

**FOOTNOTE [D]** EXCEPT TRACTOR NO S039058

1-WA06-053-A



## Engine &amp; Equipment - From T021082 - Guards - Left Side

Page010-0010

Item	Part Number	Qty	Description	Comments
1	V835076118	1	Engine	[A] MF 8450 74 CTA Replace and repair. Old not interchangeable with new V835061744
	V865061744X	1	Short Engine	[C] Up to Serial or Engine Number T022080 MF 8450
	V865076118X	1	Short Engine	[C] From Serial or Engine Number T022081 MF 8450
	V835076119	1	Engine	[A] MF 8460 74 CTA Replace and repair. Old not interchangeable with new V835061745
	V865061745X	1	Short Engine	[C] Up to Serial or Engine Number T036046 MF 8460
	V865076119X	1	Short Engine	[C] From Serial or Engine Number T036047 MF 8460
2	4288991M2	1	Startermotor	[B]
3	339402X1	3	Nut	M10
4	339123X1	2	Cap Screw	M8 X 20
5	<b>4284981M1</b>	1	Belt	Up to Serial or Engine Number T128080 Length 1824 MM
	<b>4296120M1</b>	1	Belt	From Serial or Engine Number T128081 Length 1815 MM
6	4274231M1	1	Fan	Diameter 650 MM
7	4276064M1	1	Clutch	
8	1441932X1	6	Nut Metric	M10
9	3011353X1	6	Stud	M10 X 52
10	4276881M4	1	Support	
11	4272811M4	1	Harness	
12	3783347M2	1	Cable	
13	390734X1	2	Flat Washer	
14	390246X1	1	Cap Screw	M8 X 70
15	1441932X1	2	Nut Metric	M10
16	4276812M4	1	Cowl	
17	4270818M1	1	Spacer	Thickness 30 MM
18	339560X1	2	Cap Screw	M6 X 16
19	339030X1	2	Nut	M6
20	339159X1	1	Cap Screw	M8 X 65
21	3015258X1	1	Cap Screw	M8 X 95
22	4284510M3	1	Support	
23	339666X1	5	Cap Screw	M6 X 20
24	4293019M1	1	Support	
25	391286X1	4	Cap Screw	M8 X 85
26	390972X1	16	Flat Washer	
27	394367X1	5	Locknut	M8
28	4289823M1	2	Spacer	Diameter 8.9-13.5 X 60.5
29	4286724M2	2	Roll	Diameter 25 X 59.5
30	4295244M1	1	Support	
31	391074X1	2	Cap Screw	M6 X 12
32	4295254M1	1	Bracket	
33	3780947M1	1	Stop	
34	390971X1	5	Flat Washer	
35	339030X1	3	Nut	M6
36	3010222X1	2	Carriage Bolt	M8 X 20
37	4295252M2	1	Support	
38	1441500X1	1	Top Locknut	M6
39	4276502M1	1	Clip	
40	4295251M1	1	Bracket	
41	339560X1	1	Cap Screw	M6 X 16
42	4275844P94	1	Panel	Left Hand
43	391038X1	1	Flat Washer	
44	339761X1	2	Cap Screw	M8 X 25
45	4273770M2	1	Support	
46	4291061M2	1	Cowl	
47	4284225M2	1	Roll	Diameter 25 X 45.5
48	4289824M1	1	Spacer	Diameter 8.9-13.5 X 46.5

Massey Ferguson

8450 / 8460 TRACTORS (TIER 3) - |---> P341051 / |---> P325039 (except P332013) -  
3906070

3906070

Engine & Equipment - From T021082 - Guards - Left Side

Page010-0010

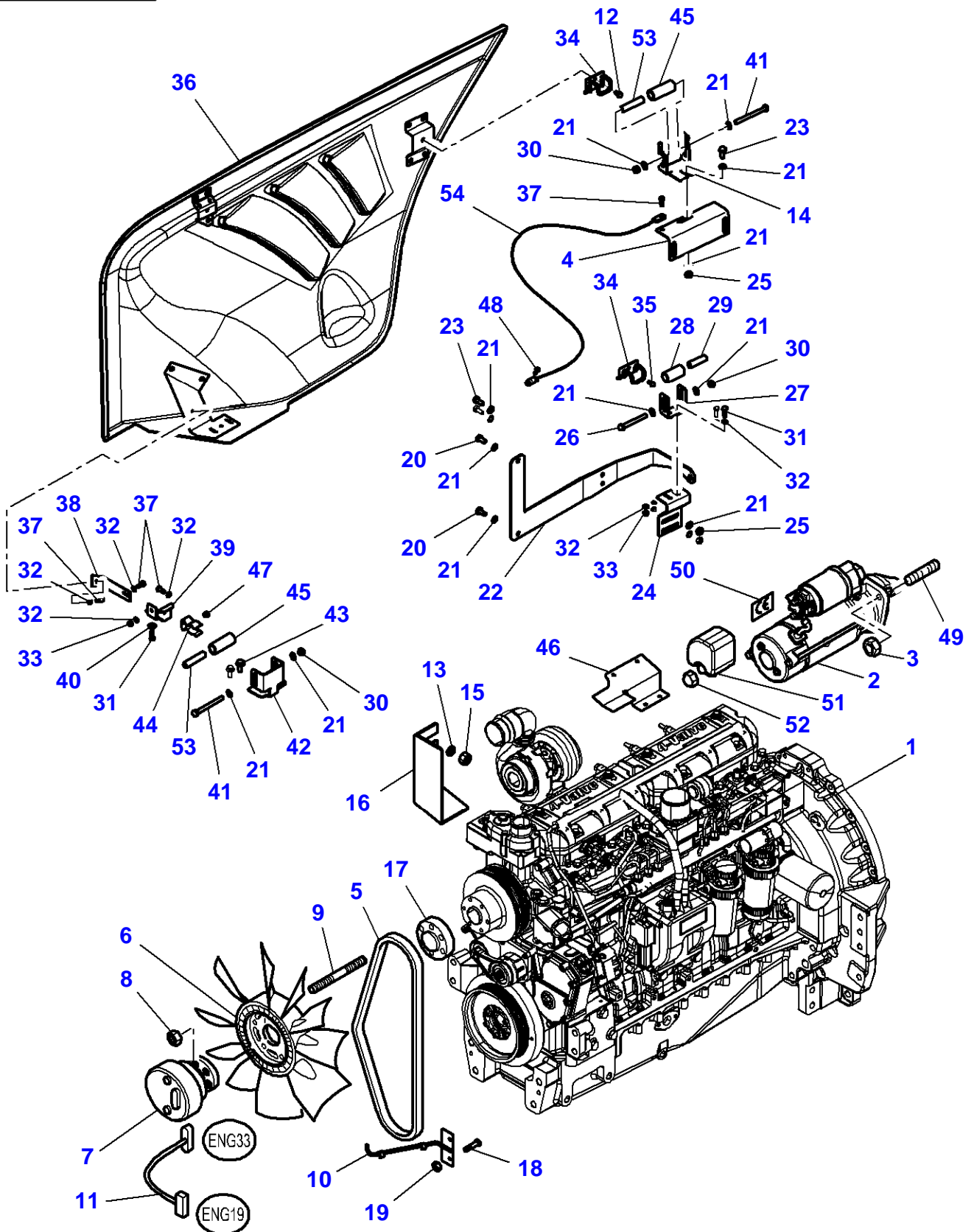
Item	Part Number	Qty	Description	Comments
49	391005X1	3	Stud	M10 X 25
50	3788193M1	1	Label	
51	3786093M1	1	Protection.	
52	3786092M1	1	Nut	
53	4295242M1	1	Bracket	
54	4295245M1	1	Support	

FOOTNOTE [A] INCLUDES FLYWHEEL

FOOTNOTE [B] THE APPROPRIATE SAFETY DECALS MUST BE ORDERED AND FITTED TO THIS PART

FOOTNOTE [C] NOT ILLUSTRATED

1-WA06-054-A





## Engine &amp; Equipment - From T021082 - Guards - Right Side

Item	Part Number	Qty	Description	Comments
1	V835076118	1	Engine	[A] MF 8450 74 CTA Replace and repair. Old not interchangeable with new V835061744
	V865061744X	1	Short Engine	[C] Up to Serial or Engine Number T022080 MF 8450
	V865076118X	1	Short Engine	[C] From Serial or Engine Number T022081 MF 8450
	V835076119	1	Engine	[A] MF 8460 74 CTA Replace and repair. Old not interchangeable with new V835061745
	V865061745X	1	Short Engine	[C] Up to Serial or Engine Number T036046 MF 8460
	V865076119X	1	Short Engine	[C] From Serial or Engine Number T036047 MF 8460
2	4288991M2	1	Startermotor	[B]
3	339402X1	3	Nut	M10
4	4279547M2	1	Support	From Serial or Engine Number T046065
	4296834M1	1	Support	From Serial or Engine Number T046066
5	<b>4284981M1</b>	1	Belt	Up to Serial or Engine Number T128080 Length 1824 MM
	<b>4296120M1</b>	1	Belt	From Serial or Engine Number T128081 Length 1815 MM
6	4274231M1	1	Fan	Diameter 650 MM
7	4276064M1	1	Clutch	
8	1441932X1	6	Nut Metric	M10
9	3011353X1	6	Stud	M10 X 52
10	4276881M4	1	Support	
11	4272811M4	1	Harness	
12	391074X1	1	Cap Screw	M6 X 12
13	390734X1	2	Flat Washer	
14	4295248M1	1	Support	
15	1441932X1	2	Nut Metric	M10
16	4276812M4	1	Cowl	
17	4270818M1	1	Spacer	Thickness 30 MM
18	339560X1	2	Cap Screw	M6 X 16
19	339030X1	2	Nut	M6
20	339124X1	2	Cap Screw	M8 X 16
21	390972X1	14	Flat Washer	
22	4281865M2	1	Support	
23	339123X1	3	Cap Screw	M8 X 20
24	4295246M1	1	Support	
25	339169X1	3	Nut	M8
26	390246X1	1	Cap Screw	M8 X 70
27	4295247M1	1	Support	
28	4284225M2	1	Roll	Diameter 25 X 45.5
29	4289824M1	1	Spacer	Diameter 8.9-13.5 X 46.5
30	394367X1	2	Locknut	M8
31	339666X1	3	Cap Screw	M6 X 20
32	390971X1	8	Flat Washer	
33	339030X1	3	Nut	M6
34	4295241M1	2	Bracket	
35	391074X1	1	Cap Screw	M6 X 12
36	4276108P95	1	Panel	Right Hand
37	339560X1	4	Cap Screw	M6 X 16
38	4295253M1	1	Reinforcement	
39	4295249M1	1	Bracket	
40	391038X1	1	Flat Washer	
41	391286X1	2	Cap Screw	M8 X 85
42	4295250M1	1	Support	
43	3010222X1	2	Carriage Bolt	M8 X 20
44	4276502M1	1	Clip	
45	4286724M2	2	Roll	Diameter 25 X 59.5
46	4291061M2	1	Cowl	
47	1441500X1	1	Top Locknut	M6

Massey Ferguson

8450 / 8460 TRACTORS (TIER 3) - |---> P341051 / |---> P325039 (except P332013) -  
3906070

3906070

Engine & Equipment - From T021082 - Guards - Right Side

Page010-0015

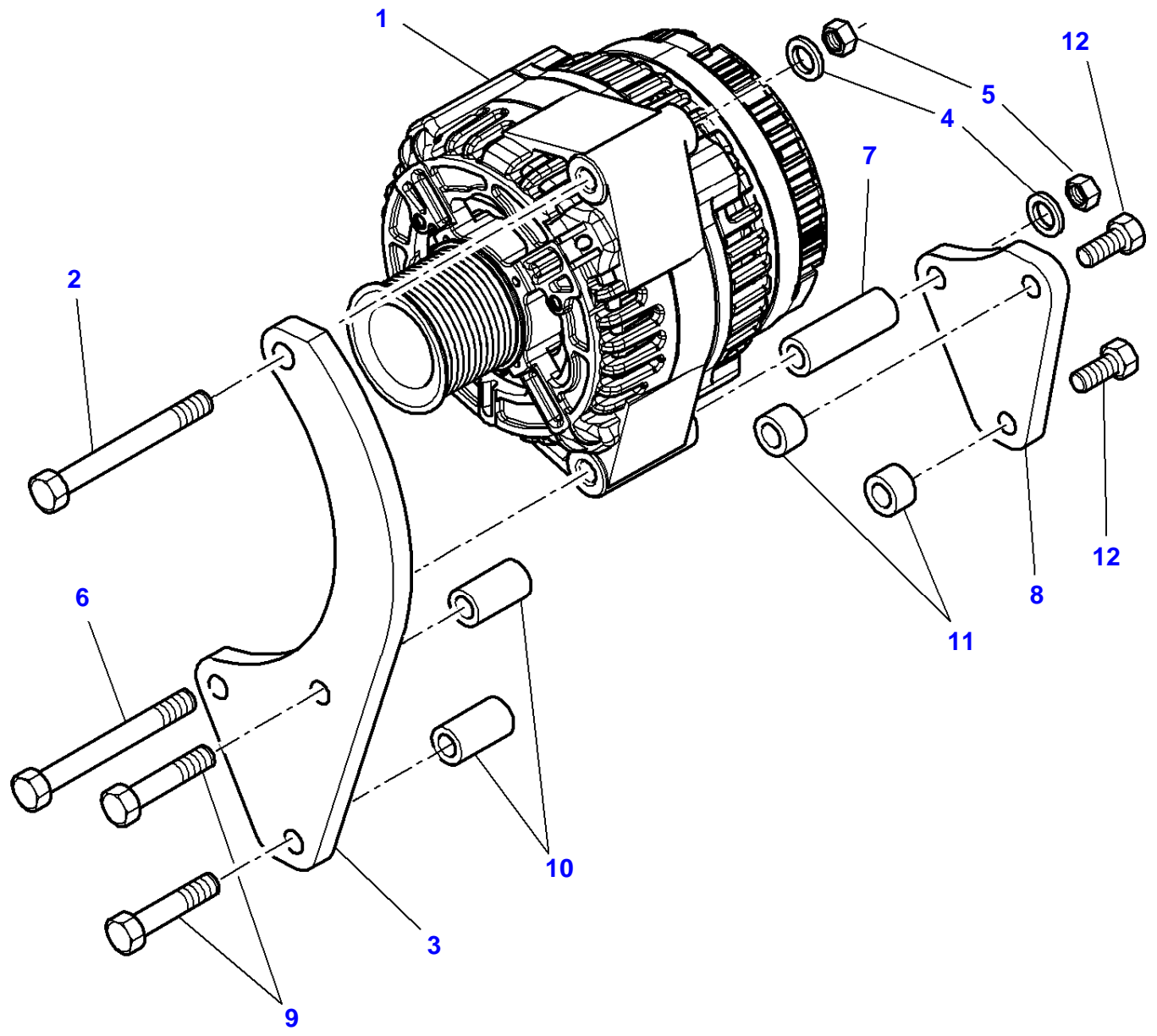
Item	Part Number	Qty	Description	Comments
48	376820X1	1	Rivet	
49	391005X1	3	Stud	M10 X 25
50	3788193M1	1	Label	
51	3786093M1	1	Protection.	
52	3786092M1	1	Nut	
53	4289823M1	2	Spacer	Diameter 8.9-13.5 X 60.5
54	3783347M2	1	Cable	

FOOTNOTE [A] INCLUDES FLYWHEEL

FOOTNOTE [B] THE APPROPRIATE SAFETY DECALS MUST BE ORDERED AND FITTED TO THIS PART

FOOTNOTE [C] NOT ILLUSTRATED

1-WA10-014-A



**Massey Ferguson****8450 / 8460 TRACTORS (TIER 3) - |---> P341051 / |---> P325039 (except P332013) -  
3906070**

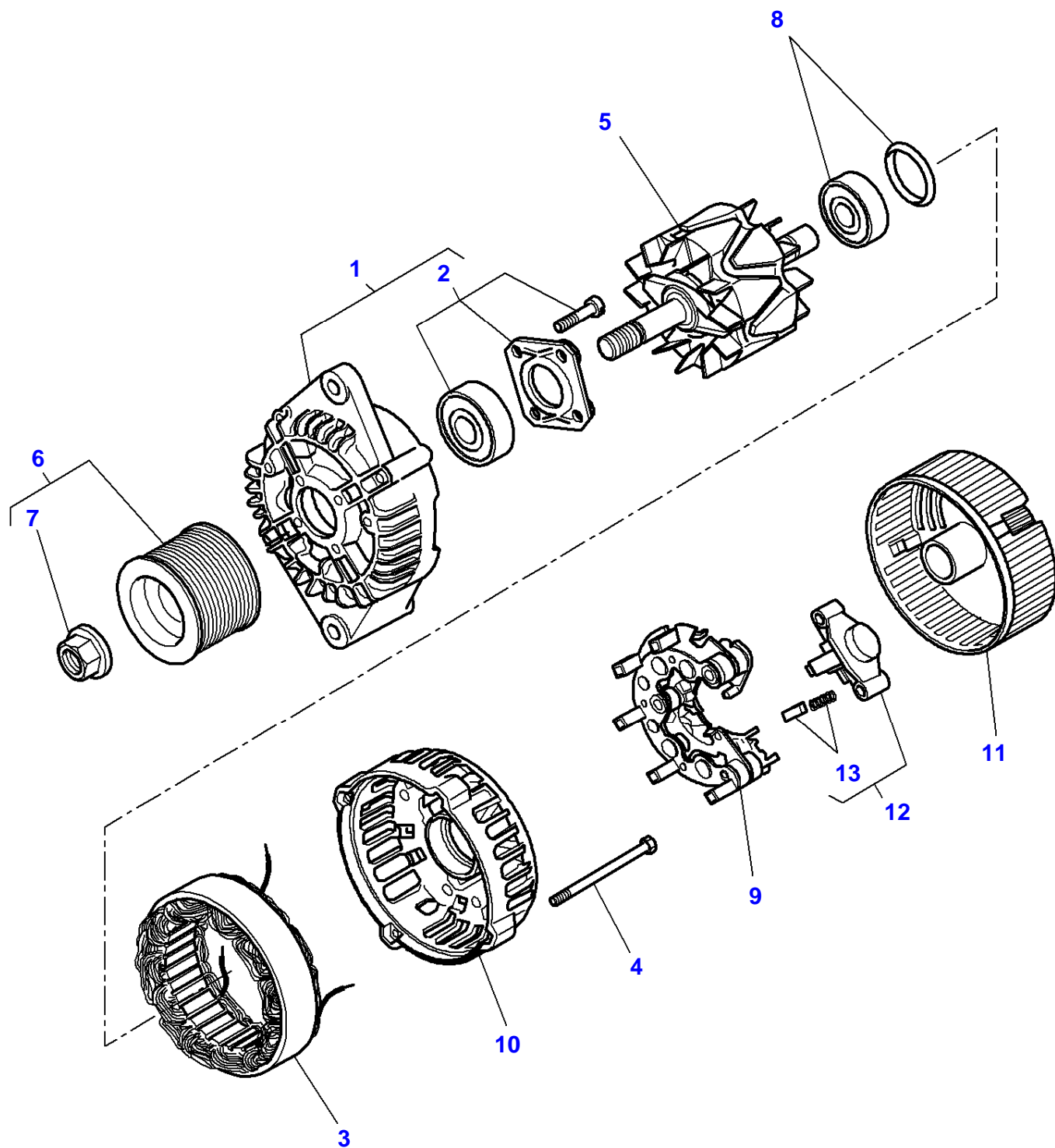
3906070

**Alternator & Bracket**

Page010-0020

Item	Part Number	Qty	Description	Comments
1	3789453M92	1	Alternator	150 AMP See Page - Reference Number 010-0025/0
2	339488X1	1	Cap Screw	M10 X 85
3	4282982M1	1	Support	
4	390734X1	2	Flat Washer	
5	1441932X1	2	Nut Metric	M10
6	3002813X1	1	Cap Screw	M10 X 145
7	4282985M1	1	Spacer	
8	4282983M1	1	Support	
9	339132X1	2	Cap Screw	M8 X 75
10	4282984M1	2	Spacer	
11	3011180X1	2	Spacer	
12	339009X1	2	Cap Screw	M8 X 35

1-WC35-005-C



## Alternator - 150 Amp

Page010-0025

Item	Part Number	Qty	Description	Comments
	3789453M92	1	Alternator	
1		1	Kit, Drive	Not serviced,order REF. 0
2	3907186M91	1	Kit, Bearing	(1)
3		1	Stator	Not serviced,order REF. 0
4	3907187M1	1	Bolt	
5		1	Rotor	Not serviced,order REF. 0
6	3907189M91	1	Pulley	
7		1	Parts Pack	(6) Not serviced,order REF. 6
8	3907193M91	1	Kit, Bearing	
9	3907190M91	1	Rectifier	
10		1	Housing	Not serviced,order REF. 0
11	3907191M1	1	Cover	
12	3907192M91	1	Regulator	
13		1	Brush	(12) Not serviced,order REF. 12

**Buy Now**



Our support email:

[ebooklibonline@outlook.com](mailto:ebooklibonline@outlook.com)