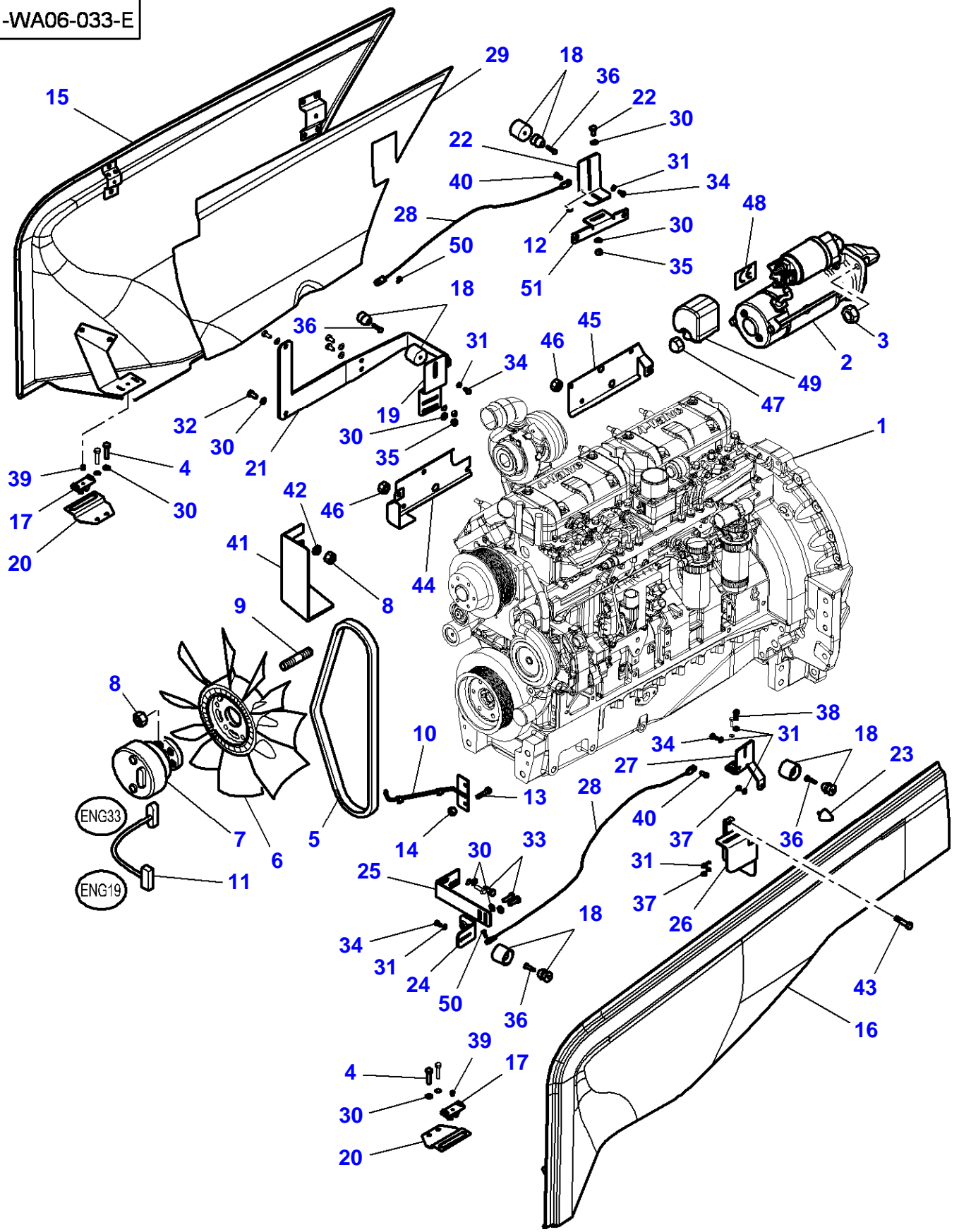


Page Title	Page Number
Engine & Equipment - Up to Serial or Engine Number - T021081	010-0005
Engine & Equipment - From T021082 - Guards - Left Side	010-0010
Engine & Equipment - From T021082 - Guards - Right Side	010-0015
Alternator & Bracket	010-0020
Alternator - 150 Amp	010-0025
Starter - Up To S/N S051055 Except Tractor S/N S039058 For M F8470 - Up To S/N S045021 For MF8480	010-0030
Starter - From S/N S051056 Except Tractor S/N S039058 For MF8470 - From S/N S045022 For MF8480	010-0035
Cylinder Block - UP TO U1000	010-0040
Cylinder Block - From U1001	010-0045
Timing Gear Housing	010-0050
Crankshaft, Piston & Connecting Rods	010-0055
Valve Mechanism And Camshaft	010-0060
Cylinder Head	010-0065
Cylinder Head Cover - UP TO U1000	010-0070
Cylinder Head Cover - From U1001	010-0075
Oil Sump	010-0080
Lubricating Oil Cooler And Filter	010-0085
Water Pump	010-0090
Injection System	010-0095
Low Pressure Fuel System	010-0100
Air Induction & Exhaust	010-0105
Turbocharger - Pipes - Up to Serial or Engine Number - S19673	010-0110
Turbocharger - Pipes - From Serial or Engine Number - S19674	010-0115
Belt Tensioner	010-0120
Electronic Engine Management - UP TO U1000	010-0125
Electronic Engine Management - From U1001	010-0130
Engine Repair Kits - Piston- Cylinder Head With Valves	010-0135
Engine Gaskets Sets	010-0140
Heater Engine Block - 110 V	010-0145
Heater Engine Block - 220 V	010-0150
Centrifugal Oil Filter	010-0155
Cab Heating System - Engine Part	010-0160
Fuel Tank & Attachments	010-0165
Additional Tank	010-0170
Fuel Pipes	010-0175
Fuel System	010-0180
Batteries And Cables - Without Battery Cut-Off W/O Positive Connection	010-0185
Batteries And Cables - Without Battery Cut-Off With Positive Connection	010-0190
Batteries And Cables - With Battery Cut-Off	010-0195
Cooling System - Air Conditioned Installation	010-0200
Compressor	010-0205
Cooling System - Engine	010-0210
Cooling System - Engine	010-0215
Air Cooler	010-0220
Air Filter - Dry - Dual Element - UP TO MF8470 R352036 / MF8480 R341079	010-0225
Air Filter - Dry - Dual Element - FROM MF8470 R352037 / MF8480 R341080	010-0230
Air Filter - Dry - Dual Element	010-0235
Vertical Exhaust On The Side - UP TO MF8470 R352036 / MF8480 R341079	010-0240
Vertical Exhaust On The Side - FROM MF8470 R352037 / MF8480 R341080	010-0245
Throttle Controls	010-0250
Throttle Controls	010-0255

1-WA06-033-E



Item	Part Number	Qty	Description	Comments
1	V835261283	1	Engine	[A] Up to Serial or Engine Number R352036 MF 8470 84 CTA
	V865261283X	1	Short Engine	[B] Up to Serial or Engine Number R352036 MF 8470
	V835276120	1	Engine	[A] From Serial or Engine Number R352037 MF 8470 84 CTA
	V865261746X	1	Short Engine	Replace and repair. Old not interchangeable with new V835261746 [B] From Serial or Engine Number R352037 MF 8470
	V835261284	1	Engine	[A] Up to Serial or Engine Number R341079 MF 8480 84 CTA
	V865261284X	1	Short Engine	[B] Up to Serial or Engine Number R341079 MF 8480
	V865261284	1	Exchange Engine	[E] Up to Serial or Engine Number R341079 MF 8480
	V835276121	1	Engine	[A] From Serial or Engine Number R341080 MF 8480 84 CTA
	V865261747X	1	Short Engine	Replace and repair. Old not interchangeable with new V835261747 [B] From Serial or Engine Number R341080 MF 8480
2	3823621M91	1	Startermotor	[C] See Page - Reference Number 010-0030/1 Up to Serial or Engine Number S045021 - MF8480
	3823621M91	1	Startermotor	[C,D] See Page - Reference Number 010-0030/1 Up to Serial or Engine Number S051055 - MF8470
	4288991M2	1	Startermotor	[C] From Serial or Engine Number S045022 - MF8480
	4288991M2	1	Startermotor	See Page - Reference Number 010-0035/1 [C,D] From Serial or Engine Number S051056 - MF8470
3	1441932X1	3	Nut Metric	M10
4	339009X1	4	Cap Screw	M8 X 35
5	<b>4285103M1</b>	1	Belt	Length 1930 MM Up to Serial or Engine Number R186002
	<b>4288688M1</b>	1	Belt	Length 1915 MM From Serial or Engine Number R186003
6	4274233M1	1	Fan	Diameter 715 MM
7	3789258M1	1	Clutch	
8	1441932X1	8	Nut Metric	M10
9	3011339X1	6	Stud	M10 X 22
10	4276881M4	1	Support	
11	4272811M4	1	Harness	
12	1441500X1	3	Top Locknut	M6
13	339560X1	2	Cap Screw	M6 X 16
14	339030X1	2	Nut	M6
15	4276108P92	1	Panel	Right Hand
16	4275844P92	1	Panel	Left Hand
17	3800376M1	2	Buffer	
18	72502409	4	Rubber	
19	4270244M5	1	Support	
20	4288360M1	2	Support	
21	4281865M2	1	Support	
22	4270260M2	1	Support	
23	3780947M1	1	Stop	
24	4270673M2	1	Support	
25	4273770M2	1	Support	
26	4284308M3	1	Support	

Item	Part Number	Qty	Description	Comments
27	4281581M1	1	Support	
28	3783347M2	2	Cable	
29	4275845M1	1	Protection.	
30	390972X1	21	Flat Washer	Diameter 8-17 X 1,7
31	390971X1	9	Flat Washer	Diameter 6-12 X 1,5
32	339124X1	5	Cap Screw	M8 X 16
33	339761X1	4	Cap Screw	M8 X 25
34	391074X1	4	Cap Screw	M6 X 12
35	339169X1	5	Nut	M8
36	339804X1	4	Cap Screw	M6 X 25
37	339030X1	3	Nut	M6
38	339666X1	2	Cap Screw	M6 X 20
39	3010021X1	2	Rivet	
40	339560X1	3	Cap Screw	M6 X 16
41	4276812M4	1	Cowl	Up to Serial or Engine Number R327070
42	390734X1	2	Flat Washer	Up to Serial or Engine Number R327070
43	3015258X1	1	Cap Screw	M8 X 95
43	339159X1	1	Cap Screw	M8 X 65
44	4288713M2	1	Cowl	From Serial or Engine Number R341080
45	4288714M2	1	Cowl	From Serial or Engine Number R341080
46	339402X1	8	Nut	From Serial or Engine Number R341080 M10
47	3786092M1	1	Nut	
48	3788193M1	1	Label	
49	3786093M1	1	Protection.	
50	376820X1	1	Rivet	
51	4279547M2	1	Support	

FOOTNOTE [A] INCLUDES FLYWHEEL

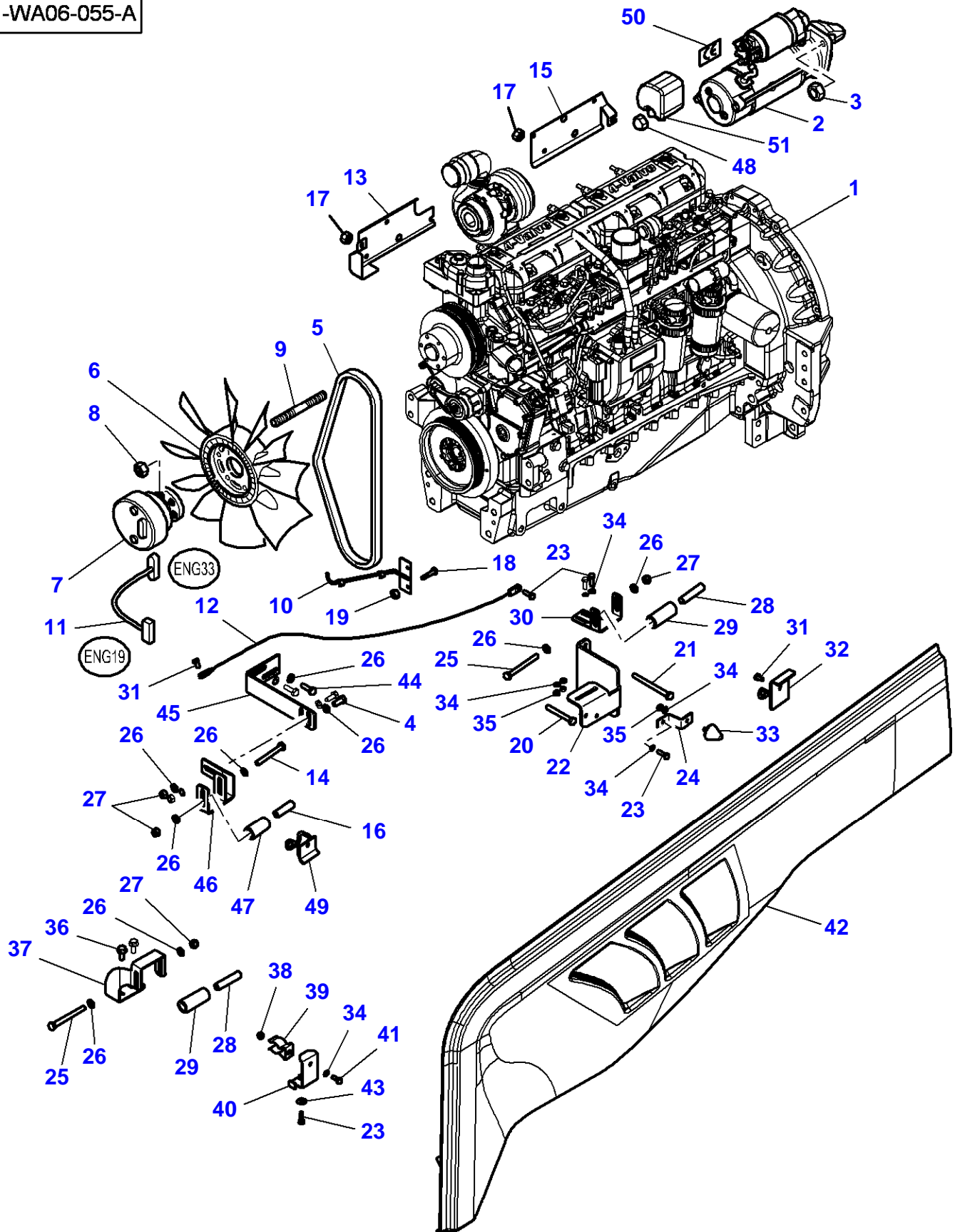
FOOTNOTE [B] NOT ILLUSTRATED

FOOTNOTE [C] THE APPROPRIATE SAFETY DECALS MUST BE ORDERED AND FITTED TO THIS PART

FOOTNOTE [D] EXCEPT TRACTOR NO S039058

FOOTNOTE [E] ENGINE REMOVE

1-WA06-055-A



Item	Part Number	Qty	Description	Comments
1	V835276120	1	Engine	[A] MF 8470 84 CTA Replace and repair. Old not interchangeable with new V838261746
	V865261746X	1	Short Engine	[C] MF 8470 Up to Serial or Engine Number T023072
	V865276120X	1	Short Engine	[C] MF 8470 From Serial or Engine Number T023073
	V835276121	1	Engine	[A] MF 8480 84 CTA Replace and repair. Old not interchangeable with new V835261747
	V865261747X	1	Short Engine	[C] MF 8480 Up to Serial or Engine Number T036053
	V865276121X	1	Short Engine	[C] MF 8480 From Serial or Engine Number T036054
2	4288991M2	1	Startermotor	[B]
3	339402X1	3	Nut	M10
4	339123X1	2	Cap Screw	M8 X 20
5	<b>4288688M1</b>	1	Belt	Length 1915 MM
6	4274233M1	1	Fan	Diameter 715 MM
7	3789258M1	1	Clutch	
8	1441932X1	6	Nut Metric	M10
9	3011339X1	6	Stud	M10 X 22
10	4276881M4	1	Support	
11	4272811M4	1	Harness	
12	3783347M2	1	Cable	
13	4288713M2	1	Cowl	
14	390246X1	1	Cap Screw	M8 X 70
15	4288714M2	1	Cowl	
16	4289824M1	1	Spacer	Diameter 8.9-13.5 X 46.5
17	339402X1	8	Nut	M10
18	339560X1	2	Cap Screw	M6 X 16
19	339030X1	2	Nut	M6
20	339159X1	1	Cap Screw	M8 X 65
21	339159X1	1	Cap Screw	M8 X 65
22	4284308M3	1	Support	
23	339666X1	5	Cap Screw	M6 X 20
24	4293019M1	1	Support	
25	391286X1	4	Cap Screw	M8 X 85
26	390972X1	16	Flat Washer	
27	394367X1	5	Locknut	M8
28	4289823M1	2	Spacer	Diameter 8.9-13.5 X 60.5
29	4286724M2	2	Roll	Diameter 25 X 59.5
30	4295244M1	1	Support	
31	391074X1	2	Cap Screw	M6 X 12
32	4295254M1	1	Bracket	
33	3780947M1	1	Stop	
34	390971X1	5	Flat Washer	
35	339030X1	3	Nut	M6
36	3010222X1	2	Carriage Bolt	M8 X 20
37	4295252M2	1	Support	
38	1441500X1	1	Top Locknut	M6
39	4276502M1	1	Clip	
40	4295251M1	1	Bracket	
41	339560X1	1	Cap Screw	M6 X 16
42	4275844P94	1	Panel	Right Hand
43	391038X1	1	Flat Washer	
44	339761X1	2	Cap Screw	M8 X 25
45	4273770M2	1	Support	
46	4295245M1	1	Support	
47	4284225M2	1	Roll	Diameter 25 X 45.5
48	3786092M1	1	Nut	
49	4295242M1	1	Bracket	
50	3788193M1	1	Label	
51	3786093M1	1	Protection.	

Massey Ferguson

8470 / 8480 TRACTORS (TIER 3) - |---> P340017 / |---> P340054 - 3906071

3906071

Engine & Equipment - From T021082 - Guards - Left Side

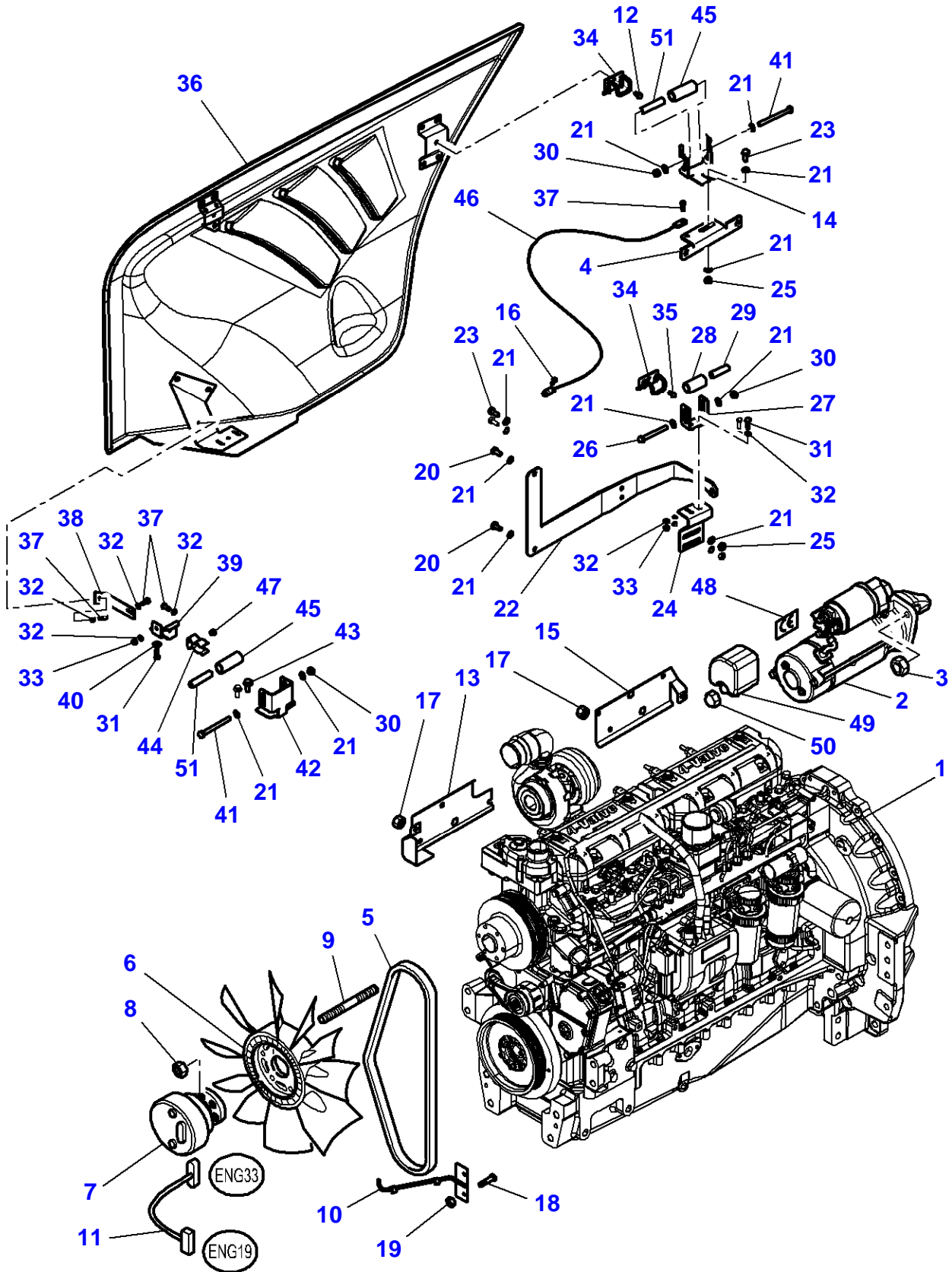
Page010-0010

Item Part Number Qty Description Comments

FOOTNOTE [B] THE APPROPRIATE SAFETY DECALS MUST BE ORDERED AND FITTED TO THIS PART

FOOTNOTE [C] NOT ILLUSTRATED

1-WA06-056-A





Item	Part Number	Qty	Description	Comments
1	V835276120	1	Engine	[A] MF 8470 84 CTA Replace and repair. Old not interchangeable with new V838261746
	V865261746X	1	Short Engine	[C] MF 8470 Up to Serial or Engine Number T023072
	V865276120X	1	Short Engine	[C] MF 8470 From Serial or Engine Number T023073
	V835276121	1	Engine	[A] MF 8480 84 CTA Replace and repair. Old not interchangeable with new V835261747
	V865261747X	1	Short Engine	[C] MF 8480 Up to Serial or Engine Number T036053
	V865276121X	1	Short Engine	[C] MF 8480 From Serial or Engine Number T036054
2	4288991M2	1	Startermotor	[B]
3	339402X1	3	Nut	M10
4	4279547M2	1	Support	
5	<b>4288688M1</b>	1	Belt	Length 1915 MM
6	4274233M1	1	Fan	Diameter 715 MM
7	3789258M1	1	Clutch	
8	1441932X1	6	Nut Metric	M10
9	3011339X1	6	Stud	M10 X 22
10	4276881M4	1	Support	
11	4272811M4	1	Harness	
12	391074X1	1	Cap Screw	M6 X 12
13	4288713M2	1	Cowl	
14	4295248M1	1	Support	
15	4288714M2	1	Cowl	
16	376820X1	1	Rivet	
17	339402X1	8	Nut	M10
18	339560X1	2	Cap Screw	M6 X 16
19	339030X1	2	Nut	M6
20	339124X1	2	Cap Screw	M8 X 16
21	390972X1	14	Flat Washer	
22	4281865M2	1	Support	
23	339123X1	3	Cap Screw	M8 X 20
24	4295246M1	1	Support	
25	339169X1	3	Nut	M8
26	390246X1	1	Cap Screw	M8 X 70
27	4295247M1	1	Support	
28	4284225M2	1	Roll	Diameter 25 X 45.5
29	4289824M1	1	Spacer	Diameter 8.9-13.5 X 46.5
30	394367X1	2	Locknut	M8
31	339666X1	3	Cap Screw	M6 X 20
32	390971X1	8	Flat Washer	
33	339030X1	3	Nut	M6
34	4295241M1	2	Bracket	
35	391074X1	1	Cap Screw	M6 X 12
36	4276108P95	1	Panel	Right Hand
37	339560X1	4	Cap Screw	M6 X 16
38	4295253M1	1	Reinforcement	
39	4295249M1	1	Bracket	
40	391038X1	1	Flat Washer	
41	391286X1	2	Cap Screw	M8 X 85
42	4295250M1	1	Support	
43	3010222X1	2	Carriage Bolt	M8 X 20
44	4276502M1	1	Clip	
45	4286724M2	2	Roll	Diameter 25 X 59.5
46	3783347M2	1	Cable	
47	1441500X1	1	Top Locknut	M6
48	3788193M1	1	Label	
49	3786093M1	1	Protection.	
50	3786092M1	1	Nut	
51	4289823M1	2	Spacer	Diameter 8.9-13.5 X 60.5

Massey Ferguson

8470 / 8480 TRACTORS (TIER 3) - |---> P340017 / |---> P340054 - 3906071

3906071

Engine & Equipment - From T021082 - Guards - Right Side

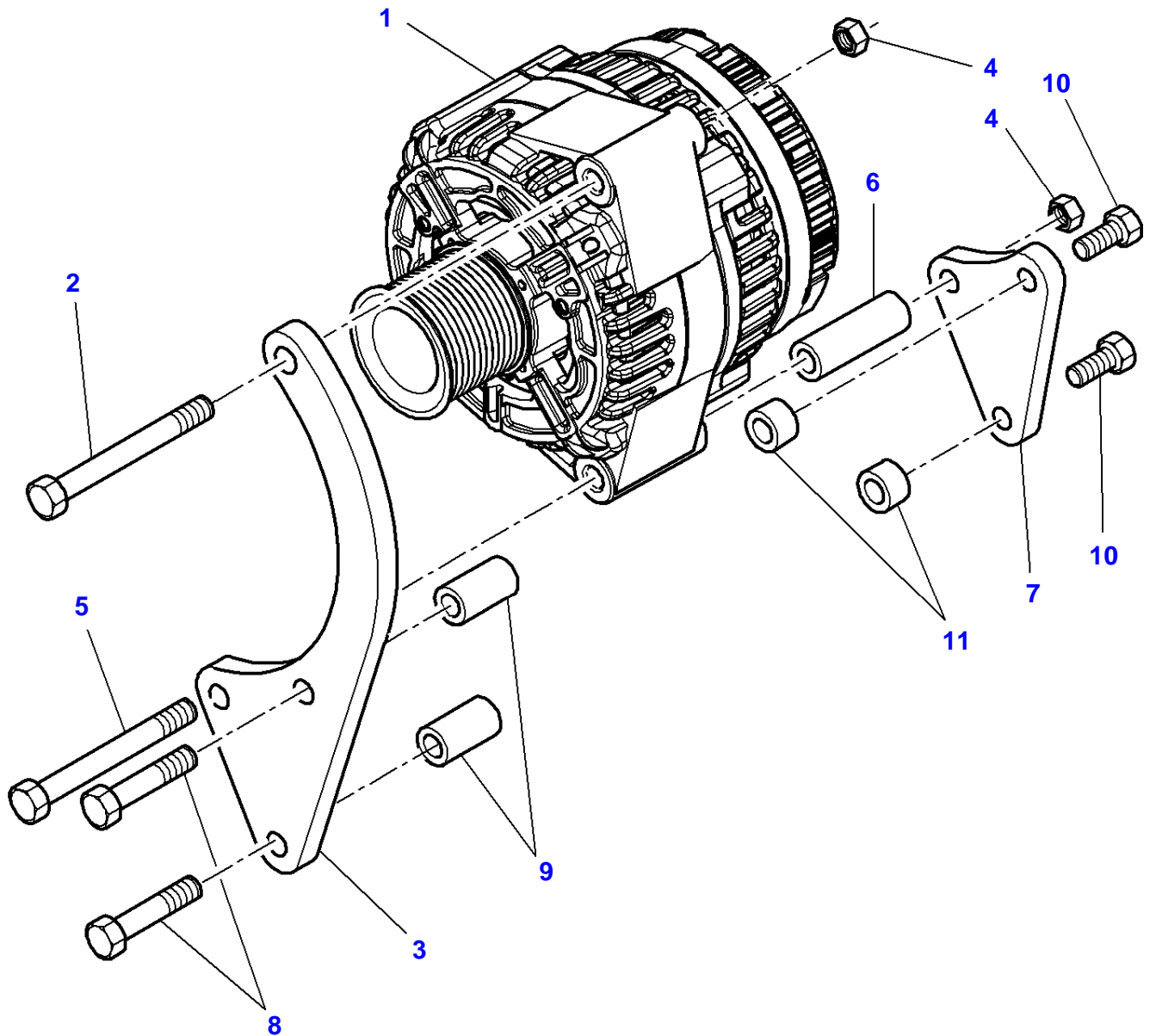
Page010-0015

Item Part Number Qty Description Comments

FOOTNOTE [B] THE APPROPRIATE SAFETY DECALS MUST BE ORDERED AND FITTED TO THIS PART

FOOTNOTE [C] NOT ILLUSTRATED

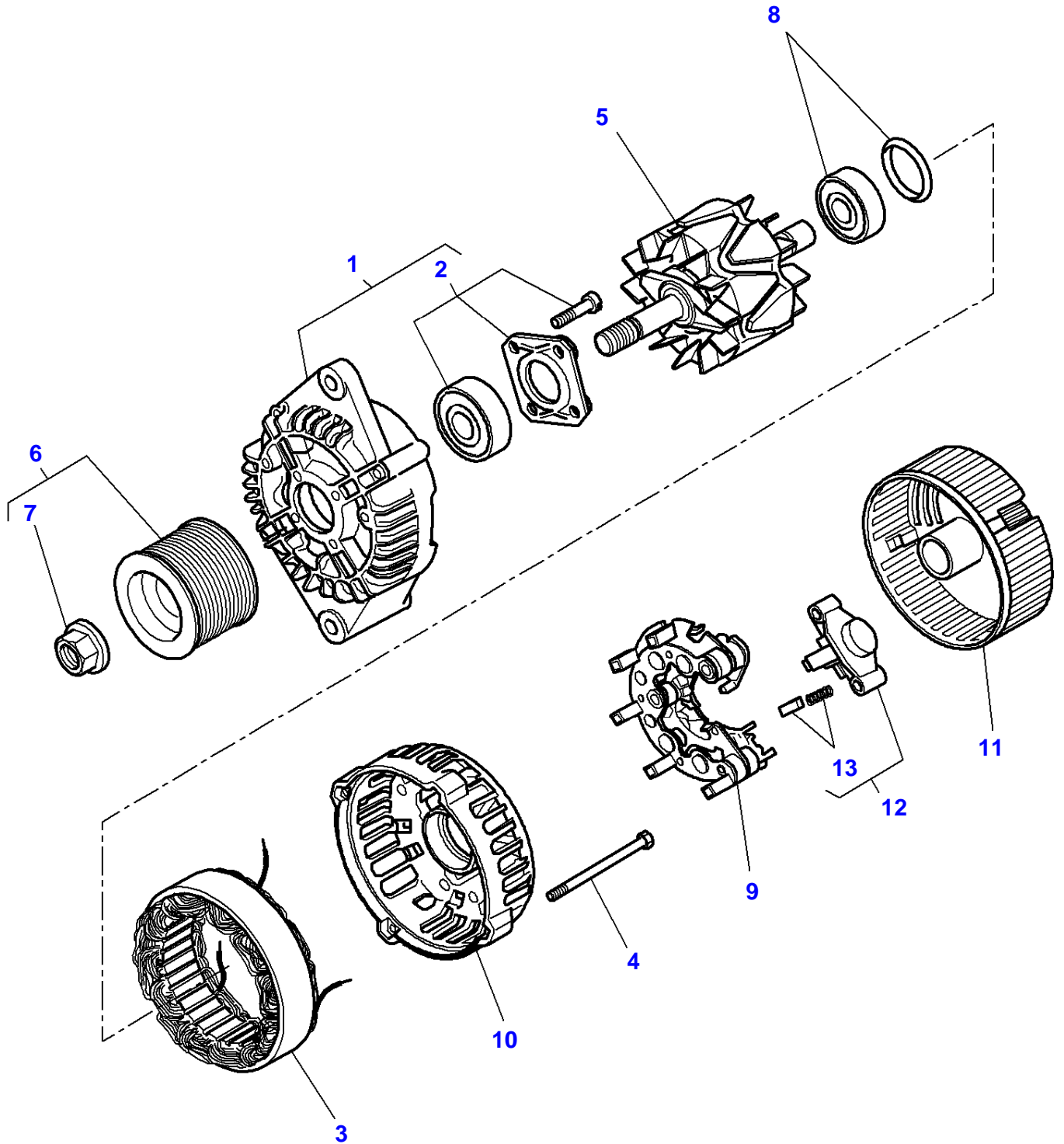
1-WA10-013-A



**Massey Ferguson****8470 / 8480 TRACTORS (TIER 3) - |---> P340017 / |---> P340054 - 3906071****3906071****Alternator & Bracket****Page010-0020**

<b>Item</b>	<b>Part Number</b>	<b>Qty</b>	<b>Description</b>	<b>Comments</b>
1	3789983M93	1	Alternator	150 AMP See Page - Reference Number 010-0025/0
2	3009502X1	1	Cap Screw	Up to Serial or Engine Number S330031 M10 X 80
	339488X1	1	Cap Screw	From Serial or Engine Number S330032 M10 X 85
3	3789862M1	1	Support	
4	1441932X1	2	Nut Metric	M10
5	3002813X1	1	Cap Screw	M10 X 145
6	4280581M1	1	Spacer	Diameter 10.5-20 X 56
7	3789861M1	1	Support	
8	339132X1	2	Cap Screw	M8 X 75
9	4280582M1	2	Spacer	Diameter 8.5-16 X 25
10	339009X1	2	Cap Screw	M8 X 35
11	3011180X1	2	Spacer	

1-WC35-005-C



**Massey Ferguson****8470 / 8480 TRACTORS (TIER 3) - |---> P340017 / |---> P340054 - 3906071****3906071****Alternator - 150 Amp****Page010-0025**

<b>Item</b>	<b>Part Number</b>	<b>Qty</b>	<b>Description</b>	<b>Comments</b>
	3789983M93	1	Alternator	
1		1	Kit, Drive	Not serviced,order REF. 0
2	3907186M91	1	Kit, Bearing	(1)
3		1	Stator	Not serviced,order REF. 0
4	3907187M1	1	Bolt	
5		1	Rotor	Not serviced,order REF. 0
6	3907188M91	1	Pulley	
7		1	Parts Pack	(6) Not serviced,order REF. 6
8	3907193M91	1	Kit, Bearing	
9	3907190M91	1	Rectifier	
10		1	Housing	Not serviced,order REF. 0
11	3907191M1	1	Cover	
12	3907192M91	1	Regulator	
13		1	Brush	(12) Not serviced,order REF. 12

**Buy Now**



Our support email:

[ebooklibonline@outlook.com](mailto:ebooklibonline@outlook.com)