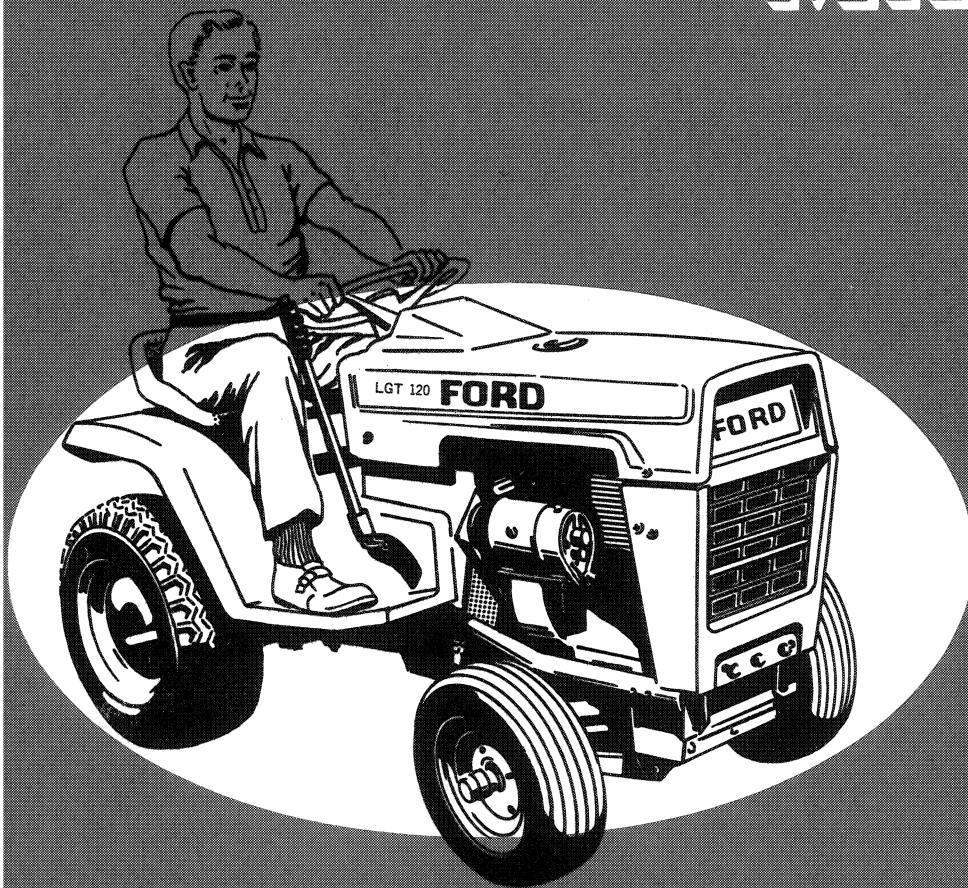


# FORD

## 100 AND 120 LAWN AND GARDEN TRACTORS

# OPERATOR'S MANUAL



FORD TRACTOR OPERATIONS

FORD MOTOR COMPANY

Reprinted

## FOREWORD

THIS MANUAL PROVIDES SUGGESTED OPERATING TECHNIQUES TO HELP YOU OBTAIN EFFICIENT AND DEPENDABLE USE FROM YOUR NEW FORD 100 OR 120 LAWN AND GARDEN TRACTOR. WHERE DIFFERENCES EXIST, SPECIFIC INFORMATION IS PRESENTED FOR EACH MODEL. THIS MANUAL ALSO CONTAINS GENERAL INFORMATION, SPECIFICATIONS, SAFETY SUGGESTIONS, MAINTENANCE, AND SET-UP INFORMATION.

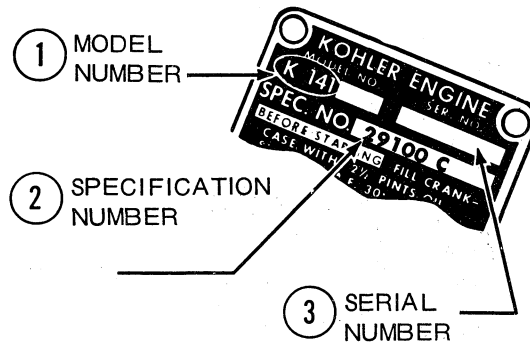
A WIDE VARIETY OF ACCESSORIES ARE AVAILABLE FOR USE WITH YOUR NEW TRACTOR. THESE ACCESSORIES WILL ADD PLEASURE TO YOUR OPERATING TIME. YOUR FORD TRACTOR-EQUIPMENT DEALER WILL HELP YOU DETERMINE WHICH ACCESSORIES WILL BE MOST USEFUL IN YOUR PARTICULAR SITUATION.

READ THIS MANUAL CAREFULLY BEFORE OPERATING YOUR TRACTOR. KEEP IT HANDY FOR FUTURE REFERENCE. IF, AT ANY TIME, YOU HAVE ANY QUESTIONS ABOUT YOUR TRACTOR, REMEMBER YOUR FORD TRACTOR-EQUIPMENT DEALER IS BEST QUALIFIED TO HELP YOU. HE HAS FACTORY-TRAINED SERVICE TECHNICIANS, GENUINE FORD PARTS, AND THE CORRECT TOOLS AND EQUIPMENT TO DO THE JOB RIGHT IN THE SHORTEST POSSIBLE TIME.

SERVICE DEPARTMENT  
FORD TRACTOR OPERATIONS  
FORD MOTOR COMPANY

### PARTS ORDERING INSTRUCTIONS

When ordering replacement parts from your Dealer, always state Model, Serial and Specification numbers as found on the nameplate of your engine. If a letter follows the specification number, make sure this is also stated. This information will enable the Dealer to quickly locate the correct part for your particular engine.



## WARRANTY

FORD MOTOR COMPANY warrants to the owner each part of this Ford Tractor and/or Ford Equipment to be free, under normal use and service, from defects in material and workmanship for a period of six months from the date of sale to the original retail purchaser. This warranty shall be fulfilled by the Dealer (or, if the owner of the tractor is traveling or has become a resident of a different locality, by any authorized Ford Tractor-Equipment Dealer) by replacing or repairing at his place of business, free of charge including related labor, any such defective part.

This warranty shall not apply to (1.) vendor-warranted items such as tires and tubes, (2.) to normal maintenance services (such as engine tune-up, fuel system cleaning and wheel, brake and clutch adjustment), or (3.) to normal replacement of service items (such as filters, brake or clutch linings), or (4.) to deterioration of belts and exterior finish due to normal use or exposure, or (5.) to parts of any tractor or equipment that has been subject to negligence, alteration or accident, or which has been used with parts or equipment not made or supplied by FORD MOTOR COMPANY if, in the reasonable judgment of the Company and/or its authorized Dealers, such use affects its performance or reliability, or (6.) to parts of any tractor or equipment that have been altered or repaired outside of the Dealer's place of business in a manner so as, in the reasonable judgment of the Company, to affect its performance or reliability.

EXCEPT FOR PERSONAL INJURIES PROVED TO HAVE BEEN CAUSED BY A DEFECT, THIS WARRANTY IS EXPRESSLY IN LIEU OF ANY OTHER EXPRESS OR IMPLIED WARRANTY, INCLUDING ANY IMPLIED WARRANTY OF MERCHANTABILITY OR FITNESS AND OF ANY OTHER OBLIGATION ON THE PART OF THE COMPANY AND/OR ITS AUTHORIZED DEALERS.

**BATTERY ADJUSTMENT POLICY** - Any original Ford equipment or Ford accessory battery found to be defective after expiration of the regular six month warranty coverage to the original purchaser, will be replaced by any authorized Ford Tractor-Equipment Dealer on a pro rata basis for a period from 7 to 24 months, but not exceeding 24 months from date of sale to original purchaser.

FORD MOTOR COMPANY reserves the right to make changes in its products at any time and without prior notice. When such changes are made, neither FORD MOTOR COMPANY or its Dealers assume any obligation to make these changes in products previously manufactured.

This warranty covers those Ford Tractors and units of Ford Equipment which are distributed by Tractor and Implement Operations (U.S.) and subsequently sold by authorized Ford Tractor-Equipment Dealers for use within the continental boundaries of the United States only.

# OPERATOR'S MANUAL

## TABLE OF CONTENTS

GENERAL INFORMATION		Page
Definition of Directions . . . . .		4
Power Plant . . . . .		4
Gasoline . . . . .		4
Drive Train . . . . .		4
Clutch-Brake Pedal . . . . .		4
Ignition Switch and Keys . . . . .		4
Removing the Hood . . . . .		4
Implement Lift Handle . . . . .		5
Parking Brake . . . . .		5
Choke Control . . . . .		5
Throttle Lever . . . . .		5
Ammeter . . . . .		5
Gear Shift Lever . . . . .		5
Tires . . . . .		5
Seat and Tool Compartment . . . . .		6
OPERATING INSTRUCTIONS		
Operating Safety Instructions . . . . .		7
Preparing Tractor For Operation . . . . .		7
Weight For Added Traction . . . . .		7
Starting and Stopping Engine . . . . .		8
To Start Engine . . . . .		8
To Stop Engine . . . . .		8
Operating The Tractor . . . . .		8
Stopping The Tractor . . . . .		8
Operating The PTO Clutch . . . . .		8
MAINTENANCE AND LUBRICATION		
Daily Inspection . . . . .		9
Weekly Inspection . . . . .		9
Lubricating The Tractor . . . . .		10
Lubricating Throttle and Choke Control Linkage . . . . .		11
Servicing The Battery . . . . .		12
Tire Maintenance . . . . .		12
Wide Base Front Tire Inflation Pressures . . . . .		12
Wide Base Rear Tire Inflation Pressures . . . . .		12
ADJUSTMENTS AND BELT REPLACEMENT		
Drive Belt Replacement . . . . .		13
Adjusting The Traction Drive Belt And Clutch-Brake Assembly . . . . .		14
SET-UP INSTRUCTIONS		
Installing The Steering Wheel . . . . .		15
Installing The Battery . . . . .		15
Safety Guidelines For Batterys . . . . .		16
TRACTOR STORAGE		
Starting The Engine After Storage . . . . .		17
OPEI - Safe Operation Practices . . . . .		20
Specifications . . . . .		21

## DEFINITION OF DIRECTIONS

Reference to "right" and "left" side of mower is from operator's position when seated in normal operating

position. Reference to "forward" and "rearward" is likewise from operator's position.

## GENERAL INFORMATION

### POWER PLANT

Your tractor is powered by a single cylinder, 4-cycle engine that uses "regular" gasoline. **DO NOT MIX OIL WITH GASOLINE FOR THIS ENGINE!** Engine speed is controlled by means of a throttle lever conveniently mounted on the dash.

### GASOLINE

The engine manufacturer recommends use of non-leaded gasoline of 90 octane rating or higher.

### DRIVE TRAIN

Engine power is transmitted to the rear wheels through a drive belt and "TRANSAXLE" located on the rear axle. This is a single, oil-tight assembly which combines the functions of an automotive-type transmission and differential. It provides four speeds forward and one speed in reverse.

The transmission is coupled to an automotive-type differential that allows the tractor to be maneuvered without unnecessary wear to the rear tires.

### CLUTCH-BRAKE PEDAL (See Fig. 1)

The clutch and brake are operated by one foot pedal, conveniently located above the left foot rest. When

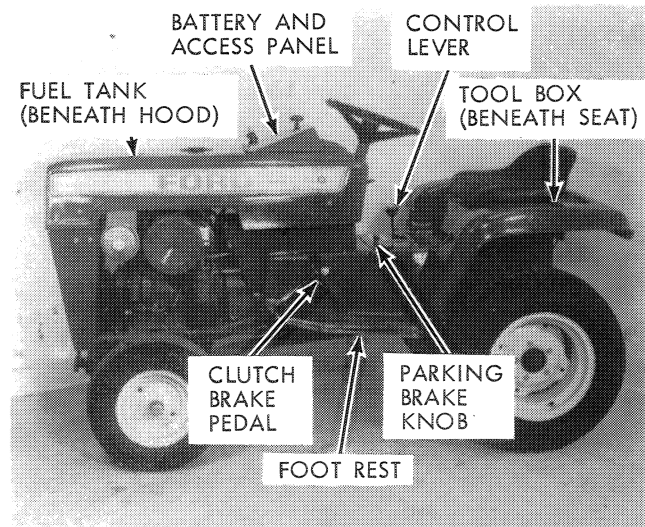


Figure 1.

the clutch-brake pedal is pushed down firmly, the clutch is disengaged and the brake is applied to stop tractor motion.

### NOTE

Before the engine can be started by turning the key in the switch clockwise, the clutch-brake pedal must be depressed firmly to engage the safety start switch, which allows current to flow to the starter.

### IGNITION SWITCH AND KEYS

Two ignition keys are supplied with each tractor. To turn ignition "ON", insert key in switch and turn clockwise (See Fig. 4). The switch is an automotive type combination ignition and starter. Ignition keys should be removed from the tractor when not in use, to prevent unauthorized operation.

### REMOVING THE HOOD

First remove the four fastening screws completely from the hood. Move to front of tractor and face the hood. Grasp it with each hand at about the middle of the curved portion. Lift up and work the hood up and clear of the steering wheel area and toward you. Be careful not to harm the ammeter.

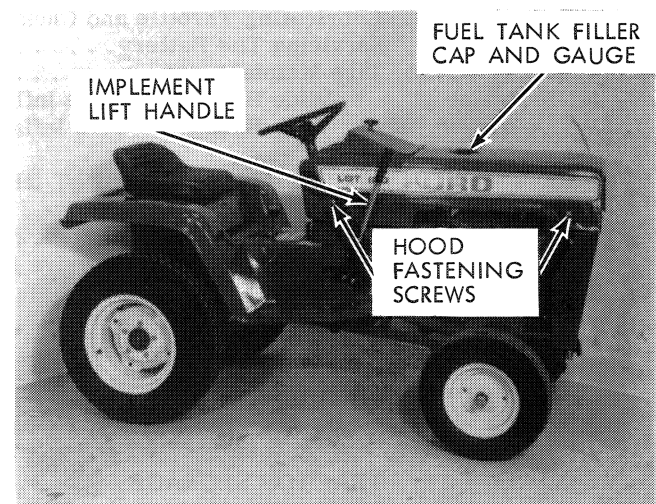


Figure 2.

### SINGLE POINT IMPLEMENT HITCH (See Fig. 5)

A fixed hitch is supplied as standard equipment for the towing of implements.

## IMPLEMENT LIFT HANDLE

The lift handle (See Fig. 2) is used to raise and lower the following implements used with the tractor:

1. Snow Thrower
2. Trip Dozer Blade
3. Rotary Mower
4. Sleeve Hitch
5. Snow Dozer Blade
6. Tiller

The lift handle can be locked in various positions. To place an implement in working position, push lift handle forward until handle pin catches in desired notch. To place implement in transport position, pull lift handle back until handle pin is engaged in the rear notch. When mounting implements, place the lift handle in the forward position (beyond the last notch).

## PARKING BRAKE

A parking brake (See Fig. 1) is provided to prevent movement of the tractor whether the engine is running or stopped. To set the brake, fully depress the clutch-brake pedal and pull up on parking brake knob to engage the brake lock (See Fig. 3). The brake is automatically released by depressing the clutch-brake pedal.

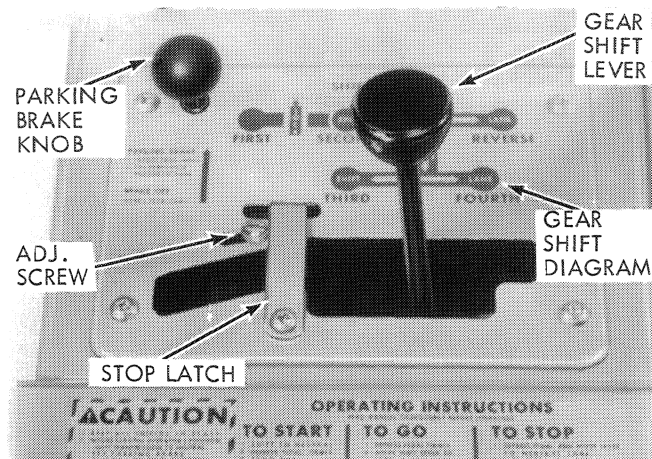


Figure 3.

## CHOKE CONTROL (See Fig. 4)

Located on lower left side of instrument panel. When starting a cold engine, pull the choke control completely out to open the choke. After the engine starts, push the choke control about half way in to keep the choke partially open. Push the choke control all the way in to close the choke for normal operation after the engine is properly warmed. A warm engine usually requires less choke to start.

## THROTTLE LEVER (See Fig. 4)

Located on upper left side of instrument panel. The area of lever travel between the "SLOW" and "FAST" positions controls the flow rate of air and fuel mixture to the engine and thus regulates engine speed. When the lever is moved upward toward the "FAST" position, the engine speed increases, and when it is pulled downward toward the "SLOW" position, the engine speed decreases.

## AMMETER

The ammeter is located immediately to the left of the steering wheel. It indicates the rate of battery charge or discharge. When possible, maintain sufficient engine speed so the ammeter indicates a charging rate to prevent unnecessary drain on the battery.

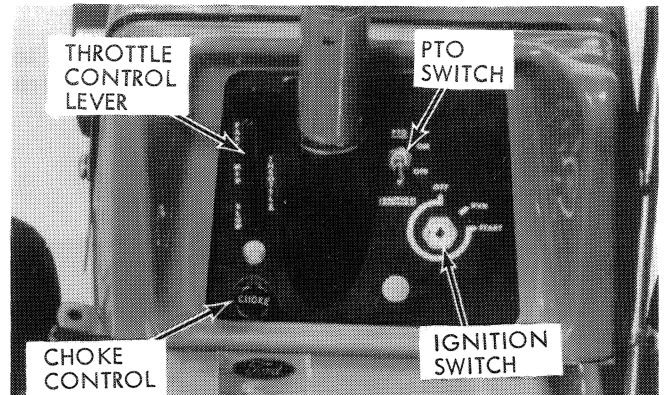


Figure 4.

## TRANSMISSION GEAR SHIFT LEVER (See Fig. 3)

The gear shift lever is positioned directly in front of the seat for easy shifting of the transmission from one gear to another. A decal showing the complete diagram of gear shift positions has been installed on your tractor. Detailed instructions of gear selection and method of shifting is given under "Operating Instructions".

## TIRES

Your tractor is shipped from the factory with all tires mounted.

## NOTE

Front and rear tires are over-inflated at the factory for shipping purposes. Before operation, check all tires for proper air pressure. See "Tire Maintenance" for tire pressures.

Tires mounted on your tractor are as follows:

- Front Tires - Wide Base (set of two)  
Size 16 x 6.50 - 8 Pneumatic
- Rear Tires - Wide Base (set of two)  
Size 23 x 8.50 - 12 Pneumatic



Wide base tires (See Fig. 5) have a larger area of the tread in effective contact with the ground at all times, thus providing added traction, and have considerably less tendency to mark turf or sink into such surfaces as loose soil, soft sand, etc. They also provide a soft and smooth ride on rough terrain.

Standard tires have a narrow tread, thus having less area in contact with the ground.

Front tires are as shown in Figure 6.

#### SEAT AND TOOL COMPARTMENT

The seat hinges forward as shown in Figure 7 to provide access to the tool compartment. Pull latch back toward rear of tractor to release seat.

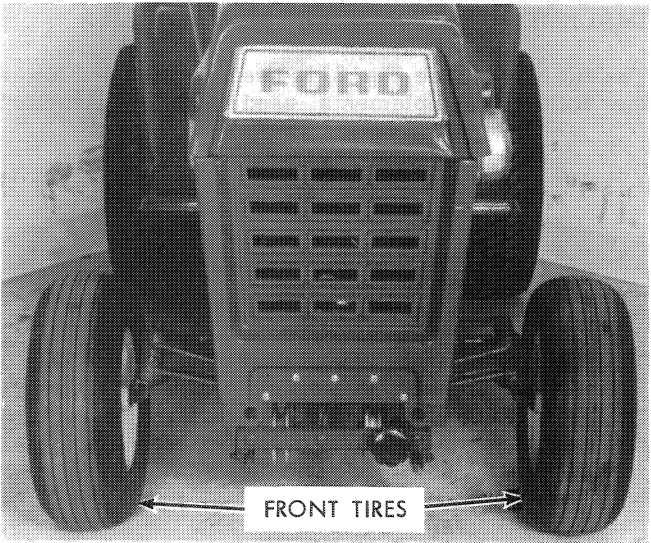


Figure 6.

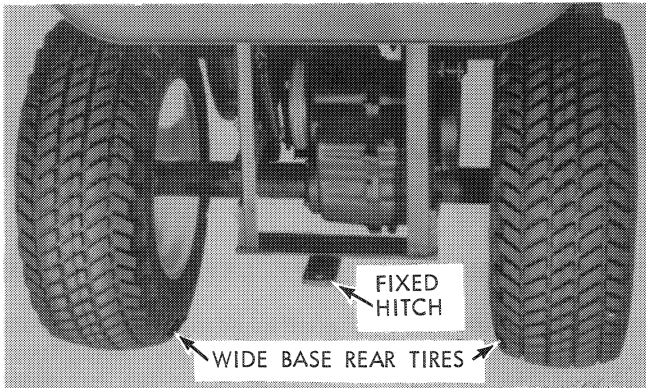


Figure 5.

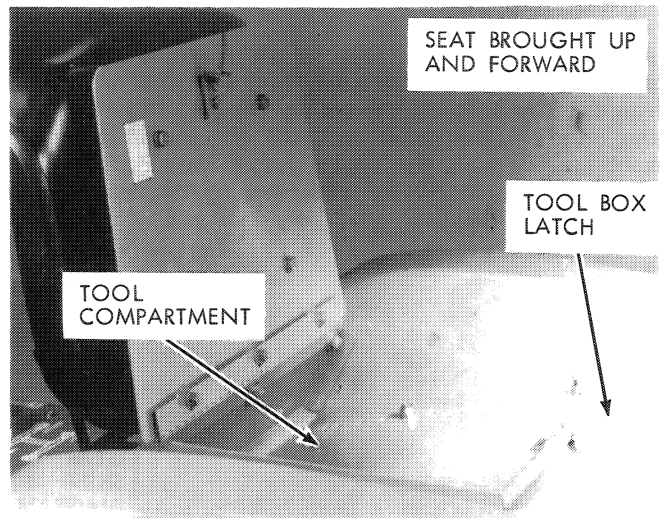


Figure 7.

Thank you so much for reading.  
Please click the “Buy Now!”  
button below to download the  
complete manual.



After you pay.

You can download the most  
perfect and complete manual in  
the world immediately.

Our support email:

[ebooklibonline@outlook.com](mailto:ebooklibonline@outlook.com)