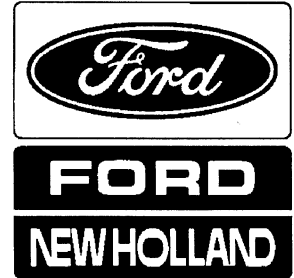


# FORD



## Operator's Manual

---

Lawn and Garden Tractors  
Series 125, 145

42012520

Reprinted

## FOREWORD

THIS MANUAL PROVIDES SUGGESTED OPERATING TECHNIQUES TO HELP YOU OBTAIN EFFICIENT AND DEPENDABLE USE FROM YOUR NEW FORD 125 OR 145 LAWN AND GARDEN TRACTOR. WHERE DIFFERENCES EXIST, SPECIFIC INFORMATION IS PRESENTED FOR EACH MODEL. THIS MANUAL ALSO CONTAINS GENERAL INFORMATION, SPECIFICATIONS, SAFETY SUGGESTIONS, MAINTENANCE, AND SET-UP INFORMATION.

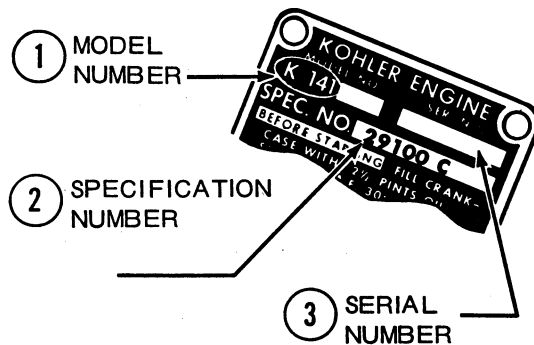
A WIDE VARIETY OF ACCESSORIES ARE AVAILABLE FOR USE WITH YOUR NEW TRACTOR. THESE ACCESSORIES WILL ADD PLEASURE TO YOUR OPERATING TIME. YOUR FORD TRACTOR-EQUIPMENT DEALER WILL HELP YOU DETERMINE WHICH ACCESSORIES WILL BE MOST USEFUL IN YOUR PARTICULAR SITUATION.

READ THIS MANUAL CAREFULLY BEFORE OPERATING YOUR TRACTOR. KEEP IT HANDY FOR FUTURE REFERENCE. IF, AT ANY TIME, YOU HAVE ANY QUESTIONS ABOUT YOUR TRACTOR, REMEMBER YOUR FORD TRACTOR-EQUIPMENT DEALER IS BEST QUALIFIED TO HELP YOU. HE HAS FACTORY-TRAINED SERVICE TECHNICIANS, GENUINE FORD PARTS, AND THE CORRECT TOOLS AND EQUIPMENT TO DO THE JOB RIGHT IN THE SHORTEST POSSIBLE TIME.

SERVICE DEPARTMENT  
FORD TRACTOR OPERATIONS  
FORD MOTOR COMPANY

### PARTS ORDERING INSTRUCTIONS

When ordering replacement parts from your Dealer, always state Model, Serial and Specification numbers as found on the nameplate of your engine. If a letter follows the specification number, make sure this is also stated. This information will enable the Dealer to quickly locate the correct part for your particular engine.



# TABLE OF CONTENTS

	Page
GENERAL INFORMATION	
POWER PLANT .....	4
GASOLINE .....	4
DRIVE TRAIN .....	4
Hydrostatic Transmission .....	4
BRAKE PEDAL .....	4
IGNITION SWITCH AND KEYS .....	4
REMOVING THE HOOD .....	4
SEAT AND TOOL COMPARTMENT .....	4
SINGLE POINT IMPLEMENT HITCH .....	5
HYDRAULIC LIFT .....	5
MANUAL LIFT .....	5
PARKING BRAKE .....	5
CHOKE CONTROL .....	5
THROTTLE LEVER .....	5
AMMETER .....	5
LIGHT SWITCH .....	6
HYDROSTATIC TRANSMISSION CONTROL LEVER .....	6
TIRES .....	6
OPERATING INSTRUCTIONS	
OPERATING SAFETY INSTRUCTIONS .....	6
PREPARING TRACTOR FOR OPERATION .....	6
WEIGHT FOR ADDED TRACTION .....	7
STARTING AND STOPPING ENGINE .....	7
To Start Engine .....	7
To Stop Engine .....	7
OPERATING HYDROSTATIC TRANSMISSION .....	8
Stopping and Shuttling the Tractor .....	8
Parking the Tractor .....	8
OPERATING THE PTO CLUTCH .....	8
MAINTENANCE AND LUBRICATION	
DAILY INSPECTION .....	9
WEEKLY INSPECTION .....	9
HYDROSTATIC TRANSMISSION .....	9
ENGINE CRANKCASE OIL .....	10
HYDROSTATIC TRANSMISSION OIL FILTER .....	10
LUBRICATING THE TRACTOR .....	10
SERVICING THE BATTERY .....	11
TIRE MAINTENANCE .....	11
Wide Base Front Tire Inflation Pressures .....	11
Wide Base Rear Tire Inflation Pressures .....	11
ADJUSTMENTS	
BRAKE ADJUSTMENT .....	12
STEERING ADJUSTMENT .....	12
HYDROSTATIC TRANSMISSION CONTROL LEVER LINKAGE ADJUSTMENT .....	12
TRACTOR STORAGE	
STARTING THE ENGINE AFTER STORAGE .....	13
SAFETY TIPS .....	16
SPECIFICATIONS .....	17
ASSEMBLY INSTRUCTIONS	
INSTALLING THE STEERING WHEEL .....	18
INSTALLING THE BATTERY .....	18
Safety Guidelines for Batteries .....	19

## DEFINITIONS OF DIRECTIONS

Reference to "right" and "left" side of mower is from operator's position when seated in normal

operating position. Reference to "forward" and "rearward" is likewise from operator's position.

## GENERAL INFORMATION

### POWER PLANT

Your tractor is powered by a single cylinder, 4-cycle engine that uses "regular" gasoline. **DO NOT MIX OIL WITH GASOLINE FOR THIS ENGINE!** Engine speed is controlled by means of a throttle lever conveniently mounted on the dash.

### GASOLINE

The engine manufacturer recommends use of non-leaded gasoline of 90 octane rating or higher.

### DRIVE TRAIN

#### Hydrostatic Transmission

Power from the engine is transmitted to the rear wheels through a drive shaft, hydrostatic transmission and differential. The hydrostatic transmission has no gears, and it provides an infinite selection of speeds with constant power to the rear wheels.

The transmission is coupled to an automatic-type limited slip differential that allows the tractor to be maneuvered without unnecessary wear to the rear tires and provides maximum traction.

#### BRAKE PEDAL (See Fig. 1)

The brake is operated by a foot pedal, conveniently located above the right foot rest. When the pedal is pushed down firmly, the brake is applied to stop tractor motion.

#### NOTE

The speed range lever will have to be placed in "NEUTRAL" to engage the safety start switch on tractor, in order to start the engine by turning the key switch clockwise. PTO switch must be "OFF".

### IGNITION SWITCH AND KEYS

Two ignition keys are supplied with each tractor. To turn ignition "ON", insert key in switch and turn clockwise (See Fig. 5). The switch is an automotive type combination ignition and starter. Ignition keys should be removed from the tractor when not in use, to prevent unauthorized operation.

### REMOVING THE HOOD

First remove the four fastening screws completely from the hood. Move to front of tractor and face the hood. Grasp it with each hand at about the middle of the curved portion. Lift up and work the hood up and clear of the steering wheel area and toward you. Be careful not to harm the ammeter.

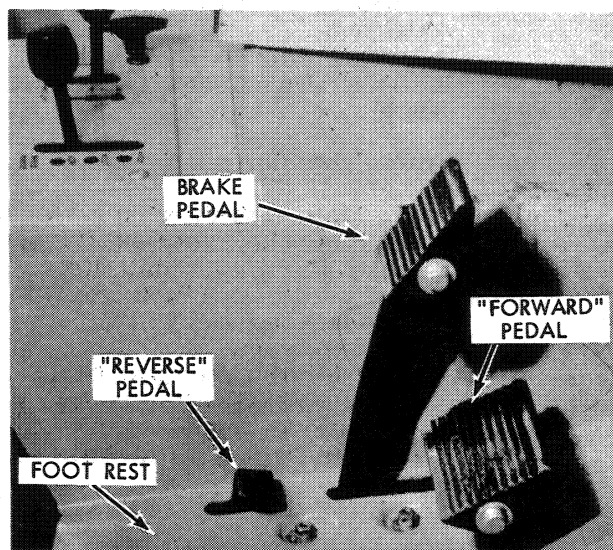


Figure 1.

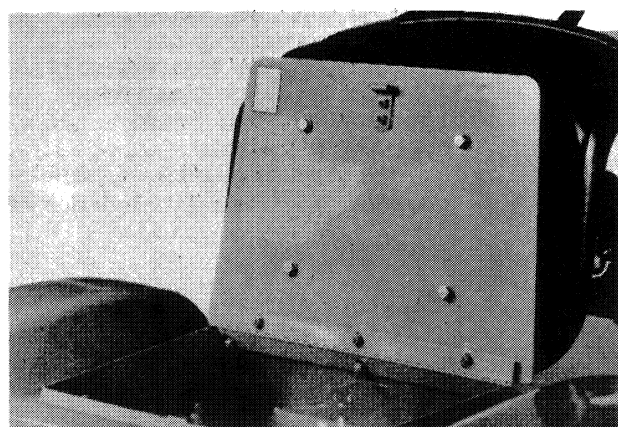


Figure 2.

### SEAT AND TOOL COMPARTMENT

The seat hinges forward as shown in Figure 2 to provide access to the tool compartment.

## SINGLE POINT IMPLEMENT HITCH (See Fig. 3)

A fixed hitch is supplied as standard equipment for the towing of implements.

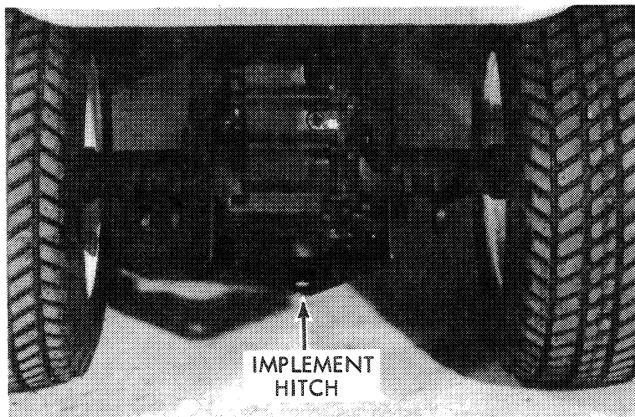


Figure 3.

## HYDRAULIC LIFT (See Fig. 4)

THE Hydraulic Lift is used to raise and to lower attachments used with the tractor. It can only be used with the engine running. Operate by pulling backward to raise, and pushing forward to lower. When the lever is released it will automatically return to the "LOCK" position.

### CAUTION

The Hydraulic Lift will do only what you control it to do. Keep hands and feet away from lift at all times when engine is running.

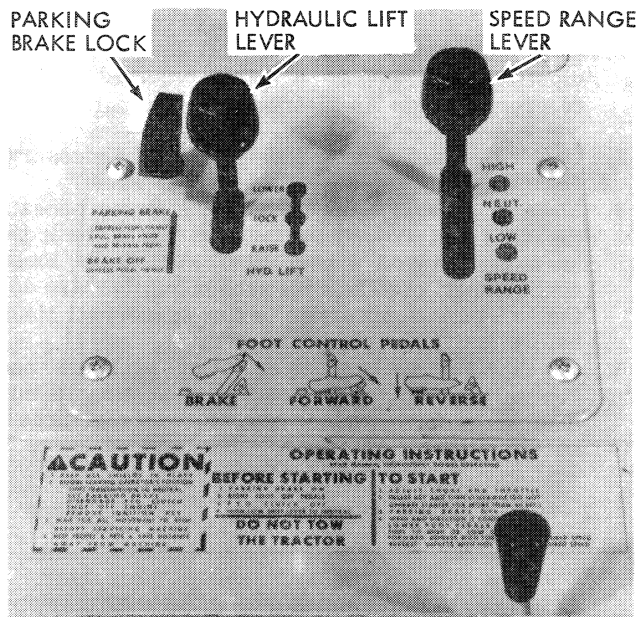


Figure 4.

## MANUAL LIFT

### IMPLEMENT LIFT HANDLE

The lift handle is used to manually raise and lower the same implements as the Hydraulic Lift, such as:

1. Snow Thrower
2. Trip Dozer Blade
3. Rotary Mower

The lift handle can be locked in various positions. To place an implement in working position, push lift handle forward until handle pin catches in desired notch. To place implement in transport position, pull lift handle back until handle pin is engaged in the rear notch. When mounting implements, place the lift handle in the forward position.

### PARKING BRAKE

A parking brake is provided to prevent movement of the tractor whether the engine is running or stopped. To set the brake, fully depress the brake pedal and pull up on parking brake knob to engage the brake lock (See Fig. 4). The brake is automatically released by depressing the brake pedal.

### CHOKE CONTROL (See Fig. 5)

Located on lower left side of instrument panel. When starting a cold engine, turn choke switch to "ON" position. After the engine starts turn choke to "OFF" position.

### THROTTLE LEVER (See Fig. 5)

Located on upper left side of instrument panel. The area of lever travel between the "SLOW", "MEDIUM", and "FAST" positions controls the flow rate of air and fuel mixture to the engine and this regulates engine speed. When the lever is moved upward toward the "FAST" position, the engine speed increases, and when it is pulled downward toward the "SLOW" position, the engine speed decreases.

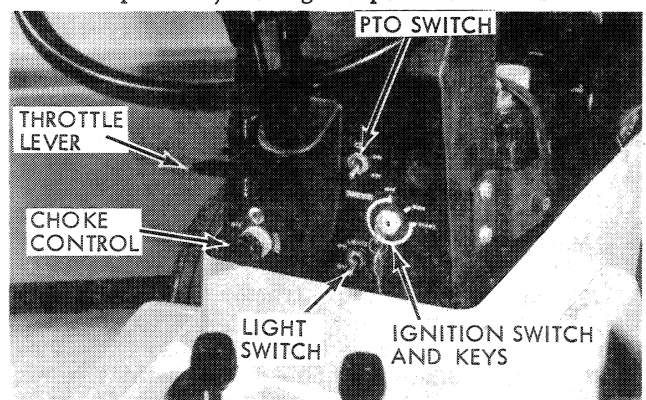


Figure 5.

### AMMETER

The ammeter is located immediately to the left of the steering wheel. It indicates the rate of battery charge or discharge. When possible, maintain sufficient engine speed so the ammeter indicates a charging rate to prevent unnecessary drain on the battery.

Thank you so much for reading.  
Please click the “Buy Now!”  
button below to download the  
complete manual.



After you pay.

You can download the most  
perfect and complete manual in  
the world immediately.

Our support email:

[ebooklibonline@outlook.com](mailto:ebooklibonline@outlook.com)