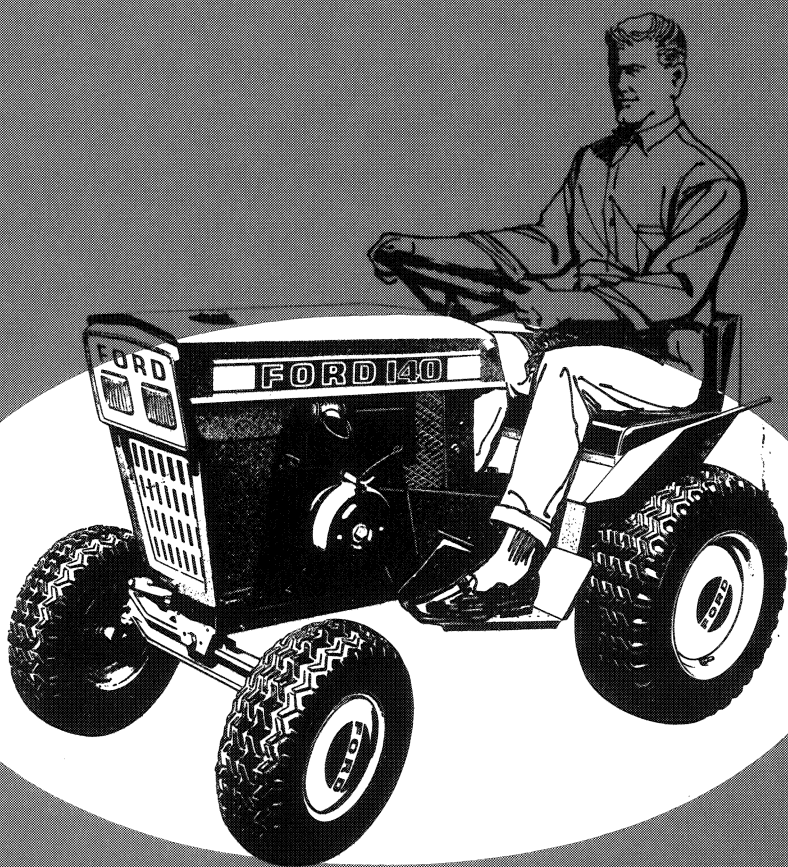


# FORD

## 140 LAWN & GARDEN TRACTOR

# Operator's Manual



Ford Tractor Operations

42014010  
Reprinted

## FOREWORD

THIS MANUAL PROVIDES SUGGESTED OPERATING TECHNIQUES TO HELP YOU OBTAIN EFFICIENT AND DEPENDABLE USE FROM YOUR NEW FORD 140 LAWN AND GARDEN TRACTOR. THIS MANUAL ALSO CONTAINS GENERAL INFORMATION, SPECIFICATIONS, SAFETY SUGGESTIONS, MAINTENANCE, AND SET-UP INFORMATION.

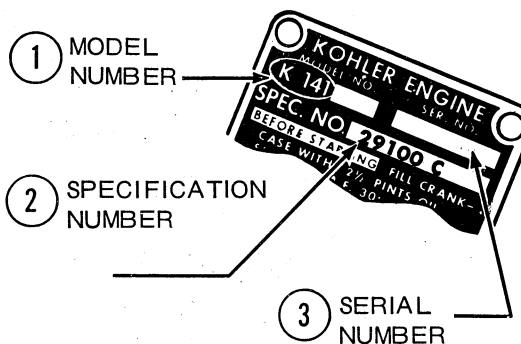
A WIDE VARIETY OF ACCESSORIES ARE AVAILABLE FOR USE WITH YOUR NEW TRACTOR. THESE ACCESSORIES WILL ADD PLEASURE TO YOUR OPERATING TIME. YOUR FORD TRACTOR-EQUIPMENT DEALER WILL HELP YOU DETERMINE WHICH ACCESSORIES WILL BE MOST USEFUL IN YOUR PARTICULAR SITUATION.

READ THIS MANUAL CAREFULLY BEFORE OPERATING YOUR TRACTOR. KEEP IT HANDY FOR FUTURE REFERENCE. IF, AT ANY TIME, YOU HAVE ANY QUESTIONS ABOUT YOUR TRACTOR, REMEMBER YOUR FORD TRACTOR-EQUIPMENT DEALER IS BEST QUALIFIED TO HELP YOU. HE HAS FACTORY-TRAINED SERVICE TECHNICIANS, GENUINE FORD PARTS, AND THE CORRECT TOOLS AND EQUIPMENT TO DO THE JOB RIGHT IN THE SHORTEST POSSIBLE TIME.

SERVICE DEPARTMENT  
FORD TRACTOR OPERATIONS  
FORD MOTOR COMPANY

### PARTS ORDERING INSTRUCTIONS

When ordering replacement parts from your Dealer, always state Model, Serial and Specification numbers as found on the nameplate of your engine. If a letter follows the specification number, make sure this is also stated. This information will enable the Dealer to quickly locate the correct part for your particular engine.



## WARRANTY

FORD MOTOR COMPANY warrants to the owner each part of this Ford Tractor and/or Ford Implement or Ford Equipment to be free, under normal use and service, from defects in material and workmanship for a period of six months from the date of sale to the original retail purchaser. This warranty shall be fulfilled by the Dealer (or, if the owner of the tractor is traveling or has become a resident of a different locality, by any authorized Ford Tractor-Equipment Dealer) by replacing or repairing at his place of business, free of charge including related labor, any such defective part.

This warranty shall not apply to (1.) vendor-warranted items such as tires and tubes (2.) to normal maintenance services (such as engine tune-up, fuel system cleaning and wheel, brake and clutch adjustments), or (3.) to normal replacement of service items (such as filters, spark plugs, ignition points, brake or clutch linings), or (4.) to deterioration of belts and exterior finish due to normal use or exposure, or (5.) to parts of any tractor or equipment that has been subject to negligence, alteration or accident, or which has been used with parts or equipment

not made or supplied by FORD MOTOR COMPANY if, in the reasonable judgement of the Company and/or its authorized Dealers, such use affects its performance or reliability, or (6.) to parts of any tractor that have been altered or repaired outside of the Dealer's place of business in a manner so as in the reasonable judgement of the Company to affect its performance or reliability.

This warranty is expressly IN LIEU OF any other express or implied warranty, including any implied WARRANTY OF MERCHANTABILITY or FITNESS and of any other obligation on the part of the Company and/or its authorized Dealers.

FORD MOTOR COMPANY reserves the right to make changes in its products at any time and without prior notice. When such changes are made, neither FORD MOTOR COMPANY or its Dealers assume any obligation to make these changes in products previously manufactured.

This warranty covers Ford Tractors and Equipment sold for use within the continental boundaries of the United States only.

## TABLE OF CONTENTS

GENERAL INFORMATION	Page
POWER PLANT .....	3
DRIVE TRAIN .....	3
Hydrostatic Transmission .....	3
CLUTCH - BRAKE PEDAL .....	3
SEAT AND TOOL COMPARTMENT .....	3
SINGLE POINT IMPLEMENT HITCH .....	3
RAISING THE HOOD .....	3
IGNITION KEYS AND LOCK .....	4
ELECTRO LIFT .....	4
CHOKE LEVER .....	4
THROTTLE LEVER .....	4
AMMETER .....	5
LIGHT SWITCH .....	5
PARKING BRAKE .....	5
HYDROSTATIC TRANSMISSION CONTROL LEVER .....	5
HYDROSTATIC TRANSMISSION CONTROL KNOB .....	6
ELECTRIC CLUTCH CONTROL .....	6
TIRES .....	6
 OPERATING INSTRUCTIONS	
OPERATING SAFETY INSTRUCTIONS .....	7
PREPARING TRACTOR FOR OPERATION .....	7
WEIGHT FOR ADDED TRACTION .....	8
STARTING AND STOPPING ENGINE .....	8
To Start Engine .....	8
Warm Weather Starting .....	9
Cold Weather Starting .....	9
To Stop The Engine .....	9
OPERATING HYDROSTATIC TRANSMISSION .....	9
Stopping And Shuttling The Tractor .....	10
Parking The Tractor .....	10
INSTALLING DRIVE BELTS .....	10
 MAINTENANCE AND LUBRICATION	
DAILY INSPECTION .....	10
WEEKLY INSPECTION .....	10
HYDROSTATIC TRANSMISSION .....	11
ENGINE CRANKCASE OIL .....	11
LUBRICATING TRACTOR .....	11
LUBRICATING THROTTLE AND CHOKE CONTROL CABLES .....	12
SERVICING THE BATTERY .....	12
TIRE MAINTENANCE .....	12
Wide Base Front Tire Inflation Pressures .....	13
Wide Base Rear Tire Inflation Pressures .....	13
 ADJUSTMENTS	
FOOT REST ADJUSTMENT .....	13
ADJUSTING THE TRACTION DRIVE BELT AND CLUTCH- BRAKE ASSEMBLY .....	13
STEERING WHEEL FREE-PLAY ADJUSTMENT .....	14
HYDROSTATIC TRANSMISSION CONTROL LEVER LINKAGE ADJUSTMENT .....	14
HYDROSTATIC TRANSMISSION TRACTION DRIVE BELT REPLACEMENT .....	15

<b>TRACTOR STORAGE</b>	<b>Page</b>
STARTING THE ENGINE AFTER STORAGE . . . . .	17
<b>SAFETY TIPS . . . . .</b>	<b>19</b>
<b>SOME SETUPS FOR UPSETS . . . . .</b>	<b>20</b>
<b>SPECIFICATIONS . . . . .</b>	<b>21</b>
<b>ASSEMBLY INSTRUCTIONS</b>	
REAR WHEELS . . . . .	22
INSTALLING THE STEERING WHEEL . . . . .	23
INSTALLING THE BATTERY . . . . .	23
PRE-OPERATING INSTRUCTIONS . . . . .	24

## GENERAL INFORMATION

### POWER PLANT

Your tractor is powered by a single cylinder, 4-cycle engine that uses "regular" gasoline. **DO NOT MIX OIL WITH GASOLINE FOR THIS ENGINE.** Engine speed is controlled by means of a throttle lever conveniently mounted on the dash.

Study this manual carefully until you are familiar with the care, maintenance, operation, and adjustment of your tractor. Proper attention to the instructions herein will assure maximum service life of the engine and highest operating efficiency.

### DRIVE TRAIN

#### Hydrostatic Transmission Tractors

Power from the engine is transmitted to the rear wheels through a drive belt, hydrostatic transmission and differential. The hydrostatic transmission has no gears, and it provides an infinite selection of speeds with constant power to the rear wheels.

The transmission is coupled to an automatic-type limited slip differential that allows the tractor to be maneuvered without unnecessary wear to the rear tires and provides maximum traction.

### CLUTCH-BRAKE PEDAL

The clutch and brake are operated by one foot pedal, conveniently located above the left foot rest, as shown in Figure 1.

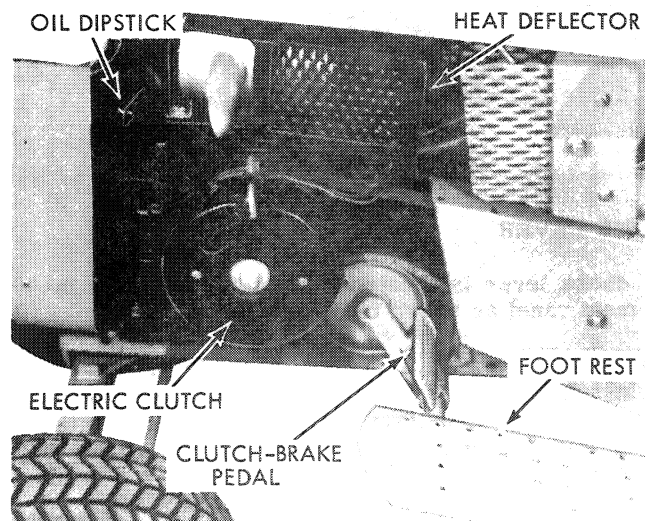


Figure 1.

When the clutch-brake pedal is pushed down, the clutch is disengaged and the brakes are applied to stop tractor motion.

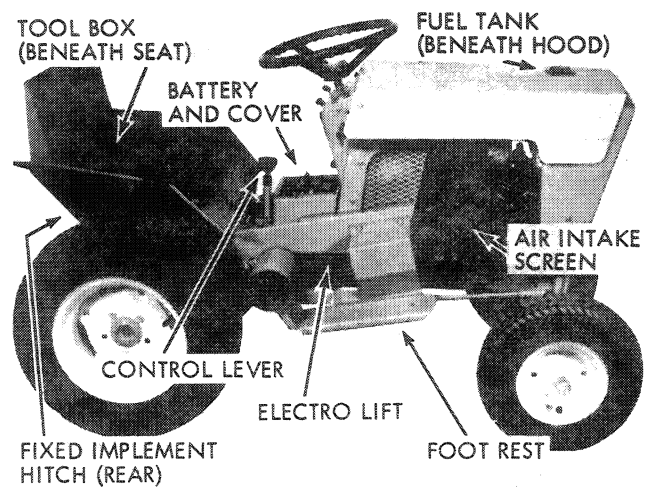


Figure 2.

### SEAT AND TOOL COMPARTMENT

The seat hinges forward as shown in Figure 3, to provide access to the tool compartment.

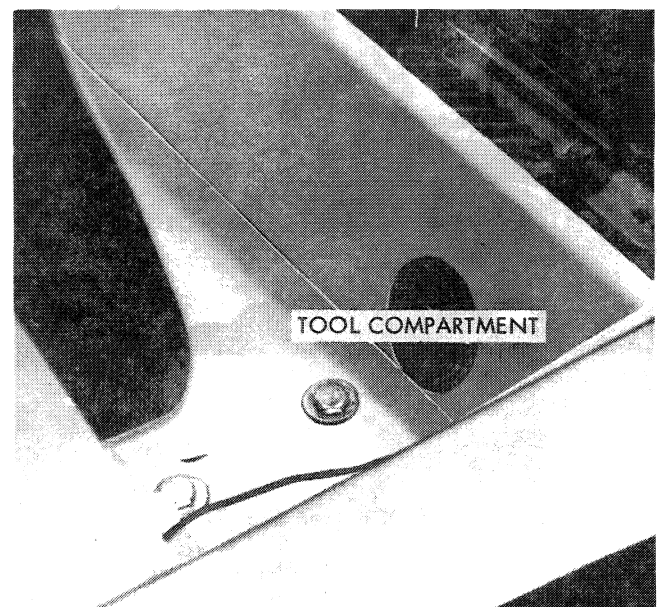


Figure 3.

### SINGLE POINT IMPLEMENT HITCH

A fixed hitch, the approximate location of which is shown in Figure 2, is supplied as standard equipment for the towing of implements. An accessory tool lift hitch is available at extra cost.

### RAISING THE HOOD

The engine hood is pivoted at the rear, permitting the front to be raised for filling the fuel tank, checking crankcase oil level, etc. To raise front of hood, grasp the sides and pull outward sufficiently to release the J-shaped locking brackets illustrated in Figure 5.



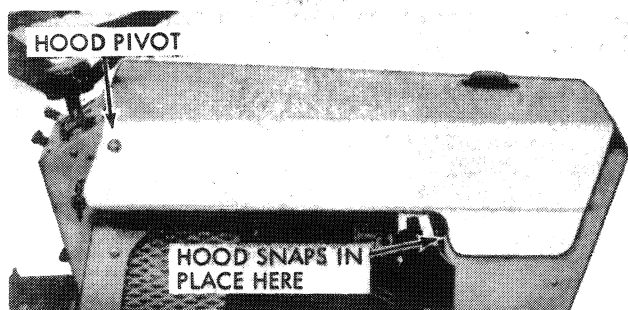


Figure 4.

Lift the front of the hood as shown in Figure 5, and lock it in position by pushing the hood support rod up into the notch in the hood latch bracket. Lower the hood as follows: Raise it slightly and disengage the hood supporting rod. Lower the hood and snap the locking brackets into place.

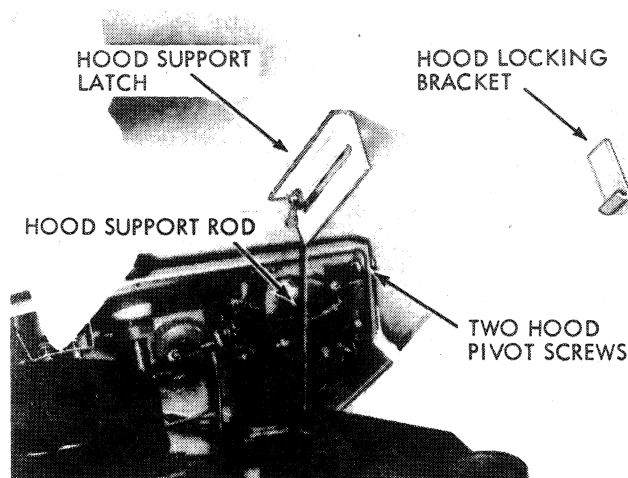


Figure 5.

#### IGNITION KEYS AND LOCK (See Fig. 7)

Two ignition keys are supplied with each tractor, taped to the ignition switch at time of delivery. To turn ignition "ON" insert key in switch and turn clockwise. This automotive type switch is a combination ignition and starter switch. Ignition keys should be removed when the tractor is not in use to prevent unauthorized operation.

#### ELECTRO LIFT (See Figs. 6A & 6B)

The Electro Lift is used to raise and lower attachments used with the tractor. The lift can only be used with the ignition on. The lift is operated by pressing the switch lever up or down and holding it in position. When the switch lever is released it will automatically go to the off position. The ammeter will show a full discharge when lift is in use. Exceeding full capacity or frequent cycling of Electro Lift may cause automatic circuit breaker to trip (ammeter will show "0"), which will reset itself within 60 seconds.

#### CAUTION

The Electro Lift will do only what you control it to do. Keep hands and feet away from lift when ignition is on or when in operation.

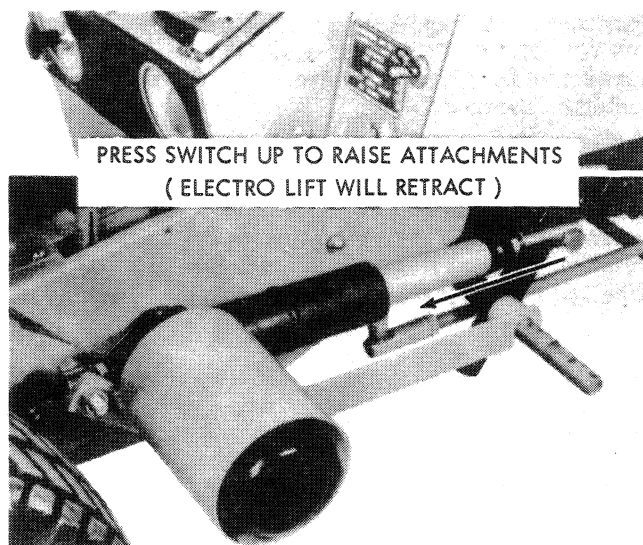


Figure 6A.

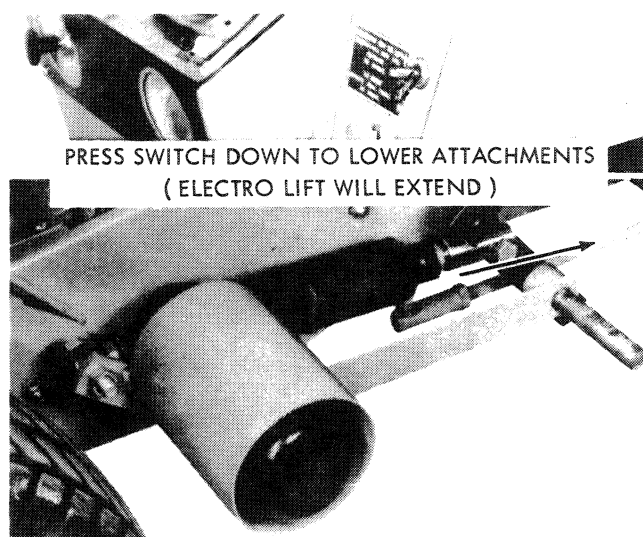


Figure 6B.

#### CHOKE LEVER

The choke lever is located on the left side of the instrument panel as shown in Figure 7.

When starting a cold engine, push the lever forward to close the choke. After the engine starts, pull the choke lever about halfway back to partially open the choke. Pull the lever all the way back to fully open the choke for normal operation after the engine is properly warmed. A warm engine usually requires less choke to start. Detailed instructions are given on Page 8 under "Starting and Stopping Engine."

#### THROTTLE LEVER

The throttle lever is located on the right side of the instrument panel as shown in Figure 7. It controls the flow rate of fuel to the engine and thus regulates en-

Thank you so much for reading.  
Please click the “Buy Now!”  
button below to download the  
complete manual.



After you pay.

You can download the most  
perfect and complete manual in  
the world immediately.

Our support email:

[ebooklibonline@outlook.com](mailto:ebooklibonline@outlook.com)