

FORD

Series 195

Tractor

Operator's Manual



Ford Tractor Operations

42019510

Reprinted



IF INCORRECTLY USED THIS MACHINE CAN CAUSE SEVERE INJURY. THOSE WHO USE AND MAINTAIN THE MACHINE SHOULD BE TRAINED IN ITS PROPER USE, WARNED OF ITS DANGERS, AND SHOULD READ THE ENTIRE MANUAL BEFORE ATTEMPTING TO SET UP, OPERATE, ADJUST OR SERVICE THE MACHINE.

CONTENTS

	Page
ADJUSTMENTS	10-13
GENERAL INFORMATION	5-6
LUBRICATION.	16-17
MAINTENANCE	14-15
OPERATING CONTROLS	6-8
OPERATING INSTRUCTIONS	9-10
SAFE PRACTICES FOR RIDING VEHICLES.	22
SET-UP INSTRUCTIONS	4-5
SETUPS FOR UPSETS	20
SPECIFICATIONS	19
STORAGE.	18

WARNING - DANGER

THIS TRACTOR ISEQUIPPED WITH AN INTERLOCK SYSTEM WHICH IS INTENDED TO PROTECT THE OPERATOR AND OTHERS FROM INJURY BY PREVENTING THE ENGINE FROM STARTING UNLESS THE PTO SWITCH IS IN "OFF" POSITION AND THE SPEED RANGE LEVER IS IN "NEUTRAL". IN THE INTEREST OF SAFE OPERATING CONDITIONS, THIS TRACTOR MUST NEVER BE OPERATED WITH THE INTERLOCK SYSTEM DISCONNECTED OR MALFUNCTIONING.

SET-UP INSTRUCTIONS

DEFINITION OF DIRECTIONS

Reference to "right" and "left" side of tractor is from operator's position when seated in normal operating position. Reference to "forward" and "rearward" is likewise from operator's position.

INSTALLING THE STEERING WHEEL (See Fig. 1)

IMPORTANT

Put a light coating of oil on the steering wheel shaft before mounting the steering wheel.

1. Straighten the front wheels.
2. Remove the large plastic bushing, sponge washer and nut from the bag of parts.
3. Place the plastic bushing on the steering column and then the sponge washer.
4. Remove the steering wheel from the box of parts and position it on the steering column so that:
 - a. The 3 spokes form a "Y" with the single spoke pointing down toward the operator.
 - b. The notch is on the top half.
 - c. The serrations in the wheel hub engage properly with those on the steering shaft.
5. Thread the nut onto the steering shaft and tighten securely.
6. Remove steering wheel cap from box of parts. Insert the tab of the cap into the notch inside the hub and push cap into the groove.

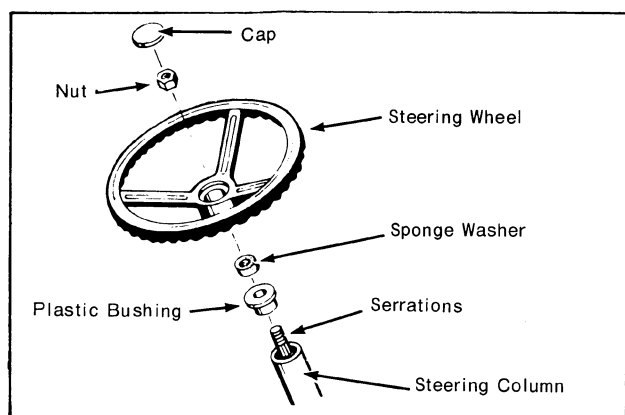


Figure 1

INSTALLING THE SEAT (See Fig. 2)

1. Remove seat assembly from box and (8) 1/4-20 x 5/8 hex hd screws, lockwashers and nuts from bag of parts.
2. Place two pieces of cardboard on inside of rear fenders. (Shown with dotted line in Fig. 2.) The purpose of the cardboard is to help avoid scratching the fenders when sliding in the seat assembly.

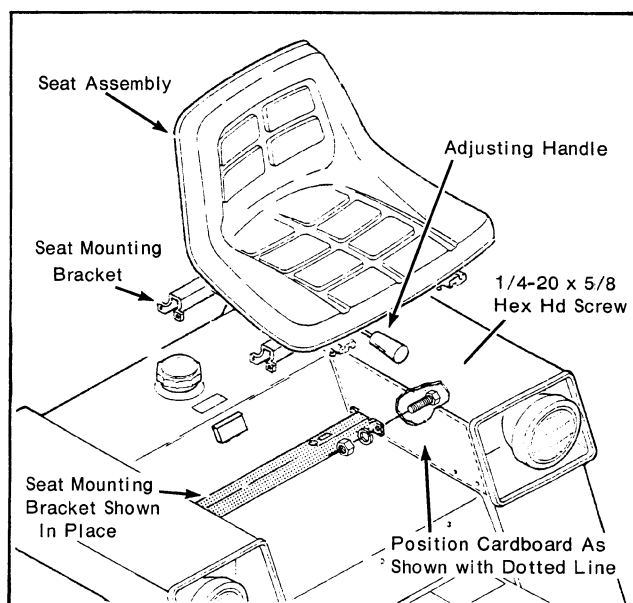


Figure 2

3. Slide seat assembly inside fenders and remove cardboard.
4. Secure seat assembly to fenders with (8) screws, lockwashers and nuts. Assemble screws from outside with lockwashers and nuts on inside of fenders.

PUTTING BATTERY IN SERVICE (See Fig. 3)

With proper care the battery should give the long service life built into it.

A battery which does not function properly is not necessarily worn out or defective. It may only need a good recharge. If battery trouble occurs, a full recharge and test by a competent battery man is recommended.

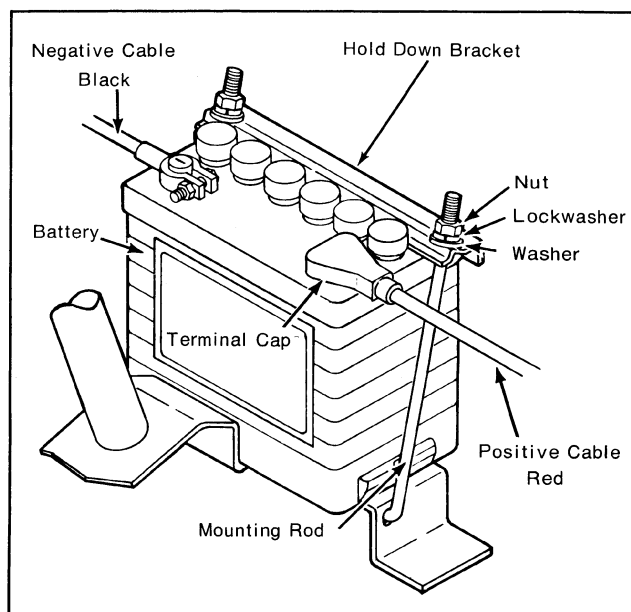


Figure 3

SET-UP INSTRUCTIONS

IMPORTANT

Do not use the headlights more than one hour for every two hours of operation. For more frequent use, provide a supplementary charge to the battery.

The battery needs to be charged before it can be placed in service. You can do this yourself or have it done by your Authorized Dealer or an automotive service station. Two quarts (1.9 Ltr) of 1.265 specific gravity electrolyte are required to fill your battery and can be purchased from your dealer or local auto supply store. Proceed as follows:

1. Make sure all switches are in "off" position.
2. Raise the hood by pushing in on the hood release button. (See "Operating Controls").
3. Disconnect the ground cable (black) from the negative (-) battery terminal. Then disconnect the positive cable (red) from the positive (+) terminal. **Be sure to disconnect the negative cable first.** Place both cables away from the battery.
4. Remove the nut, lockwasher and washer from each battery mounting rod and remove the battery mounting bracket (See Fig. 3).
5. Remove the battery from the tractor and place it on a wooden bench or a piece of wood or plastic. **DO NOT SET THE BATTERY ON A CONCRETE FLOOR.**
6. Before installing the electrolyte, study the instructions on the carton.

WARNING - DANGER

Take care to avoid contact with the acid of the battery electrolyte. It will cause painful and dangerous injury to eyes or skin in case of external contact. It will damage clothing and other articles if spilled or splattered. Before opening the electrolyte container or handling the electrolyte, study the antidote label on the container for instructions and procedure in case of accidental contact.

7. Remove filler caps and fill battery with electrolyte to proper level (See Fig. 20). **ALLOW BATTERY TO SIT FOR 20 MINUTES BEFORE PROCEEDING WITH STEP NO. 8.**

WARNING

Under no conditions should battery be over-filled. We cannot be responsible for damages if this warning is not observed.

8. With the filler caps still removed, place battery on charge at 3 amperes until specific gravity reading is 1.265-1.275. This should take approximately four hours. If room, battery and electrolyte temperatures are below normal, a longer charging period may be necessary to bring the specific gravity up to 1.265-1.275.
9. Insert filler caps into filler holes and place battery on mounting bracket with terminals toward the rear of tractor.
10. Place battery hold down bracket on front edge of battery.
11. Insert curved ends of battery mounting rods thru slotted holes in battery mounting bracket.
12. Slide other end of rods through holes in hold down bracket and secure in place with washers, lockwashers and nuts. Tighten snugly but do not overtighten.
13. Assemble the red positive (+) battery cable of the positive battery terminal and then the black negative (-) cable to the negative terminal.

WARNING - DANGER

Always connect the "ground" (black) cable last and remove it first whenever performing any battery maintenance. When the battery is being removed or reinstalled, make sure the positive and negative terminals do not contact metal tractor parts at the same time or arcing will result. Battery connections must be kept tight at all times. Loose cables will cause arcing and pitting of the connections and cause eventual failure.

14. Apply a light coat of petroleum jelly or chassis lubricant to both terminals and cable ends to prevent corrosion.
15. Slide the terminal cap over the positive battery terminal.

GENERAL INFORMATION

ENGINE

Your tractor is powered by a two cylinder, 4-cycle Kohler Engine Model No. K532QS. Engine speed is controlled by the throttle lever located on the left side of the instrument panel.

A separate Engine Manual, prepared by the engine manufacturer is supplied. Study this manual carefully until you are familiar with the maintenance, operation, adjustment and repair of your engine. Proper attention to the engine manufacturer's directions will as-

sure maximum service life of the engine and highest operating efficiency.

GASOLINE

The engine manufacturer recommends the use of regular leaded or non-leaded gasoline or 85 octane minimum. **DO NOT MIX OIL WITH GASOLINE!**

GENERAL INFORMATION

TIRES

The tires are over-inflated at the factory for shipping purposes. Before operation, check all tires for proper air pressure (See Maintenance).

DRIVE TRAIN

Power from the engine is transmitted to the rear wheels through a drive shaft, hydrostatic transmission and differential. The hydrostatic transmission has no gears, and it provides an infinite selection of speeds with constant power to the rear wheels.

The transmission is coupled to an automatic-type limited slip differential that allows the tractor to be maneuvered without unnecessary wear to the rear tires and provides maximum traction.

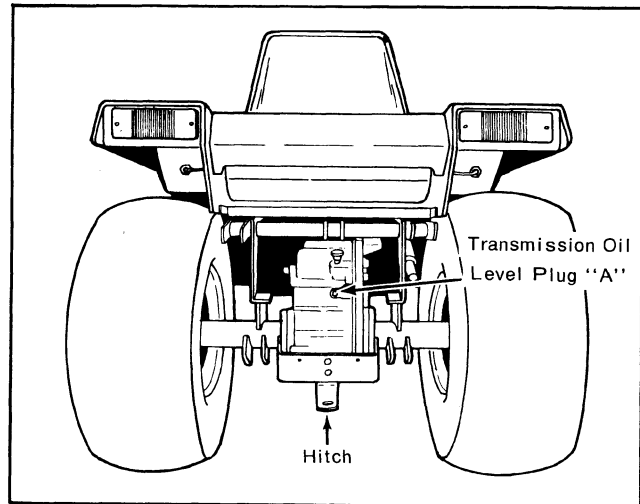


Figure 4

SINGLE POINT IMPLEMENT HITCH (See Fig. 4)

A fixed hitch is supplied as standard equipment for the towing of implements.

OPERATING CONTROLS

WARNING - DANGER

The controls will do only what they are intended to do. Study the instructions below and learn to use them correctly. Keep hands and feet away from controls unless you intend to use them.

HOOD RELEASE (See Fig. 6)

Push in to release the hood, permitting access to the engine and battery area.

AMMETER (See Fig. 6)

The ammeter indicates the rate of battery charge or discharge. When possible, maintain sufficient engine speed so the ammeter indicates a charging rate to prevent unnecessary drain on the battery.

HOUR METER (See Fig. 5)

The hour meter indicates the number of hours the tractor has been operated. It can be used to keep track of maintenance intervals and the amount of time required to perform various tasks. The hour meter operates whenever the engine is running or whenever the ignition key is in the "ON" position.

IMPORTANT

The hour meter will operate up to 90 seconds after the ignition is turned "off".

The small white hand circles the dial every two minutes to show that the meter is working. The large red hand is the hour indicator. The small yellow hand shows the total number of hours the tractor has operated in 120 hour intervals. To read elapsed hours, total the readings from the red and yellow hands.

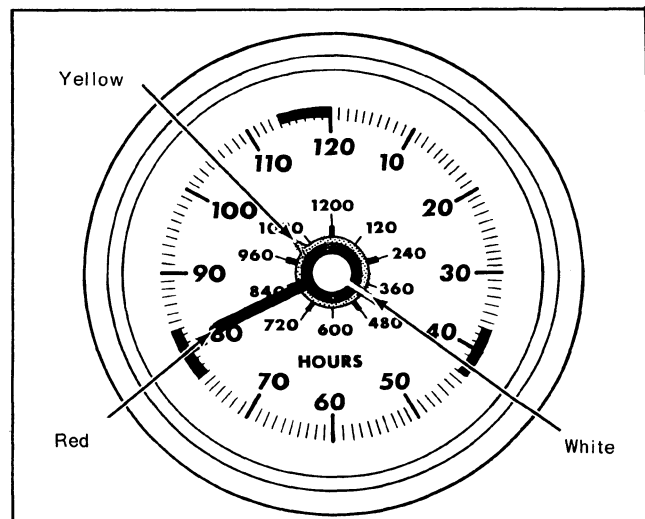


Figure 5

Thank you so much for reading.
Please click the “Buy Now!”
button below to download the
complete manual.



After you pay.

You can download the most
perfect and complete manual in
the world immediately.

Our support email:

ebooklibonline@outlook.com