

# FORD

## Series 417 Cultivator

For 1710 Offset Tractor



# OPERATOR'S MANUAL

42041720

Reprinted



**Figure 1**  
**Series 417 Cultivator on a Ford 1710 Offset Tractor.**

## TO THE OWNER

BE SURE THIS OPERATOR'S MANUAL IS KEPT WITH THIS MACHINE AT ALL TIMES, REGARDLESS OF OWNERSHIP.

Your new cultivator for Ford 1710 Offset Tractor is designed to meet today's exacting operating requirements. The ease of operation and ability to adjust to field conditions lighten your work and shorten your hours on the job.

You are urged to consult your local Ford Dealer concerning unusual conditions or special applications. Let the experience of your dealer and the organizations associated with him serve you.

Be sure to read the instructions for Adjusting and Operating in this manual. Check each item referenced to acquaint yourself for trouble-free service. Remember, a cultivator which is properly lubricated and adjusted saves time, labor, and fuel.

After the operating season, thoroughly clean your cultivator and fertilizer units and inspect it. Preventive maintenance pays dividends. Your dealer has original equipment parts which assure proper fit and best performance. He is able to recondition your equipment to a like-new condition.

When in need of parts for the cultivator basic unit, always specify the serial number including any prefix and suffix letters. The serial number of the cultivator is located on the lift arm on the right side. Write this serial number in the space provided below.

---

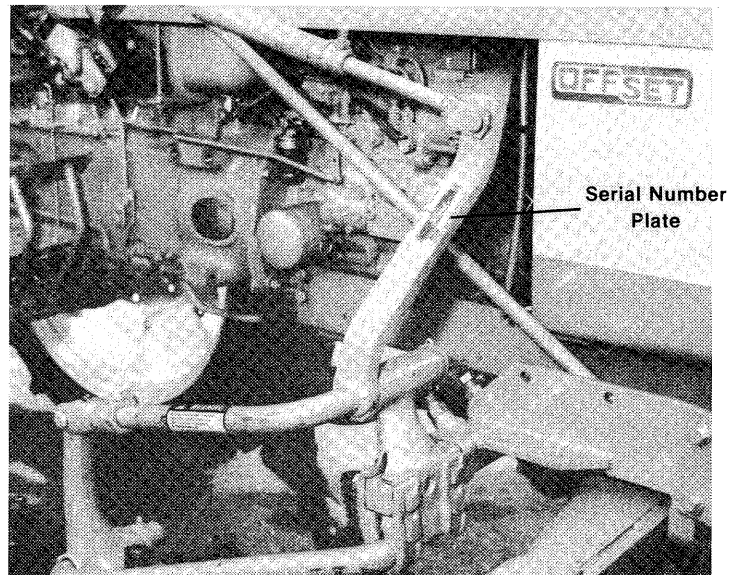
**Serial No.**

---

**Date Purchased**

Optional equipment and accessories are available. Disregard the instructions for equipment not on your machine.

**METRIC MEASUREMENTS**—A standard of metric measurement shown as the International System of Units (SI) has been adopted for worldwide use. English Units followed by Metric Equivalents are used throughout this manual. (Metric in Parenthesis.)



**Figure 2**

# TABLE OF CONTENTS

# PAGE

To the Owner . . . . .	1
Introduction . . . . .	3
Safety Precautions . . . . .	4
Adjusting and Operating . . . . .	
General . . . . .	5
Gang Beam take-up bolts . . . . .	5
Pressure Springs . . . . .	5
Height of lift . . . . .	6
Lift rod adjustment . . . . .	6
Ground tools-standard adjustment . . . . .	7
Spring Trips . . . . .	7
Shield . . . . .	7
Wedge bolt clamps . . . . .	7
Fertilizer attachment . . . . .	8
Lubrication . . . . .	8
Cleaning the fertilizer hopper . . . . .	9
T-Agitator attachment . . . . .	9
Fertilizer Sowing Table . . . . .	10
Cultivator . . . . .	
General . . . . .	11
Universal mounting frame . . . . .	12
Front Cultivator . . . . .	12
Left side of tractor . . . . .	13
Rear mounted cutlivator . . . . .	13
Set-up and assembly instructions for fertilizer attachment . . . . .	
Fertilizer attachment . . . . .	14-16
Optional Equipment . . . . .	
Down Pressure Spring . . . . .	17
Disk Hiller . . . . .	18
Shield-Spring trip tool equipment . . . . .	18
Measurement Units . . . . .	19
Specifications . . . . .	20
Safety Decal . . . . .	Inside Back Cover

# INTRODUCTION

The cultivator is a one-row-cultivator designed for Ford 1710 Offset Tractor equipped with hydraulic lift system. Cotton, Corn, Tobacco, and other crops may be cultivated when planted in rows spaced from 45" to 72" (1143 to 1800 mm) apart. The operator has a clear unobstructed view of the row due to the offset of the tractor seat. Small young crops are followed accurately.

**CULTIVATOR**—Consists of Front Section Tool Equipment which includes tool bars, standard clamps, 6 spring trip standards.

**REAR SECTION TOOL EQUIPMENT**—For tractors with 3 point hitch includes non-adjustable rear section with 2 clamps, 2 long spring trip standards, 45" to 72" (1143 to 1800 mm) rows can be cultivated with this unit.

All adjustments for depth and lifting at the ends of the field are accomplished from the driver's seat by means of the hydraulic lift system control levers. The three point hitch position control lever controls the rear section and the auxiliary hydraulic control lever raises or lowers the front section. Instant and positive depth control enables the driver to cultivate hard and soft spots in the field to a uniform depth.

The universal mounting frame consists of two parallel-action gang assemblies mounted one on each side at the front of the tractor. Each assembly includes a frame, push pipe with pressure spring, parallel-acting gangs, and a tool bar attaching bracket. The attaching bracket is provided with a keyhole slot to facilitate attaching and detaching the ground working tools without disturbing their adjustment.

The cultivator gangs are easily and quickly attached or detached without disturbing any of the set adjustments when the tractor is to

be used for some other purpose. This assures the cultivator working at the same depth and in the same relation to the row when it is re-attached as it did when last used.

The ground working tools for front section have 1¼" round standards. The standard clamps are the single wedge-bolt type which are easily and quickly adjusted. The clamp is designed so that a single wedge bolt secures the vertical adjustment of the standard and, at the same time the position of the clamp along the tool bar. Tool bar extensions are provided for the sweep running next to the row and these have ample adjustment so the sweep may be set closer to or farther from the row, as desired.

**OPTIONAL:**

**FERTILIZER UNITS**—For placing fertilizer beside the crop row.

The fertilizer unit, used for side dressing consists mainly of the countershaft drive assembly, and hopper drive mounts.

The non-corrosive fiber glass hopper is the star feed type with T-agitator revolving in the hopper bottom to carry the fertilizer under an adjustable gate to the discharge opening. The hopper has a capacity of 117 pounds (53 kg) of average commercial fertilizer.

The quantity of fertilizer sown is regulated by adjusting the gate opening with the lever outside the hopper, or by changing the sprocket on the feed shaft. Use is based on average free-running commercial fertilizer and 45" (1143 mm) row spacing.

A corrugated neoprene fertilizer hose, for use with the fertilizer unit, is standard with the unit. The corrugated neoprene hose is flexible and can stretch and retract without losing its shape.

Thank you so much for reading.  
Please click the “Buy Now!”  
button below to download the  
complete manual.



After you pay.

You can download the most  
perfect and complete manual in  
the world immediately.

Our support email:

[ebooklibonline@outlook.com](mailto:ebooklibonline@outlook.com)