

VERSATILE

Operator's Manual



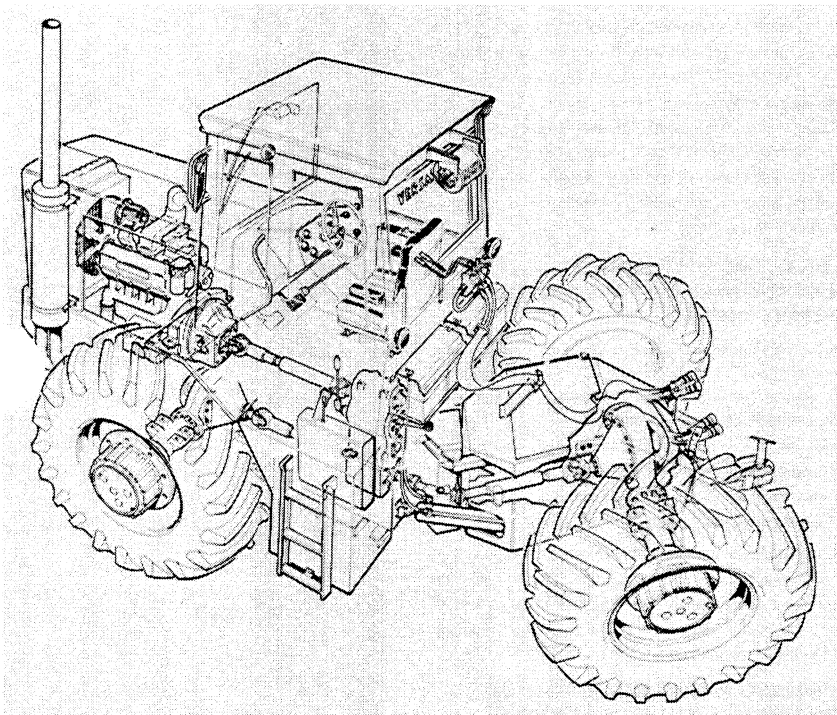
4WD Tractor
700

1972 - 1975



42070030
Reprinted

FOUR-WHEEL DRIVE TRACTOR



MODEL 700

OWNER'S/OPERATOR'S MANUAL



VERSATILE WARRANTY

VERSATILE MANUFACTURING LTD. (VERSATILE) warrants each item of new Versatile equipment sold by it to be free from defects in material and workmanship under normal use and service. The sole obligation of Versatile to the Dealer under this warranty is limited to repairing or replacing, as Versatile may elect, any part or parts that prove in Versatile's judgment to be defective in material or workmanship within one year after delivery to the original purchaser, under normal farm use. Such a defective part or parts will be replaced or repaired free of charge only to the original purchaser, such repair or replacement will be done at the location of the selling Versatile Dealer. Purchaser must give written notice to the Authorized dealer from whom equipment was purchased, of any claimed defect and the Dealer will have a reasonable time under the circumstances then existing to repair or replace said part or parts found to be defective.

NOTE: THE SOLE REMEDY OF THE PURCHASER FOR BREACH OF THIS WARRANTY IS THE REPAIR OR REPLACEMENT OF DEFECTIVE PARTS.

This warranty does not extend to the engine or tires on Versatile tractors which are manufactured by others, and which carry separate warranties from said manufacturers. There are no representations, warranties, or conditions express or implied, statutory or otherwise, except those herein contained and no agreement collateral otherwise, except those herein contained and no agreement collateral hereto shall be binding upon either party unless in writing hereon or attached hereto, signed by purchaser and accepted by Versatile at its head office.

Versatile's liability under this warranty is limited to the repairing or replacing of parts, as aforesaid, and Versatile shall in no event be liable to the Purchaser for consequential damages or loss of profits on crops sustained by it as a result of any defect in material or workmanship of any item of equipment covered by this warranty.

NOTE: THERE ARE NO WARRANTIES, EXPRESS OR IMPLIED, INCLUDING WARRANTIES OF MERCHANTABILITY OR FITNESS FOR A PARTICULAR PURPOSE BY VERSATILE OR ITS AUTHORIZED DEALER, REGARDING VERSATILE EQUIPMENT EXCEPT THE WARRANTY AGAINST DEFECTS IN MATERIAL OR WORKMANSHIP EXPRESSED HEREIN. NO PERSON IS AUTHORIZED TO BIND VERSATILE FOR ANY OTHER WARRANTY WHATSOEVER.

TABLE OF CONTENTS

section	page
Specifications	3
Safety Rules	8
Controls and Instruments	10
Operation	17
Fuels, Fluids , and Lubricants	26
Routine Service and Lubrication	30
Troubleshooting	53
Storage and Preparation	55
Electrical System	58
Hydraulic System	60

INTRODUCTION

We at VERSATILE Manufacturing Ltd. are pleased that you have chosen a VERSATILE Four-Wheel Drive Tractor for your farming operation. The founders of VERSATILE have pioneered the development of the four-wheel drive tractor for agricultural use. It has evolved through the ideas and suggestions which have been submitted to us by customers such as yourself.

We ask that you study this manual and adopt the preventative maintenance program outlined in it. Preventative maintenance will provide you with trouble free service for years to come. The suggested schedule has been designed to meet most operating conditions. It may be necessary to adjust your maintenance program to suit your specific operating conditions and to perform the maintenance more often than outlined.

As the purchaser of a VERSATILE Four-Wheel Drive Tractor you have also received a Cummins' Operation and Maintenance Manual. We would ask that for maintenance on the engine which is not covered by your tractor manual, you follow the instructions outlined in the Cummins manual. Before placing the tractor in service become familiar with all the procedures described in both the engine manual and the tractor manual.

Your dealer is factory-trained to provide you with genuine parts and professional repair service. Consult him regarding your service needs. He is working for you.

SERIAL NUMBER LOCATIONS

Important: When ordering parts, state the serial number of the tractor and/or engine, whichever applies. The tractor serial number is stamped on the rear of the front frame section and also appears as a metal tag near the clutch pedal in the cab. The engine (Cummins) serial is on a metal tag located on the rear of the engine's left hand cylinder bank.

Write your model and serial number information here:

TRACTOR

MODEL **700**

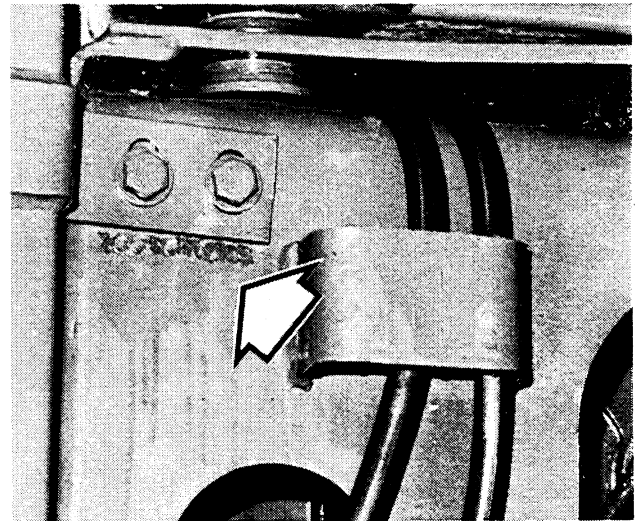
SERIAL _____

ENGINE

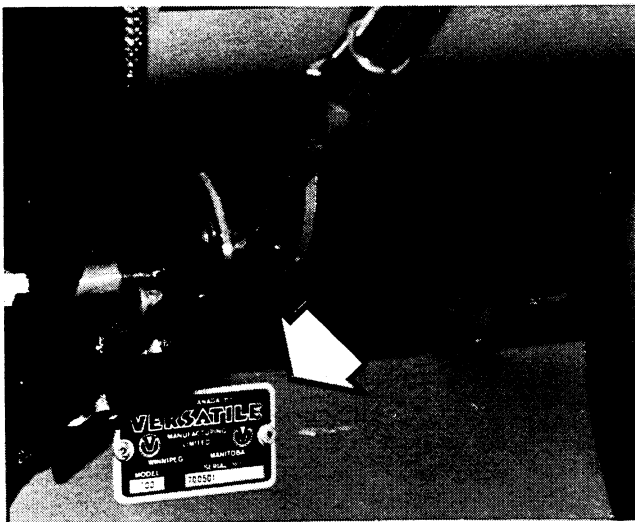
MAKE **Cummins**

MODEL **V555**

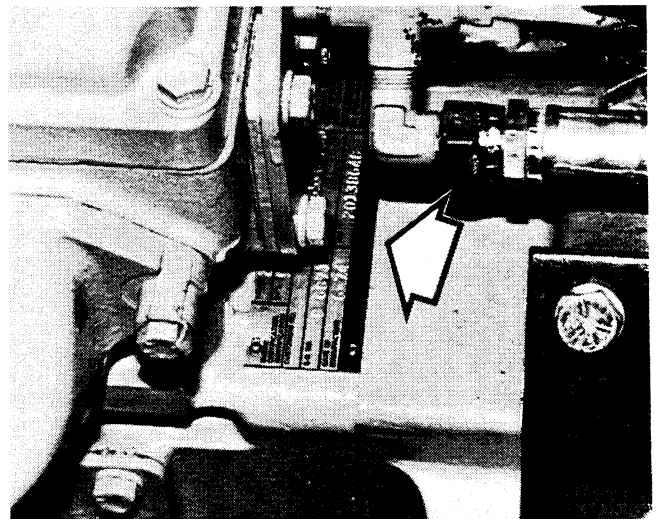
SERIAL _____



FRAME STAMP



CAB PLATE



ENGINE PLATE



MODEL 700 TRACTOR

Thank you so much for reading.
Please click the “Buy Now!”
button below to download the
complete manual.



After you pay.

You can download the most
perfect and complete manual in
the world immediately.

Our support email:

ebooklibonline@outlook.com