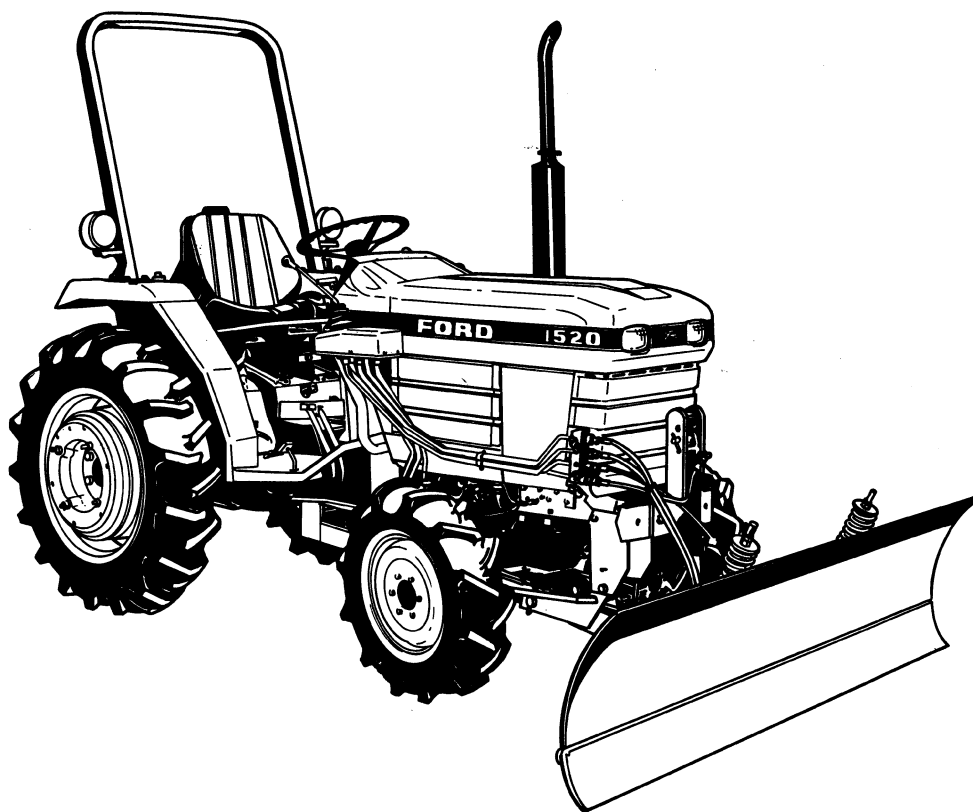


FORD

Series 702C Front Blade

1320 and 1520 Tractors



OPERATOR'S MANUAL

42070218

Reprinted

FOREWORD

THIS MANUAL CONTAINS INFORMATION ON THE OPERATION OF YOUR NEW FORD SERIES 702C FRONT BLADE. ALSO INCLUDED IS INFORMATION ON MAINTENANCE, REMOVAL AND STORAGE, SHIPPING INFORMATION, AND ASSEMBLY.

READ THIS MANUAL CAREFULLY BEFORE OPERATING YOUR FRONT BLADE, AND KEEP IT HANDY FOR FUTURE REFERENCE. IF AT ANY TIME, YOU HAVE A SERVICE PROBLEM WITH YOUR FRONT BLADE, REMEMBER YOUR FORD NEW HOLLAND DEALER IS BEST QUALIFIED TO SERVICE IT; HE HAS FACTORY-TRAINED SERVICE TECHNICIANS, GENUINE FORD PARTS, AND THE CORRECT TOOLS AND EQUIPMENT TO DO THE RIGHT JOB IN THE SHORTEST POSSIBLE TIME.

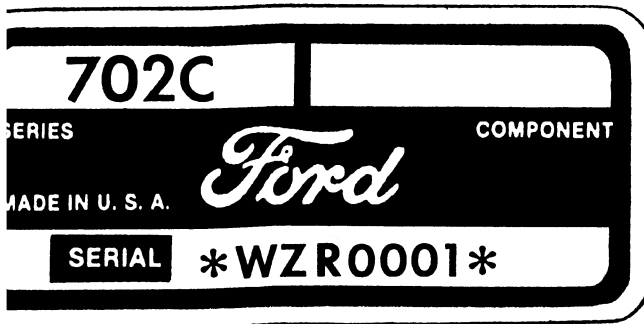
FORD NEW HOLLAND, INC.



FORD 702C FRONT BLADE

TABLE OF CONTENTS

	Page
FOREWORD	1
SAFETY PRECAUTIONS	3, 4
GENERAL INFORMATION	4
OPERATION	5
CONTROLS	5
LUBRICATION & MAINTENANCE	5, 6
REMOVAL	7
STORAGE	7
PARTS LISTING	
BLADE COMPONENTS	8, 9, 10
HYDRAULIC COMPONENTS	11
ASSEMBLY	
MOUNT BRACKETS	12
REAR-FRAME	12
FORWARD FRAME	13
BLADE TO FORWARD FRAME	13
TRIP SPRINGS INSTALLATION	14
LIFT CYLINDER MOUNTING BRACKET	14
LIFT CYLINDER INSTALLATION	15
HYDRAULIC HOSES INSTALLATION	15
HYDRAULIC ANGLE (OPTIONAL) KIT INSTALLATION	16, 17, 18
MECHANICAL ANGLE LINK INSTALLATION	19
SKID SHOES INSTALLATION	19
TORQUE CHARTS	20
SAFETY DECAL	21
OWNER ASSISTANCE	22



The serial number plate is located at the front of the forward frame. Record the model and serial number of your front blade.

Model: _____

Serial Number: _____

SAFETY PRECAUTIONS

The following precautions are suggested to help prevent accidents.

A careful operator is the best operator. Most accidents can be avoided by observing certain precautions. Read and take the following precautions before operating this equipment to help prevent accidents. Equipment should be operated only by those who are responsible and instructed to do so.

THE EQUIPMENT

1. Read this manual carefully to acquaint yourself with the equipment. Working with unfamiliar equipment can lead to accidents.
2. Do not alter your equipment.
3. Keep all shields and guards in place and properly tighten all mounting hardware. Replace any missing or damaged shields or guards.
4. Periodically inspect all moving parts for wear and replace with authorized service parts if an excessive amount of wear is present.
5. If safety decals are missing, illegible, or damaged they should be replaced. See list of decals on page 21.
6. Do not modify or alter or permit anyone to modify or alter this equipment or any of its component or any equipment function without first consulting a Ford New Holland Dealer.
7. Keep safety decals clean of dirt and grime.

OPERATING THE BLADE

1. Never allow anyone to ride on the blade.
2. Clear the area of people and debris before commencing operation.
3. Do not make mechanical adjustments while the unit is in motion, the blade is raised, or the engine is running.
4. Do not attempt to repair or tighten hydraulic hoses when under pressure, when the tractor engine is running, or when the blade is raised.

5. Never leave blade in raised position.
6. All hydraulically or mechanically elevated components must be blocked to prevent accidental lowering or must be lowered to the ground when adjustments or repairs are made.
7. Avoid sharp turns with brakes, drive slowly over rough ground, side hills, and around curves to avoid tipping.
8. When parking, make sure the parking brakes are set and the front blade is fully lowered.
9. Place adequate counterweight on the rear of the tractor and move wheels to recommended settings for optimum stability.
10. Escaping hydraulic fluid under pressure can penetrate the skin causing serious injury.

DO NOT use your hand to check for leaks. Use a piece of cardboard or paper to search for leaks.

Stop engine and relieve pressure before connecting or disconnecting lines.

Tighten all connections before starting engine or pressurizing lines.

If any fluid is injected into the skin obtain medical attention immediately or gangrene may result.

THE TRACTOR

1. Read the Operator's Manual carefully before using the tractor. Lack of operating knowledge can lead to accidents.
2. Use an approved ROPS and seat belt for safe operation. Overturning a tractor without a ROPS can result in death or injury. If your tractor is not equipped with a ROPS and seat belt see your Ford New Holland Dealer.
3. Always use the seat belt when the ROPS is installed. Do not use seat belt if the ROPS is removed from the tractor.

- . Use the handholds and step plates when getting on and off the tractor to prevent falls. Keep steps and platform cleared of mud and debris.
- . Do not permit anyone but the operator to ride on the tractor. There is not a safe place for extra riders.

OPERATING THE TRACTOR

- . Do not start the engine while standing beside the tractor. Always sit in the tractor seat while starting the engine.
- . Do not run the tractor engine in an enclosed building without adequate ventilation. Exhaust fumes can suffocate you.
- . The operator should never get off the tractor while it is in motion.
- . Do not allow an open flame near the fuel tank or battery, to prevent fires and explosions.
- . Use the flasher/turn signal lights when traveling on public roads both day and night, unless prohibited by law.
- . Make sure the PTO shield is installed when using PTO-driven equipment, and always replace the PTO shaft cap when the PTO is not in use.
- . Always bring the tractor to a complete stop, and shut off the engine before getting off the tractor.
- . Do not park the tractor on a steep incline.
- . Use care when operating on steep grades to maintain proper stability.
- . Keep the tractor in gear when going down hill.
- . If the front end tends to rise, install front end or front wheel weights. Do not continue to operate with a "light" front end.

- 12. Drive the tractor with care and at speeds compatible with safety, especially when operating over rough ground, crossing ditches, slopes, or when turning to avoid upsets.

GENERAL INFORMATION —

The Ford Series 702C Front Blade is designed for quick and easy installation on the Ford 1320 and 1520 (2WD or 4WD) Tractors. The unit is available with a 6-1/2' blade. Five positions can be obtained for manual angling blade operation.

Skid shoes, trip springs, and blade lock-out are standard equipment with each blade.

A hydraulic angle package is available as optional equipment.

WHenever you see this symbol



ATTENTION!
IT MEANS: BECOME ALERT!
YOUR SAFETY IS INVOLVED!

OPERATION

Operation of the Ford Series 702C Front Blade will depend greatly on the type of work it is used to do, the location, and numerous operational factors. There are several basic points, however, which will aid to better front blade operation:

1. Blades are designed for moving snow and loose dirt. Do not abuse blade by prying rocks or stumps with high impact loads.
2. Skid shoes when used for snow removal, should be set properly to avoid gouging of the surface material.
3. Use the unit wisely. Do not overload the tractor front blade capacity.
4. Use the float position on the tractor valve for back blading.
5. Use the float position on the tractor valve to allow the blade to follow the contours of the ground and remove loose surface material only.

CONTROLS

The hydraulic lift and optional hydraulic angle are operated by a single control lever located on the right side of the tractor. To operate the control valve, actuate the control lever in the following manner:

MOVE LEVER	RESULT
Rearward	Blade Moves Upward
Forward	Blade Moves Downward
Total Forward	Blade Float (Hydraulic)

FOR OPTIONAL HYDRAULIC ANGLE

MOVE LEVER	RESULT
To the Right	Blade Angles Right
To the Left	Blade Angles Left


NOTE: If blade fails to respond in indicated manner, re-check installation instructions for proper orientation of hoses to the valve.

NOTE: REMOVE BOTH MECHANICAL ANGLING LINKS WHEN HYDRAULIC ANGLE OPTION IS USED.

LUBRICATION AND MAINTENANCE

The Ford Series 702C Front Blade is designed for the minimum amount of maintenance. Listed below are points that should be checked occasionally.

CHECK TORQUE ON ALL BOLTS AND CHECK ENTIRE UNIT OVER THOROUGHLY AFTER FIRST TEN HOURS OF OPERATION.

 **WARNING** - Escaping hydraulic/diesel fluid under pressure can penetrate the skin causing serious injury.

DO NOT use your hand to check for leaks. Use a piece of cardboard or paper to search for leaks.

Stop engine and relieve pressure before connecting or disconnecting lines.

Tighten all connections before starting engine or pressurizing lines.

If any fluid is injected into the skin obtain medical attention immediately or gangrene may result.

1. Repair any hydraulic oil leak promptly to avoid damage to the system and loss of hydraulic oil.
2. Check the level of hydraulic oil in the tractor daily and add, if necessary.
3. Replace the hydraulic hoses immediately if they are cut or damaged.
4. Check all mounting and assembly bolts periodically and tighten as necessary.
5. Lubricate grease fitting, on main pivot pin, daily. Clean fitting thoroughly before using grease gun.

Thank you so much for reading.
Please click the “Buy Now!”
button below to download the
complete manual.



After you pay.

You can download the most
perfect and complete manual in
the world immediately.

Our support email:

ebooklibonline@outlook.com