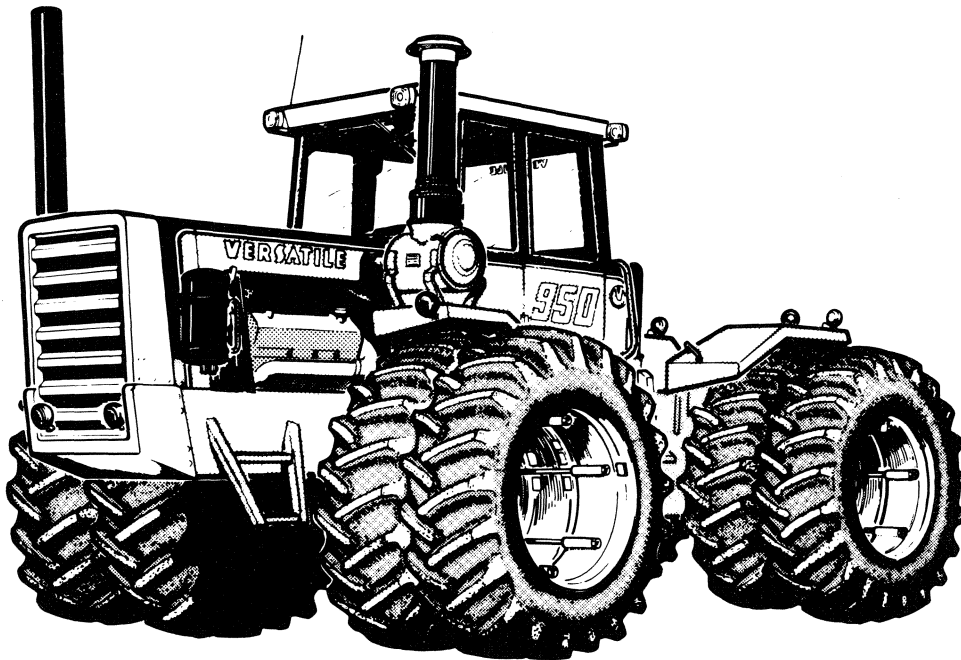


950

OPERATOR'S MANUAL



**V
E
R
S
A
T
I
L
E**

PU1031

42095011

Reprinted

1979

VERSATILE WARRANTY

VERSATILE MANUFACTURING CO. (VERSATILE) warrants each item of new Versatile equipment sold by it to be free from defects in material and workmanship under normal use and service. The sole obligation of Versatile to the Dealer under this warranty is limited to repairing or replacing, as Versatile may elect, any part or parts that prove in Versatile's judgment to be defective in material or workmanship within one year after delivery to the original purchaser, under normal farm use. Such a defective part or parts will be replaced or repaired ONLY TO THE ORIGINAL PURCHASER, such repair or replacement will be done at the location of the selling Versatile Dealer. Purchaser must give written notice to the Authorized Dealer from whom equipment was purchased of any claimed defect and the Dealer will have a reasonable time under the circumstances then existing to repair or replace said part or parts found to be defective. It is understood that if there is any delay in giving such written notice wherein it is possible that the alleged defective part may have caused damage or defects to other parts of the equipment, then this warranty shall not cover the repairs necessitated therein.

**NOTE: THE SOLE REMEDY OF THE PURCHASER
FOR BREACH OF THIS WARRANTY IS THE REPAIR
OR REPLACEMENT OF DEFECTIVE PARTS.**

This warranty does not extend to the engine or tires on Versatile tractors which are manufactured by others, and which carry separate warranties from said manufacturers. There are no representations, warranties, or conditions express or implied, statutory or otherwise, except those herein contained and no agreement collateral otherwise, except those herein contained and no agreement collateral hereto shall be binding upon either party unless in writing hereon or attached hereto, signed by purchaser and accepted by Versatile at its head office.

Versatile's liability under this warranty is limited to the repairing or replacing of parts, and Versatile shall in no event be liable to the Purchaser for consequential damages or loss of profits on crops sustained by it as a result of any defect in material or workmanship on any of the equipment covered by this warranty.

Versatile equipment is warranted for agricultural use only. This Warranty does not cover industrial application. ALTERING, MODIFYING OR ADDING ADDITIONAL EQUIPMENT WHICH IS NOT APPROVED FOR INSTALLATION ON VERSATILE EQUIPMENT BY THE COMPANY WILL VOID THE WARRANTY.

All Warranties are subject to the legislation of the state or province in which the machine is sold.

THERE WILL BE NO DEVIATION FROM THE PROCEDURE AS OUTLINED

NOTE: THERE ARE NO WARRANTIES, EXPRESS OR IMPLIED, INCLUDING WARRANTIES OF MERCHANTABILITY OR FITNESS FOR A PARTICULAR PURPOSE BY VERSATILE OR ITS AUTHORIZED DEALER, REGARDING VERSATILE EQUIPMENT EXCEPT THE WARRANTY AGAINST DEFECTS IN MATERIAL OR WORKMANSHIP EXPRESSED HEREIN. NO PERSON IS AUTHORIZED TO BIND VERSATILE FOR ANY OTHER WARRANTY WHATSOEVER.

DELIVERY SERVICE FOR VERSATILE FOUR WHEEL DRIVE TRACTORS

ATTENTION DEALERS! This form must be filled out and signed by both the dealer and customer at time of delivery and RETURN IMMEDIATELY to VERSATILE Manufacturing Ltd.

Delivered to _____ Dealer _____

R.R. No. _____ Box No. _____ R.R. No. _____ Box No. _____

Town _____ Town _____

State/Province _____ State/Province _____

Zip Code/Postal Code _____ Zip Code/Postal Code _____

Tractor Model No. _____ Tractor Serial No. _____

Frame Stamp No. _____ Engine Serial No. _____

I have thoroughly instructed the customer on the above equipment which review included the Operator's Manual content, equipment care, maintenance, adjustments and safe operation. The VERSATILE warranty and all cards have been filled out with the purchaser.

Date _____ Dealer's Signature _____

The above equipment and Operator's Manual have been received by me and I have been thoroughly instructed as to care, maintenance, adjustment, safe operation and VERSATILE warranty policy.

Date _____ Owner's Signature _____

----- FOLD BACK HERE AND ADD CARBON -----

DEALER'S COPY

DELIVERY SERVICE FOR VERSATILE FOUR WHEEL DRIVE TRACTORS

ATTENTION DEALERS! This form must be filled out and signed by both the dealer and customer at time of delivery and RETURN IMMEDIATELY to VERSATILE Manufacturing Ltd.

Delivered to _____ Dealer _____

R.R. No. _____ Box No. _____ R.R. No. _____ Box No. _____

Town _____ Town _____

State/Province _____ State/Province _____

Zip Code/Postal Code _____ Zip Code/Postal Code _____

Tractor Model No. _____ Tractor Serial No. _____

Frame Stamp No. _____ Engine Serial No. _____

I have thoroughly instructed the customer on the above equipment which review included the Operator's Manual content, equipment care, maintenance, adjustments and safe operation. The VERSATILE warranty and all cards have been filled out with the purchaser.

Date _____ Dealer's Signature _____

The above equipment and Operator's Manual have been received by me and I have been thoroughly instructed as to care, maintenance, adjustment, safe operation and VERSATILE warranty policy.

Date _____ Owner's Signature _____

OWNER'S COPY

E FIRST

CUT ALONG T

DELIVERY SERVICE FOR VERSATILE FOUR WHEEL DRIVE TRACTORS

ATTENTION DEALERS! This form must be filled out and signed by both the dealer and customer at time of delivery and RETURN IMMEDIATELY to VERSATILE Manufacturing Ltd.

Delivered to _____ Dealer _____

R.R. No. _____ Box No. _____ R.R. No. _____ Box No. _____

Town _____ Town _____

State/Province _____ State/Province _____

Zip Code/Postal Code _____ Zip Code/Postal Code _____

Tractor Model No. _____ Tractor Serial No. _____

Frame Stamp No. _____ Engine Serial No. _____

I have thoroughly instructed the customer on the above equipment which review included the Operator's Manual content, equipment care, maintenance, adjustments and safe operation. The VERSATILE warranty and all cards have been filled out with the purchaser.

Date _____ Dealer's Signature _____

The above equipment and Operator's Manual have been received by me and I have been thoroughly instructed as to care, maintenance, adjustment, safe operation and VERSATILE warranty policy.

Date _____ Owner's Signature _____

VERSATILE COPY

INTRODUCTION



We at VERSATILE Manufacturing Co. are pleased that you have chosen a VERSATILE Four-Wheel Drive Tractor for your farming operation. The founders of VERSATILE pioneered the development of the four-wheel drive tractor. It has evolved through ideas and suggestions submitted to us by customers such as yourself.

We ask that you study this manual and adopt the preventative maintenance program outlined in it. Good preventative maintenance should provide trouble free service for years. The suggested schedule has been designed to meet most operating conditions. It may be necessary to adjust your maintenance program to suit your specific operating conditions and to perform the maintenance more often than outlined.

As the purchaser of a VERSATILE Four-Wheel Drive Tractor you have also received a Cummins' Operation and Maintenance Manual. We would ask that for maintenance on the engine, which is not covered by our tractor manual, you follow the instructions in the Cummins' manual. Before placing the tractor in service become familiar with all the procedures described in both the engine manual and the tractor manual.

Review with all operators on at least a yearly basis, the proper and safe way to operate and maintain the tractor. All operators should know the tractor completely before operating it.

Your dealer is factory-trained to provide you with genuine parts and professional repair service. Consult him regarding your service needs. He is working for you.

SERIAL NUMBER LOCATION

IMPORTANT:

When ordering parts, state the serial number of the tractor and/or engine. The tractor serial number is stamped on the rear of the front frame section and on a metal tag on lower left hand side of the doorpost. The engine (Cummins) serial number is on a metal tag on engine's left cylinder bank.

Write your model and serial number information here:

ENGINE

MAKE

CUMMINS

MODEL

VT-903

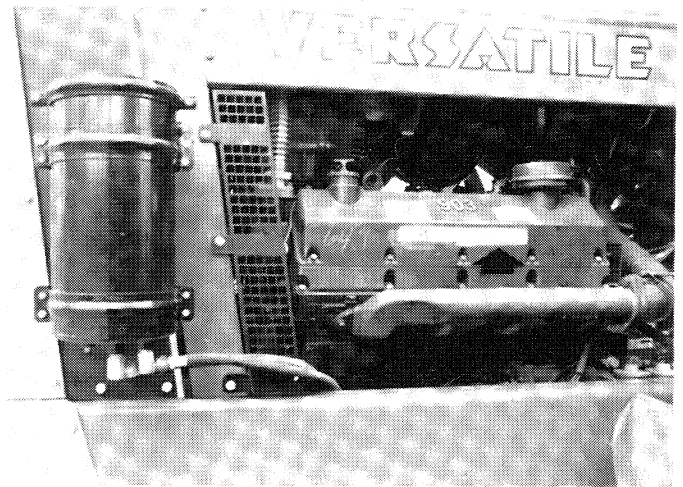
SERIAL _____

TRACTOR

MODEL

950

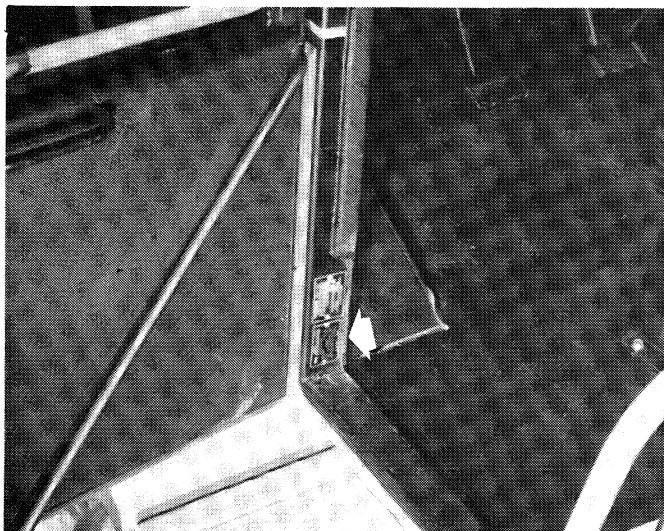
SERIAL _____



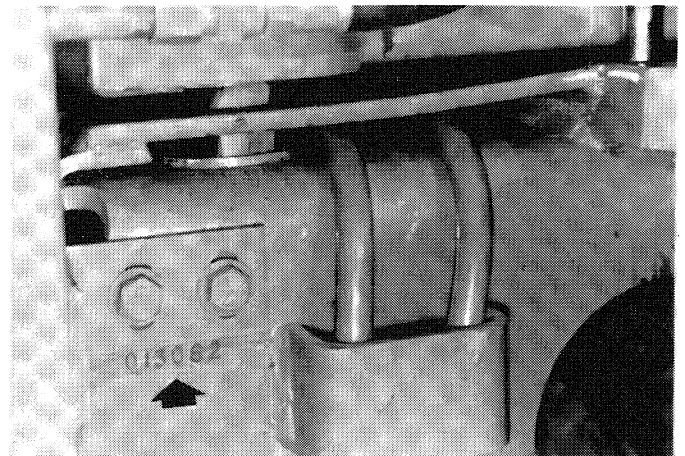
Engine Plate

FRAME

SERIAL _____



Tractor Plate



Frame Stamp

TABLE OF CONTENTS

SECTION	PAGE	SECTION	PAGE
Specifications	6	Fuels and Fluids	35
Tractor Safety	10	Fuels	35
Safety Rules	10	Fluids	35
Emergency Exit	12	coolant	35
Safety Decal Location	13	adding coolant	35
Controls and Instruments	14	replacing coolant	35
Operation	23	specifications	35
Engine break-in	23	dry chemical additive (DCA)	35
Prestarting Inspection	23	liquid ballast	36
Engine Starting	23	hydraulic fluid	36
Cold Weather Starting	24	brake fluid	36
Clutch Operation	24	Lubricant Chart	37
Shifting Gears	24	Routine Service and Lubrication	38
Decelerator Operation	25	Break-in Period	38
Stopping Tractor	25	Periodic Servicing	38
Power Take-Off (PTO)	25	Recommended Service intervals	40
Drawbar	26	A: Air Cleaner	41
Fuel System	26	outer element	41
priming fuel system	26	inner element	41
fuel tanks	26	tube connections	41
fuel storage	27	B: Air Conditioner	41
Tire Inflation	27	C: Belts	42
Tire Ballast	27	alignment	42
checking wheel slippage	28	tension	42
Hydraulic System - Implement and steering	28	alternator and compressor	43
flow control valve	29	fan drive belt	43
Air Conditioned Cab	29	belt removal and installation	43
cab pressurizer (fan)	29	- alternator and/or compressor	43
temperature control	29	- fan belt	43
selecting the inside-outside air mix	30	D: Brake	44
dehumidifying the cab air	30	E: Cab Air Intake Filter Elements	44
purging stale air	30	F: Electrical System	45
hot and cold weather	30	electrolyte level	45
Light System	30	cleaning batteries	45
Three-Point Hitch (optional)	31	alternator	46
depth limit control valve	31	G: Engine Cooling System	46
adjusting implement lowering rate	32	DCA filter	46
three-point hitch adjustment	32	H: Engine Oil And Filters	47
- valve linkage adjustment	32	full-flow filters	47
- depth control lever adjustment	32	by-pass filter	47
Towing	33	I: Ether Starting Aid	49
Turning	34	cleaning the atomizer	49
		lubricating the control cable	49

SECTION	PAGE	SECTION	PAGE
J: Fuel System Maintenance	49	Storage and Preparation	64
K: Grill and Radiators	50	Preparation	64
L: Lubrication	51	Storing	64
lube points	51	Storing batteries	64
lube schedule	52	Removal from storage	64
M: Steering And Implement Hydraulics	54	Initial engine startup	65
N: Transmission Circuit And PTO Circuit	54	Electrical System	66
transmission circuit	54	Fuses and circuit breaker	66
PTO circuit	55	Wiring diagram code	67
O: Visual Inspection	55	Wiring schematics - starter, lights and	
P: Wheels, Tires And Axle-Mounting Bolts	56	accessory circuit	68
single wheels	56	- cab console circuit	69
dual wheels	56	- cab ceiling circuit	70
axle-mounting bolts	58	- cab and rear work light circuit	71
tire care	58	System Schematics	72
Q: Decelerator Adjustment	58	Transmission lubrication	72
Troubleshooting	60	Air Conditioning and heater	72
Steering and Implement Control	60	Steering and implement circuit	73
Cab Comfort System	62	Three-point hitch	73
Engine	63	PTO	74

Thank you so much for reading.
Please click the “Buy Now!”
button below to download the
complete manual.



After you pay.

You can download the most
perfect and complete manual in
the world immediately.

Our support email:

ebooklibonline@outlook.com