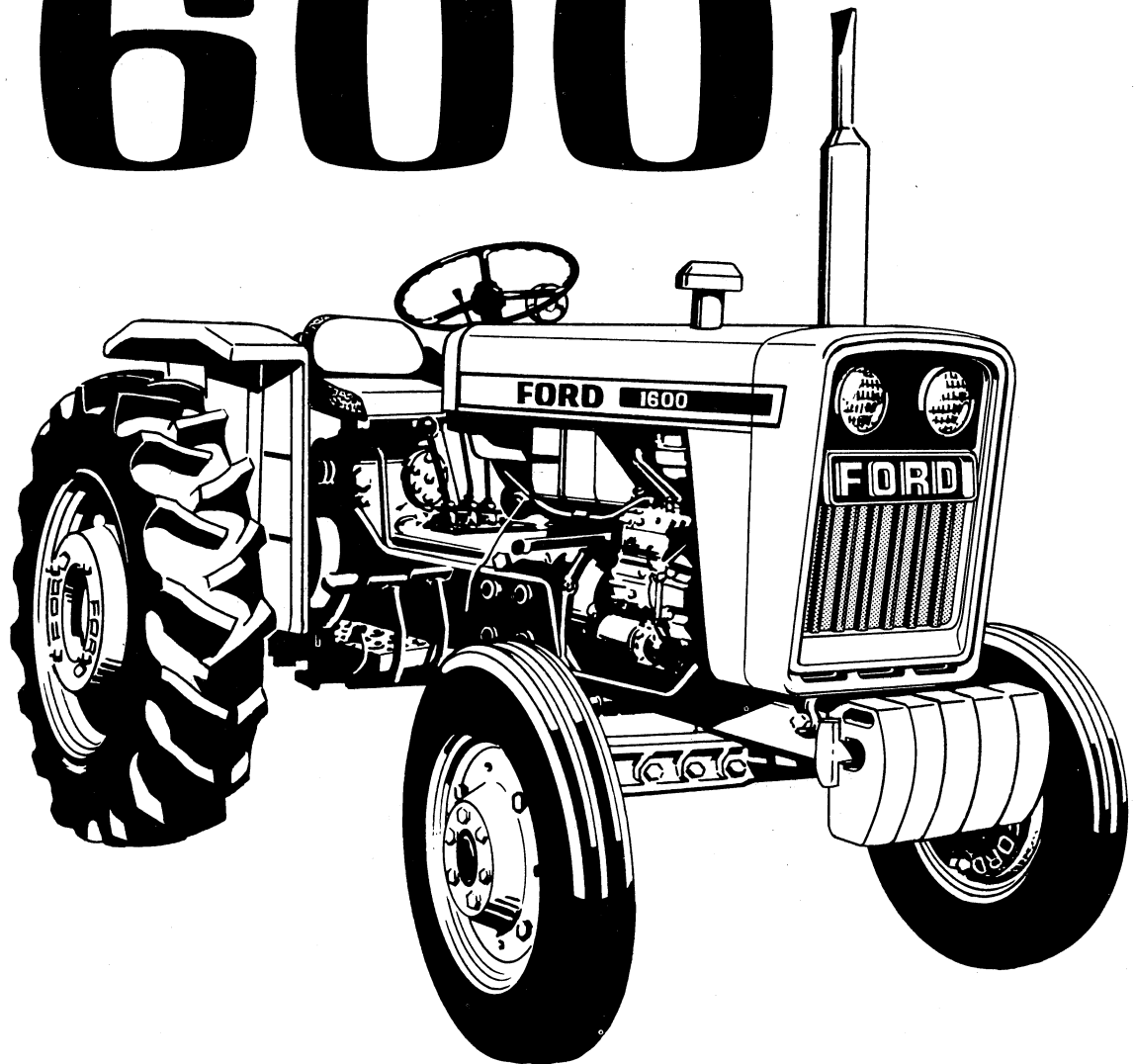


---

# FORD

---

# 1600



42160011

---

## OPERATOR'S MANUAL

---

Reprinted

# foreword

This manual has been prepared to assist you in the proper break-in, daily care, and operation of your new Ford Tractor. It contains specific information on the many built-in features of the tractor, safety precautions and instructions for making minor adjustments.

Your tractor has been carefully inspected before leaving the factory and also by your Ford Tractor-Equipment Dealer, prior to delivery, to see that it is "ready to go." To keep it in this "ready to go" condition, it is important to follow regularly scheduled service periods as recommended in this manual.

Read this manual carefully before operating your tractor, and keep it in a convenient location for later reference. If, at any time, you have a service problem concerning your new tractor, remember that your Ford Tractor-Equipment Dealer has factory-trained service personnel, Genuine Ford Parts, and the necessary tools and equipment to best satisfy your service needs.

FORD TRACTOR OPERATIONS

FORD MOTOR COMPANY

ISSUED TO:

ISSUED BY:

---

Owner's Name

---

Ford Tractor-Equipment Dealer

---

Mailing Address

---

City

---

City

---

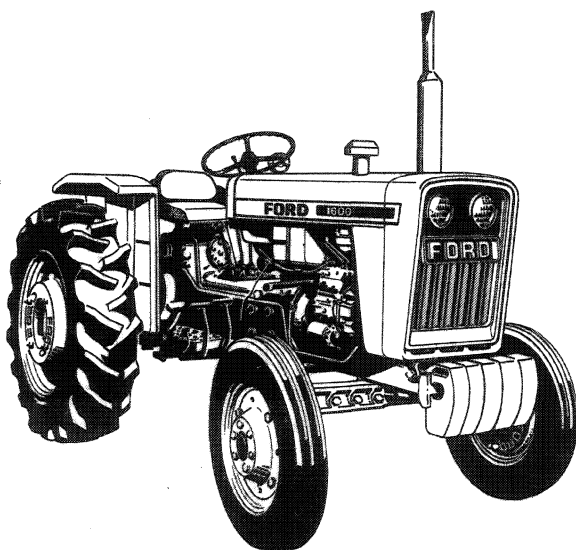
State

---

State

---

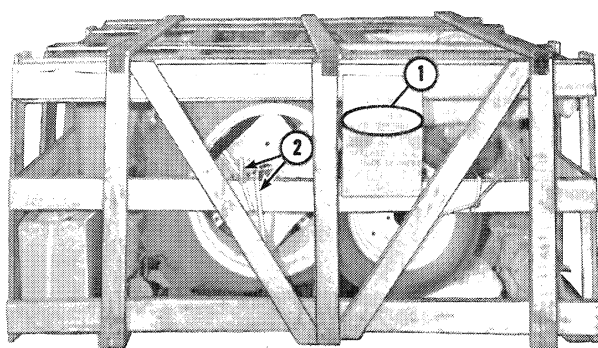
Delivery Date



# FORD

## 1600

### ASSEMBLY MANUAL



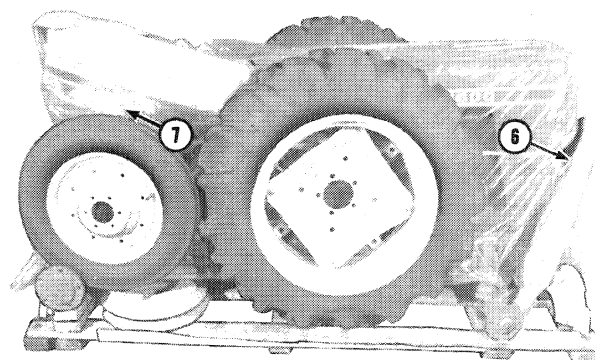
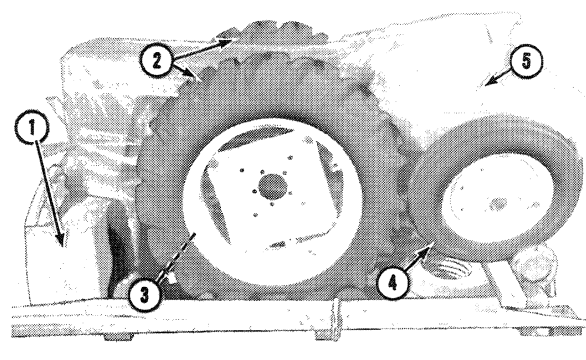
**Figure 1**  
**Crated Ford 1600**

1. Serial Number      2. Packing Bands

## Assembly Instructions

The Ford 1600 Tractor is shipped partially disassembled in a crate. This manual provides the information needed to uncrate and assemble the Ford 1600 Tractor.

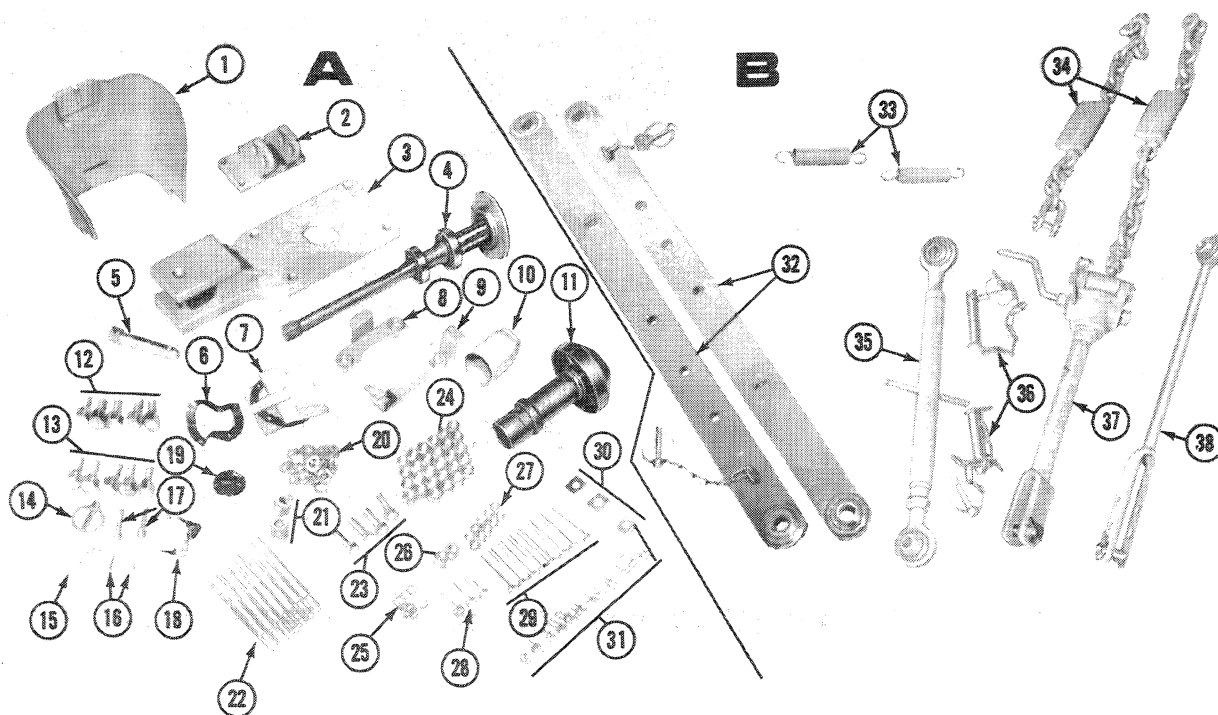
Cut all the packing bands, Figure 1, and remove the top and sides of the crate.



**Figure 2**  
**Ford 1600 On Crate Base**

- |                 |                 |                   |
|-----------------|-----------------|-------------------|
| 1. Hardware Box | 4. Front Wheels | 7. Steering Wheel |
| 2. Rear Wheels  | 5. Fenders      |                   |
| 3. Hardware Box | 6. Muffler      |                   |

Remove the loose parts from the crate base.



**Figure 3**  
**Contents of Hardware Boxes**

**A. Box (1), Figure 2**

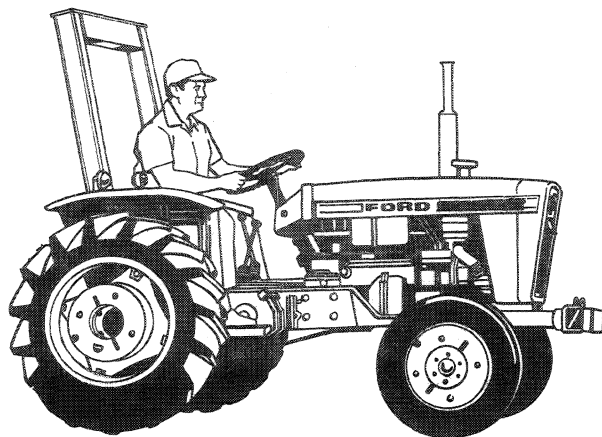
1. PTO Shield - 378100010
2. Upper Link Bracket - 370300030
3. Hitch - 370650021
4. PTO Assembly
5. Hitch Pin - 370910080
6. PTO Gasket - Used - Discard
7. PTO Gasket - New - 322990050
8. Bracket - PTO Top - 378100030
9. Bracket - PTO Bottom - 378100020
10. PTO Cap - 378110020
11. Inlet Cap - 314530311
12. Wheel Bolt - LH Thread
13. Wheel Bolt - RH Thread
14. Lynch Pin for 5 above - 2N-608

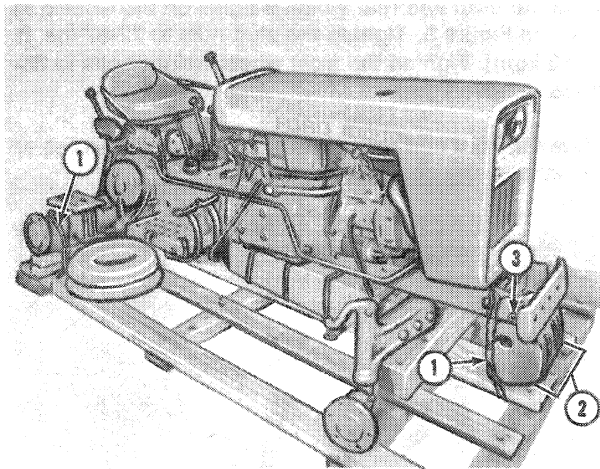
15. Spring Pin
16. Cotter Pins
17. Pins, Lower Link
18. Keys
19. Steering Wheel Cap
20. Lock Washers - 5/8"
21. Flat Washers - 5/8"
22. Rear Wheel Weight Studs
23. Hitch Bolts - M16x45
24. Nuts - M16 - 020100016
25. Lock Washers - 1/2"
26. Flat Washers - 1/2"
27. Nuts - M12
28. Bolts M12x45 - 010101245
29. Bolts M12x70 - 010101270

30. Front Weight Spacer - 399210280
31. Front Wheel Bolts and Lock Washers

**B. Box (3), Figure 2**

32. Lower Links
33. Link Springs
34. Stabilizer Chains
35. Upper Link
36. Upper Link Pins
37. Right Lift Rod
38. Left Lift Rod

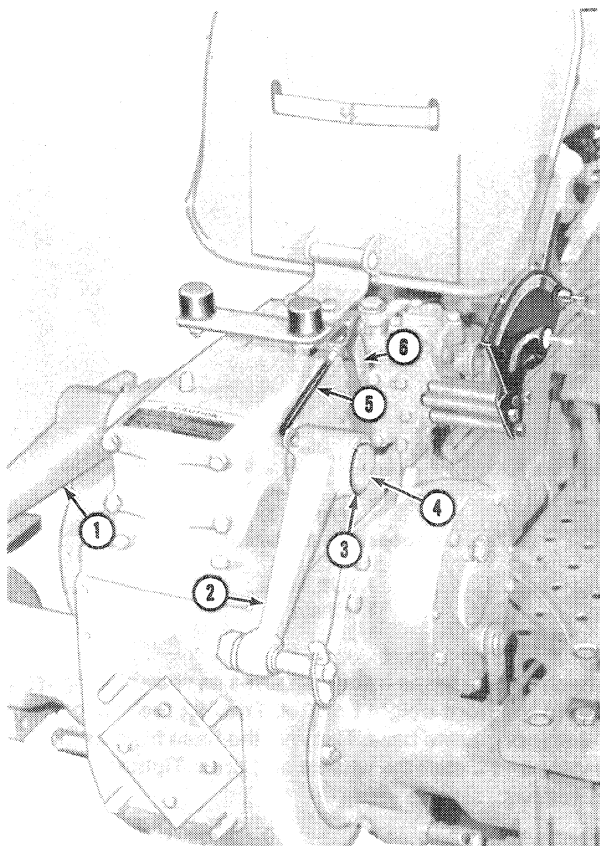




**Figure 4**  
**Crate Wires and Front Weights**

- |                  |                      |
|------------------|----------------------|
| 1. Crate Wires   | 3. Front Weight Bolt |
| 2. Front Weights |                      |

Remove the crate wires, Figure 4. Then remove the front weight bolt and the front weights from the tractor.



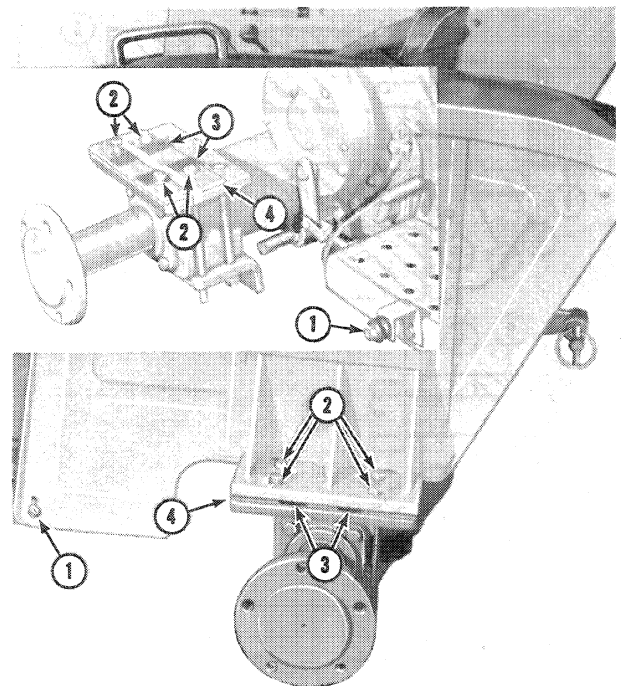
**Figure 5**  
**Lift Arm Positioning**

- |                   |                          |
|-------------------|--------------------------|
| 1. Left Lift Arm  | 4. Rockshaft             |
| 2. Right Lift Arm | 5. Position Control Link |
| 3. Snap Rings     | 6. Valve Lever           |

**NOTE:** The rockshaft (4), Figure 5, is held in position by the left lift arm snap ring. Follow the procedure below to avoid repairs due to allowing the rockshaft to slide out of position to the right.

The lift arms are positioned for shipping and must be repositioned for hydraulic lift operation. Reposition the lift arms as follows:

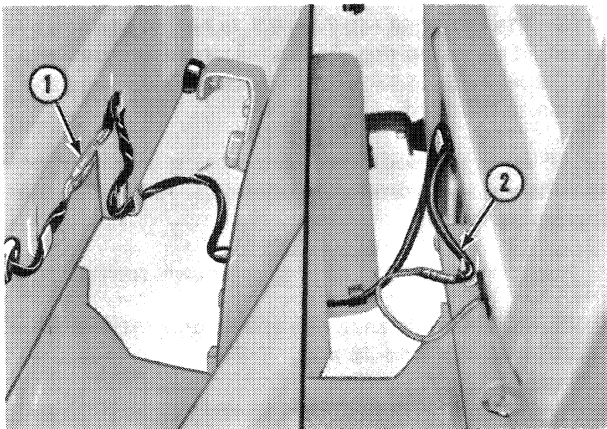
1. Push the lift control lever to the down position.
2. Remove the right snap ring and lift arm; then remove the left snap ring and lift arm.
3. Rotate the rockshaft to the fully lowered position and hold it there.
4. Install the right lift arm in the first spline below horizontal or so that the yellow paint marks are aligned. Install the right snap ring.
5. Hold the rockshaft in position and install the left arm in the same position as the right lift arm. Install the left snap ring.
6. Connect the position control link to the valve lever.



**Figure 6**  
**Fender Installation**

- |                          |                   |
|--------------------------|-------------------|
| 1. Front Vibration Mount | 3. Vibration Pads |
| 2. Attaching Bolts       | 4. Spacer         |

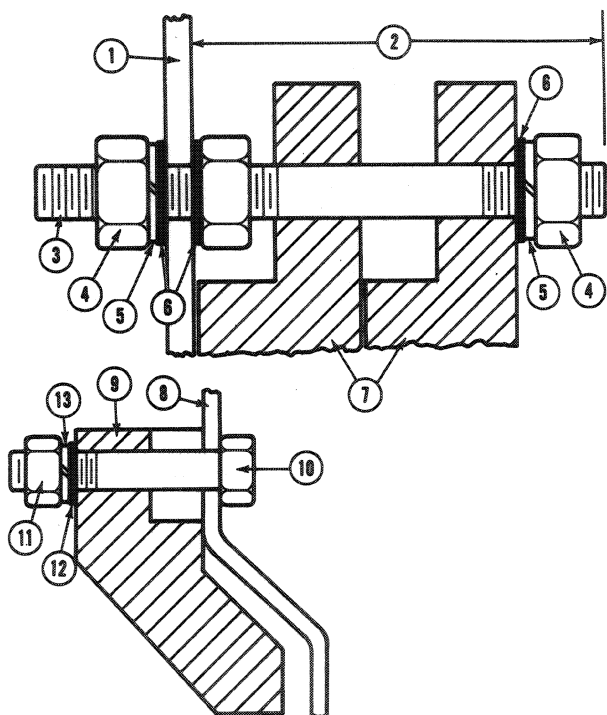
Install the fenders as shown. Remove the tape securing the vibration pads.



**Figure 7**  
**Tail and Flasher Warning Light Wires**

1. Left Fender Wires
2. Right Fender Wire

Connect the tail and flasher warning light wires. Match the wire color codes when connecting the left fender wires.



**Figure 8**  
**Wheel Weight Installation**

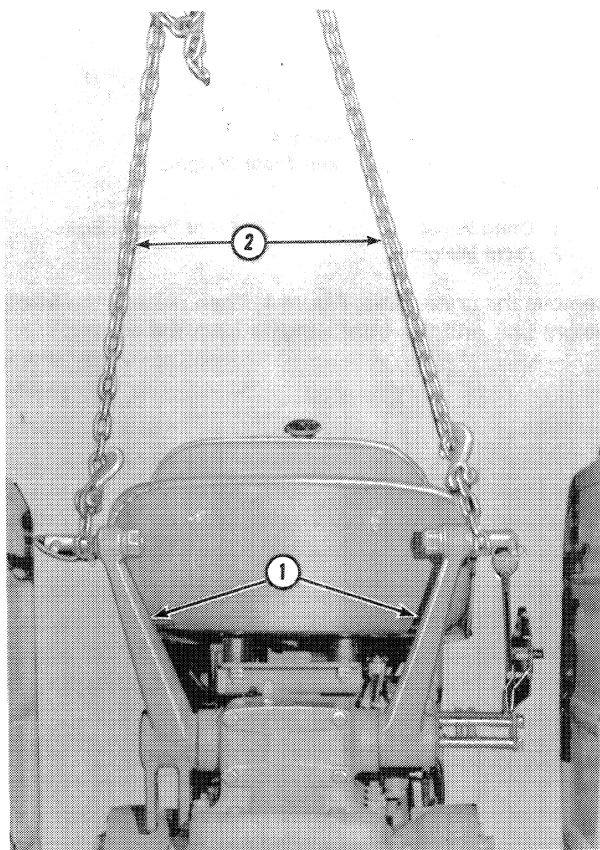
- |  |                        |
|--|------------------------|
| 1. Rear Wheel Disc   | 7. Rear Wheel Weights  |
| 2. Stud Installation Dimension<br>5-1/16-5-3/16"(128.5-131.5 mm) | 8. Front Wheel Disc    |
| 3. Stud  | 9. Front Wheel Weight  |
| 4. Nuts - M16  | 10. Bolt - M12x70      |
| 5. Lock Washers - 5/8"   | 11. Nut - M12          |
| 6. Flat Washers - 5/8"   | 12. Flat Washer - 1/2" |
|  | 13. Lock Washer - 1/2" |

Install the front and rear wheel weights on the wheels as shown in Figure 8. Tighten the stud nuts to 72-87 lbs. ft. (10-12 kgm). Tighten the front wheel weight bolts to 36-43 lbs. ft. (5-6 kgm).

Inflate the front and rear tires to the proper pressures as indicated in the operator's manual.



**CAUTION:** Do not inflate rear tires above 35 psi (24.6 Kg/cm )



**Figure 9**  
**Tractor Supported for Wheel Installation**

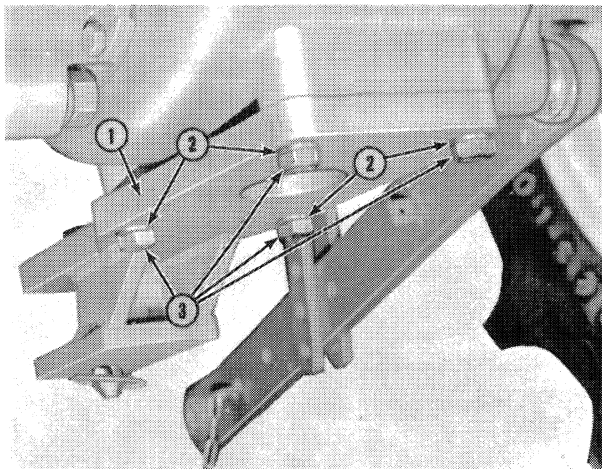
1. Lift Arms
2. Chain

Attach chains to the tractor lift arms as shown in Figure 9 and to the front weight bracket. Then lift the tractor from the shipping crate base. Remove the base from under the tractor and install the wheels and tires. Tighten the bolts as follows:

- |                           |                             |
|---------------------------|-----------------------------|
| Front wheel bolts         | 40-45 lbs. ft.(5.5-6.2 kgm) |
| Rear wheel disc-hub bolts | 123-137 lbs. ft.(17-19 kgm) |
| Rear wheel disc-rim bolts | 180-217 lbs. ft.(25-30 kgm) |



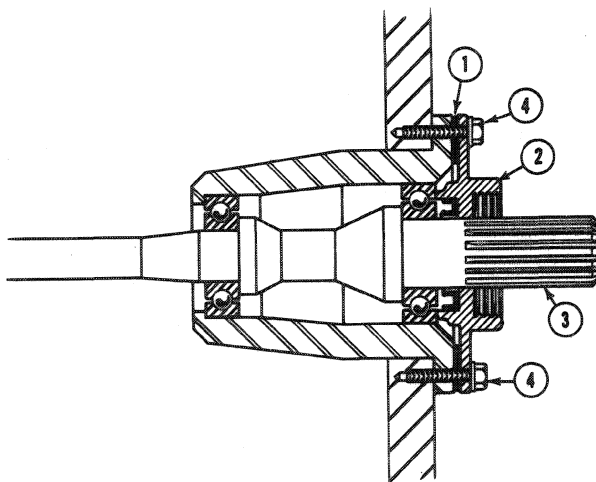
**CAUTION:** Install the wheels & tires and securely support the tractor before working beneath the tractor.



**Figure 10**  
**Hitch**

- |                        |                   |
|------------------------|-------------------|
| 1. Hitch               | 3. Bolts - M16x45 |
| 2. Lock Washers - 5/8" |                   |

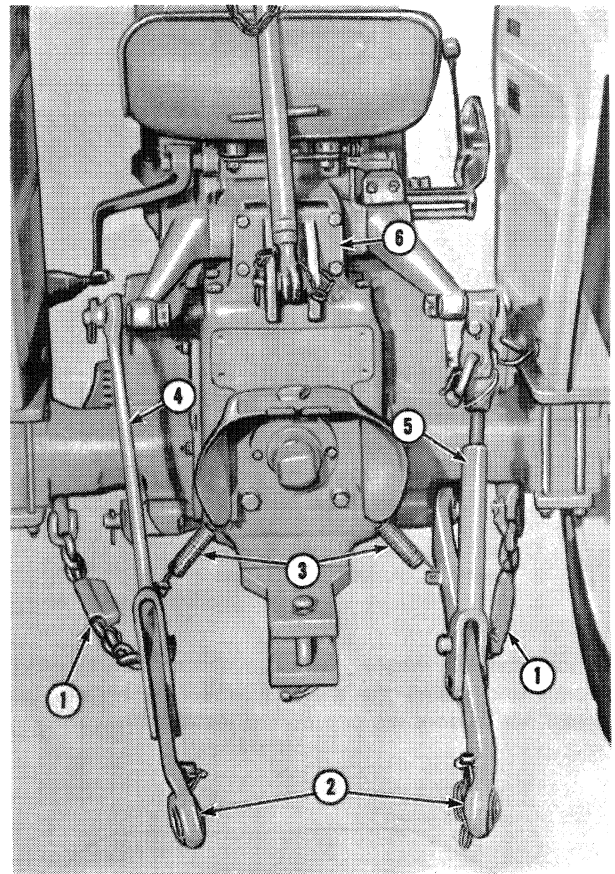
Install the hitch as shown.



**Figure 11**  
**PTO Installation**

- |           |                       |
|-----------|-----------------------|
| 1. Gasket | 3. PTO Shaft Assembly |
| 2. Cover  | 4. Retaining Bolts    |

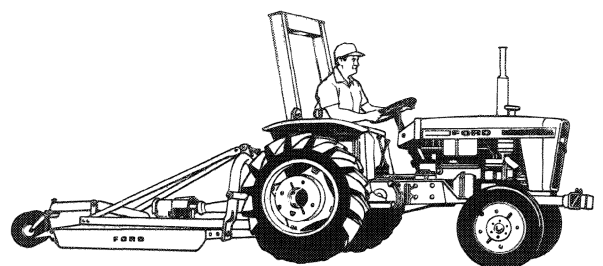
Remove the shipping cover and position the gasket on the center housing. Then slide the PTO assembly into position and tighten the retaining bolts. Install the upper and lower shield supports.



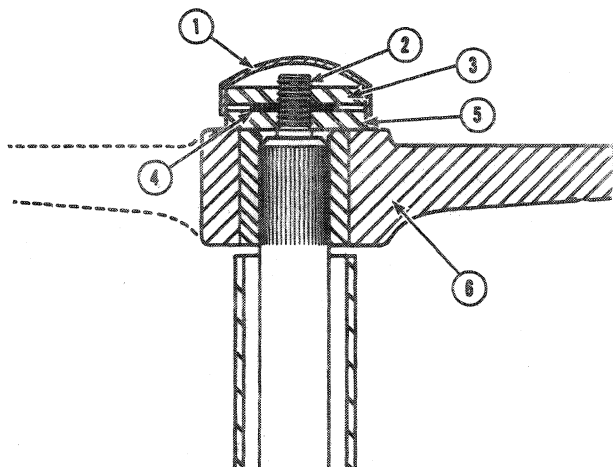
**Figure 12**  
**Lift Linkage Installation**

- |                       |                       |
|-----------------------|-----------------------|
| 1. Check Chains       | 4. Left Lift Rod      |
| 2. Lower Links        | 5. Right Lift Rod     |
| 3. Lower Link Springs | 6. Upper Link Bracket |

Install the lift linkage components as shown.



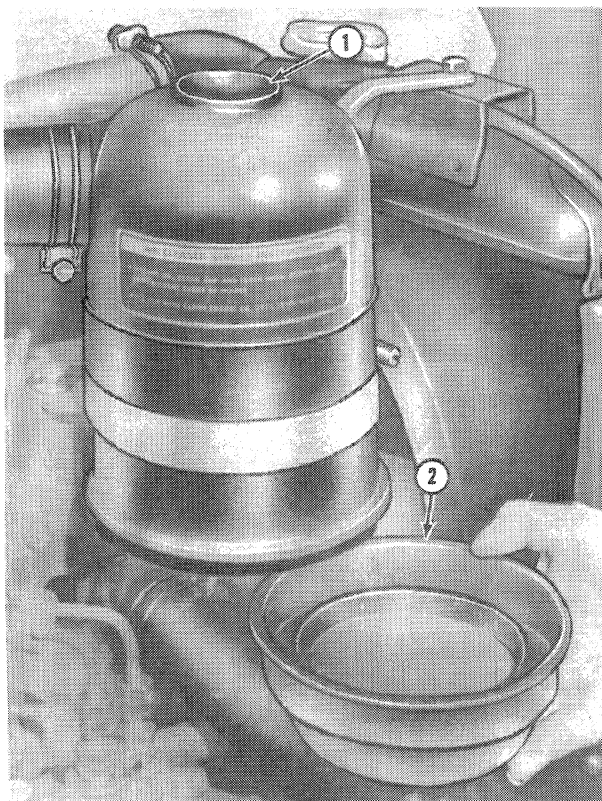




**Figure 13**  
**Steering Wheel Installation**

- |                    |                   |
|--------------------|-------------------|
| 1. Cap             | 4. Washer         |
| 2. Steering Column | 5. Spacer         |
| 3. Nut             | 6. Steering Wheel |

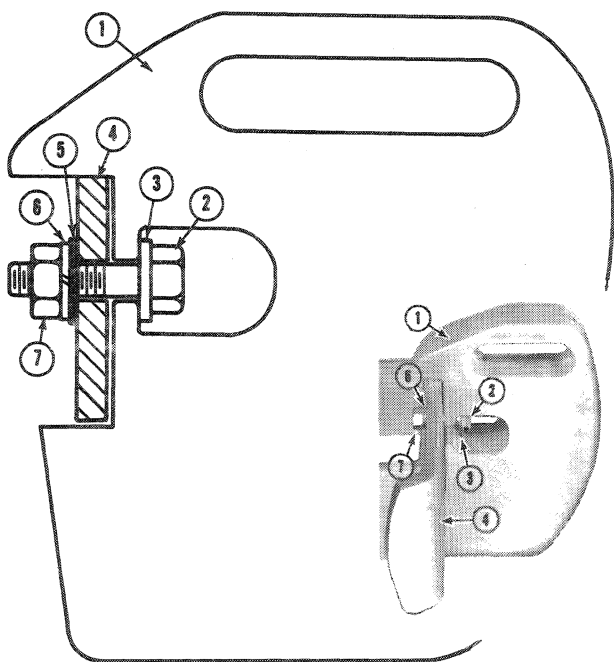
Remove the nut, washer, and spacer from the steering column and install the steering wheel as shown. Be careful not to dent the cap during installation.



**Figure 15**  
**Engine Air Cleaner**

- |          |         |
|----------|---------|
| 1. Inlet | 2. Bowl |
|----------|---------|

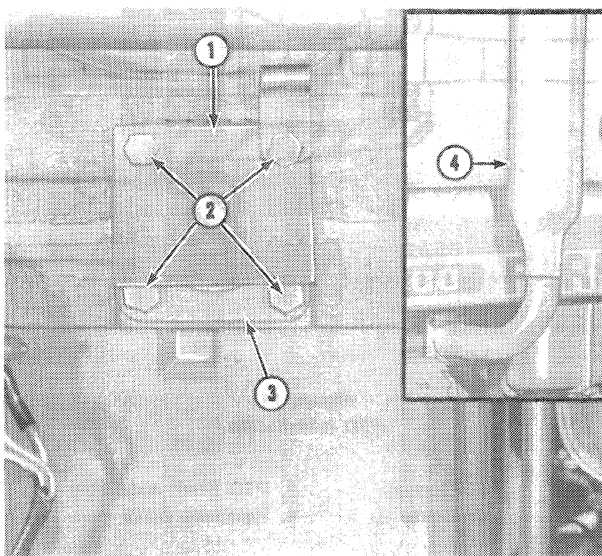
Remove the tape from the air cleaner inlet and fill the bowl with engine oil to the full mark.



**Figure 14**  
**Front Counterweight Installation**

- |                   |                       |
|-------------------|-----------------------|
| 1. Front Weight   | 5. Flat Washer - 1/2" |
| 2. Bolt - M12x45  | 6. Lock Washer - 1/2" |
| 3. Spacer         | 7. Nut - M12          |
| 4. Weight Bracket |                       |

Install the front weights

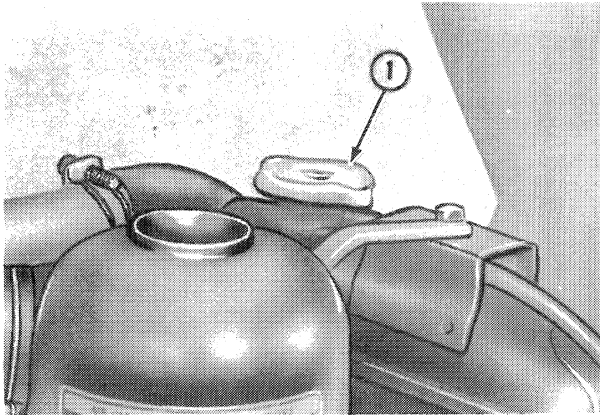


**Figure 16**  
**Muffler Installation**

- |          |                  |           |            |
|----------|------------------|-----------|------------|
| 1. Cover | 2. Muffler Bolts | 3. Gasket | 4. Muffler |
|----------|------------------|-----------|------------|

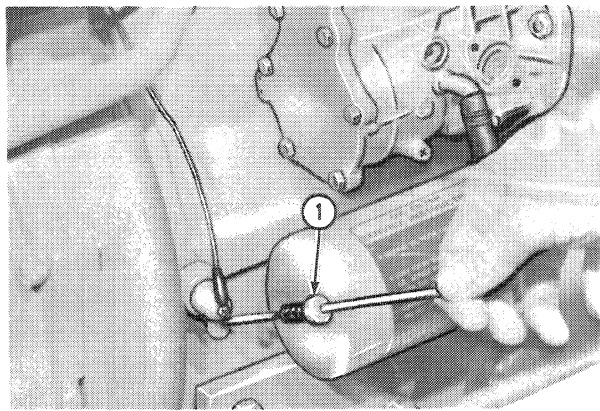


Remove the exhaust cover. Then check the muffler gasket and install the muffler.



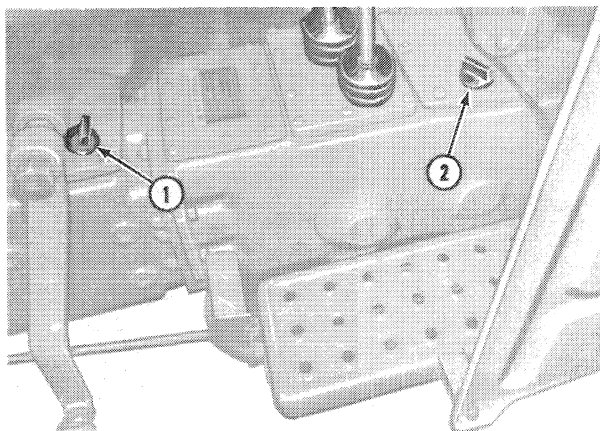
**Figure 17**  
**Engine Coolant Level**

1. Radiator Cap



**Figure 18**  
**Engine Oil Level**

1. Dipstick



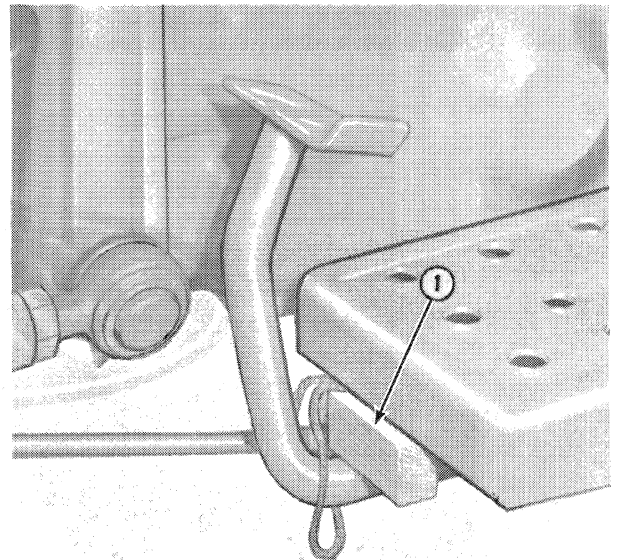
**Figure 19**  
**Hydraulic & Transmission/Rear Axle Oil Level**

1. Hydraulic Filler/Dipstick  
2. Transmission/Rear Axle Filler/Dipstick

Check all fluid levels and add coolant and oil of the type required as needed.

**NOTE:** The tractor is shipped with no oil in the air cleaner or transmission/rear axle.

Start the tractor and check all systems for proper operation. If the hydraulic lift will not neutralize the position control link (5), Figure 5, must be lengthened until the system will neutralize. The system neutralizes when the pressure drops in the lift circuit when the lift arms stop moving up.



**Figure 20**  
**Clutch Pedal Block**

1. Block

Place the block between the clutch and floorboard, Figure 20 to prevent clutch sticking during storage.

Thank you so much for reading.  
Please click the “Buy Now!”  
button below to download the  
complete manual.



After you pay.

You can download the most  
perfect and complete manual in  
the world immediately.

Our support email:

[ebooklibonline@outlook.com](mailto:ebooklibonline@outlook.com)