

Tractors

5640

6640

7740

7840

8240

8340

SL and SLE Range

Serial #017221B and above



OPERATOR'S MANUAL



NEW HOLLAND

TO THE OWNER:

The warranty coverage that is extended to your tractor is explained in the Warranty and Limitation of Liability form. Your dealer will provide you with a copy of the warranty and retain a copy which you have signed. After you read the warranty, ask your dealer to explain any points that you may not understand.

This tractor was designed to power and propel itself. It is intended for use in normal and customary agricultural applications.

Do not modify or alter or permit anyone else to modify or alter this tractor or any of its components or any tractor function without first consulting an authorized New Holland dealer. If you have any questions regarding tractor modifications, contact New Holland North America, Inc., 500 Diller Ave., New Holland, PA 17557.

A Roll Over Protection Structure (ROPS) or a safety cab incorporating a Roll Over Protection Structure (ROPS) and a seat belt were standard equipment for the tractor at the time of factory assembly. If the ROPS/Safety Cab has been modified or removed by the original purchaser, it is recommended that you equip your tractor with a ROPS/Safety Cab and seat belt. A ROPS/Safety Cab is effective in reducing injuries during tractor overturn accidents. Overturning a tractor without a ROPS can result in serious injury or death. ROPS/Safety Cab and seat belts are available for your tractor. If your tractor is not equipped with a ROPS/Safety Cab and seat belt, see your New Holland dealer.

Your safety and the safety of those around you depends upon the care and good judgment you use while operating this equipment. Read the safety precautions carefully.

After you have operated the tractor for 50 hours, take your tractor and this manual to your selling dealer. He will perform the factory recommended 50-hour service. You will be responsible for the cost of lubricants, fluids, filters and other items replaced as part of normal maintenance. Prior to taking the tractor to your selling dealer for service, it is recommended that you contact them to determine any other charges for which you may be responsible.

All data given in this book is subject to production variations. Dimensions and weights are approximate only and the illustrations do not necessarily show tractors in standard condition. For exact information about any particular tractor please consult your New Holland dealer.



CAUTION: THIS SYMBOL IS USED THROUGHOUT THIS BOOK WHENEVER PERSONAL SAFETY IS INVOLVED. TAKE TIME TO READ AND FOLLOW THE INSTRUCTIONS. BE CAREFUL!

CAUTION: PICTURES IN THIS MANUAL MAY SHOW PROTECTIVE SHIELDING OPEN OR REMOVED TO BETTER ILLUSTRATE A PARTICULAR FEATURE OR ADJUSTMENT.

BE CERTAIN, HOWEVER, TO CLOSE OR REPLACE ALL SHIELDING BEFORE OPERATING THE MACHINE.

IMPROVEMENTS

New Holland North America, Inc. is continually striving to improve its products. We reserve the right to make improvements or changes when it becomes practical and possible to do so, without incurring any obligation to make changes or additions to the equipment sold previously.



WARRANTY AND LIMITATION OF LIABILITY - AGRICULTURAL PRODUCTS

COVERAGE PROVIDED

New Holland North America, Inc. or New Holland Canada, Ltd., hereinafter called "Company" warrants to the retail purchaser of each new Product (as listed below) that the Selling Dealer will repair or replace any part thereof found to be defective in materials or workmanship within the following periods. This warranty is for the benefit of the original or subsequent purchaser when purchased from an authorized New Holland dealer.

BASIC WARRANTY

Table with 2 columns: Product and Warranty Period (whichever comes first). Rows include Harvesting, Materials Handling Equipment and Implements (12 Months), Tractors 1000 thru 8000 Series (12 Months), Tractors 8030 and 8070 Series (36 Months or 3000 Hours), and Replacement Parts (90 days or to end of Basic Warranty).

*Allison transmissions, Caterpillar, Cummins and Deutz engines are warranted by their respective manufacturers.

**The components covered by extended warranty consists of the following:

ENGINE - The rocker arm cover, cylinder head, engine block, crankcase pan and timing gear cover of the engine, and the parts fully enclosed within these units.

TRANSMISSION AND REAR AXLE (Tractors Only) - The clutch housing, transmission case, dual power housing, differential housing, final drive housings, transfer case, front wheel drive housing, and parts fully enclosed within these housings, including the drive axles. Includes PTO clutch and PTO drop box, hydrostatic pump/motor and high pressure hoses on the Model 9030 tractors.

LIMITATIONS, INCLUDING DISCLAIMER OF IMPLIED WARRANTIES AND CONSEQUENTIAL DAMAGES

This warranty gives you specific legal rights and you may also have other rights which vary, depending on state or provincial laws.

New Holland North America, Inc. or New Holland Canada, Ltd. does not authorize any person or dealer to create for it any other obligation or liability in connection with these products. TO THE EXTENT ALLOWED BY LAW, ANY IMPLIED WARRANTY OF MERCHANTABILITY OR FITNESS APPLICABLE TO THIS PRODUCT IS LIMITED TO THE STATED DURATION OF THIS WRITTEN WARRANTY. NEITHER COMPANY NOR THE SELLING DEALER SHALL BE LIABLE FOR LOSS OF THE USE OF THE PRODUCT, LOSS OF TIME, INCONVENIENCE, COMMERCIAL LOSS OR CONSEQUENTIAL DAMAGES.

Some states and provinces do not allow limitations on how long an implied warranty will last or the exclusion or limitation of incidental or consequential damages, so the above limitations or exclusions may not apply to you.

The remedy of repair or replacement of a defective part during the warranty period herein specified shall be the purchaser's exclusive remedy.

EXTENDED SERVICE PLAN (ESP)

When offered by the Company, the option to purchase an Extended Service Plan has been explained and:

- I accept and have signed the completed registration form
I decline the Extended Service Plan
I will consider within 180 days (12 months on 8070 series)

PROTECTIVE EQUIPMENT

Rollover protective structure (ROPS) and seat belts are provided as standard equipment on all New Holland agricultural tractors and we strongly recommend their use. Customers who elect to remove or not use this protection do so at their own risk.

- I acknowledge the existence of OSHA regulations pertaining to ROPS.
A PTO master shield, if applicable, has been installed on the machine.
The correct Operator's Manual has been furnished.
Safety precautions were explained to me by the Selling Dealer.

ACKNOWLEDGEMENT/WARRANTY TRANSFER

The blank spaces under "Protective Equipment" have been filled in and are correct, and I acknowledge that I have read and I accept this Warranty and Limitation of Liability.

Form with fields for Purchaser and Dealer information: Name, Address, City, State, Zip, Model, Serial No., Attachment Model, SN, Retail Date, and Signature/Date.

New Holland Warranty Detail

The warranty period will begin on date of original retail sale or date of original use, whichever is earlier.

- The obligation of Company to the purchaser under this warranty is limited to the repair or replacement of defective parts by an authorized New Holland dealer and will be done free of charge for both parts and labor using genuine New Holland replacement parts. Repair or replacement in accordance with this warranty shall constitute fulfillment of all liabilities of Company and the Selling Dealer in respect to such Products.
- Repairs or replacements will be performed by the Selling Dealer, following delivery of the Product by the purchaser to the Dealer's place of business. When the purchaser has moved a long distance from the Selling Dealer, or the Selling Dealer is no longer in business, any New Holland dealer authorized to sell and service the described Products may perform the repair at its dealership.
- The Selling Dealer shall review these warranty provisions with the purchaser prior to retail sale, secure his acknowledgement of delivery of this warranty and record the date of original retail sale or date of original use.
- To obtain warranty service, the purchaser must (1) report the product defect to an authorized New Holland dealer and request repair within the applicable warranty term and (2) present evidence of the warranty start date.

WHAT IS NOT COVERED BY THE WARRANTY?

This warranty shall NOT apply under the following conditions:

- (i) With respect to vendor warranty items such as Allison transmissions and Deutz, Cummins and Caterpillar engines, or tires, tubes, and attachments which shall be warranted by their manufacturer, or local representative thereof.
- (ii) If the unit has been subject to misapplication, abuse, misuse, negligence of proper maintenance or other negligence, fire or other accident.
- (iii) If parts or attachments other than those made or marketed by New Holland North America, Inc. or New Holland Canada, Ltd., have been used in connection with the unit, and in the sole judgment of Company such use affects its performance, stability or reliability.
- (iv) If the unit has been altered or repaired outside of a New Holland dealership in a manner which, in the sole judgment of Company, affects its performance, stability or reliability.
- (v) Batteries are covered by a separate pro rata adjustment warranty. The pro-rata plan covers the battery fully for the basic product warranty period as indicated, with any remaining warranty pro-rated according to the months of service.
- (vi) The purchaser shall be responsible for payment of dealer travel time to the machine or to deliver the machine to the dealer's service shop for repair. New Holland warranty does not cover delivery charges or travel time.
- (vii) The Company shall have no liability for used equipment sold beyond the specified coverage period.
- (viii) No warranty shall apply to damage resulting from accident or damage caused by environment (such as exposure to corrosive material). The Company shall not be responsible for rental equipment used to replace the equipment being repaired.
- (ix) This warranty shall NOT apply to normal maintenance services (such as tune-ups, fuel injection system cleaning or wheel, brake and clutch adjustments), to normal replacement of service items (such as filters and brake or clutch linings), or to normal deterioration due to use or exposure (such as belts and exterior finish). New Holland shall not be responsible for normal replacement parts such as cutting knives, chains, belts, clutches, filters, oil, or other parts which are worn out, unless they are determined to be defective in material or workmanship.
- (x) This warranty shall NOT apply to any New Holland Product which is retailed or distributed by anyone other than New Holland North America, Inc. or New Holland Canada, Ltd., through its authorized dealers. This warranty shall NOT apply to any Product which is normally operated outside of the United States, and/or Canada.
- (xi) This warranty shall NOT apply if the purchaser, insurance company, or any other entity or individual acting on behalf of the purchaser seeks reimbursement for the dollar value of the repair(s) or replacement(s) covered under this warranty.
- (xii) If the injection pump has been set for fuel delivery above New Holland specifications.

RIGHT TO MAKE DESIGN CHANGES

Company reserves the right to make changes in the design and other changes in its products at any time and from time to time without notice and without incurring any obligation with respect to any product previously ordered from it, sold or shipped by it.

TABLE OF CONTENTS

Title	Page
Introduction	
Owner assistance	0-4
To the owner	0-5
Product identification	0-6
Important ecological considerations	0-7
Safety precautions	0-8
Safety decals	0-13
Universal symbols	0-16
Section 1 – General Information	1-1
Protective guards	1-2
Controls and instruments – location and function	1-3
Section 2 – Operation	2-1
Roll over protective structure (ROPS)	2-2
Cab	2-3
Cab roof-mounted controls	2-5
Cleaning the cab interior	2-12
Seats	2-13
Hand brake and foot pedals	2-19
Instrument console	2-20
Programming the main display	2-34
Starting the engine	2-43
Running-In procedure	2-47
Driving the tractor	2-47
Differential lock	2-62
Four wheel drive	2-63
Independent power take-off	2-64
Top link sensing hydraulics system	2-71
Electro-Link electronic draft control	2-74
Remote cylinders	2-83
Deluxe remote control valves	2-84
Three-point linkage	2-90
Drawbars and towing attachments	2-98
Front wheel track adjustments (two wheel drive)	2-102
Front wheel track adjustments (four-wheel drive)	2-105
Rear wheel track adjustment	2-107
Ballasting and tires	2-112
Section 3 – Lubrication and Maintenance	3-1
General Information	3-1
Lubrication and Maintenance Chart	3-6
Maintenance requirements – Controlled by Warning Lights	3-7
Maintenance requirements – Every 10 Hours or Daily	3-10
Maintenance requirements – Every 50 Hours	3-13
Maintenance requirements – Every 150 Hours	3-21
Maintenance requirements – Every 300 Hours	3-22
Maintenance requirements – Every 600 Hours	3-30
Maintenance requirements – Every 1200 Hours or Annually	3-34
Maintenance requirements – Every 1200 Hours or Two Years	3-41
Maintenance requirements – As Required	3-44
Section 4 – Specifications	4-1
First 50-hour Service Forms	4-13
Index	4-17

OWNER ASSISTANCE

We at New Holland and your New Holland dealer want you to be completely satisfied with your investment. Normally any problems with your equipment will be handled by your dealer's Service Department. Sometimes, however, misunderstanding can occur. If your problem has not been handled to your satisfaction, we suggest the following.

1. Contact the owner or General Manager of the dealership, explain the problem, and request assistance. When additional assistance is needed, your dealer has direct access to our branch office.
2. If you cannot obtain satisfaction by doing this, contact the branch office in your area and provide them with:
 - Your name, address, and telephone number
 - Machine model and serial number
 - Dealership name and address
 - Machine purchase date and amount of use
 - Nature of problem

Atlanta

4727 N Royal Atlanta Dr Suite P
Caller Service 105018
Tucker, GA 30085-5018
Telephone: (770) 723-3605
States: AL, FL, GA, KY, MS,
NC, SC, TN, VA

Dallas

1340 Walnut Hill Lane Bldg 2
P.O. Box 167528
Irving, TX 75016-7528
Telephone: (214) 756-4919
States: AR, AZ, CA, CO, HI, KS,
LA, MO, NM, NV, OK, TX, UT

Minneapolis

6301 W Old Shakopee Rd
P.O. Box 1342
Minneapolis, MN 55440-1342
Telephone: (612) 887-4231
States: AK, IA, ID, IL, MN, MT,
ND, NE, OR, SD, WA, WI, WY

New Holland

200 Commerce St.
P.O. Box 527
Mountville, PA 17554-0527
Telephone: (717) 285-8302
States: CT, DE, IN, MA, MD, ME,
MI, NH, NJ, NY, OH, PA, RI, VT,
WV

Calgary

Suite 220
3030 Third Ave. NE
Box 1616, Stn M
Calgary, AB
CANADA T2P 2M7
Telephone: (403) 569-3208

3. If you need further assistance contact:

*Service Department
Mail Station 500
New Holland North America, Inc.
New Holland, PA 17557*

When contacting your branch office or Service Department, be aware that your problem will likely be resolved in the dealership using the dealer's facilities, equipment, and personnel. So it is important that your initial contact be with the dealer.

A Service Publications Catalog & Order Form is available which lists the operator's and service manuals for many prior model and most current model Ford - New Holland - Versatile tractors, equipment, and consumer products. To obtain a copy of this catalog, please call 1-800-635-4913.

TO THE OWNER

GENERAL

This Manual has been prepared to assist you in the correct procedure for running-in, driving and operating and for the maintenance your new tractor. Your tractor, which was designed to power and propel itself, is intended for use in normal and customary agricultural applications.

Read this Manual carefully and keep it in a convenient place for future reference. If at any time you require advice concerning your tractor, do not hesitate to contact your authorised dealer. He has factory trained personnel, genuine manufacturers' parts and the necessary equipment to carry out all your service requirements.

Your tractor has been designed and built to give maximum performance, economy and ease of operation under a wide variety of operating conditions. Prior to delivery, the tractor was carefully inspected, both at the factory and by your dealer to ensure that it reaches you in optimum condition. To maintain this condition and ensure trouble-free operation, it is important that the routine services, as specified in section 3 of this Manual, are carried out at the recommended intervals.

CLEANING YOUR TRACTOR

Your tractor is a state-of-the-art machine with sophisticated, electronic controls. This should be borne in mind when cleaning the tractor, particularly if using a high pressure washer. Even though every precaution has been taken to safeguard electronic components and connections, the pressure generated by some of these machines is such that complete protection against water ingress cannot be guaranteed.

- When using a high pressure washer, do not stand too close to the tractor and avoid directing the jet at electronic components, electrical connections, breathers, seals, filler caps, etc.
- Never direct a cold water jet at a hot engine or exhaust.

SAFETY

The following pages list the precautions to be observed to ensure your safety and the safety of others. Read the safety precautions and follow the advice offered **before** operating the tractor.

FIRST 50 HOUR SERVICE

At the back of this Manual (just before the index) you will find the 50-hour service reports.

After you have operated the tractor for 50 hours, take your tractor, together with this Manual, to your dealer. He will then perform the factory recommended 50 hour service and complete the service report sheets. The first sheet is the dealer's copy and should be removed by the dealer after the service has been carried out. The second sheet is your copy of the service performed. **Ensure that you and the dealer sign both copies.**

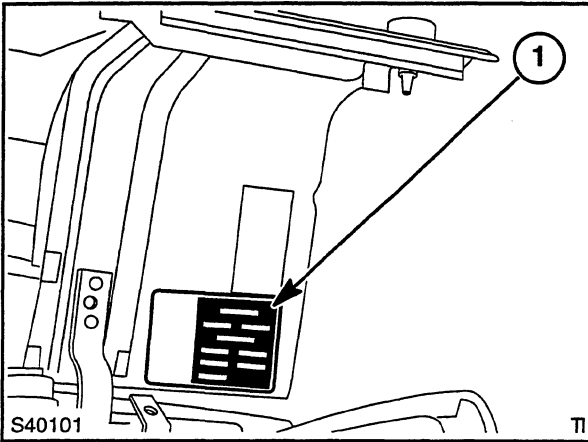
SERVICE PARTS

It should be pointed out that genuine parts have been examined and approved by the Company. The installation and/or use of 'non-genuine' products could have negative effects upon the design characteristics of your tractor and thereby affect it's safety. The Company is not liable for any damage caused by the use of 'non-genuine' parts and accessories.

It is prohibited to carry out any modifications to the tractor unless specifically authorised, in writing, by the After Sales Service department of the Company.

WARRANTY

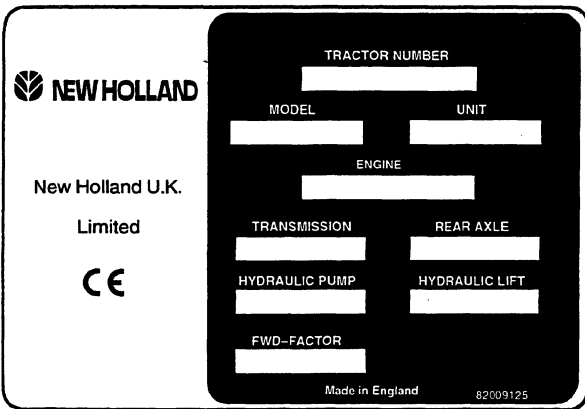
Your tractor is warranted according to legal rights in your country and the contractual agreement with the selling dealer. No warranty shall, however, apply if the tractor has not been used, adjusted and maintained according to the instructions given in the Operator's Manual.



0-1

The tractor and major components are identified using serial numbers and/or manufacturing codes. Tractor identification data must be supplied to the dealer when requesting parts or service and will also be needed to aid in identifying the tractor if it is ever stolen.

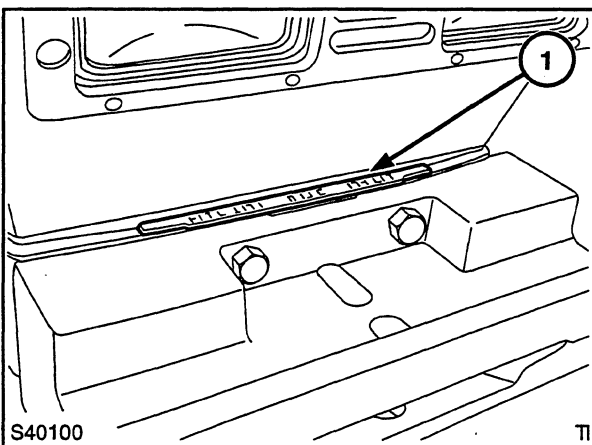
The following provides the locations of the identification data.



0-2

Vehicle Identification Plate – Figures 0-1 and 0-2

The vehicle identification plate is located on the underside of the hood, as shown in (1) Figure 0-1. Record the information on the sample identification plate, Figure 0-2.



0-3

Tractor Identification – Figure 0-3

The serial number and model identification information is stamped on the top of the front support (1). These numbers are also repeated on the vehicle identification plate reproduced above.

Cab/Frame Identification – Figure 0-4

The cab/frame serial number and other information is on the OECD certification plate (1) on the inner surface of the left-hand crossrail, beneath the windscreen. If your tractor does not have a cab a similar plate is fixed to the ROPS frame. Record the serial number below for quick reference.



0-4

Cab Serial No. _____

IMPORTANT ECOLOGICAL CONSIDERATIONS

Soil, air and water are vital factors of agriculture and life in general. Where legislation does not yet rule the treatment of some of the substances which are required by advanced technology, common sense should govern the use and disposal of products of a chemical and petrochemical nature.

The following are recommendations which may be of assistance:

- Become acquainted with and ensure that you understand the relative legislation applicable to your country.
- Where no legislation exists, obtain information from suppliers of oils, filters, batteries, fuels, anti-freeze, cleaning agents, etc., with regard to their effect on man and nature and how to safely store, use and dispose of these substances. Agricultural consultants will, in many cases, be able to help you as well.

HELPFUL HINTS

1. Avoid filling tanks using jerrycans or inappropriate pressurised fuel delivery systems which may cause considerable spillage.
2. In general, avoid skin contact with all fuels, oils, acids, solvents, etc. Most of them contain substances which can be harmful to your health.
3. Modern oils contain additives. Do not burn contaminated fuels and/or waste oils in ordinary heating systems.

4. Avoid spillage when draining off used engine coolant mixtures, engine, gearbox and hydraulic oils, brake fluids, etc. Do not mix drained brake fluids or fuels with lubricants. Store them safely until they can be disposed of in a proper way to comply with local legislation and available resources.

5. Modern coolant mixtures, i.e. antifreeze and other additives, should be replaced every two years. They should not be allowed to get into the soil but should be collected and disposed of safely.

6. Do not open the air-conditioning system yourself. It contains gases which should not be released into the atmosphere. Your dealer or air conditioning specialist has a special extractor for this purpose and will have to recharge the system anyway.

7. Repair any leaks or defects in the engine cooling or hydraulic system immediately.

8. Do not increase the pressure in a pressurised circuit as this may lead to the components exploding.

9. Protect hoses during welding as penetrating weld splatter may burn a hole or weaken them, causing the loss of oils, coolant, etc.

A careful operator is the best operator. Most accidents can be avoided by observing certain precautions. To help prevent accidents, read and take the following precautions **before** driving, operating or servicing the tractor. Equipment should be operated only by those who are responsible and instructed to do so.

SAFETY PRECAUTIONS

PRECAUTIONARY STATEMENTS

Throughout this Manual you will see text in *italics*, preceded by the words **NOTE**, **ATTENTION**, **IMPORTANT CAUTION**, **WARNING** or **DANGER**. Such text has the following significance:


Machine Safety


NOTE: *This text stresses a correct operating technique or procedure.*


ATTENTION: *This text warns the operator of potential machine damage if a certain procedure is not followed.*

IMPORTANT: *This text informs the reader of something that he needs to know to prevent minor machine damage if a certain procedure is not followed.*

Personal Safety

 **CAUTION:** *The word CAUTION is used where a safe behavioural practice, according to operating and maintenance instructions and common safety practices will protect the operator and others from accident involvement.*

 **WARNING:** *The word WARNING denotes a potential or hidden hazard which could possibly cause serious injury. It is used to warn operators and others to exercise due care and attention to avoid a surprise accident with machinery.*

 **DANGER:** *The word DANGER denotes a forbidden practice in connection with a serious hazard.*

Failure to follow the CAUTION, WARNING and DANGER instructions may result in serious bodily injury or even death.

THE TRACTOR

1. Read the Operator's Manual carefully before using the tractor. Lack of operating knowledge can lead to accidents.
2. Only allow properly trained and qualified persons to operate the tractor.
3. To prevent falls, use the handrails and step plates when getting on and off the tractor. Keep steps and platform clear of mud and debris.
4. Replace all missing, illegible or damaged safety decals.
5. Keep safety decals free of dirt or grime.
6. Do not permit anyone but the operator to ride on the tractor unless a passenger seat is fitted. There is no safe place for extra passengers otherwise.
7. Keep children away from the tractor and farm machinery at all times.
8. Do not modify or alter or permit anyone else to modify or alter the tractor or any of its components or any tractor function without first consulting your dealer.
9. Install all guards before starting the engine or operating the tractor.

Thank you so much for reading.
Please click the “Buy Now!”
button below to download the
complete manual.



After you pay.

You can download the most
perfect and complete manual in
the world immediately.

Our support email:

ebooklibonline@outlook.com