

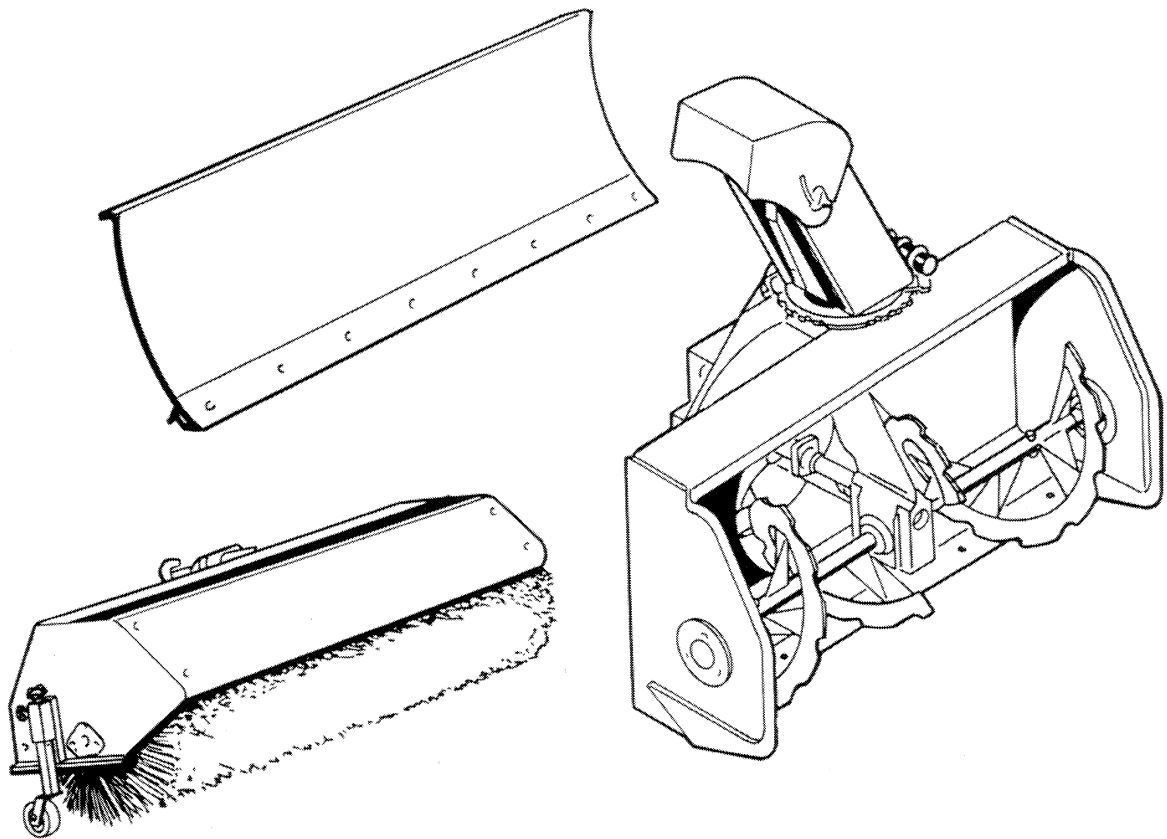
# FORD



## Operator's Manual

### Front Attachments for GT Tractors

Subframe with Quick Hitch System	9828544
Driveline	9828545
46" Front Blade	9607259
42" Two Stage Snowblower	9802562
47" Rotary Broom	9801822



42641080

Reprinted

# OWNER ASSISTANCE

We at Ford New Holland and your Ford New Holland dealer want you to be completely satisfied with your investment. Normally any problems with your equipment will be handled by your dealer's Service Department. Sometimes, however, misunderstanding can occur. If your problem has not been handled to your satisfaction, we suggest the following.

1. Contact the owner or General Manager of the dealership, explain the problem and request assistance. When additional assistance is needed, your dealer has direct access to our branch office.
2. If you cannot obtain satisfaction by doing this, contact the Ford New Holland branch office in your area and provide them with:

- \* Your name, address and telephone number
- \* Machine model and serial number
- \* Dealership name and address
- \* Machine purchase date and amount of use
- \* Nature of problem

## **ATLANTA**

2000 Mountain Ind. Blvd.  
Tucker, GA 30084  
Telephone: (404) 723-3615

## **DALLAS**

P.O. Box 10227  
Dallas, TX 75207  
Telephone: (214) 939-4919

## **MINNEAPOLIS**

P.O. Box 1342  
Minneapolis, MN 55440  
Telephone: (612) 887-4232

## **NEW HOLLAND**

500 Diller Avenue  
New Holland, PA 17557  
Telephone: (717) 355-3951

## **SAN FRANCISCO**

P.O. Box 6100  
Fairfield, CA 94533  
Telephone: (707) 423-9200

## **CALGARY**

Box 1616, Main P.O.  
Calgary, AB  
CANADA T2P 2M7  
Telephone: (403) 569-3208

## **TORONTO**

P.O. Box 3610  
Guelph, ON  
CANADA N1H 6P1  
Telephone: (519) 767-4824

3. If you need further assistance contact:

SERVICE DEPARTMENT  
MAIN STATION 500  
FORD NEW HOLLAND, INC.  
NEW HOLLAND, PA 17557

When contacting Ford New Holland's branch office or Service Department, be aware that your problem will likely be resolved in the dealership using the dealer's facilities, equipment and personnel! So it is important that your initial contact be with the dealer.

# TABLE OF CONTENTS

	PAGE
INTRODUCTION .....	2
SAFETY PRECAUTIONS .....	3
o SUBFRAME WITH QUICK HITCH SYSTEM	
ASSEMBLY - Step 1: Subframe preparation .....	6
- Step 2: Subframe installation .....	6
- Step 3: Lift system installation .....	7
DISMOUNTING .....	8
o 46" FRONT BLADE	
OPERATION - Operating controls & adjustment .....	9
STORAGE .....	10
ASSEMBLY - Step 1: Blade assembly .....	11
- Step 2: Blade installation .....	12
o 42" TWO STAGE SNOWBLOWER	
OPERATION - Operating controls & adjustment .....	13
- Snow removal methods .....	15
- Maintenance and storage .....	16
ASSEMBLY - Step 1: Snowblower preparation .....	17
- Step 2: Attaching snowblower to tractor .....	18
DISMOUNTING .....	20
SAFETY DECALS .....	21
o 47" ROTARY BROOM	
OPERATION - Operating controls & adjustments .....	22
- Applications .....	23
MAINTENANCE	
- Maintenance & storage .....	24
- Brush replacement .....	25
ASSEMBLY - Step 1: Broom preparation .....	27
- Step 2: Attaching broom to tractor .....	27
DISMOUNTING .....	29
SAFETY DECALS .....	30
ATTACHMENTS SPECIFICATIONS .....	31
ASSEMBLY REFERENCE DRAWING	
Subframe with Quick Hitch System .....	32
42" Two Stage Snowblower .....	34
Components .....	36
SAFETY DECALS .....	42
47" Rotary Broom .....	43
Components .....	49
SAFETY DECALS .....	53
46" Front Blade .....	54
HARDWARE TIGHTENING TORQUE	
Inch Hardware .....	55
Metric Hardware .....	56

# INTRODUCTION

## TO THE PURCHASER

These new attachments were carefully designed to give years of dependable service.

This manual has been provided to assist in the safe operation and service of your attachment.

**NOTE:** All photographs and illustrations in the manual may not necessarily depict the actual models or equipment, but are intended for reference only and are based on the latest product information available at the time of publication.

Familiarize yourself fully with the safety recommendations and operating procedures before putting the machine to use. Carefully read, understand and follow these recommendations and insist that they be followed by those who work with you.



**THIS SAFETY ALERT SYMBOL IDENTIFIES IMPORTANT SAFETY MESSAGES IN THIS MANUAL. WHEN YOU SEE IT, BE ALERT TO THE POSSIBILITY OF PERSONAL INJURY AND CAREFULLY READ THE MESSAGE THAT FOLLOWS.**

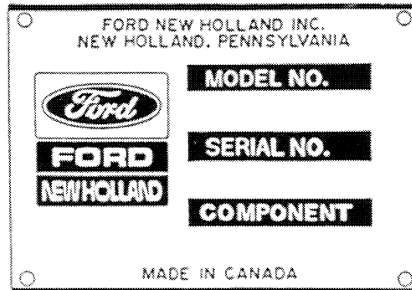
Record your attachment model and serial number. Your **FORD NEW HOLLAND** dealer requires this information to give you prompt, efficient service when ordering parts or attachments. Service with genuine **FORD NEW HOLLAND** parts when replacement parts are required.

Right hand and left hand are determined by sitting on the tractor seat facing forward.

MODEL .....

SERIAL NUMBER .....

DATE PURCHASED .....



THE SERIAL NUMBER PLATE IS LOCATED ON EACH ATTACHMENT. IT IS RIVETED ON AND SHOULD NOT BE REMOVED.

# SAFETY PRECAUTIONS

WHENEVER YOU SEE THIS SYMBOL



IT MEANS:

ATTENTION!

BECOME ALERT!

YOUR SAFETY IS INVOLVED!



The signal word "DANGER" signifies that a source of extreme danger to a person on or near a machine exists as a result of the very nature of the machine itself. This danger to persons is such that it would result in a high likelihood of death or permanent injury if the recommended precautions are not taken.



The signal word "WARNING" indicates that a source of danger to a person on or near a machine exists which may result in death or injury if the recommended precautions are not taken.

A CAREFUL OPERATOR IS THE BEST OPERATOR. MOST ACCIDENTS CAN BE AVOIDED BY OBSERVING CERTAIN PRECAUTIONS. READ AND TAKE THE FOLLOWING PRECAUTIONS BEFORE OPERATING THESE ATTACHMENTS TO HELP PREVENT ACCIDENTS. EQUIPMENT SHOULD BE OPERATED ONLY BY THOSE WHO ARE RESPONSIBLE AND INSTRUCTED TO DO SO.

## THE ATTACHMENT (S)

1. Read this manual carefully to acquaint yourself with the equipment as well as the tractor operator's manual. Working with unfamiliar equipment can lead to accidents. Be thoroughly familiar with the controls and proper use of the equipment. Know how to stop the unit and disengage the controls quickly.
2. Keep all shields in place and properly tighten all mounting hardware.
3. Periodically inspect all moving parts for wear and replace with authorized service parts if an excessive amount of wear is present.
4. Replace all missing, illegible, or damaged safety and warning decals. See list of decals at the end of your attachment(s) section(s).
5. Do not modify or alter this equipment or any of its components, or any equipment function without first consulting a Ford New Holland dealer.
6. Keep safety decals clean of dirt and grime.

## GENERAL PREPARATION

1. Be sure the PTO is disengaged before starting the engine.
2. Clothing worn by the operator should be fairly tight and belted. Loose clothing should not be permitted because of the danger of getting into moving parts.

# SAFETY PRECAUTIONS

3. Prolonged exposure to loud noise can cause impairment or loss of hearing. Wear a suitable hearing protective device such as earmuffs or earplugs to protect against objectionable or uncomfortable noises.

## OPERATING THE ATTACHMENT(S)

THE FOLLOWING PRECAUTIONS ARE SUGGESTED BEFORE OPERATING EACH OF THESE ATTACHMENTS TO HELP PREVENT ACCIDENTS.

1. Never allow anyone to ride on the attachment.
2. Clear the area of people and debris before commencing operation.
3. Never allow children to operate equipment. Never allow adults to operate equipment without proper instruction.
4. Always keep the attachment discharge directed away from people and objects which could be struck by debris.
5. Never allow anyone in front of unit.
6. Never leave attachment in raised position.
7. Never operate the attachment without good visibility and lighting.
8. Never clean or adjust PTO-driven equipment with the tractor engine running.
9. When operating PTO-driven equipment, always shut off the engine and wait for the PTO to stop turning before getting off the tractor, before unplugging the collector/impeller housing or discharge chute and before making any repairs, adjustments or inspections.
10. Take all possible precautions when leaving the vehicle unattended. Disengage the PTO, lower the attachment, shift into neutral, set the parking brake, stop the engine and remove the key.
11. Disengage power to attachment when transporting or when not in use.
12. The operator must never get off the tractor while it is in motion.
13. Exercise extreme caution when operating on or crossing gravel drives, walks or roads. Stay alert for the hidden hazards of traffic.
14. Do not put hands or feet near rotating parts. Keep clear of discharge opening at all times.
15. Do not use hands or feet to unplug spout.
16. Keep a careful watch for debris that could enter the blower while operating.
17. Never operate the attachment without guards, shields and other safety protective devices in place.
18. Never operate machine at high transport speeds on a slippery surface.
19. Use care when backing up.
20. After striking a foreign object, stop the engine, wait for all movements to stop, thoroughly inspect the attachment for damage and repair the damage before restarting and operating the attachment.
21. If the rotary broom or snowblower should start to vibrate abnormally, stop the engine immediately and check for the cause. Vibration is generally a warning of trouble.
22. Do not clear snow across the face of slopes. Exercise extreme caution when changing direction on slopes. Do not attempt to clear steep slopes.

## THE TRACTOR

1. Read the Operator's Manual carefully before using tractor. Lack of operator knowledge can lead to accidents.

# SAFETY PRECAUTIONS

2. Do not permit anyone but the operator to ride on the tractor. There is no safe place for extra riders.

## OPERATING THE TRACTOR

1. Never start the engine while standing beside the tractor. Always sit on the tractor seat while starting the engine or operating controls.
2. Never run the tractor engine in a closed building without adequate ventilation as the exhaust fumes are very dangerous.
4. Never allow an open flame near the fuel tank or battery.
5. Use an SMV emblem and the flasher warning lamps when traveling on public roads, day or night, unless prohibited by law in your state.
6. Make sure the PTO shield is installed when using PTO-driven equipment and always replace the PTO shield if damaged.
7. Always bring the tractor to a complete stop and shut off the engine before getting off the tractor.
8. Never park the tractor on a steep incline.
9. Use care when operating on steep grades to maintain proper stability.
10. Keep the tractor in gear when going downhill.
11. Use of tire chains and wheel weights for better traction and stability is recommended. See Tractor Operator's Manual for recommended weighing.
12. Always drive the tractor at speeds compatible with safety, especially when operating over rough ground, crossing ditches, or when turning.

13. Handle fuel with care as it is highly flammable.
  - a) Use approved fuel container.
  - b) Never add fuel to a running engine or a hot engine.
  - c) Fill fuel tank outdoors with extreme care. Never fill fuel tank indoors.
  - d) Replace fuel cap securely and wipe up spilled fuel.

## MAINTENANCE AND STORAGE

1. Provide adequate blocking before working under an attachment when in raised position.
2. Make certain all moving parts have stopped before cleaning, repairing or inspecting attachment.
3. Do not run engine indoors.
4. Do not attempt to repair or conduct maintenance when the tractor engine is running, or when the attachment is raised.

## MAINTENANCE AND STORAGE

1. Provide adequate blocking before working under an attachment when in raised position.
2. Make certain all moving parts have stopped before cleaning, repairing or inspecting.
4. Do not run engine indoors.

# ASSEMBLY

## SUBFRAME WITH QUICK HITCH SYSTEM

**IMPORTANT:** Before beginning assembly of this subframe, make sure tractor is on a level surface, parking brake is set and that engine is turned off. Measure the distance between the rear tractor wheels, from tire center to center. For proper stability, this distance should be 28.5 inches. If it is not, remove and reinstall the rear wheels so that the valve stems are on the outside.

### STEP 1: SUBFRAME PREPARATION

- a) Remove the tractor PTO guard.
- b) Position the subframe in the male quick hitch between the hinge tabs. (fig.1 items 3 & 4)
- c) Place a  $5/32$ " x 1" cotter pin through the hole in one end of the  $5/8$ " x  $10\ 5/8$ " pin (fig.1, item 1). Place an  $11/16$ " flatwasher (item 2) over the pin, on the inside of the cotter pin. While aligning the holes in the subframe and quick hitch hinge tabs, insert the long pin. Place an  $11/16$ " flatwasher over the other end of the pin and secure with a  $5/32$ " x 1" cotter pin. If there is too much end play in the hinge, place one or two shim washers (on both sides) between the hinge tabs of the subframe rear and front sections before inserting the long pin.

### STEP 2: SUBFRAME INSTALLATION

- a) Position subframe assembly under tractor by way of the left hand side of the tractor between front and rear wheels. Male quick hitch should extend in front of tractor.
- b) Lift the front of the subframe (fig.1, item 3) and insert the welded pins in the slots of tractor's fast hitch plates (fig.2, item 1) and slide to the rear.
- c) Lift the rear portion of the subframe (fig.2, item 2) up between the tractor weldments (item 3) and hold in place with a  $7/16$ " x  $11\ 1/2$ " pin (fig.3, item 1). Place a  $1/2$ " flatwasher on each end of pin and secure

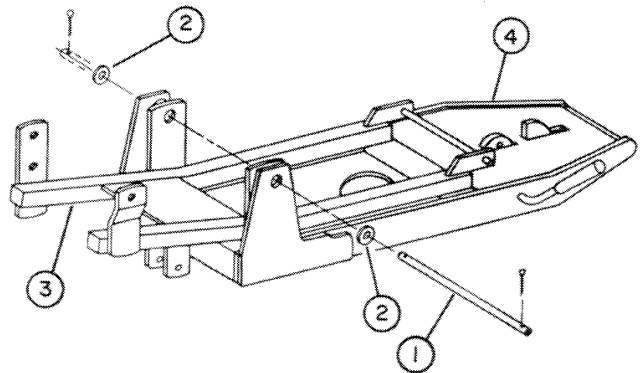


FIGURE 1

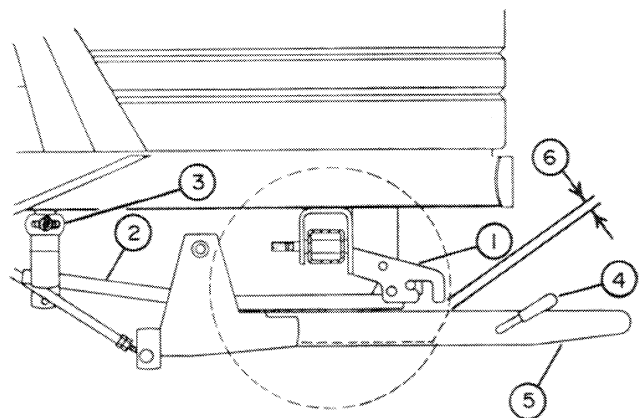


FIGURE 2



# ASSEMBLY

with 2.5mm x 40mm hairpins.

## STEP 3: LIFT SYSTEM INSTALLATION

- a) Thread a 5/8" nut (fig. 4, item 1) on the bolt with the sleeve head (fig.4, item 2). Screw this bolt into the free end of the push arm (item 4) until the total length of the push arm is approximately 21 1/2" center to center of holes.
  - b) Start tractor and set lift mechanism at maximum height. Turn engine off and set parking brake.
  - c) Lift the front section of the male hitch (fig.2, item 5) to the maximum and block in this position.
  - d) Attach push arm to the weldment on the back of the male hitch using a 17/32" x 2" pin (fig.4, item 3). Insert pin and secure with a 3mm x 65mm hairpin.
  - e) Attach tube end of push arm (fig.4,item 4) to lift lever (item 5) using a 17/32" x 2" pin (item 6) flatwasher and a 3mm x 65mm hair pin.
- NOTE: Check to make sure there is clearance between the tractor fast hitch plates and the male hitch in the fully raised position (fig.2, item 6).
- f) Place the rubber handle grip on the male quick hitch locking lever (fig.2,item 4).

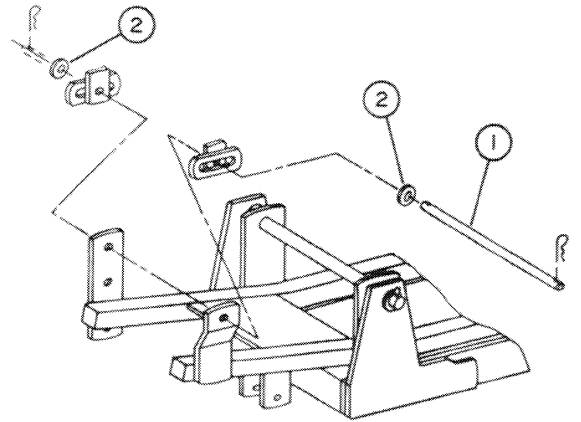


FIGURE 3

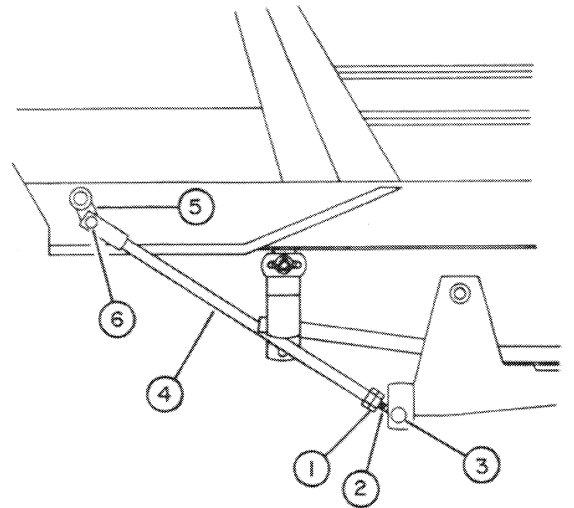


FIGURE 4

Thank you so much for reading.  
Please click the “Buy Now!”  
button below to download the  
complete manual.



After you pay.

You can download the most  
perfect and complete manual in  
the world immediately.

Our support email:

[ebooklibonline@outlook.com](mailto:ebooklibonline@outlook.com)