



FORD

OPERATOR'S MANUAL

42670020

6700-7700

Reprinted

FOREWORD

DEAR CUSTOMER — PLEASE READ THIS MANUAL CAREFULLY BEFORE OPERATING YOUR TRACTOR AND KEEP IT IN A CONVENIENT LOCATION FOR FUTURE REFERENCE.

This manual has been developed to assist you in understanding how to operate and maintain your Ford Tractor. It contains a list of safety precautions, a discussion of the controls and instruments, procedures for operating the tractor, a maintenance schedule, a brief troubleshooting section, and a specification section. The manual also contains a list of pre-delivery and 50 hour checks which will be performed by your Ford Tractor-Equipment Dealer.

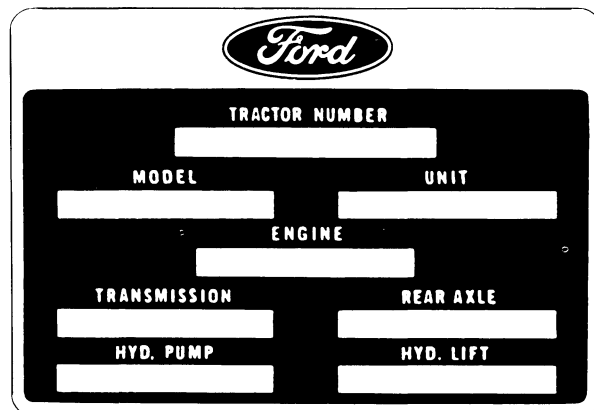
Your Ford Tractor was carefully inspected by the factory and by your Ford Tractor-Equipment Dealer to be certain that it is ready to go. Follow the break-in, operation, and maintenance instructions to keep it in this "ready to go" condition.

The complete list of pre-delivery checks made by your dealer is on pages 93 and 95. Both copies should be completed and signed by you and the dealer. Retain the copy on page 93. Your dealer will keep the copy on page 95.

At or shortly after fifty hours operation, take your tractor and this manual to your dealer. He will perform the fifty hour checks listed on pages 93 and 95 without charge, except for lubricants or filters which are replaced as part of normal maintenance. Both copies of the 50 hour checks should be completed; the dealer retains the copy on page 95 and you retain the copy on page 93.

The warranty coverage on your Ford Tractor is explained in the Warranty and Limitation of Liability, Ford Tractors and Equipment Form. Your dealer will provide you with a copy of the form and retain a copy which you have signed. Read the warranty and ask your dealer to explain any point which you do not understand.

A vehicle identification plate is located on the under side of the radiator filler cap access door. The numbers on the identification plate and the information listed below are important if your tractor requires service in the future. For your convenience have the dealer record the information in the spaces below.



The image shows a rectangular identification plate with a black background and white text. At the top center is the Ford logo. Below it, the text "TRACTOR NUMBER" is followed by a white rectangular box. Underneath, the words "MODEL" and "UNIT" are printed, each followed by a white rectangular box. In the center, the word "ENGINE" is printed above a white rectangular box. Below this, the words "TRANSMISSION" and "REAR AXLE" are printed, each followed by a white rectangular box. At the bottom, the words "HYD. PUMP" and "HYD. LIFT" are printed, each followed by a white rectangular box.

Delivery Date

Owner's Name

Owner's Address

Ford Tractor-Equipment Dealer

Dealer's Address

INTERNATIONAL SYMBOLS

As a guide to the operation of your tractor, various international symbols have been utilized on the instruments and controls. The symbols are shown below with an indication of their meaning.



Engine speed (rev/min x 100)



Hours recorded



Engine water temperature



Fuel level



Fuel cut-off



Lights



Horn



Engine oil pressure



Air filter



Alternator charge



Heater temperature control



Air conditioner temperature control



Fan



Wipe/wash control



Power take-off (on)



Power take-off (off)



'Tortoise', slow or minimum setting



'Hare', fast or maximum setting



Caution

CONTENTS

international symbols	2
safety precautions	4
controls and instruments	5
electric controls and lights	7
engine and brake controls	9
transmission controls	10
PTO and hydraulic controls	10
cab controls	14
seats	18
operation	19
starting the engine	20
driving the tractor	26
attaching equipment to the tractor	31
operating the PTO	39
operating the hydraulic system	43
tread setting and dual wheels	53
lubrication and maintenance	63
lubrication and maintenance chart	64
fuels and lubricants	65
periodic maintenance	67
general maintenance	78
storing the tractor	83
troubleshooting	84
specifications	87
safety decals	92
pre-delivery and 50 hour service	93
index	97

SAFETY PRECAUTIONS

A careful operator is the best operator. Most accidents can be avoided by observing certain precautions. **Read and take the following precautions before operating this tractor to help prevent accidents.**

THE TRACTOR

1. Read the Operator's Manual carefully before using the tractor. Lack of operating knowledge can lead to accidents.
2. Use an approved roll bar and seat belt for safe operation. If your tractor is not equipped with a roll bar and seat belt, see your Ford Tractor-Equipment Dealer.
3. Use the handholds and step plates when getting on and off the tractor to prevent falls.
4. Always use the seat belt when the roll bar is installed. Do not use the seat belt if the roll bar is removed from the tractor.
5. Keep the tractor in good operating condition for your safety.
6. Do not allow an open flame near the fuel tank or battery to prevent fires and explosions.
7. Do not permit anyone but the operator to ride on the tractor. There is no safe place for extra riders.
8. Replace safety and warning decals when they become illegible.

OPERATING THE TRACTOR

9. Apply the parking brake, place the P.T.O. lever in the "OFF" position, the lift control lever in the down position, the remote control valve levers in the neutral position, and the transmission in neutral before starting the tractor.
10. Do not start the engine while standing beside the tractor. Always sit in the tractor seat when starting the engine.
11. Do not bypass the safety starter switch. Consult your Ford Tractor-Equipment Dealer if your safety starter controls malfunction.
12. Do not get off the tractor while it is in motion.
13. Shut off the engine and apply the parking brake before getting off the tractor.
14. Do not park the tractor on a steep incline.
15. Do not operate the tractor engine in an enclosed building without adequate ventilation. Exhaust fumes can suffocate you.

16. Pull only from the swinging drawbar or the lower link drawbar in the down position with stays installed. Pulling from the tractor rear axle or any point above the axle may cause the tractor to upset.
17. If the front end of the tractor tends to rise when heavy implements are attached to the three-point hitch, install front end or front wheel weights. Do not operate the tractor with a light front end.
18. Always set the hydraulic selector lever in position control when attaching equipment, when transporting equipment, or when no equipment is attached.
19. Do not leave equipment in the raised position.
20. Use the Flasher/Turn Signal lights when traveling on public roads both day and night unless prohibited by law.

DRIVING THE TRACTOR

21. Watch where you are going—especially at row ends, on roads, and around trees.
22. Drive the tractor with care and at speeds compatible with safety, especially when operating over rough ground, crossing ditches, slopes, and when turning to avoid upsets.
23. Keep the tractor in the same gear when going downhill as used when going uphill.
24. When the tractor is stuck, back out to prevent upset.

OPERATING THE P.T.O.

25. When operating P.T.O. driven equipment, shut off the engine and wait until the P.T.O. stops before getting off the tractor and disconnecting the equipment.
26. Do not wear loose clothing when operating the power take-off, or when near rotating equipment.
27. When operating stationary P.T.O. driven equipment, always apply the tractor parking brake and block the rear wheels front and back.
28. Do not install or remove the belt while the belt pulley is in motion.
29. To avoid injury, do not clean, adjust, unclog or service P.T.O. driven equipment when the tractor engine is running.
30. Make sure the P.T.O. shield is installed when using P.T.O. driven equipment, and always replace the P.T.O. shaft cap when the P.T.O. is not in use.

Whenever you see this symbol



it means:

ATTENTION! BECOME ALERT! YOUR SAFETY IS INVOLVED!

CONTROLS and INSTRUMENTS

Before operating the tractor, become familiar with the controls and instruments discussed in this section.

After familiarizing yourself with the controls and instruments, follow the subsequent instructions in the Operation Section to obtain optimum and safe performance from the tractor.

Know your controls and instruments
 to assure Safe Operation. 

—CONTROLS AND INSTRUMENTS—

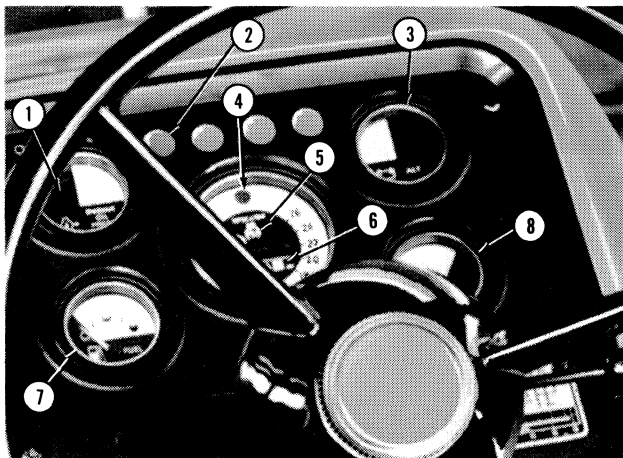


Figure 1
Instruments

- | | |
|--|-------------------------------------|
| 1. Engine Oil Pressure Warning Light | 5. Tachometer |
| 2. Air Cleaner Restriction Indicator Light | 6. Hourmeter |
| 3. Alternator Warning Light | 7. Fuel Gauge |
| 4. Headlight High Beam Indicator Light | 8. Engine Coolant Temperature Gauge |

ENGINE OIL PRESSURE WARNING LIGHT

The engine oil pressure warning light (1) Figure 1, illuminates when:

1. The key-starter switch is in the "run" position and the engine is not running, or
2. When the key-starter switch is in the "run" position, the engine is running but the engine oil pressure is not adequate to lubricate the engine properly.

Stop the engine immediately if the light does not extinguish when the engine starts or if the light illuminates while the engine is running. Investigate the cause.

NOTE: *The operator must still check the dipstick to determine the crankcase oil level.*

AIR CLEANER RESTRICTION INDICATOR LIGHT

The air cleaner restriction indicator light (2), Figure 1, illuminates after the key-starter switch is in the run position and engine is not running or when the air cleaner requires service. Service the air cleaner if the light illuminates while the engine is running.

ALTERNATOR WARNING LIGHT

The alternator warning light (3), Figure 1, illuminates when the alternator is not supplying enough current to meet the tractor electrical requirements. The light should illuminate when the key is turned to the "run" position and extinguish while the engine is running. If the light illuminates while the engine is running, stop the engine and investigate the cause.

HEADLIGHT HIGH BEAM INDICATOR LIGHT

The headlight high beam indicator light (4), Figure 1, illuminates when the headlight high beams are on.

TACHOMETER

The tachometer (5), Figure 1, indicates engine speed in revolutions per minute (rpm). Use the tachometer to determine ground and power take-off speeds.

HOURLMETER

The hour meter (6), Figure 1, records engine hours at 1540 engine rpm. Engine speeds faster than 1540 rpm record hours faster than clock hours while engine speeds slower than 1540 rpm record hours slower than clock hours.

Use the hourmeter as a guide to determine service intervals.

FUEL GAUGE

The fuel gauge needle (7), Figure 1, indicates the fuel level in the tank(s).

Refer to FUEL TANK SENDER SWITCH for additional information about tractors with auxiliary (saddle) fuel tanks.

ENGINE TEMPERATURE GAUGE

The engine temperature gauge (8), Figure 1, indicates the temperature of the engine coolant. The coolant is at normal operating temperature when the needle is in the white zone and above normal operating temperature when the needle is in the red zone.

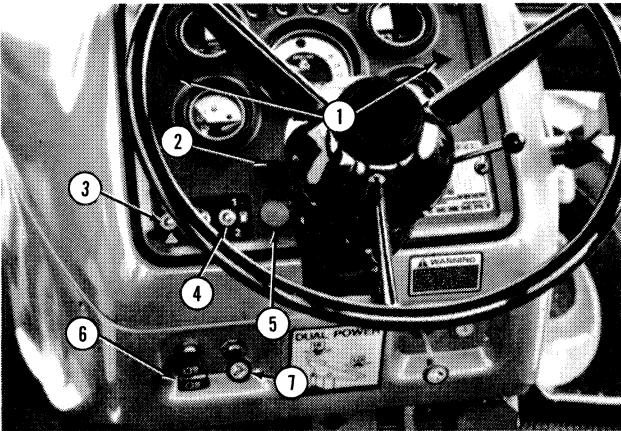
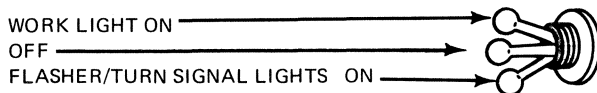


Figure 2
Controls

- | | |
|---|----------------------------|
| 1. Flasher Light/Turn Signal Indicator Lights | 4. Fuel Tank Sender Switch |
| 2. Turn Signal Switch | 5. Horn Button |
| 3. Flasher Light/Work Light Switch | 6. Headlight Switch |
| | 7. Cigarette Lighter |

FLASHER LIGHT/WORK LIGHT SWITCH

The flasher light/work light switch (3), Figure 2, is used to control the work lights and the flasher/turn signal lights. See Figures 3 to 6. The switch positions are:



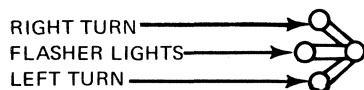
NOTE: For your protection, use the flasher/turn signal lights both day and night when traveling on public roads.

TURN SIGNAL SWITCH

The turn signal switch (2), Figure 2, is used to signal a turn and to operate the flasher lights.

NOTE: The Flasher Light/Work Light Switch must be in the flasher light/turn signal lights "on" position before the turn signal switch will function.

The turn signal switch positions are:

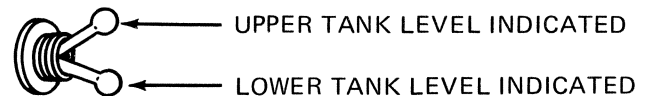


Both lights flash when the switch is in the flasher lights position. When a left turn is signaled, the left light flashes and the right burns steadily. On right turns, the right light flashes and the left burns steadily.

The flasher/turn signal indicator lights (1), Figure 2, illuminate when the respective flasher light is on.

FUEL TANK SENDER SWITCH

The fuel tank sender switch (4), Figure 2, is standard on all Model 7700 tractors and 6700 tractors with an optional auxiliary (saddle) fuel tank. Use the switch to check the fuel level in the upper tank or the auxiliary tank. Fuel always flows to the engine from the lower tank, so the lower tank will always be full until the upper tank is empty. It is recommended that the switch be kept in the upper tank position until the upper tank is empty, then switch to the lower tank. The switch positions are:



HORN BUTTON

To sound the horn, push the horn button (5), Figure 2.

HEADLIGHT SWITCH

The headlight switch positions are:

OFF
HEADLIGHT LOW BEAMS AND TAIL LIGHT "ON"
HEADLIGHTS, FRONT WORK LIGHTS AND TAIL LIGHT "ON"



NOTE: Use only the low beams in approaching traffic to avoid blinding oncoming drivers.

The head and tail lights are shown in Figures 3-6.

TRACTOR LIGHTS

Your tractor is equipped with dual beam headlights, front work lights, flasher/turn signal lights, and a tail light. One or two rear work lights may be installed.

— CONTROLS AND INSTRUMENTS —

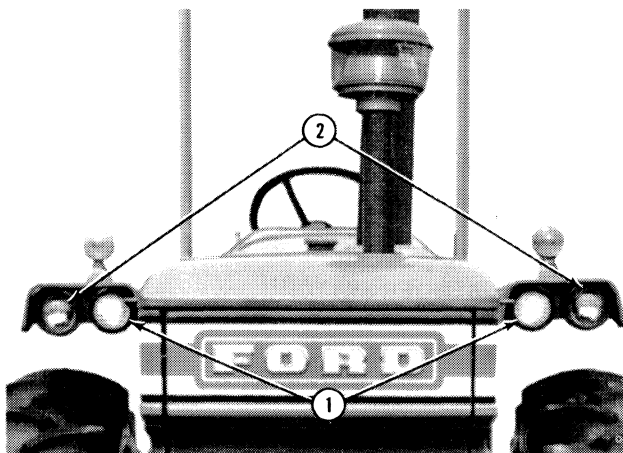


Figure 3

Front Lights-Tractor Without Cab

1. Front Work Lights 2. Dual Beam Headlights

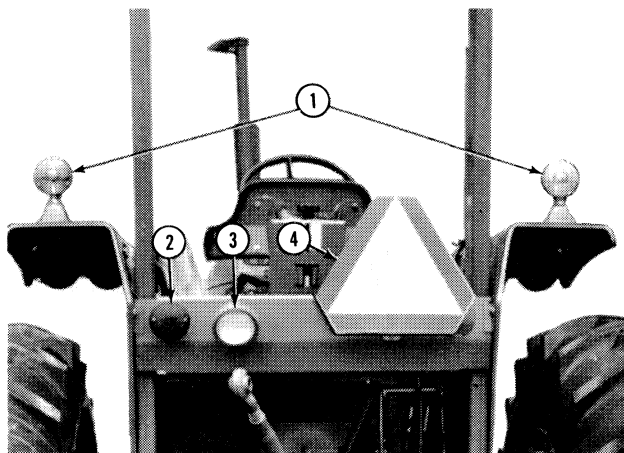


Figure 5

Rear Lights-Tractor Without Cab

1. Flasher/Turn Signal Lights 4. Slow Moving Vehicle (SMV) Emblem
2. Tail Light
3. Rear Work Light

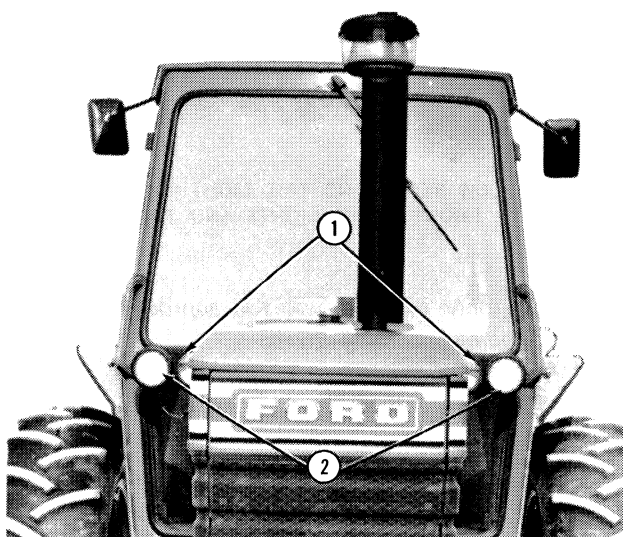


Figure 4

Front Lights-Tractor With Cab

1. Front Work Lights 2. Dual Beam Headlights

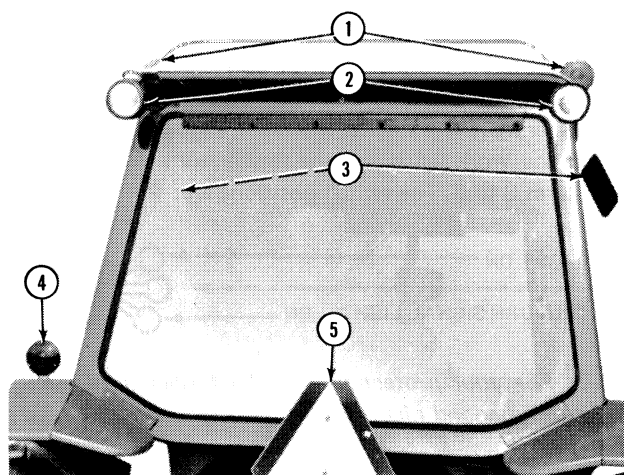


Figure 6

Rear Lights-Tractor With Cab

1. Flasher/Turn Signal Lights 4. Tail Light
2. Rear Work Lights 5. Slow Moving Vehicle (SMV) Emblem
3. Outside Rear View Mirrors

NOTE: Always use the slow moving vehicle (SMV) emblem when traveling on public roads for your protection.

Thank you so much for reading.
Please click the “Buy Now!”
button below to download the
complete manual.



After you pay.
You can download the most
perfect and complete manual in
the world immediately.

Our support email:
ebooklibonline@outlook.com