

# NEW HOLLAND

# OPERATOR'S MANUAL

**914A Mid-Mount  
Rear Discharge  
Direct Drive Mower**

72 inch Class II Model  
for 1320 - 1925 Tractors



---

# TABLE OF CONTENTS

---

<b>INTRODUCTION</b> .....	3
To the Owner & Operator .....	3
Identification Numbers .....	3
<b>SAFETY PRECAUTIONS</b> .....	4
The Mower .....	4
Mower Operation .....	4
The Tractor .....	4
Operating the Tractor & Mower .....	5
Servicing the Mower.....	5
<b>SAFETY DECALS</b> .....	6
Decal Locations .....	6
Care of Safety Decals .....	6
Safety Decal Illustrations .....	7
<b>ASSEMBLY INSTRUCTIONS</b> .....	8
General Instructions .....	8
Pre-Assembly Notes .....	8
Installing the Driveline .....	8
Installing the Lift System .....	9
Cushion Lift Installation .....	12
Deck Upstop Adjustments - Tractors w/R1 Ag. Tires .....	13
Mower Deck Installation .....	14
"Cushion Lift" Adjustment Instructions .....	15
<b>PRE-OPERATION INSTRUCTIONS</b> .....	18
<b>PRE-DELIVERY CHECKLIST</b> .....	19
<b>OPERATING INSTRUCTIONS</b> .....	20
General Information .....	20
Tips for Efficient Mowing .....	20
Cutting Heights .....	21
Front Gauge Wheels .....	21
Anti-Scalp Roller .....	22
Rear Wheels .....	22
Uneven Terrain .....	23
Rear Grass Discharge .....	23
Mower Transport Lock .....	24

---

## TABLE OF CONTENTS - Continued

---

<b>LUBRICATION</b> .....	25
Schedule .....	25
Gearbox Oil .....	25
<b>REMOVAL &amp; STORAGE</b> .....	26
Mower Removal .....	26
Seasonal Storage .....	26
Mower Reinstallation .....	26
<b>MAINTENANCE SECTION</b> .....	27
Blade Removal & Installation .....	27
Blade Sharpening .....	27
Belt Adjustment .....	28
Belt Replacement .....	28
Spindle Rebuilding .....	29
Reconditioning the Driveline .....	30
Gearbox Rebuilding .....	31
Driveline Shear Bolt & Snap Ring .....	32
<b>BOLT TORQUE CHART</b> .....	33
Standard Fastener Torques .....	33
Special Fastener Torques .....	33
<b>TROUBLESHOOTING GUIDE</b> .....	34
<b>SPECIFICATIONS</b> .....	36
<b>PARTS ILLUSTRATIONS</b> .....	37
Deck Components (Group 1) .....	38
Deck Component Fasteners (Group 1) .....	40
Deck Components (Group 2) .....	42
Deck Component Fasteners (Group 2) .....	44
Lift Components .....	46
Lift Component Fasteners .....	48
Spindle Components .....	50
Gearbox Components .....	52
Driveline Components .....	54
<b>INDEX</b> .....	56

---

# INTRODUCTION

---

## TO THE OWNER & OPERATOR

Congratulations on your decision to purchase a NEW HOLLAND Mower. May we recommend you read this manual before operating your new 914A Mower.

Your Mower has been designed to give many years of satisfactory service in grass mowing operations. This mower is not designed to be used for any other purpose. Successful operation and long mower life depends on proper maintenance and correct operating technique.


This Operator's Manual has been printed to provide you with safe operating techniques, proper maintenance procedures, correct unit assembly, and parts identification on your Mower. Please read this manual carefully, following all instructions. Keep this manual handy for future reference.

All references to right and left, forward or rearward, used in this manual refer to that direction when seated on the tractor seat facing forward.

Should any assistance be required in understanding any section of this manual, contact your NEW HOLLAND Dealer.

## IDENTIFICATION NUMBERS

Locate the Serial Number plate and record the numbers from it on the pictured plate below. Always refer to this information when requesting repair parts or dealer service.

 <b>NEW HOLLAND</b>	
MODEL NO.	SERIAL NO.
<input type="text"/>	<input type="text"/>
COMPONENT	
<input type="text"/>	
<b>NEW HOLLAND NORTH AMERICA, INC.</b> <small>MADE IN U.S.A.</small>	

Contact your NEW HOLLAND Dealer for authorized Service Parts. Substitute repair parts will void the product warranty, and will not meet the standards required for safe operation.

---

# SAFETY PRECAUTIONS

---

***A careful operator is the best operator. Accidents can be avoided by observing certain safety precautions. Read and understand these precautions before operating the Mower. This equipment should be operated only by those who have been trained in its safe use.***

## THE MOWER

Know and understand all mower instructions and Safety Precautions before assembly, service, or operation. Also read and understand all Safety Precautions in the Tractor Operator's Manual.

Keep the tractor and mower in good operating condition at all times.

Always keep all shields and guards securely in place.

Make sure all fastening hardware is properly tightened before operating the tractor and mower.

Keep all Safety Decals clean and free of dirt and grime. Always replace any Safety Decals that become damaged, lost, painted over, or otherwise become illegible. Replace all Safety Decals when repainting the mower.

## MOWER OPERATION

DO NOT permit anyone but the operator to ride on the tractor or mower. There is no safe place on this equipment for passengers.

Clear the area of people, pets, and all visible debris before mowing.

Mow only during daylight hours, or when the area is well lit artificially.

To avoid the possibility of injury from flying debris, NEVER operate the mower raised into the transport position.

Always keep mower discharge directed away from people or animals, which could be injured, and away from objects that could be damaged, by debris thrown by the mowing blades.

Stop and inspect all parts of the mower after striking any foreign object. Repair any damage before resuming mowing operations.

Disengage power to the mower and make sure the area behind the tractor and mower is clear before backing up. Always slow down backing or when turning.

The operator should NEVER leave the tractor seat with the mower blades rotating, with the tractor in motion, or when the tractor engine is running.


Always be alert for vehicle traffic when crossing or mowing near roadways. Avoid bystanders when mowing on or near public facilities.

## THE TRACTOR

Always use an approved Roll Over Protective Structure (ROPS) and Seat Belt for safe operation. Overturning a tractor, without a ROPS, can result in serious injury or death. If your tractor is not equipped with a ROPS and Seat Belt, see your NEW HOLLAND Dealer.

ALWAYS wear the seat belt on ROPS equipped tractors. DO NOT use a seat belt if the tractor ROPS has been removed.

NEVER allow an open flame near the fuel tank or tractor battery.

WHEN YOU SEE THIS SYMBOL  IT MEANS:  
**ATTENTION! BECOME ALERT! YOUR SAFETY IS INVOLVED!**

---

## SAFETY PRECAUTIONS - Continued

---

### OPERATING THE TRACTOR & MOWER

Use the handholds and step platforms when mounting and dismounting the tractor to prevent falling. Always keep steps and platforms clean and free of mud or other debris.

The operator **MUST** remain in the tractor seat at all times while mowing, transporting, or anytime the tractor engine is running.

**NEVER** start the engine while standing beside the tractor. The operator **MUST** sit in the tractor seat when starting the engine.

**NEVER** run the engine in a closed building without adequate ventilation. Exhaust fumes are very dangerous and can cause permanent injury or death.

Use extreme care when operating on slopes to maintain equipment stability.

Keep the tractor in gear when traveling downhill.

Install tractor wheel weights to increase stability when operating on slopes. Consult your **NEW HOLLAND Dealer** on ballasting requirements for your equipment.

To avoid loss of control, and to prevent over-turning the tractor and mower, always mow up and down slopes, never across. **DO NOT** operate on steep slopes.

Always bring the tractor to a complete stop, lower the mower deck to ground contact, disengage power to the mower, set the parking brake, shut off the engine and remove the key, before dismounting from the tractor. **NEVER** park the tractor on an incline.

### SERVICING THE MOWER

Keep the tractor and mower clean. Grease, dry debris and grass build-up can cause fires, damaging the equipment and causing serious injury to yourself or others.

Check for and replace or repair missing, loose, or damaged parts on the mower. A defective mower could cause injury to another operator who is unaware of a potential problem.

To avoid injury, do not clean, adjust, unclog, or service the mower when the engine is running.

Do not work under the raised tractor or mower deck unless it is securely supported by a hoist, floor jack and jackstands.

Make sure all hoists, floor jacks and jackstands are in good working order and have sufficient capacity to support the elevated equipment, before repair, adjustment, or lubrication of the tractor or mower.

Inspect the mowing blade retainer nuts daily, or whenever a blade has been removed. Torque is 110 to 130 ft. lbs. (150-177 N·m). These nuts have right hand threads.

To avoid injury when handling mowing blades, wear leather gloves, or wrap the blades in the area where they will be held.

Do not modify or alter or permit anyone else to modify or alter the mower, or any of its components or operating functions. If in doubt on modifications, see your **NEW HOLLAND Dealer**.

WHEN YOU SEE THIS SYMBOL  IT MEANS:

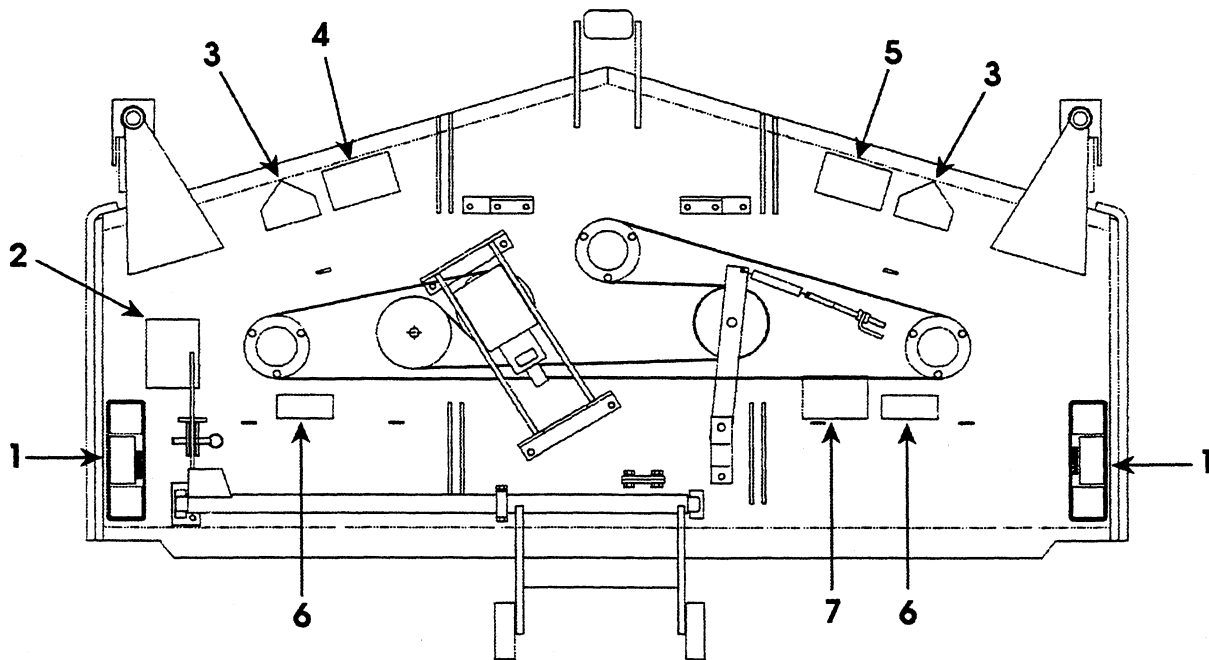
**ATTENTION! BECOME ALERT! YOUR SAFETY IS INVOLVED!**

---

# SAFETY DECALS

---

## DECAL LOCATIONS



## CARE OF SAFETY DECALS

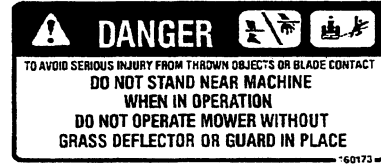
1. Keep safety decals clean and free of dirt and debris.
2. Clean safety decals with mild soap and water and dry with a soft cloth.
3. Replace any damaged, missing, or illegible safety decals with new safety decals obtained from your NEW HOLLAND dealer.
4. If a component with safety decals affixed is to be replaced, make sure new safety decals are attached in the same locations on the replaced component.
5. Install new safety decals by applying on a clean dry surface, working air bubbles out to the edges.

# SAFETY DECALS - Continued

## SAFETY DECAL ILLUSTRATIONS



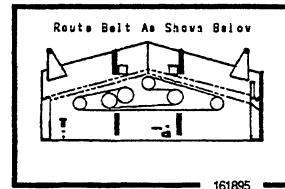
1. AUB160171



5. AUB160173

HAUTER DE COUPE CUTTING HEIGHT	ROUE AVANT FRONT WHEEL	ROUE ARRIERE REAR WHEEL
	38 mm (1-1/2")	C - X
51 mm (2")	D - Y	- 2 -
64 mm (2-1/2")	B - X	- 3 -
76 mm (3")	C - Y	- 4 -
89 mm (3-1/2")	A - X	- 5 -
102 mm (4")	B - Y	- 6 -

2. AUB161894



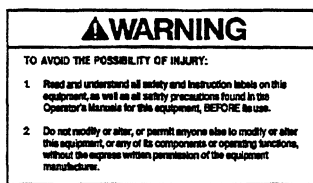
6. AUB161895



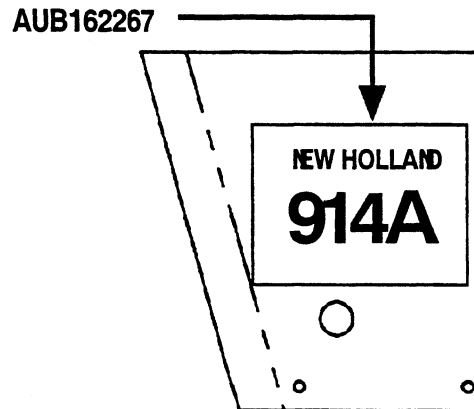
7. AUB160169



3. AUB160172



4. AUB948250



Left Belt Shield



# ASSEMBLY INSTRUCTIONS

## GENERAL INSTRUCTIONS

The 914A mid-mount rear discharge mower can be assembled following the instructions in this section.

All references to right and left, forward or rearward, used in this section refers to that direction when seated in the tractor seat, facing forward.

When mower assembly is complete, check it against the Pre-Delivery Checklist before unit delivery to the customer.

## PRE-ASSEMBLY NOTES

Remove any other rear or mid-mounted implement before proceeding with mower set-up and installation. Locate the tractor on a firm and level surface, near the mower crate and place the lift control lever in the full down position. Shut off the engine and set the parking brake.

Make sure the tractor tires are properly inflated, according to instructions in the Tractor Operator's Manual for tire size and type, before proceeding.

Remove the crate top and all packing ties and insulating material from around the mower and its components. Remove all loose parts and hardware bags and set them aside. Cut the wire corners and remove the sides of the crate.

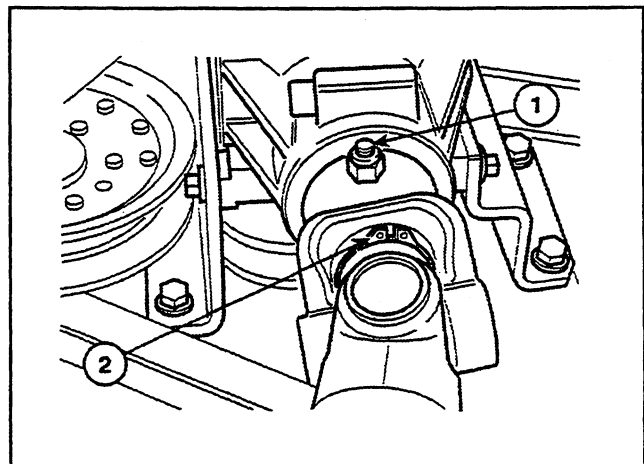
Refer to the Parts Illustration Section of this manual for assistance with specific parts identification and location during mower assembly.

## INSTALLING THE DRIVELINE

1. Slide the bored yoke end of the driveline onto the gearbox input shaft. Using a 90° snap ring plier, install the snap ring.
2. Align the shear bolt hole in the yoke with the cross hole in the input shaft and install a 3/8-16 x 2-3/4 bolt and locknut. The locknut should be snug against the yoke, allowing the bolt to turn easily with a wrench.

**NOTE:** If the driveline should come apart, see information on page 30 for engaging the blind spline in the shaft halves.

3. Install the rear wheels with 1/2-13 x 3-1/2 bolts and flat washers and retain with 1/2" locknuts. Install the front roller with a 1/2 x 5 clevis pin and 1/8 x 1-1/2 cotter pin. See page 42.
4. Carefully roll the mower off the pallet and position it in front of the tractor. However, if there is an overhead hoist available, it is much easier to raise the front of the tractor and roll the mower deck under the tractor from the front.



1. Shear Bolt    2. Snap Ring

**INSTALLING THE LIFT SYSTEM**

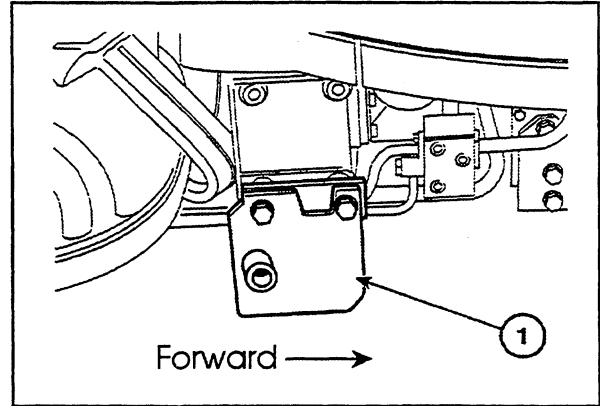
1. Install the front hanger plates as shown with M16-2.0 x 60 bolts and lockwashers. Note how the notched corners are positioned. The plate with the clearance cutout is used on the left side. Half inch and three eighths inch thick spacers are used between the hanger plates and tractor housing as follows.

**RIGHT SIDE**

- Mower Only - One 1/2" & One 3/8"
- Remote Hydraulics Only - One 1/2"
- Hydraulics & Loader - No Spacers

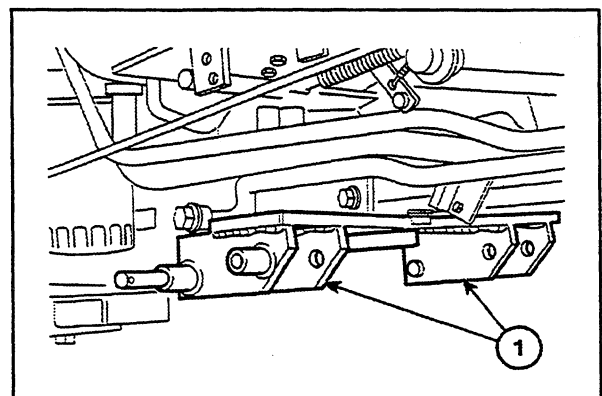
**LEFT SIDE**

- Mower Only - One 1/2" & One 3/8"
- Remote Hydraulics Only - One 1/2" & One 3/8"
- Hydraulics & Loader - One 3/8"



**1. Hanger Plate (RH illustrated)**

2. Position the mid lift frame as shown and install it to the transmission tunnel with M14-1.5 x 35 bolts and lockwashers.



**1. Mid-Lift Frame**

Thank you so much for reading.  
Please click the “Buy Now!”  
button below to download the  
complete manual.



After you pay.

You can download the most  
perfect and complete manual in  
the world immediately.

Our support email:

[ebooklibonline@outlook.com](mailto:ebooklibonline@outlook.com)