

# OPERATOR'S MANUAL

---

## **MegaCutter™ 530** Tractor Mounted Disc Mower-Conditioner

**Part number 47419733**

2<sup>nd</sup> edition English

December 2012

*Replaces part number 84564025*



# Contents

---

## 1 GENERAL INFORMATION

Note to the owner.....	1-1
Intended use statement .....	1-2
Product Identification Number (PIN).....	1-3
Electro-Magnetic Compatibility (EMC) .....	1-4

## 2 SAFETY INFORMATION

Precautionary statements .....	2-1
General safety .....	2-2
Ecology and the environment .....	2-6
Safety signs .....	2-7
Road travel signs and decals.....	2-23

## 3 CONTROLS/INSTRUMENTS

### CONTROL BOX

Control box operation.....	3-1
----------------------------	-----

## 4 OPERATING INSTRUCTIONS

### COMMISSIONING THE UNIT

Initial field settings quick-reference.....	4-1
Before operating.....	4-3
Field operation.....	4-4
Attaching the header .....	4-5
Shorten Power Take-Off (PTO) shaft .....	4-7
Connecting the hydraulics .....	4-9
Connecting the electrical system.....	4-10
Connecting the Power Take-Off (PTO).....	4-11
Burnishing the slip clutch .....	4-11
Header flotation.....	4-13
Remove header .....	4-14

### STARTING THE UNIT

First start-up of machine.....	4-17
--------------------------------	------

## 5 TRANSPORT OPERATIONS

### ROAD TRANSPORT

Transport on public roads .....	5-1
Speed Indicator Symbol (SIS).....	5-3
Machine lights .....	5-3

---

## PREPARING FOR ROAD TRANSPORT

Machine transport position .....	5-4
Machine field position .....	5-6

## 6 WORKING OPERATIONS

### GENERAL INFORMATION

Theory of operation .....	6-1
End-of-field turns .....	6-3
Single unit operation .....	6-4
Swathing .....	6-6
Conditioning hood adjustment .....	6-8
Flail rotor speed adjustment .....	6-9
Cutting height .....	6-10
Cutterbar breakaway mechanism .....	6-11

## 7 MAINTENANCE

### GENERAL INFORMATION

General information .....	7-1
Consumables .....	7-2
Torque - Minimum tightening torques for normal assembly .....	7-3
Torque - Standard torque data for hydraulics .....	7-6

### MAINTENANCE CHART

Maintenance chart .....	7-7
-------------------------	-----

#### Every 8 hours or daily

Grease flail rotor bearings .....	7-8
Grease Power Take-Off (PTO) shaft .....	7-9
Check cutterbar oil level .....	7-10
Cutterbar inspection .....	7-12
Inspect flails .....	7-13

#### First 10 hours

Change main gear oil .....	7-14
Change bevel gear oil .....	7-15

#### Every 40 hours or weekly

Grease bottom connecting link .....	7-16
Grease top connecting link .....	7-17
Grease arm bearings .....	7-18
Grease right-hand arm .....	7-18
Grease left-hand arm .....	7-19
Grease universal joint .....	7-20

---

Grease lifting cylinder .....	7-20
-------------------------------	------

## Every 80 hours or biweekly

Grease spring bracket .....	7-21
Check bevel gear oil level .....	7-21
Check main gear oil level .....	7-22

## Seasonally

Change main gear oil .....	7-23
Change bevel gear oil .....	7-24
Change cutterbar oil - Attached to the machine .....	7-25

## As required

Clean conditioning hood .....	7-30
Replace flails .....	7-31
Replace knives .....	7-32
Replace V-belts .....	7-33
Replace slip clutch .....	7-34
Replace control box fuse .....	7-35

## STORAGE

Header storing .....	7-36
----------------------	------

## 8 TROUBLESHOOTING

### SYMPTOM(S)

Electrical System .....	8-1
Hydraulic system .....	8-1
Cutterbar .....	8-1
Operation .....	8-2
Power Take-Off (PTO) .....	8-2

## 9 SPECIFICATIONS

General specification .....	9-1
-----------------------------	-----

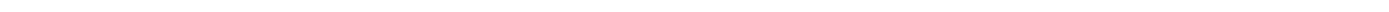
## 10 ACCESSORIES

Flip-over spreading section .....	10-1
High speed rotor kit .....	10-1
Crop dividers .....	10-1
Skid shoes .....	10-2
20-Spline Power Take-Off (PTO) yoke .....	10-2
Front header lift control kit .....	10-3
Closed Center Load Sensing (CCLS) hydraulic conversion kit .....	10-4

---

## 11 FORMS AND DECLARATIONS

Delivery report - Owner copy - Owner Copy .....	11-3
Delivery report - Dealer copy - Dealer Copy .....	11-4
Service record - 1st 50 hour, Owner copy - 1st 50 Hour, Customer Copy .....	11-5
Service record - 1st 50 hour, Dealer copy - 1st 50 Hour, Customer Copy .....	11-6



# 1 - GENERAL INFORMATION

## Note to the owner

This manual contains information concerning the adjustment and maintenance of your new equipment. You have purchased a dependable machine, but only by proper care and operation can you expect to receive the performance and long service built into this equipment. Please have all operators read this manual carefully and keep it available for ready reference.

Your NEW HOLLAND AGRICULTURE dealer will instruct you in the general operation of your new equipment. (Refer to **11-3** in this manual). Your authorized NEW HOLLAND AGRICULTURE dealer has a staff of factory-trained service technicians that will be glad to answer any questions that may arise regarding the operation of your machine. New Holland Top Service is also available. Call **1-866-NEWHLND (1-866-639-4563)** or send an email to: **na.topservice@cnh.com** .

Your NEW HOLLAND AGRICULTURE dealer carries a complete line of genuine NEW HOLLAND AGRICULTURE service parts. These parts are manufactured and carefully inspected to ensure high quality and accurate fitting of any necessary replacement parts. Be prepared to give your dealer the model and product identification number of your new equipment when ordering parts. Locate these numbers now and record them below. Refer to **1-3** in this manual for the location of the model and product identification numbers of your machine.

**Please record the following information:**

**Model**

---

**Product Identification Number (PIN)**


---

**Date purchased**

---

**Header width (as applicable)**

---

	<p>This is the safety alert symbol. It is used with and without signal words to alert you to potential personal injury hazards. Obey all safety messages that follow this symbol to avoid possible death or injury.</p>
---	---

### **⚠ WARNING**

**Illustrations in this manual may show protective shielding open or removed to better illustrate a particular feature or adjustment.  
Replace all shields before operating the machine.  
Failure to comply could result in death or serious injury.**

W0012A

## Improvements

CNH America LLC is continually striving to improve its products. We reserve the right to make improvements or changes when it becomes practical and possible to do so, without incurring any obligation to make changes or additions to the equipment sold previously.

## Intended use statement

The NEW HOLLAND AGRICULTURE **MegaCutter™ 530** rear-mounted disc mower-conditioner is intended for use in common grass and cereal crops. The unit has a flail-style conditioner and is capable of laying crop in even windrows, or leaving an even spread of cut crop material across the cutting width. It is intended for use in conjunction with the NEW HOLLAND AGRICULTURE **MegaCutter™ 512** front-mounted mower-conditioner.

### Prohibited usage

Do not use this machine for any of the following:

- Cutting grass in park facilities and lawns
- Cutting grass on the sides of public roadways
- Harvesting corn
- Clearing forest or densely wooded areas

No parts or attachments should be fitted to this machine which have not been released by NEW HOLLAND AGRICULTURE.

**NOTE:** *DO NOT use this machine for any purpose or in any manner other than as described in the manual, decals, or other product safety information provided with the machine. These materials define the machine's intended use.*

**NOTE:** *Use only approved accessories and attachments designed for your machine. Consult your NEW HOLLAND AGRICULTURE dealer for changes, additions, or modifications that may be required for your machine. Do not make any unauthorized modification to your machine.*

**NOTE:** *All persons who will be operating this machine shall possess a valid local vehicle operating permit and/or other applicable local age work permits.*

### Machine overview

The machine is coupled to the tractor's rear three-point hitch and can be raised and lowered using the tractor's hydraulic system. The unit uses a heavy spring-style suspension that allows the unit to follow ground contours and produce a uniform cut even in rough terrain.

The machine's cutting discs are equipped with durable, reversible knives which have a high cutting capacity when used at a high speed of rotation, even for difficult crops.

The machine is equipped with flail-style rotary conditioners and adjustable conditioning hoods that facilitate varying levels of crop conditioning.

The mowing speed and performance may depend on a number of limiting parameters, such as weather and terrain conditions, crop variety and maturity. Though the machine is designed to perform in most crops and conditions, there may be a number of combinations of the above parameters, for which there is a severe degradation of performance of the machine or systems thereof. If you notice degradation of performance, contact your NEW HOLLAND AGRICULTURE dealer for assistance. They may have useful information for improvements, or a kit may be available to enhance performance.

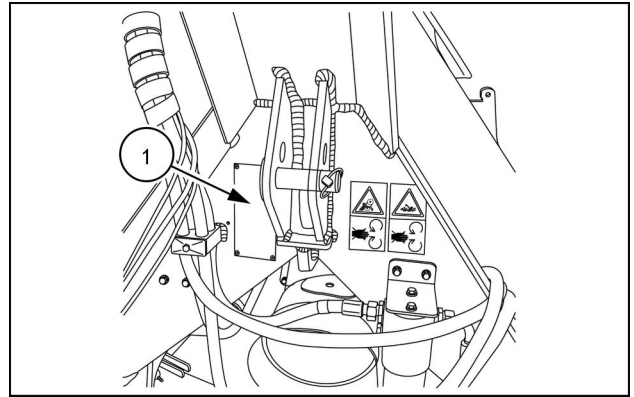
All of the adjustments detailed in this manual will be preliminary in nature. Expect to make minor adjustments to fit your working conditions once the machine is put into service.

## Product Identification Number (PIN)

The Product Identification Number (PIN) plate (1) on the **Megacutter™ 530** is located just to the right-hand side of the top link on the front of the main frame.

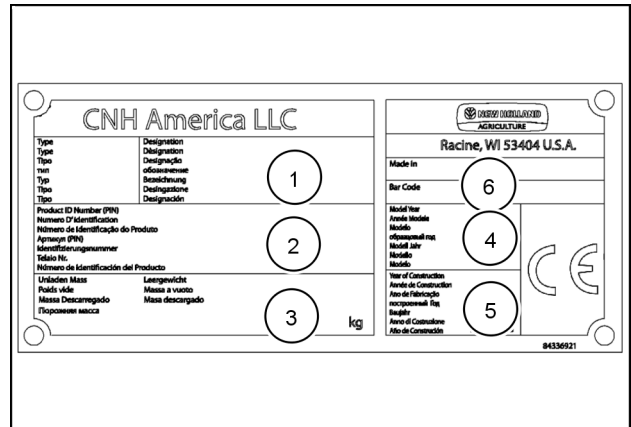
Give your NEW HOLLAND AGRICULTURE dealer the model and PIN of the header when ordering parts. Always order genuine parts from your authorized NEW HOLLAND AGRICULTURE dealer.

Record the PIN in the space provided at the front of this manual.



NHIL12HT00028AA 1

(1) Model
(2) PIN
(3) Weight
(4) Model year
(5) Year of construction
(6) Country of origin



NHIL12HT00619AA 2



## Electro-Magnetic Compatibility (EMC)

Interference may arise as a result of add-on equipment which may not necessarily meet the required standards. As such interference can result in serious malfunction of the unit and/or create unsafe situations, you must observe the following:

- The maximum power of emission equipment (radio, telephones, etc.) must not exceed the limits imposed by the national authorities of the country where you use the machine.
- The electromagnetic field generated by the add-on system should not exceed **24 V/m** at any time and at any location in the proximity of electronic components.
- The add-on equipment must not interfere with the functioning of the on board electronics. Failure to comply with these rules will render the NEW HOLLAND AGRICULTURE warranty null and void.

## 2 - SAFETY INFORMATION

### Precautionary statements

#### Personal safety



This is the safety alert symbol. It is used to alert you to potential personal injury hazards. Obey all safety messages that follow this symbol to avoid possible death or injury.

Throughout this manual and on machine safety signs, you will find the signal words DANGER, WARNING, and CAUTION followed by special instructions. These precautions are intended for the personal safety of you and those working with you.

Read and understand all the safety messages in this manual before you operate or service the machine.

**!** DANGER indicates a hazardous situation that, if not avoided, will result in death or serious injury. The color associated with DANGER is RED.

**!** WARNING indicates a hazardous situation that, if not avoided, could result in death or serious injury. The color associated with WARNING is ORANGE.

**!** CAUTION indicates a hazardous situation that, if not avoided, could result in minor or moderate injury. The color associated with CAUTION is YELLOW.

### **FAILURE TO FOLLOW DANGER, WARNING, AND CAUTION MESSAGES COULD RESULT IN DEATH OR SERIOUS INJURY.**

#### Machine safety

**NOTICE:** Notice indicates a situation that, if not avoided, could result in machine damage or property damage. The color associated with Notice is BLUE.

Throughout this manual you will find the signal word Notice followed by special instructions to prevent machine damage or property damage. The word Notice is used to address practices not related to personal safety.

#### Information

**NOTE:** Note indicates additional information that clarifies steps, procedures, or other information in this manual.

Throughout this manual you will find the word Note followed by additional information about a step, procedure, or other information in the manual. The word Note is not intended to address personal safety or property damage.

## General safety

### General safety rules

Use caution when operating the machine on slopes. Raised equipment, full tanks and other loads will change the center of gravity of the machine. The machine can tip or roll over when near ditches and embankments or uneven surfaces.

Never operate the machine under the influence of alcohol, drugs, or while otherwise impaired.

Pay attention to overhead power lines and hanging obstacles. High voltage lines may require significant clearance for safety.

Keep clear of moving parts. Loose clothing, jewelry, watches, long hair, and other loose or hanging items can become entangled in moving parts.

Wear protective equipment when appropriate.

DO NOT attempt to remove material from any part of the machine while it is being operated or components are in motion.

Make sure all guards and shields are in good condition and properly installed before operating the machine. Never operate the machine with shields removed. Always close access doors or panels before operating the machine.

A person or pet within the operating area of a machine can be struck or crushed by the machine or its equipment. DO NOT allow anyone to enter the work area.

Raised equipment and/or loads can fall unexpectedly and crush persons underneath. Never allow anyone to enter the area underneath raised equipment during operation.

Always keep windows, mirrors, all lighting, and Slow Moving Vehicle (SMV) emblem clean to provide the best possible visibility while operating the machine.

### Hydraulic system safety

Hydraulic oil or diesel fuel leaking under pressure can penetrate the skin, causing serious injury or infection.

- DO NOT use your hand to check for leaks. Use a piece of cardboard or paper.
- Stop engine, remove key and relieve the pressure before connecting or disconnecting fluid lines.
- Make sure all components are in good condition and tighten all connections before starting the engine or pressurizing the system.
- If hydraulic fluid or diesel fuel penetrates the skin, seek medical attention immediately.

Operate controls only when seated in the operator's seat, except for those controls expressly intended for use from other locations.

This machine is intended for use with a tractor having an enclosed cab ONLY.

Before leaving the tractor's cab:

1. Park machine on a firm level surface.
2. Put all controls in neutral or park lock position.
3. Engage park brake, use wheel chocks if required.
4. Lower all hydraulic equipment — Implements, header, etc.
5. Turn off engine and remove key.

When, due to exceptional circumstances, you would decide to keep the tractor running after leaving the operator's station, then the following precautions must be followed:

1. Bring the engine to low idle speed.
2. Disengage all drive systems.

#### 3. **WARNING**

**Some components may continue to run down after disengaging drive systems. Make sure all drive systems are fully disengaged. Failure to comply could result in death or serious injury.**

W0113A

Shift the transmission into neutral.

4. Apply the parking brake.

- Continuous long term contact with hydraulic fluid may cause skin cancer. Avoid long term contact and wash the skin promptly with soap and water.

The hydraulic hoses and fittings on your machine meet engineering specifications for the particular function. When replacing damaged, blown or worn hoses or fittings, use only manufacturer authorized service parts.

Care in hydraulic hose installation is a must:

- Make sure pressure is relieved before starting installation procedure.

- DO NOT kink or twist a hose, failure may occur.
- Properly route the hose.
- Remove air from the hydraulic system after installing any hydraulic component.

Periodically check hydraulic system for leaks or damage. check for:

- Leaks at hose fitting or in hose.
- Damaged hoses and/or fittings.
- Kinked, crushed, flattened, hard blistered, heat cracked, charred, twisted, soft or loose covered hoses.
- Corroded or damaged fittings.
- Leaking ports.
- Excessive dirt and debris around hoses and/or fittings.
- Damaged or missing hose retaining clamps, guards, shields, etc.

DO NOT stand on or use a hose as a step. DO NOT pull or apply external forces to the hose. The hose may fail and cause injury.

Keep all persons away from the working area. Mechanisms controlled by fluid power can become hazardous if a hose fails. Lifted mechanisms can fall to the ground, machine steering may fail, etc.

Stay clear of a pressurized hose assembly that has blown apart. Hose fittings can be thrown off at high speed and a loose hose can whip around with great force.

Hydraulic fluid can reach high temperatures. Allow fluid to cool before servicing the system.

Escaping fluid under pressure may form a mist or fine spray which can flash or explode upon contact with an ignition source

Vibration can reduce hose service life. Make sure all retaining clamps and/or devices are secured.

Environmental conditions can cause hose and fittings to deteriorate. Inspect hydraulic hoses periodically. Replace worn or damaged hoses and fittings.

### **General maintenance safety**

Keep area used for servicing the machine clean and dry. Clean up spilled fluids.

Service machine on a firm level surface.

Install guards and shields after servicing the machine.

Close all access doors and install all panels after servicing the machine.

Do not attempt to clean, lubricate, clear obstructions or make adjustments to the machine while it is in motion or while the engine is running.

Always make sure working area is clear of tools, parts, other persons and pets before you start operating the machine.

Unsupported hydraulic cylinders can lose pressure and drop the equipment causing a crushing hazard. Do not leave equipment in a raised position while parked or during service, unless securely supported.

Jack or lift the machine only at jack or lift points indicated in this manual.

Stop the engine, remove key and relieve pressure before disconnecting or connecting fluid lines.

Stop the engine and remove key before disconnecting or connecting electrical connections.

Replace damaged or worn tubes, hoses, electrical wiring, etc.

Engine, transmission, exhaust components, and hydraulic lines may become hot during operation. Take care when servicing such components. Allow surfaces to cool before handling or disconnecting hot components. Wear protective equipment when appropriate.

When welding, follow the instructions in the manual. Always disconnect the battery before welding on the machine. Always wash your hands after handling battery components.

Be careful when cleaning with high pressure cleaning equipment. Do not clean bearings, hydraulic hoses, plastic components, electrical control boxes and electrical equipment with high-pressure cleaning equipment. By cleaning with low water pressure you will protect sensitive equipment on the machine. Using high water pressure to clean could damage vital parts of the machine.

## **Driving on public roads and general transportation safety**

Comply with local laws and regulations.

Use appropriate lighting to meet local regulations.

Make sure SMV emblem is visible.

Make sure brake pedal latch is engaged. Brake pedals must be locked together for road travel.

Use safety chains for trailed equipment when provided with machine or equipment.

Lift implements and attachments high enough above ground to prevent accidental contact with road.

When transporting equipment or machine on a transport trailer, make sure it is properly secured. Be sure the

SMV on the equipment or machine is covered while being transported on a trailer.

Be aware of overhead structures or power lines and make sure the machine and/or attachments can pass safely under.

Travel speed should be such that complete control and machine stability is maintained at all times.

Slow down and signal before turning.

Pull over to allow faster traffic to pass.

Follow correct towing procedure for equipment with or without brakes.

## **Fire and explosion prevention**

Fuel or oil leaked or spills on hot surfaces or electrical components can cause a fire.

Crop materials, trash, debris, bird nests, or flammable material can ignite on hot surfaces.

Always have a fire extinguisher on or near the machine.

Make sure the fire extinguisher(s) is maintained and serviced according to the manufacturer's instructions.

At least once each day and at the end of the day remove all trash and debris from the machine especially around hot components such as engine, transmission, exhaust, battery, etc. More frequent cleaning of your machine may be necessary depending on the operating environment and conditions.

At least once each day, remove debris accumulation around moving components such as bearings, pulleys,

belts, gears, cleaning fan, etc. More frequent cleaning of your machine may be necessary depending on the operating environment and conditions.

Inspect the electrical system for loose connections or frayed insulation. Repair or replace loose or damaged parts.

Do not store oily rags or other flammable material on the machine.

Do not weld or flame cut any items that contain flammable material. Clean items thoroughly with non-flammable solvents before welding or flame-cutting.

Do not expose the machine to flames, burning brush, or explosives.

Promptly investigate any unusual smells or odors that may occur during operation of the machine.

## **Power Take-Off (PTO)**

Power Take-Off (PTO) driven machinery can cause death or serious injury. Before working on or near the PTO shaft and before servicing or clearing the driven machine, put the PTO lever in the disengage position, stop the engine, and remove the key.

Never use a spline adapter:

- Match the right tractor PTO spline and speed with the PTO drive shaft provided with an implement. This will assure proper geometry and operating speed.
- Never operate **540 RPM** implements at **1000 RPM**.
- Never operate **1000 RPM** implements at **540 RPM**.
- Use of PTO adapters will void the warranty of the drive shaft, and the PTO drive train of the machine and the implement.

Whenever a PTO is in operation, a guard must be in place to prevent death or injury to the operator or bystanders.

When doing stationary PTO work, keep clear of all moving parts and make sure appropriate guards are in place.

Thank you so much for reading.  
Please click the “Buy Now!”  
button below to download the  
complete manual.



After you pay.

You can download the most  
perfect and complete manual in  
the world immediately.

Our support email:

[ebooklibonline@outlook.com](mailto:ebooklibonline@outlook.com)