

**AFS® Pro 700**  
AFS Field Performer  
Large Tractors  
Trip Computer  
Precision Farming

**SOFTWARE OPERATING GUIDE**

*Software Version 28.\**

**Part number 47426391**

1<sup>st</sup> edition English

December 2012



# Contents

---

## 1 GENERAL

Manual scope.....	1-1
-------------------	-----

## 2 ICONS AND WINDOWS

### VEHICLE ICONS

Status and warning icons.....	2-1
-------------------------------	-----

### PERFORMANCE AND VEHICLE WINDOWS

Left-hand area.....	2-2
"Home" screen.....	2-3
Performance windows.....	2-5
Vehicle and "Framework" application windows.....	2-17

## 3 SETUP

### REMOTE VALVES

Introduction.....	3-1
Variable flow controls.....	3-1
Remote valve timers.....	3-5
Valve locks.....	3-9

### IMPLEMENT AND HITCH SETTINGS

Introduction.....	3-11
"Implement Setup" screen.....	3-11
"Hitch Notebook" screen.....	3-18

### TRACTOR SETUP

Introduction.....	3-26
"Driveline" screen.....	3-26
"Settings" screen (wheel slippage reporting).....	3-29
"Auto PTO" screen.....	3-30

## 4 OPERATION

### "PERFORMANCE" SCREENS

Introduction.....	4-1
"Productivity" screen.....	4-4
"Perform Instant" screen.....	4-8
"Fuel Range" screen.....	4-9
"Perform Overall" screen.....	4-10
"Summary Data" screens.....	4-12

### HEADLAND TURNING SEQUENCES

---

Introduction .....	4-17
Record a sequence .....	4-18
Download a sequence .....	4-21
Play a sequence .....	4-24
Manage sequences .....	4-26

## SERVICE REMINDERS

Maintenance schedule .....	4-28
Service reminder operation .....	4-31
Sharing the display between vehicles .....	4-35

# 1 - GENERAL

## Manual scope

This manual covers the AFS Field Performer functions for the “Large Tractors,” “Trip Computer,” and “Precision Farming” applications. The manual assumes that you have read and understood the contents of the display manual in preparation for this manual.

This application manual is organized as follows:

- Chapter 2 explains the control and reporting windows for monitoring productivity and performance during crop production.
- Chapter 3 explains how to use software features for:
  - The remote valves
  - The rear hitch
  - Automatic Productivity Management (APM)
  - Auto-PTO
- Chapter 4 explains how to:
  - Monitor productivity and performance
  - Use the electronic End of Row (EOR) system
  - Use the service and maintenance features



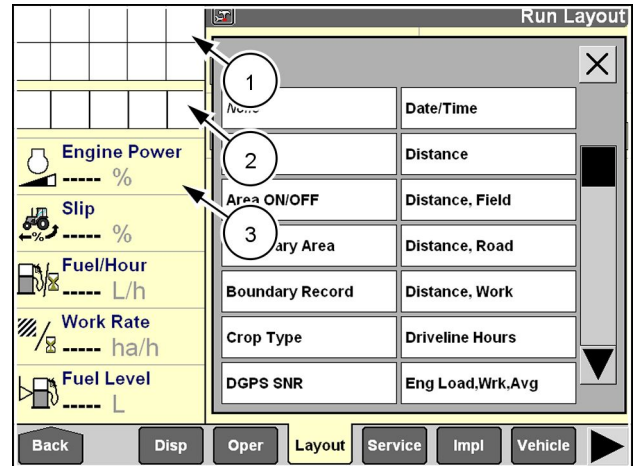
## 2 - ICONS AND WINDOWS

### VEHICLE ICONS

#### Status and warning icons

The left-hand area is visible on all screens and is split into three areas for your tractor:

- The status and warning icon area (1)
- The horizontal sequence bar that is used by the electronic End Of Row (EOR) system (2) (see 4-17 for information on this feature)
- The window area that provides operator-selected performance information, productivity information, or maps (3)



RCIL09DSP064BAG 1

Six status icons are specific to the “Large Tractors” application and display in the status and warning icon area when appropriate.

	Implement position icons show the current position of the hitch-mounted or towed implement. The up arrow indicates that the implement is raised.		The down arrow indicates that the implement is lowered. Implement position is determined by the position of the hitch, the position of the Electro-Hydraulic Remote (EHR) #1 lever, or input from the implement status switch.
	The “Area Control” icon flashes whenever the “Area ON/OFF” window is set to OFF. The operator must turn area control ON to accumulate any area or time data for the current task.		The “Roading” icon displays whenever the operator selects “ON” in the “Road Mode” window to indicate the vehicle is roading to or from the field for the task. The icon disappears whenever the selection in the “Road Mode” window is changed to “Off.”
	Service alert icons inform an operator when scheduled service or maintenance is approaching. The icons count down from 10 hours to 1 hour when a service interval is about to expire.		When service is due, the icon changes to a flashing service wrench. See 4-28 for more information on the icons and the service functions within the “Large Tractors” application.

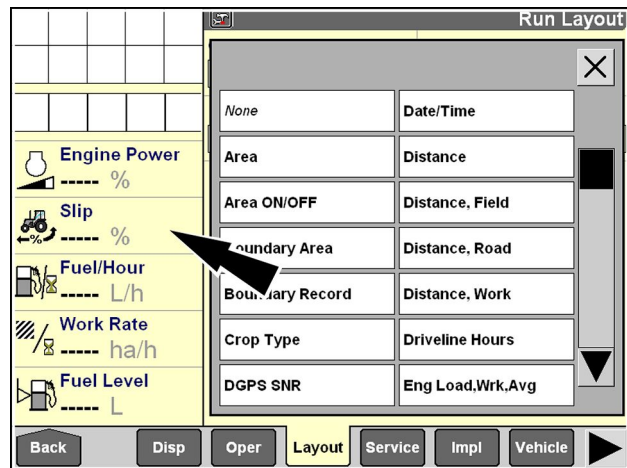
## PERFORMANCE AND VEHICLE WINDOWS

### Left-hand area

The arrangement of the windows in the left-hand area can be changed by the operator.

Any single-column window or map that can be placed on the “Run” screens or the “Summary Data” screens can be placed in the left-hand area.

Refer to the display manual and its explanation of the “Run Layout” screen (Home > Toolbox > Layout) to review window placement in the left-hand area.

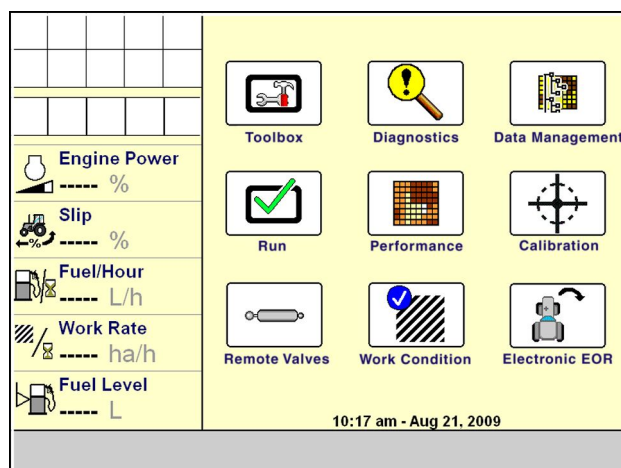


RCIL09DSP064BAG 1

## "Home" screen

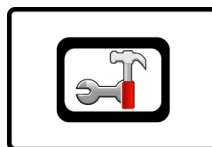
The icons on the "Home" screen organize the screens for all farming applications by function.

Any vehicle-specific software can add components to any function that is represented by these navigation icons.



RCIL09DSP090BAG 1

Press the "Toolbox" icon to access screens for setting display operator preferences, for customizing the "Run" screens, for setting up the GPS receiver, etc. The selections vary with the applications that are installed. The "Toolbox" screens provide the location where shared tools used by other applications can be configured.



Press the "Run" icon to access the six user screens for all applications that are resident on the display. These are the screens that are normally used while operating the equipment.

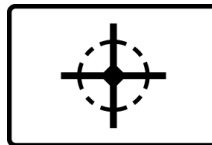


**NOTE:** The names for the "Run" screen navigation icons cannot be edited.

Press the "Diagnostics" icon to access screens for checking software revisions, controller status, specific sensor signals, resource usage, GPS signal status (if equipped), GPS receiver interface (if equipped), and for checking and clearing fault codes.



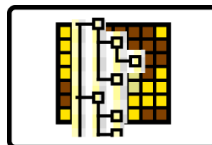
Press the "Calibration" icon to access the screens for vehicle and application-specific calibrations such as distance, area, crop, steering sensor, etc.



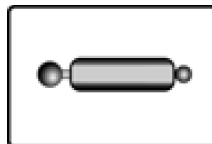
Press the "Performance" icon to access screens for viewing the active data set and analyzing operational results.



Press the "Data Management" icon to access screens for importing data, filtering data, deleting data, and managing map items.



Press the "Remote Valves" icon to access screens for controlling remote valve flow, timers, and locks.







Our support email:

[ebooklibonline@outlook.com](mailto:ebooklibonline@outlook.com)