

OPERATOR'S MANUAL

T8.320

T8.350

T8.380

T8.410

T8.435

Tractor

PIN ZERE04800 and above

Part number 47586286

1st edition English

March 2014



Contents

1 GENERAL INFORMATION

Note to the owner.....	1-1
Engine tampering.....	1-1
Tractor intended use.....	1-2
Electro-magnetic compatibility (EMC).....	1-2
Product identification	1-3
Manual storage	1-6
Machine orientation.....	1-7
Component Identification	1-8
Selective Catalytic Reduction (SCR) system.....	1-11

2 SAFETY INFORMATION

Safety rules and signal word definitions	2-1
Safety rules - General	2-2
Safety rules - General maintenance safety	2-3
Safety rules - Wheels and tires	2-4
Safety rules - Driving on public roads and general transportation safety	2-4
Safety rules - Fire and explosion prevention	2-5
Safety rules - General battery safety	2-5
Safety rules - Instructional seat safety	2-5
Safety rules - Operator presence system	2-6
Safety rules - Power Take-Off (PTO)	2-6
Safety rules - Reflectors and warning lights	2-6
Safety rules - Seat belts	2-6
Safety rules - Roll Over Protective Structure (ROPS)	2-7
Safety rules - Cab protection	2-8
Safety rules - Air conditioning system	2-8
Safety rules - Personal Protective Equipment (PPE)	2-9
Safety rules - Do Not Operate tag	2-9
Safety rules - Hazardous chemicals	2-9
Safety rules - Utility safety	2-9
Safety rules - Electrical storm safety	2-10
Safety rules - Mounting and dismounting	2-10
Safety rules - Working at heights	2-10
Safety rules - Lifting and overhead loads	2-10
Safety rules - Implements, tools and trailers	2-11
Safety rules - Roll over and tip over	2-11
Proposition 65	2-12
Ecology and the environment	2-13
Safety signs	2-14

3 CONTROLS AND INSTRUMENTS

ACCESS TO OPERATOR'S PLATFORM

Tractor access.....	3-1
---------------------	-----

Lower step	3-3
OPERATOR'S SEAT	
Control identification	3-4
INSTRUCTOR'S SEAT	
Overview	3-8
FORWARD CONTROLS	
Steering column	3-9
Front console	3-12
Pedal controls	3-14
LEFT-HAND SIDE CONTROLS	
Pneumatic trailer brake	3-16
RIGHT-HAND SIDE CONTROLS	
Armrest console	3-17
Multi function handle	3-19
Engine speed control	3-24
Control panel	3-25
Remote valve controls	3-32
Joystick	3-33
Rear hitch controls	3-35
Armrest compartment	3-37
Adjusting the armrest console	3-39
REARWARD CONTROLS	
Fender console	3-40
Automatic temperature controls	3-43
Automatic temperature control system	3-46
Ventilation	3-47
OVERHEAD CONTROLS	
Interior lamps	3-49
EXTERIOR CONTROLS	
Rear fender	3-50
Front hitch	3-52
INSTRUMENT CLUSTER	
Overview	3-53
Gauges	3-54
Status and warning icons	3-55
Upper display	3-58
Lower display	3-62
Keypad	3-64
Setup menu	3-66

Rear tire radius chart	3-72
Adjust menu	3-73
Performance features	3-80

4 OPERATING INSTRUCTIONS

COMMISSIONING THE UNIT

Engine - Safety rules	4-1
-----------------------------	-----

STARTING THE UNIT

Normal engine starting	4-4
Cold starting aids	4-8
Cold temperature operation	4-10

STOPPING THE UNIT

Stopping the engine	4-12
---------------------------	------

MOVING THE UNIT

FULL POWERSHIFT TRANSMISSION	4-14
Powershift transmission	4-14
Best practices for prolonged transmission life	4-15
Inching pedal and throttle	4-16
Powershift transmission controls	4-17
Upper display - Powershift transmission	4-20
Driving the Powershift vehicle	4-22
Setting default gears	4-27
Ground Speed Management (GSM)	4-29
CONTINUOUSLY VARIABLE TRANSMISSION (CVT)	4-37
Auto Command brake, pedal and throttle operation	4-37
Auto Command controls	4-43
Upper display	4-48
Auto Command operation	4-49
Driving the Auto Command transmission	4-55
Transmission messages	4-60
POWERSHIFT AND CVT TRANSMISSIONS	4-62
Selective Catalytic Reduction (SCR) system	4-62
Mechanical Front Drive (MFD)	4-68
Differential lock system	4-71
Suspended axle	4-73
Ride control	4-78
Engine power boost	4-80
Constant engine speed	4-81
Suspended cab	4-84
Headland management system	4-85

PARKING THE UNIT

Automatic park lock	4-91
---------------------------	------

5 TRANSPORT OPERATIONS

ROAD TRANSPORT

Tractor warning lamps and Slow Moving Vehicle (SMV) symbol	5-1
Wide transport marker light	5-2
Tractor warning lamps	5-4
Safe transport speed	5-5
Implement warning lamps and Slow Moving Vehicle (SMV) symbol	5-6
Safety chain	5-7

SHIPPING TRANSPORT

Securing the tractor for shipping	5-8
---	-----

RECOVERY TRANSPORT

Safety rules	5-9
Towing the tractor	5-10

6 WORKING OPERATIONS

GENERAL INFORMATION

Overview	6-1
----------------	-----

REAR POWER TAKE-OFF (PTO)

Safety rules	6-2
Connecting the Power Take-Off (PTO)	6-5
Interchangeable Power Take-Off (PTO) shaft	6-6
Rear Power Take-Off (PTO) operation	6-12
Power Take-Off (PTO) fender switch operation	6-16
Auto Power Take-Off (PTO) operation	6-17

FRONT POWER TAKE-OFF (PTO)

Overview	6-20
Front Power Take-Off (PTO) operation	6-21

REAR HITCH

Identification	6-24
Link adjustment	6-25
Hitch high clearance adjustment	6-29
Hydraulic links	6-32
Sway limiter adjustment	6-34
Lower link block adjustment	6-35
Mechanical float adjustment	6-37
Hitch quick coupler - Category III/IIIN	6-38
Hitch quick coupler - Category IVN	6-43
Hitch operation	6-47
Hitch remote switch operation	6-52
Position control operation	6-53
Load control operation	6-55

Slip control operation	6-57
Hitch set point	6-59

FRONT HITCH

Overview	6-61
Front hitch operation	6-61

DRAWBARS AND TOWING ATTACHMENTS

Safety rules	6-68
Drawbar capacity/position	6-69
Adjusting the drawbar	6-73

AUXILIARY CONNECTIONS

Auxiliary power and lighting	6-75
Cab power connections	6-77
Radar connection	6-78
Implement ISOBUS connector	6-79

HYDRAULIC REMOTE CONTROL VALVES

Valve couplers and connections	6-80
Motor return circuit	6-83
Power beyond circuit	6-84
Flow capacity	6-85
Hydraulic transport lock	6-86
Operating the controls	6-87
Remote valve display screens	6-88
Remote hydraulic auto mode	6-91
Auto depth control	6-93
Joystick operation	6-95

BALLASTING THE TRACTOR

Guidelines	6-99
Tire load and inflation charts	6-109
Weights, cast metal	6-121
Wheel slip and power hop performance	6-135

MECHANICAL FRONT DRIVE (MFD) AXLES

Front axle identification	6-138
Tire combinations and tread positions	6-139
Steering and oscillation stops	6-146
Tread and fender settings - Class 4.75 and 5.0 fixed front axles	6-148
Tread and fender settings - Class 4.75 and 5.0 saddle suspended front axles ..	6-156
Front wheel fenders - Narrow fenders, fixed or saddle suspended	6-163
Front wheel fenders - Wide fenders, fixed or saddle suspended	6-168

REAR AXLE

Rear wheel installation	6-173
Rear wheel tread settings	6-176
Dual/triple wheel setup for 508 mm (20 in)/559 mm (22 in) row spacing.....	6-184
Adjustable rear wheel	6-191

7 MAINTENANCE

GENERAL INFORMATION

Safety rules	7-1
Dealer service and parts	7-2
Maintenance guidelines	7-2
Opening the hood	7-3
Closing the hood	7-5
Filling the fuel tank	7-6
Filling the Diesel Exhaust Fluid (DEF)/AdBlue® tank	7-8
Battery disconnect switch	7-9
Battery access and service	7-10
Tire and rim service	7-11
Tractor jacking points	7-13
Capacities	7-15
Consumables - Engine oil	7-16
Consumables - Transmission/hydraulic system fluid	7-17
Consumables - Diesel fuel	7-17
Consumables - Biodiesel fuels	7-18
Consumables - Diesel exhaust fluid (DEF)/AdBlue®	7-20
Consumables - Coolant solution for Tier 4b engines	7-22
Electrical component location	7-23
Lamps and bulbs	7-29
Maintenance chart notes	7-29

MAINTENANCE CHART

Maintenance Chart	7-30
-------------------------	------

At warning message display

Air filter service icon/message	7-32
Water in fuel message	7-35
Transmission oil filter switch	7-36
Hydraulic oil filter switch	7-39

First 10 to 50 hours

Wheel bolt torque	7-42
Weight bolt torque	7-44
Differential and planetary oil	7-44

Every 10 hours or daily

Engine oil level	7-45
Transmission oil level	7-45

Engine coolant level	7-46
Air reservoir	7-46
Rear hitch and front axle	7-46

Every 50 hours or weekly

Engine auxiliary fuel filter	7-47
------------------------------------	------

Every 100 hours

Front hitch	7-48
Front Power Take-Off (PTO) drive shaft	7-50

Every 300 hours

Battery water level (Note E)	7-51
Engine air intake and exhaust hoses	7-53
Engine coolant level - deaeration tank	7-55
Wheel bolt torque	7-56
Weight bolt torque	7-57
Front axle (Note A)	7-58
Rear hitch (Note A)	7-60
Fuel tank	7-62
Differential and planetary oil level (Note B)	7-63
Transmission oil pressure	7-64
Front Power Take-Off (PTO) oil level	7-65

Every 400 hours

Cab air filter	7-66
----------------------	------

Every 600 hours

Engine oil and filter	7-69
Engine coolant antifreeze protection	7-72
Engine coolant hoses and clamps	7-72
Engine fuel filter	7-74
Engine auxiliary fuel filter	7-77
Fuel system bleeding	7-78
Changeable Power Take-Off (PTO) internal splines	7-79
Diesel Exhaust Fluid (DEF)/AdBlue® in-line filter	7-80
Front Power Take-Off (PTO) oil and filter	7-81
Engine air precleaner	7-83

Every 1000 hours or annually

Pneumatic brake system dryer	7-84
------------------------------------	------

Every 1200 hours or annually

Differential and planetary oil	7-85
Engine air filters	7-89

Every 1500 hours

Transmission oil	7-92
Hydraulic oil filter	7-95
Transmission oil filter	7-96
Engine crankcase filter	7-97

Every 3000 hours

Engine valve adjustment (Note C).....	7-101
---------------------------------------	-------

Every 3600 hours

Diesel Exhaust Fluid (DEF)/AdBlue® supply module filter	7-102
---	-------

Every 4000 hours or every four years

Engine coolant.....	7-105
---------------------	-------

As required

Vehicle fire prevention	7-107
Cab air filter.....	7-108
Grille screen and radiator area	7-111
Fuel tank vent filter	7-112
Transmission clutch and accumulator	7-112
Tire pressure	7-112
Fan belt.....	7-113
Diesel Exhaust Fluid (DEF)/AdBlue® tank	7-119
Remote valve collection bottle.....	7-121
Cab fabric and carpet.....	7-122
Seat belt	7-122

STORAGE

Preparing for storage	7-123
Removal from storage	7-124

ELECTRICAL SYSTEM

Radio or audio system.....	7-125
Battery removal and installation	7-126
Auxiliary battery connections	7-128
Headlight	7-129
Flood and work light	7-130
Grille work light	7-130
Fender tail light and warning light	7-131
Roof warning light	7-132
Roof work light.....	7-132
High intensity work light	7-133
Wide transport marker light.....	7-134
Rotating beacon light	7-135
Interior light	7-136

8 TROUBLESHOOTING

ALARM(S)

Display warnings overview	8-1
Display warnings - Level 1	8-2
Display warnings - Level 2	8-4
Display warnings - Level 3	8-7
Display warnings - Level 4	8-9

SYMPTOM(S)

Engine symptoms	8-11
Transmission symptoms.....	8-13
Hydraulic symptoms	8-14
Hitch symptoms	8-15
Brake symptoms.....	8-16
Cab environment symptoms.....	8-16
Electrical power system symptoms.....	8-17

9 SPECIFICATIONS

Engine specifications	9-1
Power train specifications	9-2
Operating speeds.....	9-5
Vehicle dimensions and shipping weight	9-11
Maximum operating weight.....	9-17

10 ACCESSORIES

Farming system displays	10-1
Chemical tank mounting.....	10-2
Loader connection and operation	10-4
Trailer brake connections.....	10-5
General accessories.....	10-7

11 FORMS AND DECLARATIONS

Delivery report - owner copy	11-1
Delivery report - dealer copy	11-2
First service - owner copy	11-4
First service - dealer copy	11-6

1 - GENERAL INFORMATION

Note to the owner

This manual contains important information about the safe operation, adjustment and routine maintenance of your T8. series tractor. The manual is divided into 10 chapters as outlined in the table of contents. Refer to the index at the end of this manual for locating specific items about your tractor.

Do NOT operate or permit anyone to operate or service this machine until you or the other persons have read this manual. Use only trained operators who have demonstrated the ability to operate and service this machine correctly and safely.

This Operator's Manual is to be stored in the manual compartment behind the operator's seat in the vehicle. Make

sure this manual is in good condition. Contact your dealer to obtain additional manuals.

Your NEW HOLLAND dealer will instruct you in the general operation of your new equipment. Your dealer's staff of factory-trained service technicians will be glad to answer any questions that may arise regarding the operation of your machine. They will also provide any after-sales service you may need, and genuine NEW HOLLAND parts, your guarantee of quality and match.

New Holland Top Service is also available. Call 1-866-NEWHLND (1-866-639-4563) or email na.topservice@cnh.com.

Engine tampering

The fuel system, exhaust after-treatment system, and engine on your machine are designed and built to government emissions standards. Tampering by dealers, customers, operators, and users is strictly prohibited by law.

Failure to comply could result in government fines, rework charges, invalid warranty, legal action, and possible con-

fiscation of the machine until rework to original condition is completed. Engine service and/or repairs must be done by a certified technician only!

Tractor intended use

T8. series tractors with standard equipment and authorized attachments, are intended to be used for customary farming, land leveling and related agriculture operations (intended use). Installation of utility (dozer) blades, tile plows, or push bars on the tractor is not recommended. Any tractor damage resulting from the installation and/or use of such equipment is not covered by the tractor warranty.

Consult an authorized dealer or CNH Industrial America LLC on changes, additions or modifications that can be required for this machine to comply with various regulations and safety requirements. Unauthorized modifications will cause serious injury or death. Anyone making such unauthorized modifications is responsible for the consequences.

The tractor is not designed for light/heavy forestry applications; usage is prohibited for forestry applications.

Do not use this machine for any purpose or in any manner other than as described in the manual, decals, or other product safety information provided with the machine. These materials define the machine's intended use.

Use in any other way is considered as contrary to the intended use. The manufacture accepts no liability for any damage or injury resulting from this misuse and these risks must be born solely by the user.

Electro-magnetic compatibility (EMC)

Interference may arise as a result of add-on equipment that may not necessarily meet the required standards. As such interference can result in serious malfunction of the unit and/or create unsafe situations, you must observe the following:



- The maximum power of emission equipment (radio, telephones, etc.) must not exceed the limits imposed by the national authorities of the country where you use the machine
- The electro-magnetic field generated by the add-on system should not exceed **24 V/m** at any time and at any location in the proximity of electronic components
- The add-on equipment must not interfere with the functioning of the on board electronics

Failure to comply with these rules will render the NEW HOLLAND warranty null and void.

Product identification

Tractor model and product identification number

Write your model number, product identification number (PIN) or serial number of major components on the lines provided. If needed, give these numbers to your dealer when you need parts or information for your machine.

 CNH Industrial America LLC Racine, WI 53404 U.S.A. Made In U.S.A.		 MP04
Type 1	EEC Number 2	Product Identification Number 3
• Total Permissible Mass (*): 4 kg • Permissible Front Axle Load (*): 5 kg • Permissible Rear Axle Load (*): 6 kg (*) Depending on the Tires		Permissible Towable Mass: • Unbraked Towable Mass: 7 kg • Independently-Braked Towable Mass: 8 kg • Inertia-Braked Towable Mass: 9 kg • Towable Mass Fitted with an Assisted Braking System: (Hydraulic or Pneumatic): 10 kg

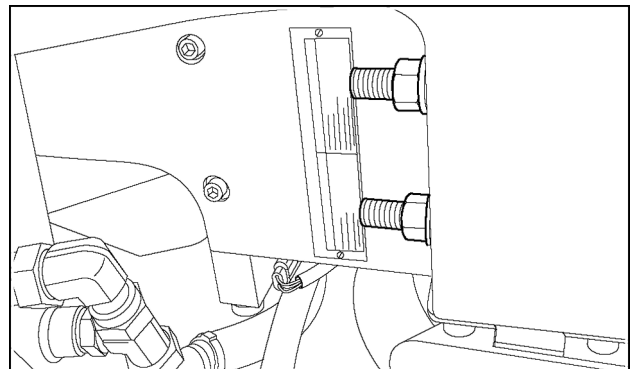
RAIL14TR00787EA 1

1. Type	Permissible towable mass:
2. EEC number	• 7. Unbraked towable mass
3. Product identification number	• 8. Independently brakes towable mass
4. Total permissible mass	• 9. Inertia braked towable mass
5. Permissible front axle load	• 10. Towable mass fitted with an assisted braking system (hydraulic or pneumatic)
6. Permissible rear axle load	

Model :

Serial number:

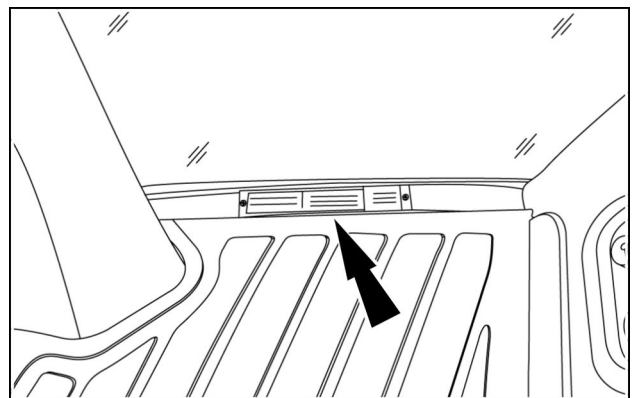
NOTE: Located on right hand front casting. Pin plate may be mounted vertically or horizontally.



RCPH11CCH117AAB 2

Roll Over Protective System (ROPS) serial number

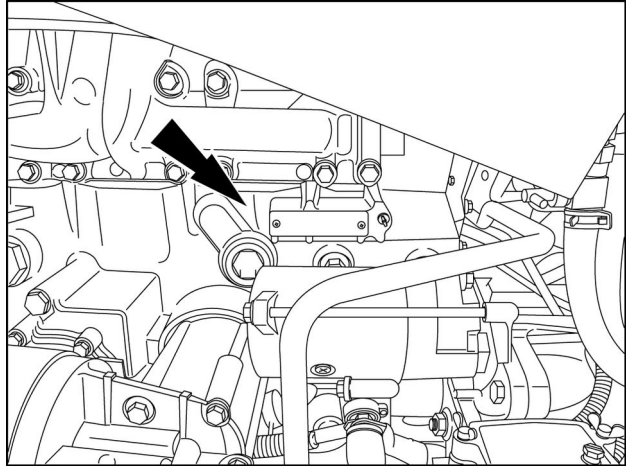
NOTE: Located on the right hand cab floor.



RCPH11CCH014AAB 3

Engine serial number

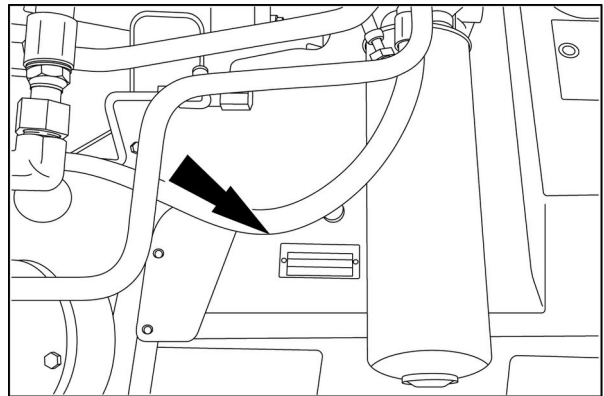
NOTE: Located on the valve cover. The serial number is also etched into the left hand side of the engine block, just below the oil cooler.



RAIL12TR02140AA 4

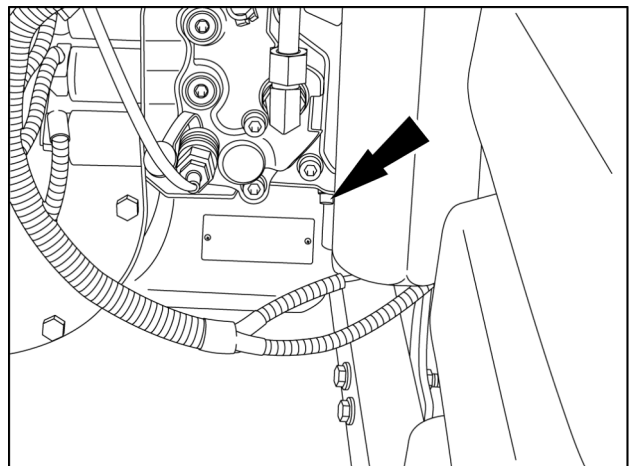
Transmission serial number

NOTE: Located on the right hand side of the transmission to the left of the main hydraulic filter.



RAIL12TR01410AA 5

Powershift transmission

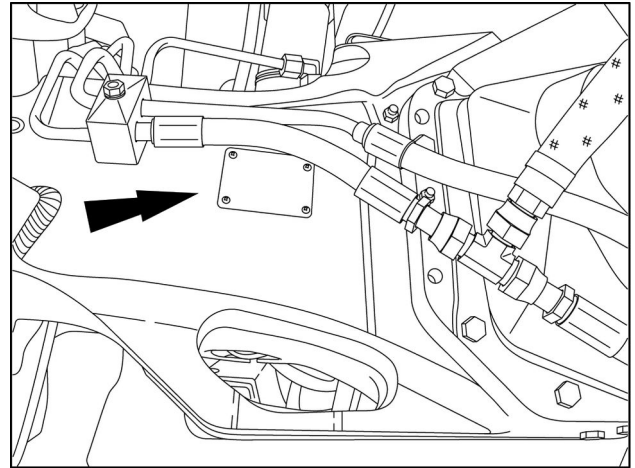


RAIL12TR02191AA 6

Auto Command

Axle serial number

Located on the rear left hand side of the class 4.75 fixed, 4.75 saddle suspended, 5.0 fixed and 5.0 saddle suspended front axle housings. (example shown)



RAIL12TR02142AA 7

Thank you so much for reading.
Please click the “Buy Now!”
button below to download the
complete manual.



After you pay.

You can download the most
perfect and complete manual in
the world immediately.

Our support email:

ebooklibonline@outlook.com