

OPERATOR'S MANUAL

T8.320

T8.350

T8.380

T8.410

T8.435

Tractor

PIN ZERE08100 and above

Part number 47824583

2nd edition English

March 2015

Replaces part number 47586305



Contents

1 GENERAL INFORMATION

Note to the owner.....	1-1
Engine tampering.....	1-2
Tractor intended use.....	1-2
Electro-magnetic compatibility (EMC).....	1-2
ISOBUS certification.....	1-3
Product identification	1-4
Manual storage	1-7
Machine orientation.....	1-8
Component identification	1-9

2 SAFETY INFORMATION

Safety rules and signal word definitions	2-1
Safety rules - General	2-2
Safety rules - General maintenance safety	2-4
Safety rules - Wheels and tires	2-4
Safety rules - Driving on public roads and general transportation safety	2-4
Safety rules - Fire and explosion prevention	2-5
Safety rules - General battery safety	2-5
Safety rules - Hydraulic system safety	2-6
Safety rules - Instructional seat safety	2-6
Safety rules - Operator presence system	2-7
Safety rules - Power Take-Off (PTO)	2-7
Safety rules - Reflectors and warning lights	2-7
Safety rules - Seat belts	2-7
Safety rules - Roll Over Protective Structure (ROPS)	2-7
Safety rules - Cab protection	2-9
Safety rules - Air conditioning system	2-9
Safety rules - Personal Protective Equipment (PPE)	2-9
Safety rules - Do Not Operate tag	2-9
Safety rules - Hazardous chemicals	2-9
Safety rules - Utility safety	2-10
Safety rules - Electrical storm safety	2-10
Safety rules - Mounting and dismounting	2-10
Safety rules - Working at heights	2-11
Safety rules - Lifting and overhead loads	2-11
Safety rules - Implements, tools and trailers	2-11
Safety rules - Roll over and tip over	2-12
Ecology and the environment	2-13
Safety signs	2-14
Fire extinguisher.....	2-27
Emergency exit.....	2-28
Wheel wedges.....	2-29

3 CONTROLS AND INSTRUMENTS

ACCESS TO OPERATOR'S PLATFORM

Tractor access	3-1
Lower step	3-3

OPERATOR'S SEAT

Control identification	3-4
------------------------------	-----

INSTRUCTOR'S SEAT

Overview	3-8
----------------	-----

FORWARD CONTROLS

Steering column	3-9
Front console	3-12
Pedal controls	3-14

LEFT-HAND SIDE CONTROLS

Emergency brake lever	3-16
Pneumatic trailer brake	3-16

RIGHT-HAND SIDE CONTROLS

Armrest console	3-17
Multi function handle	3-19
Engine speed control	3-24
Control panel	3-25
Remote valve controls	3-32
Joystick	3-33
Rear hitch controls	3-35
Armrest compartment	3-37
Adjusting the armrest console	3-39

REARWARD CONTROLS

Fender console	3-40
Automatic temperature controls	3-43
Automatic temperature control system	3-46
Ventilation	3-47

OVERHEAD CONTROLS

Interior lamps	3-49
----------------------	------

EXTERIOR CONTROLS

Rear fender	3-50
Front hitch	3-52

INSTRUMENT CLUSTER

Overview	3-53
Gauges	3-54

Status and warning icons	3-55
Upper display	3-58
Lower display	3-61
Keypad	3-63
Setup menu	3-65
Rear tire radius chart	3-71
Adjust menu	3-72
Performance features	3-80

4 OPERATING INSTRUCTIONS

COMMISSIONING THE UNIT

Engine - Safety rules	4-1
-----------------------------	-----

STARTING THE UNIT

Normal engine starting	4-4
Cold starting aids	4-8
Cold temperature operation	4-10

STOPPING THE UNIT

Stopping the engine	4-12
---------------------------	------

MOVING THE UNIT

FULL POWERSHIFT TRANSMISSION	4-14
Powershift transmission	4-14
Best practices for prolonged transmission life	4-15
Inching pedal and throttle	4-16
Powershift transmission controls	4-17
Upper display - Powershift transmission	4-20
Driving the Powershift vehicle	4-22
Setting default gears	4-27
Ground Speed Management (GSM)	4-29
CONTINUOUSLY VARIABLE TRANSMISSION (CVT)	4-37
Auto Command brake, pedal and throttle operation	4-37
Auto Command controls	4-42
Upper display	4-47
Auto Command operation	4-48
Driving the Auto Command transmission	4-54
Transmission messages	4-59
POWERSHIFT AND CVT TRANSMISSIONS	4-61
Mechanical Front Drive (MFD)	4-61
Differential lock system	4-64
Suspended axle	4-66
Ride control	4-70
Engine power boost	4-72
Constant engine speed	4-73
Suspended cab	4-76
Headland management system	4-77

PARKING THE UNIT

Automatic park lock	4-83
---------------------------	------

5 TRANSPORT OPERATIONS

ROAD TRANSPORT

Tractor warning lamps	5-1
Safe transport speed	5-3

SHIPPING TRANSPORT

Securing the tractor for shipping	5-4
---	-----

RECOVERY TRANSPORT

Safety rules	5-5
Towing the tractor	5-6

6 WORKING OPERATIONS

GENERAL INFORMATION

Overview	6-1
----------------	-----

REAR POWER TAKE-OFF (PTO)

Safety rules	6-2
Connecting the Power Take-Off (PTO)	6-6
Interchangeable Power Take-Off (PTO) shaft	6-7
Rear Power Take-Off (PTO) operation	6-13
Power Take-Off (PTO) fender switch operation	6-17
Auto Power Take-Off (PTO) operation	6-18

FRONT POWER TAKE-OFF (PTO)

Overview	6-21
Front Power Take-Off (PTO) operation	6-22

REAR HITCH

Identification	6-25
Link adjustment	6-26
Hitch high clearance adjustment	6-30
Hydraulic links	6-33
Sway limiter adjustment	6-35
Automatic telescoping stabilizers	6-36
Lower link block adjustment	6-38
Mechanical float adjustment	6-40
Hitch operation	6-41
Hitch remote switch operation	6-46
Position control operation	6-47
Load control operation	6-49
Slip control operation	6-51

Hitch set point	6-53
-----------------------	------

FRONT HITCH

Overview	6-55
Front hitch operation	6-55

DRAWBARS AND TOWING ATTACHMENTS

Safety rules	6-62
Drawbar capacity/position	6-63
Adjusting the drawbar	6-65

TRAILER HITCHES

Clevis and special drawbars	6-67
Automatic trailer hitch	6-69
Auto pickup hitch operation	6-72
Manual trailer hitch	6-74

TRAILER BRAKING SYSTEMS

Safety rules	6-76
Trailer brake connections	6-77
Air pressure monitoring	6-78

AUXILIARY CONNECTIONS

Auxiliary power and lighting	6-79
Cab power connections	6-81
Radar connection	6-82
Implement ISOBUS connector	6-83

HYDRAULIC REMOTE CONTROL VALVES

Valve couplers and connections	6-84
Motor return circuit	6-88
Power beyond circuit	6-89
Flow capacity	6-90
Hydraulic transport lock	6-91
Operating the controls	6-92
Remote valve display screens	6-96
Remote hydraulic auto mode	6-99
Auto depth control	6-102
Joystick operation	6-104

BALLASTING THE TRACTOR

Guidelines	6-108
Tire load and inflation charts	6-119
Weights, cast metal	6-133
Wheel slip and power hop performance	6-147

MECHANICAL FRONT DRIVE (MFD) AXLES

Front axle identification	6-150
Tire combinations and tread positions	6-151
Steering and oscillation stops	6-158
Tread and fender settings - Class 4.75 and 5.0 fixed front axles	6-160
Tread and fender settings - Class 4.75 and 5.0 saddle suspended front axles ..	6-168
Front wheel fenders	6-175
Front wheel fenders - Class 4.75 and 5.0 fixed and suspended axles	6-176
Front wheel fenders - Class 5.0 wide fixed and suspended axles	6-181

REAR AXLE

Rear wheel installation	6-186
Rear wheel tread settings	6-190

7 MAINTENANCE

GENERAL INFORMATION

Safety rules	7-1
Maintenance guidelines	7-2
Opening the hood	7-3
Closing the hood	7-5
Filling the fuel tank	7-6
Battery disconnect switch	7-8
Battery access and service	7-9
Tire and rim service	7-10
Tractor jacking points	7-12
Capacities	7-14
Consumables - Engine oil	7-15
Consumables - Transmission/hydraulic system fluid	7-16
Consumables - Diesel fuel	7-17
Consumables - Organic Acid Technology (OAT) coolant	7-18
Electrical component location	7-20
Lamps and bulbs	7-26
Maintenance chart notes	7-26
Maintenance summary decal	7-27

MAINTENANCE CHART

Maintenance chart	7-28
-------------------------	------

At warning message display

Air filter service icon/message*	7-30
Water in fuel message	7-33
Transmission oil filter switch	7-35
Hydraulic oil filter switch	7-38

First 10 to 50 hours

Wheel bolt torque	7-41
Weight bolt torque	7-42

Differential and planetary oil	7-43
--------------------------------------	------

Every 10 hours or daily

Engine oil level	7-44
Transmission oil level.....	7-45
Engine coolant level	7-46
Air reservoir.....	7-46
Rear hitch and front axle	7-46

Every 50 hours or weekly

Engine auxiliary fuel filter	7-47
------------------------------------	------

First 100 hours

Powershift transmission clutch calibration.....	7-49
---	------

Every 100 hours

Front hitch	7-55
Front Power Take-Off (PTO) drive shaft.....	7-57

Every 300 hours

Battery water level (Note B)	7-58
Engine air intake and exhaust hoses	7-60
Engine coolant level - deaeration tank	7-62
Weight bolt torque	7-63
Front axle (Note A)	7-64
Rear hitch (Note A)	7-66
Fuel tank.....	7-68
Differential and planetary oil level (Note B).....	7-69
Transmission oil pressure	7-70
Front Power Take-Off (PTO) oil level.....	7-71

Every 400 hours

Cab air filter*	7-72
-----------------------	------

Every 600 hours

Engine oil and filter*	7-75
Engine coolant antifreeze protection	7-78
Engine coolant hoses and clamps.....	7-78
Engine fuel filter*	7-80
Engine auxiliary fuel filter*	7-83
Fuel system bleeding.....	7-85
Changeable Power Take-Off (PTO) internal splines.....	7-86
Front Power Take-Off (PTO) oil and filter*.....	7-87
Engine air precleaner*	7-89

Every 1000 hours or annually

Pneumatic brake system dryer	7-90
Powershift transmission clutch calibration.....	7-91

Every 1200 hours or annually

Differential and planetary oil.....	7-97
Engine air filters*	7-101

Every 1500 hours

Transmission oil	7-104
Hydraulic oil filter*	7-107
Transmission oil filter*	7-108
Engine crankcase filter*	7-109

Every 3000 hours

Engine valve adjustment (Note C).....	7-113
---------------------------------------	-------

Every 4000 hours or every four years

Engine coolant.....	7-114
---------------------	-------

As required

Vehicle fire prevention	7-116
Cab air filter*.....	7-117
Grille screen and radiator area	7-120
Fuel tank vent filter	7-121
Transmission clutch and accumulator	7-121
Tire pressure	7-122
Fan belt.....	7-123
Remote valve collection bottle.....	7-129
Remote valve couplers	7-130
Cab fabric and carpet.....	7-131
Seat belt	7-131

STORAGE

Preparing for storage	7-132
Removal from storage	7-133

ELECTRICAL SYSTEM

Radio or audio system.....	7-134
Battery removal and installation	7-135
Auxiliary battery connections	7-137
Headlight	7-138
Flood and work light	7-139
Grille work light	7-139
Fender tail light and warning light	7-140
Roof work light.....	7-141
Rotating beacon light	7-142

Interior light	7-143
----------------------	-------

8 TROUBLESHOOTING

ALARM(S)

Display warnings overview	8-1
Display warnings - Level 1	8-2
Display warnings - Level 2	8-4
Display warnings - Level 3	8-7
Display warnings - Level 4	8-9

SYMPTOM(S)

Engine symptoms	8-11
Transmission symptoms.....	8-13
Hydraulic symptoms	8-14
Hitch symptoms	8-15
Brake symptoms.....	8-16
Cab environment symptoms.....	8-16
Electrical power system symptoms.....	8-17

9 SPECIFICATIONS

Engine specifications	9-1
Power train specifications	9-2
Operating speeds.....	9-6
Vehicle dimensions and shipping weight	9-7
Maximum operating weight.....	9-14

10 ACCESSORIES

Farming system displays	10-1
Rear view mirrors.....	10-2
Loader connection and operation	10-4
General accessories.....	10-5

11 FORMS AND DECLARATIONS

Delivery report - owner copy	11-1
Delivery report - dealer copy	11-2
First service - owner copy	11-4
First service - owner copy	11-6

1 - GENERAL INFORMATION

Note to the owner

This manual contains important information about the safe operation, adjustment and routine maintenance of your T8. or T8. SmartTrax™ series tractor. The manual is divided into 10 chapters as outlined in the table of contents. Refer to the index at the end of this manual for locating specific items about your tractor.

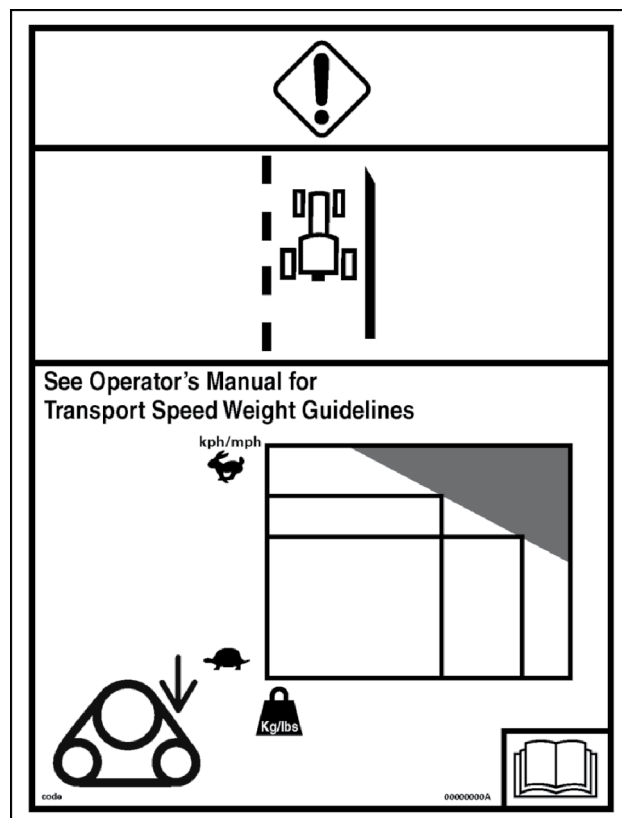
Do NOT operate or permit anyone to operate or service this machine until you or the other persons have read this manual. Use only trained operators who have demonstrated the ability to operate and service this machine correctly and safely.

Tractors equipped with rear tracks

On SmartTrax models, refer to the information starting on page **Operating speeds - SmartTrax™ tractors** for transport speed weight limitations.

This Operator's Manual is to be stored in the manual compartment behind the operator's seat in the vehicle. Make sure this manual is in good condition. Contact your dealer to obtain additional manuals.

Your NEW HOLLAND dealer will instruct you in the general operation of your new equipment. Your dealer's staff of factory-trained service technicians will be glad to answer any questions that may arise regarding the operation of your machine. They will also provide any after-sales service you may need, and genuine NEW HOLLAND parts, your guarantee of quality and match.



RAIL14TR03870BA 1

Engine tampering

The fuel system and engine on your machine are designed and built to government emissions standards. Tampering by dealers, customers, operators, and users is strictly prohibited by law.

Failure to comply could result in government fines, rework charges, invalid warranty, legal action, and possible confiscation of the machine until rework to original condition is completed. Engine service and/or repairs must be done by a certified technician only!

Tractor intended use

T8. or T8. SmartTrax™ series tractors with standard equipment and authorized attachments, are intended to be used for customary farming, land leveling and related agriculture operations (intended use). Installation of utility (dozer) blades, tile plows, or push bars on the tractor is not recommended. Any tractor damage resulting from the installation and/or use of such equipment is not covered by the tractor warranty.

Consult an authorized dealer or CNH Industrial America LLC on changes, additions or modifications that can be required for this machine to comply with various regulations and safety requirements. Unauthorized modifications will cause serious injury or death. Anyone making such unauthorized modifications is responsible for the consequences.

The tractor is not designed for light/heavy forestry applications; usage is prohibited for forestry applications.

Do not use this machine for any purpose or in any manner other than as described in the manual, decals, or other product safety information provided with the machine. These materials define the machine's intended use.

Use in any other way is considered as contrary to the intended use. The manufacture accepts no liability for any damage or injury resulting from this misuse and these risks must be born solely by the user.

Electro-magnetic compatibility (EMC)

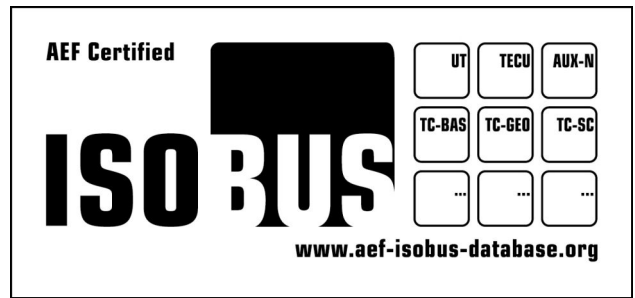
Interference may arise as a result of add-on equipment that may not necessarily meet the required standards. As such interference can result in serious malfunction of the unit and/or create unsafe situations, you must observe the following:

- The maximum power of emission equipment (radio, telephones, etc.) must not exceed the limits imposed by the national authorities of the country where you use the machine
- The electro-magnetic field generated by the add-on system should not exceed **24 V/m** at any time and at any location in the proximity of electronic components
- The add-on equipment must not interfere with the functioning of the on board electronics

Failure to comply with these rules will render the NEW HOLLAND warranty null and void.

ISOBUS certification

The Agricultural Industry Electronics Foundation (AEF) certified label indicates that various system components are in compliance with the ISOBUS 11783 standard. The software in your tractor ISOBUS control module – the Tractor Electronic Control Unit (TECU) – has been independently tested and received basic TECU certification.




RAIL14TR02690AA 1

Product identification

Tractor model and product identification number

Write your model number, product identification number (PIN) or serial number of major components on the lines provided. If needed, give these numbers to your dealer when you need parts or information for your machine.

 CNH Industrial America LLC Racine, WI 53404 U.S.A. Made In U.S.A.		Year of Construction 3	Model Year 4	CE
Type 1	EEC Number 2	Product Identification Number 5		
• Total Permissible Mass (*): 6 kg • Permissible Front Axle Load (*): 7 kg • Permissible Rear Axle Load (*): 8 kg (*) Depending on the Tires 9		Permissible Towable Mass: • Unbraked Towable Mass: 10 kg • Independently-Braked Towable Mass: 11 kg • Inertia-Braked Towable Mass: 12 kg • Towable Mass Fitted with an Assisted Braking System: (Hydraulic or Pneumatic): 13 kg		

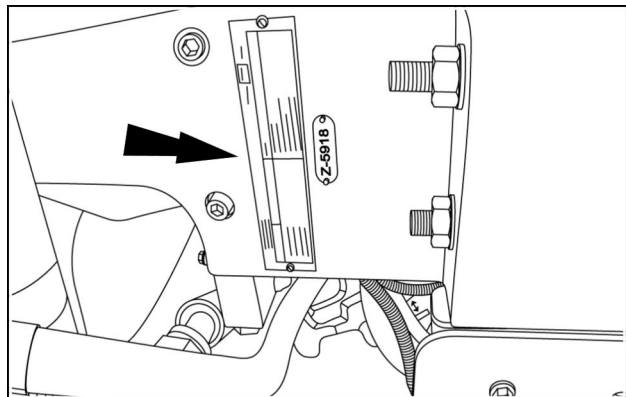
RAIL14TR02081EA 1

1. Type	8. Permissible rear axle load (*):
2. EEC number	9. (*) Depending on the tires
3. Year of construction	Permissible towable mass:
4. Model year	• 10. Unbraked towable mass:
5. Product identification number	• 11. Independently-braked towable mass:
6. Total permissible mass (*):	• 12. Inertia braked towable mass:
7. Permissible front axle load (*):	• 13. Towable mass fitted with an assisted braking system: (hydraulic or pneumatic)

Model :

Serial number:

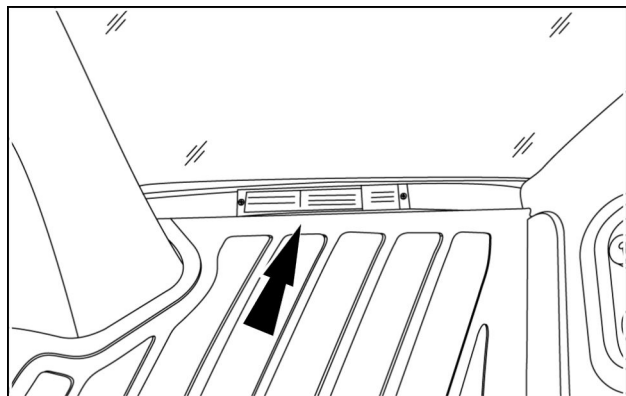
NOTE: Located on right hand front casting. Pin plate may be mounted vertically or horizontally.



RCPH11CCH010AAB 2

Roll Over Protective Structure (ROPS) serial number

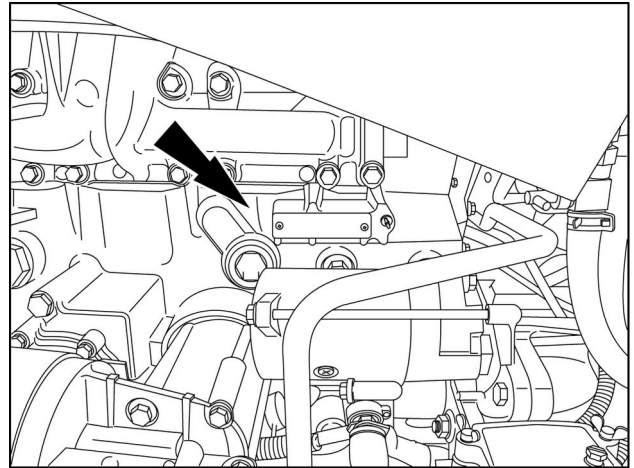
NOTE: Located on the right hand cab floor.



RCPH11CCH014AAB 3

Engine serial number

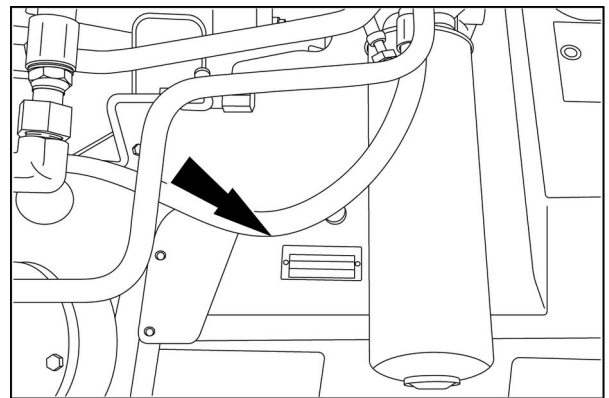
NOTE: Located on the valve cover. The serial number is also etched into the left hand side of the engine block, just below the oil cooler.



RAIL12TR02140AA 4

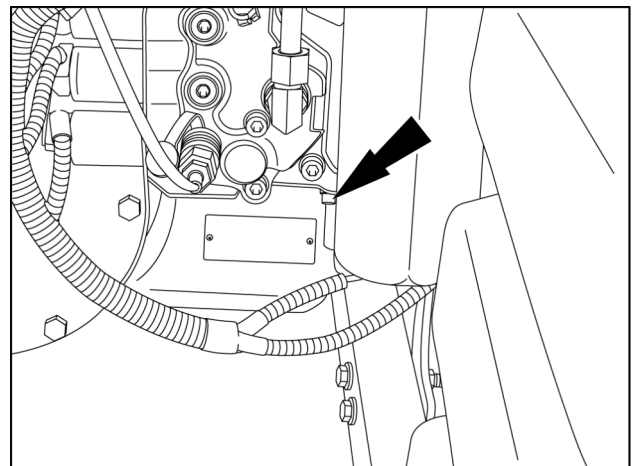
Transmission serial number

NOTE: Located on the right hand side of the transmission to the left of the main hydraulic filter



RAIL12TR01410AA 5

Powershift transmission



RAIL12TR02191AA 6

Auto Command

Thank you so much for reading.
Please click the “Buy Now!”
button below to download the
complete manual.



After you pay.

You can download the most
perfect and complete manual in
the world immediately.

Our support email:

ebooklibonline@outlook.com