

**FARMALL 45A**  
**FARMALL 50A**  
Tractor

**OPERATOR'S MANUAL**

**Part Number 47982704**  
1<sup>st</sup> edition English  
June 2016



# Contents

---

## 1 GENERAL INFORMATION

Note to the owner.....	1-1
Product identification .....	1-3
Product identification plate .....	1-4
International symbols .....	1-6
Noise level.....	1-7
Vibration level information sheet .....	1-7
Machine stability.....	1-8
Personal safety .....	1-12
Before operating the tractor .....	1-13

## 2 SAFETY INFORMATION

Safety precautions.....	2-1
Before driving the tractor .....	2-1
Operating the tractor .....	2-2
Operating the Power Take-Off (PTO).....	2-3
Servicing the tractor .....	2-3
Prevention of fire or explosions.....	2-4
Diesel fuel .....	2-5
Fire extinguisher.....	2-5
Safety decals .....	2-6
Protection offered by the tractor.....	2-15
Intended use statement .....	2-16

## 3 CONTROLS AND INSTRUMENTS

### OPERATOR'S SEAT

Operator seat adjustments .....	3-1
Seat belt .....	3-2

### FORWARD CONTROLS

Switches and controls .....	3-3
Throttle control adjustment .....	3-3
Headlight switch control .....	3-4
Hazard warning light switch .....	3-5
Foot brakes .....	3-5
Foot accelerator .....	3-6
Clutch pedal .....	3-6
Shuttle lever .....	3-6

### LEFT-HAND SIDE CONTROLS

Parking brake - adjustment.....	3-7
Four-Wheel Drive(4WD) lever .....	3-7
Transmission range lever.....	3-7
Power Take-Off (PTO).....	3-8

---

## **RIGHT-HAND SIDE CONTROLS**

Differential lock pedal.....	3-8
Transmission main shift lever.....	3-9

## **INSTRUMENT PANEL**

Indicator and warning lights .....	3-9
Gauges .....	3-10

## **ROLL OVER PROTECTIVE STRUCTURE**

Roll Over Protective Structure (ROPS).....	3-11
--	------

## **4 OPERATING INSTRUCTIONS**

### **COMMISSIONING THE UNIT**

Tractor refuelling.....	4-1
-------------------------	-----

### **STARTING THE UNIT**

Boosting the battery .....	4-2
Starting the engine .....	4-2

### **STOPPING THE UNIT**

Stopping the engine .....	4-6
---------------------------	-----

## **5 TRANSPORT OPERATIONS**

### **PREPARING FOR ROAD TRANSPORT**

Carrying the tractor on a transporter .....	5-1
---	-----

### **RECOVERY TRANSPORT**

Towing the tractor.....	5-1
Frame localization overview .....	5-2

## **6 WORKING OPERATIONS**

### **TRANSMISSION**

Transmission .....	6-1
--------------------	-----

### **POWER TAKE OFF (PTO)**

PTO operation safety rules .....	6-2
Attaching Power-Take Off (PTO) driven equipment .....	6-3
Power Take-Off (PTO) operation .....	6-3

### **REAR HITCH**

Hydraulic Power Lift (HPL) .....	6-5
----------------------------------	-----

---

## THREE POINT HITCH

Three-point hitch .....	6-7
Lift rod adjustment.....	6-8
Top link adjustment.....	6-9
Swinging drawbar .....	6-11
Flexible link end adjustment.....	6-11
Telescopic stabilizers .....	6-12

## REMOTE CONTROL VALVES

Remote control valves - safety rules .....	6-12
Rear remote control valve(s) .....	6-13

## AUXILIARY POWER CONNECTIONS

Trailer electrical socket .....	6-13
---------------------------------	------

## WHEEL TRACK ADJUSTMENT

Front wheel track adjustment.....	6-14
Front wheels-toe-in-adjust.....	6-15
Wheel track adjustment .....	6-17

## BALLASTING AND TIRES

Ballast .....	6-18
Iron weights (where fitted) .....	6-19
Liquid ballast .....	6-20
Tire inflation.....	6-20
Tire load and inflation charts .....	6-21

## 7 MAINTENANCE

### GENERAL INFORMATION

Biodiesel fuel .....	7-1
Introduction .....	7-2
Fuel requirement .....	7-3
Guards.....	7-4
Lubricants and coolants .....	7-5
Consumables.....	7-5

### MAINTENANCE CHART

Maintenance chart.....	7-6
------------------------	-----

### EVERY 10 HOURS OR EACH DAY

Check engine oil level .....	7-7
Radiator coolant level check .....	7-7
Steering reservoir oil level check .....	7-8

### FIRST 50 HOURS

Service operations.....	7-8
-------------------------	-----

---

## EVERY 50 HOURS

Clutch adjustment .....	7-9
Brake pedal adjustment .....	7-9
Wheel bolts and nuts - Check .....	7-10
Tire pressure .....	7-10
Alternator belt .....	7-10
Grease fittings .....	7-11
Transmission, rear axle, and hydraulic system oil level - Check .....	7-14
Drain the fuel system water separator .....	7-14

## EVERY 100 HOURS

Change engine oil and filter .....	7-15
------------------------------------	------

## EVERY 150 HOURS

Service the engine air cleaner .....	7-16
Battery electrolyte level .....	7-18

## EVERY 200 HOURS

Change the fuel filter .....	7-18
------------------------------	------

## EVERY 300 HOURS

Check the 4WD front axle differential oil level and the hubs oil level .....	7-19
Power Take-Off (PTO) clutch lever .....	7-20
Front wheel bearings .....	7-20

## EVERY 600 HOURS

Transmission breather - Cleaning .....	7-21
Hydraulic oil filter .....	7-21
Change the engine air cleaner outer element .....	7-22
Engine tappet valve clearance .....	7-23
Steering toe-in - Adjust .....	7-24

## EVERY 1200 HOURS OR ANNUALLY

Fuel injectors .....	7-24
Change the transmission oil, the rear axle oil and the hydraulic oil .....	7-24
Change the steering oil and filter .....	7-25
Change the 4WD differential oil .....	7-26
Change the 4WD planetary hub oil .....	7-26

## EVERY 1200 HOURS OR TWO YEARS

Change the engine coolant fluid .....	7-27
Air cleaner inner element - Replace .....	7-28

## GENERAL MAINTENANCE

Bleeding the fuel injection system .....	7-28
--	------

---

Engine idle speed .....	7-30
Bulb replacement .....	7-31
Fuse replacement .....	7-31
Protecting the electronic and electrical systems during battery charging or welding ..	7-32
Alternator .....	7-33

## STORAGE

Tractor storage .....	7-34
Preparation for use after storage .....	7-34

## 8 TROUBLESHOOTING

### SYMPTOM(S)

Engine .....	8-1
Electrical system .....	8-2
Hydraulic system .....	8-3
Hydraulic lift .....	8-3
Brakes .....	8-3

## 9 SPECIFICATIONS

Speed charts .....	9-1
Engine .....	9-1
Capacities .....	9-2
Cooling system .....	9-2
Electrical system .....	9-2
Fuel system .....	9-3
Brakes .....	9-3
Steering .....	9-3
Power Take-Off (PTO) .....	9-3
Hydraulic system .....	9-4
Three-point hitch .....	9-4
Clutch .....	9-4
Tires .....	9-4
General dimensions .....	9-5
Operating weights .....	9-6

---

# 1 - GENERAL INFORMATION

## Note to the owner

### General

This Manual has been prepared to assist you in the correct procedure for running--in, driving and operating and for the maintenance of your new tractor. Your tractor, which was designed to power and propel itself, is intended for use in normal and customary agricultural applications.

Read this Manual carefully and keep it in a convenient place for future references. If at any time you require advice concerning your tractor, do not hesitate to contact your Authorized Dealer. He has company trained personnel, genuine manufacturers' parts and the necessary equipment to carry out all your service requirements.

All data given in this manual is subject to production variations. Dimensions and weight are approximate only and the illustrations do not necessarily show tractors in standard condition. For exact information about any particular tractor, please consult your CASE IH dealer.

Your tractor has been designed and built to give maximum performance, economy and ease of operation under a wide variety of operating conditions. Prior to delivery, the tractor was carefully inspected, both at the factory and by your dealer to ensure that it reaches you in optimum condition. To maintain this condition and trouble-free operation, it is important that the routine services are carried out at the recommended intervals.

### About this manual

This manual gives information for use of your machine, as intended and under the conditions foreseen by the manufacturer during normal operation and routine service and maintenance.

Read and understand; keep it in good condition and always safely store it in the provided pocket in the back of your seat for later easy retrieval.

This manual does not contain all the information related to periodical service, converting and repairs to be carried out by professional service personnel.

The Table of contents page (s) are provided to have an overview of main manual's topics. A detailed alphabetic index is available at the end of this manual for locating specific items.

### Normal operation

- Normal operation means the use of the tractor for the purpose intended by the manufacturer by an operator familiar with the tractor and the mounted or towed equipment and complying with the information for op-

eration and safe practices, as specified by the manufacturer in this manual and by the decals on the tractor and the equipment

- Normal operation includes the preparation and storage of the tractor, swinging components into work position and vice versa, adding or removing ballast and picking up and setting off attachments.
- Normal operation includes the adjustment and setting of the tractor and equipment, for the specific condition of the field and/or the crop.

### Routine service

- Routine service and maintenance means activities that must be done daily by an operator familiar with the tractor characteristics and complying with the information for routine service and safe practices, as specified by the manufacturer in this manual and by decals on the tractor, in order to maintain its proper function. Routine service includes activities such as fueling, cleaning, washing, topping up fluid levels, greasing, replacing of consumable articles such as lamp bulbs.

### Converting, periodical service and repair

- Periodical service means activities that must be done at defined intervals by trained personnel familiar with the tractor characteristics and which are complying with the information for periodical service and safe practices, as partly specified by the manufacturer in this manual and in other Company literature, in order to maintain the expected life time of the tractor.
- Converting means activities that must be done by professional service personnel familiar with the tractor characteristics and complying with the information for converting, as partly specified by the manufacturer in this manual, in assembly instructions or in other Company literature, in order to fit the tractor to a specific configuration.
- Repair means activities that must be done by professional service personnel only familiar with the tractor characteristics and complying with the information for repair, as specified by the manufacturer in the dealer's workshop manual, in order to restore the proper function of the tractor after a failure or degradation of performance.

### Cleaning the tractor

When cleaning the tractor, particularly if using a high pressure washing machine. precaution has to be taken to safeguard electrical / electronic components and connections. The pressure generated by some of these

machines is such that complete protection against water ingress cannot be guaranteed.

While washing the tractor, using a high pressure washing machine, do not stand too close to the tractor and avoid directing the jet at electrical connections, breathers, seals, filler caps, etc. Never direct a cold water jet at a hot engine or exhaust.

### **Safety**

Read the safety precautions and follow the advice offered before operating the tractor.

### **Service parts**

It should be pointed out that genuine parts have been examined and approved by the company. The installation and/or usage of 'non-genuine' products could have negative effects upon the design characteristics of your tractor

and thereby affect it's safety. The Company is not liable for any damage caused by the use of 'non-genuine' parts and accessories.

Only genuine CASE IH replacement parts should be used. The use of non-genuine parts may invalidate legal approvals associated with this product.

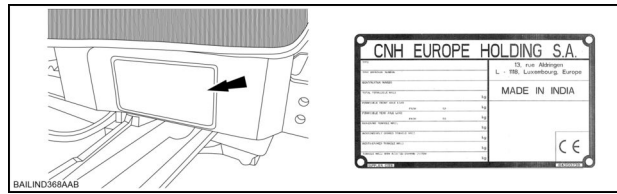
It is prohibited to carry out any modifications to the tractor unless specifically authorized, in writing, by the After Sales Service department of the Company.

### **Warranty**

Your tractor is warranted according to the current legislation in your country and with contractual agreements reached with the dealer at the time of sale. However, the warranty is no longer valid if the rules and instructions for the use and maintenance of the tractor described in this manual are not observed.



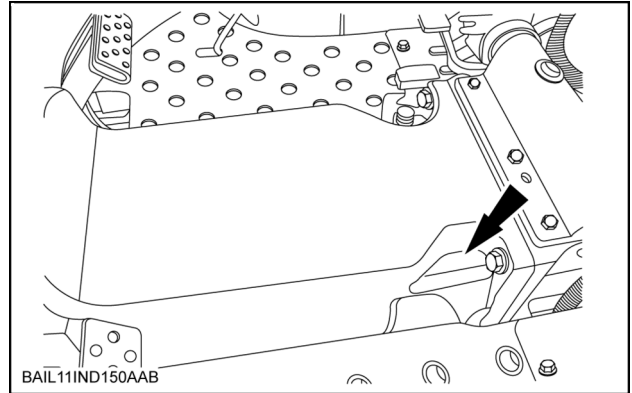
## Product identification



BAILIND368AAB 1

### Tractor Identification Location (stamped) - (Front right side on frame)

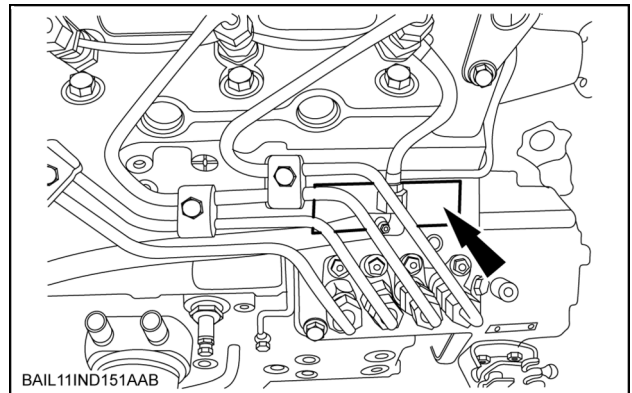
The tractor serial number, unit code and engine number are stamped on the top of the clutch housing. These numbers are also repeated on the vehicle identification decal reproduced above.



BAIL11IND150AAB 2

### Engine Identification -

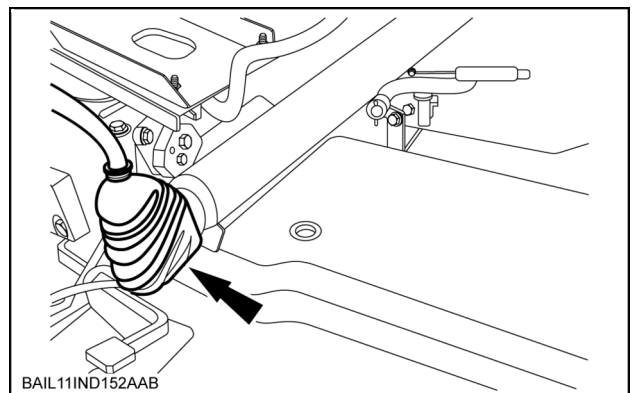
The engine serial number stamped on right side of the engine cylinder block. This number is repeated on tractor identification decal and also stamped on clutch box. Record the engine Serial No. below for quick reference.  
 Engine Serial No. ....



BAIL11IND151AAB 3

### Transmission Identification

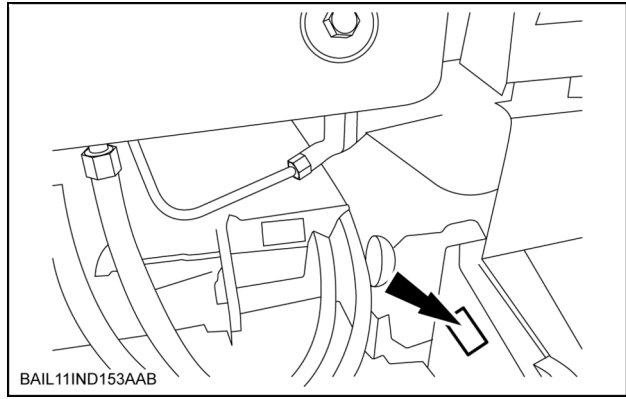
The Serial No. is stamped on right side of transmission housing below driver seat. This information is repeated on tractor identification decal. Record the Transmission Serial No. below for quick reference.  
 Transmission Serial No.....



BAIL11IND152AAB 4

## Front Axle Identification

The plate (1) is located on the right hand side and gives the identification data for the axle fitted on the machine. Indicate below the corresponding serial number.  
Front Axle Serial No.....



BAIL11IND153AAB 5

## Product identification plate

Enter the machine classification the product identification number (P.I.N.) and serial numbers above the relevant lines below. When ordering components or requesting information, you may need to quote this numerical data to the Case dealer.

Keep a written record of these identification numbers. Store these data records and the vehicle licensing documentation in a safe place. If the vehicle is ever stolen, notify the local police of these identification details.

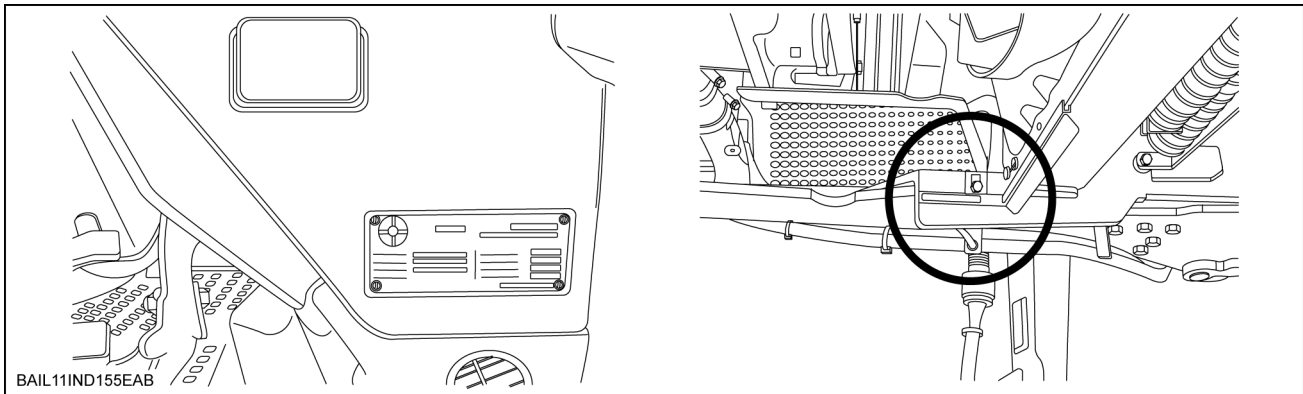
## ABOUT THE RATING PLATE

### Arrangement of individual numbers

CNH EUROPE HOLDING S.A.	
TYPE	13, rue Aldringen L - 1118, Luxembourg, Europe
TYPE APPROVAL NUMBER	
IDENTIFICATION NUMBER	MADE IN INDIA
TOTAL PERMITTED MASS	kg
PERMITTED FRONT AXLE LOAD	kg
PERMITTED REAR AXLE LOAD	kg
PERMITTED TOWABLE MASS	kg
NONPERMANENTLY CARRIED TOWABLE MASS	kg
PERMANENTLY CARRIED TOWABLE MASS	kg
TOWABLE MASS WITH ADJUSTED LEVERED SYSTEM	kg
846100210	CE

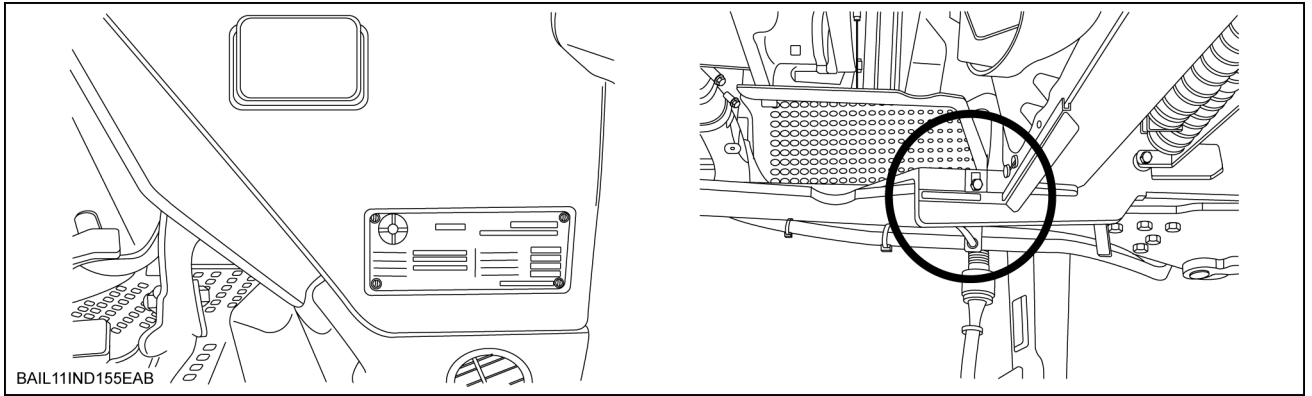
BAILIND369AAB

BAILIND369AAB 1



BAIL11IND155EAB 2

**Arrangement of individual numbers**



BAIL11IND155EAB 3

Classification : Underside of hood

Product identification number: .....

## International symbols

As a guide to the operation of the machine, various universal symbols have been utilized on the instruments, controls, switches, and fuse box. The symbols are shown below with an indication of their meaning.

 Thermostat starting aid	 Roof beacon	 PTO	 DraftControl
 Alternator charge	 KAM Keep Alive Memory	 N Transmission in neutral	 Accessory socket
 Fuel level	 Turn signals	 Creeper gears	 Implement socket
 Automatic Fuel shut-off	 Turn signals — one trailer	 Slow or low setting	 %age slip
 Engine speed (rev/min x 100)	 Turn signals — two trailers	 Fast or high setting	 Hitch raise (rear)
 Hours recorded	 Front windscreen wash/wipe	 Ground speed	 Hitch lower (rear)
 Engine oil pressure	 Rear windscreen wash/wipe	 Differential lock	 Hitch height limit (rear)
 Engine coolant temperature	 Heater temperature control	 Rear axle oil temperature	 Hitch height limit (front)
 Coolant level	 Heater fan	 Transmission oil pressure	 Hitch disabled
 Tractor lights	 Air conditioner	 4WD engaged	 Hydraulic and transmission filters
 Headlight main beam	 Air filter blocked	 Warning!	 Remote valve extend
 Headlight dipped beam	 Parking brake	 Hazard warning lights	 Remote valve retract
 Work lights	 Brake fluid level	 Variable control	 Remote valve float
 Stop lights	 Trailer brake	 Pressurized! Open carefully	 Malfunction! See Operator's Manual
 Horn	 Warning ! Corrosive substance	 Position Control	 Malfunction! (alternative symbol)

## Noise level

In accordance with E.E.C. directives, the noise levels of tractors covered by this manual are as follows:  
Tractors with cab and fixed windscreen with air cleaner extraction system

Model (transmission)	Noise level at operators ear		Drive by noise level
	Closed (1)	Open (2)	
	Annex II*	Annex II*	Annex VI**
Farmall 45 (2WD)	NA	85.8	79
Farmall 50 (2WD)	NA	85.8	79
Farmall 45 (4WD)	NA	85.8	79
Farmall 50 (4WD)	NA	85.8	79

\* Test results are in accordance with directive 2009/76/EEC Annex II.

Maximum noise level at the operators ear with:

- 1) all cab windows and doors closed, tractor off load.
- 2) rear window and roof hatch open, tractor off load.

\*\* Test results are in accordance with directive 2009/63/EEC Annex VI.

## Vibration level information sheet

### Hazards related to vibration exposure

**NOTE:** The Whole Body Vibration level will depend on a lot of parameters, some of them machine related, others terrain related and many driver related. The properties of the track or field surface and the driving speed will be the predominant parameters.

#### WARNING

**Machine vibration caused by improper machine maintenance could injure an operator. Follow ALL of the precautions listed below. Failure to comply could result in death or serious injury.**

W0443A

**NOTE:** More information about Whole Body Vibration (WBV) on agricultural tractors can be found on specific publications and related risks may be covered by local regulations; in order to correctly estimate statistics values based on your everyday activity on the tractor please use a specific measuring device, such as a triaxial seat accelerometer.

**NOTE:** Please visit [www.cema-agri.org/WBV](http://www.cema-agri.org/WBV) to get further documentation on Whole body vibrations risks.

Machine vibrations cause discomfort to the operator and in some cases his health and safety may be at risk.

Make sure the machine is in good condition and that the service interval work has been carried out correctly.

Check the tire pressure, the steering and the brake system.

Check that the operator's seat and adjustment controls are in good condition and then adjust the seat to suit the operator's size and weight.

Operate all controls consistently so the machine works smoothly and modify your driving to suit working conditions.

During travel, adjust your speed and slow down if necessary

In compliance with EU standard, 78/764/EEC you can find in the table below the vibration levels measured for seats used on your tractor model.

Seat model / type	Vibration* m/s <sup>2</sup> at (testing mass)	
	Light weight operator	Heavy weight operator
Harita A11600185A00	8.90	2.32

\* Corrected weighted vibration acceleration

## Machine stability

The following procedure describes the requirements for machine stability, and how to calculate the required front mounted and rear mounted ballast.

For the ballast refer also to the ballast recommendations in this manual.

For the maximum permitted operating weights refer to the vehicle weights in this manual.

The following procedure and calculation is based on the machine on even ground.

### ⚠ WARNING

#### Legend

		To get this Value Refer to :
MT	Mass of the unladen tractor = Tractor with standard equipment, minimum fuel, no weights or liquid ballast, no operator, and single wheel equipment	1945--1995 (4WD) 1745--1775 (2WD)
MF	Front axle load unladen tractor	840 (4WD) 625 (2WD)
MR	Rear axle load unladen tractor	1120 (4WD & 2WD)
a	Distance Centre of Gravity front load to front axle centre	444 (4WD) 430 (2WD)
b	Wheelbase	1962 (4WD) 1977 (2WD)
c	Distance rear axle centre to lower hitch point of three point linkage	918 (4WD) 919 (2WD)
d	Distance Centre of Gravity rear load to lower hitch point of three point linkage	Manual of the equipment or measure
e	Distance rear axle centre to centre of gravity (COG) of MT (mass of unladen tractor)	840.8 (4WD) Unladen 708.09 (2WD) Unladen
BF	Mass of front mounted equipment or front mounted ballast	200 Kg
BR	BR Mass of rear mounted equipment or rear mounted ballast	NA
MPT max	Maximum permissible mass of the laden tractor	2250 (4WD) 2050 (2WD)
MPF max	Maximum permissible mass of the laden tractor	1040 (4WD) 825 (2WD)
MPR max	Maximum permissible rear axle load	1120 for Bosch

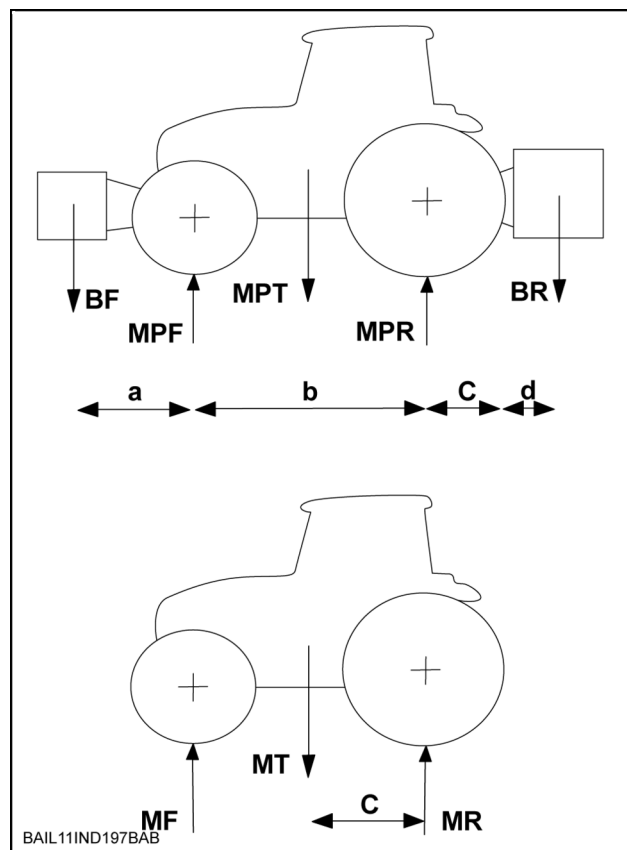
### Roll-over hazard!

**ALWAYS** be aware of the effect of inclines and steep hills on machine stability. Operating, handling, and braking performance may be affected. Adjust ballast and driving speed accordingly to ensure stable and accurate steering, and to ensure the required brake performance in critical situations.

Failure to comply could result in death or serious injury.

W0444A

### Necessary data to evaluate stability (FARMALL 45 2WD / 4WD)



### NOTE:

1. Equipment weight together with its filling must be added to laden values (seed drills, fertilizer spreaders, etc.)
2. Ballasting weight in the centre of the front or rear tires, either solid or liquid, must be added to MF, MR and MT.
3. In case of an unbalanced trailer, the value c is the distance between the centre of the rear axle and the hitching point, the value d is 0, and BR is the vertical load of the trailer on the hitch.

**Buy Now**



Our support email:

[ebooklibonline@outlook.com](mailto:ebooklibonline@outlook.com)