

# OPERATOR'S MANUAL

---

**TT35**

**TT40**

**TT45**

Tractor

**Part number 48013327**

1<sup>st</sup> edition English  
July 2016



# Contents

---

## 1 GENERAL INFORMATION

General information and safety .....	1-1
Product identification .....	1-2
Ecology and the Environment .....	1-4

## 2 SAFETY INFORMATION

Safety rules .....	2-1
Personal safety .....	2-1
Driving the tractor .....	2-2
Operating the tractor .....	2-2
Operating the Power Take-Off (PTO) .....	2-4
Servicing the tractor .....	2-4
Diesel fuel .....	2-5
Trailer hitching .....	2-6
Instructions for Driving on Road .....	2-8
General and Safety Decals .....	2-10
International symbols .....	2-15
Roll Over Protection Structure (ROPS) .....	2-16
Fuel saving tips for optimum performance .....	2-18

## 3 CONTROLS AND INSTRUMENTS

### Access to operator's platform

Before Operating .....	3-1
------------------------	-----

### Operator's seat

Operator seat - Adjust .....	3-1
------------------------------	-----

### Forward controls

Instrument cluster - Control identification .....	3-3
Hand controls and switches .....	3-4

### Left-hand side controls

Clutch Pedal .....	3-5
PTO Lever .....	3-5
Four-Wheel Drive(4WD) lever .....	3-6

### Right-hand side controls

Parking Brake .....	3-6
Brake Pedal .....	3-7
Foot Accelerator .....	3-7
Differential lock pedal .....	3-8

---

## Transmission

Transmission - Control identification .....	3-8
---	-----

## 4 OPERATING INSTRUCTIONS

### Commissioning the unit

Before Operating .....	4-1
Running-In Procedure .....	4-1

### Starting the unit

Starting the tractor with jumper cables .....	4-2
Starting the engine .....	4-2

### Stopping the unit

Stopping the engine .....	4-4
---------------------------	-----

## 5 TRANSPORT OPERATIONS

### Road transport

Carrying the tractor on a transporter .....	5-1
---	-----

### Recovery transport

Towing the tractor.....	5-1
-------------------------	-----

## 6 WORKING OPERATIONS

### Power Take-Off (PTO)

Power Take-Off (PTO) - Overview .....	6-1
Power take-off speeds.....	6-1
Power Take-Off (PTO) operation .....	6-2
Towing attachments .....	6-4

### THREE-POINT LINKAGE

Three-point linkage .....	6-5
Attaching 3-point implements.....	6-6
Lift rods, lower links and top link .....	6-7

### Hydraulic systems

Hydraulic systems - Check .....	6-9
Position control operation .....	6-10
Draft Control Operation.....	6-10
Combined position and Draft control .....	6-10
Float Operation .....	6-11
Lift-O-Matic Button .....	6-11
Sensitivity Control .....	6-12

---

Response Control or Drop rate Control .....	6-12
Diverter valve .....	6-13

## WHEEL TRACK ADJUSTMENT

Front wheel track adjustment.....	6-14
Hydrostatic Steering .....	6-16
Mechanical Steering .....	6-16
Front wheels toe-in .....	6-17
Rear wheel track adjustment .....	6-18

## BALLASTING AND TIRES

Ballasting of Tires – Selecting ballast .....	6-19
Rear wheel weights.....	6-20
Front Weights.....	6-20
Liquid Ballast .....	6-21
Tire inflation.....	6-21
Tire inflation pressures .....	6-23

## 7 MAINTENANCE

### General information

Introduction .....	7-1
Safety precautions.....	7-1
During the first 50 hour operation .....	7-1
The First 50 Hours Service .....	7-1
Preventing System Contamination .....	7-2
Flexibility of Maintenance Intervals.....	7-2
Maintenance chart .....	7-2
Fuelling The Tractor .....	7-2
Fuel Requirements .....	7-2
Diesel fuel quality specifications.....	7-2
Fuel storage .....	7-3
Filling the fuel tank .....	7-4
Guards.....	7-5

### Maintenance planning

Maintenance chart.....	7-6
------------------------	-----

### Every 10 Hours of Operation or Daily (Whichever Occurs First)

Check engine oil level .....	7-7
Engine cooling system - Check.....	7-7
Air pre-cleaner - Cleaning .....	7-8
Air Cleaner Oil Bowl- Clean .....	7-8
Hydrostatic steering oil level.....	7-8
Drain water from Fuel Filter .....	7-9
Water Separator .....	7-9

### EVERY 50 HOURS

Change the fuel filter .....	7-10
------------------------------	------

---

Clutch pedal free play - check .....	7-10
Brake pedal free play - check .....	7-11
Wheel nut and bolt torque .....	7-11
Tire pressure and condition.....	7-11
Fan / alternator belt tension adjust .....	7-12
Maintenance - Grease.....	7-12
Battery electrolyte level - Check.....	7-14
Fuel Injection Pump Oil level-Check .....	7-15
Hydraulic oil filter .....	7-15
Front axle housing oil level - 4WD.....	7-15

## EVERY 300 HOURS

Fuel filters - Replace .....	7-16
Fuel Feed Pump Strainer- Clean .....	7-16
Fuel Injection Pump Oil-Change .....	7-17
Change engine oil .....	7-17
Engine oil filter - Replace.....	7-18
Transmission/hydraulics oil level .....	7-18
PTO clutch lever free play .....	7-18
Front axle reduction hubs - 4WD .....	7-19
4WD front axle swivel bearings.....	7-19
Drive shaft sleeve for 4WD front axle connection .....	7-20

## EVERY 600 HOURS

Fuel filters - Replace .....	7-20
Transmission Oil Breather .....	7-21
Clean, Re-grease and Adjust Front Wheel Bearing .....	7-21
Fuel injectors - servicing .....	7-21
Toe-in adjustment.....	7-22

## EVERY 1200 HOURS

Transmission/Hydraulic oil - change fluid .....	7-22
Radiator - Drain fluid .....	7-22
Steering - Change fluid .....	7-24
Check the valve tappet clearance .....	7-24
Front axle housing oil level - 4WD.....	7-24
Draining the oil from the front axle final drive hub - 4WD .....	7-25

## GENERAL MAINTENANCE

Fuel injection system - Bleed.....	7-25
Engine idle speed - adjust.....	7-25
Headlight - Adjust.....	7-26
Work light - Check .....	7-26
Bulb replacement.....	7-26
Fuse replacement .....	7-27
Battery charge - Check .....	7-28

---

## Vehicle Storage

Tractor storage .....	7-30
-----------------------	------

## 8 TROUBLESHOOTING

### Fault code resolution

Maintenance - Troubleshooting.....	8-1
------------------------------------	-----

## 9 SPECIFICATIONS

Dimensions .....	9-1
Engine .....	9-3
Cooling System.....	9-4
Clutch - Technical Data .....	9-4
Power Take-Off (PTO) - Technical Data .....	9-4
Three-point linkage .....	9-4
Hydraulic System .....	9-4
Electrical systems - Technical Data .....	9-4
Steering - Capacity .....	9-5
Brakes .....	9-5
Transmission - Speeds .....	9-6
Lubrication and maintenance .....	9-8

---

# 1 - GENERAL INFORMATION

## General information and safety

### To the owner

#### General

This Manual has been prepared to assist you in the correct procedure for running in, driving and operating and for the maintenance of your new tractor. Your tractor, which is designed to power and propel itself, is intended for use in normal and customary agricultural applications.

Read this manual carefully and keep it in a convenient place for future references. If at any time you require advice concerning your tractor, do not hesitate to contact your authorised dealer. He has company trained personnel, genuine manufacturers' parts and the necessary equipment to carry out all your service requirements.

Your tractor has been designed and built to give maximum performance, economy and ease of operation under a wide variety of operating conditions. Prior to delivery, the tractor was carefully inspected, both at the factory and by your dealer to ensure that it reaches you in optimum condition. To maintain this condition and trouble-free operation, it is important that the routine services, as specified in "Maintenance" Section of this manual, are carried out at the recommended intervals.

#### Cleaning the tractor

While cleaning the tractor, particularly when using a high pressure tractor washing equipment, precaution has to be taken to safeguard electrical or electronic components and connections. Pressure generated by some of these machines is such that complete protection against water ingress cannot be guaranteed. While washing the tractor, using a high pressure washing machine, do not stand too close to the tractor and avoid directing the jet at electrical connections, breathers, seals, filler caps, etc. Never direct a cold water jet at a hot engine or exhaust.

#### Safety

See 2-1 to ensure your safety and the safety of others. Read the safety precautions and follow the advice offered before operating the tractor.

### First 50 hour service

After you have operated the tractor for **50 h**, take your tractor, together with warranty booklet to your dealer. He will then perform the manufacturer recommended **50 h** service and complete the service report.

**NOTE:** Make sure the completion of the coupon and signature of service manager or dealer.

### Service parts

It should be pointed out that genuine parts have been examined and approved by the company. The installation and/or usage of 'non-genuine' products could have negative effects upon the design characteristics of your tractor and thereby affect its safety. The company is not liable for any damage caused by the use of 'non genuine' parts and accessories. Only genuine NEW HOLLAND replacement parts should be used. Use of non-genuine parts may invalidate legal approvals associated with this product. It is prohibited to carry out any modifications to the tractor unless specifically authorised, in writing, by the After Sales Service department of the Company.

### Warranty

Your tractor is warranted according to the current legislation in our country and with contractual agreements reached with the dealer at the time of sale. However, the warranty is no longer valid if the rules and instructions for the use and maintenance of the tractor described in this manual are not observed. For more details on warranty, please refer warranty booklet supplied along with this manual.

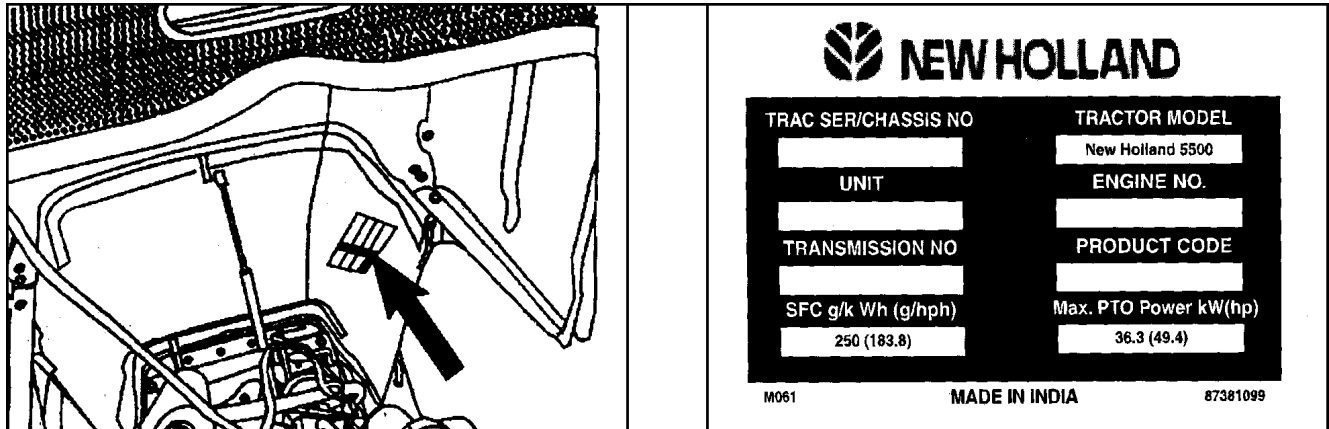
**NOTE:** Reference positions (Left / Right / Front / Rear) of components and decals indicated in this operator's manual taken with a view when operator is seated on Operator Seat.

## Product identification

### Vehicle Identification Plate (VIP)

(Location – Under the front hood on the left-hand side)

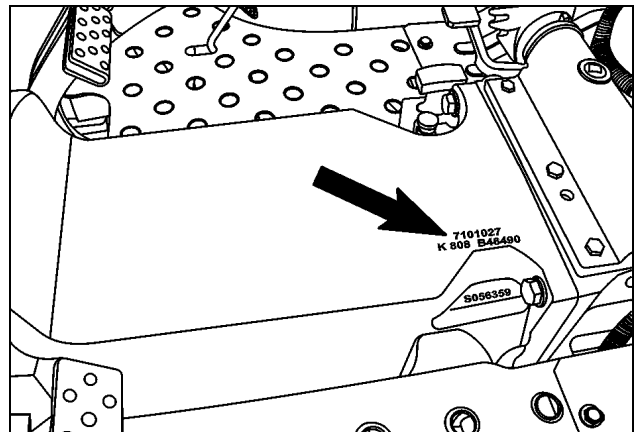
The first line represents tractor serial chassis number and model, while the second line represents unit code and engine serial number followed by transmission number and product code.



GNIL13TR00001AA 1

### Vehicle Identification Number (VIN)

The tractor serial number, unit code and engine number are stamped on the top of the clutch housing. These numbers are also repeated on the VIP reproduced above.

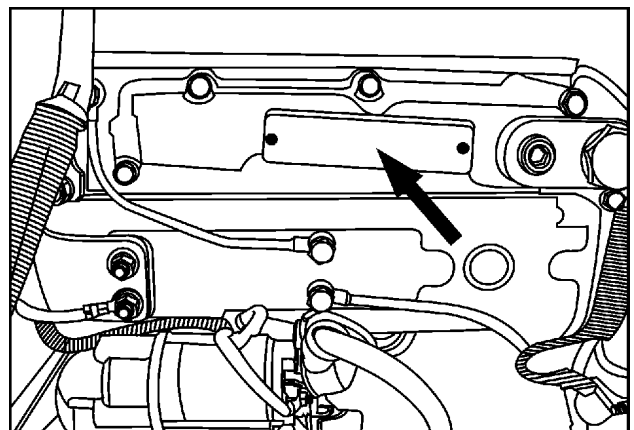


GNIL13TR00002AA 2

### Engine identification

The engine serial number stamped on right side of the engine cylinder block. Record the engine serial number below for quick reference.

Engine serial no.—



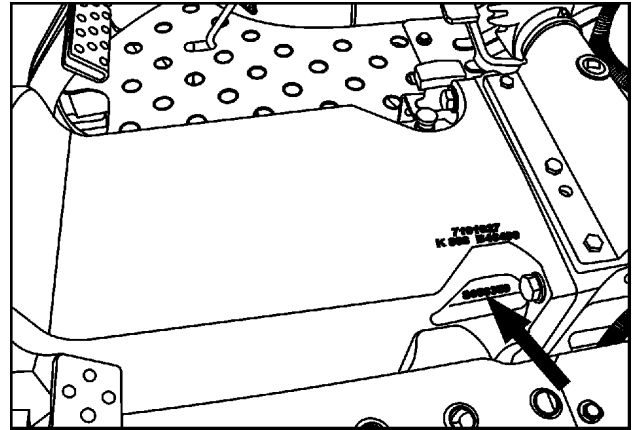
GNIL13TR00003AA 3



## Transmission identification

The serial no. is stamped on right side of transmission housing below driver seat. This information is repeated on the VIP. Record the transmission serial number below for quick reference.

Transmission serial no.— \_\_\_\_\_



GNIL13TR00004AA 4

## Ecology and the Environment

Soil, air and water are vital factors that impact agriculture and life in general. Where legislation does not yet rule the treatment of some of the substances which are required by advanced technology, common sense should govern the use and disposal of products of a chemical and petrochemical nature.

The following are recommendations which may be of assistance:

- Become acquainted with and ensure that you understand the legislation applicable to your country.
- Where no legislation exists, obtain information from suppliers of oils, filters, batteries, fuels, cleaning agents, etc., with regard to their effect on man and nature and how to safely store, use and dispose off these substances.

### Helpful hints

1. Avoid filling tanks using open containers or inappropriate pressurized fuel delivery systems which may cause excessive spillage
2. Avoid filling tanks using open containers or inappropriate pressurized fuel delivery systems which may cause excessive spillage them contain substances which can be harmful to your health.
3. Modern oils contain additives. Do not burn contaminated fuels and/or waste oils in ordinary heating systems.
4. Avoid spillage while draining used engine coolant mixtures, engine, gearbox and hydraulic oils, brake fluids, etc. Do not mix drained brake fluids or fuels with lubricants. Store them safely until they can be disposed off in a proper way to comply with local legislation.
5. Modern coolant mixtures, i.e. antifreeze and other additives, should be replaced every 12 months or 1200 Hours. They should not be allowed to get into the soil but should be collected and disposed off safely.
6. Repair any leaks or defects in the engine cooling or hydraulic system immediately.
7. Repair any leaks or defects in the engine cooling or hydraulic system immediately.
8. Protect hoses during welding as penetration of weld splatter may burn a hole or weaken them, causing the losses of oil, coolant etc.

## 2 - SAFETY INFORMATION

### Safety rules

A careful operator is the best operator. Most accidents can be avoided by observing certain precautions. To help prevent accidents, read and take the following precautions before driving, operating or servicing the tractor. Equipment should be operated only by those who are responsible, trained & authorized to do so.

### Precautionary statements

Throughout this manual you will see text, preceded by the words NOTE, ATTENTION, CAUTION, WARNING or DANGER. Such text has the following significance

### Machine Safety

**NOTE:** This text stresses a correct operating technique or procedure.

**NOTICE:** This text informs the reader about something that he needs to know to prevent minor machine damage if a certain procedure is not followed

### Personal safety

#### ⚠ CAUTION ⚠

The word CAUTION is used where a safe behavioural practice, according to operating & maintenance instructions and common safety practices will protect the operator and others from accident involvement.

#### ⚠ WARNING ⚠

The word WARNING denotes a potential or hidden hazard which could possibly cause serious injury. It is used to warn.

#### ⚠ DANGER ⚠

The word DANGER denotes a forbidden practice in connection with a serious hazard

Failure to follow the CAUTION, WARNING and DANGER instructions may result in serious injury to body or even death.

### THE TRACTOR

Throughout this manual you will see text, preceded by the words NOTE, ATTENTION, IMPORTANT, CAUTION, WARNING or DANGER. Such text has the following significance:

1. Read this Operator's Manual carefully before using the tractor. Lack of operating knowledge can lead to accidents.
2. Read this Operator's Manual carefully before using the tractor. Lack of operating knowledge can lead to accidents.
3. To prevent falls, use the hand rails and step plates while getting on and off the tractor. Keep steps and platform clear of mud and debris
4. Replace all missing, illegible or damaged safety decals.
5. Keep safety decals free of dirt or grime.
6. Do not permit anyone, except the operator to ride the tractor. It is unsafe for extra passengers to travel.
7. Always keep children away from the tractor and farm machinery
8. You or any body else should not modify or alter tractor or any of its components without consulting your authorized dealer.
9. Install all guards before starting the engine or operating the tractor.
10. Tractor wheels are very heavy. Handle with care and ensure while storing that they should not topple down and cause injury to anybody.



1D0B2014015 1

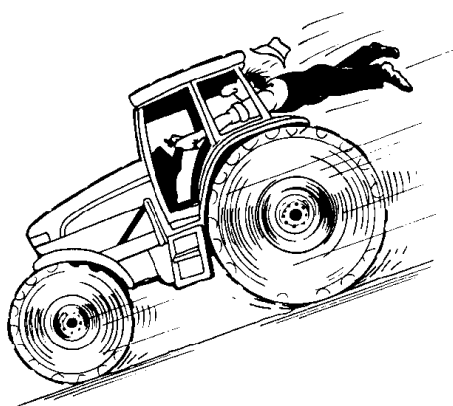
## Driving the tractor

1. Always sit in the driver's seat while starting or driving the tractor.
2. When driving on public roads, have consideration for other vehicles on the road. Keep tractor in left lane (slow moving traffic lane) so as to allow traffic to pass besides you. Do not exceed the legal speed limit set for agricultural tractors.
3. Dip the tractor lights when meeting a vehicle at night. Make sure the lights are adjusted to prevent blinding the driver of an oncoming vehicle.
4. Reduce speed before turning or applying the brakes. Brake both wheels simultaneously when making an emergency stop. Ensure that both brake pedals are locked together when travelling at road speeds or when on public roads. Ensure correct operation of trailer brakes.
7. Do not switch off the engine on slope to avoid engine over speeding or engine breakage condition.
8. Any towed vehicle whose total weight exceeds that of the towing tractor must be equipped with brakes for safe operation.
9. Never try to apply the differential lock while turning. When engaged, the differential lock will prevent the tractor from turning.
10. Always check overhead clearance, specially when transporting the tractor. Watch where you are going, specially at row ends, on roads, around trees and low overhanging obstacles.
11. To avoid overturns, drive the tractor with care and at speeds compatible with safety, specially when operating over rough ground, when crossing ditches or slopes and when turning corners

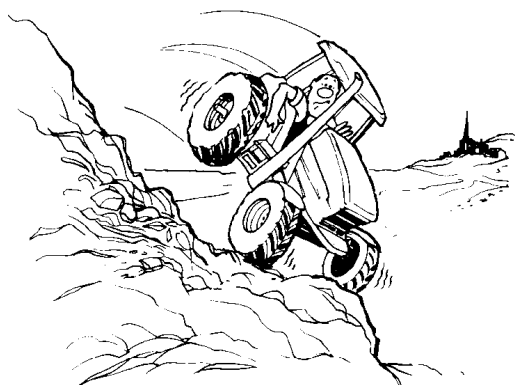


1D0B2014016 1

5. Use extreme caution and avoid hard application of the tractor brakes when towing heavy loads at road speeds.
6. Keep the tractor in the same gear when going downhill as it would have been when going uphill. Do not coast or freewheel down hills.



1D0B2014017 2



1D0B2014018 3

12. Use extreme caution when operating on steep slopes
13. If tractor tyres are stuck/slipping in forward, reverse the tractor to prevent overturning.

## Operating the tractor

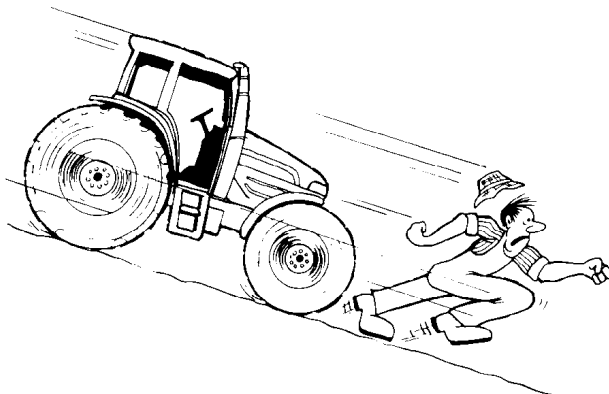
1. Apply the parking brake, place the PTO control in the 'OFF' position, the lift control lever in the down position, and the transmission levers in neutral before starting the tractor.
2. Do not start the engine or operate controls while standing beside the tractor. Always sit on the tractor seat when starting the engine or operating the controls.

3. Do not bypass the transmission neutral start switches. Consult your authorized dealer if your neutral start controls malfunction.
4. Use jump leads only in the recommended manner. Improper use can result in a tractor run away on its own or causing damage to the battery



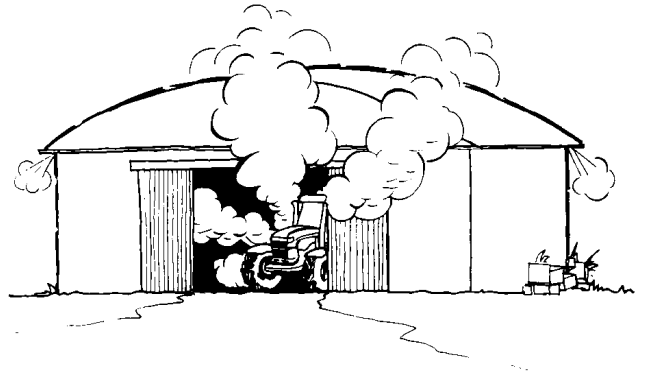
1D0B2014019 1

5. Avoid accidental contact with the gear shift levers when engine is running. Unexpected tractor movement can occur due to such contact
6. Do not get off the tractor while it is in motion.
7. Before leaving the tractor, park the tractor on level ground. Apply parking brake, lower down the attached implement to the ground, disengage PTO and stop the engine
8. Do not park the tractor on a steep incline.



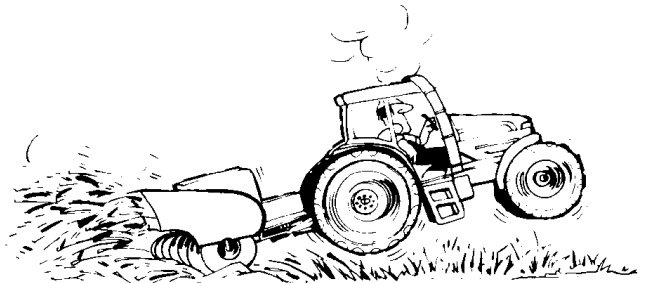
1D0B20140110 2

9. Do not operate the tractor with parking brake applied.
10. Do not run the tractor engine in an enclosed building without adequate ventilation. Exhaust fumes are toxic and can cause death.



1D0B20140111 3

11. Pull only from the pick-up hitch, swinging drawbar or the lower link drawbar in the lowered position. Use only a drawbar pin that locks in place. Pulling from the tractor rear axle or any point above the axle may cause the tractor to overturn.
12. Always select Position Control while attaching or transporting equipment. Be sure hydraulic couplers are properly mounted so that they can be disconnected safely in case of accidental detachment of the implement.



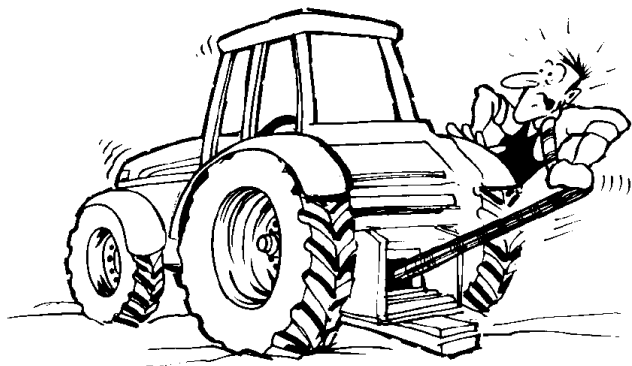
1D0B20140112 4

13. If front end of the tractor tends to rise when heavy implements are attached to the three-point hitch, install front end weights. Do not operate the tractor with a light front end.
14. Engage the clutch slowly when driving out of a ditch, gully or up a steep hillside. Disengage the clutch promptly if the front wheels rise off the ground.
15. For any attachment or accessories ensure following:-
  - A. Are approved for use with the tractor,
  - B. Are correctly installed
  - C. Operated and maintained in accordance to instructions issued by equipment or accessories manufacture
16. Remember that your tractor, if abused or incorrectly used, can be dangerous and become a hazard both to the operator and by-standers. Do not overload or operate with attached equipment which is unsafe, not designed for the particular task or is poorly maintained.
17. Do not leave implement in the raised position when the vehicle is parked or is left unattended.

18. Do not leave implement in the raised position when the vehicle is parked or is left unattended.
19. Always wear a protective mask when working with toxic spray chemicals. Follow the directions on the chemical container

### Operating the Power Take-Off (PTO)

1. After operation of PTO driven implement is over, shut off the engine, switch off the PTO and wait until the PTO stops before getting off the tractor.
2. Do not wear loose clothing while operating the power take-off or specially when near rotating implement.
3. While operating stationary PTO driven implement, always apply the tractor parking brake and choke the rear wheels front and back.
4. To avoid injury, do not clean, adjust, unclog or service PTO driven implement when the tractor engine is running. Ensure that the PTO is switched off.



1D0B20140113 1



1D0B20140114 2

5. Make sure that PTO guard is in position all the time. Always place or put back the PTO cap when the PTO is not in use.

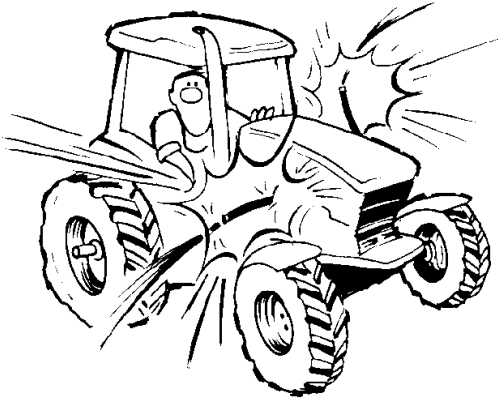
### Servicing the tractor



1D0B20140115 1

1. The cooling system operates under pressure. It is dangerous to remove the radiator cap when the system is hot or when engine is running. Always turn the cap slowly to the first stop, and allow the pressure to escape before removing the cap fully.
2. Do not smoke while refuelling the tractor. Keep away from open flames.
3. Keep the tractor and implement, particularly brakes and steering, maintained in a reliable and satisfactory condition to ensure your safety and to comply with legal requirements.
4. Stop the engine before performing any service on the tractor.
5. To prevent fire or explosion, keep open flames away from battery or cold weather starting aids. To prevent sparks which could cause explosion, use jumper cables according to instructions.
6. Hydraulic fluid in hydraulic system and fuel in the injection system operate under high pressure. Escaping hydraulic fluid or fuel under pressure can penetrate the skin causing serious injury. Unqualified persons should not disassemble or attempt to adjust a pump, injector, nozzle or any other part of the fuel injection or hydraulic systems. Failure to follow these instructions can result in serious injury.

- Do not use your hand to check for leaks. Use a piece of cardboard or paper to search for leaks.
- Stop the engine and relieve pressure before connecting or disconnecting lines.
- If fluid gets injected into the skin, obtain medical attention immediately otherwise it can result into gangrene.



1D0B20140116 2

- Tighten all connections before starting the engine or pressurizing lines.

7. You (or any body else) should not modify or alter tractor or any of its components without consulting your authorized dealer.
8. Continuous long term contact with used engine oil may cause skin cancer. Avoid prolonged contact with used engine oil. Wash skin promptly with soap and water.
9. Keep tractor clean and properly maintained.
10. Dispose off all drained fluids and removed filters properly.
11. Tractor wheels are very heavy. Handle with care and ensure while storing that they should not topple down and cause injury to anybody.

### Diesel fuel

1. Under no circumstances should gasoline, alcohol or blended fuels be added to diesel fuel. These combinations can create an explosion hazard. In a closed container such as a fuel tank these blends are more explosive than pure gasoline. Do not use these blends.
2. Never operate without fuel cap. Also it is recommended not to refuel when the engine is running or is hot.
3. Do not smoke while refuelling the tractor or when standing near fuel. Always keep away from open flames.
4. Do not fill fuel tank to its full capacity . Fill only to the bottom of the filler neck to allow room for expansion.
5. Wipe up spilled fuel immediately. Always secure the fuel tank cap tightly.
6. If the original fuel tank cap is lost, replace it with an approved cap. A non-approved cap may not be safe.
7. Never use fuel for cleaning purpose



1D0B20140117 1

Thank you so much for reading.  
Please click the “Buy Now!”  
button below to download the  
complete manual.



After you pay.

You can download the most  
perfect and complete manual in  
the world immediately.

Our support email:

[ebooklibonline@outlook.com](mailto:ebooklibonline@outlook.com)