

ORIGINAL INSTRUCTIONS

**FARMALL® I 10A**

**FARMALL® I 20A**

**FARMALL® I 25A**

**FARMALL® I 40A**

**Tier 3**

**Tractor**

# OPERATOR'S MANUAL

**Part number 48042568**

2<sup>nd</sup> edition English

August 2016

*Replaces part number 48020165*



# Contents

---

## 1 GENERAL INFORMATION

Note to the owner.....	1-1
Note to the owner.....	1-2
Intended use.....	1-3
Electro-Magnetic Compatibility (EMC) .....	1-4
Product identification .....	1-5
Operator's manual storage on the machine .....	1-7
Machine orientation.....	1-8
Machine components.....	1-9

## 2 SAFETY INFORMATION

Safety rules and signal word definitions .....	2-1
Safety rules.....	2-2
Ecology and the environment .....	2-12
Safety features .....	2-13
Safety signs .....	2-16
Instructional signs .....	2-29

## 3 CONTROLS AND INSTRUMENTS

### ACCESS TO OPERATOR'S PLATFORM

Proper entry and exit .....	3-1
-----------------------------	-----

### OPERATOR'S SEAT

Operator seat adjustments .....	3-3
Seat belt operation .....	3-7

### FORWARD CONTROLS

Instrument panel.....	3-8
Front console .....	3-9
Foot pedals .....	3-11

### LEFT-HAND SIDE CONTROLS

Power Take-Off (PTO).....	3-13
Parking brake.....	3-15
Door and window operation .....	3-16
Storage .....	3-16

### RIGHT-HAND SIDE CONTROLS

Transmission controls .....	3-17
Identify hydraulic remote control valves .....	3-19
Hydraulic controls - Tractors equipped with Sohipren remote control valves .....	3-21
Remote control valve control lever - Control identification - Tractors equipped with Sohipren remote control valves .....	3-23

---

Hydraulic controls - Tractors equipped with Bosch remote control valves .....	3-26
Right-hand console .....	3-29
Fuses and relays location .....	3-30
Fuse location with cab .....	3-31
Relay location with cab .....	3-33
Fuse and relay location with Roll Over Protection System (ROPS) .....	3-34
Door and window operation .....	3-36

## REARWARD CONTROLS

Rear window operation .....	3-37
Rear window wiper .....	3-37

## OVERHEAD CONTROLS

Climate controls .....	3-38
Cab air louvers .....	3-38
Sun shades .....	3-39
Radio or audio system .....	3-40
Dome light .....	3-40

## EXTERIOR CONTROLS

Remote control valves - Tractors equipped with Sohipren remote control valves ....	3-41
Remote control valves - Tractors equipped with Bosch remote control valves .....	3-42
External Hydraulic Power Lift (HPL) controls .....	3-43

# 4 OPERATING INSTRUCTIONS

## COMMISSIONING THE UNIT

Run in period of a new machine .....	4-1
Roll Over Protective Structure (ROPS) .....	4-2
Instrument panel .....	4-4
Instrument cluster .....	4-5
Multifunctional light switch .....	4-7
General transmission operation .....	4-8
Identify creeper gear engagement process .....	4-10
Creeper gears .....	4-12
Creeper gears .....	4-15
Creeper gears .....	4-23
Four-Wheel Drive (4WD) .....	4-26
Differential lock .....	4-27
Hydraulic system .....	4-28
Hydraulic remote control valves - Tractors equipped with Sohipren remote control valves .....	4-30
Hydraulic remote control valves - Tractors equipped with Bosch remote control valves .....	4-31
Connecting remote cylinders - Tractors equipped with Sohipren remote control valves .....	4-34
Connecting remote cylinders - Tractors equipped with Bosch remote control valves .....	4-36
Bleeding remote cylinders - Tractors equipped with Sohipren remote control valves .....	4-38
Bleeding remote cylinders - Tractors equipped with Bosch remote control valves ...	4-39
Operating single-acting hydraulic cylinders - Tractors equipped with Sohipren remote control valves .....	4-40

---

Operating single-acting hydraulic cylinders - Tractors equipped with Bosch remote control valves .....	4-41
Operating double-acting hydraulic cylinders - Tractors equipped with Sohipren remote control valves .....	4-42
Operating double-acting hydraulic cylinders - Tractors equipped with Bosch remote control valves .....	4-43
Operating continuous flow hydraulic equipment - Tractors equipped with Bosch remote control valves .....	4-44
Adjusting the drawbar .....	4-46
Hitch operation .....	4-49
Power Take-Off (PTO) operation .....	4-54

## STARTING THE UNIT

Starting the engine .....	4-61
Engine starting aids .....	4-64

## STOPPING THE UNIT

Driving and stopping the tractor .....	4-66
Hydraulic trailer brakes .....	4-68

## MOVING THE UNIT

Steering control.....	4-69
-----------------------	------

## 5 TRANSPORT OPERATIONS

### ROAD TRANSPORT

Basic instructions .....	5-1
--------------------------	-----

### RECOVERY TRANSPORT

Towing the tractor.....	5-2
-------------------------	-----

## 6 WORKING OPERATIONS

### GENERAL INFORMATION

Alternator protection .....	6-1
-----------------------------	-----

## 7 MAINTENANCE

### GENERAL INFORMATION

Maintenance and service schedule.....	7-1
Torque specifications .....	7-3
Standard torque data for hydraulic tubes and fittings .....	7-8
Biodiesel fuel .....	7-10
Fluid capacities and lubricant specifications .....	7-11
Organic Acid Technology (OAT) coolant.....	7-14
Opening the hood .....	7-16
Fueling the machine .....	7-17

---

## MAINTENANCE CHART

Maintenance chart.....	7-18
<b>Warning light on</b>	
Service air filter when warning light illuminates .....	7-20
<b>Every 10 hours or daily</b>	
Engine oil level .....	7-22
Radiator, oil cooler, and condenser.....	7-23
Engine cooling system .....	7-25
Fuel filter water separator .....	7-26
<b>Every 50 hours</b>	
Tire pressure .....	7-27
Transmission, rear axle, and hydraulic system oil level .....	7-28
Front hubs .....	7-29
Four-Wheel Drive (4WD) front axle front pivot .....	7-29
Four-Wheel Drive (4WD) front axle rear pivot .....	7-29
Four-Wheel Drive (4WD) steering cylinders .....	7-30
External shift linkage .....	7-30
Right-hand and left-hand lifter rods.....	7-31
Clutch linkage .....	7-31
Front axle sleeve bearings - Four-Wheel Drive (4WD).....	7-32
External air filter .....	7-33
<b>Every 300 hours</b>	
Engine oil and filter .....	7-34
Front axle oil - Four-Wheel Drive (4WD) .....	7-36
Front hub oil - Four-Wheel Drive (4WD).....	7-37
Roll Over Protective Structure (ROPS).....	7-38
Cab frame hardware.....	7-39
Transmission filter .....	7-40
Parking brake - Adjust.....	7-41
Creeper safety switch - Adjust.....	7-43
<b>Every 600 hours</b>	
Engine air filter - Outer element .....	7-46
Fuel filter water separator .....	7-47
<b>Every 1200 hours or annually</b>	
Transmission oil .....	7-48
Front axle oil - Four-Wheel Drive (4WD) .....	7-50
Front hub oil - Four-Wheel Drive (4WD).....	7-51

---

## Every 1200 hours or two years

Engine air filter - Inner element.....	7-52
External air filter .....	7-53

## Every 3600 hours or four years

Engine cooling system .....	7-54
-----------------------------	------

## As required

Windshield washer fluid level.....	7-56
Headlights - adjust.....	7-57
Headlight bulb replacement .....	7-58
Work light bulb replacement.....	7-59
Rear light bulb replacement .....	7-60
Rocker switch light bulbs .....	7-61
Steering stops .....	7-62
Steering toe in .....	7-63
Parking brake - Adjust.....	7-65

## Fuse and relay locations

Fuses and relays .....	7-67
------------------------	------

## STORAGE

Preparing for storage .....	7-72
Removal from storage .....	7-73

# 8 TROUBLESHOOTING

## SYMPTOM(S)

Engine .....	8-1
Transmission .....	8-2
Electrical system .....	8-2
Hydraulic system .....	8-3
Hydraulic remote control valves .....	8-3
Three-point hitch .....	8-4
Brakes .....	8-4
Cab .....	8-4

# 9 SPECIFICATIONS

General dimensions .....	9-1
Weight .....	9-3
Engine specifications .....	9-4
Cooling system specifications .....	9-5
Available transmissions .....	9-5
Travel speeds.....	9-6
Maximum side slope operation .....	9-21
Power Take-Off (PTO) specifications.....	9-21
Hydraulic system specifications .....	9-21

---

Three-point linkage general specifications .....	9-21
Remote control valve specifications .....	9-22
Brake specifications .....	9-22
Steering general specifications .....	9-22
Electrical system specifications .....	9-22
Fluid capacities and lubricant specifications .....	9-23
Tire load and inflation charts .....	9-26
Tractor ballasting .....	9-31
Liquid ballast .....	9-34
Front wheel tread settings .....	9-35
Rear wheel tread settings - Flange axle .....	9-38
Rear wheel tread settings - Bar axle .....	9-40
Dual rear wheels .....	9-46
Front axle oscillation .....	9-50

## 10 FORMS AND DECLARATIONS

Delivery report - Owner copy .....	10-1
Delivery report - Dealer copy .....	10-2

# 1 - GENERAL INFORMATION

## Note to the owner

This manual contains information concerning the adjustment and maintenance of your new equipment. You have purchased a dependable machine, but only by proper care and operation can you expect to receive the performance and long service built into this equipment. Please have all operators read this manual carefully and keep it available for ready reference.

**ATTENTION:** *The engine and fuel system on your machine is designed and built to government emission standards. Tampering by dealer, customers, operators, and end users is strictly prohibited by law. Failure to comply could result in government fines, rework charges, invalid warranty, legal action, and possible confiscation of the machine until rework to original condition is completed. Engine service and/or repairs must be done by a certified technician only!*

Your CASE IH dealer will instruct you in the general operation of your new equipment. (Refer to the 'Delivery Report' at the back of this manual.) Your dealer's staff of factory-trained service technicians will be glad to answer any questions that may arise regarding the operation of your machine.

Case IH Max Service is also available. Go to [www.caseih.com](http://www.caseih.com).

Your CASE IH dealer carries a complete line of genuine CASE IH service parts. These parts are manufactured and carefully inspected to insure high quality and accurate fitting of any necessary replacement parts. Be prepared to give your dealer the model and product identification number of your new equipment when ordering parts. Locate these numbers now and record them below. Refer to the 'General Information' section of this manual for the location of the model and product identification numbers of your machine.

**Please record the following information**

**Model**

---

**Product Identification Number (PIN)**

---

**Date purchased**

---

**Header width (as applicable)**

---

**Engine model (as applicable)**

---

**Engine PIN (as applicable)**

---



This is the safety alert symbol. It is used with and without signal words to alert you to potential personal injury hazards. Obey all safety messages that follow this symbol to avoid possible death or injury.

### **⚠ WARNING**

Illustrations in this manual may show protective shielding open or removed to better illustrate a particular feature or adjustment.

Replace all shields before operating the machine.

Failure to comply could result in death or serious injury.

W0012A

## Improvements

CNH Industrial America LLC is continually striving to improve its products. We reserve the right to make improvements or changes when it becomes practical and possible to do so, without incurring any obligation to make changes or additions to the equipment sold previously.



## Note to the owner

This manual contains information concerning the adjustment and maintenance of your new equipment. You have purchased a dependable machine, but only by proper care and operation can you expect to receive the performance and long service built into this equipment. Please have all operators read this manual carefully and keep it available for ready reference.

Your CASE IH dealer will instruct you in the general operation of your new equipment. (Refer to the 'Delivery Report' at the back of this manual.) Your dealer's staff of factory-trained service technicians will be glad to answer any questions that may arise regarding the operation of your machine.

Your CASE IH dealer carries a complete line of genuine CASE IH service parts. These parts are manufactured and carefully inspected to insure high quality and accurate fitting of any necessary replacement parts. Be prepared to give your dealer the model and product identification number of your new equipment when ordering parts. Locate these numbers now and record them below. Refer to the 'General Information' section of this manual for the location of the model and product identification numbers of your machine.

**Please record the following information**

**Model**

---

**Product Identification Number (PIN)**

---

**Date purchased**

---

**Header width (as applicable)**

---

**Engine model (as applicable)**

---

**Engine PIN (as applicable)**

---



This is the safety alert symbol. It is used with and without signal words to alert you to potential personal injury hazards. Obey all safety messages that follow this symbol to avoid possible death or injury.

### **⚠ WARNING**

**Illustrations in this manual may show protective shielding open or removed to better illustrate a particular feature or adjustment.**

**Replace all shields before operating the machine.**

**Failure to comply could result in death or serious injury.**

W0012A

## Improvements

CNH Industrial America LLC is continually striving to improve its products. We reserve the right to make improvements or changes when it becomes practical and possible to do so, without incurring any obligation to make changes or additions to the equipment sold previously.

## Intended use

This tractor, with standard equipment and authorized attachments, is intended to be used for customary farming and related agriculture operations. Farming implements and attachments for loading and moving materials can be used on the tractor where recommended and approved by CASE IH. Installation of utility (dozer) blades, tile plows, or push bars on the tractor is not recommended. Any tractor damage resulting from the installation and/or use of such equipment is not covered by the tractor warranty.

Though the machine is designed to perform in most agricultural conditions, there may be a number of combinations for which there is severe degradation of performance of the machine or systems thereof. The machine performance depends on a number of limitative parameters, such as weather and terrain conditions, agricultural demands, and harvesting demands. If you notice degradation of performance, contact your CASE IH dealer for assistance. They may have useful information for improvements, or a kit may be available to enhance the performance.

Prior to delivery, all machines are carefully inspected by your local authorized CASE IH dealer, ensuring that the machine reaches the user in perfect condition. To maintain the tractor in this condition and ensure trouble-free operation, the routine maintenance described in section **7-18** of this manual must be carried out at the specified intervals.

## Prohibited usage

Consult an authorized CASE IH dealer about changes, additions, or modifications that can be required for this machine to comply with various regulations and safety requirements. Unauthorized modifications will cause serious injury or death. Anyone making such unauthorized modifications is responsible for the consequences.

**NOTICE:** *DO NOT use this machine for any purpose or in any manner other than as described in the manual, decals, or other product safety information provided with the machine. These materials define the intended use of the machine.*

**ATTENTION:** *The engine and fuel system on your machine is designed and built to government emissions standards. Tampering by dealer, customers, operators, and users is strictly prohibited by law. Failure to comply could result in government fines, rework charges, invalid warranty, legal action, and possible confiscation of the machine until rework to original condition is completed. Engine service and/or repairs must be done by a certified technician only!*

**NOTICE:** *All persons who will be operating this tractor shall possess a valid local vehicle operating permit and/or other applicable local age work permits.*

## Electro-Magnetic Compatibility (EMC)

Interference may arise as a result of add-on equipment that may not necessarily meet the required standards. As such interference can result in serious malfunction of the unit and/or create unsafe situations, you must observe the following:

- The maximum power of emission equipment (radio, telephones, etc.) must not exceed the limits imposed by the national authorities of the country where you use the machine
- The electro-magnetic field generated by the add-on system should not exceed **24 V/m** at any time and at any location in the proximity of electronic components
- The add-on equipment must not interfere with the functioning of the on board electronics

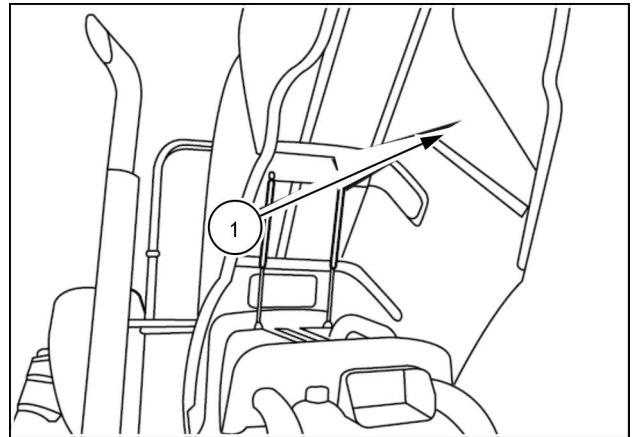
Failure to comply with these rules will render the CASE IH warranty null and void.

## Product identification

The machine and major components are identified with Product Identification Number (PIN) plates. You should supply the machine PIN plate data to your CASE IH dealer when requesting parts or service. The PIN is also used to identify the machine in case of theft.

### Product Identification Number (PIN) plate

The PIN plate **(1)** is located on the left-hand side on the inside of the engine hood.



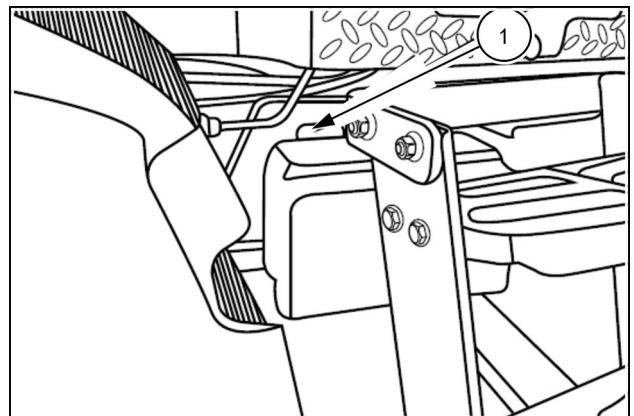
NHIL12TR00034AA 1

CNH Industrial S.A de C.V. <b>MADE IN MEXICO</b>		
TRACTOR NUMBER	MODEL	UNIT
<input type="text"/>	<input type="text"/>	<input type="text"/>
ENGINE	TRANSMISSION	REAR AXLE
<input type="text"/>	<input type="text"/>	<input type="text"/>
HYDRAULIC PUMP	HYDRAULIC LIFT	ENGINE DATE
<input type="text"/>	<input type="text"/>	<input type="text"/>
SPECIAL ORDER	MAKE: <b>CASE IH</b> AGRICULTURE	
<input type="text"/>		

47681951

NHIL14TR00005AA 2

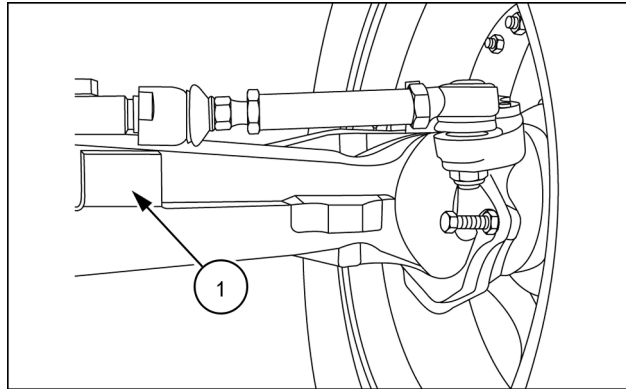
The PIN **(1)** is also found on the right-hand side of the transmission housing behind the battery.



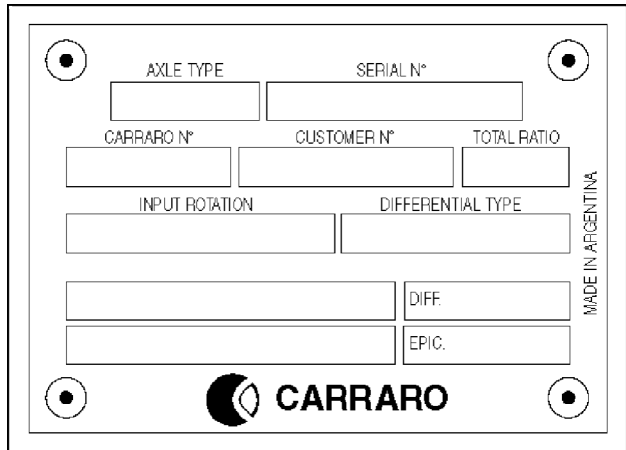
NHIL12TR00035AA 3

## Four-Wheel Drive (4WD) front axle Product Identification Number (PIN) plate

The standard duty Four-Wheel Drive (4WD) front axle PIN plate (1) is located on the rear right-hand side of the front axle housing.

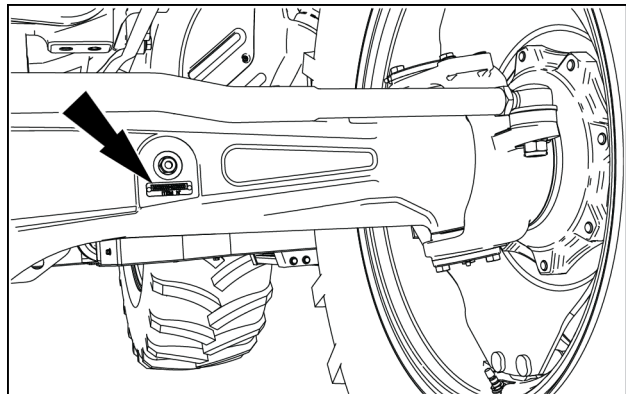


RCPH09TTS058AAD 4

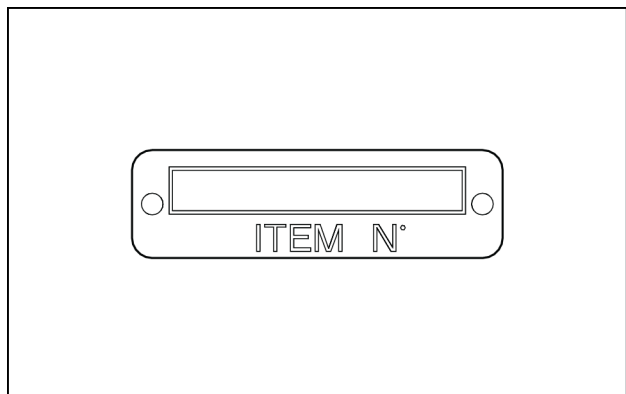


RCPH10TTS013AAD 5

The heavy duty 4WD front axle serial number plate is located on the front left-hand side of the front axle housing.



NHIL14TR00900AA 6



NHIL14TR00901AA 7



Our support email:

[ebooklibonline@outlook.com](mailto:ebooklibonline@outlook.com)