

Magnum 235
Magnum 260
Magnum 290
Magnum 315
Magnum 340
Tractor

OPERATOR'S MANUAL

Part number 48050395

1st edition English

August 2016

Replaces part number 84417595



Contents

1 GENERAL INFORMATION

Tractor intended use.....	1-1
Note to the Owner.....	1-2
Manual storage.....	1-2
Product identification.....	1-2
Component location.....	1-4
International symbols.....	1-5

2 SAFETY INFORMATION

Safety rules.....	2-1
Safety rules.....	2-1
Safety rules - General.....	2-2
Safety rules - Air conditioning system.....	2-2
Safety rules - Basic operating.....	2-3
Safety rules - Battery.....	2-3
Safety rules - Driving on public roads.....	2-4
Safety rules - Electrical storm safety.....	2-4
Safety rules - Fire prevention.....	2-4
Safety rules - General maintenance.....	2-5
Safety rules - Hazardous chemicals.....	2-6
Safety rules - Implements, tools and trailers.....	2-6
Safety rules - Instructional seat.....	2-7
Safety rules - Mounting and dismounting.....	2-7
Safety rules - Operator presence system.....	2-8
Safety rules - PTO operation.....	2-8
Safety rules - Roll over and tip over.....	2-8
Safety rules - Utility power lines.....	2-9
Safety rules - Vehicle vibration.....	2-9
Safety rules - Wheels and tires.....	2-10
Ecology and the environment.....	2-10
Roll over protective structure.....	2-11
Noise levels.....	2-12
Wheel wedges.....	2-13
Safety decals.....	2-13

3 CONTROLS AND INSTRUMENTS

ACCESS TO OPERATOR'S PLATFORM

Tractor access.....	3-1
---------------------	-----

OPERATOR'S SEAT

Overview.....	3-2
Control identification.....	3-3

INSTRUCTOR'S SEAT

Overview	3-6
----------------	-----

FORWARD CONTROLS

Steering column	3-7
Front console	3-10
Pedal controls	3-12

RIGHT-HAND SIDE CONTROLS

Armrest console	3-14
Multi function handle	3-15
Control panel	3-19
Remote valve controls	3-26
Armrest compartment	3-27
Adjusting the armrest console	3-29

REARWARD CONTROLS

Right-hand console	3-31
Automatic temperature controls	3-34
Automatic temperature control system	3-37
Ventilation	3-38

OVERHEAD CONTROLS

Interior lamps	3-40
----------------------	------

EXTERIOR CONTROLS

Fender - Control identification	3-40
---------------------------------------	------

INSTRUMENT CLUSTER

Overview	3-41
Gauges	3-41
Status and warning icons	3-42
Upper display	3-44
Lower display	3-47
Keypad	3-48
Setup menu	3-49
Rear tire radius chart	3-55
Adjust menu	3-56
Performance instrumentation	3-63

4 OPERATING INSTRUCTIONS

COMMISSIONING THE UNIT

Before starting the engine	4-1
----------------------------------	-----

STARTING THE UNIT

Normal engine starting	4-4
Cold temperature operation	4-6

STOPPING THE UNIT

Stopping the engine	4-8
---------------------------	-----

MOVING THE UNIT

Powershift transmission - Safety rules	4-9
Powershift transmission - Operating	4-9
Throttle control - Operating	4-10
Powershift transmission external controls - Control identification	4-11
Instrument cluster - Localization overview	4-13
Driving the vehicle	4-15
Setting default gears	4-20
Automatic productivity management (APM)	4-22
Auxiliary Front Wheel Drive	4-27
Differential lock system	4-31
Ride control	4-34
Constant engine speed	4-36
End of row turn	4-38

5 TRANSPORT OPERATIONS

PREPARING FOR ROAD TRANSPORT

Safe transport speed	5-1
Safety chain	5-1

SHIPPING TRANSPORT

Securing the tractor for shipping	5-2
---	-----

RECOVERY TRANSPORT

Safety rules	5-3
Towing the tractor	5-4

6 WORKING OPERATIONS

GENERAL INFORMATION

Implement connections	6-1
-----------------------------	-----

Two-speed rear Power Take-Off (PTO)

Safety rules	6-2
Connecting the PTO	6-5
Interchangeable PTO shaft	6-6
Reversible PTO shaft	6-11
Rear PTO operation	6-13
Auto PTO operation	6-17

REAR HITCH

Identification	6-20
Link adjustment	6-20

Link adjustment	6-24
Hitch high clearance adjustment	6-27
Sway limiter adjustment	6-29
Lower link block adjustment	6-31
Mechanical float adjustment	6-31
Hitch quick coupler - Category III/IIIN	6-32
Hitch quick coupler - Category IVN	6-37
Hitch operation	6-40
Hitch remote switch operation	6-44
Position control operation	6-45
Load control operation	6-47
Slip control operation	6-48
Hitch set point	6-49

DRAWBARS AND TOWING ATTACHMENTS

Drawbars and towing hitches - Safety rules	6-51
Drawbar capacity/position	6-52
Adjusting the drawbar	6-56

AUXILIARY POWER CONNECTIONS

Auxiliary power and lighting	6-58
Cab power connections	6-59

HYDRAULIC REMOTE CONTROL VALVES

Valve couplers and connections	6-61
Motor return circuit	6-64
Power beyond circuit	6-64
Flow capacity	6-65
Hydraulic transport lock	6-65
Operating the controls	6-66
Remote valve display screens	6-70
Remote hydraulic auto mode	6-73
Auto depth control	6-75

Tractor ballasting

Tire care – Wheels	6-77
Guidelines	6-79
Tire load and inflation charts	6-84
Weights, cast metal and liquid	6-92
Wheel slip and power hop - performance	6-101
Front axle system - Component identification	6-104

MECHANICAL FRONT DRIVE (MFD) AXLES

Tire Combinations and Tread Positions	6-105
Steering and oscillation stops	6-114
Tread and fender settings - standard MFD axles	6-116
Tread and fender settings - heavy duty class 5 MFD axles	6-121

REAR AXLE

Rear wheel installation	6-130
Rear wheel tread settings	6-133

7 MAINTENANCE

GENERAL INFORMATION

Introduction	7-1
Safety rules	7-3
Fuel handling precautions	7-3
Diesel fuel	7-5
Biodiesel - Biodiesel fuel	7-5
Fluids/lubricants	7-8
Opening the hood	7-9
Closing the hood	7-9
Filling the fuel tank	7-10
Tire and rim service	7-10
Tractor jacking points	7-12
Tractor jacking points	7-14
Consumables - Engine oil	7-16
Consumables - Coolant solutions	7-18

MAINTENANCE CHART

Maintenance chart	7-19
-------------------------	------

At warning message display

Engine air filter, primary	7-21
Drain the fuel system water separator	7-26
Transmission oil filter switch	7-27

First 50 hours

First 50 hours	7-30
----------------------	------

Every 10 hours or daily

Engine oil level	7-30
Transmission oil level	7-31
Deaeration tank coolant level	7-31
Deaeration tank - Check	7-32
Fuel pre-filter	7-32

Every 50 hours or weekly

Grease points (Grease fittings)	7-34
Check the tire pressures and the tire condition	7-37
Cleaning the radiators	7-38
Cab air filters	7-38
Cab recirculation air filter – Cleaning	7-40

Every 300 hours

Engine air intake hoses.....	7-41
Weight bolt torque	7-42
Front axle hub oil (4WD) - oil level	7-42
Front axle (4WD) oil level.....	7-43
Transmission oil pressure	7-43
Grease Power Take-Off (PTO) shaft	7-43
Engine oil and filter	7-44
Replace fuel pre-filter.....	7-45
Engine fuel filter	7-48
Engine belts - Check	7-50
Cab air filters activated charcoal	7-50

Every 600 hours

Cab air filter - Replace.....	7-52
Cab recirculation air filter – Check	7-52
Engine coolant hoses and clamps.....	7-53
Fuel injection system - Cleaning	7-55
Front axle hub oil - Change fluid	7-55
Wheel nuts tightening torque	7-56

Every 1200 hours or annually

Engine air filter, primary	7-57
Engine air filter safety element	7-60
Engine air pre filter	7-63
Front axle differential oil	7-64
Drive shaft – Lubricate the drive shaft	7-65
Pneumatic brake system dryer	7-65

Every 1500 hours

Transmission oil	7-67
Transmission oil filter	7-68
Regulated transmission filter	7-68
Change the engine breather filter	7-69

Every 2100 hours

Engine coolant replacement.....	7-73
Engine valves clearance	7-75

Every 3000 hours

Service Fuel Injectors	7-75
Crankshaft damper - Check	7-75

As required

Fuses and Relays	7-75
------------------------	------

Vehicle fire prevention	7-80
Fuel tank vent filter	7-80
Transmission clutch and accumulator	7-81
Engine belts - Replace	7-81
Cab suspension, if equipped	7-83
Remote valve collection bottle	7-84
Cab fabric and carpet	7-84
Seat belt	7-85
Fuel tank - Drain fluid	7-85

STORAGE

Storing the machine	7-86
Preparation for use after storage	7-87

ELECTRICAL SYSTEM

Battery removal and installation	7-88
Auxiliary battery connections	7-90
Headlight - Replace	7-91
Flood and work light	7-94
Work light	7-95
Fender tail light and warning light	7-97
Roof front warning and work light	7-99
Roof rear warning light	7-102
High intensity work light	7-103
Plate light	7-105
Cab interior light - Replace	7-106

8 TROUBLESHOOTING

ALARM(S)

Display warnings overview	8-1
Display warnings - Level 1	8-2
Display warnings - Level 2	8-3
Display warnings - Level 3	8-6
Display warnings - Level 4	8-6

SYMPTOM(S)

Engine symptoms	8-8
Transmission symptoms	8-9
Hydraulic symptoms	8-10
Hitch symptoms	8-10
Brake symptoms	8-10
Cab environment symptoms	8-11
Electrical power system symptoms	8-11

9 SPECIFICATIONS

Fluids and lubricants	9-1
Engine specifications	9-2
Power train specifications	9-3

Operating speeds..... 9-4
Vehicle dimensions and shipping weight 9-8
Maximum operating weight..... 9-10
Electrical system - General specification 9-11
Lamps and bulbs 9-11

10 ACCESSORIES

Fenders installation - Wide fixed fenders 10-1
Farming system displays 10-6
Loader connection and operation 10-7
Trailer brake connections..... 10-8
General accessories..... 10-9

1 - GENERAL INFORMATION

Tractor intended use

Magnum series tractors with standard equipment and authorized attachments, are intended to be used for customary farming, land leveling and related agriculture operations (intended use). Installation of utility (dozer) blades, tile plows, or push bars on the tractor is not recommended. Any tractor damage resulting from the installation and/or use of such equipment is not covered by the tractor warranty.

Consult an authorized dealer or CNH Latin América Ltda on changes, additions or modifications that can be required for this machine to comply with various regulations and safety requirements. Unauthorized modifications will cause serious injury or death. Anyone making such unauthorized modifications is responsible for the consequences.

The tractor is not designed for light/heavy forestry applications; usage is prohibited for forestry applications.

Do not use this machine for any purpose or in any manner other than as described in the manual, decals, or other product safety information provided with the machine. These materials define the machine's intended use.

Use in any other way is considered as contrary to the intended use. The manufacture accepts no liability for any damage or injury resulting from this misuse and these risks must be born solely by the user.

Engine and its systems

The fuel system, exhaust after-treatment system, and engine on your machine are designed and built to government emissions standards. Tampering by dealers, customers, operators, and users is strictly prohibited by law.

Failure to comply could result in government fines, rework charges, invalid warranty, legal action, and possible confiscation of the machine until rework to original condition is completed. Engine service and/or repairs must be done by a certified technician only!

Electro-magnetic compatibility (EMC)

This machine complies strictly with the European Regulations on electro-magnetic emissions. However, interference may arise as a result of add-on equipment which may not necessarily meet the required standards. As such interference can result in serious malfunction of the unit and/or create unsafe situations, you must observe the following:

- Ensure that each piece of non- CASE IH equipment fitted to the machine bears the CE mark.
- The maximum power of emission equipment (radio, telephones, etc.) must not exceed the limits imposed by the national authorities of the country where you use the machine.
- The electro-magnetic field generated by the add-on system should not exceed **24 V/m** at any time and at any location in the proximity of electronic components.

Failure to comply with these rules will render the CASE IH warranty null and void.

Manual scope and required training level

This manual provides information on the intended use of your tractor under the conditions foreseen by the manufacturer during normal operation, routine service and maintenance and periodic service and maintenance.

Normal operation is use of the tractor for the purpose intended by the manufacturer by an owner/operator who is familiar with the tractor and the mounted or towed equipment, and who is complying with the information on operation and safe practices, provided in this manual and by the decals on the tractor and the equipment.

Normal operation includes such actions as preparing the tractor for storage and removing the tractor from storage, adding or removing ballast, connecting and disconnect-

ing mounted or towed equipment, raising and lowering components into or out of work position, adjusting tractor settings for specific field or crop settings, etc.

Routine service and maintenance are those actions which must be performed daily to maintain proper tractor function by an owner/operator who is familiar with tractor characteristics, and who is complying with the information on routine service and safe practices in this manual and in the decals on the tractor.

Routine service and maintenance includes such actions as fueling, cleaning, washing, topping off fluid levels, greasing, and replacing consumable articles such as lamp bulbs.

Periodic service and maintenance are those actions which must be performed at regularly defined intervals to maintain proper tractor function by an owner/operator who is familiar with tractor characteristics, and who is complying with the information on periodic service and safe practices in this manual and in the decals on the tractor.

Periodic service and maintenance includes such actions as checking, cleaning and changing air filters, changing engine oil and filters, changing transmission oil and filters, changing front axle and wheel hub fluids, changing coolant, etc.

Note to the Owner

This manual contains important information about the safe operation, adjustment and routine maintenance of your Magnum series tractor. The manual is divided into eleven chapters as outlined in the table of contents. Refer to the index at the end of this manual for locating specific items about your tractor.

Do NOT operate or permit anyone to operate or service this machine until you or the other persons have read this manual. Use only trained operators who have demonstrated the ability to operate and service this machine correctly and safely.

This Operator's Manual is to be stored in the manual compartment behind the operator's seat in the vehicle. Make

Some actions in the periodic service and maintenance chart are beyond the knowledge and skills of the owner/operator: for example, engine valve adjustment, fuel injector nozzles. For these actions, the manual instructs the owner/operator to have the action performed by their authorized dealer.

This manual does not contain all the information related to periodical service and maintenance, converting and repairs to be carried out by professional service personnel. These actions require special facilities, technical skills, and/or tools which are not supplied with the machine.

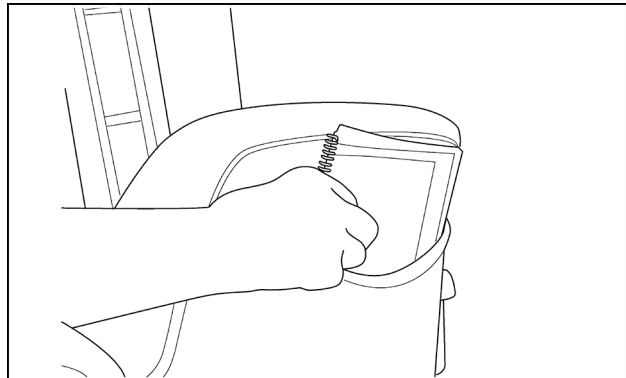
sure this manual is in good condition. Contact your dealer to obtain additional manuals.

Your CASE IH dealer will instruct you in the general operation of your new equipment. Your dealer's staff of factory-trained service technicians will be glad to answer any questions that may arise regarding the operation of your machine. They will also provide any after-sales service you may need, and genuine CASE IH parts, your guarantee of quality and match.

Conexão Case is also available. Call +55 0800 500 5000 or email conexao@caseih.com.

Manual storage

Keep the Operator's Manual in the storage compartment provided on your tractor. The Operator's Manual must be available for use by all operators.



CUIS15TR00183AA 1

Product identification

Tractor model and product identification number

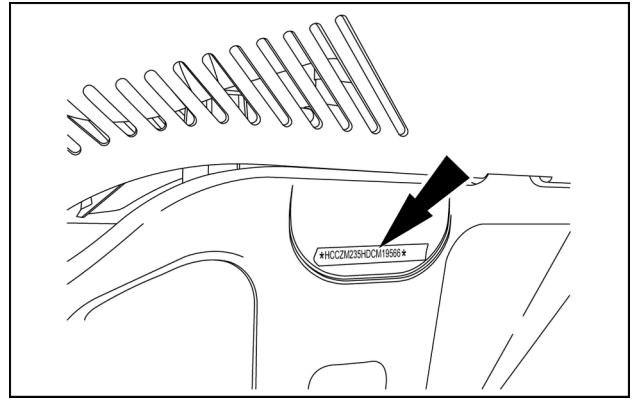
Write your model number, product identification number (PIN) or serial number of major components on the lines provided. If needed, give these numbers to your CASE IH dealer when you need parts or information for your machine.

1 - GENERAL INFORMATION

Located on right hand front casting.

Model:

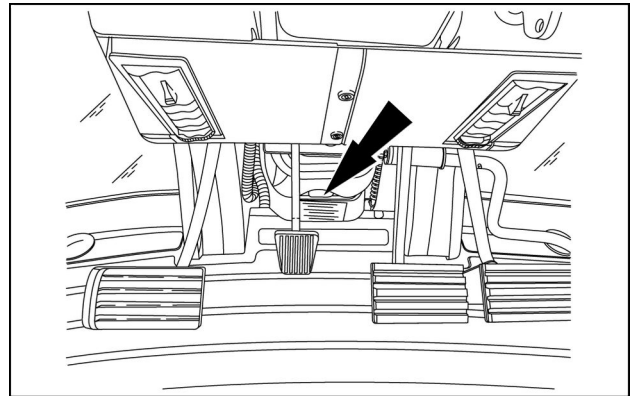
PIN:



CUIL13TR01327AA 1

Rollover protective structure (ROPS) identification number

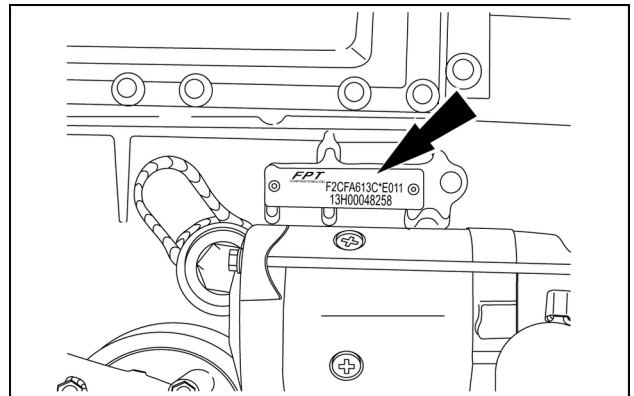
Located below the steering column.



CUIL13TR01331AA 2

Engine identification number

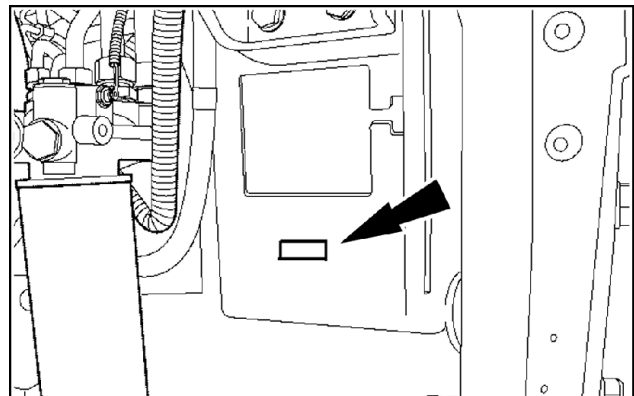
It is also etched into the left-hand side of the engine block, just below the oil cooler.



CUIL13TR01332AA 3

Transmission serial number

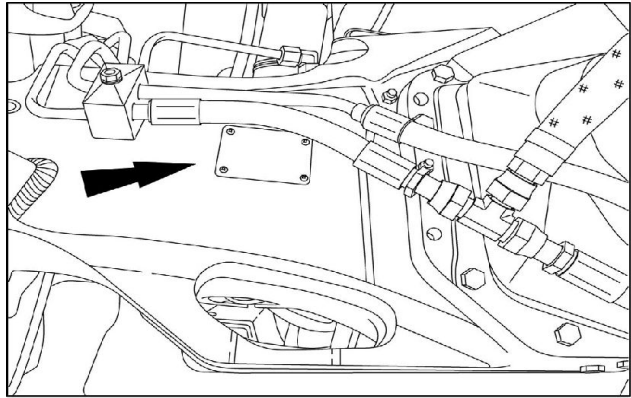
Located on the right hand side of the transmission (speed housing) behind the fuel tank and to the right of the main hydraulic filter.



CUIL13TR01314AA 4

Front axle identification number

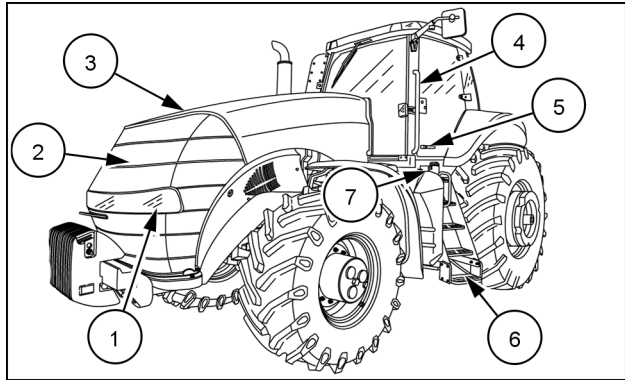
The identification plate is located on the rear face of the front axle housing



CUIS13TR01316AA 5

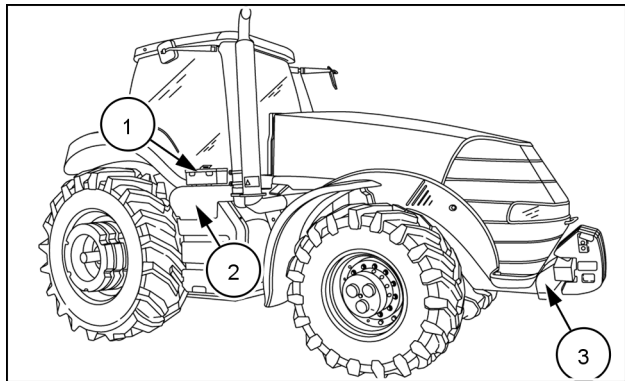
Component location

1. Work lights
2. Hood
3. Battery compartment (right-hand side)
4. Handrail
5. Cab door and latch
6. Steps
7. Fuel fill and tank



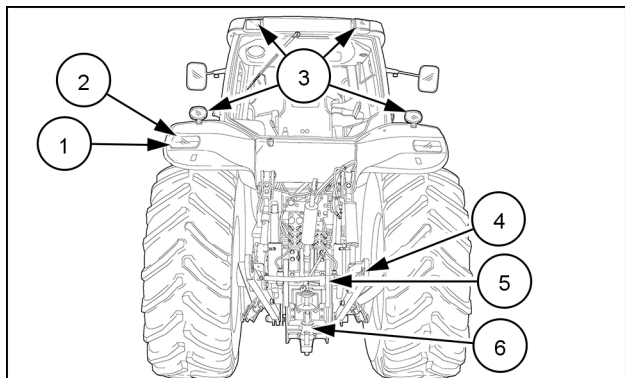
CUIS15TR00185AA 1

1. Tool Box
2. Air filter compartment
3. Front weight bracket



CUIS15TR00184AA 2

1. Brake/tail lamps (both sides)
2. Amber warning lamps
3. Work lamps
4. Rear hitch mount
5. Rear PTO and shield
6. Drawbar



CUIS15TR00186AA 3

Machine position

The right hand and left hand side of the tractor used in this manual are the same as your right hand and left hand when sitting in the tractor seat looking forward.

Buy Now



Our support email:

ebooklibonline@outlook.com