

ORIGINAL INSTRUCTIONS

**L350A**  
Farm Loader

**OPERATOR'S MANUAL**

**Part number 48077340**

2<sup>nd</sup> edition English

November 2016

*Replaces part number 47611331*



# Contents

---

## 1 GENERAL INFORMATION

Note to the Owner .....	1-1
International symbols .....	1-3
Front loader and bucket - Product identification .....	1-4
Machine orientation .....	1-5
Product overview .....	1-6

## 2 SAFETY INFORMATION

Safety rules and signal word definitions .....	2-1
Safety rules .....	2-2
Ecology and the environment .....	2-7
Decals and plates - Safety signs .....	2-8

## 3 OPERATING INSTRUCTIONS

### Commissioning the unit

Machine preparation .....	3-1
Installing the loader .....	3-2
Installing the quick-attach plate .....	3-8
Installing the quick-attach bucket .....	3-10
Installing the bucket level indicator .....	3-12
Connecting the hydraulics at the tractor .....	3-14

### Parking the unit

Removing the quick-attach bucket .....	3-15
Removing the quick-attach plate .....	3-16
Removing the loader .....	3-17

## 4 WORKING OPERATIONS

### General information

Operating the loader .....	4-1
Front remote control valve .....	4-10

## 5 MAINTENANCE

### General information

Basic instructions .....	5-1
Daily inspection .....	5-2
Hydraulics .....	5-4
Consumables .....	5-5

### Maintenance planning

Maintenance chart .....	5-6
-------------------------	-----

---

## Daily maintenance

Front loader and bucket - Check .....	5-6
Front loader and bucket - Grease .....	5-7

## First 10 hours

Front loader and bucket - Check .....	5-8
---------------------------------------	-----

## Every 50 hours

Front loader and bucket - Check .....	5-8
---------------------------------------	-----

## 6 TROUBLESHOOTING

### Symptom(s)

Front loader and bucket - Troubleshooting .....	6-1
---	-----

## 7 SPECIFICATIONS

Loader specifications .....	7-1
Rear weighting options .....	7-3
Tractor ballasting .....	7-5
Tire pressure .....	7-7

## 8 ACCESSORIES

Attachments .....	8-1
-------------------	-----

## 9 FORMS AND DECLARATIONS

Delivery report - Owner copy .....	9-1
Delivery report - Dealer copy .....	9-2

---

# 1 - GENERAL INFORMATION

## Note to the Owner

This manual contains information concerning the adjustment and maintenance of your new equipment. You have purchased a dependable machine, but only by proper care and operation can you expect to receive the performance and long service built into this equipment. Please have all operators read this manual carefully and keep it available for ready reference.

Your CASE IH dealer will instruct you in the general operation of your new equipment. (Refer to the 'Delivery Report' at the back of this manual.) Your dealer's staff of factory-trained service technicians will be glad to answer any questions that may arise regarding the operation of your machine. Case IH Max Service is also available. Call 1-877-4CASEIH (1-877-422-7344) or email [maxservice.na@cnh.com](mailto:maxservice.na@cnh.com).

Your CASE IH dealer carries a complete line of genuine CASE IH service parts. These parts are manufactured and carefully inspected to insure high quality and accurate fitting of any necessary replacement parts. Be prepared to give your dealer the model and product identification number of your new equipment when ordering parts. Locate these numbers now and record them below. Refer to the 'General Information' section of this manual for the location of the model and product identification numbers of your machine.

### PLEASE RECORD THE FOLLOWING INFORMATION

**Loader Model**

---

**Product Identification Number (PIN)**

---

**Date Purchased**


---

**Attachment Model**

---

**Attachment Model**

---

	<p>This is the safety alert symbol. It is used with and without signal words to alert you to potential personal injury hazards. Obey all safety messages that follow this symbol to avoid possible death or injury.</p>
---	---

### **WARNING**

**Illustrations in this manual may show protective shielding open or removed to better illustrate a particular feature or adjustment.**

**Replace all shields before operating the machine.**

**Failure to comply could result in death or serious injury.**

W0012A

## Improvements

CNH America LLC is continually striving to improve its products. We reserve the right to make improvements or changes when it becomes practical and possible to do so, without incurring any obligation to make changes or additions to the equipment sold previously.

## Intended use

The loader was designed to mount on CASE IH approved tractors. The loader is designed to load and move materials with a variety of buckets and approved CASE IH attachments.

DO NOT use this machine for any purpose or in any manner other than as described in the manual, decals, or other product safety information provided with the machine. These materials define the machine's intended use.

Use only approved accessories and attachments designed for your machine. Consult your dealer on changes, additions or modifications that may be required for your machine. Do not make any unauthorized modifications to your machine.

Installation and operation instructions for certain hydraulic valve sets, attachments and accessories may not be included in this operator's manual.

Use the publication received with the specific item. In the case of hydraulic valves, refer to the tractor operator's manual.

**NOTICE:** *Loader frames are designed for specific tractor models. Do not install a loader frame on a different model than specified, without obtaining approval from CNH America LLC.*

## Operator's age

All persons who will be operating this machine shall possess a valid local vehicle operating permit and/or other applicable local age work permits.

## WARNING

**IMPROPER OPERATION OF THIS MACHINE CAN CAUSE DEATH OR SERIOUS INJURY. MAKE SURE THAT EVERY OPERATOR:**

**-is instructed in the safe and proper use of this machine.**

**-reads and understands the operator's manual for this machine.**

**-reads and understands ALL safety signs on the machine.**

**Failure to comply could result in death or serious injury.**

W0188A

Read and thoroughly understand this manual before operating this machine. If you are an inexperienced operator, study this manual and receive operating instructions from an experienced operator. Your dealer can assist you in learning machine operation and show you proper operating procedures. Keep this manual readily available, preferably with the machine. If the original manual is damaged, order a new one from your dealer.

## International symbols

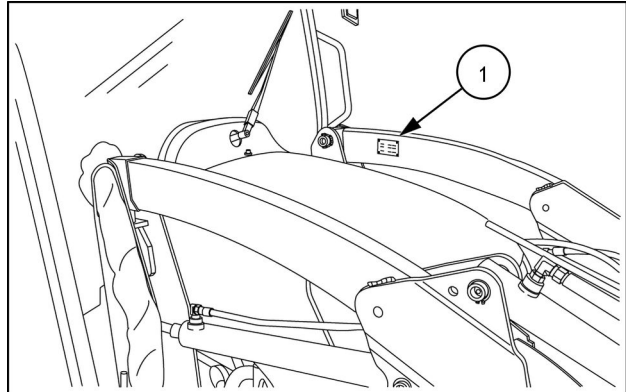
As a guide to the operation of the machine, various universal symbols have been utilized on the instruments, controls, switches, and fuse box. The symbols are shown below with an indication of their meaning.

	Thermostart starting aid		Radio		PTO		Position Control
	Alternator charge		Keep alive memory		Transmission in neutral		Draft Control
	Fuel level		Turn signals		Creeper gears		Accessory socket
	Automatic Fuel shut-off		Turn signals -one trailer		Slow or low setting		Implement socket
	Engine speed (rev/min x 100)		Turn signals -two trailers		Fast or high setting		%age slip
	Hours recorded		Front windshield wash/wipe		Ground speed		Hitch raise (rear)
	Engine oil pressure		Rear windshield wash/wipe		Differential lock		Hitch lower (rear)
	Engine coolant temperature		Heater temperature control		Rear axle oil temperature		Hitch height limit (rear)
	Coolant level		Heater fan		Transmission oil pressure		Hitch height limit (front)
	Tractor lights		Air conditioner		FWD engaged		Hitch disabled
	Headlamp main beam		Air filter blocked		FWD dis-engaged		Hydraulic and transmission filters
	Headlamp dipped beam		Parking brake		Warning!		Remote valve extend
	Work lamps		Brake fluid level		Hazard warning lights		Remote valve retract
	Stop lamps		Trailer brake		Variable control		Remote valve float
	Horn		Roof beacon		Pressurized! Open carefully		Malfunction! See Operator's Manual
			Warning ! Corrosive substance				Malfunction! (alternative symbol)

## Front loader and bucket - Product identification

### PRODUCT IDENTIFICATION PLATE

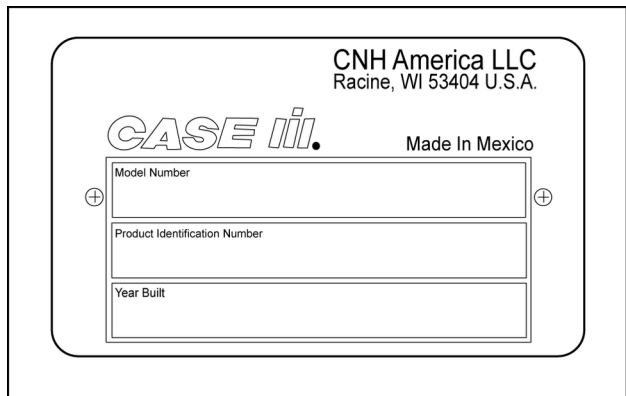
A product identification plate (1) is located on the inside of the left-hand loader frame.



NHIL13CT00513AA 1

Thin mount style (Left side loader arm)

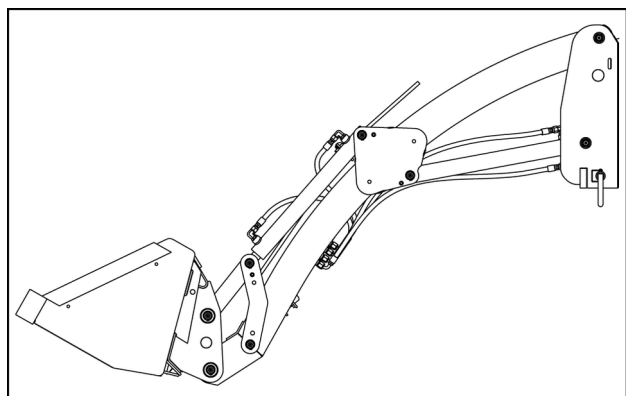
The identification numbers on this plate are important in the event that your loader should require future service.



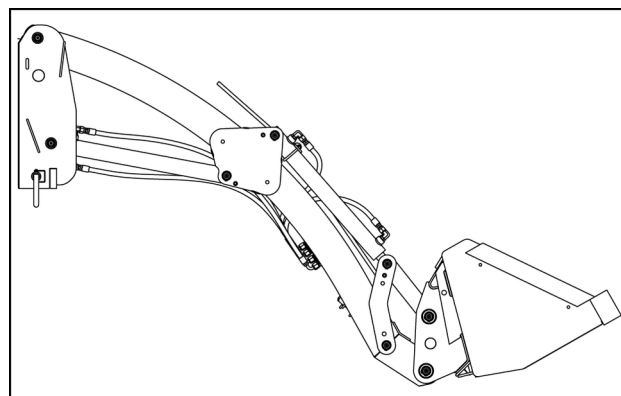
NHIL13CT00935AA 2

## Machine orientation

**NOTE:** On this equipment, left-hand and right-hand are determined by standing behind the unit, looking in the direction of travel.

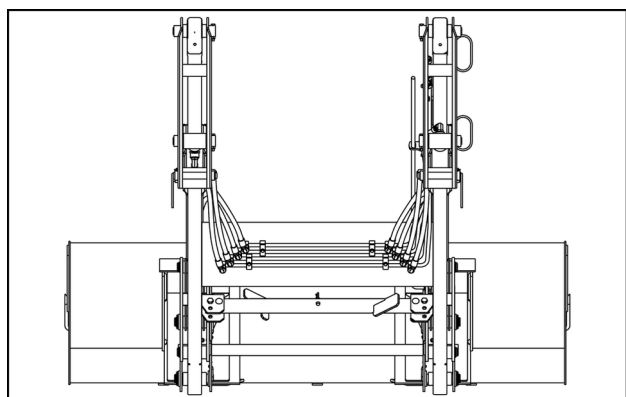


NHIL14CT00039AA 1



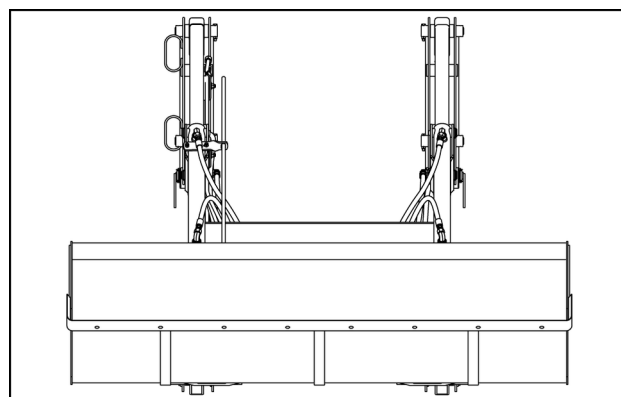
NHIL14CT00037AA 2

## Left-hand view



NHIL14CT00040AA 3

## Right-hand view



NHIL14CT00038AA 4

## Rear view

## Front view





Our support email:

[ebooklibonline@outlook.com](mailto:ebooklibonline@outlook.com)