

**Farmall 60**  
**Farmall 80**  
**Farmall 95**  
Tractor

**OPERATOR'S MANUAL**

**Part number 48090284**

1<sup>st</sup> edition English

December 2016

*Replaces part number 47957752*



# Contents

---

## 1 GENERAL INFORMATION

Note to the owner.....	1-1
Identification from the engine .....	1-3
Nameplate .....	1-3
Ecology and the environment .....	1-5
Noise levels.....	1-6
Operating tips.....	1-7
Universal symbols .....	1-9

## 2 SAFETY INFORMATION

Safety precautions.....	2-1
Shielding offered by the machine .....	2-2
Roll Over Protection Structure (ROPS) .....	2-4
Roll over protective struture (ROPS) – Folding (when equipped) .....	2-5
Safety Decals - Cab models .....	2-6
Safety decals – Models without cab .....	2-14
Before operating the machine .....	2-20
Driving the vehicle .....	2-21
Machine operation.....	2-22
Power take off (PTO) operation .....	2-23
Maintenance.....	2-23
Diesel fuel .....	2-26
Fire or Explosion Prevention .....	2-26
Air conditioner .....	2-27
Intended use statement .....	2-28

## 3 CONTROLS AND INSTRUMENTS

### ACCESS TO OPERATOR'S PLATFORM

General check .....	3-1
Introduction .....	3-2
Rearview mirrors .....	3-4
Rearview mirrors .....	3-4
Cab - Overview .....	3-5
Platform header .....	3-6

### OPERATOR'S SEAT

Operator's seat .....	3-7
Seat belt .....	3-9

### FORWARD CONTROLS

Controls front .....	3-10
Ignition switch .....	3-11
Four-wheel drive with electro-hydraulic control.....	3-12
Cold starting aids (when fitted) .....	3-13
Warning lights .....	3-14

---

Clutch pedal .....	3-15
Inching pedal and throttle.....	3-15
Foot pedals of brake .....	3-15
Adjustments the steering column .....	3-16
Throttle by hand .....	3-17

## LEFT-HAND SIDE CONTROLS

Left-hand side controls .....	3-18
-------------------------------	------

## RIGHT-HAND SIDE CONTROLS

Controls valve .....	3-19
Hydraulic controls .....	3-19
Differential lock system – Mechanical .....	3-20
Right hand side controls.....	3-20

## REARWARD CONTROLS

Switch - Rear work light .....	3-22
--------------------------------	------

## OVERHEAD CONTROLS

Radio (when fitted) .....	3-22
Interior lights.....	3-23
Climate controls .....	3-24

## EXTERIOR CONTROLS

Power Take-Off (PTO) - Speed selection lever .....	3-26
--	------

## INSTRUMENT CLUSTER

Instrument panel.....	3-27
Gauges .....	3-28

# 4 OPERATING INSTRUCTIONS

## COMMISSIONING THE UNIT

General instructions .....	4-1
Filling the fuel tank .....	4-2

## STARTING THE UNIT

Starting the engine .....	4-3
Cold starting aids (when fitted) .....	4-4
Booster battery procedure.....	4-6

## STOPPING THE UNIT

Stopping the engine .....	4-7
---------------------------	-----

## 5 TRANSPORT OPERATIONS

### PREPARING FOR ROAD TRANSPORT

Machine loading in a transporter .....	5-1
--	-----

### RECOVERY TRANSPORT

Towing the machine .....	5-1
--------------------------	-----

## 6 WORKING OPERATIONS

### GENERAL INFORMATION

Traction Front Wheel Drive (FWD) .....	6-1
Differential lock system – Mechanical .....	6-2

### TRANSMISSION

Operation - 12x4 Mechanical transmission .....	6-3
Travel speeds - 12x4 Mechanical transmission .....	6-4
Operation - 12x12 Mechanical transmission .....	6-5
Travel speeds - 12x12 Mechanical transmission .....	6-6
Operation - 20x12 Mechanical transmission .....	6-7
Travel speeds - 20x12 Mechanical transmission .....	6-8
Informational decals - Transmission .....	6-9
Inching pedal and throttle.....	6-12
Throttle by hand .....	6-12

### REAR POWER TAKE-OFF

Operating precautions .....	6-13
Power Take-Off (PTO) operation with mechanical engagement .....	6-14
Operating speeds of the Power Take-Off (PTO) .....	6-16

### HYDRAULIC REMOTE CONTROL VALVES

Operation - Remote control valves .....	6-18
Installing attachments .....	6-20

### THREE POINT HITCH

Attach the implement on the hydraulic lift .....	6-21
Adjustments - Three-point hydraulic lift .....	6-22
Hydraulics .....	6-25
Operation of the hydraulic system .....	6-26
Maximum Work Height of the hydraulic lift .....	6-29
Quick guide - Use of hydraulic system levers .....	6-30

### DRAWBARS AND TOWING ATTACHMENTS

Attaching a trailer.....	6-31
Tractor drawbar.....	6-31

---

## WHEEL TRACK ADJUSTMENT

Front wheel tread settings .....	6-33
Steering stops .....	6-37
Front wheel alignment .....	6-38
Rear wheel tread settings .....	6-39

## BALLASTING AND TIRES

Tires – Wheels .....	6-43
Tires - Inflation .....	6-46
Tires - Acceptable pressures and loads .....	6-47
Tires - Compatibility table .....	6-50
Tires and ballasting .....	6-54
Ballasting - Limits .....	6-56
Ballasting solid .....	6-57
Liquid ballast .....	6-58

## 7 MAINTENANCE

### GENERAL INFORMATION

Introduction .....	7-1
Fuel handling precautions .....	7-3
Diesel fuel .....	7-5
Specifications - Biodiesel fuel .....	7-6
Organic Acid Technology (OAT) coolant .....	7-8
Fluids and lubricants .....	7-9
General instructions from the machine .....	7-10
Protective devices .....	7-11

### MAINTENANCE CHART

Maintenance chart .....	7-13
-------------------------	------

### WHEN THE WARNING LAMP LIGHTS

Engine air filter, primary – Cleaning .....	7-15
Brake fluid – Check .....	7-17

### EVERY 10 HOURS OR EACH DAY

Fuel system water separator - Drain .....	7-18
Engine coolant level .....	7-18
Checking the engine oil level .....	7-19
Battery – Cleaning .....	7-20
Cleaning the radiators .....	7-20

### FIRST 50 HOURS

First 50 Hour Service .....	7-21
-----------------------------	------

### EVERY 50 HOURS

Air-conditioning system .....	7-22
Transmission housing - Check .....	7-22

---

Cab air filter .....	7-23
Lubrication points – Version with Auxiliary Front Wheel Drive (AFWD) .....	7-24

## EVERY 300 HOURS

Change engine oil and filter .....	7-27
Replacement of fuel filter .....	7-28
Fuel transfer pump - Cleaning .....	7-28
Replace fuel prefilter .....	7-29
Engine crankcase breather filter - Cleaning .....	7-29
Hydraulic oil filter - Replace .....	7-29
Hydraulic oil level .....	7-30
Front axle differential – Checking the oil level .....	7-30
Park brake - Adjust .....	7-31
Activated charcoal filter .....	7-31
Engine fan belt - Adjustment .....	7-32
Air conditioning filter drier – Check .....	7-32

## EVERY 600 HOURS

Cab air filters - Replace .....	7-33
Fuel injection system - Cleaning .....	7-34
Front axle hub oil - Change fluid .....	7-35
Wheel nuts tightening torque .....	7-35

## EVERY 1200 HOURS OR ANNUALLY

Engine valve clearance – Check .....	7-36
Engine air filters - Replace .....	7-36
Fuel tank - Cleaning .....	7-37
Front axle drive shaft - Check .....	7-37
Front Axle Oil - Replace .....	7-38
Transmission oil - Replace .....	7-39

## EVERY 1200 HOURS OR EVERY 2 YEARS

Fuel injectors – Check .....	7-40
------------------------------	------

## EVERY 4000 HOURS OR 4 YEARS

Engine coolant replacement .....	7-41
----------------------------------	------

## GENERAL MAINTENANCE

Fuel system - Bleed .....	7-44
PTO clutch adjustment – Models without cab .....	7-45
PTO clutch adjustment - Cab models .....	7-46
Clutch pedal free play – Models without cab .....	7-47
Clutch pedal free play - Cab models .....	7-47
Fuel tank screen filter - Cleaning .....	7-48
A/C compressor belt - Adjustment .....	7-48
Windshield washer reservoir – Check .....	7-49

---

Brakes - Air bleeding .....	7-49
Battery – Check .....	7-50
Fuses and Relays - Cab models .....	7-51
Fuses and Relays – Models without cab .....	7-53
Work lights and lights - Adjustment .....	7-55
Lamps - Replace .....	7-56
Cab – Check .....	7-58
Protecting the electronic and electrical systems during battery charging or welding..	7-59
Transmission housing - Check .....	7-60

## STORAGE

Storing the machine .....	7-61
Preparation for use after storage .....	7-62

## 8 TROUBLESHOOTING

### SYMPTOM(S)

Engine .....	8-1
Hydraulic System .....	8-2
Three-point hitch .....	8-2
Brakes .....	8-4
Cab .....	8-4
Electrical System .....	8-5

## 9 SPECIFICATIONS

Fluids and lubricants .....	9-1
Engine .....	9-3
Transmission .....	9-3
Brakes .....	9-4
Power Take-Off (PTO) .....	9-4
Hydraulic System .....	9-4
Electrical system .....	9-5

# 1 - GENERAL INFORMATION

## Note to the owner

### General Information

This manual has been prepared to assist you in the correct procedure for running in, driving and operating your new machine, and for its maintenance. Read this manual carefully. Your machine is designed to be used in normal and customary agricultural applications.

If you require advice concerning your machine at any time, do not hesitate to contact your CASE IH dealer. He has factory trained personnel, genuine manufacturers' parts and the necessary equipment to carry out all your service requirements.

The specification are provided for your information and guidance. For further information concerning your machine and equipment, consult your CASE IH dealer.

All data given in this book is subject to production variations. Dimensions and weight are approximate only. The illustrations do not necessarily show machines in standard condition or imply that these features are available in all countries. For exact information about a particular machine, see your CASE IH dealer.

Your machine has been designed and built to give maximum performance, economy and ease of operation under a wide variety of operating conditions. Prior to delivery, the machine was carefully inspected, both at the factory and by your dealer, to ensure that it reaches you in optimum condition. To keep the machine in this condition and ensure trouble-free operation, it is important that you perform routine checks at the recommended intervals, as specified in the maintenance table on the page **7-13**.

### Operator's manual storage

The operator's manual supplied with your machine is an important source of information and should be stored safely.

The manual has been written specifically for your tractor so it is important that you make a note of the print number and issue date, which can be found on the cover. In the event the manual is lost or damaged it can be replaced with the correct version.

### About this manual

This manual gives information for use of your machine, as intended and under the conditions foreseen by the manufacturer during normal operation and routine service and maintenance.

Read and understand it; keep it in good condition and always keep it in a safe place.

This manual does not contain all the information related to periodical service, converting and repairs to be carried out by CASE IH professional service personnel.

The Table of Contents page(s) are provided to have an overview of main manual's topics. A detailed alphabetic index is available at the end of this manual for locating specific items.

### Normal operation

- Normal operation means the use of the machine for the purpose intended by the manufacturer by an operator familiar with the machine and the mounted or towed equipment and complying with the information for operation and safe practices, as specified by the manufacturer in this manual and by the decals on the machine and the equipment.
- Normal operation includes preparing and storing the machine, swinging components into and out of work position, adding and removing ballast, and connecting and removing accessories.
- Normal operation includes adjusting and setting up the machine and equipment, for the specific conditions of the field and/or the crop.

### Routine service

- Routine servicing and maintenance means activities that must be performed daily by an operator familiar with the machine's characteristics and in compliance with the routine servicing information and with safe practice, as specified by the manufacturer in this manual and by decals on the machine, in order to keep it working properly. The routine service includes activities such as filling up, cleaning, washing, topping up fluid, applying grease, and replacing consumable items such as bulbs.

### Converting, periodical service and repair

- Periodic servicing means activities that must be performed at given intervals by trained personnel familiar with the machine's characteristics and in compliance with the periodic servicing information and with safe practice, as specified by the manufacturer in this manual and in other company literature, in order for the machine to keep to its expected working lifespan.
- Conversion means activities that must be performed by professional service personnel familiar with the machine's characteristics and in compliance with the conversion information, as specified by the manufacturer in this manual, as well as with other company instructions or literature, in order to prepare the machine for a specific configuration.



- Repair means activities that must be performed by professional service personnel familiar with the machine's characteristics and in compliance with the repair information, as specified by the manufacturer in the dealer's manual, in order to restore the machine to correct working order following a fault or reduced performance.

## Cleaning the machine

When using a high pressure washer, do not stand too close to the machine and avoid directing the jet at electronic components, electrical connections, breathers, seals, filler necks, etc. Never direct a cold water jet at a hot engine or exhaust.

Failure to comply with these rules will render the warranty null and void.

## Security

The pages in Section 2 list the precautions to be observed to ensure your safety and the safety of others. Read the safety precautions and follow the advice offered before operating the machine.

## Servicing after the first 50 hours

On page 7-21 you will find the operations that need to be performed after the first 50 hours of service.

This service should be performed by your CASE IH dealer.

**NOTICE:** It is important that the 50 h service is carried out in line with the recommendation to guarantee that the machine is providing optimal performance and efficiency.

## Replacement Parts

It should be pointed out that genuine parts have been examined and approved by the Company. Fitting and/or

using non-genuine products could have negative effects on the design characteristics of your machine, thereby affecting its safety. The Company is not liable for any damage caused by the use of 'non-genuine' parts and accessories. Only genuine replacement parts should be used. The use of non-genuine parts may invalidate legal approvals associated with this product.

Making any modifications to the machine is prohibited, without specific written authorization from the manufacturer's After Sales Service department.

## Warranty

Your machine is warranted according to legal rights in your country and the contractual agreement with the selling dealer. No warranty shall, however, apply if the machine has not been used, adjusted and maintained as per the instructions given in the operator's manual.

## Using Biodiesel

Before using biodiesel in your machine, refer to the information on page 7-5 as regards storing and using biodiesel.

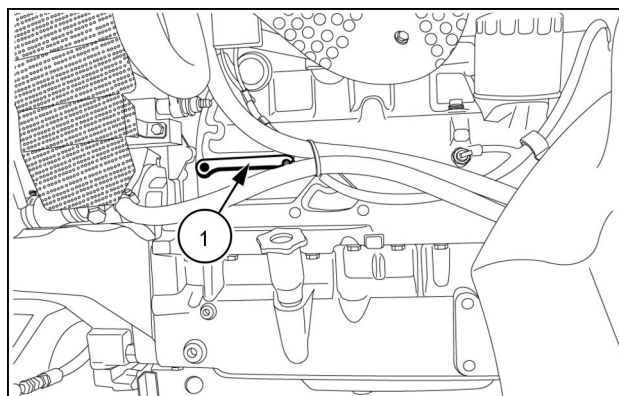
## Tampering with the engine or fuel system

**ATTENTION:** Your machine's engine and the fuel system were designed and configured to meet the emissions standards required by the laws in your country or region. Dealers, customers, operators, and users are strictly prohibited from tampering with the machine's factory settings. Failure to comply with this rule invalidates the machine's warranty and could result in government fines, legal action, and possible confiscation of the machine until rework to original condition is completed. Engine maintenance and repairs must be done by an authorized technician only.

## Identification from the engine

The engine identification is engraved on a plate **(1)** on the left-hand side of the engine block. Note down the number here:

Engine Serial No.: \_\_\_\_\_

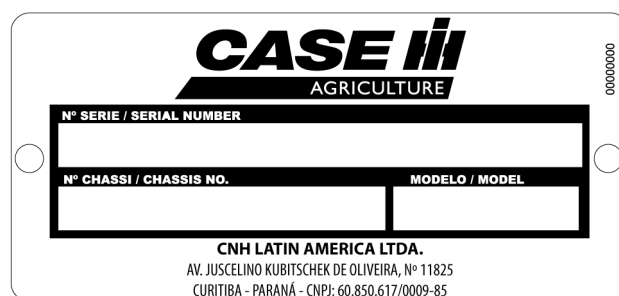


CUIL13TR01085AA 1

## Nameplate

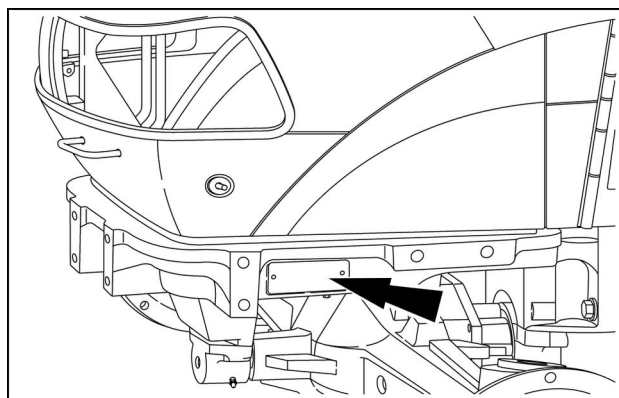
The Product Identification Number (PIN) can be found on the plate located on the front left-hand axle support.

Product Identification Number (PIN): \_\_\_\_\_



BRAG12TRLUE0347 1

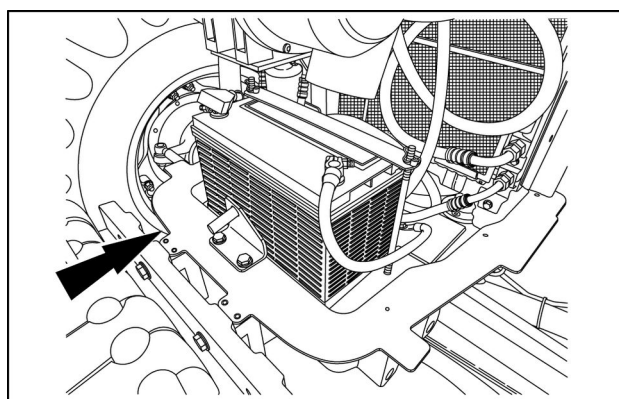
Product identification plate **(1)**.



CUIL13TR01265AA 2

The Product Identification Number (PIN) is engraved on the support cradle of the front axle, in front of the battery. Note down that identification here.

PIN: \_\_\_\_\_



CUIL13TRO0194AA 3

## 1 - GENERAL INFORMATION

A plate is affixed in the rear of the cab/platform. The plate provides information about the Rollover Protective Structure (ROPS) and the maximum permissible weight of the machine.

Cab models.

ESTRURA DE PROTEÇÃO CONTRA CAPOTAMENTO ROLL-OVER PROTECTIVE ESTUVTURE MARCO DE SEGURIDAD			
MODELOS ATENDIDOS: COVERED MODELS: MODELOS ATENDIDOS:	FARMALL (80, 95)	MASSA MÁX: MAX. MASS: PESO MÁX:	4200Kg
		P/N:	47546512
CNH LATIN AMERICA LTDA. AV. JUCELINO K. DE OLIVEIRA, 11825 CURITIBA / PARANÁ CNPJ: 60.850.617/0009-85 INDUSTRIA BRASILEIRA / MADE IN BRAZIL		NOMRA: STANDARD: NORMA:	OECD CODE 4 NBR ISO 5700

47546512 4

Platform models.

ESTRURA DE PROTEÇÃO CONTRA CAPOTAMENTO ROLL-OVER PROTECTIVE ESTUVTURE MARCO DE SEGURIDAD			
MODELOS ATENDIDOS: COVERED MODELS: MODELOS ATENDIDOS:	FARMALL (60, 80, 95)	MASSA MÁX: MAX. MASS: PESO MÁX:	4000Kg
		P/N:	47546511
CNH LATIN AMERICA LTDA. AV. JUCELINO K. DE OLIVEIRA, 11825 CURITIBA / PARANÁ CNPJ: 60.850.617/0009-85 INDUSTRIA BRASILEIRA / MADE IN BRAZIL		NOMRA: STANDARD: NORMA:	OECD CODE 4 NBR ISO 5700

47546511 5

## Ecology and the environment

Soil, air, and water quality is important for all industries and life in general. When legislation does not yet rule the treatment of some of the substances that advanced technology requires, sound judgment should govern the use and disposal of products of a chemical and petrochemical nature.

Familiarize yourself with the relative legislation applicable to your country, and make sure that you understand this legislation. Where no legislation exists, obtain information from suppliers of oils, filters, batteries, fuels, anti-freeze, cleaning agents, etc., with regard to the effect of these substances on man and nature and how to safely store, use, and dispose of these substances. Your CASE IH dealer can also provide assistance.

### Helpful hints

- Avoid the use of cans or other inappropriate pressurized fuel delivery systems to fill tanks. Such delivery systems may cause considerable spillage.
- In general, avoid skin contact with all fuels, oils, acids, solvents, etc. Most of these products contain substances that may be harmful to your health.
- Modern oils contain additives. Do not burn contaminated fuels and or waste oils in ordinary heating systems.
- Avoid spillage when you drain fluids such as used engine coolant mixtures, engine oil, hydraulic fluid, brake fluid, etc. Do not mix drained brake fluids or fuels with lubricants. Store all drained fluids safely until you can dispose of the fluids in a proper way that complies with all local legislation and available resources.
- Do not allow coolant mixtures to get into the soil. Collect and dispose of coolant mixtures properly.
- Do not open the air-conditioning system yourself. It contains gases that should not be released into the atmosphere. Your CASE IH dealer or air-conditioning specialist has a special extractor for this purpose and can recharge the system properly.
- Repair any leaks or defects in the engine cooling system or hydraulic system immediately.
- Do not increase the pressure in a pressurized circuit as this may lead to a component failure.

### Battery recycling

Batteries and electric accumulators contain several substances that can have a harmful effect on the environment if the batteries are not properly recycled after use. Improper disposal of batteries can contaminate the soil, groundwater, and waterways. CASE IH strongly recommends that you return all used batteries to a CASE IH dealer, who will dispose of the used batteries or recycle the used batteries properly. In some countries, this is a legal requirement.



NHIL14GEN0038AA 1

### Mandatory battery recycling

**NOTE:** The following requirements are mandatory in Brazil.

Batteries are made of lead plates and a sulfuric acid solution. Because batteries contain heavy metals such as lead, CONAMA Resolution 401/2008 requires you to return all used batteries to the battery dealer when you replace any batteries. Do not dispose of batteries in your household garbage.

Points of sale are obliged to:

- Accept the return of your used batteries
- Store the returned batteries in a suitable location
- Send the returned batteries to the battery manufacturer for recycling

## Noise levels

### ⚠ CAUTION

**Avoid possible hearing loss!**  
**The machine operator must wear hearing protection.**  
**Failure to comply could result in minor or moderate injury.**

C0070A

### ⚠ WARNING

**Personal Protective Equipment (PPE) required.**  
**When assembling, operating, or servicing the machine, wear protective clothing and PPE necessary for the particular procedure. Some PPE that may be necessary includes protective shoes, eye and/or face protection, hard hat, heavy gloves, filter mask, and hearing protection.**  
**Failure to comply could result in death or serious injury.**

W0353A

Noise is considered the most common of the pollutants that cause physical problems. Brazilian legislation establishes maximum limits for intensity and continuous or intermittent noise exposure durations. The tolerance limits for continuous and intermittent noise are detailed in Annex 1 to the regulatory Standard (NR15) of 1990. See the legislation in force in your country.

Noise emission tests were performed while your machine was being developed. The tests were carried out as per Directive 77/311/EEC and the machine is tested at a speed of 7.5 km/h. Table 01 sets out the average noise values at operator ear height.

Table 01: Noise levels in dB (decibel) at operator ear level, measured as per Directive 77/311/EEC and tested at a speed of 7.5 km/h for models with cab.

Model	Configuration 1		Configuration 2	Setup 3	Setup 4	Setup 5	Setup 6
	Mini-mum throttle	Nominal speed	Nominal speed	Nominal speed			
	LE	LE	LE	LE			
Farmall 60	75,0	86,5	87,5	92,0	-	-	-
Farmall 80	-	-	-	-	86,0	82,0	80,0
Farmall 95	-	-	-	-	84,0	84,0	80,0

Settings	Test conditions						
	Tractor stopped	Tractor moving	Minimum speed	Nominal speed	Maximum engine speed	Tractor with no cab	Doors and Windows
Configuration 1	X		X	X			
Configuration 2 (*)		X		X			
Configuration 3 (**)		X			X		
Setup 4						X	
Setup 5							Open
Setup 6							Closed

(\*) In line with the reference standard, this configuration determines using the gear when the tractor speed is closest to **7.2 km/h**.

(\*\*) In line with the reference standard, this configuration determines the maximum speed achieved by the tractor.

It is important to stress that the use of ear protectors is recommended for the Operator and people who work close to the machines, regardless of the noise intensity and time of exposure.

During operation, the machines may be driving or powering other equipment, and this in turn also produces noise. As a result, the real noise levels perceived by the Operator and people who work close to the machines can vary considerably. Always consider wearing ear protectors that are good quality, intact, and that offer maximum protection.



Our support email:

[ebooklibonline@outlook.com](mailto:ebooklibonline@outlook.com)