

OPERATOR'S MANUAL

8010

9010

Tractor

Part number 48134653

2nd edition English

November 2017



Contents

1 GENERAL INFORMATION

Note to the owner	1-1
Product identification	1-2

2 SAFETY INFORMATION

Safety rules	2-1
Ecology and the environment	2-12
General and Safety Decals	2-14
Trailer hitching	2-20
Roll over protective structure (ROPS) (If equipped)	2-21

3 CONTROLS AND INSTRUMENTS

Access to operator's platform

Before operating	3-1
----------------------------	-----

Operator's seat

Operator's seat	3-2
Seat belt (If equipped)	3-3

Forward controls

Instrument cluster	3-4
Hand controls and switches	3-8
Clutch pedal	3-12
Brake pedals	3-12
Transmission shuttle shift lever	3-13
Foot throttle pedal	3-14
Steering wheel tilt adjustment (If equipped)	3-14

Left-hand side controls

Transmission range lever	3-15
Four-Wheel Drive (4WD) (If equipped)	3-16
PTO Lever	3-17
Parking brake	3-18
Creeper lever (If equipped)	3-18
Splitter lever (If equipped)	3-19

Right-hand side controls

Differential lock	3-20
Transmission main shift lever	3-20

4 OPERATING INSTRUCTIONS

Starting the unit

Starting the engine	4-1
---------------------------	-----

Stopping the unit

Stopping the engine	4-6
---------------------------	-----

5 TRANSPORT OPERATIONS

Road transport

Carrying the tractor on a transporter	5-1
---	-----

Recovery transport

Towing the tractor	5-2
--------------------------	-----

6 WORKING OPERATIONS

General information

Field operation	6-1
-----------------------	-----

Power Take-Off (PTO)

Power Take-Off (PTO) - Grouped Safety Message	6-2
---	-----

Attaching Power-Take Off (PTO) driven equipment	6-3
---	-----

Power Take-Off (PTO)	6-4
----------------------------	-----

Intercooler and turbocharger

Turbocharger	6-11
--------------------	------

Aftercooler	6-13
-------------------	------

Oil cooler	6-13
------------------	------

Three-point linkage

Three-point linkage	6-14
---------------------------	------

Attaching three-point equipment	6-14
---------------------------------------	------

Detaching three-point equipment	6-15
Lift rods, lower links and top link	6-16
Towing attachments	6-18

Hydraulic system

Hydraulic system	6-20
Remote valves (If equipped)	6-26

Wheel track adjustment

Wheel tread settings	6-27
----------------------------	------

Ballasting and tires

Ballasting and tires	6-32
----------------------------	------

7 MAINTENANCE

General information

Lubrication and maintenance general information	7-1
Refueling the tractor	7-4
Fuel saving tips for optimum performance	7-5
Guards and access panels	7-7
Lubricants and coolants	7-8
Protecting the electrical/electronic systems during charging or welding	7-9
General battery maintenance	7-10
Maintenance chart	7-12

First 50 hours

Change the engine oil	7-14
Change engine oil filter	7-15
Hydraulic oil filter	7-15

Every 10 hours of operation or daily

Engine oil level	7-16
Radiator coolant level check	7-16
Water separator	7-17

Every 50 hours

Drain water from fuel filter	7-18
------------------------------------	------

Transmission oil level Common oil level (transmission/hydraulic/steering)	7-18
Air pre-cleaner	7-19
Clutch pedal free play	7-19
Brake pedal free play	7-19
Wheel nut and bolt torque	7-21
Tire pressures and condition	7-21
Fan and alternator belt	7-22
Grease points - Two-Wheel Drive (2WD)	7-23
Grease points - Four-Wheel Drive (4WD)	7-24
Front axle - oil level	7-25

Every 150 hours

Service the engine air cleaner	7-26
Battery electrolyte level	7-29

Every 300 hours

Service the engine air cleaner	7-30
Change the fuel filter (primary)	7-30
Bleeding the fuel injection system	7-32
Fuel feed pump filter	7-33
Change the engine oil	7-33
Change engine oil filter	7-35
Transmission oil level Common oil level (transmission/hydraulic/steering)	7-35
Hydraulic oil filter	7-36
Front axle reduction hubs - 4WD	7-36
4WD front axle swivel bearings	7-37
Front axle housing oil level - 4WD	7-37
Drive shaft sleeve for 4WD front axle connection	7-38
PTO clutch lever free play	7-38
Roll Over Protective Structure (ROPS) (If equipped) - adjustments	7-39

Every 600 hours

Service the engine air cleaner	7-40
Replace the engine fuel filter	7-40
Check the valve tappet clearance	7-40
Transmission breather	7-41
Clean, re-grease and adjust the front wheel bearing	7-41
Toe-in adjustment	7-41

Every 1200 hours

Service the engine air cleaner	7-41
Fuel injectors - servicing	7-42
Change the transmission fluid	7-42
Radiator Drain and Refill the Cooling System	7-43
Front axle housing oil level - 4WD	7-44
Draining the oil from the front axle final drive hub - 4WD	7-45
Brake oil (If applicable)	7-45
Fuel tank	7-45

General maintenance

Bleeding the fuel injection system	7-46
Engine idle speed	7-46
Headlights	7-46
Position lights	7-47
Canopy lights (If equipped) - Adjust	7-47
Fuse replacement	7-48
Protecting the electronic and electrical systems during battery charging or welding	7-49
Dust screen	7-52

Storage

Tractor storage	7-53
-----------------------	------

8 TROUBLESHOOTING

Fault code resolution

Maintenance - Troubleshooting	8-1
-------------------------------------	-----

9 SPECIFICATIONS

General specification	9-1
Tractor dimensions	9-6
Transmission - Speeds	9-8

10 FORMS AND DECLARATIONS

Pre-delivery report - Owner's copy	10-1
Pre-delivery report - Dealer's copy	10-3

1 - GENERAL INFORMATION

Note to the owner

Congratulations on your purchase of NEW HOLLAND 8010 / 9010 tractor. You are now a proud owner of the world's premium brand tractor and one that is also a firm favorite of the Indian farmer.

The 3032, 3037 / 3230, 3032TX / 3037TX / 3230 TX, 3510 / 4010 / 4510 / 4710, 3630TX Plus+ / 3630TX Super / 3600-2TX, 3600-2TX All Rounder Plus+, 5630 TX Plus+, 5500 / 6500 / 7500 and 6010 / 6510 / 7510 tractors are manufactured by CNH Industrial (India), the World's leading manufacturer of agricultural tractors, combine harvesters and other agricultural equipment. NEW HOLLAND operates in more than 160 countries and nearly 4 crore machines are at work worldwide. Our global network is made up of nearly 12,000 dealers extending product support, customer service and spare parts back-up to our customers.

The Company's mission is "to be a customer-driven organization". Together with our dealer network we will provide you the best in customer support to ensure trouble free performance and enable you to maximise tractor productivity. Each dealer is trained by New Holland and is equipped to give you the best possible service support.

The following pages of the operator's manual will provide you detailed information on operating the tractor, safety and regular maintenance. Your Dealer will personally install your new tractor, explain the Company's warranty policy and give full details of your tractor care. However, in case you have any further specific product or service related requirement, kindly contact as under

Service Department

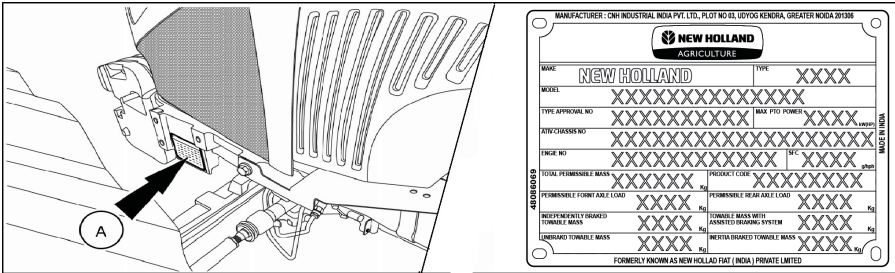
CNH Industrial (India) Pvt. Ltd.

Industrial Plot No. 3 ,
Udyog Kendra, Greater Noida,
Distt. : Gautam Budh Nagar (Uttar Pradesh) - 201 306
Customer Care Toll Free : 1800-419-0124 (Timings 10.00 a.m to 6.00 p.m)
Website : www.newhollandindia.co.in
CIN : U29220MH1992PTC069675
We look forward to a long beneficial relationship.

Product identification

Vehicle Identification Plate (VIP)

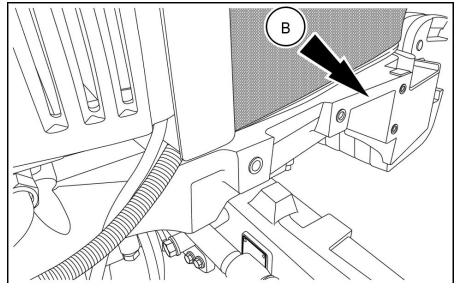
The VIP **(A)** is located on the left-hand side of the front axle support. The first line represents the tractor make followed by type, while the second line represents the model. The fourth line represents the chassis number. The fifth line represents the engine number followed by specific fuel consumption. Record the information in image 1 for quick reference.



GNIL17TRO0101FA 1

Vehicle Identification Number (VIN)

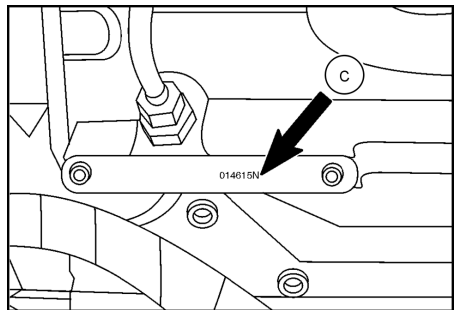
The tractor serial number, unit code, and engine serial number **(B)** are stamped on the right-hand side of the front axle support. These numbers are also repeated on the VIP.
VIN _____



GNIL15TR00152AB 2

Engine identification number

The engine serial number **(C)** is stamped on the right-hand side of the engine cylinder block. This number is repeated on the VIP and also stamped on the right-hand side of the front axle support. Record the engine serial number below for quick reference.
Engine serial number _____

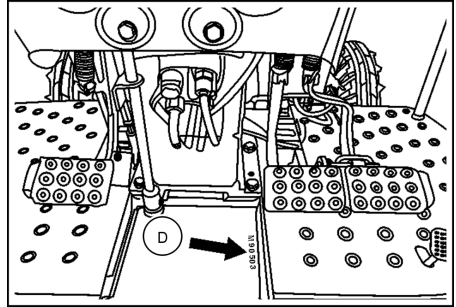


GNIL13TR00003AA 3

Transmission identification number

The transmission serial number (**D**) is stamped on the top of transmission housing, near the brake pedals. This information is repeated on the VIP. Record the transmission serial number below for quick reference.

Transmission serial number



2 - SAFETY INFORMATION

Safety rules

General safety rules

Modifications made to this machine may increase the likelihood or potential for debris accumulations that would normally not be present. Modifications include frame-mounted attachments, plates, screens, or other aftermarket equipment. Operators of modified machines must be aware of accumulations of organic debris and/or material and overall machine cleanliness.

Modified machines require additional and more frequent inspection and cleaning during usage. The machine may require inspection and cleaning multiple times per day during usage. Operators must be aware of the operating environment and conditions. Operators must take appropriate actions to maintain the machines during use. In particular, pay attention to the following machine areas:

1. In and around the engine compartment
2. Hot exhaust components
3. Moving, turning, or rotating machine components

Operators that operate the machine in a typical applications and/or conditions must be aware of accumulations of organic debris and/or material and overall machine cleanliness. Pay particular attention where material accumulations are possible or may result.

Machines that operate in a typical applications or conditions require additional and more frequent inspection and cleaning during usage. The machine may require inspection and cleaning multiple times per day during usage. Operators must be aware of the operating environment and conditions. Operators must take appropriate actions to maintain the machines during use. In particular, pay attention to the following machine areas:

1. In and around the engine compartment
2. Hot exhaust components
3. Moving, turning, or rotating machine components


Personal safety





This is the safety alert symbol. It is used to alert you to potential personal injury hazards. Obey all safety messages that follow this symbol to avoid possible death or injury.

Throughout this manual you will find the signal words DANGER, WARNING, and CAUTION followed by special instructions. These precautions are intended for the personal safety of you and those working with you.

Read and understand all the safety messages in this manual before you operate or service the machine.

 **DANGER** indicates a hazardous situation that, if not avoided, will result in death or serious injury.

 **WARNING** indicates a hazardous situation that, if not avoided, could result in death or serious injury.

 **CAUTION** indicates a hazardous situation that, if not avoided, could result in minor or moderate injury.

Machine safety

NOTICE: Notice indicates a situation that, if not avoided, could result in machine or property damage.

Throughout this manual you will find the signal word 'Notice' followed by special instructions to prevent machine or property damage. The word 'Notice' is used to address practices not related to personal safety.

Information

NOTE: Note indicates additional information that clarifies steps, procedures, or other information in this manual.

Throughout this manual you will find the word Note followed by additional information about a step, procedure, or other information in the manual. The word Note is not intended to address personal safety or property damage.

General safety rules

Use caution when you operate the machine on slopes. Raised equipment, full tanks, and other loads change the center of gravity of the machine. The machine can tip or

roll over when near ditches and embankments or uneven surfaces.

Never permit anyone other than the operator to ride on the machine.

Never operate the machine under the influence of alcohol or drugs, or while you are otherwise impaired.

When digging or using ground-engaging attachments, be aware of buried cables. Contact local utilities to determine the locations of services.

Pay attention to overhead power lines and hanging obstacles. High voltage lines may require significant clearance for safety.

Hydraulic oil or diesel fuel leaking under pressure can penetrate the skin, causing serious injury or infection.

- Do not use your hand to check for leaks. Use a piece of cardboard or paper.
- Stop the engine, remove the key, and relieve the pressure before you connect or disconnect fluid lines.
- Make sure that all components are in good condition. Tighten all connections before you start the engine or pressurize the system.
- If hydraulic fluid or diesel fuel penetrates the skin, seek medical attention immediately.
- Continuous long term contact with hydraulic fluid may cause skin cancer. Avoid long term contact and wash the skin promptly with soap and water.

Keep clear of moving parts. Loose clothing, jewelry, watches, long hair, and other loose or hanging items can become entangled in moving parts.

Wear protective equipment when appropriate.

Do not attempt to remove material from any part of the machine while it is being operated or while components are in motion.

Make sure that all guards and shields are in good condition and properly installed before you operate the machine. Never operate the machine with shields removed. Always close access doors or panels before you operate the machine.

Dirty or slippery steps, ladders, walkways, and platforms can cause falls. Make sure these surfaces remain clean and clear of debris.

A person or pet within the operating area of a machine can be struck or crushed by the machine or its equipment. Do not allow anyone to enter the work area.

Raised equipment and/or loads can fall unexpectedly and crush persons underneath. Never allow anyone to enter the area underneath raised equipment during operation.

Never operate the engine in enclosed spaces as harmful exhaust gases may build up.

Before you start the machine, be sure that all controls are in neutral or park lock position.

Start the engine only from the operator's seat. If you bypass the safety start switch, the engine can start with the transmission in gear. Do not connect or short across terminals on the starter solenoid. Attach jumper cables as described in the manual. Starting in gear may cause death or serious injury.

Always keep mirrors, all lighting, and Slow-Moving Vehicle (SMV) emblem clean to provide the best possible visibility while you operate the machine.

Operate controls only when seated in the operator's seat, except for those controls

expressly intended for use from other locations.

Before you leave the machine:

1. Park the machine on a firm, level surface.
2. Put all controls in neutral or park lock position.
3. Engage the parking brake. Use wheel chocks if required.
4. Lower all hydraulic equipment — Implements, header, etc.
5. Turn off the engine and remove the key.

When, due to exceptional circumstances, you would decide to keep the engine running after you leave the operator's

General maintenance safety

Keep the area used for servicing the machine clean and dry. Clean up spilled fluids.

Service the machine on a firm, level surface.

Install guards and shields after you service the machine.


Close all access doors and install all panels after servicing the machine.

Do not attempt to clean, lubricate, clear obstructions, or make adjustments to the machine while it is in motion or while the engine is running.

Always make sure that working area is clear of tools, parts, other persons and pets before you start operating the machine.

Unsupported hydraulic cylinders can lose pressure and drop the equipment, causing a crushing hazard. Do not leave equipment

station, then you must follow these precautions:

1. Bring the engine to low idle speed.
2. Disengage all drive systems.
3.  **WARNING**

Some components may continue to run down after you disengage drive systems.

Make sure all drive systems are fully disengaged.

Failure to comply could result in death or serious injury.

W0113A

Shift the transmission into neutral.

4. Apply the parking brake.

in a raised position while parked or during service, unless the equipment is securely supported.

Jack or lift the machine only at jack or lift points indicated in this manual.

Incorrect towing procedures can cause accidents. When you tow a disabled machine follow the procedure in this manual. Use only rigid tow bars.

Stop the engine, remove the key, and relieve pressure before you connect or disconnect fluid lines.

Stop the engine and remove the key before you connect or disconnect electrical connections.

Scalding can result from incorrect removal of coolant caps. Cooling systems operate under pressure. Hot coolant can spray out if you remove a cap while the system is hot. Allow the system to cool before you remove

Thank you so much for reading.
Please click the “Buy Now!”
button below to download the
complete manual.



After you pay.

You can download the most
perfect and complete manual in
the world immediately.

Our support email:

ebooklibonline@outlook.com