

OPERATOR'S MANUAL

TT55F

TT65F

TT75F

TT55

TT65

TT75

Tractor

Part number 48140374

1st edition English

October 2018



Contents

1 GENERAL INFORMATION

NOTE TO THE OWNER.....	1-1
Engine identification	1-3
Nameplate	1-3
Ecology and environment	1-4
Run-in period of a new machine.....	1-5
Universal Symbols.....	1-6
Noise levels.....	1-6

2 SAFETY INFORMATION

Safety rules	2-1
Roll over protective struture (ROPS)	2-2
Operation on a slope	2-2
Safety decals – Standard version	2-3
Safety decals – Narrow Version	2-10
Before operating the tractor	2-16
Driving the vehicle	2-16
Machine operation.....	2-17
Power Take-Off (PTO) operation	2-19
Maintenance.....	2-19
Diesel fuel	2-21
Fire or Explosion Prevention	2-21
Intended use statement	2-22

3 CONTROLS AND INSTRUMENTS

Access to operator's platform

General check	3-1
Access to operator's platform	3-2
Rearview mirrors	3-2
Overview – Header – Standard version	3-3
Overview – Header – Narrow Version	3-4

Operator's seat

Operator's seat	3-5
Shoulder belt	3-6

Forward controls

Ignition key	3-7
Work lamps	3-7
Hazard warning light switch	3-7
Horn switch	3-8
Clutch pedal	3-8
Brake pedals	3-9
Hand throttle.....	3-10
Controls valve	3-11

Left-hand side controls

Left-hand side controls	3-12
-------------------------------	------

Right-hand side controls

Parking brake	3-12
Hydraulic controls	3-13

Rearward controls

Hydraulic controls – Narrow Version	3-14
---	------

Instrument cluster panel

Dashboard	3-14
Gauges	3-16

4 OPERATING INSTRUCTIONS

Commissioning the unit

General instructions	4-1
Filling the fuel tank	4-2

Starting the unit

Starting the engine	4-3
Booster battery procedure	4-4

Stopping the unit

Stopping the engine	4-5
---------------------------	-----

Moving the unit

Driving the vehicle	4-5
---------------------------	-----

5 TRANSPORT OPERATIONS

Preparing for road transport

Machine loading	5-1
-----------------------	-----

Recovery transport

Machine towing	5-1
----------------------	-----

6 WORKING OPERATIONS

General information

Traction front wheel drive (FWD)	6-1
Differential lock	6-2

TRANSMISSION

Operation - 8x2 Transmission	6-3
Travel speeds – 8x2 Transmission	6-5
Operation – 12x3 transmission with creeper (when equipped)	6-7
Decal information speeds	6-8
Foot throttle pedal	6-9

REAR POWER TAKE-OFF

Safety rules – Power Take-Off (PTO)	6-10
Power Take-Off (PTO) - Operating – Standard version	6-12
Power Take-Off (PTO) - Operate – Narrow Version	6-13
Operating speeds of the Power Take-Off (PTO)	6-14

REAR HITCH

Hydraulic system	6-15
Operation of the hydraulic system	6-15

HYDRAULIC REMOTE CONTROL VALVES

Operation with remote valves	6-20
------------------------------------	------

THREE POINT HITCH

Attach the implement on the hydraulic lift	6-21
Setups of the three-point hydraulic lift	6-23

DRAWBARS AND TOWING ATTACHMENTS

General information	6-27
Safety chain	6-27
Attaching a trailer	6-28
Tractor drawbar	6-28

Tractor ballasting

Tire care – Wheels	6-29
Tires – Calibration and assembly safety	6-32
Tires – Parts of the tire	6-33
Tire types – For the application	6-34
Tires – General features	6-35
Front wheels - General specification – Compatibility table	6-38
Assembly – Tires	6-42
Tires – Recommendations for calibration	6-44
Tires – Calibration	6-46
Tire pressures and permissible loads	6-47
Tires – Compatibility of front x rear tires	6-49
Tires – Skid rate	6-51
Liquid ballast	6-55
Liquid ballast – Capacity table	6-58
Rear Ballast solid	6-62
Wheels rims - Adjustments	6-64

MECHANICAL FRONT DRIVE (MFD) AXLES

Steering stops	6-65
Wheels – Mounting depth	6-67
Front wheel track adjustment.....	6-68
Powered front axle - Alignment.....	6-72

Rear axle

Rear wheel track adjustment	6-73
-----------------------------------	------

7 MAINTENANCE

General information

Introduction	7-1
Fuel handling precautions	7-3
Diesel fuel	7-5
Specifications - Biodiesel fuel	7-6
Organic Acid Technology (OAT) coolant.....	7-8
General instructions from the machine	7-9
Protective devices	7-10

Maintenance planning

Maintenance chart.....	7-11
------------------------	------

WHEN THE WARNING LAMP LIGHTS

Air filter	7-13
------------------	------

EVERY 10 HOURS OR EACH DAY

Engine oil level	7-15
Engine coolant concentration level	7-16
Fuel prefilter/water separator	7-16
Fuel filter – Standard version	7-17
Fuel filter – Narrow Version	7-18
Battery	7-18
Cleaning the radiators	7-19
Wheel nuts torque	7-19

FIRST 50 HOURS

First 50 hours	7-20
----------------------	------

EVERY 50 HOURS

Clutch.....	7-21
Service brakes.....	7-21
Lubrication points – Standard version	7-22
Lubrication points – Narrow Version	7-24

EVERY 300 HOURS

Fuel filter – Standard version	7-26
--------------------------------------	------

Fuel filter – Narrow Version	7-26
Fuel transfer pump	7-27
Fuel injection system - Cleaning	7-28
Engine oil	7-29
Engine drive belts	7-31
Engine crankcase breather filter.....	7-32
Hydraulic system oil level – Standard version	7-32
Hydraulic system oil level – Narrow Version	7-33
Transmission oil filter	7-34
Front axle oil – Standard version	7-35
Front axle oil – Narrow Version	7-35

EVERY 600 HOURS

Wheel hub oil – Standard version	7-36
Wheel hub oil – Narrow Version	7-37
Wheel nuts torque	7-38

EVERY 1200 HOURS OR ANNUALLY

Transmission oil	7-39
Front axle oil – Standard version	7-39
Front axle oil – Narrow Version	7-40
Fuel tank.....	7-40
Engine valves lash check adjust	7-41
Engine air filters	7-41
Front axle drive Shaft – Check	7-42

Every 4000 hours or every 4 years

Engine coolant	7-43
----------------------	------

GENERAL MAINTENANCE

Air filter dust unloading valve.....	7-44
Bleeding the fuel injection system – Standard version	7-44
Bleeding the fuel injection system – Narrow Version	7-45
Battery	7-46
Engine drive belt.....	7-48
Fuses and relays	7-50
Headlights	7-51
Work lights.....	7-51
Protecting the electronic and electrical systems during battery charging or welding..	7-53

Storage

Storing the machine	7-54
Preparation for use after storage	7-55

8 TROUBLESHOOTING

Symptom(s)

Motor	8-1
Hydraulic systems	8-2

Three-point hitch	8-3
Electrical	8-3

9 SPECIFICATIONS

Overall dimensions – Standard version	9-1
Overall dimensions – Narrow Version	9-4
Fluids and lubricants	9-5
Motor – Standard version	9-7
Drive – Standard version	9-7
Hydraulic system – Standard version	9-7
Brakes – Standard version	9-8
Electrical – Standard version	9-8
Motor – Narrow Version	9-8
Drive – Narrow Version	9-9
Hydraulic System – Narrow Version	9-9
Brakes – Narrow Version	9-9
Electrical – Narrow Version	9-9

1 - GENERAL INFORMATION

NOTE TO THE OWNER

General Information

This Manual has been prepared to assist you in the correct procedure for running- in, driving and operating and for the maintenance of your new tractor. Read this manual carefully. Your tractor is intended for use in normal and customary agricultural applications.

If you require advice concerning your tractor at any time, do not hesitate to contact your NEW HOLLAND dealer. He has factory trained personnel, genuine manufacturers' parts and the necessary equipment to carry out all your service requirements.

The specification are provided for your information and guidance. For further information concerning your tractor and equipment, see your NEW HOLLAND dealer.

All data given in this book is subject to production variations. Dimensions and weights are approximate. The illustrations do not necessarily show tractors in standard condition or imply that these features are available in all countries. For more precise information about a specific tractor, consult your NEW HOLLAND dealer.

Your tractor has been designed and built to give maximum performance, economy and ease of operation under a wide variety of operating conditions. Prior to delivery, the tractor was carefully inspected, both at the factory and by your dealer to ensure that it reaches you in optimum condition. To keep it in this condition and guarantee that its operation is problem-free, it is important that routine service procedures, as specified in the maintenance table on page 7-11, are carried out at the recommended intervals.

Operator's manual storage

The Operator's Manual supplied with your tractor is an important source of information and should be stored safely.

The manual is written specifically for your tractor so it is important that you make a note of the print number and issue date which can be found on the cover. In the event the manual is lost or damaged it can be replaced with the correct version.

About this manual

This manual gives information for use of your machine, as intended and under the conditions foreseen by the manufacturer during normal operation and routine service and maintenance.

Read and understand it; keep it in good condition and always keep it in a safe place.

This manual does not contain all the information related to periodical service, converting and repairs to be carried out by NEW HOLLAND professional service personnel.

The Table of Contents page(s) are provided to have an overview of main manual's topics. A detailed alphabetic index is available at the end of this manual for locating specific items.

When you read this manual, you will find the term AFWD. This is an abbreviation for Auxiliary Front Wheel Drive.

Normal operation

- Normal operation means the use of the tractor for the purpose intended by the manufacturer by an operator familiar with the tractor and the mounted or towed equipment and complying with the information for operation and safe practices, as specified by the manufacturer in this manual and by the decals on the tractor and the equipment.
- Normal operation includes the preparation and storage of the tractor, swinging components into work position and vice versa, adding or removing ballast and picking up and setting off attachments.
- Normal operation includes the adjustment and setting of the tractor and equipment, for the specific condition of the field and/or the crop.

Routine service

- Routine service and maintenance means activities that must be done daily by an operator familiar with the tractor characteristics and complying with the information for routine service and safe practices, as specified by the manufacturer in this manual and by decals on the tractor, in order to maintain its proper function. The routine service includes activities such as filling up, cleaning, washing, topping up fluid, applying grease, and replacing consumable items such as bulbs.

Converting, periodical service and repair

- Periodical service means activities that must be done at defined intervals by trained personnel familiar with the tractor characteristics and which are complying with the information for periodical service and safe practices, as partly specified by the manufacturer in this manual and in other Company literature, in order to maintain the expected life time of the tractor.
- Converting means activities that must be done by professional service personnel familiar with the tractor characteristics and complying with the information for converting, as partly specified by the manufacturer in this manual, in assembly instructions or in other Com-

pany literature, in order to fit the tractor to a specific configuration.

- Repair means activities that must be done by professional service personnel only familiar with the tractor characteristics and complying with the information for repair, as specified by the manufacturer in the dealer's workshop manual, in order to restore the proper function of the tractor after a failure or degradation of performance.

Cleaning the tractor

When using a high-pressure washer, do not stand close to the tractor and avoid directing the jet at the electrical components, electrical connections, breathers, seals, filling nozzles, etc. Never direct a jet of cold water at a hot engine or exhaust.

Failure to comply with these rules will render the warranty null and void.

Security

The pages in Section 2 list the precautions to be observed to ensure your safety and the safety of others. Read the safety precautions and follow the advice offered before operating the tractor.

Servicing after the first 50 hours

On page **7-20** you will find the operations that need to be performed after the first 50 hours of service.

This service should be performed by your NEW HOLLAND dealer.

NOTICE: It is important that the **50 h** service is carried out in line with the recommendation to guarantee that the tractor is providing optimal performance and efficiency.

Replacement Parts

It should be pointed out that genuine parts have been examined and approved by the Company. The installation

and/or usage of 'non-genuine' products could have negative effects upon the design characteristics of your tractor and thereby affect its safety. The Company is not liable for any damage caused by the use of 'non-genuine' parts and accessories. Only genuine replacement parts should be used. The use of non-genuine parts may invalidate legal approvals associated with this product.

It is prohibited to carry out any modifications to the tractor unless specifically authorised, in writing, by the After Sales Service department of the Company.

Warranty

Your tractor is warranted according to legal rights in your country and the contractual agreement with the selling dealer. No warranty shall, however, apply if the tractor has not been used, adjusted and maintained according to the instructions given in the Operator's Manual.

Using Biodiesel

NOTICE: Before using Biodiesel fuels in your tractor, refer to the information on page **7-6** regarding the storage and use of Bio diesel fuels.

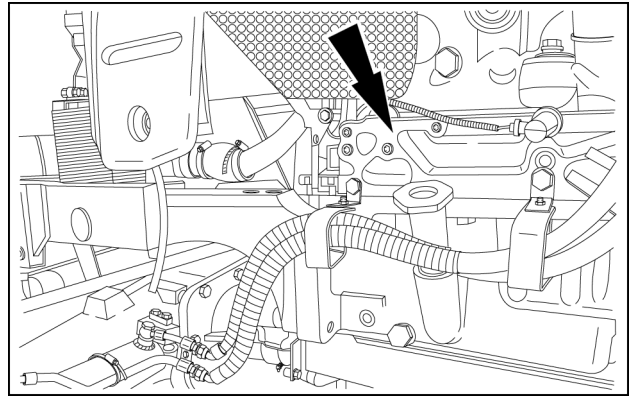
Tampering with the engine or fuel system

ATTENTION: Your machine's engine and the fuel system were designed and configured to meet the emissions standards required by the laws in your country or region. Dealers, customers, operators, and users are strictly prohibited from tampering with the machine's factory settings. Failure to comply with this rule invalidates the machine's warranty and could result in government fines, legal action, and possible confiscation of the machine until rework to original condition is completed. Engine maintenance and repairs must be done by an authorized technician only.

Engine identification

This engine identification is engraved on the left-hand side of the engine block. Note down the number here:

Engine Serial No.: _____

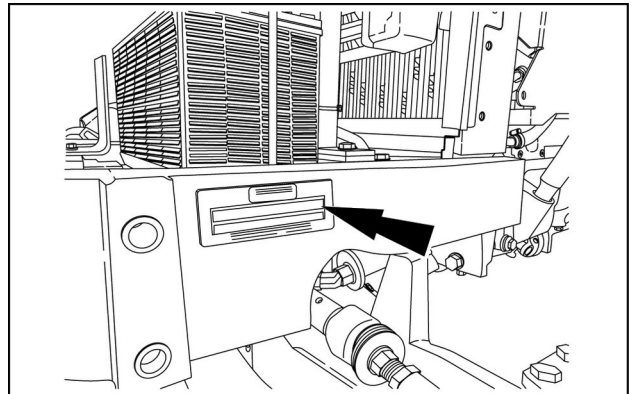


CUIL14TR0954AA 1

Nameplate

The serial number identification is engraved on the support cradle of the front axle, on the left-hand side and to the front. Note down that identification here.

Chassis no.: _____



CUIL18TR00080AA 1

Ecology and environment

Soil, air, and water quality is important for all industries and life in general. When legislation does not yet rule the treatment of some of the substances that advanced technology requires, sound judgment should govern the use and disposal of products of a chemical and petrochemical nature.

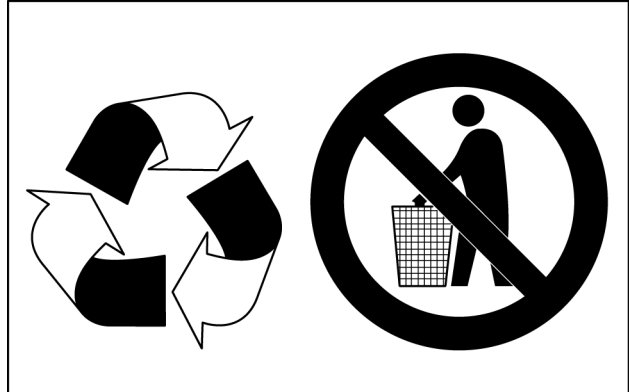
Familiarize yourself with the relative legislation applicable to your country, and make sure that you understand this legislation. Where no legislation exists, obtain information from suppliers of oils, filters, batteries, fuels, anti-freeze, cleaning agents, etc., with regard to the effect of these substances on man and nature and how to safely store, use, and dispose of these substances. Your NEW HOLLAND dealer can also provide assistance.

Helpful hints

- Avoid the use of cans or other inappropriate pressurized fuel delivery systems to fill tanks. Such delivery systems may cause considerable spillage.
- In general, avoid skin contact with all fuels, oils, acids, solvents, etc. Most of these products contain substances that may be harmful to your health.
- Modern oils contain additives. Do not burn contaminated fuels and or waste oils in ordinary heating systems.
- Avoid spillage when you drain fluids such as used engine coolant mixtures, engine oil, hydraulic fluid, brake fluid, etc. Do not mix drained brake fluids or fuels with lubricants. Store all drained fluids safely until you can dispose of the fluids in a proper way that complies with all local legislation and available resources.
- Do not allow coolant mixtures to get into the soil. Collect and dispose of coolant mixtures properly.
- Do not open the air-conditioning system yourself. It contains gases that should not be released into the atmosphere. Your NEW HOLLAND dealer or air-conditioning specialist has a special extractor for this purpose and can recharge the system properly.
- Repair any leaks or defects in the engine cooling system or hydraulic system immediately.
- Do not increase the pressure in a pressurized circuit as this may lead to a component failure.

Battery recycling

Batteries and electric accumulators contain several substances that can have a harmful effect on the environment if the batteries are not properly recycled after use. Improper disposal of batteries can contaminate the soil, groundwater, and waterways. NEW HOLLAND strongly recommends that you return all used batteries to a NEW HOLLAND dealer, who will dispose of the used batteries or recycle the used batteries properly. In some countries, this is a legal requirement.



NHIL14GEN0038AA 1

Mandatory battery recycling

NOTE: The following requirements are mandatory in Brazil.

Batteries are made of lead plates and a sulfuric acid solution. Because batteries contain heavy metals such as lead, CONAMA Resolution 401/2008 requires you to return all used batteries to the battery dealer when you replace any batteries. Do not dispose of batteries in your household garbage.

Points of sale are obliged to:

- Accept the return of your used batteries
- Store the returned batteries in a suitable location
- Send the returned batteries to the battery manufacturer for recycling

Run-in period of a new machine

Your new machine will provide long and reliable service if given proper care during the first 50-hour running-in period and if serviced at the recommended intervals.

Run-in recommendations

Avoid overloading the engine. Operating in too high a gear under heavy load may cause excessive engine overloading. Overloading occurs when the engine will not respond to a throttle increase.

Do not operate without a load on the engine. This can be as harmful to the engine as overloading. Vary the type of operation carried out so the engine is submitted to a mix of heavy and light loads during the running-in period.

Use the lower gear ratios when towing heavy loads and avoid continuous operation at constant engine speeds. Operating the tractor in too low a gear with a light load and high engine speed will waste fuel. Select the correct transmission ratio for each particular operation to save fuel and reduce engine wear.



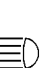

Check the instruments and warning lights frequently and keep the radiator and oil reservoirs topped up to the recommended levels.

Fuel saving tips

1. Store fuel in properly cleaned, rust and contaminant free containers.
2. Always fill the fuel reservoir at the end of each day to reduce overnight condensation of moisture in the air, so as to avoid damage to the fuel system.
3. Fuel filters should be replaced as per recommended time schedule as the filtering capacity is not retained after this specified time. It may allow harmful contamination and damage the fuel injection system. Follow the maintenance schedule to drain the water from the filters and clean the supply pump filter.
4. Always use genuine fuel filters. See your NEW HOLLAND dealer.
5. Repair diesel leaks, if any, immediately.
6. Dirt particles that may enter the engine cause premature wear of lining and piston rings. This causes loss of power and excessive consumption of engine oil and fuel. Make sure that there are no leaks from the hoses and that the seal of the air filter chamber is in good condition. Keep the hose clamps tightened.
7. Follow the run-in procedure provided in this manual to achieve optimal performance of your tractor.
8. If you keep the engine running at idle speed unnecessarily for long periods, this wastes fuel.
9. Do not rest your foot on the clutch pedal as this will cause clutch slippage, loss of engine power and increased fuel consumption. Maintain the specified play in the clutch pedal.
10. Always drive the tractor in the proper gear. Use a lower gear to drive down a slope and use the brakes sparingly.
11. Maintain the proper tire pressures for field work as well as for roadwork. Refer the tyre pressure chart given in this manual. Worn out tyres cause wheel slippage and waste fuel. Either retread or discard the full set of tires if they are very worn. Adhere to tyre ballasting as and when required to reduce wheel slippage and fuel consumption.
12. Always use the appropriate implements to reduce diesel fuel wastage. Implements should be maintained in good condition, as usage of worn out implements will waste fuel.
13. Always plough length wise and plan your field run to reduce fuel consumption. Adjust the wheel gauge to suit the implement and avoid overlap when you work in the field.
14. Adjust the proper engine rotation when you work with equipment driven by the Power Take-Off (PTO). If you select the wrong rotation, it will result in excess fuel consumption.

Universal Symbols

As a guide to the operation of the machine, various universal symbols have been utilized on the instruments, controls, switches, and fuse box. The symbols are shown below with an indication of their meaning.

	Heater plug for cold start		Turning signal		Power Take-Off (PTO)		Reaction control
	Alternator charging	KAM	Activated memory	N	Transmission in neutral		Accessories socket
	Fuel Level		Turn signals		Creeper selection		Implement socket
	Automatic fuel shut-off		Turn signals - one trailer		Low speed selection		Percentage slip
	Engine speed (rpm x 100)		Turn signals - two trailers		High speed selection		Raising of the hydraulic lift
	Hour meter		Wind shield washer		Road speed		Rear hitch lower
	Engine Oil Pressure		Windscreen wash wipe		Differential Lock		Hydraulic lift height threshold
	Engine Coolant Temperature		Heating temperature control		Rear axle oil temperature		Hydraulic lift disabled
	Coolant Level		Cab recirculation fan		Trans Oil Pressure		Transmission filters and hydraulic filters
	Machine lights		Air conditioner		Auxiliary Front Wheel Drive (AFWD) operated		Remote control valve extension
	Main beam head		Air Filter Restriction		Warning!		Remote control valve command retraction
	Dip Beam		Parking brake		Danger warning lights		Remote control valve flotation
	Work lamps		Brake fluid level		Variable control		Malfunction! See Operator's
	Stop Lamp		Trailer brake		Pressurized! Open carefully		Malfunction! (alternative symbol)
	Horn		Warning! Corrosive substance		Position control		Brake fluid level
	Trans Oil Pressure						

Noise levels

⚠ CAUTION

Avoid possible hearing loss!
The machine operator must wear hearing protection.
Failure to comply could result in minor or moderate injury.

C0070A

⚠ WARNING

Personal Protective Equipment (PPE) required.

When assembling, operating, or servicing the machine, wear protective clothing and PPE necessary for the particular procedure. Some PPE that may be necessary includes protective shoes, eye and/or face protection, hard hat, heavy gloves, filter mask, and hearing protection.

Failure to comply could result in death or serious injury.

W0353A

Noise is considered the most common of the pollutants that cause physical problems. Brazilian legislation establishes maximum limits for intensity and continuous or intermittent noise exposure durations. The tolerance limits for continuous and intermittent noise are detailed in the Regulatory Standard (NR15). See the legislation in force in your country.

It is important to stress that the use of ear protectors is recommended for the Operator and people who work close to the machines, regardless of the noise intensity and time of exposure.

During operation, the machines may be driving or powering other equipment, and this in turn also produces noise. As a result, the real noise levels perceived by the Operator and people who work close to the machines can vary considerably. Always consider wearing ear protectors that are good quality, intact, and that offer maximum protection.

Thank you so much for reading.
Please click the “Buy Now!”
button below to download the
complete manual.



After you pay.

You can download the most
perfect and complete manual in
the world immediately.

Our support email:

ebooklibonline@outlook.com