

ORIGINAL INSTRUCTIONS

OPERATOR'S MANUAL

Workmaster™ 35

Workmaster™ 40

Tier 4B (final)

Compact Tractor

Workmaster™ 35 ROPS - PIN LSM0W35Rxx0010001 and above

Workmaster™ 40 ROPS - PIN LSM0W40Rxx0010001 and above

Part number 51485746

2nd edition English

July 2018

Replaces part number 48056596



Contents

1 GENERAL INFORMATION

Note to the owner.....	1-1
Intended use.....	1-2
Electromagnetic Compatibility (EMC)	1-4
Product identification	1-5
Operator's manual storage	1-6
Machine orientation.....	1-7
Emissions overview	1-8

2 SAFETY INFORMATION

Safety rules and signal word definitions	2-1
Safety rules	2-2
Do not operate tag.....	2-9
Roll Over Protective Structure (ROPS) frame - Personal safety	2-10
Ecology and the environment	2-11
Safety signs	2-12
Instructional signs	2-27
Safety features	2-35

3 CONTROLS AND INSTRUMENTS

Access to operator's platform

Access to operator's platform	3-1
-------------------------------------	-----

Operator's seat

Seat belt	3-1
Mechanically - adjusted operator seat.....	3-2
Roll Over Protective Structure (ROPS)	3-3

Forward controls

Instrument panel.....	3-5
Engine fault code display	3-9
Hydrostatic transmission - Operate.....	3-16
Shuttle lever	3-17
Clutch pedal	3-18
Brake pedal	3-19
Foot throttle pedal	3-20
Hand throttle lever	3-21
Horn switch (optional)	3-22
Power Take-Off (PTO) switch.....	3-23
Key switch	3-24
Differential lock lever - Operating.....	3-25
Hydrostatic transmission pedal - Operating	3-26
Tilt steering lever - Operating.....	3-27
Multifunction light switch.....	3-28

Engine Speed Management (ESM) switch	3-28
Engine Speed Management (ESM) Up/Down switch	3-29
DPF switch	3-30

Left-hand side controls

Transmission range lever	3-31
Park brake	3-32
Four-Wheel Drive(4WD) lever	3-33
Mid Power Take-Off (PTO) (optional).....	3-34

Right-hand side controls

Hydraulic Power Lift (HPL)	3-35
Rear remote control valve(s) - optional	3-36
Mid-mount control valve	3-38
Mechanical transmission lever	3-40

Exterior controls

Hood release latch	3-41
--------------------------	------

4 OPERATING INSTRUCTIONS

Commissioning the unit

Engine break-in procedure	4-1
Diesel Particulate Filter (DPF) regeneration.....	4-2
Engine speed management	4-7
Power Take-Off (PTO) operation	4-8
Three-point hitch	4-10
Attaching three-point equipment	4-11
Drawbar - Operating	4-14
Top link installation	4-15
Drop rate control valve	4-16

Starting the unit

Key switch - Operating	4-17
Glow plugs - Cold start aid	4-18
Starting the engine (Mechanical)	4-19
Starting the engine (Hydrostatic transmission)	4-22
Starting the engine with jumper cables	4-25

Stopping the unit

Stopping the engine	4-26
Emergency stopping the engine	4-27
Brakes	4-28

Moving the unit

Steering wheel - Adjust.....	4-30
------------------------------	------

Steering - Operation	4-31
Transmission - Warm-up	4-32
Hydrostatic transmission - Operation	4-33
Mechanical transmission external controls - Operation	4-35

Parking the unit

Parking the tractor	4-37
---------------------------	------

5 TRANSPORT OPERATIONS

Road transport

External lighting	5-1
Turn signal / Hazard lights - Identification	5-2
Turn signal / Hazard lights - Operation	5-3
Road lights - Operation	5-4
Work lights - Operation	5-5
External lighting - Operation (optional)	5-6
Brakes and controls - Driving	5-7

Shipping transport

Transporting by truck or trailer	5-8
--	-----

Recovery transport

Brakes and controls - Towing	5-8
------------------------------------	-----

6 WORKING OPERATIONS

General information

Ballast	6-1
Ballast weight requirements	6-2
Liquid ballast	6-4

7 MAINTENANCE

General information

General information	7-1
General specification - Diesel fuel	7-3
General specification - Biodiesel fuels	7-4
Refueling the tractor	7-6
Change engine coolant to Organic Acid Technology (OAT) coolant	7-7
Fluids and lubricants	7-9
Capacities	7-10

Maintenance planning

Maintenance chart	7-11
-------------------------	------

Every 10 hours or daily

Engine oil level - Check	7-12
Engine cooling system - Check.....	7-14

After first 50 hours

Engine oil and oil filter - Change	7-15
Hydraulic oil filter - Replace	7-17
Hydrostatic transmission oil filter - Replace	7-18
Roll Over Protective Structure (ROPS) - Check	7-19
Wheels - Bolts and Nuts - Tighten.....	7-20
Fuel water separator filter - Replace	7-21

Every 50 hours

Grease fittings - Lubricate	7-22
Transmission fluid level - Check.....	7-24
Clutch pedal free play - Adjust	7-25
Brake pedal free play - Adjust.....	7-26
Hydrostatic Transmission (HST) neutral position - Check and Adjust.....	7-27
Tire inflation pressure - Check.....	7-30
Front axle and differential oil level - Check.....	7-32
Air cleaner - Clean - Primary element	7-33

Every 100 hours

Fuel filter - Drain.....	7-34
--------------------------	------

Every 300 hours

Engine oil and oil filter - Change	7-34
Oil filter - Replace	7-35
Hydrostatic Transmission (HST) oil filter - Replace - HST system	7-36
Wheel bolts and nuts - Check	7-37
Air cleaner primary element - Replace	7-38

Every 500 hours

Fuel filter water separator - Replace	7-39
---	------

Every 600 hours

Front axle and differential fluid - Change.....	7-41
Transmission fluid - Change.....	7-43

Every 1000 hours

Air cleaner inner element - Replace.....	7-44
--	------

Every 1500 hours

Engine coolant - Draining and flushing	7-44
--	------

General maintenance

Fuel water separator filter - Bleed	7-45
Hydrostatic transmission (HST) neutral adjustment - Check	7-48
Engine belts - Adjust	7-49
Roll Over Protective Structure (ROPS) - Replace - Possible damage	7-50
Battery	7-51
Alternator	7-52
Headlight bulb - Replace	7-53
Turn signal/Hazard light bulb replacement	7-54
Flasher unit bulb - Replace	7-55
Wheels - Bolts and Nuts - Tighten	7-57
Front wheel toe-in - Adjust	7-58
Brake pedal free play - Adjust	7-59
Clutch pedal free play - Adjust	7-60

Fuse and relay locations

Fuse and relay locations	7-61
--------------------------------	------

Storage

Tractor storage	7-62
Removal of tractor from storage	7-63

8 TROUBLESHOOTING

Symptom(s)

Engine - Troubleshooting	8-1
Hydraulic Lift System - Troubleshooting	8-2
Steering - Troubleshooting	8-2
Hydrostatic transmission - Troubleshooting	8-3
Electrical system - Troubleshooting	8-3

9 SPECIFICATIONS

Tire inflation pressures	9-1
Rear wheel liquid ballast	9-2
General specification	9-3
Dimensions	9-8

10 ACCESSORIES

Accessories	10-1
-------------------	------

11 FORMS AND DECLARATIONS

Delivery report - owner copy	11-1
Delivery report - dealer copy	11-3

1 - GENERAL INFORMATION

Note to the owner

This manual contains information concerning the adjustment and maintenance of your new equipment. You have purchased a dependable machine, but only by proper care and operation can you expect to receive the performance and long service built into this equipment. Please have all operators read this manual carefully and keep it available for ready reference.

Your NEW HOLLAND dealer will instruct you in the general operation of your new equipment. (Refer to the 'Delivery Report' at the back of this manual.) Your dealer's staff of factory-trained service technicians will be glad to answer any questions that may arise regarding the operation of your machine. New Holland Top Service is also available. Call 1-866-NEWHLND (1-866-639-4563) or email na.topservice@cnh.com.

Your NEW HOLLAND dealer carries a complete line of genuine NEW HOLLAND service parts. These parts are manufactured and carefully inspected to insure high quality and accurate fitting of any necessary replacement parts. Be prepared to give your dealer the model and product identification number of your new equipment when ordering parts. Locate these numbers now and record them below. Refer to the 'General Information' section of this manual for the location of the model and product identification numbers of your machine.

PLEASE RECORD THE FOLLOWING INFORMATION


Model

Product Identification Number (PIN)

Engine number

Transmission number

Purchase date

	<p>This is the safety alert symbol. It is used with and without signal words to alert you to potential personal injury hazards. Obey all safety messages that follow this symbol to avoid possible death or injury.</p>
---	---

WARNING

**Illustrations in this manual may show protective shielding open or removed to better illustrate a particular feature or adjustment.
Replace all shields before operating the machine.
Failure to comply could result in death or serious injury.**

W0012A

ATTENTION: *The engine and fuel system on your machine is designed and built to government emission standards. Tampering by dealer, customers, operators, and end users is strictly prohibited by law. Failure to comply could result in government fines, rework charges, invalid warranty, legal action, and possible confiscation of the machine until rework to original condition is completed. Engine service and/or repairs must be done by a certified technician only!*

Improvements

CNH INDUSTRIAL AMERICA LLC is continually striving to improve its products. We reserve the right to make improvements or changes when it becomes practical and possible to do so, without incurring any obligation to make changes or additions to the equipment sold previously.

Intended use

⚠ WARNING

Roll-over hazard!

Always pull from the drawbar. DO NOT attach chains or ropes to the Roll Over Protective Structure (ROPS) for pulling purposes, as the machine could tip over. When driving through door openings or under low overhead objects, make sure there is sufficient clearance for the ROPS.

Failure to comply could result in death or serious injury.

W0463A

Your tractor is designed and made to pull, to carry, and to power a variety of mounted or towed equipment, although within some physical limits. The working speed and performance may depend on a number of various parameters, such as weather and terrain conditions. Though the tractor is designed to perform in combination with a variety of equipment in most crops and conditions, there may be a number of combinations of above parameters, for which there is severe degradation of performance of the tractor and/or its mounted or trailed equipment. If you notice degradation of performance, contact your dealer for assistance. He may have useful information for improvements, or a kit may be available to enhance the performance.

- Do not use the tractor for another purpose than intended by the manufacturer and outlined in this manual.
- Do not use the tractor beyond its limits of terrain gradient and stability as outlined further in this manual. Using the tractor beyond these limits may result in roll-over or tip-over. Observe the recommendations in this manual.
- Use only approved accessories and attachments that are designed for your machine. Consult your dealer on changes, additions or modifications that may be required for your machine. Do not make any unauthorized modifications to your machine.
- Do not use the tractor on higher speeds than allowed by the load and the environment. A wet surface or other low adherence conditions may increase the braking distance or result in vehicle instability. Always adapt your traveling speed according to the load of the vehicle and the characteristics of the road.
- Do not use the tractor near or on soft verges of canals and brooks or banks and verges that are undermined by rodents. The tractor may sink sideways and roll-over.
- Do not use the tractor on brittle bridge heads and poor bridge floors. These constructions may collapse and cause roll-over of the tractor. Always check out the condition and carrying capacity of bridges and ramps prior to engage.
- Do not use the tractor without wearing the seat restraint system during activities where roll-over or tip-over hazards exist. The Roll Over Protection Structure (ROPS) cab or ROPS structure will only be fully effective when the driver remains attached to his seat.
- Do not use equipment mounted on the tractor which is not correctly matching and firmly fixed. Such equipment may increase the risk for roll-over and hit the tractor when coming loose. Ensure that the dimensions of the three-point linkage interface of both the tractor and the equipment are matching according to the categories defined in ISO 730. Ensure that the dimensions and speed of the Power Take-Off (PTO) shaft on the tractors are matching those of the equipment.
- Do not use the tractor in combination with equipment, without having consulted the specific operator's manual provided with the equipment. The tractor is a universal tool to carry, tow, and drive a variety of equipment. This manual alone cannot provide you with all the information required for the safe operation of the combination.
- Do not use the tractor beyond its limits of dynamic stability. High speed, abrupt maneuvers, and fast and short cornering will increase the risk of roll-over.
- Do not use the tractor for pulling work, in cases where you do not know whether the load will yield, for instance when pulling stumps. The tractor may flip over when the stump is not yielding.
- Be cautious that the center of gravity of the tractor may increase when loads on the front-end loader or the three-point linkage are raised. In these conditions, the tractor may roll-over earlier than expected.
- Do not step down from the tractor without shutting down the PTO, shifting the transmission to park or neutral and applying the park brake, unless continued PTO operation is required for some equipment, such as pumps or wood chippers. The latter equipment may have an emergency stop device on the equipment itself, as human intervention is needed during operation. But other equipment, engaged and driven by the tractor will have no means to stop the power transmission, other than the PTO clutch of the tractor.
- You shall take the necessary precautions to always be aware of the possible presence of bystanders, certainly when maneuvering in confined areas, such as the farm yard and sheds. Keep people away from the tractor during work; ask bystanders to leave the field. There is not only the risk to be overrun by the tractor, but objects ejected by some

equipment mounted on the tractor, such as a rotary mower, may cause harm. Stones may be thrown further than the mowed crop. Pay the necessary attention while operating next to public roads or footpaths. Thrown objects can get projected outside the field and hit unprotected people like bikers or pedestrians. Wait to cut the edge of the field till it is clear of bystanders.

- Do not allow riders on the tractor; do not allow people standing on the access way or step to the cab when the tractor is moving. Your view to the left will be obstructed and a rider risks to fall from the tractor during unforeseen or abrupt movements.
- Always stay clear from implements operating area and especially do not stand between tractor and trailed vehicle either three-point linkage when operating lift controls; ensure no bystanders are near these operating areas.
- Your tractor may be equipped with a number of sensors to control safety functions. Tripping these sensors will result in a safe operation mode. Do not attempt to bypass any function on the tractor. You will be exposed to serious hazards, and moreover, the behavior of the tractor may become unpredictable.
- A tractor has only one operator station and is a one man operated vehicle. Other people on or around the tractor during normal operation are not allowed.
- All persons who will be operating this machine shall possess a valid local vehicle operating permit and/or other applicable local age work permits.
- The machine is designed and produced exclusively for agricultural use.
- The machine is not designed for light/heavy forestry applications; usage is prohibited for forestry applications.
- All other use will be considered to be contrary to the use specified by CNH INDUSTRIAL AMERICA LLC, who cannot be held liable for damage to property or the machine, or for personal injuries which may result.
- Persons who risk improper use will therefore assume the responsibility for any consequences arising from such use.
- Compliance with the instructions for use, maintenance and repairs described in this manual, are the essential pre-conditions for the use specified by CNH INDUSTRIAL AMERICA LLC.
- The machine must only be used, serviced, or repaired by personnel trained in the relevant working methods and safety regulations and who have been authorized to work on the machine.
- The engine and fuel system on your machine is designed and built to government emissions standards. Tampering by dealer, customers, operators and users is strictly prohibited by law. Failure to comply could result in government fines, rework charges, invalid warranty, legal action and possible confiscation of the machine until rework to original condition is completed. Engine service and/or repairs must be done by a certified technician only!
- The user must also observe the rules concerning general safety and accident prevention, including the Highway Code when driving on public highways.
- Any arbitrary modifications made to this machine will release CNH INDUSTRIAL AMERICA LLC from any liability resulting from damage or injury.
- CNH INDUSTRIAL AMERICA LLC and all its distribution organizations, inclusive of, but not restricted to, national, regional, or local distributors, cannot be held liable for damage resulting from the malfunction of parts and/or components not approved by CNH INDUSTRIAL AMERICA LLC.
- Under no circumstances will a guarantee be issued for products made or sold by CNH INDUSTRIAL AMERICA LLC that are damaged as a result of the malfunction of parts and/or components not approved by CNH INDUSTRIAL AMERICA LLC.

Electromagnetic Compatibility (EMC)

Interference may arise as a result of add-on equipment that may not necessarily meet the required standards. As such interference can result in serious malfunction of the unit and/or create unsafe situations, you must observe the following:

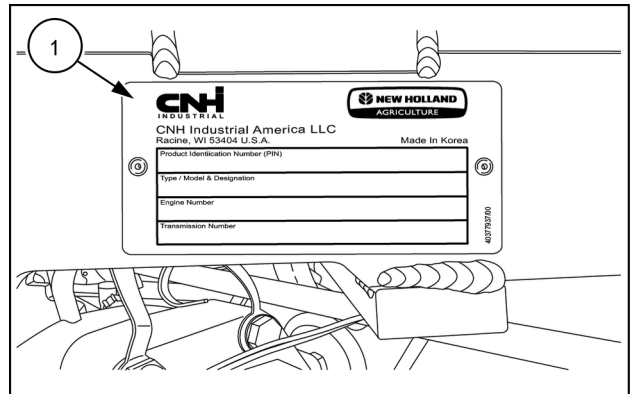
- The maximum power of emission equipment (radio, telephones, etc.) must not exceed the limits imposed by the national authorities of the country where you use the machine
- The electro-magnetic field generated by the add-on system should not exceed **24 V/m** at any time and at any location in the proximity of electronic components
- The add-on equipment must not interfere with the functioning of the on board electronics

Failure to comply with these rules will render the NEW HOLLAND warranty null and void.

Product identification

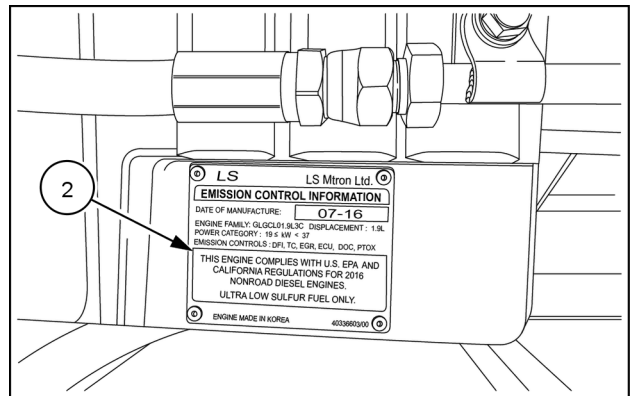
The numbers on the Product Identification Number (PIN) plate are important in the event your tractor should require future service. Record the PIN in the section provided on page 1-1.

The PIN plate (1) is located on the right-hand side of the front frame.



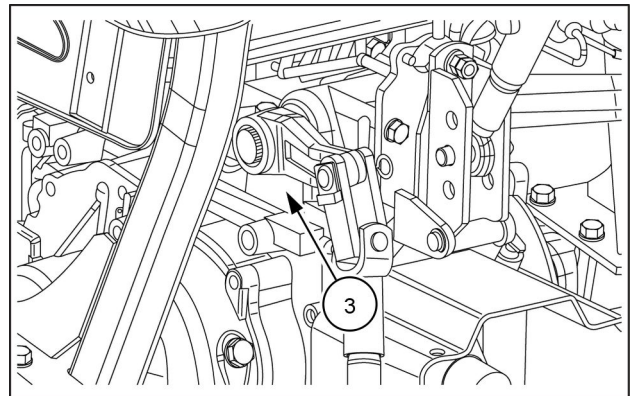
NHIL18CT00031AA 1

The emissions information plate (2) is located on the left-hand side of the engine crankcase.



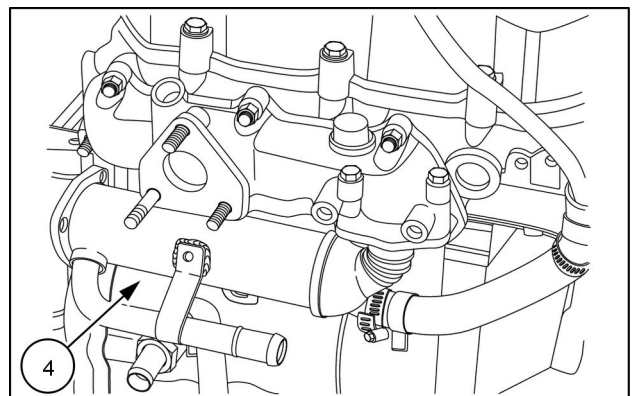
NHIL16CT00707AA 2

The transmission identification numbers (3) are located on the transmission housing, to the left of the Hydraulic Power Lift (HPL). The transmission identification numbers are also located on the PIN plate.



NHIL16CT00383AA 3

The engine identification number is located on the right-hand side of the engine block, below and inboard of the Exhaust Gas Recirculation (EGR) cooler. The engine identification number is also located on the PIN plate.



NHIL16CT00674AA 4

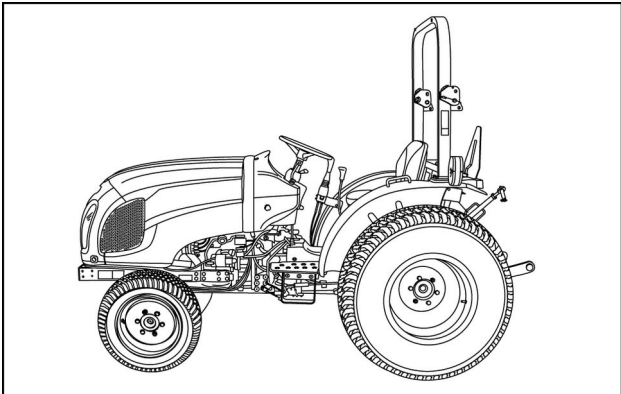
Operator's manual storage

The operator's manual must be stored in a secure place prior to operation and it must be kept available for use by all operators.

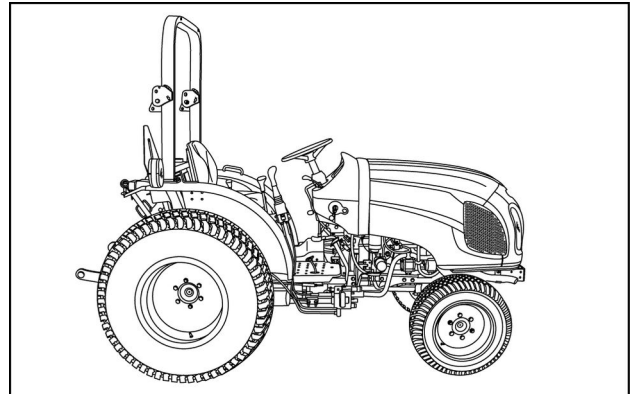
NOTE: *There is not a designated manual storage area on the tractor.*

Machine orientation

NOTE: On this equipment, left-hand and right-hand are determined by standing behind the unit, looking in the direction of travel.

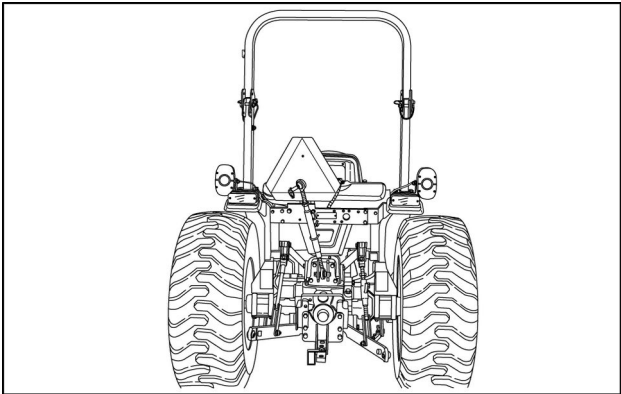


NHIL15CT00344AA 1



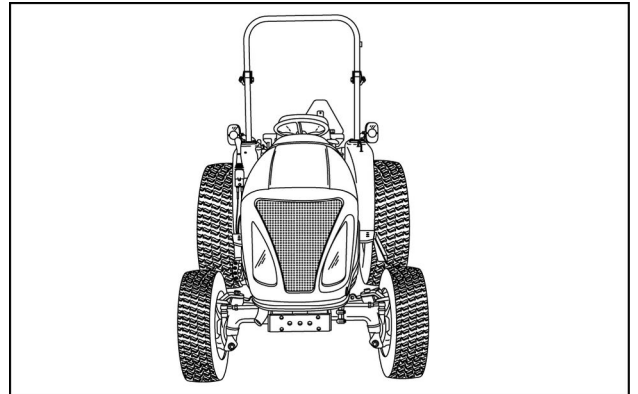
NHIL15CT00346AA 2

Left-hand view



NHIL12CT00671AA 3

Right-hand view



NHIL15CT00345AA 4

Rear view

Front view

Thank you so much for reading.
Please click the “Buy Now!”
button below to download the
complete manual.



After you pay.

You can download the most
perfect and complete manual in
the world immediately.

Our support email:

ebooklibonline@outlook.com