

ORIGINAL INSTRUCTIONS

# OPERATOR'S MANUAL

---

## 160GMS

For Boomer™ 25 Compact  
Mower Deck

**Part number 51567834**  
1<sup>st</sup> edition English  
February 2019



# Contents

---

## 1 GENERAL INFORMATION

Note to the Owner .....	1-1
Intended use.....	1-3
Product Identification Number (PIN).....	1-4
Operator's manual storage on the machine .....	1-5
Machine orientation.....	1-6
Machine components.....	1-7

## 2 SAFETY INFORMATION

Safety rules and signal word definitions .....	2-1
Safety rules.....	2-2
Do not operate tag.....	2-6
Ecology and the environment .....	2-7
Safety signs .....	2-8
Instructional signs .....	2-11

## 3 WORKING OPERATIONS

### General information

Mower deck - Operating .....	3-1
Mower deck - Install .....	3-3
Mower deck - Removal .....	3-6
Cutting height - Adjust.....	3-9
Mower deck - Lock-up.....	3-11
Mower deck levelness - Adjust .....	3-12
Blades - Replace .....	3-15
Blade - Remove .....	3-16
Blade - Sharpen .....	3-17
Blade - Install .....	3-19
Belt - Remove .....	3-20
Belt - Install .....	3-21
Power Take-Off (PTO) shaft - Install.....	3-23
Power Take-Off (PTO) shaft - Remove.....	3-24
Common mowing problems .....	3-25

## 4 MAINTENANCE

### General information

Safety rules.....	4-1
-------------------	-----

### Maintenance planning

Mower deck attachment - Maintenance chart .....	4-3
---	-----

### Every 10 hours or daily

Grease fittings - Lubricate .....	4-4
Gearbox oil level - Check.....	4-5

---

**Initial 50 hours**  
Gearbox oil – Change fluid ..... 4-6

**Every 200 hours**  
Mower deck belt - Replace ..... 4-7

**Every 800 hours**  
Mower deck attachment - Drain fluid ..... 4-7

**Storage**  
Storing the mower deck ..... 4-9

## 5 TROUBLESHOOTING

**Symptom(s)**  
Troubleshooting - Foreword ..... 5-1  
Mower deck attachment - Troubleshooting ..... 5-1

## 6 SPECIFICATIONS

General specifications ..... 6-1

## 7 FORMS AND DECLARATIONS

Delivery report - Dealer copy ..... 7-1  
Delivery report - Owner copy ..... 7-3

---

# 1 - GENERAL INFORMATION

## Note to the Owner

This manual contains information concerning the adjustment and maintenance of your new equipment. You have purchased a dependable machine, but only by proper care and operation can you expect to receive the performance and long service built into this equipment. Please have all operators read this manual carefully and keep it available for ready reference.

Your NEW HOLLAND dealer will instruct you in the general operation of your new equipment. Your dealer's staff of factory-trained service technicians will be glad to answer any questions that may arise regarding the operation of your machine. New Holland Top Service is also available. Go to [www.newholland.com](http://www.newholland.com).

Your NEW HOLLAND dealer carries a complete line of genuine NEW HOLLAND service parts. These parts are manufactured and carefully inspected to insure high quality and accurate fitting of any necessary replacement parts. Be prepared to give your dealer the model and product identification number of your new equipment when ordering parts. Locate these numbers now and record them below. Refer to the 'General Information' section of this manual for the location of the model and product identification numbers of your machine.

### PLEASE RECORD THE FOLLOWING INFORMATION

**Tractor Model**

---

**Product Identification Number (PIN)**

---

**Date Purchased**

---

**Attachment Model**


---

**Product Identification Number (PIN)**

---

**Date Purchased**

---

	<p>This is the safety alert symbol. It is used with and without signal words to alert you to potential personal injury hazards. Obey all safety messages that follow this symbol to avoid possible death or injury.</p>
---	---

### **⚠ WARNING**

**Illustrations in this manual may show protective shielding open or removed to better illustrate a particular feature or adjustment.  
Replace all shields before operating the machine.  
Failure to comply could result in death or serious injury.**

W0012A

## Improvements

CNH INDUSTRIAL AMERICA LLC is continually striving to improve its products. We reserve the right to make improvements or changes when it becomes practical and possible to do so, without incurring any obligation to make changes or additions to the equipment sold previously.

## Intended use

The mower was designed to mount on NEW HOLLAND approved tractors. The mower is designed for customary residential lawn mowing operations and intended as a finishing mower.

DO NOT use this machine for any purpose or in any manner other than as described in the manual, decals, or other product safety information provided with the machine. These materials define the machine's intended use.

Use only approved accessories and attachments designed for your machine. Consult your dealer on changes, additions or modifications that may be required for your machine. Do not make any unauthorized modifications to your machine.

Installation and operation instructions for certain attachments and accessories may not be included in this operator's manual.

Use the publication received with the specific item.

In the case of hydraulic valves, refer to the tractor operator's manual.

**NOTICE:** *Mowers are designed for specific tractor models. Do not install a mower on a different model than specified.*

## WARNING

**IMPROPER OPERATION OF THIS MACHINE CAN CAUSE DEATH OR SERIOUS INJURY.**

**MAKE SURE THAT EVERY OPERATOR:**

**-is instructed in the safe and proper use of this machine.**

**-reads and understands the operator's manual for this machine.**

**-reads and understands ALL safety signs on the machine.**

**Failure to comply could result in death or serious injury.**

W0188A

Read and thoroughly understand this manual before operating this machine. If you are an inexperienced operator, study this manual and receive operating instructions from an experienced operator. Your dealer can assist you in learning machine operation and show you proper operating procedures. Keep this manual readily available, preferably with the machine. If the original manual is damaged, order a new one from your dealer.

## Intended use

### General information

#### **▲ CAUTION**

Improper operation or service of this machine can result in an accident.

1. Before you operate the machine, read the operator's manual for complete instructions and safety information.
  2. Make sure that everyone is clear of the machine and equipment before you start operation.
  3. Keep all riders off the machine and equipment.
- Failure to comply could result in minor or moderate injury.

C0152A

This operator's manual describes the operation and maintenance of the machine. The information in the operator's manual was correct at the time this manual was printed. Please contact your dealer if there is anything you do not understand in the manual.

One operator's manual is supplied with every machine in order to show operator how to operate and maintain the machine properly. Read and use the information to enable you to use the machine in a safe way in combination with short downtime. This machine is designed with simple service in mind, and it can be maintained with normal hand tools.

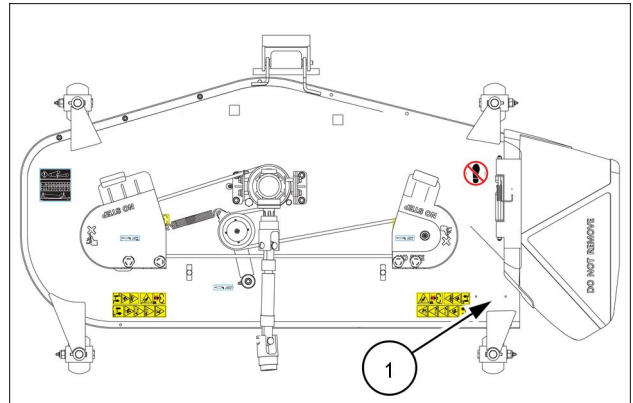
Read and study the text in the operator's manual thoroughly before you begin to use the machine. If you are not an experienced operator, study the operator's manual and ask an experienced operator to explain things to you. Your dealer can help you by teaching you about operation and suitable work methods. Keep this operator's manual readily available, preferably with the tractor. Contact your dealer to obtain a replacement manual, if the original manual is damaged or missing.

**NOTE:** Read through the operator's manual before you start to use the machine.

## Product Identification Number (PIN)

A product identification label is provided for your mower. The numbers on this label are important if your mower should require dealer service or if you need additional information on the equipment. Prior to using the mower for the first time, record the numbers from the identification label in the appropriate spaces provided below.

Product Identification Number (PIN) plate location **(1)**,  
**60 in** mower deck:



NHIL19CT00072FA 1

Product Identification Number (PIN):

<b>CNH</b> INDUSTRIAL		<b>NEW HOLLAND</b> AGRICULTURE										
⊕	<table border="1"> <tr> <td>Model Name</td> <td></td> </tr> <tr> <td>Serial No.</td> <td></td> </tr> <tr> <td>Weight</td> <td></td> </tr> <tr> <td>Nominal Rotation Frequency</td> <td></td> </tr> <tr> <td>Production Date</td> <td></td> </tr> </table>	Model Name		Serial No.		Weight		Nominal Rotation Frequency		Production Date		⊕
Model Name												
Serial No.												
Weight												
Nominal Rotation Frequency												
Production Date												
CNH Industrial America LLC, Racine, WI 53404 USA		CE										

40405504/00

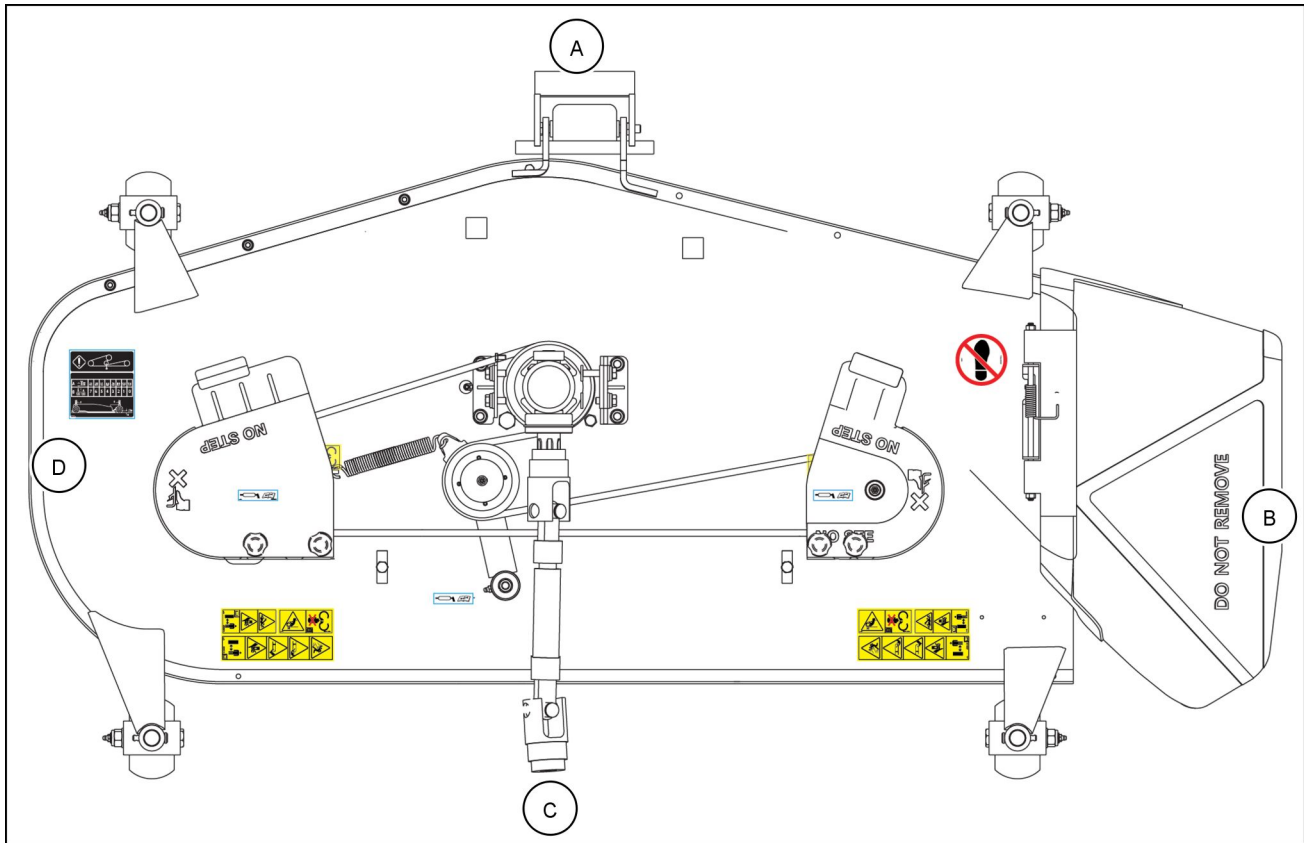
NHIL19CT00086AA 2

## **Operator's manual storage on the machine**

There is no operator's manual storage on the machine.  
Keep the operator's manual in a safe place and have it available for use by all operators.



## Machine orientation



NHIL19CT00072FA 1

**60 in mower deck**

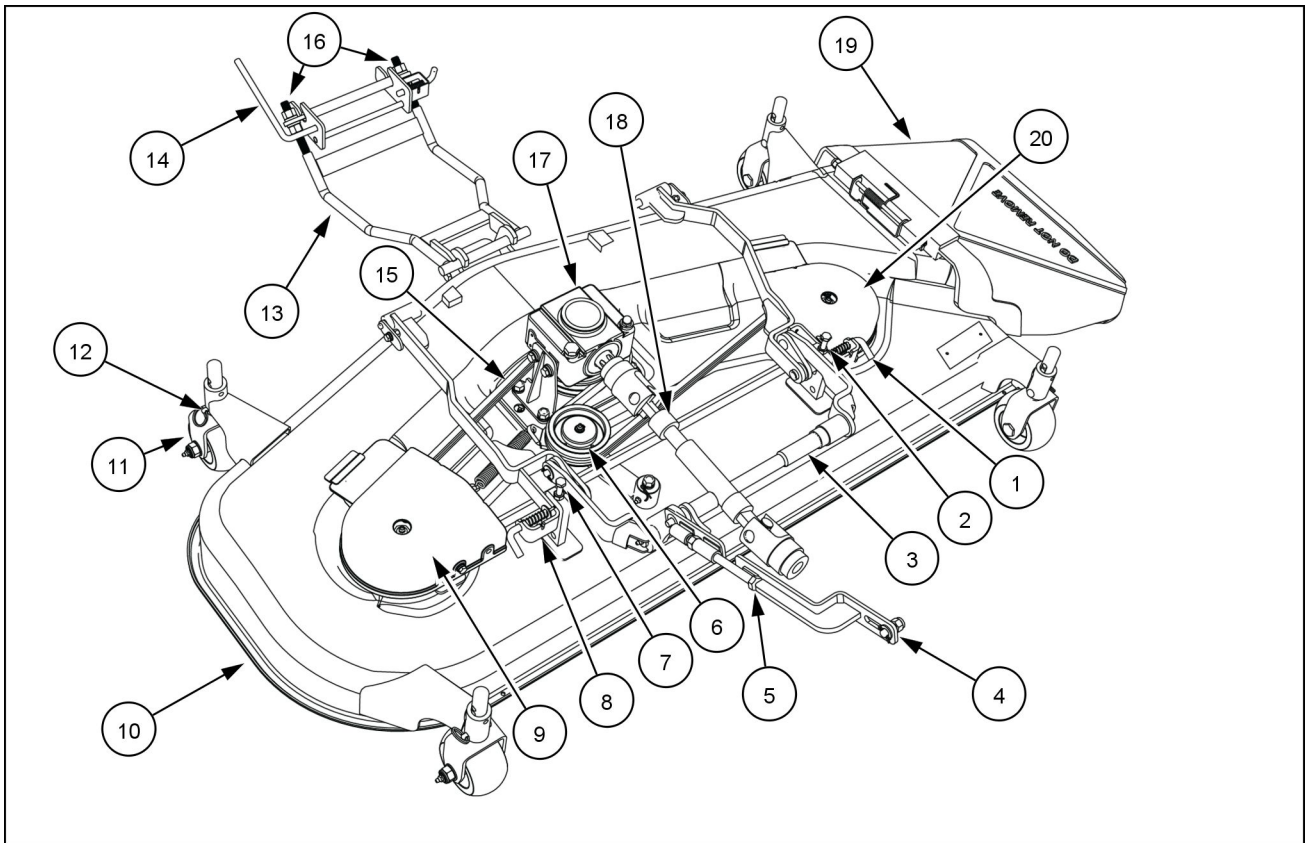
**(A)** Front side

**(B)** Right-hand side

**(C)** Rear side

**(D)** Left-hand side

## Machine components



NHIL17CT01852FA 1

Machine components		
(1) Right-hand draft link	(8) Left-hand draft link	(15) Belt
(2) Right-hand deck adjustment bolt	(9) Left-hand pulley cover	(16) Front hanger adjustment nuts
(3) Lift shaft	(10) Mower deck non discharge side	(17) Gearbox assembly
(4) Lift link	(11) Deck wheel, one of four	(18) Drive shaft assembly
(5) Lift link adjustment nut	(12) Deck wheel adjustment pin and retainer	(19) Discharge chute
(6) Idler pulley	(13) Front hanger	(20) Right-hand pulley cover
(7) Left-hand deck adjustment bolt	(14) Front hanger latch assembly	

Thank you so much for reading.  
Please click the “Buy Now!”  
button below to download the  
complete manual.



After you pay.

You can download the most  
perfect and complete manual in  
the world immediately.

Our support email:

[ebooklibonline@outlook.com](mailto:ebooklibonline@outlook.com)