

# OPERATOR'S MANUAL

---

**T7.150**

**T7.180**

Tractor

**Part number 51635318**

1<sup>st</sup> edition English

May 2019

*Replaces part number 48077838*



# Contents

---

## 1 GENERAL INFORMATION

|   |     |
|---|-----|
| Note to the owner .....                       | 1-1 |
| Product Identification .....                  | 1-3 |
| Engine identification .....                   | 1-4 |
| Component identification - Transmission ..... | 1-4 |
| Cab identification .....                      | 1-5 |
| Universal symbols .....                       | 1-6 |

## 2 SAFETY INFORMATION

|  |      |
|--|------|
| Safety Precautions .....                     | 2-1  |
| Roll Over Protection Structure (ROPS) .....  | 2-2  |
| Safety Decals - Platform models .....        | 2-3  |
| Safety decals - Cab models .....             | 2-10 |
| Noise level .....                            | 2-21 |
| Before operating the machine .....           | 2-22 |
| Driving the vehicle .....                    | 2-22 |
| Operating the machine .....                  | 2-23 |
| Power take off (PTO) operation .....         | 2-24 |
| Servicing safety precautions .....           | 2-25 |
| Operating the external controls .....        | 2-26 |
| Fire or explosion prevention .....           | 2-27 |
| Diesel fuel .....                            | 2-28 |
| Personal safety offered by the machine ..... | 2-29 |
| Intended use statement .....                 | 2-31 |
| Ecology and the environment .....            | 2-33 |

## 3 CONTROLS AND INSTRUMENTS

### Access to operator's platform

|   |     |
|---|-----|
| Introduction .....                      | 3-1 |
| External rear view mirrors .....        | 3-3 |
| Cab .....                               | 3-4 |
| Operator's platform .....               | 3-5 |
| In cab storage (where applicable) ..... | 3-6 |
| Cable and wiring routing .....          | 3-6 |
| Mobile telephone usage .....            | 3-6 |
| Implement monitor installation .....    | 3-7 |

### Operator's seat

|                     |     |
|---------------------|-----|
| Operator seat ..... | 3-8 |
| Shoulder belt ..... | 3-9 |

### Instructional seat

|                                       |      |
|---------------------------------------|------|
| Instructor's seat (when fitted) ..... | 3-10 |
|---------------------------------------|------|

---

## Forward controls

|                                    |      |
|------------------------------------|------|
| Ignition key .....                 | 3-10 |
| Warning lights .....               | 3-11 |
| Left-hand control lever.....       | 3-11 |
| Follow me home lights .....        | 3-12 |
| Right-hand control lever .....     | 3-12 |
| Clutch pedal .....                 | 3-13 |
| Foot throttle pedal .....          | 3-13 |
| Brake pedals - Service brake ..... | 3-13 |
| Steering column - Adjust .....     | 3-14 |

## Left-hand side controls

|                    |      |
|--------------------|------|
| Parking brake..... | 3-15 |
|--------------------|------|

## Right-hand side controls

|  |      |
|--|------|
| Differential lock system.....                        | 3-16 |
| Hand throttle.....                                   | 3-16 |
| Four-wheel drive with electro-hydraulic control..... | 3-16 |
| Control levers - Mechanical transmission .....       | 3-17 |

## Rearward controls

|                            |      |
|----------------------------|------|
| Switches on C-pillar ..... | 3-17 |
|----------------------------|------|

## Overhead controls

|   |      |
|---|------|
| Overhead controls.....                                      | 3-18 |
| Interior lights.....  | 3-18 |
| Heating, Ventilation, Air-Conditioning (HVAC) controls..... | 3-20 |
| Manual temperature control .....                            | 3-22 |

## INSTRUMENT CLUSTER

|   |      |
|---|------|
| Instrument panel.....   | 3-23 |
| Instrument panel.....   | 3-23 |
| Mechanical transmission - Calibrate - Mechanical transmission ..... | 3-25 |
| Accessing stored error codes .....                                  | 3-27 |
| Color monitor (where fitted) .....                                  | 3-28 |
| Pop-up screens on color display .....                               | 3-29 |
| Performance monitor on color display .....                          | 3-34 |
| Display configuration – Implement width .....                       | 3-37 |

## 4 OPERATING INSTRUCTIONS

### Commissioning the unit

|                           |     |
|---------------------------|-----|
| Fueling the machine ..... | 4-1 |
|---------------------------|-----|

### Starting the unit

|                          |     |
|--------------------------|-----|
| Engine - Operating ..... | 4-2 |
| Cold starting aids ..... | 4-4 |

---

|                                 |     |
|---------------------------------|-----|
| Booster battery procedure ..... | 4-5 |
|---------------------------------|-----|

## Stopping the unit

|                           |     |
|---------------------------|-----|
| Stopping the engine ..... | 4-6 |
|---------------------------|-----|

## 5 TRANSPORT OPERATIONS

### Preparing for road transport

|   |     |
|---|-----|
| Carrying the tractor on a transporter ..... | 5-1 |
|---|-----|

### Recovery transport

|                      |     |
|----------------------|-----|
| Machine towing ..... | 5-1 |
|----------------------|-----|

## 6 WORKING OPERATIONS

### General information

|                                |     |
|--------------------------------|-----|
| Differential lock system ..... | 6-1 |
|--------------------------------|-----|

### TRANSMISSION

|   |     |
|---|-----|
| Transmission operation mechanical ..... | 6-2 |
| Ground speed chart .....                | 6-4 |

### REAR POWER TAKE-OFF

|  |      |
|--|------|
| Power Take-Off (PTO) operating precautions ..... | 6-6  |
| Power Take-Off (PTO) connection.....             | 6-6  |
| Power take off (PTO) operation .....             | 6-8  |
| Power take off (PTO) operation Two Speed .....   | 6-12 |
| PTO interchangeable shaft .....                  | 6-13 |
| Power Take-Off (PTO) – (PTO) Brake .....         | 6-14 |

### REAR HITCH

|   |      |
|---|------|
| Hydraulic lift with mechanical control .....  | 6-15 |
| Hydraulic lift with mechanical control .....  | 6-15 |
| Hydraulic systems - Operating .....           | 6-16 |
| Mechanical hydraulic lift - Adjustment .....  | 6-19 |
| Mechanical hydraulic lift - Outer lever ..... | 6-20 |

### HYDRAULIC REMOTE CONTROL VALVES

|  |      |
|--|------|
| Hydraulic remote control valves .....              | 6-21 |
| Rear remote valve configuration .....              | 6-21 |
| Operating continuous flow hydraulic equipment..... | 6-22 |
| Operating single-acting hydraulic cylinders .....  | 6-24 |
| Operating double-acting hydraulic cylinders .....  | 6-25 |
| Remote control valves - Configure Motor kit .....  | 6-26 |
| Hydraulic oil free-flow return.....                | 6-27 |

---

## THREE POINT HITCH

|  |      |
|--|------|
| Attach the implement on the hydraulic lift ..... | 6-28 |
| Adjustments – Lift arm .....                     | 6-30 |
| Quick hitch.....                                 | 6-31 |
| Setups - Third point arm .....                   | 6-33 |

## DRAWBARS AND TOWING ATTACHMENTS

|  |      |
|--|------|
| Maximum permitted loads on drawbar ..... | 6-35 |
| Tractor drawbar.....                     | 6-37 |

## PNEUMATIC TRAILER BRAKES

|  |      |
|--|------|
| Pneumatic trailer brake.....                       | 6-39 |
| Auxiliary air supply connector (where fitted)..... | 6-42 |

## WHEEL TRACK ADJUSTMENT

|   |      |
|---|------|
| Front wheel track adjustment.....                               | 6-43 |
| Front wheel alignment.....                                      | 6-46 |
| Steering stops .....  | 6-47 |
| Front axle oscillation stops .....                              | 6-49 |
| Adjustment of the dynamic front mudguards.....                  | 6-50 |
| Front axle with extension (Cane cultivator) - If equipped ..... | 6-53 |
| Rear axle flange type (where fitted) .....                      | 6-54 |
| Rear axle bar type (where fitted) .....                         | 6-58 |
| Dual rear wheels (where fitted).....                            | 6-62 |

## BALLASTING AND TIRES

|  |      |
|--|------|
| Tire care – Wheels .....                   | 6-63 |
| Ballasting and tires .....                 | 6-65 |
| Tires - Compatibility table .....          | 6-67 |
| Iron weights (where fitted).....           | 6-69 |
| Liquid ballast .....                       | 6-71 |
| Tires - Inflation .....                    | 6-75 |
| Tire pressures and permissible loads ..... | 6-76 |

## AUXILIARY POWER CONNECTIONS

|                                  |      |
|----------------------------------|------|
| Diagnose socket.....             | 6-78 |
| Auxiliary electrical outlet..... | 6-78 |
| Internal power connectors.....   | 6-79 |
| External power connectors .....  | 6-81 |

## 7 MAINTENANCE

### General information

|                                       |     |
|---------------------------------------|-----|
| Introduction .....                    | 7-1 |
| Fuel handling precautions .....       | 7-2 |
| Diesel fuel .....                     | 7-4 |
| Specifications - Biodiesel fuel ..... | 7-5 |

---

|  |     |
|--|-----|
| Organic Acid Technology (OAT) coolant..... | 7-7 |
| Protective devices .....                   | 7-8 |

## Maintenance planning

|                        |      |
|------------------------|------|
| Maintenance chart..... | 7-10 |
|------------------------|------|

## WHEN THE WARNING LAMP LIGHTS

|                                  |      |
|----------------------------------|------|
| Engine air filter, primary ..... | 7-12 |
| Brake fluid level.....           | 7-14 |
| Clutch fluid level .....         | 7-15 |

## EVERY 10 HOURS OR DAILY SERVICE

|   |      |
|---|------|
| Engine coolant filter .....                   | 7-16 |
| Engine oil level .....                        | 7-17 |
| Windshield wiper fluid reservoir .....        | 7-18 |
| Pneumatic brake reservoir (when fitted) ..... | 7-19 |

## First 10 hours

|                                    |      |
|------------------------------------|------|
| Wheel nuts tightening torque ..... | 7-20 |
|------------------------------------|------|

## FIRST 50 HOURS

|                        |      |
|------------------------|------|
| Initial 50 hours ..... | 7-21 |
|------------------------|------|

## EVERY 50 HOURS

|  |      |
|--|------|
| Cab air filters .....                                | 7-22 |
| Cab recirculation air filter .....                   | 7-23 |
| Cleaning the radiators .....                         | 7-24 |
| Lubrication points.....                              | 7-25 |
| Check the tire pressures and the tire condition..... | 7-27 |
| Battery maintenance .....                            | 7-27 |

## EVERY 300 HOURS

|   |      |
|---|------|
| Engine oil and filter .....   | 7-28 |
| Engine belt .....   | 7-29 |
| Pneumatic brake compressor belt (when fitted) .....                     | 7-29 |
| A/C compressor belt.....  | 7-30 |
| Pre-fuel filter .....   | 7-31 |
| Charge pump filter - Cleaning .....                                     | 7-32 |
| Park brake .....  | 7-33 |
| Rear axle oil level.....  | 7-33 |
| Front axle (4WD) oil level.....   | 7-34 |
| Front axle extensions oil level – Cane harvester (when available) ..... | 7-34 |
| Cab and safety frame mounting hardware torque - Check .....             | 7-35 |
| Cab and safety frame mounting hardware torque - Check .....             | 7-36 |
| Cab air filters – Activated charcoal filter – (when equipped) .....     | 7-37 |
| Front axle hub oil (4WD) - oil level .....                              | 7-38 |

---

## EVERY 600 HOURS

|  |      |
|--|------|
| Engine air filter - Outer element .....  | 7-39 |
| Engine air filter - Inner element.....   | 7-40 |
| Check the air intake connections.....    | 7-41 |
| Fuel injection system .....              | 7-42 |
| Cab air filters .....                    | 7-43 |
| Cab air recirculation filter .....       | 7-44 |
| Grease the rear axle shaft bearing ..... | 7-45 |
| Wheel nuts tightening torque .....       | 7-45 |

## EVERY 900 HOURS

|   |      |
|---|------|
| Change the charge pump oil filter ..... | 7-47 |
|---|------|

## EVERY 1200 HOURS OR ANNUALLY

|  |      |
|--|------|
| Pneumatic trailer brake – Replacement of the filter .....                | 7-48 |
| Pneumatic brake system dryer – Changing the filter (when equipped) ..... | 7-49 |
| Change hydraulic system oil .....  | 7-50 |
| Change front axle oil .....  | 7-51 |
| Front axle extensions oil change – Cane harvester (when equipped) .....  | 7-51 |
| Hydraulic oil filter .....   | 7-52 |
| Autopilot valve filter.....  | 7-52 |
| Change the engine breather filter .....                                  | 7-53 |
| Engine valve clearance.....  | 7-54 |

## EVERY 4000 HOURS OR 4 YEARS

|                                      |      |
|--------------------------------------|------|
| Change the engine coolant fluid..... | 7-55 |
|--------------------------------------|------|

## GENERAL MAINTENANCE

|   |      |
|---|------|
| Air conditioning filter drier .....                                     | 7-58 |
| Air conditioning - Charging .....                                       | 7-59 |
| Cleaning the tractor.....   | 7-59 |
| Bleeding the fuel injection system .....                                | 7-61 |
| Service brakes.....   | 7-62 |
| Adjust the cab suspension (where fitted).....                           | 7-63 |
| Headlight and worklamp adjustment .....                                 | 7-64 |
| Replacing bulbs .....   | 7-65 |
| Fuses and relays - Models without cab and mechanical transmission ..... | 7-69 |
| Fuses and relays - Models with cab and mechanical transmission .....    | 7-73 |
| Battery replacement .....   | 7-77 |
| Engine idle speed – Models with mechanical transmission .....           | 7-78 |
| Remote couplers oil recovery bottle .....                               | 7-78 |

## Storage

|   |      |
|---|------|
| Storing the machine .....               | 7-79 |
| Preparation for use after storage ..... | 7-80 |

---

8 TROUBLESHOOTING

Alarm(s)

|   |     |
|---|-----|
| Fault codes and symbols .....           | 8-1 |
| Fault codes - Performance monitor ..... | 8-2 |

Symptom(s)

|   |      |
|---|------|
| Engine .....  | 8-4  |
| Drive – Models with mechanical transmission .....                   | 8-6  |
| Hydraulics .....  | 8-7  |
| Rear hydraulic lift with mechanical control – Mechanical lift ..... | 8-8  |
| Brakes .....  | 8-9  |
| Cab .....   | 8-9  |
| Electrical .....  | 8-10 |

9 SPECIFICATIONS

|   |     |
|---|-----|
| Overall dimensions .....                          | 9-1 |
| Fluids and lubricants .....                       | 9-4 |
| Engine .....                                      | 9-5 |
| Transmission .....                                | 9-6 |
| Hydraulic system .....                            | 9-6 |
| Rear hydraulic lift with mechanical control ..... | 9-7 |
| Brakes .....                                      | 9-7 |
| Driving .....                                     | 9-8 |
| Power Take-Off (PTO) .....                        | 9-8 |
| Electrical system .....                           | 9-8 |

10 ACCESSORIES

|                               |      |
|-------------------------------|------|
| Pneumatic trailer brake ..... | 10-1 |
| Rotary beacon (option) .....  | 10-3 |

# 1 - GENERAL INFORMATION

## Note to the owner

### GENERAL INFORMATION

This Manual has been prepared to assist you in the correct procedure for running-in, driving and operating and for the maintenance of your new machine. Read this manual carefully. Your machine is designed to be used in normal and customary agricultural applications.

If you require technical support for your machine at any time, do not hesitate in contacting your NEW HOLLAND dealer. They have company trained personnel, genuine parts and the necessary equipment to carry out all your service requirements.

The specification are provided for your information and guidance. For further information concerning your tractor and equipment, consult your NEW HOLLAND dealer.

All data given in this book is subject to production variations. Dimensions and weights are approximate. The illustrations do not necessarily show tractors in standard condition or imply that these features are available in all countries. For exact information about any particular tractor, please consult your NEW HOLLAND dealer.

Your tractor has been designed and built to give maximum performance, economy and ease of operation under a wide variety of operating conditions. Prior to delivery, the tractor was carefully inspected, both at the factory and by your NEW HOLLAND dealer to ensure that it reaches you in optimum condition. To maintain this condition and ensure trouble-free operation, it is important that the routine services, as specified in the Maintenance Graphic of this Manual, are carried out at the recommended intervals.

### OPERATORS MANUAL STORAGE

The Operator's Manual supplied with your tractor is an important source of information and should be stored safely.

The manual is written specifically for your tractor so it is important that you make a note of the print number and issue date which can be found on the cover. In the event the manual is lost or damaged it can be replaced with the correct version.

A storage pocket for the Operator's Manual can be found on the rear of the seat. The manual should be kept in this pocket at all times when not in use.

### ABOUT THIS MANUAL

This manual gives information for use of your machine, as intended and under the conditions foreseen by the manufacturer during normal operation and routine service and maintenance.

Read and understand; keep it in good condition and always safely store it in the provided pocket in the back of your seat for later easy use.

This manual does not contain all the information related to periodical service, converting and repairs to be carried out by NEW HOLLAND professional service personnel.

The Table of Contents page(s) are provided to have an overview of main manual's topics. A detailed alphabetic index is available at the end of this manual for locating specific items.

### Normal operation

- Normal operation means the use of the tractor for the purpose intended by the manufacturer by an operator familiar with the tractor and the mounted or towed equipment and complying with the information for operation and safe practices, as specified by the manufacturer in this manual and by the decals on the tractor and the equipment.
- Normal operation includes the preparation and storage of the tractor, swinging components into work position and vice versa, adding or removing ballast and picking up and setting off attachments.
- Normal operation includes the adjustment and setting of the tractor and equipment, for the specific condition of the field and/ or the crop.

### Routine service

- Routine service and maintenance means activities that must be done daily by an operator familiar with the tractor characteristics and complying with the information for routine service and safe practices, as specified by the manufacturer in this manual and by decals on the tractor, in order to maintain its proper function. Routine service includes activities such as fuelling, cleaning, washing, topping up fluid levels, greasing, and replacing consumable articles such as lamp bulbs.

### Converting, periodical service and repair

- Periodical service means activities that must be done at defined intervals by trained personnel familiar with the tractor characteristics and which are complying with the information for periodical service and safe practices, as partly specified by the manufacturer in this manual and in other Company literature, in order to maintain the expected life time of the tractor.
- Converting means activities that must be done by professional service personnel familiar with the tractor characteristics and complying with the information for converting, as partly specified by the manufacturer in

this manual, in assembly instructions or in other Company literature, in order to fit the tractor to a specific configuration.

- Repair means activities that must be done by professional service personnel only who are familiar with the tractor characteristics and complying with the information for repair, as specified by the manufacturer in the NEW HOLLAND dealer's Service Manual, in order to restore the proper function of the tractor after a failure or reduction in performance.

### CLEANING THE TRACTOR

Your tractor is a state-of-the-art machine with sophisticated, electronic controls. This should be taken into consideration when cleaning the tractor, particularly if using a high pressure washer. Even though every precaution has been taken to preserve electronic components and connections, the pressure generated by some of these machines is such that complete protection against water ingress cannot be guaranteed.

When using a high pressure washer, do not stand too close to the tractor and avoid directing the jet at electronic components, electrical connections, breathers, seals, filler caps, etc. Never direct a cold water jet at a hot engine or exhaust.

Failure to comply with these rules will render the warranty null and void.

### Security

The pages in Section 2 list the precautions to be observed to ensure your safety and the safety of others. Read the safety precautions and follow the advice offered before operating the tractor.

### SERVICE PARTS

It should be pointed out that genuine parts have been examined and approved by the Company. The installation

and/or usage of 'non-genuine' products could have negative effects upon the design characteristics of your tractor and thereby affect its safety. The Company is not liable for any damage caused by the use of 'non-genuine' parts and accessories. Only genuine replacement parts should be used. The use of non-genuine parts may invalidate legal approvals associated with this product.

It is prohibited to carry out any modifications to the tractor unless specifically authorised, in writing, by the After Sales Service department of the Company.

### WARRANTY

Your tractor is warranted according to legal rights in your country and the contractual agreement with the selling dealer. No warranty shall, however, apply if the tractor has not been used, adjusted and maintained according to the instructions given in the Operator's Manual.

Check the mandatory services for your machine in the Warranty Booklet. The Warranty Booklet is issued with the machine.

### USE OF BIODIESEL FUELS

**NOTICE:** Before using Biodiesel fuels in your tractor, refer to the information on page 7-4 regarding the storage and use of Bio diesel fuels.

### Tampering with the engine or fuel system

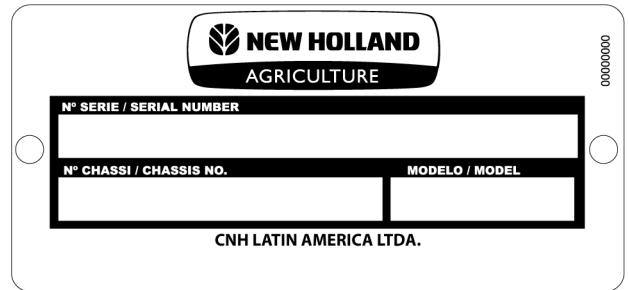
**ATTENTION:** Your machine's engine and the fuel system were designed and configured to meet the emissions standards required by the laws in your country or region. Dealers, customers, operators, and users are strictly prohibited from tampering with the machine's factory settings. Failure to comply with this rule invalidates the machine's warranty and could result in government fines, legal action, and possible confiscation of the machine until rework to original condition is completed. Engine maintenance and repairs must be done by an authorized technician only.

## Product Identification

Your machine and its main components are identified by codes. These codes facilitate identification of your machine. You must give them to your NEW HOLLAND dealer when requesting replacement parts or servicing. The following information indicates where the identification codes are stamped.

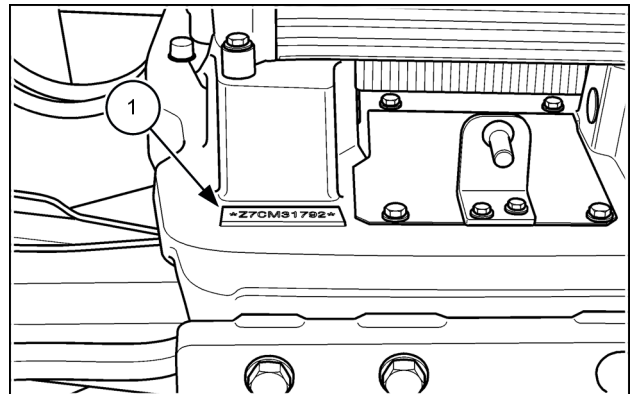
### Machine identification plate

The plaque with the product identification number (PIN) is located on the inside of the radiator bracket on the left-hand side.



CUIL15TR00484AA 1

The PIN is also stamped on the machine's front axle support bracket.

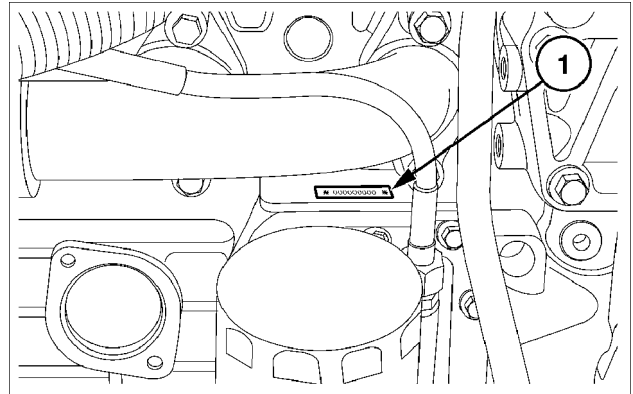


BRAG12TRLUE1212 2

## Engine identification

The engine serial number and date of manufacture are stamped on the right- hand side of engine block **(1)** below the manifold. Record the number below.

Engine Serial No. \_\_\_\_\_

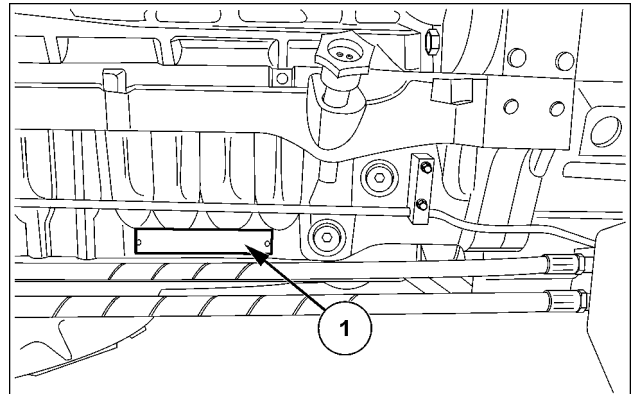


BRJ4859B 1

**NOTE:** The engine serial number is repeated on the information plate located on the left side of the engine oil pan.

Further information relating to engine adjustments and emission level compliance are also shown on the engine information plate.

**NOTE:** The details displayed on the engine information plate may change depending on the country in which the tractor is sold.



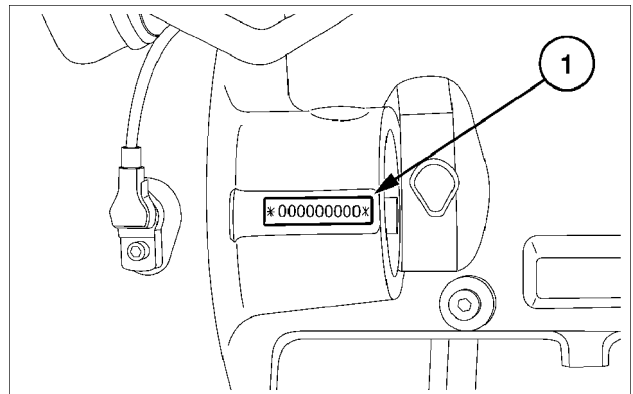
SS10K020 2

## Component identification - Transmission

The serial number plate **(1)** is located on the right- hand side of the transmission casing behind the battery carrier.

This number is repeated on the vehicle identification plate. Record the information below for quick reference.

Driveline Serial Number. \_\_\_\_\_



BRJ4857B 1

## Cab identification

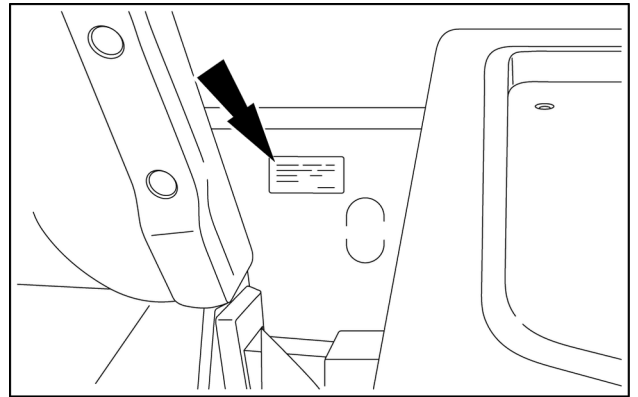
The Rollover Protective Structure (ROPS) is identified with a plate. The following information is engraved on this plate:

- the machine model
- the maximum weight of the machine
- the plate code
- the Product Identification Number (PIN) of the machine
- the ROPS homologation standard

| ESTRUTURA DE PROTEÇÃO NO CAPOTAMENTO<br>ROLL-OVER PROTECTIVE STRUCTURE<br>MARCO DE SEGURIDAD |  |
|--|--|
| MODELOS ATENDIDOS:<br>COVERED MODELS:<br>MODELOS ATENDIDOS:                                  | MASSA MAX.:<br>MAX.MASS:<br>PESO MAX.:<br>P/N: |
| N° SERIE:<br>SERIAL:   |  |
| NORMA:<br>STANDARD:<br>NORMA:  |  |

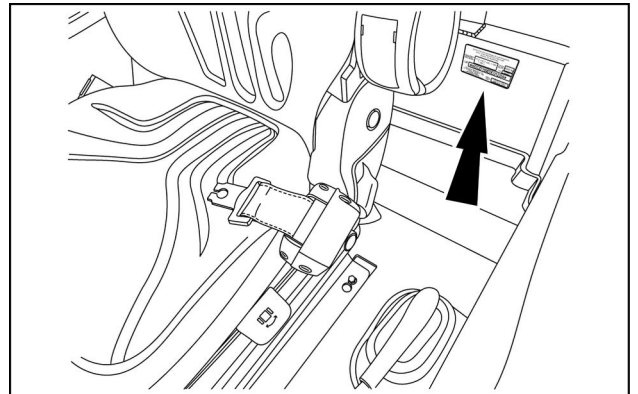
CUIL16TR01408AA 1

Location for attaching the plate on models with a cab.



CUIL13TR00414AA 2










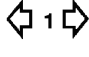
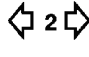












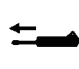







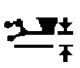


Location for attaching the plate on models without a cab.



CUIL13TR00482AA 3

## Universal symbols

As a guide to the operation of the machine, various universal symbols have been utilized on the instruments, controls, switches, and fuse box. The symbols are shown below with an indication of their meaning.

|   |                            |   |                              |   |   |   |  |
|---|----------------------------|---|------------------------------|---|---|---|--|
|    | Heater plug for cold start |    | Turning signal               |    | Power Take-Off (PTO)                        |    | Reaction control                           |
|    | Alternator charging        | KAM   | Activated memory             | N   | Transmission in neutral                     |    | Accessories socket                         |
|    | Fuel Level                 |    | Turn signals                 |    | Creeper selection                           |    | Implement socket                           |
|    | Automatic fuel shut-off    |    | Turn signals - one trailer   |    | Low speed selection                         |    | % Percentage slip                          |
|    | Engine speed (rpm x 100)   |    | Turn signals - two trailers  |    | High speed selection                        |    | Raising of the hydraulic lift              |
|    | Hour meter                 |    | Wind shield washer           |    | Road speed                                  |    | Rear hitch lower                           |
|    | Engine Oil Pressure        |    | Windscreen wash wipe         |    | Differential Lock                           |    | Hydraulic lift height threshold            |
|   | Engine Coolant Temperature |   | Heating temperature control  |   | Rear axle oil temperature                   |   | Hydraulic lift disabled                    |
|  | Coolant Level              |  | Cab recirculation fan        |  | Trans Oil Pressure                          |  | Transmission filters and hydraulic filters |
|  | Machine lights             |  | Air conditioner              |  | Auxiliary Front Wheel Drive (AFWD) operated |  | Remote control valve extension             |
|  | Main beam head             |  | Air Filter Restriction       |  | Warning!                                    |  | Remote control valve command retraction    |
|  | Dip Beam                   |  | Parking brake                |  | Danger warning lights                       |  | Remote control valve flotation             |
|  | Work lamps                 |  | Brake fluid level            |  | Variable control                            |  | Malfunction! See Operator's                |
|  | Stop Lamp                  |  | Trailer brake                |  | Pressurized! Open carefully                 |  | Malfunction! (alternative symbol)          |
|  | Horn                       |  | Warning! Corrosive substance |  | Position control                            |  | Brake fluid level                          |
|  | Trans Oil Pressure         |   |                              |   |   |   |  |

## 2 - SAFETY INFORMATION

### Safety Precautions


#### Personal safety





This is the safety alert symbol. It is used to alert you to potential personal injury hazards. Obey all safety messages that follow this symbol to avoid possible death or injury.

Throughout this manual you will find the signal words DANGER, WARNING, and CAUTION followed by special instructions. These precautions are intended for the personal safety of you and those working with you.

Read and understand all the safety messages in this manual before you operate or service the machine.

 DANGER indicates a hazardous situation that, if not avoided, will result in death or serious injury.

 WARNING indicates a hazardous situation that, if not avoided, could result in death or serious injury.

 CAUTION indicates a hazardous situation that, if not avoided, could result in minor or moderate injury.

**FAILURE TO FOLLOW DANGER, WARNING, AND CAUTION MESSAGES COULD RESULT IN DEATH OR SERIOUS INJURY.**

#### Machine safety

**NOTICE:** Notice indicates a situation that, if not avoided, could result in machine or property damage.

Throughout this manual you will find the signal word Notice followed by special instructions to prevent machine or property damage. The word Notice is used to address practices not related to personal safety.

#### Information

**NOTE:** Note indicates additional information that clarifies steps, procedures, or other information in this manual.

Throughout this manual you will find the word Note followed by additional information about a step, procedure, or other information in the manual. The word Note is not intended to address personal safety or property damage.

Thank you so much for reading.  
Please click the “Buy Now!”  
button below to download the  
complete manual.



After you pay.

You can download the most  
perfect and complete manual in  
the world immediately.

Our support email:

[ebooklibonline@outlook.com](mailto:ebooklibonline@outlook.com)