

S Series Tractor

Operators Manual

5651

Reprinted





This symbol means ATTENTION! BECOME ALERT! YOUR SAFETY IS INVOLVED. The message that follows the symbol contains important information about your safety. Carefully read the message. Make sure you fully understand the causes of possible injury or death.

SB001

IF THIS MACHINE IS USED BY AN EMPLOYEE, IS LOANED, OR IS RENTED, MAKE SURE THAT THE OPERATOR UNDERSTANDS THE TWO INSTRUCTIONS BELOW.

BEFORE THE OPERATOR STARTS THE ENGINE:

1. GIVE INSTRUCTIONS TO THE OPERATOR ON SAFE AND CORRECT USE OF THE MACHINE.
2. MAKE SURE THE OPERATOR READS AND UNDERSTANDS THE OPERATOR'S MANUAL FOR THIS MACHINE.



WARNING

IMPROPER OPERATION OF THIS MACHINE CAN CAUSE INJURY OR DEATH.

BEFORE STARTING THE ENGINE, DO THE FOLLOWING:

1. READ THE OPERATOR'S MANUAL.
2. READ ALL SAFETY DECALS ON THE MACHINE.
3. CLEAR THE AREA OF OTHER PERSONS.

LEARN AND PRACTICE SAFE USE OF MACHINE CONTROLS IN A SAFE, CLEAR AREA BEFORE YOU OPERATE THIS MACHINE ON A JOB SITE.

It is your responsibility to observe pertinent laws and regulations and to follow manufacturer's instructions on machine operation and maintenance.

See your Authorized Case dealer for additional operator's manuals, parts catalogs, and service manuals.

TO PURCHASERS OF CASE TRACTORS

Congratulations on your purchase of a Case Tractor and welcome to the ever-increasing number of satisfied Case Owners.

The dependability and economical performance of your new Case Tractor will prove that you were wise in making this choice.

The organization back of your tractor has been building quality equipment for more than a century. Your Case Tractor was built in one of the largest and best equipped plants in the world. In this factory quality materials, precision machinery, high grade workmanship, thorough inspection, and complete testing equipment are combined to give you the best in performance and economical operation.

The care which you give your tractor will have a great deal to do with the service and satisfaction you get from it. By observing the precautions and suggestions in this manual, your Case Tractor will serve you well for many years. Make this manual your guide. Should you need information not covered here, or should your tractor require special servicing, contact your Case Dealer. He has trained men who are kept informed on the best methods of servicing CASE Industrial Equipment in the field or in his shop.

When it becomes necessary, after long use, to replace certain parts on your tractor, be sure to use only genuine Case Parts, insuring proper fit and continued good service. These may be obtained from your Case Dealer. It is always helpful to provide him with the Model and Serial Number of your tractor in addition to a description and part number, if available, of the parts required.

TABLE OF CONTENTS

	Page
SERIAL NUMBER.....	6
GENERAL SPECIFICATIONS.....	7
LUBRICATION.....	15
Recommended Engine, Transmission and Hydraulic Lubricants.....	17
Lubrication Points.....	18
Engine Lubrication.....	21
Transmission Lubrication.....	23
Hydraulic Control.....	24
Live Power Take-off.....	26
OPERATING INSTRUCTIONS.....	27
Important Pre-starting Information.....	29
Starting Instructions.....	31
Rear Wheel Traction.....	34
Drawbar.....	36
Steering the Tractor.....	37
Hydraulic Control Unit.....	38
Eagle Hitch.....	42
Live Power Take-off.....	49
Belt Pulley Work.....	51
Wheel Spacing.....	52
Fuels and Fuel Storage.....	54
Low Cost Fuel Tractors.....	56
Periodic Checks During Operation.....	59
MAINTENANCE.....	61
Lubrication.....	63
Cooling System.....	63
Air Cleaner.....	69
Fuel Strainer.....	70
Carburetor.....	70
Governor and Engine Speed.....	72
Valve Clearance.....	73
Oil Pump.....	74
Crankcase Breather.....	75
Transmission Breather.....	76
Spark Plugs.....	76
Magneto.....	77
Starting and Lighting Equipment.....	81
Traction Clutch Adjustment.....	84
Belt Pulley Brake Adjustment.....	85
Differential Brake Adjustment.....	86
Power Take-off Clutch Adjustment.....	86
Repacking and Adjusting Front Wheel Bearings.....	88
Adjusting the Steering Mechanism.....	89
Tractor Storage.....	91
SERVICE SUGGESTIONS.....	93
INDEX.....	101

USE OF EQUIPMENT OTHER THAN CASE WITH EAGLE HITCH

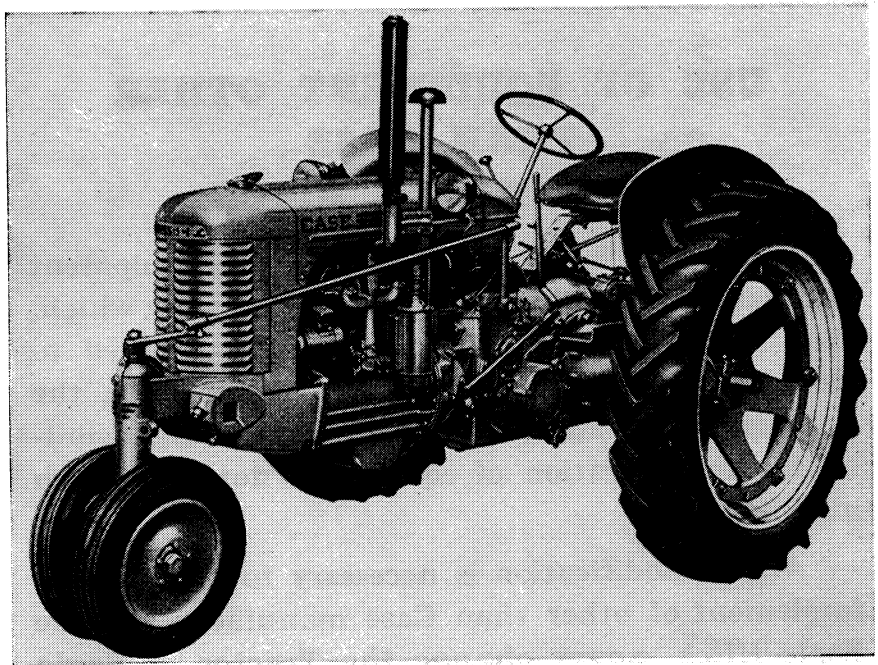
There may be varieties and types of equipment not manufactured by the J. I. Case Company which, with little or no modification, can be applied to Case Eagle Hitch Tractors, although naturally, the J. I. Case Company cannot assume any responsibility for the operation of equipment not of its own manufacture.

When modification is necessary to adapt some implement of other than Case manufacture to the Eagle Hitch, **never change the Tractor or Eagle Hitch.** Case Mounted Implements are designed to operate most efficiently with the Eagle Hitch as it leaves our factory.

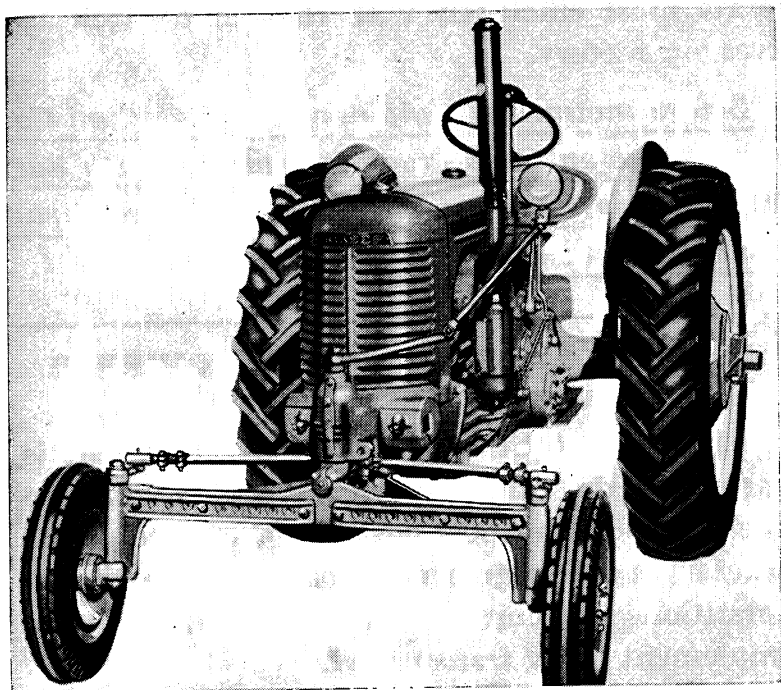
Before mounting equipment of other than Case manufacture on Case Tractors equipped with Eagle Hitch, the matter of safe clearance, and of weight and balance must be taken into consideration.

OPERATION OF TRACTORS EQUIPPED WITH EAGLE HITCH

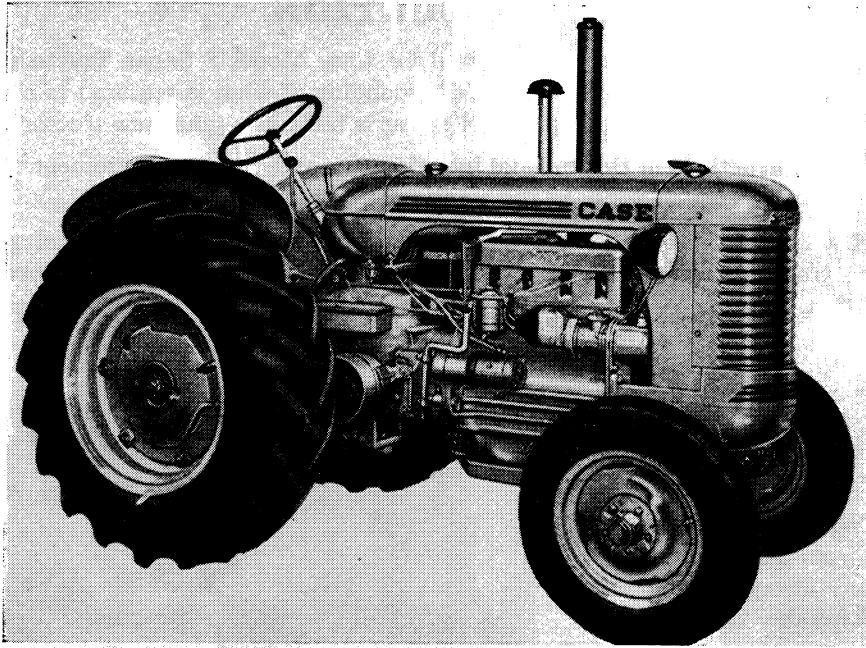
As the weight of a mounted implement is carried by the tractor when the implement is in the raised or transport position, the speed of the tractor must be regulated according to the ground conditions encountered and the weight of the implement being transported.



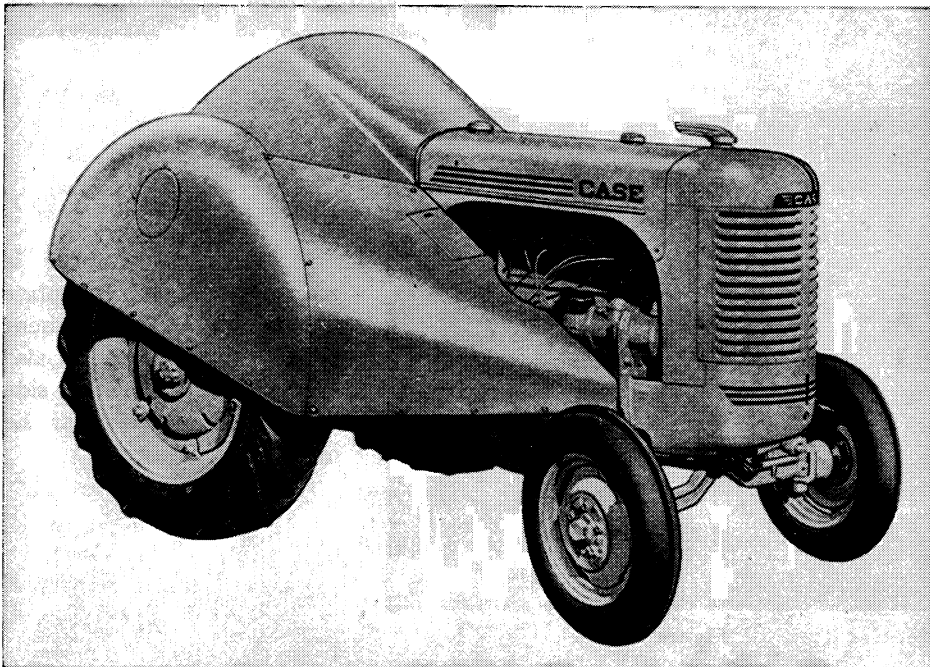
Model SC General Purpose Tractor



**Model SC General Purpose Tractor
(With Adjustable Front Axle)**



Model S Tractor



Model SO Orchard-Grove Tractor

INTRODUCTION

This Operator's Instruction Manual for Case Model S Series Tractors has been furnished to give you a better understanding of what is required to obtain the maximum performance and long life that is built into your new tractor.

The instructions in this manual include extra and optional equipment. Use the instructions which apply to the equipment on your tractor.

The terms "right hand" and "left hand" whenever used in this manual apply to the tractor when facing in the direction the tractor will move in forward operation.

SERIAL NUMBER

When ordering parts from your Authorized Case Dealer, always specify the serial number and model of your tractor.

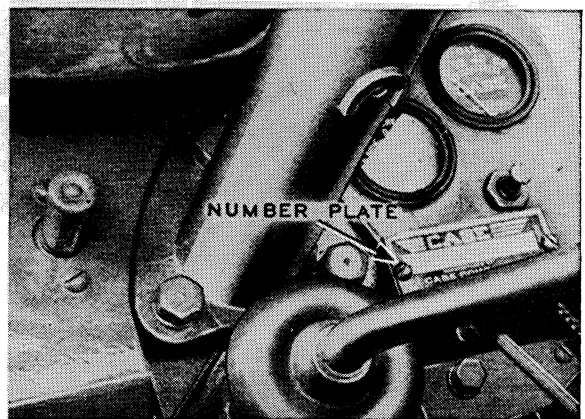


Figure 1.

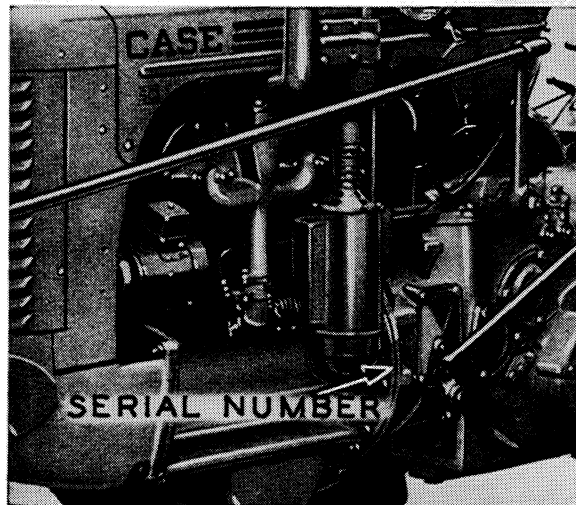


Figure 2.

The serial number is stamped on the number-plate located on the instrument panel, Figure 1, and is also stamped on the left rear side of the engine block near the air cleaner, Figure 2.

Model..... *Serial No.*.....



Our support email:

ebooklibonline@outlook.com