

400 Diesel Tractor

Operators Manual

5688

Reprinted

CASE III



This symbol means ATTENTION! BECOME ALERT! YOUR SAFETY IS INVOLVED. The message that follows the symbol contains important information about your safety. Carefully read the message. Make sure you fully understand the causes of possible injury or death.

SB001

IF THIS MACHINE IS USED BY AN EMPLOYEE, IS LOANED, OR IS RENTED, MAKE SURE THAT THE OPERATOR UNDERSTANDS THE TWO INSTRUCTIONS BELOW.

BEFORE THE OPERATOR STARTS THE ENGINE:

1. GIVE INSTRUCTIONS TO THE OPERATOR ON SAFE AND CORRECT USE OF THE MACHINE.
2. MAKE SURE THE OPERATOR READS AND UNDERSTANDS THE OPERATOR'S MANUAL FOR THIS MACHINE.



IMPROPER OPERATION OF THIS MACHINE CAN CAUSE INJURY OR DEATH.

BEFORE STARTING THE ENGINE, DO THE FOLLOWING:

1. READ THE OPERATOR'S MANUAL.
2. READ ALL SAFETY DECALS ON THE MACHINE.
3. CLEAR THE AREA OF OTHER PERSONS.

LEARN AND PRACTICE SAFE USE OF MACHINE CONTROLS IN A SAFE, CLEAR AREA BEFORE YOU OPERATE THIS MACHINE ON A JOB SITE.

It is your responsibility to observe pertinent laws and regulations and to follow manufacturer's instructions on machine operation and maintenance.

See your Authorized Case dealer for additional operator's manuals, parts catalogs, and service manuals.

AFTER DELIVERY CHECKUP (Diesel)

(Owner's Name)	(Date Checkup Performed)
(Owner's Address)	
(Dealership)	(Town)
Tractor has been operated.....hours	
(Tractor Model and Serial Number)	

- | | |
|--|--|
| <input type="checkbox"/> Check traction clutch.
<input type="checkbox"/> Check PTO clutch.
<input type="checkbox"/> Check brakes.
<input type="checkbox"/> Operate hydraulic system and check oil level in rockshaft housing.
<input type="checkbox"/> Check tire pressure.
<input type="checkbox"/> Tighten cylinder heads and adjust tappets.
<input type="checkbox"/> Check fuel injection pump timing.
<input type="checkbox"/> Fuel filtering system.
<input type="checkbox"/> Check no load full governed engine speed.
<input type="checkbox"/> Tighten all bolts. | <input type="checkbox"/> Cooling system.
<input type="checkbox"/> Crankcase oil (Change oil and filter if necessary).
<input type="checkbox"/> Oil Level in transmission, hydraulic system, and steering gear.
<input type="checkbox"/> Lubricate all pressure fittings and oil cups.
<input type="checkbox"/> Check air cleaner.
<input type="checkbox"/> Check steering, bearing adjustment and front wheel toe-in.
<input type="checkbox"/> Batteries, starter, generator and lights.
<input type="checkbox"/> Check operation of all instruments. |
|--|--|

DEALER: Question purchaser carefully concerning his experience with tractor and answer any questions concerning maintenance or operation that are not clear to him.

Checkup.....
Performed by

Signed.....
Dealer

Original—Dealer
Duplicate—Leave in Operators Manual for Purchaser

Signed.....
Customer

AFTER DELIVERY CHECKUP (Diesel)

(Owner's Name)	(Date Checkup Performed)
(Owner's Address)	
(Dealership)	(Town)
Tractor has been operated.....hours	
(Tractor Model and Serial Number)	

- | | |
|--|--|
| <input type="checkbox"/> Check traction clutch.
<input type="checkbox"/> Check PTO clutch.
<input type="checkbox"/> Check brakes.
<input type="checkbox"/> Operate hydraulic system and check oil level in rockshaft housing.
<input type="checkbox"/> Check tire pressure.
<input type="checkbox"/> Tighten cylinder heads and adjust tappets.
<input type="checkbox"/> Check fuel injection pump timing.
<input type="checkbox"/> Fuel filtering system.
<input type="checkbox"/> Check no load full governed engine speed.
<input type="checkbox"/> Tighten all bolts. | <input type="checkbox"/> Cooling system.
<input type="checkbox"/> Crankcase oil (Change oil and filter if necessary).
<input type="checkbox"/> Oil Level in transmission, hydraulic system, and steering gear.
<input type="checkbox"/> Lubricate all pressure fittings and oil cups.
<input type="checkbox"/> Check air cleaner.
<input type="checkbox"/> Check steering, bearing adjustment and front wheel toe-in.
<input type="checkbox"/> Batteries, starter, generator and lights.
<input type="checkbox"/> Check operation of all instruments. |
|--|--|

DEALER: Question purchaser carefully concerning his experience with tractor and answer any questions concerning maintenance or operation that are not clear to him.

Checkup.....
Performed by

Signed.....
Dealer

Original—Dealer
Duplicate—Leave in Operators Manual
for Purchaser

Signed.....
Customer

TO PURCHASERS OF CASE DIESEL TRACTORS

Congratulations on your purchase of a Case Diesel Tractor and welcome to the ever-increasing number of satisfied Case Owners.

The dependability and economical performance of your new Case Tractor will prove that you were wise in making this choice.

The organization back of your tractor has been building quality farm equipment for more than a century. Your Case Diesel Tractor was built in one of the largest and best equipped plants in the world. In this factory quality materials, precision machinery, high grade workmanship, thorough inspection, and complete testing equipment are combined to give you the best in performance and economical operation.

The care which you give your tractor will have a great deal to do with the service and satisfaction you get from it. By observing the precautions and suggestions in this manual, your Case Tractor will serve you well for many years. Make this manual your guide. Should you need information not covered here, or should your tractor require special servicing, contact your Case Dealer. He has trained men who are kept informed on the best methods of servicing Case Farming Equipment in the field or in his shop.

When it becomes necessary, after long use, to replace certain parts on your tractor, be sure to use only genuine Case Parts, which insure proper fit and continued good service. These may be obtained from your Case Dealer. It is always helpful to provide him with the Model and Serial Number of your tractor in addition to a description and part number, if available, of the parts required.

TABLE OF CONTENTS

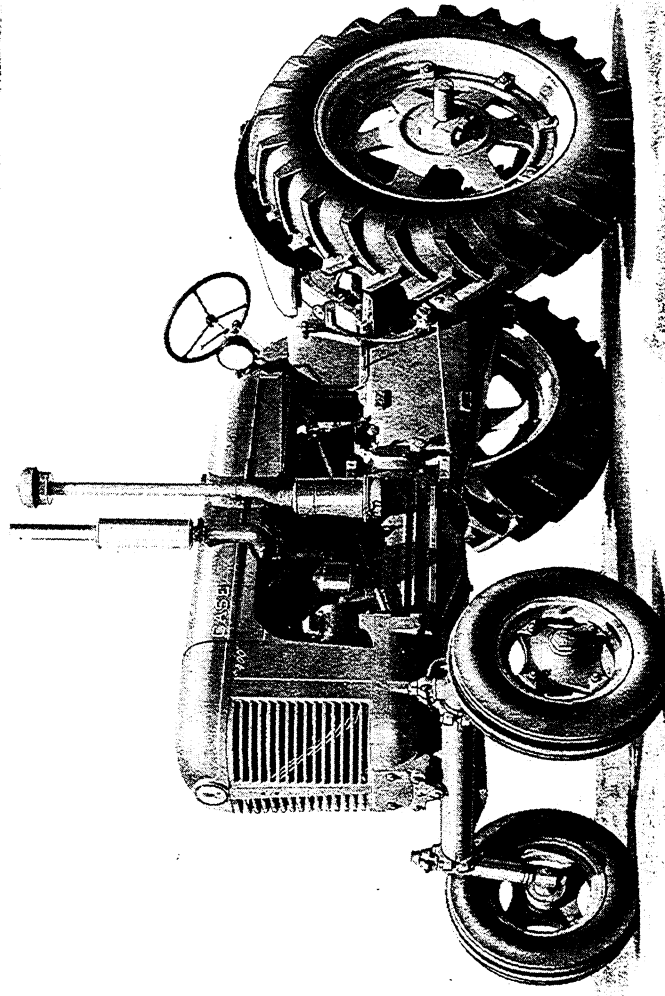
	Page
Serial Number	7
General Specifications	9
Diesel Engine Fuel	25
Fuel Specifications for a Suitable Number 2 Diesel Fuel.....	27
Fuel Recommendations for Cold Weather Operation.....	30
Fuel Handling and Storage.....	31
Lubrication	37
Recommended Lubricants and Approximate Capacities.....	39
Lubricating Point Locations.....	40 thru 44
Engine Lubrication.....	45
Transmission Lubrication.....	51
Rear Axle Drive Housing (Model 403 High Clearance).....	53
Hydraulic Control System.....	54
Constant Running Power Take-Off.....	56
Rockshaft Housing.....	56
Hydraulic Power Steering.....	57
Operating Instructions	59
Run-In Procedure.....	60
Operating Controls and Instrument Guide.....	62 thru 67
Diesel Engine Starting Procedure.....	68
Stopping Engine.....	69
Cold Weather Operation.....	70
Ether Starting Aid.....	72
Gear Selection.....	74, 75
Differential Brakes.....	76
Tire Sizes, Pressures and Rear Wheel Weights.....	77, 78
Drawbar.....	79
Belt Pulley.....	82
Constant Running Power Take-off.....	85
Constant Running Hydraulic Control.....	89
Eagle Hitch.....	96

TABLE OF CONTENTS Continued

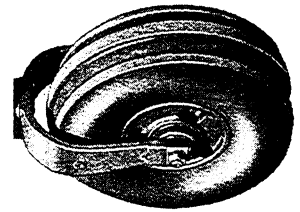
	Page
Rear Wheel Tread Spacing.....	101
Front Wheel Tread Spacing.....	110
Important Checks During Operation.....	116
Service Suggestions.....	119
Preventive Maintenance.....	131
Fuel System.....	133
Bleeding Fuel System.....	136
Checking Condition of Fuel Filters.....	138
Servicing Fuel Filters.....	142
Air Cleaner.....	146
Crankcase Breathers.....	150
Cooling System.....	151
Power Steering Drive Belt.....	157
Starting and Lighting Equipment.....	158
Adjusting Differential Brakes.....	166
Foot Clutch Adjustment.....	167
Valve Tappet Clearance.....	168
Power Take-off Clutch Adjustment.....	170
Repacking and Adjusting Front Wheel, Bearings.....	172
Storing the Tractor.....	175
Index.....	177
Warranty.....	179

**MODEL 401
GENERAL
PURPOSE
TRACTOR**

3 Tractors In 1



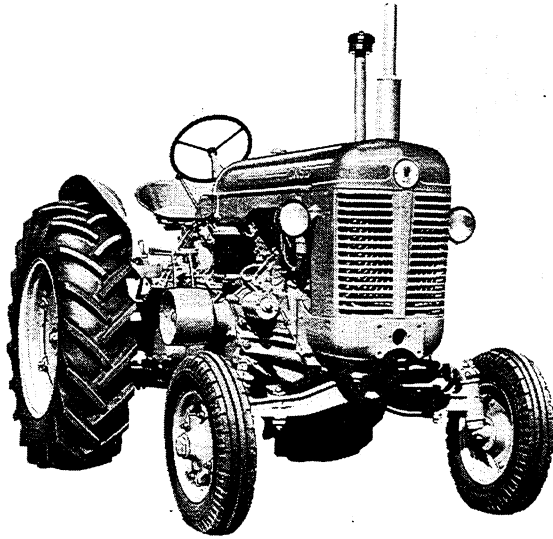
Adjustable
Front Axle
Attachment



Single
Front
Wheel
Attachment

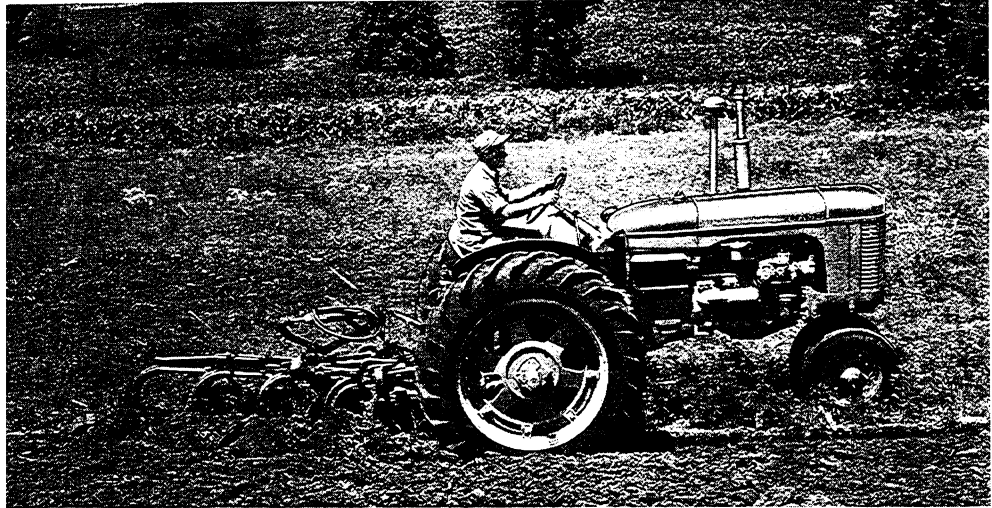


Dual
Front
Wheel
Attachment



Model 400 Standard 4 Wheel Tractor

Model 402 Orchard Grove
and
Model 403 High Clearance
Not Shown



INTRODUCTION

Case 400 Series Diesel Tractors are powered by a rugged four cylinder full diesel engine that is noted for its quiet operating characteristics and economy of operation.

The "Powr-range" transmission, 8 Speeds forward and 2 reverse, provides a full range of working speeds to handle all implements and tools in any type or condition of soil. The high speed (8th) road gear brings your fields closer to the farm yard in terms of non productive time spent on the road.

Advanced engineering includes the CASE POWRCEL combustion system which produces all of the available power out of each charge of injected fuel. To protect the closely fitted precision parts, the finest filters available have been provided to clean the fuel, the intake air and the crankcase oil.

The four basic rules of Diesel Engine operation, which are the deciding factors in determining the service life and economy of operation that you will receive from your tractor, are as follows:

1. CLEAN FUEL

- (a) Use only Number 2 Diesel Fuel that meets the specifications listed in this manual.
- (b) Follow the instructions regarding the recommended precautions when handling and storing fuel.

2. AIR CLEANER

Service the air cleaner regularly.

3. CRANKCASE OIL

Diesel Engines require the use of a heavy duty engine oil. Select oil that meets the proper service designations recommended in the lubrication section of this manual.

4. PERIODIC CHECKUPS

Your authorized Case Dealer has the service knowledge necessary to keep your tractor in top running condition.

Arrange to have him check your tractor at regular intervals.

NOTE: The terms "Right Hand" and "Left Hand" whenever used in this manual apply to the tractor when facing in the direction the tractor will move in forward operation.

SERIAL NUMBER

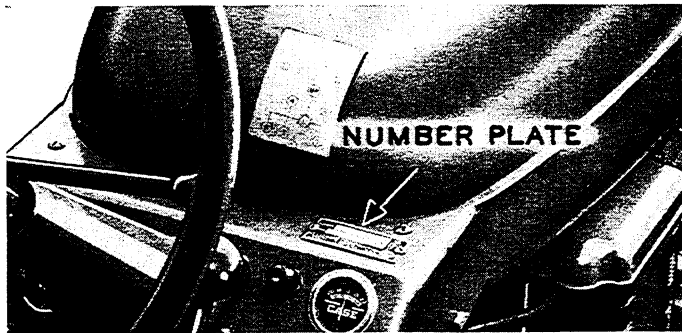


Figure 1. Number Plate on Instrument Panel

When ordering parts from your Authorized Case Dealer and in all contacts or correspondence with your dealer relative to the tractor, always specify the Serial Number and Model of your tractor.

The model and serial number is stamped on the number plate located on the instrument panel Figure 1. The serial number is also stamped on the left rear side of the engine block near the air cleaner, Figure 2.

For reference, fill in the Serial number of your 400 Series Diesel Tractor in the space provided below.

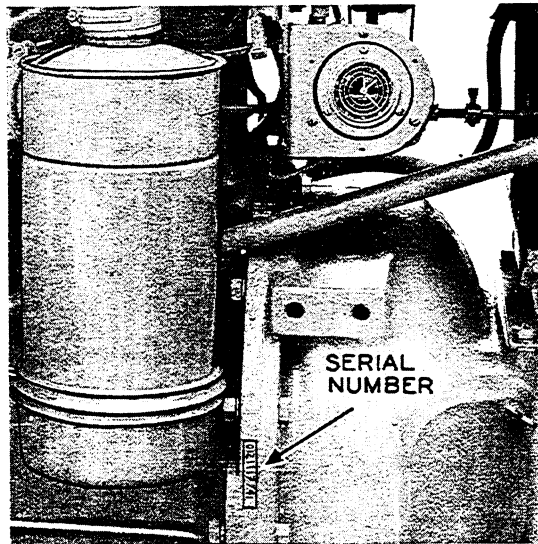


Figure 2. Serial Number Location on Engine Block

Model.....*Serial No.*.....



PREVENT ACCIDENTS

When operating tractors or self-propelled farm machines, or when trailing a farm machine or implement over a public thoroughfare after dark — —

- 1. Be sure the unit is equipped with headlights and that they are adjusted for highway use.**
- 2. Place suitable red lights and reflectors on the rear and sides of the unit so that its outline is well defined.**
- 3. COMPLY WITH YOUR STATE AND LOCAL LAWS GOVERNING LIGHTING REGULATIONS AND MAXIMUM WIDTH REGULATIONS.**

Buy Now



Our support email:

ebooklibonline@outlook.com