

ROTARY TILLERS

RT 1370

RT 1370 WR

RT 1380

RT 1380 WR

RT 1307

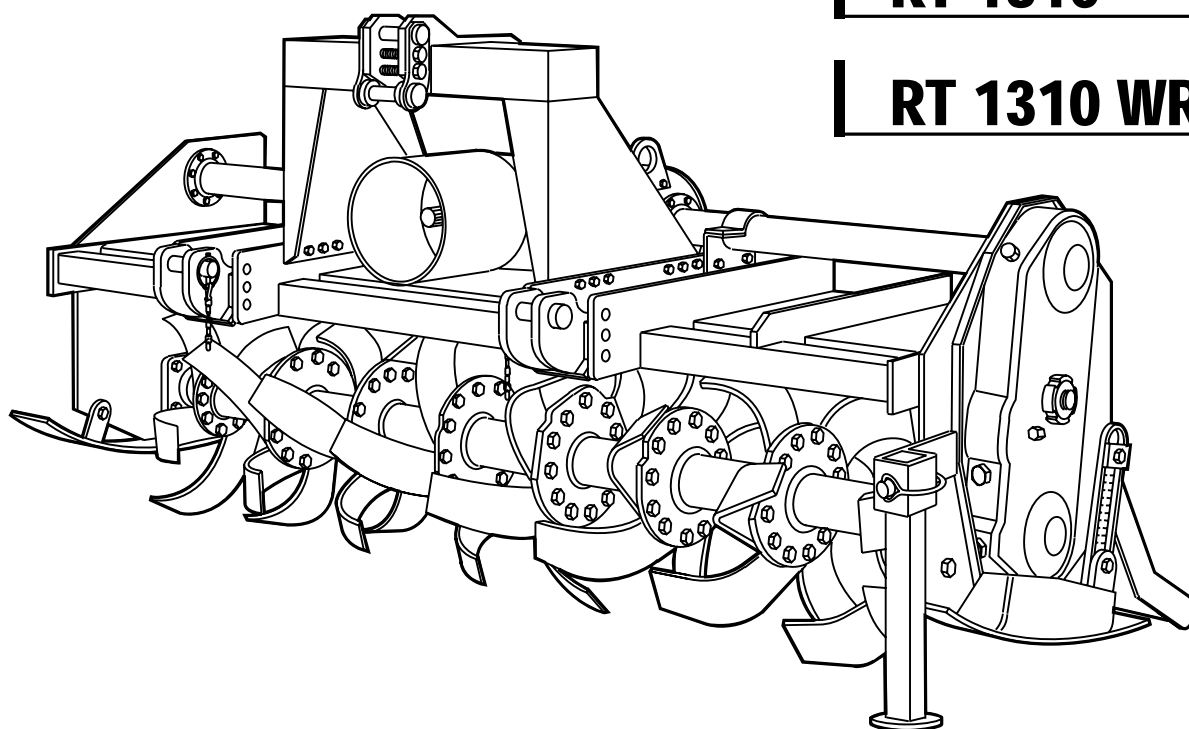
RT 1307 WR

RT 1308

RT 1308 WR

RT 1310

RT 1310 WR



FRONTIER
EQUIPMENT

TABLE OF CONTENTS

Technical specification		Change speed.....	15
Technical specification	4	Tilling tips	16
Technical specification - Hitch	4	During tilling	16
		Replacement parts	16
Safety signs		Service Machine Safely	
Safety-Alert simbol	5	Practice safe maintenance	17
Identification machine	5	Wear appropriate clothing	17
Machine safety labels	5	Stay clear of rotating drivelines	17
Machine safety labels and positions		Service lubrication	
Machine safety labels and positions	6	Service lubrication	18
Preparing the vehicle		Every 8 work hours	18
Preparing the tractor	8	Every 50 work hours	18
Park vehicle safety	8	Every 400 work hours	18
Stay clear of rotating drivelines	8	Greasing and lubricant points	19
		Lubricants	19
Installing		Bolts tightening torques	19
Quick Coupler	8	Service	
PTO shaft	9	Replacing tines	20
PTO shaft with clutch	10	Tines	20
Park vehicle safely	10	Troubleshooting	
Stay clear of rotating drivelines	10	Using troubleshooting chart	21
Removing		Storing machine	
Removing tiller with Quick Coupler	11	Storing tiller	22
		Removing tiller from storage	22
Operating		Assembly / Spare parts	
Operate safely	12	Assembly	23
Wear appropriate clothing	13	Installing driveline on tiller	26
Stay clear of rotating driveline	13	Spare parts	26
Raising parking stand	13	Warranty	
Lowering parking stand	13	Warranty	27
Levelling attachments (side-to-side)	13	Warranty for replacement parts	28
Levelling tiller (front-to-rear)	14		
Adjusting skid shoes (only skid version)	14		
Adjusting roller	14		
Adjusting leveling board	15		

TO THE DEALER:

Assembly and proper installation of this product is the responsibility of the Frontier dealer. Read manual instruction and safety rules. Make sure all items on the Dealer's Pre-Delivery Check List in the Operator's Manual are completed before releasing equipment to the owner.

The dealer must complete the Warranty Registration, located on the Frontier website. **Warranty claims will be denied if the Warranty Registration has not been completed.**

TO THE OWNER:

Read this manual before operating your frontier equipment. The information presented will prepare you to do a better and a safer job. Keep this manual handy for ready reference. Require all operators to read this manual carefully and become acquainted with all the adjustment and operating procedures before attempting to operate. Replacement manuals can be obtained from your selling dealer.

The equipment you have purchased has been carefully engineered and manufactured to provide dependable and satisfactory use. Like all mechanical products, it will require cleaning and upkeep. Lubricate the unit as specified. Observe all safety information in this manual and safety decals on the equipment.

For service, your authorized Frontier dealer has trained mechanics, genuine Frontier service parts, and the necessary tools and equipment to handle all your needs.

Use only genuine Frontier service parts. Substitute parts will void the warranty and may not meet standards required for safe and satisfactory operation. Record the model number and serial number of your equipment in the spaces provided:

Model: _____ **Date of Purchase** _____

Serial Number: (see Safety Decal section for location) _____

Provide this information to your dealer to obtain correct repair parts.

Throughout this manual, the term **IMPORTANT** is used to indicate that failure to observe can cause damage to equipment. The terms **CAUTION**, **WARNING** and **DANGER** are used in conjunction with the Safety-Alert Symbol, (a triangle with an exclamation mark), to indicate the degree of hazard for items of personal safety.



This Safety-Alert Symbol indicates a hazard and means **ATTENTION! BECOME ALERT! YOUR SAFETY IS INVOLVED!**



Indicates an imminently hazardous situation that, if not avoided, will result in death or serious injury.



WARNING

Indicates a potentially hazardous situation that, if not avoided, could result in death or serious injury, and includes hazards that are exposed when guards are removed.



CAUTION

Indicates a potentially hazardous situation that, if not avoided, may result in minor or moderate injury.

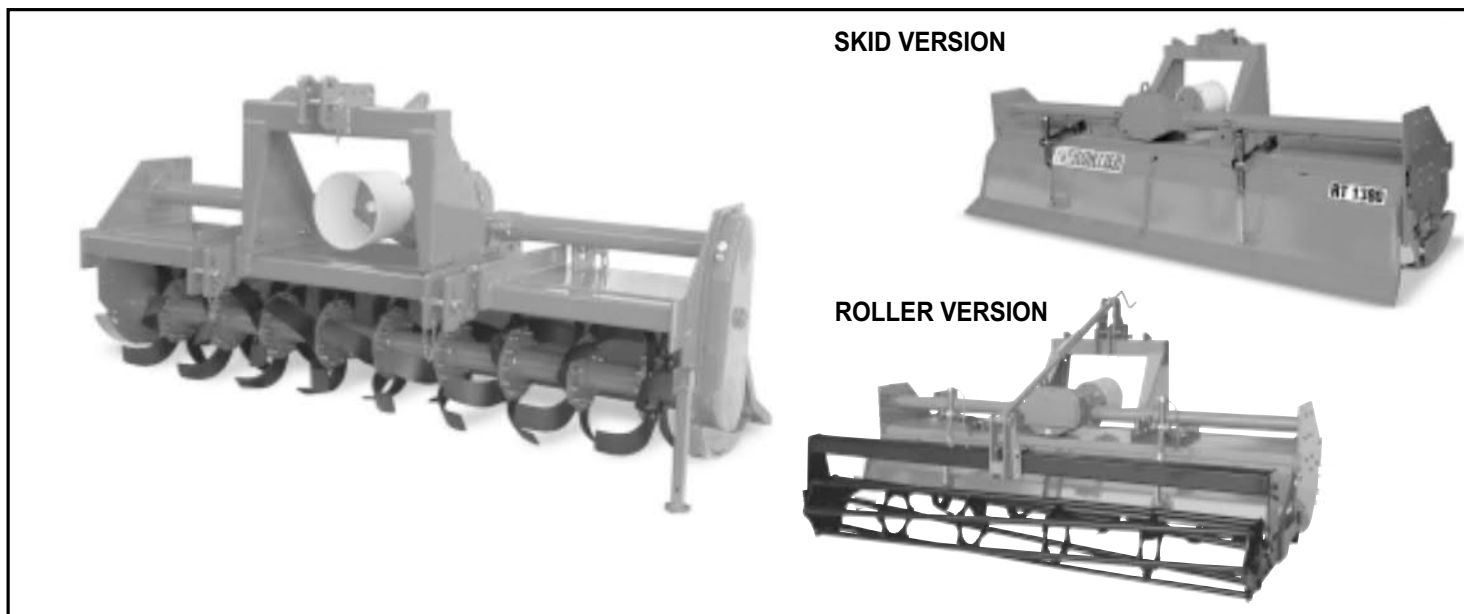
IMPORTANT

Indicates that a failure to observe can cause damage to equipment.

NOTE

Indicates helpful information.

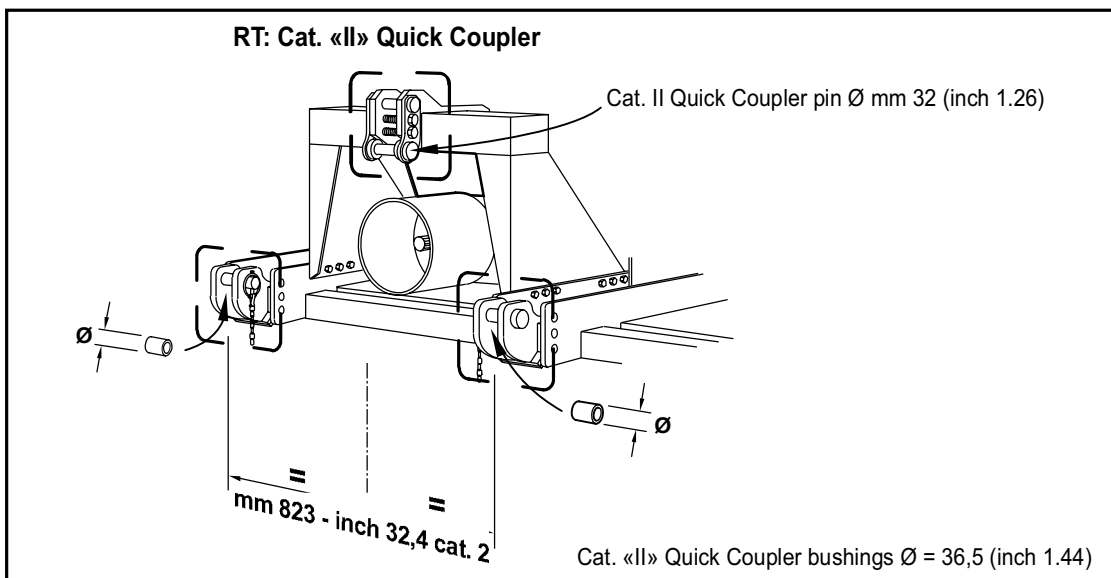
TECHNICAL SPECIFICATIONS



Model	Work/width inches	Tractor HP min	Tractor HP max	Weight lbs.	Side Drive	PTO shaft	Speeds gear box	Input speed	Hitch	Tines STD	Rotor blades	Rotor flanges
RT 1370	72	50	130	1373	Gear	Slip Clutch	2 + 2 Speed	540	Cat. "II" Quick coupler	L	6	8
RT 1370 WR	72	50	130	1628								
RT 1380	82	60	130	1487	Gear	Slip Clutch	2 + 2 Speed	540	Cat. "II" Quick coupler	L	6	9
RT 1380 WR	82	60	130	1760								
RT 1307	91	70	130	1602	Gear	Slip Clutch	2 + 2 Speed	540	Cat. "II" Quick coupler	L	6	10
RT 1307 WR	91	70	130	1878								
RT 1308	101	80	130	1707	Gear	Slip Clutch	2 + 2 Speed	540	Cat. "II" Quick coupler	L	6	11
RT 1308 WR	101	80	130	2002								
RT 1310	121	100	130	1918	Gear	Slip Clutch	2 + 2 Speed	540	Cat. "II" Quick coupler	L	6	13
RT 1310 WR	121	100	130	2244								

TECHNICAL SPECIFICATIONS - HITCH

rpm		
rpm	A	B
540		
175	21	19
214	19	21
262	17	23
143	23	17



SAFETY SIGNS

Safety-alert symbol

Read and recognize safety information.

Be alert to the potential for personal injury when you see this safety-alert symbol.



On your machine safety labels, the words DANGER, WARNING, and CAUTION are used with safety-alert symbol.

DANGER identifies the most serious hazards. In this manual, the word CAUTION and this symbol call attention to safety messages.

Identification machine

Identification plate machine

Machine safety labels

1) WARNING: AVOID INJURY FROM ROTATING KNIVES:

- Keep hands, feet and clothing away.

2) WARNING: AVOID INJURY FROM PTO:

- Keep all shields in place. Keep hands, feet and clothing away.
- Operate only with 540 RPM.

3) CAUTION: AVOID INJURY

- Read Operator's Manual
- Ballast power unit per operator's manual
- Know location and function of controls
- Keep all shields in place
- Stay clear of power driven parts
- Never carry riders
- Keep people and pets a safe distance away from machine

BEFORE DISMOUNTING OR SERVICING

- Shut off engine and remove key
- Lock brake for park
- Lower or block up machine

4) DANGER: ROTATING DRIVELINE - CONTACT CAN CAUSE DEATH - KEEP AWAY! - DO NOT OPERATE WITHOUT:

- All driveline, tractor and equipment shields in place
- Drivelines securely attached at both ends
- Drivelines shields that turn freely on driveline.

5) DANGER: SHIELD MISSING DO NOT OPERATE

Picture Note: Separate telescoping driveshaft members to locate safety label. Label attached to outer profile tube.



Thank you so much for reading.
Please click the “Buy Now!”
button below to download the
complete manual.



After you pay.

You can download the most
perfect and complete manual in
the world immediately.

Our support email:

ebooklibonline@outlook.com