

MX80C, MX90C and MX100C Tractors.

MX80C, MX90C and MX100C Tractors

Operators Manual

P.I.N. JJE1053089 and After

Don 6-20150



TRIM THIS EDGE

MX80C, MX90C and MX100C Tractors

P.I.N. JJE1053089 and After

Don 6-20150

TRIM THIS EDGE

RIGHT PAGE






THIS SAFETY ALERT SYMBOL INDICATES IMPORTANT SAFETY MESSAGES IN THIS MANUAL. WHEN YOU SEE THIS SYMBOL, CAREFULLY READ THE MESSAGE THAT FOLLOWS AND BE ALERT TO THE POSSIBILITY OF PERSONAL INJURY OR DEATH.

M171B

Safety Decals on this machine which use the words **Danger, Warning or Caution**, are defined as follows:

- **DANGER:** Indicates an immediate hazardous situation which if not avoided, will result in death or serious injury. The color associated with Danger is RED.
- **WARNING:** Indicates a potentially hazardous situation which if not avoided, will result in serious injury. The color associated with Warning is ORANGE.
- **CAUTION:** Indicates a potentially hazardous situation which if not avoided, may result in minor or moderate injury. It may also be used to alert against unsafe practices. The color associated with Caution is YELLOW.

Safety Decals on this machine which are ISO-two panel Pictorial type decals, are defined as follows:

- The first panel indicates the nature of the hazard.
- The second panel indicates the appropriate avoidance of the hazard.
- Background color is YELLOW.
- Prohibition symbols such as   and  if used, are RED.



WARNING

IMPROPER OPERATION OF THIS MACHINE CAN CAUSE INJURY OR DEATH. BEFORE USING THIS MACHINE, MAKE CERTAIN THAT EVERY OPERATOR:

- Is instructed in safe and proper use of the machine.
- Reads and understands the Manual(s) pertaining to the machine.
- Reads and understands ALL Safety Decals on the machine.
- Clear the area of other persons.
- Learns and practices safe use of machine controls in a safe, clear area before operating this machine on a job site.

It is your responsibility to observe pertinent laws and regulations and follow Case Corporation instructions on machine operation and maintenance.

GENERAL TABLE OF CONTENTS

TO THE OWNER	1
IDENTIFICATION NUMBERS/MACHINE COMPONENTS	6
PRODUCT IDENTIFICATION AND SERIAL NUMBERS	6
MACHINE COMPONENTS	8
SAFETY/DECALS	10
INTENDED USE	10
GENERAL SAFETY AND ACCIDENT PREVENTION REGULATIONS	11
TRANSPORTING PASSENGERS	11
OPERATION	12
LEAVING THE TRACTOR	12
IMPLEMENTS	12
PTO OPERATION	13
SERVICE	13
BATTERY SAFETY	14
HAZARDOUS CHEMICALS	14
BASIC RULE	14
SAFETY DECALS	15
ROLL OVER PROTECTIVE STRUCTURE (ROPS)	19
INSTRUMENTS/CONTROLS	20
TRACTOR ACCESS	21
OPERATORS SEAT	22
STEERING COLUMN ADJUSTMENT	28
STANDARD (ANALOG) INSTRUMENT CLUSTER	29
DELUXE (DIGITAL) INSTRUMENT CLUSTER	30
OPERATING CONTROLS	37
OPERATOR CAB ENVIRONMENT CONTROLS	47
ADDITIONAL CAB FEATURES	50
REAR VIEW MIRRORS	53

TRIM THIS EDGE

I

TRIM THIS EDGE

RIGHT PAGE

OPERATING INSTRUCTIONS	54
BEFORE STARTING THE ENGINE	54
RUN IN PROCEDURE	55
MASTER DISCONNECT SWITCH	55
SERVICE INDICATOR LAMPS	56
NORMAL STARTING PROCEDURE	58
COLD TEMPERATURE OPERATION	60
PARKING THE TRACTOR	65
OPERATING THE TRANSMISSION	67
CAB ENVIRONMENT	71
DRAWBAR	78
HEIGHT ADJUSTABLE TRAILER HITCHES	82
AUTO HITCH	85
IMPLEMENT/TRAILER DRAWBAR DIMENSIONS	90
TRAILER BRAKE COUPLINGS	91
AUXILIARY ELECTRICAL POWER SOCKETS	94
TRACTOR WARNING LAMPS	96
TOWING THE TRACTOR	98
HOW TO TRANSPORT THE TRACTOR	99

TRIM THIS EDGE

FIELD OPERATION	100
TRANSMISSION CREEPER OPERATION	100
WHEEL SLIP INDICATOR	101
PROGRAMMING THE DIGITAL INSTRUMENT CLUSTER	103
DISTANCE FUNCTION OPERATION	114
AREA FUNCTION OPERATION	116
REAR POWER TAKEOFF	118
FRONT POWER TAKEOFF OPERATIONi	132
REAR THREE POINT HITCH PREPARATION	134
REAR THREE POINT HITCH OPERATION	143
RIDE CONTROL	153
REAR THREE POINT HITCH DIAGNOSTIC DISPLAY	155
DIFFERENTIAL LOCK CONTROL	157
MECHANICAL FRONT DRIVE (MFD) OPERATION	162
FRONT HITCH PREPARATION	168
FRONT HITCH OPERATION	170
REMOTE HYDRAULIC VALVES	171
REMOTE HYDRAULICS OPERATION	176
IMPLEMENT CABLE ACCESS	181

II

TRIM THIS EDGE

LEFT PAGE

TIRES/WHEELS/SPACING/BALLAST	182
TIRES/WHEELS/SPACING/BALLAST	182
REAR TIRES, 30km/h Transmission	187
FRONT TIRES, 30km/h Transmission -	
Two Wheel Drive	188
Mechanical Front Drive (MFD)	189
REAR TIRES, 40km/h Transmission	190
FRONT TIRES, 40km/h Transmission	
Two Wheel Drive	191
Mechanical Front Drive (MFD)	192
TIRE AND WHEEL SERVICE	193
INSTRUMENT CLUSTER PROGRAMMING -	
FOR DIFFERENT TIRE SIZES	194
FRONT AXLE AND FRONT TREAD ADJUSTMENTS	196
FRONT TO REAR TIRE SIZE COMBINATIONS	207
FRONT WHEEL FENDERS	208
REAR WHEEL TREAD ADJUSTMENT	209
TRACTOR BALLAST	216
LUBRICATION/MAINTENANCE	230
ENVIRONMENT	230
PLASTIC AND RESIN PARTS	230
SERVICE PARTS	230
TOOL BOX	231
HOURLY METER	232
TILT HOOD	233
LUBRICANTS AND CAPACITIES	234
REGULAR SERVICE CHART	236
10 HOURS OR DAILY	238
50 HOUR INTERIM SERVICE	242
100 HOUR INTERIM SERVICE	247
250 HOUR INTERIM SERVICE	253
500 HOUR INTERIM SERVICE	262
1000 HOUR MAIN SERVICE	269
2000 HOUR MAIN SERVICE	285
GENERAL MAINTENANCE	291

TRIM THIS EDGE

III

TRIM THIS EDGE

RIGHT PAGE

ELECTRICAL SYSTEM	294
BATTERIES	294
BULB AND LAMP REPLACEMENT	299
FUSES AND RELAYS	308
RELAYS	310
MACHINE STORAGE	313
SPECIFICATIONS	315
DIESEL ENGINES	315
ELECTRICAL SYSTEM	317
GENERAL MACHINE	318
TRAVEL SPEEDS	322
APPROXIMATE TRACTOR DIMENSIONS	327
APPROXIMATE TRACTOR WEIGHTS	333
NOISE LEVELS	335
DETAIL INDEX	336
CASE TECHNICAL MANUALS	343

TRIM THIS EDGE

TO THE OWNER

**MX100C TRACTOR
With Mechanical Front Drive (MFD)**



DR99G163

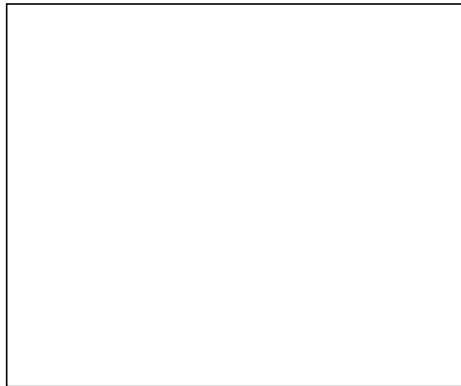
Dealer Stamp

TRIM THIS EDGE



Manufacturer:

CASE UNITED KINGDOM LIMITED
Wheatley Hall Road
Doncaster
South Yorkshire
DN2 4PG
ENGLAND



TRIM THIS EDGE

RIGHT PAGE

TO THE OWNER

MX90C and MX80C Tractors



MX90C TRACTOR
Deluxe Cab with MFD.

TRIM THIS EDGE

MX80C TRACTOR
Low Profile Cab
with 2WD.



DR99G168 & DR99G165

2

TRIM THIS EDGE

LEFT PAGE

How To Use This Manual

Read this manual before you start the engine or operate your tractor. If you need any more information, see your Case dealer.

This manual contains important information about the safe operation, adjustment and maintenance of your Case Tractor. To help you find information easily this manual has been separated into chapters, as shown in the General Table of Contents. The operation of the tractor has been separated into four main chapters:

1. INSTRUMENTS/CONTROLS - Showing the location and description of all controls.
2. OPERATING INSTRUCTIONS - General information for every day tractor operation, e.g. starting/stopping the tractor, operating the transmission etc.
3. FIELD OPERATION - Information for various operations specifically for use in the field, e.g. 3 point hitch, rear PTO etc.
4. TIRES/WHEELS/SPACING/BALLAST - Adjustments for various tractor operating applications, e.g. tire pressures, tread widths etc.

The maintenance of the tractor has been separated into two main chapters:

1. LUBRICATION/MAINTENANCE - Service interval hours, and adjustments.
2. ELECTRICAL SYSTEM - General electrical service information.

IMPORTANT: Refer to the Detail Index at the end of this manual for locating specific items about your machine.

The right and left of the tractor in this manual are the same as your right and left when sitting in the tractor seat looking forward.

DO NOT operate or permit anyone to operate or service this machine until you or the other persons have read this manual. Use only trained operators who have demonstrated the ability to operate and service this machine correctly and safely.

This tractor, with standard equipment and authorized attachments, is intended to be used for farming, and related operations.

DO NOT use this machine for any application or purpose other than those described in this manual. Consult an authorized dealer or the Case Corporation on changes, additions or modifications that can be required for this machine to comply with various country regulations and safety requirements. Unauthorized modifications may cause serious injury or death. Anyone making such unauthorized modifications is responsible for the consequences.

Manual Storage

Keep the Operators Manual stored in the manual storage compartment equipped on this machine.

Make sure this manual is complete and in good condition.

Contact your dealer to obtain additional manuals or for any further information or assistance about your machine.

Your dealer has technicians with special training that know the best methods of repair and maintenance for your tractor.



DP99G142

IMPORTANT: *This operators manual is part of your tractor. If the tractor is sold, loaned or rented, the operators manual MUST go with it.*

TRIM THIS EDGE

Declaration of Conformity

This tractor complies with the provisions of directive (89/336/EEC):

- Electromagnetic Compatibility.

EMC - Supplementary Information

Safety information for the supplementary installation of electrical and electronic appliances and/or components.

This tractor is equipped with electronic constituents and component parts whose function can be influenced by electromagnetic radiations of other appliances. Such influences can cause hazards for persons if the following safety information is not taken into account.

1. For supplementary installation of electrical and electronic appliances and/or constituents on the tractor with a connection to the onboard system, the user HAS to verify whether the installation causes disturbances to the electronics on the tractor or other constituents. This particularly applies to:

- A. Powershift Control
- B. Instrument Cluster

Also it has to be taken into account that the supplementarily installed electrical and electronic components comply with the EMC Directive 89/336/EEC in the respective current version and that they are CE marked.

2. For the supplementary installation of mobile communication systems (ie. radio communication, mobile telephone) the following additional requirements have to be fulfilled:
 - A. Only devices with an approval complying with the valid national regulations must be installed.
 - B. The devices must be firmly installed.
 - C. The operation of portable or mobile devices within the cab of the tractor is ONLY permitted if the device has a fixed outside antenna.
 - D. The transmitting part shall be installed separately to the tractor electronics.
 - E. Installation of the antenna must be carried out by a professional and the antenna must have a good ground connection between the antenna and the tractor ground.

For the correct size cabling, installation and the maximum permissible current supply, the installation instructions of the tractor manufacturer have to be considered additionally.

IDENTIFICATION NUMBERS/MACHINE COMPONENTS

PRODUCT IDENTIFICATION AND SERIAL NUMBERS

Write your machine Model number, Product Identification Number (P.I.N.), and Serial numbers on the lines provided below. If needed, give these numbers to your Case dealer when you need parts or information for your machine.

Make a record of the numbers. Keep the record and your Manufacturers Statement of Origin in a safe place. If the machine is stolen, report the numbers to your local police.

P.I.N. Plate Details

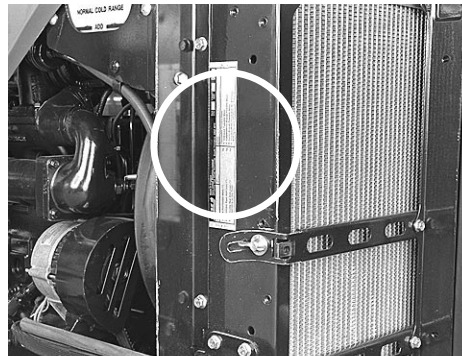
CASE IH		Made In England By Case United Kingdom Limited Wheatley Hall Road Doncaster South Yorkshire DN2 4PG	77/537/EEC	
TYPE	EEC NUMBER	PRODUCT IDENTIFICATION NUMBER		
+ Total Permissible Mass (+):		kg	Permissible Towable Mass :	
+ Permissible Front Axle Load (+):		kg	+ Unbraked Towable Mass :	
+ Permissible Rear Axle Load (+):		kg	+ Independently-Braked Towable Mass:	
(+) Depending on the Types			+ Inertia-Braked Towable Mass :	
			+ Towable Mass Fitted With An Assisted Braking System: (Hydraulic or Pneumatic):	
			kg	

DI96M018

TRIM THIS EDGE

Number Locations

TRACTOR



DK98A045

TRACTOR (In Cab)



DP97C147

Model Number _____

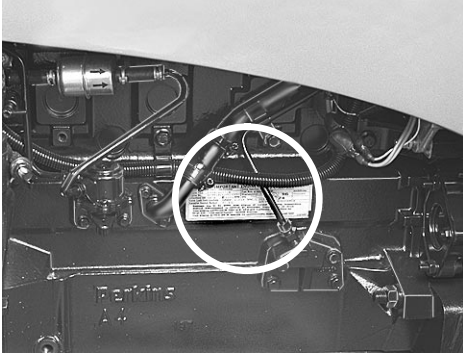
Product Identification Number _____

TRIM THIS EDGE

LEFT PAGE

IDENTIFICATION NUMBERS/MACHINE COMPONENTS

ENGINE



DK98A044

Serial Number _____

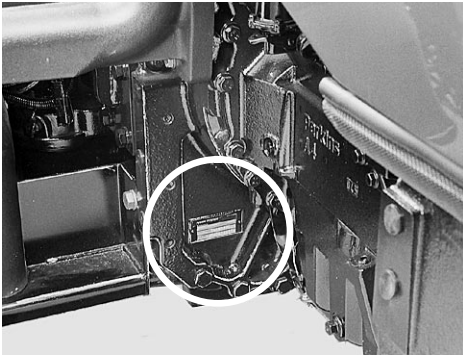
MFD AXLE



DP96H250

Serial Number _____

TRANSMISSION



DP98J219

Serial Number _____

CAB



DP98J144

Serial Number _____

TRIM THIS EDGE

TRIM THIS EDGE

RIGHT PAGE

Thank you so much for reading.
Please click the “Buy Now!”
button below to download the
complete manual.



After you pay.

You can download the most
perfect and complete manual in
the world immediately.

Our support email:

ebooklibonline@outlook.com