

# **8860/8860HP Windrower Tractor**

## **Operators Manual**

Rac 6-2023

Reprinted





*THIS SAFETY ALERT SYMBOL INDICATES IMPORTANT SAFETY MESSAGES IN THIS MANUAL. WHEN YOU SEE THIS SYMBOL, CAREFULLY READ THE MESSAGE THAT FOLLOWS AND BE ALERT TO THE POSSIBILITY OF PERSONAL INJURY OR DEATH.*

**M171B**

## IMPORTANT

If This Machine Is Used By An Employee Or Is  
Loaned Or Rented, Make Certain That The  
Operator(s), Prior To Operating:

1. Is Instructed In Safe And Proper Use.
2. Reviews And Understands The  
Manual(s) Pertaining To The Machine.



## 8860/8860HP Windrower Tractor



825W-98F01

### TO OUR CUSTOMER

We appreciate your confidence in CASE IH Farm Equipment and thank you for your patronage. In preparing this manual, we hope we have furnished you with a valuable tool for operating and maintaining this fine machine. Use this manual as your guide. Practicing the instructions given here will result in many years of dependable service from your machine.

Your Dealer can give you assistance with CASE IH parts and specially trained personnel to assist you in repair and maintenance.

Call your Dealer if you need any assistance or information.

#### **CALIFORNIA Proposition 65 Warning**

Diesel engine exhaust and some of its constituents are known to the State of California to cause cancer, birth defects, and other reproductive harm.

## TABLE OF CONTENTS

SPECIFICATIONS .....	IV
SERIAL NUMBERS .....	VII
CHECKLISTS .....	VIII
SAFETY PRECAUTIONS .....	IX
GENERAL INFORMATION .....	1
DESCRIPTION .....	5
SERVICING .....	17
PREPARATION .....	43
OPERATION .....	45
MAINTENANCE .....	63
TROUBLESHOOTING .....	119
STORAGE .....	109
EXTRA EQUIPMENT .....	121
ALPHABETICAL INDEX .....	123

## SPECIFICATIONS

# SPECIFICATIONS

(Specifications and design are subject to change without notice and without liability therefore.)

**MODEL** ..... 8860 and 8860HP Windrower Tractor

### DIMENSIONS AND WEIGHTS

#### Length

overall with draper header ..... 7267 mm (286.1 IN)  
overall with auger header ..... 6543 mm (257.6 IN)  
wheel base ..... 3556 mm (140 IN)

#### Height

top of cab ..... 3308 mm (130.2 IN)  
clearance under walking beam ..... 953 mm (37.5 IN)  
clearance under frame ..... 950 mm (37.4 IN)

#### Width

outside of hubs ..... 3034 mm (119.5 IN)  
with standard tires ..... 3706 mm (145.9 IN)

Tread width, drive tires ..... 3202 mm (126 IN)

#### Tread width, tailwheels

minimum ..... 2144 mm (84.4 IN)  
maximum ..... 3048 mm (120 IN)

#### Weight (approximate)

without header ..... 3629 kg (8000 LB)

### TIRES

Drive wheels ..... 19.5L x 24, bar tread  
19.5L x 24, turf tread

wheel bolts ..... 5/8 IN  
wheel bolt torque ..... 271 N·m (200 LB·FT)

Tailwheels ..... 14L x 16.1 6-ply implement rib

wheel bolts ..... 9/16-18  
wheel bolt torque ..... 165 N·m (120 LB·FT)

Tire pressure ..... drive wheels 20 psi  
tailwheels 10 psi

### ENGINE

#### Model

8860 ..... Case, 4-390  
8860HP ..... Case, 4T-390

#### Horsepower

8860 ..... 80 @ 2500 r/min (rpm)  
8860HP ..... 110 @ 2500 r/min (rpm)

High idle ..... 2700 r/min (rpm)

Displacement ..... 3.9 L (239 CU IN)

Cooling system capacity ..... 20.8 L (22 U.S. quarts)

Cooling fan diameter ..... 586 mm (23 IN)

Fuel ..... ASTM No. 2 Diesel

Fuel tank capacity ..... 227 L (60 U.S. gallons)

### ELECTRICAL SYSTEM

System voltage ..... 12 volts

Grounding ..... negative

#### Batteries

quantity ..... 2

capacity, each ..... 12V, 450 amp  
minimum cranking capacity @ 0°F

type ..... SAE J537, Size 24 or 27, top/side post

#### Alternator

manufacturer ..... Robert Bosch

output ..... 95 amperes

### GROUND DRIVE SYSTEM

Final drive ..... double chain reduction

primary reduction chain ..... No. 50

secondary reduction chain ..... No. 80

Tandem pump ..... Vickers Model 19, piston

#### Motors

without two speed ground drive ..... Vickers Model  
MFE19, fixed displacement

with two speed ground drive ..... Vickers Model  
MVE19, variable displacement

#### Speed, approximate

without two speed

ground drive ..... 0 to 19 km/h (0 to 12 mph)

with two speed ground drive

FIELD range ..... 0 to 16 km/h (0 to 10 mph)

ROAD range ..... 0 to 24 km/h (0 to 15 mph)

## SPECIFICATIONS

## HEADER DRIVE SYSTEM

Pump ..... Vickers Model 19, piston  
Motor ..... Eaton, fixed displacement piston

## HYDRAULIC SYSTEM

Ground drive system	
relief pressure .....	37 925 kPa (5500 psi)
Header drive system	
relief pressure .....	34 475 kPa (5000 psi)
Header lift system	
relief pressure .....	17 237 kPa (2500 psi)

## HEADER FLOTATION SYSTEM

Type ..... hydraulic with accumulator,  
adjustable from cab  
Accumulator charge pressure ..... 6205 kPa (900 psi)

## CAB

Cab glass ..... tinted, 6.8 m<sup>2</sup> (73 sq ft)  
Steering column ..... adjustable pivot and tilt  
Gages ..... analog gages:  
                                fuel, volts, water temperature,  
                                oil pressure, flotation pressure,  
                                speedometer (optional)

## AIR CONDITIONING

System size .....	22 000 BTU/hr
Refrigerant .....	HFC 134a
Capacity .....	1.8 kg (4.0 LBS)
Compressor .....	Sanden 507H
displacement .....	154.9 cc (9.5 CU IN)

## ACCESSORIES

Lighting ..... 5 lamps front, rectangular halogen  
1 lamp rear, rectangular halogen  
flashers on header and tractor  
2 lamps side, tail light, turn signals

Rear view mirrors, right and left ..... STD

Controls ..... Shape-coded handles

## LUBRICATION

Grease fittings  
lubricant ..... CASE IH 251 HEP Lithium Grease

Wheel bearings  
lubricant ..... CASE IH 251 HEP Lithium Grease

Engine oil  
quantity with filter change ..... 10.5 L (11 U.S. quarts)  
type of fluid ..... Case IH No. 1 Engine Oil,  
SAE 15W 40, API CE

Hydraulic system quantity

total system .....	87 L (23 U.S. gallons)
reservoir .....	76 L (20 U.S. gallons)
type of fluid .....	Engine Oil, SAE 15W 40
type of fluid, alternate .....	Case IH Hy-Tran Plus

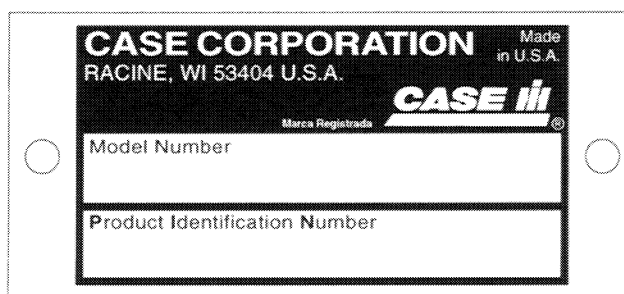
*NOTE: Hy-Tran Plus can be added to factory-installed fluid, but to get the full benefit of the qualities of Hy-Tran Plus a complete oil replacement is required.*

Chaincases, final drive  
quantity, each ..... 3.8 L (8 pints)  
lubricant ..... Case IH 135H EP Gear Lube 85W 140

# SERIAL NUMBERS

When parts or assistance are needed, or when writing to your Authorized Case IH Dealer, always give this information:

1. Model Number of the Machine
2. Product Identification Number



**MODEL NUMBER AND PRODUCT  
IDENTIFICATION NUMBER PLATE**

**FOR LOCATION OF THE  
PRODUCT IDENTIFICATION NUMBER PLATE  
ON THIS MACHINE, SEE THE GENERAL INFORMATION  
SECTION IN THIS MANUAL.**

Write the serial numbers of your machine on the lines below.

**MODEL NUMBER** \_\_\_\_\_

**PRODUCT IDENTIFICATION NUMBER** \_\_\_\_\_

# CHECKLISTS



Use good safety practices when working around this machine.

## DAILY CHECKLIST

- \_\_\_\_\_ Do the daily lubrication and service items and those items whose calendar time is due. See the Servicing section for lubrication and service points. See the Preparation section for additional items to check while lubricating and servicing the machine.
- \_\_\_\_\_ Check pulleys and components for looseness and alignment.
- \_\_\_\_\_ Look for loose or missing bolts or parts.
- \_\_\_\_\_ Check the hydraulic system connections for leaks.
- \_\_\_\_\_ If the machine is to be transported on a road or highway at night or during the day, accessory lights, warning devices and slow moving vehicle emblem must be used for adequate warning to operators of other vehicles. Make sure all warning lights are operational. Observe local governmental regulations concerning movement of slow and overwidth vehicle.

## BEFORE EACH SEASON

- \_\_\_\_\_ Do all the items on the Daily checklist
- \_\_\_\_\_ Review the Safety Precautions section.
- \_\_\_\_\_ Remove accumulated dirt, trash, and crop material from machine. Make sure the area between the forming shields and the tractor mainframe is clean.
- \_\_\_\_\_ Replace primary and secondary air cleaner elements.
- \_\_\_\_\_ Lubricate all lubrication points as required. Visually inspect all lubrication points to make sure lubrication is being received. See the Servicing section for service points.
- \_\_\_\_\_ Check the level of the coolant in the coolant recovery tank.
- \_\_\_\_\_ Check the radiator for dirt and trash. Clean as required.
- \_\_\_\_\_ Replace hydraulic reservoir breather air filter.
- \_\_\_\_\_ With windrower operating in a stationary position, have an assistant observe the operation of moving parts. Watch for any signs of faulty operation, overheated bearings, and listen for any unusual sounds.
- \_\_\_\_\_ Make sure the proper operating adjustments have been made for your crop.
- \_\_\_\_\_ See the Extra Equipment section for extra equipment that will help you do a better job.



## SAFETY PRECAUTIONS

### Safety Information

Understand that your safety and the safety of other persons is measured by how you service and operate this machine. Know the positions and operations of all controls before you try to operate this machine. **MAKE SURE YOU CHECK ALL CONTROLS IN A SAFE AREA BEFORE STARTING YOUR WORK.**

**READ THIS MANUAL COMPLETELY** and make sure you understand the controls. All equipment has a limit. Make sure you understand the speed, brakes, steering, stability, and load characteristics of this machine before you start to operate the machine.

The safety information given in this manual does not replace safety codes, insurance needs, state and local laws. Make sure your machine has the correct equipment needed by the local laws and regulations.



**THIS SAFETY ALERT SYMBOL INDICATES IMPORTANT SAFETY MESSAGES IN THIS MANUAL. WHEN YOU SEE THIS SYMBOL, CAREFULLY READ THE MESSAGE THAT FOLLOWS AND BE ALERT TO THE POSSIBILITY OF PERSONAL INJURY OR DEATH.**

## **SAFETY PRECAUTIONS**

Read and understand all operating instructions and precautions before attempting to operate or service the machine.

After using the Operator's Manual, return the manual to the operators manual storage compartment inside the cab.

Before doing any maintenance or service work on the tractor or the header you must:

- Park the machine on a solid level surface.
- Put all controls in NEUTRAL.
- Apply the parking lock.
- Center and lock the steering wheel.
- When working on the tractor, lower the header to the ground.
- When working on the header, raise the header all the way.
- Stop the engine and take the key with you.
- Look and Listen! Make sure all moving parts have stopped.
- If the header is raised, install the cylinder safety stop on the left header lift cylinder.

When the header is raised for service or maintenance work, the cylinder safety stop must be installed on the left header lift cylinder to prevent lowering of the header.

Never check or lubricate chains while the machine is running.

After lubricating, servicing or adjusting the machine, make sure all tools and equipment have been removed.

All shields and guards must be in position before operating the machine.

Emphasize the importance of safety when working around and operating the machine.

Caution others, especially children, about climbing on the machine or being too close while machine is operating.

Never permit riders on the machine at any time except in the instructional seat, if installed.

The instructional seat is to be used only for instructing operators.

The instructional seat is only intended for short periods of use.

**Make sure all persons are away from the machine before operating the machine.**

**Never stand near the header while the machine is operating.**

**Never stand behind tractor while the header is running.**

**Never operate the machine at high speeds in crowded places.**

**Never suddenly reverse wheels to stop or backup.**

**Always remain seated and have seat belt fastened while operating machine.**

**Securely fasten your seat belt when using the operator's seat or the operator instruction seat. The seat belt can help insure your safety if used and maintained. Never wear a seat belt loosely or with slack in the belt system. Never wear the seat belt in a twisted condition or pinched between the seat structural members.**

**Any time the engine is running and the parking lock is disengaged, the machine will turn if the steering wheel is moved, even though the travel control lever is in neutral.**

**Always lower the header to the ground when parking.**

**Do not tow or drive the machine with header up and safety stops in safety position.**

**Always apply the parking lock when parking, and center and lock the steering wheel.**

**Always park crosswise to the slope when parking on a hill.**

**Always travel with the header as low as possible.**

**Always keep hands, feet, and clothing away from moving parts.**

## **SAFETY PRECAUTIONS**

Entanglement in rotating drive shafts can cause serious injury or death. Do not operate the machine with drive shafts shields open or removed.

Never check drive belts while machine is running.

Never remove the cap from a hot radiator; escaping steam and hot fluids can cause personal injury.

Hydraulic fluid escaping under pressure can have sufficient force to penetrate the skin, causing serious injury. Be sure to relieve all pressure from hydraulic lines before disconnecting them. Before applying pressure to the system, make sure all connections are tight and that hoses and lines have not been damaged.

Hydraulic fluid escaping from a very small hole can be almost invisible. Always use a piece of cardboard or wood, rather than hands, to search for suspected leaks. If injured by escaping hydraulic fluid, see a doctor immediately.

**BE AWARE** of the width of the machine. Be careful when roading or transporting the machine on narrow roads and across narrow bridges. See Specifications for the overall dimensions.

Always use ample safety warnings and adequate lights when roading or transporting the machine on public roads. Be sure the SMV emblem is visible. Check with your local law enforcement agencies for specific requirements.

See the Operation Section for information for safe transporting of the machine.

### **Tire Safety**

Tire explosion and/or serious injury can result from over inflation. **DO NOT** exceed tire inflation pressures. See Specifications for the correct pressure.

When tire service is necessary, have a qualified tire mechanic service the tire.

**DO NOT** weld to the wheel or rim when a tire is installed. Welding will cause an explosive air/gas mixture that will ignite with high temperatures. This can happen to tires that are inflated or deflated. Removing air or breaking the bead is **NOT** enough. The tire must be completely removed from the rim prior to welding.

Thank you so much for reading.  
Please click the “Buy Now!”  
button below to download the  
complete manual.



After you pay.

You can download the most  
perfect and complete manual in  
the world immediately.

Our support email:

[ebooklibonline@outlook.com](mailto:ebooklibonline@outlook.com)