

TRIM THIS EDGE

# **MX150 and MX170 Tractors**

**Don 6-2051**

TRIM THIS EDGE

RIGHT PAGE






*THIS SAFETY ALERT SYMBOL INDICATES IMPORTANT SAFETY MESSAGES IN THIS MANUAL. WHEN YOU SEE THIS SYMBOL, CAREFULLY READ THE MESSAGE THAT FOLLOWS AND BE ALERT TO THE POSSIBILITY OF PERSONAL INJURY OR DEATH.*

M171B

Safety Decals on this machine which use the words **Danger, Warning or Caution**, are defined as follows:

- **DANGER:** Indicates an immediate hazardous situation which if not avoided, will result in death or serious injury. The color associated with Danger is RED.
- **WARNING:** Indicates an potentially hazardous situation which if not avoided, will result in serious injury. The color associated with Warning is ORANGE.
- **CAUTION:** Indicates an potentially hazardous situation which if not avoided, may result in minor or moderate injury. It may also be used to alert against unsafe practices. The color associated with Caution is YELLOW.

Safety Decals on this machine which are ISO-two panel Pictorial type decals, are defined as follows:

- The first panel indicates the nature of the hazard.
- The second panel indicates the appropriate avoidance of the hazard.
- Background color is YELLOW.
- Prohibition symbols such as   and  if used, are RED.



**WARNING**

IMPROPER OPERATION OF THIS MACHINE CAN CAUSE INJURY OR DEATH. BEFORE USING THIS MACHINE, MAKE CERTAIN THAT EVERY OPERATOR:

- Is instructed in safe and proper use of the machine.
- Reads and understands the Manual(s) pertaining to the machine.
- Reads and understands ALL Safety Decals on the machine.
- Clear the area of other persons.
- Learns and practices safe use of machine controls in a safe, clear area before operating this machine on a job site.

It is your responsibility to observe pertinent laws and regulations and follow Case Corporation instructions on machine operation and maintenance.

# GENERAL TABLE OF CONTENTS

<b>TO THE OWNER .....</b>	<b>1</b>
PRODUCT IDENTIFICATION AND SERIAL NUMBERS .....	5
<b>IDENTIFICATION NUMBERS/MACHINE COMPONENTS .....</b>	<b>5</b>
MACHINE COMPONENTS .....	7
<b>SAFETY/DECALS .....</b>	<b>8</b>
INTENDED USE .....	8
GENERAL SAFETY AND ACCIDENT .....	9
PREVENTION REGULATIONS .....	9
TRANSPORTING PASSENGERS .....	9
OPERATION .....	9
LEAVING THE TRACTOR .....	10
IMPLEMENTS .....	10
PTO OPERATION .....	10
SERVICE .....	11
HAZARDOUS CHEMICALS .....	11
BASIC RULE .....	11
SAFETY DECALS .....	12
ROLL OVER PROTECTIVE STRUCTURE (ROPS) .....	16
<b>INSTRUMENTS/CONTROLS .....</b>	<b>17</b>
TRACTOR ACCESS .....	17
OPERATORS SEAT .....	18
STEERING COLUMN ADJUSTMENT .....	22
DELUXE (DIGITAL) INSTRUMENT CLUSTER .....	23
OPERATING CONTROLS .....	29
REAR VIEW MIRRORS .....	41
<b>OPERATING INSTRUCTIONS .....</b>	<b>42</b>
BEFORE STARTING THE ENGINE .....	42
RUN IN PROCEDURE .....	43
MASTER DISCONNECT SWITCH .....	43
SERVICE INDICATOR LAMPS AND GAUGES .....	44
NORMAL STARTING PROCEDURE .....	46
COLD TEMPERATURE OPERATION .....	48
PARKING THE TRACTOR AND	
STOPPING THE ENGINE .....	51
OPERATING THE TRANSMISSION .....	53

TRIM THIS EDGE

CAB ENVIRONMENT .....	57
DRAWBAR .....	61
HEIGHT ADJUSTABLE TRAILER HITCHES .....	66
AUTO HITCH .....	70
IMPLEMENT/TRAILER DRAWBAR DIMENSIONS .....	74
TRAILER BRAKE COUPLINGS .....	75
AUXILIARY ELECTRICAL POWER SOCKETS .....	78
TRACTOR WARNING LAMPS .....	80
TOWING THE TRACTOR .....	82
HOW TO TRANSPORT THE TRACTOR .....	83
<b>FIELD OPERATION .....</b>	<b>84</b>
TRANSMISSION CREEPER OPERATION .....	84
WHEEL SLIP INDICATOR .....	85
PROGRAMMING THE INSTRUMENT CLUSTER .....	87
DISTANCE FUNCTION OPERATION .....	98
AREA FUNCTION OPERATION .....	100
REAR POWER TAKEOFF .....	102
FRONT POWER TAKEOFF OPERATION .....	109
REAR THREE POINT HITCH PREPARATION .....	111
REAR THREE POINT HITCH OPERATION .....	117
REAR THREE POINT HITCH DIAGNOSTIC DISPLAY .....	128
DIFFERENTIAL LOCK CONTROL .....	131
MECHANICAL FRONT DRIVE (MFD) OPERATION .....	136
FRONT HITCH PREPARATION .....	142
FRONT HITCH OPERATION .....	146
REMOTE HYDRAULIC VALVES .....	147
REMOTE HYDRAULICS OPERATION .....	152
IMPLEMENT CABLE ACCESS .....	157
<b>TIRES/WHEELS/SPACING/BALLAST .....</b>	<b>158</b>
TIRE AND WHEEL SERVICE .....	164
SETTING THE FRONT WHEEL TOE-IN .....	165
MFD AXLE - STEERING STOPS .....	166
MFD FRONT WHEEL TREAD POSITIONS .....	171
FRONT WHEEL BOLT MOUNTING TORQUES .....	173
FRONT TO REAR TIRE SIZE COMBINATIONS .....	174
MFD FRONT WHEEL FENDERS (If Equipped) .....	176
REAR WHEEL TREAD ADJUSTMENT .....	179
TRACTOR BALLAST .....	188

## II

TRIM THIS EDGE

LEFT PAGE

<b>LUBRICATION/MAINTENANCE .....</b>	<b>198</b>
ENVIRONMENT .....	198
PLASTIC AND RESIN PARTS .....	198
SERVICE PARTS .....	198
TOOL BOX .....	199
HOURMETER .....	199
HOOD AND SIDE PANELS .....	200
LUBRICANTS AND CAPACITIES .....	201
SERVICE CHART .....	203
10 HOURS OR DAILY .....	205
50 HOUR INTERIM SERVICE .....	208
100 HOUR INTERIM SERVICE .....	212
300 HOUR INTERIM SERVICE .....	216
600 HOUR INTERIM SERVICE .....	226
1200 HOUR MAIN SERVICE .....	233
2400 HOUR MAIN SERVICE .....	244
GENERAL MAINTENANCE .....	250
 <b>ELECTRICAL SYSTEM .....</b>	 <b>253</b>
BATTERIES .....	253
BULB AND LAMP REPLACEMENT .....	258
FUSES AND RELAYS .....	268
RELAYS .....	270
 <b>MACHINE STORAGE .....</b>	 <b>273</b>
 <b>SPECIFICATIONS .....</b>	 <b>275</b>
SPECIFICATIONS .....	275
ELECTRICAL SYSTEM .....	277
GENERAL MACHINE .....	278
TRAVEL SPEEDS .....	282
APPROXIMATE TRACTOR DIMENSIONS .....	290
APPROXIMATE TRACTOR WEIGHTS .....	292
NOISE LEVELS .....	294
 <b>DETAIL INDEX .....</b>	 <b>295</b>

TRIM THIS EDGE

III

TRIM THIS EDGE

RIGHT PAGE

TO THE OWNER

# MX150 TRACTOR With Mechanical Front Drive



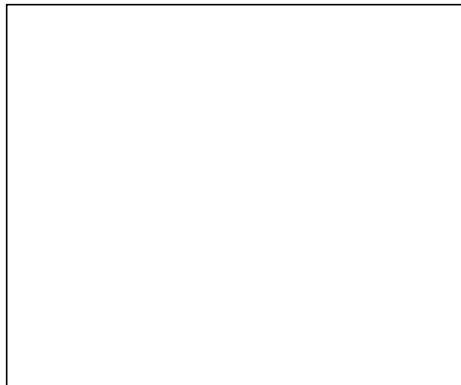
DH98C133

Dealer Stamp



**Manufacturer:**

CASE UNITED KINGDOM LIMITED  
Wheatley Hall Road  
Doncaster  
South Yorkshire  
DN2 4PG  
ENGLAND



TRIM THIS EDGE

TRIM THIS EDGE

RIGHT PAGE

## How To Use This Manual

Read this manual before you start the engine or operate your tractor. If you need any more information, see your Case dealer.

This manual contains important information about the safe operation, adjustment and maintenance of your Case Tractor. To help you find information easily this manual has been separated into chapters, as shown in the General Table of Contents. The operation of the tractor has been separated into four main chapters:

1. INSTRUMENTS/CONTROLS - Showing the location and description of all controls.
2. OPERATING INSTRUCTIONS - General information for every day tractor operation, e.g. starting/stopping the tractor, operating the transmission etc.
3. FIELD OPERATION - Information for various operations specifically for use in the field, e.g. 3 point hitch, rear PTO etc.
4. TIRES/WHEELS/SPACING/BALLAST - Adjustments for various tractor operating applications, e.g. tire pressures, tread widths etc.

The maintenance of the tractor has been separated into two main chapters:

1. LUBRICATION/MAINTENANCE - Service interval hours, and adjustments.
2. ELECTRICAL SYSTEM - General electrical service information.

**IMPORTANT:** *Refer to the Detail Index at the end of this manual for locating specific items about your machine.*

The right and left of the tractor in this manual are the same as your right and left when sitting in the tractor seat looking forward.

DO NOT operate or permit anyone to operate or service this machine until you or the other persons have read this manual. Use only trained operators who have demonstrated the ability to operate and service this machine correctly and safely.

This tractor, with standard equipment and authorized attachments, is intended to be used for farming, and related operations.

DO NOT use this machine for any application or purpose other than those described in this manual. Consult an authorized dealer or the Case Corporation on changes, additions or modifications that can be required for this machine to comply with various country regulations and safety requirements. Unauthorized modifications will cause serious injury or death. Anyone making such unauthorized modifications is responsible for the consequences.

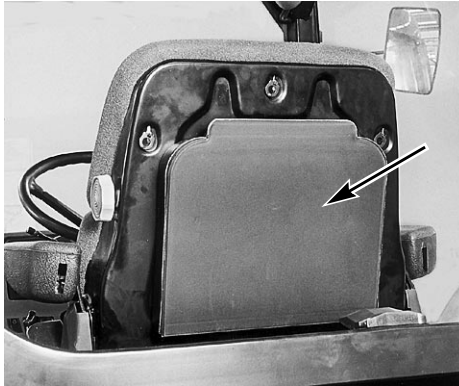
## Manual Storage

Keep the Operators Manual stored in the manual storage compartment equipped on this machine.

Make sure this manual is complete and in good condition.

Contact your dealer to obtain additional manuals or for any further information or assistance about your machine.

Your dealer has technicians with special training that know the best methods of repair and maintenance for your tractor.



DP96E064

**IMPORTANT:** *This operators manual is part of your tractor. If the tractor is sold, loaned or rented, the operators manual MUST go with it.*

TRIM THIS EDGE



## Declaration of Conformity

This tractor complies with the provisions of directive (89/336/EEC): -  
Electromagnetic Compatibility.

### EMC - Supplementary Information

#### **Safety information for the supplementary installation of electrical and electronic appliances and/or components.**

This tractor is equipped with electronic constituents and component parts whose function can be influenced by electromagnetic radiations of other appliances. Such influences can cause hazards for persons if the following safety information is not taken into account.

1. For supplementary installation of electrical and electronic appliances and/or constituents on the tractor with a connection to the onboard system, the user HAS to verify whether the installation causes disturbances to the electronics on the tractor or other constituents. This particularly applies to:

- A. Powershift Control
- B. Instrument Cluster

Also it has to be taken into account that the supplementarily installed electrical and electronic components comply with the EMC Directive 89/336/EEC in the respective current version and that they are CE marked.

2. For the supplementary installation of mobile communication systems (i.e. radio communication, mobile telephone) the following additional requirements have to be fulfilled:
  - A. Only devices with an approval complying with the valid national regulations must be installed.
  - B. The devices must be firmly installed.
  - C. The operation of portable or mobile devices within the cab of the tractor is ONLY permitted if the device has a fixed outside antenna.
  - D. The transmitting part shall be installed separately to the tractor electronics.
  - E. Installation of the antenna must be carried out by a professional and the antenna must have a good ground connection between the antenna and the tractor ground.

For the correct size cabling, installation and the maximum permissible current supply, the installation instructions of the tractor manufacturer have to be considered additionally.

TRIM THIS EDGE

## PRODUCT IDENTIFICATION AND SERIAL NUMBERS

Write your machine Model number, Product Identification Number (P.I.N.), and Serial numbers on the lines provided below. If needed, give these numbers to your Case dealer when you need parts or information for your machine.

Make a record of the numbers. Keep the record and your Manufacturers Statement of Origin in a safe place. If the machine is stolen, report the numbers to your local police.

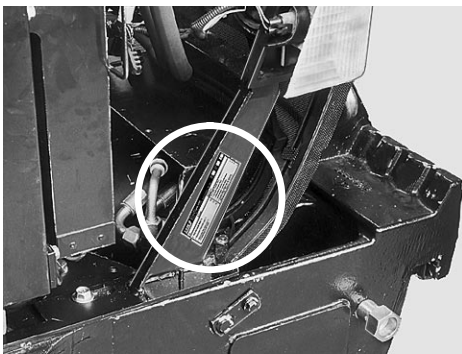
### P.I.N. Plate Details

<b>CASE III</b> Made in England Case United Kingdom Limited Wheatley Hall Road Doncaster South Yorkshire DN2 4PG		R24 ECE	77537 EEC	CE
Type	EEC Number	Product Identification Number		
<ul style="list-style-type: none"> <li>• Total Permissible Mass (*): kg</li> <li>• Permissible Front Axle Load (*): kg</li> <li>• Permissible Rear Axle Load (*): kg                      (*) Depending on the Tyres</li> </ul>		Permissible Towable Mass: <ul style="list-style-type: none"> <li>• Unbraked Towable Mass: kg</li> <li>• Independently-Braked Towable Mass: kg</li> <li>• Inertia-Braked Towable Mass: kg</li> <li>• Towable Mass Fitted With An Assisted Braking System: (Hydraulic or Pneumatic): kg</li> </ul>		

DD98K280

### Number Locations

#### TRACTOR



DP96K181

Model Number \_\_\_\_\_

Product Identification Number \_\_\_\_\_

#### TRACTOR WITH CAB



DP96J402

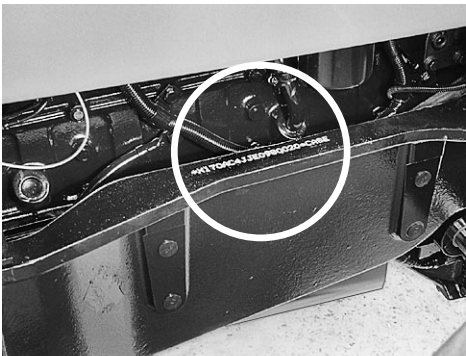
Model Number \_\_\_\_\_

Product Identification Number \_\_\_\_\_

TRIM THIS EDGE

IDENTIFICATION NUMBERS/MACHINE COMPONENTS

TRACTOR (Stamped on RH Side Rail)

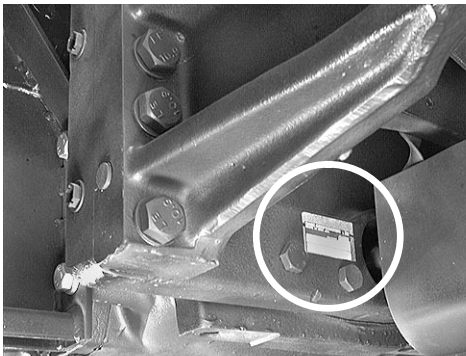


DP98E023

Model Number \_\_\_\_\_

Product Identification Number  
\_\_\_\_\_

TRANSMISSION



RD97N038

Serial Number \_\_\_\_\_

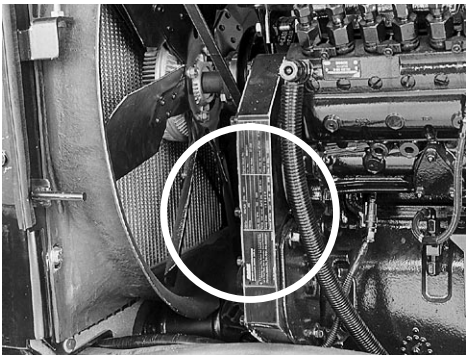
MFD AXLE



DP96H250

Serial Number \_\_\_\_\_

ENGINE



DP96J380

Serial Number \_\_\_\_\_

CAB (ROPS)



DP98J144

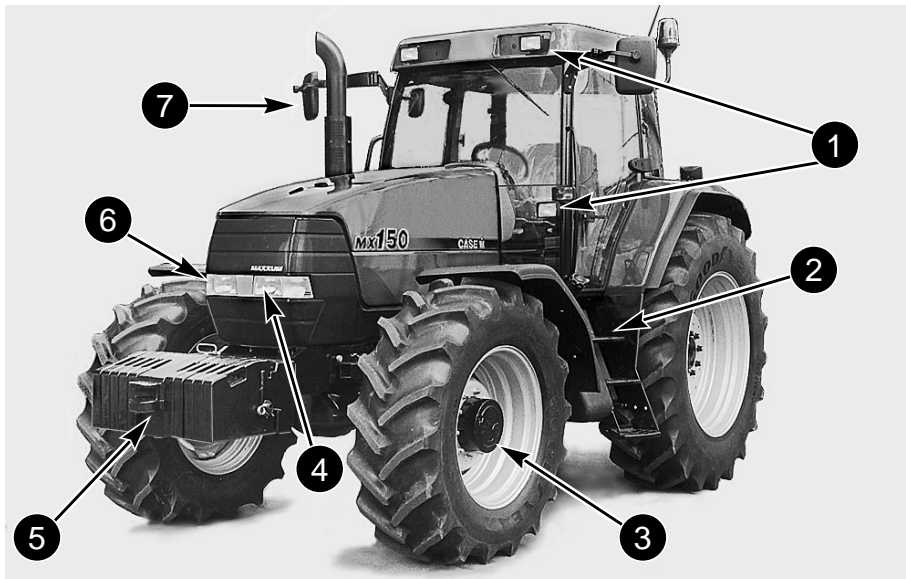
Serial Number \_\_\_\_\_

TRIM THIS EDGE

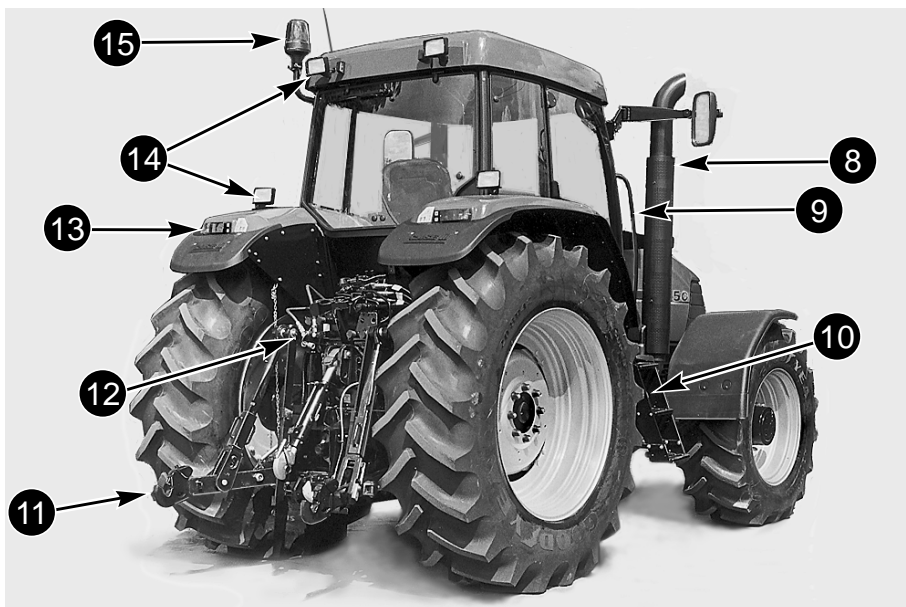
TRIM THIS EDGE

LEFT PAGE

## MACHINE COMPONENTS



DP98E040



DP98E041

- |                                  |                               |
|----------------------------------|-------------------------------|
| 1. WORK LAMPS -CAB FRONT         | 9. HANDRAIL - EACH SIDE       |
| 2. FUEL TANK                     | 10. BATTERY BOX AND TOOL BOX  |
| 3. MFD AXLE                      | 11. 3 POINT LINKAGE           |
| 4. HEADLAMPS                     | 12. HYDRAULIC COUPLINGS       |
| 5. FRONT BALLAST WEIGHTS         | 13. LINKAGE EXTERNAL CONTROLS |
| 6. WORK LAMPS - FRONT GRILLE     | 14. REAR WORK LAMPS           |
| 7. EXTENDABLE MIRROR - EACH SIDE | 15. ROTATING AMBER BEACON     |
| 8. EXTERNAL EXHAUST              |                               |

7

TRIM THIS EDGE

TRIM THIS EDGE

RIGHT PAGE



**Before operating, read and comply with the operators manual and safety instructions.**

Understand that your safety and the safety of other persons is measured by how you service, and operate this machine. Know the positions and operations of all controls before you try to operate. **MAKE SURE YOU CHECK ALL CONTROLS IN A SAFE AREA BEFORE STARTING YOUR WORK.**

READ THIS MANUAL COMPLETELY and make sure you understand the controls. All equipment has a limit. Make sure you understand the speed, brakes, steering, stability, and load characteristics of this machine before you start to operate.

The safety information given in this manual does not replace safety codes, insurance needs, federal, state and local laws. Make sure your machine has the correct equipment needed by the local laws and regulations.

CASE is continuing to work for your safety: by making tractors with better protection and by giving these rules for safe operation.



**THIS SAFETY ALERT SYMBOL INDICATES IMPORTANT SAFETY MESSAGES IN THIS MANUAL. WHEN YOU SEE THIS SYMBOL CAREFULLY READ THE MESSAGE THAT FOLLOWS AND BE ALERT TO THE POSSIBILITY OF PERSONAL INJURY OR DEATH.**

M171B

## INTENDED USE

**This Case tractor is designed solely for use in customary agricultural or similar operation (intended use).**

Use in any other way is considered as contrary to the intended use. The manufacturer accepts no liability for any damage or injury resulting from this misuse and these risks must be born solely by the user.

Compliance with and strict adherence to the conditions of operation, service and repair as specified by the manufacturer also constitutes essential elements for the intended use.

This Case tractor should be operated, serviced and repaired only by persons familiar with all its particular characteristics and acquainted with the relevant safety rules (accident prevention).

The accident prevention regulations, all other generally recognized regulations on safety and occupational medicine and the road traffic regulations must be observed at all times.

Any arbitrary modifications carried out on the tractor will relieve the manufacturer of all liability for any resulting damage or injury.



## GENERAL SAFETY AND ACCIDENT PREVENTION REGULATIONS



- In addition to the instructions contained in this operator's manual, also observe the general safety and accident prevention regulations.
- Always comply with local traffic regulations when driving on public roads.
- Before starting work, familiarize yourself with all the controls and instruments and their functions. During work is too late.
- Start the engine only from the operator's seat.
- Never attempt to start engine by shorting across the starting motor terminals as the machine may immediately start to move.
- Before moving away, always check the immediate vicinity of the machine (e.g. for children). Ensure adequate visibility.
- Never run the engine in a closed building. Proper ventilation is required.
- Clothing worn by the operator must be close-fitting. Avoid wearing loose jackets, shirts or ties.
- Handle fuel with care as it is highly flammable. Never refuel the machine in the vicinity of naked flames or sparks. Do not smoke during refuelling.
- Always stop the engine and remove the main switch key before refuelling. Fill fuel tank outdoors. Clean up any spilled fuel immediately.
- Prevent fires by keeping the machine clean.
- Take care when handling battery acid (toxic and corrosive).



## TRANSPORTING PASSENGERS



- Passengers may only be carried if a proper passenger seat is fitted.
- The carrying of passengers is otherwise not permitted.



## OPERATION



- Always adapt your ground speed to the ground conditions. Avoid making sharp turns when driving up or down slopes or when driving across the slope. Do not attempt to turn the machine with the differential lock engaged. When driving down slopes, never depress the clutch and change gear.
- Attach trailers and/or implements correctly. The operating, steering and braking behavior will be affected by attaching implements, trailers and ballast weights. Therefore ensure adequate steering and braking power.
- Observe maximum permissible axle loads, total weights and tire capacities.
- When making turns with towed or mounted implements, always take into consideration the width and inertia of the implement.

TRIM THIS EDGE

TRIM THIS EDGE

RIGHT PAGE

Thank you so much for reading.  
Please click the “Buy Now!”  
button below to download the  
complete manual.



After you pay.

You can download the most  
perfect and complete manual in  
the world immediately.

Our support email:

[ebooklibonline@outlook.com](mailto:ebooklibonline@outlook.com)