

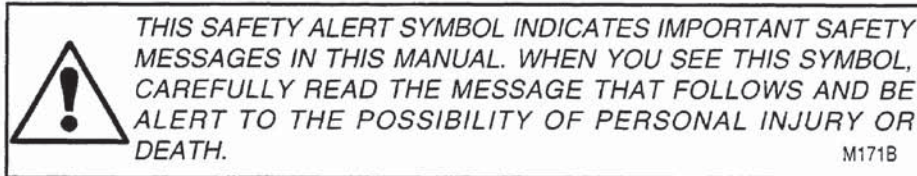


MX150 and MX170 Tractors

Operators Manual

Rac 6-2063





Safety Decals on this machine use the words **Danger, Warning or Caution**, which are defined as follows:

- **DANGER:** Indicates an immediate hazardous situation which, if not avoided, will result in death or serious injury. The color associated with Danger is RED.
- **WARNING:** Indicates a potentially hazardous situation which, if not avoided could result in serious injury. The color associated with Warning is ORANGE.
- **CAUTION:** Indicates a potentially hazardous situation which, if not avoided, may result in minor or moderate injury. It may also be used to alert against unsafe practices. The color associated with Caution is YELLOW.



WARNING

IMPROPER OPERATION OF THIS MACHINE CAN CAUSE INJURY OR DEATH. BEFORE USING THIS MACHINE, MAKE CERTAIN THAT EVERY OPERATOR:

- Is instructed in safe and proper use of the machine.
- Reads and understands the Manual(s) pertaining to the machine.
- Reads and understands ALL Safety Decals on the machine.
- Clears the area of other persons.
- Learns and practices safe use of machine controls in a safe, clear area before operating this machine on a job site

It is your responsibility to observe pertinent laws and regulations and follow Case Corporation instructions on machine operation and maintenance.

GENERAL TABLE OF CONTENTS

TO THE OWNER	1
IDENTIFICATION NUMBERS/MACHINE COMPONENTS	4
PRODUCT IDENTIFICATION AND SERIAL NUMBERS	4
SAFETY/DECALS	8
SAFETY	8
SAFETY RULES	8
HAZARDOUS CHEMICALS	11
SAFETY DECALS	12
ROLL OVER PROTECTIVE STRUCTURE (ROPS)	15
INSTRUMENTS/CONTROLS	17
INSTRUMENTS AND CONTROLS	17
OPERATORS SEAT	18
SEAT BELT	22
STEERING COLUMN ADJUSTMENT	23
DIGITAL INSTRUMENT CLUSTER	24
OPERATING CONTROLS	33
OPERATING INSTRUCTIONS	46
RUN IN PROCEDURE	47
SERVICE INDICATOR LAMPS AND GAUGES	48
NORMAL STARTING PROCEDURE	50
COLD TEMPERATURE OPERATION	52
PARKING THE TRACTOR	
AND STOPPING THE ENGINE	59
OPERATING THE TRANSMISSION	61
CAB ENVIRONMENT	65
DRAWBAR	69
IMPLEMENT DRAWBAR DIMENSIONS	73
AUXILIARY ELECTRICAL POWER SOCKETS	74
WARNING LAMPS AND SLOW	
MOVING VEHICLE (SMV) SYMBOL	77
TOWING THE TRACTOR	81
HOW TO TRANSPORT THE TRACTOR	82
FIELD OPERATION	83
WHEEL SLIP INDICATOR	84
PROGRAMMING THE INSTRUMENT CLUSTER	86
DISTANCE FUNCTION OPERATION	97
AREA FUNCTION OPERATION	98
REAR POWER TAKEOFF	99
REAR THREE POINT HITCH PREPARATION	106

TRIM THIS EDGE

REAR THREE POINT HITCH OPERATION	112
REAR THREE POINT HITCH DIAGNOSTIC DISPLAY	122
DIFFERENTIAL LOCK CONTROL	125
MECHANICAL FRONT DRIVE (MFD) OPERATION	129
FRONT HITCH PREPARATION (IF EQUIPPED)	135
FRONT HITCH OPERATION	139
REMOTE HYDRAULIC VALVES	140
REMOTE HYDRAULICS OPERATION	145
IMPLEMENT CABLE ACCESS	150
CHEMICAL TANK MOUNTING	151
TIRES/WHEELS/SPACING/BALLAST	155
TIRES, WHEELS, SPACING AND BALLAST	155
TIRE AND WHEEL SERVICE	162
FRONT AXLE AND FRONT TREAD ADJUSTMENTS	163
MECHANICAL FRONT DRIVE (MFD) TRACTORS	172
FRONT TO REAR TIRE SIZE COMBINATIONS	173
MFD FRONT WHEEL FENDERS (IF EQUIPPED)	174
SINGLE REAR WHEEL INSTALLATION	176
REAR WHEEL TREAD ADJUSTMENT	178
TRACTOR BALLAST	194
LUBRICATION/MAINTENANCE	205
LUBRICATION AND MAINTENANCE	205
HOURLMETER	206
HOOD AND SIDE PANELS	207
LUBRICANTS AND CAPACITIES	208
LUBRICATION AND MAINTENANCE CHART	210
ELECTRICAL SYSTEM	258
LAMP BULBS	262
RELAYS	274
MACHINE STORAGE	275
PUTTING THE TRACTOR INTO STORAGE	275
SPECIFICATIONS	277
ELECTRICAL SYSTEM	279
GENERAL MACHINE	280
TRAVEL SPEEDS	283
APPROXIMATE TRACTOR DIMENSIONS	291
APPROXIMATE TRACTOR WEIGHTS	293
DETAIL INDEX	295

TO THE OWNER

TO THE OWNER

Tractor with Mechanical Front Drive (MFD)



RD97N064

TRIM THIS EDGE

Two Wheel Drive Tractor



RD97B159

TO THE OWNER

Read this manual before you start the engine or operate this machine.

If you follow the instructions given in this manual, your Tractor will work well for many years.

Refer to the Detail Index at the end of this manual for locating specific items about your machine.

NOTE: *Some information, illustrations and photographs in this manual may differ to the standard equipment and accessories on your tractor. See your dealer for further information.*

Your Dealer can give you assistance with Case made parts and persons with special training that know the best methods of repair and maintenance for your tractor.

How To Use This Manual

Read this manual before you start the engine or operate your Tractor. If you need any more information, see your dealer.

IMPORTANT: *Refer to the Detail Index at the end of this manual for locating specific items about your machine.*

This manual contains important information about the safe operation, adjustment and maintenance of your Case Tractor. To help you find information easily this manual has been separated into chapters, as shown in the General Table of Contents.

1. INSTRUMENTS/CONTROLS - Showing the location and a description of all controls.
2. OPERATING INSTRUCTIONS - General information for every day Tractor operation, e.g. Starting and stopping the Tractor, operating the transmission etc.
3. FIELD OPERATION - Information for various operations specifically for use in the field, e.g. Operation of the 3 point hitch, rear PTO etc.
4. TIRES/WHEELS/SPACING/BALLAST - Adjustments for various Tractor operating applications, e.g. Tire pressures, tread widths etc.
5. LUBRICATION/MAINTENANCE - Service interval hours, and adjustments.

ELECTRICAL SYSTEM - General electrical service information. Call your Dealer if you need any assistance or information.

NOTE: *The right and left of the tractor in this manual are the same as your right and left when sitting in the tractor seat looking forward.*

TO THE OWNER

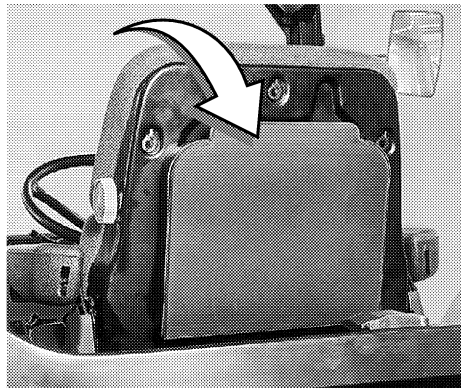
DO NOT operate or permit anyone to operate or service this machine until you or the other persons have read this manual. Use only trained operators who have demonstrated the ability to operate and service this machine correctly and safely.

This Tractor, with standard equipment and authorized attachments, is intended to be used for farming and related operations.

DO NOT use this machine for any application or purpose other than those described in this manual. Consult an authorized dealer or the Case Corporation on changes, additions or modifications that can be required for this machine to comply with various country regulations and safety requirements. Unauthorized modifications could cause serious injury or death. Anyone making such unauthorized modifications is responsible for the consequences.

Manual Storage

Keep the Operators Manual stored in the manual compartment equipped on this machine. Make sure this manual is complete and in good condition. Contact your dealer to obtain additional manuals, for any further information or assistance about your machine. Your dealer has technicians with special training that know the best methods of repair and maintenance for your tractor.



DP96E064

TRIM THIS EDGE

IMPORTANT: *This Operators Manual is part of your Tractor. If the Tractor is sold, loaned or rented, the Operators Manual MUST go with it.*

IDENTIFICATION NUMBERS/MACHINE COMPONENTS

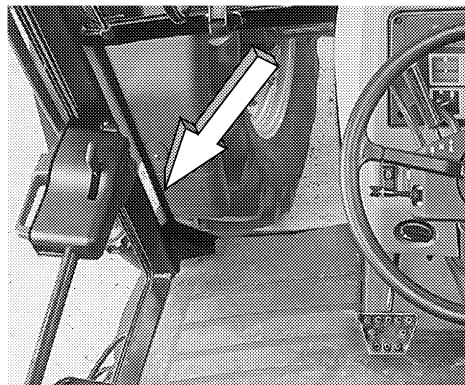
PRODUCT IDENTIFICATION AND SERIAL NUMBERS

Write your machine Model number, Product Identification Number (P.I.N.), and Serial numbers on the lines provided below. If needed, give these numbers to your Case dealer when you need parts or information for your machine.

Make a record of the numbers. Keep the record and your Manufacturers Statement of Origin in a safe place. If the machine is stolen, report the numbers to your local law enforcement agency.

Number Locations

TRACTOR

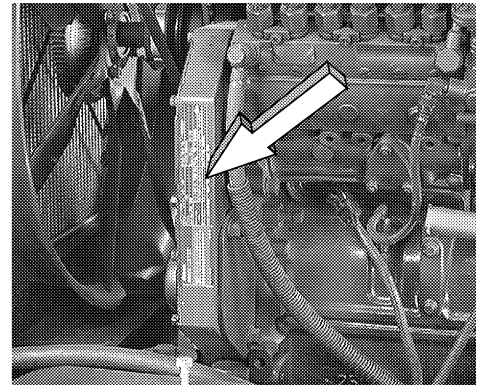


DP96J402

Model Number _____

Product Identification Number _____

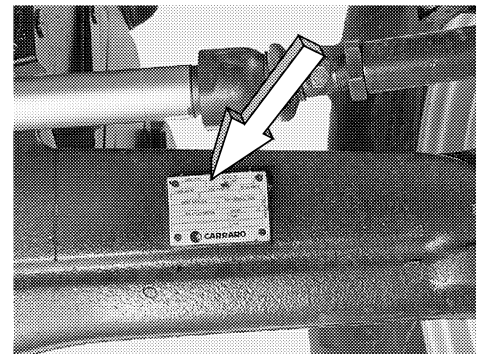
ENGINE



DP96J380

Serial Number _____

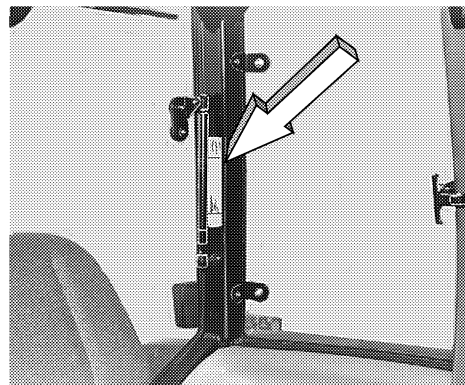
MFD AXLE



DP96H250

Serial Number _____

CAB



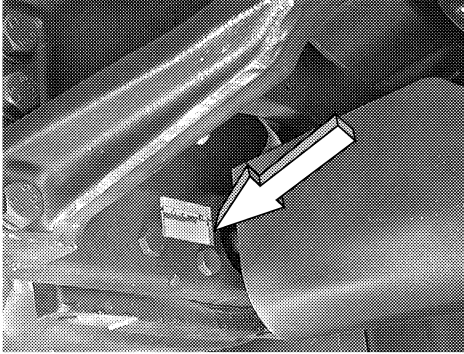
DD96M083

Serial Number _____

TRIM THIS EDGE

IDENTIFICATION NUMBERS/MACHINE COMPONENTS

TRANSMISSION



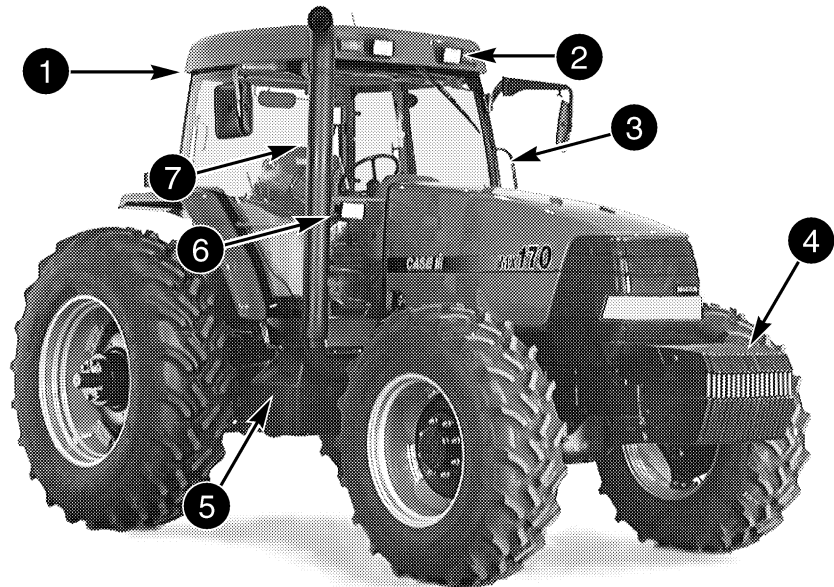
DP96J392

Serial Number _____

TRIM THIS EDGE

IDENTIFICATION NUMBERS/MACHINE COMPONENTS

MACHINE COMPONENTS



TRIM THIS EDGE

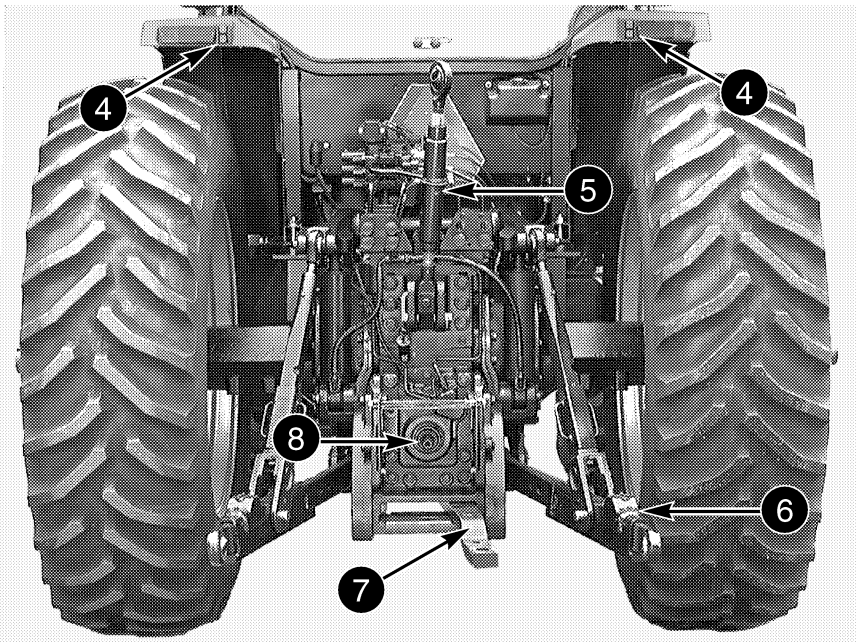
RD97B161

- | | |
|--------------------------|-------------------------|
| 1. ROPS CAB | 5. BATTERY BOX |
| 2. ROOF FRONT WORK LAMPS | 6. LOWER CAB WORK LAMPS |
| 3. HAND RAIL | 7. EXHAUST MUFFLER |
| 4. FRONT BALLAST WEIGHTS | |

IDENTIFICATION NUMBERS/MACHINE COMPONENTS



RD97B156



RD96N062

- | | |
|---|-------------------------------|
| 1. REAR VIEW MIRRORS | 5. TOP LINK - 3 POINT HITCH |
| 2. FUEL FILLER CAP | 6. LOWER LINK - 3 POINT HITCH |
| 3. WORK LAMPS (OUTER), HEAD LAMPS (INNER) | 7. DRAWBAR |
| 4. EXTERNAL CONTROLS - 3 POINT HITCH | 8. REAR PTO |

TRIM THIS EDGE

SAFETY/DECALS

SAFETY

Before operating, read and comply with this operators manual and safety instructions.

Understand that your safety and the safety of other persons is measured by how you service, and operate this machine. Know the positions and operations of all controls before you try to operate. **MAKE SURE YOU CHECK ALL CONTROLS IN A SAFE AREA BEFORE STARTING YOUR WORK.**

READ THIS MANUAL COMPLETELY and make sure you understand the controls. All equipment has a limit. Make sure you understand the speed, brakes, steering, stability, and load characteristics of this machine before you start to operate.

The safety information given in this manual does not replace safety codes, insurance needs, federal, state and local laws. Make sure your machine has the correct equipment needed by the local laws and regulations.

CASE is continuing to work for your safety: by making tractors with better protection and by giving these rules for safe operation.



WARNING: THIS SAFETY ALERT SYMBOL INDICATES IMPORTANT SAFETY MESSAGES IN THIS MANUAL. WHEN YOU SEE THIS SYMBOL, CAREFULLY READ THE MESSAGE THAT FOLLOWS AND BE ALERT TO THE POSSIBILITY OF PERSONAL INJURY OR DEATH.

M171B



SAFETY RULES



- Before starting the engine, be sure all operating controls are in neutral. This will eliminate accidental movement of the machine or start up of power driven equipment. R106C
- Operate controls only when seated in the Operators seat. R137
- Securely fasten your seat belt. Your tractor is equipped with a ROPS cab for your protection. The seat belt can help insure your safety if it is used and maintained. Never wear a seat belt loosely or with slack in the belt system. Never wear the belt in a twisted condition or pinched between the seat structural members. R271
- A frequent cause of personal injury or death is persons falling off and being run over. Do not permit others to ride. Only one person - the operator - should be on the machine when it is in operation. R115A

TRIM THIS EDGE

SAFETY/DECALS

- Before leaving the tractor, stop the engine and remove the key from the key switch, put all controls in NEUTRAL and apply the park brake.
- Stay off slopes too steep for safe operation. Shift down before you start up or down a hill with a heavy load. Avoid "free wheeling". R123
- Do not drive on roads, or at high speed anywhere, with the differential lock engaged. Difficult steering will occur, and can result in an accident. In field operation, use the differential lock for traction improvement, but release for turning at row ends. R116
- Travel speed should be such that complete control and machine stability is maintained at all times. Where possible, avoid operating near ditches, embankments and holes. Reduce speed when turning, crossing slopes, and on rough, slick, or muddy surfaces. R109A
- Collision of high speed road traffic and tractors or implements can cause personal injury or death. On roads, use flasher/lights according to local laws. Keep SMV emblem visible. Pull over to let faster traffic pass. Slow down and signal before turning off.
- Brake pedals must be locked together for road travel. This will insure uniform brake application and maximum stopping ability. R112
- Make sure that the weight of a trailed vehicle that is not equipped with brakes, NEVER EXCEEDS the weight of the machine that is towing the vehicle. Stopping distance increases with increasing speed as the weight of the towed load increases, especially on hills and slopes. R114A
- Extra weight and bad traction conditions such as mud or ice increase your stopping distance. Remember that liquid in the tires, weights on the machine or wheels, tanks filled with fertilizer, herbicides or insecticides; all these add weight and increase the distance you need to stop. R113A
- Rear upset can result if pulling from wrong location on tractor. Hitch only to the drawbar. Use 3 point hitch only with the implements designed for its use -not as a drawbar. R119
- PTO driven machinery can cause serious injury. Before working on or near the PTO shaft, or servicing or clearing the driven machine, put the PTO lever in the DISENGAGE position and STOP the engine. R154
- Whenever a PTO driven machine is in operation, the PTO guard must be in place for most operations to prevent injury to the operator or bystanders. Where attachments, such as pumps, are installed on the PTO shaft (especially if the tractor PTO guard is moved upward or removed) extended shielding equivalent to the PTO guard must be installed with the attachment. Install the PTO guard to its original position immediately when the attachment is removed. R273

TRIM THIS EDGE

SAFETY/DECALS

- When doing stationary PTO work and dismounting from the tractor with the PTO running, keep clear of all moving parts as they are a potential safety hazard. R127
- Never operate the engine in a closed building. Proper ventilation is required under all circumstances. R142
- Never refuel the machine when the engine is hot or running. Never smoke while refuelling. R139B
- Check and service cooling system according to maintenance instructions.
- Hot coolant can spray out if radiator cap is removed while the system is hot. To remove radiator cap, let system cool, turn to first notch, then wait until all pressure is released. Scalding can result from fast removal of radiator cap. R141
- Hydraulic oil or diesel fuel leaking under pressure can penetrate the skin and cause infection or other injury.

To Prevent Personal Injury:

Relieve all pressure, before disconnecting fluid lines.

Before applying pressure, make sure all connections are tight and components are in good condition. Never use your hand to check for suspected leaks under pressure. Use a piece of cardboard or wood for this purpose. If injured by leaking fluid, see your doctor immediately. R149

- Battery explosion and/or damage to electrical components can result from improper connection of booster batteries or charger. Connect positive to positive and negative to negative. Externally, battery acid can cause burns and blindness, and taken internally is poison. R146
- It is good practice to carry a fire extinguisher on the machine. Be sure that the extinguisher is properly maintained and be familiar with its proper use.

Thank you so much for reading.
Please click the “Buy Now!”
button below to download the
complete manual.



After you pay.

You can download the most
perfect and complete manual in
the world immediately.

Our support email:

ebooklibonline@outlook.com