

CASE CVX 120 / CVX 130 / CVX 150 / CVX 170

CVX 120, CVX 130 CVX 150, CVX 170 Tractors

from product identification DBD0080555

Operating Manual

Sva 6-21131

S.R 2.0.



CASE
CVX 120, CVX 130
CVX 150, CVX 170
Tractors

Sva 6-21131

TRIM THIS EDGE

TRIM THIS EDGE

RIGHT PAGE



THIS WARNING SYMBOL POINTS TO IMPORTANT SAFETY NOTES IN THIS MANUAL. WHEN THIS SYMBOL APPEARS, THE SUBSEQUENT NOTES ARE TO BE READ THROUGH CAREFULLY IN ORDER TO MAKE YOU AWARE OF POSSIBLE DANGER OF INJURY, EVEN RESULTING IN DEATH. M171B

The safety labels on this machine use the words **danger**, **warning** or **caution**. These terms are defined as follows:

- **DANGER:** This indicates an immediate hazardous situation that, if not avoided, will result in death or serious injury. The colour associated with Danger is RED.
- **WARNING:** This indicates a potentially hazardous situation that, if not avoided, could result in death or serious injury. The colour associated with Warning is ORANGE.
- **CAUTION:** This indicates a potentially hazardous situation that, if not avoided, may result in minor or moderate injury. It may also be used to alert against unsafe practices. The colour associated with Caution is YELLOW.

TRIM THIS EDGE



WARNING

OPERATING THIS MACHINE INCORRECTLY CAN LEAD TO INJURY OR DEATH. MAKE SURE THAT EACH DRIVER HAS MET THE FOLLOWING REQUIREMENTS BEFORE USING THIS MACHINE:

- He must have been instructed in the safe, correct use of the machine.
- He must have read and understood the manual (manuals) referring to the machine.
- He must have read and understood ALL safety labels on the machine.
- He has turned away all persons from the working area.
- He must have studied and practiced the safe usage of the machines control elements in a safe and open training field before using this machine in the working environment.

It is your responsibility to pay attention to the relevant laws and guidelines and the notes of Case Steyr Landmaschinentechnik GmbH concerning working with this machine and its subsequent servicing.

Sva 6-21131EN

© 2000 Case Steyr Landmaschinentechnik Ges.m.b.H

January 2001

Case and Steyr are registered trademarks of Case Steyr Landmaschinentechnik Ges.m.b.H.

TRIM THIS EDGE

LEFT PAGE

TABLE OF CONTENTS

TO THE USER	1
AGGREGATE/SERIENNUMMERN	4
PRODUCT IDENTIFICATION AND SERIAL NUMBER	4
SAFETY/SAFETY PLATES	6
SAFETY	6
CORRECT USAGE	6
GENERAL RULES FOR SAFETY AND FOR THE PREVENTION OF ACCIDENTS	7
CARRIAGE OF PASSENGERS	7
DRIVING	8
LEAVING THE TRACTOR	8
ATTACHMENTS	8
PTO SHAFT OPERATION	8
MAINTENANCE AND OTHER WORK	9
DANGEROUS CHEMICALS	9
BASIC RULES	9
SAFETY LABELS	10
INSTRUMENTS/OPERATING CONTROLS	12
CLIMBING ONTO THE TRACTOR	12
DRIVER'S SEAT	13
OPERATING CONTROLS	25
DRIVING	51
BEFORE STARTING THE ENGINE	51
BATTERY MASTER SWITCH (If fitted)	52
DRIVING SEAT SWITCH	52
INDICATOR LAMPS AND COMBINATION INSTRUMENT FOR OPERATING STATUS	53
STANDARD STARTING PROCEDURE	54
STOPPING THE TRACTOR AND STOPPING THE ENGINE	56
STANDSTILL CONTROL	57
PARKING INTERLOCK	57
OPERATING THE TRACTOR AT LOW TEMPERATURES (WINTER OPERATION)	58
HINTS FOR DRIVING	61
OPERATING THE TRANSMISSION	63
CAB VENTILATION / HEATING	70
HEIGHT-ADJUSTABLE TOWBARS (If fitted)	73
ADJUSTABLE TOWBAR	76

I

TRIM THIS EDGE

RIGHT PAGE

TRIM THIS EDGE

AUTO PICK UP HITCH WITH HOOK hydraulically extendable (If fitted)	81
DIMENSIONS FOR TRAILER/ATTACHMENT TOW-BAR EYES	85
CONNECTIONS FOR TRAILER BRAKE LINES (If fitted)	86
ADDITIONAL ELECTRICAL SOCKET	88
HAZARD WARNING LAMPS	93
RECOVERY	95
TRANSPORTING THE TRACTOR	96
OPERATIONAL USE	97
OPERATING THE STEYR FRONT PTO SHAFT (if fitted)	104
PREPARING THE REAR THREE-POINT LINKAGE	105
OPERATING THE ELECTRONIC LIFTING GEAR CONTROL (EHR)	116
PREPARING THE STEYR FRONT-END LIFTING GEAR (if fitted)	125
WORKING WITH THE STEYR FRONT-END LIFTING GEAR	126
AUXILIARY CONTROL UNITS	128
OPERATING THE AUXILIARY CONTROL UNITS	132
DIFFERENTIAL LOCK	136
OPERATING THE 4-WHEEL DRIVE	138
OPERATING THE FRONT AXLE INDEPENDENT SUSPENSION (if fitted)	139
FASTENING BRACKET FOR EXTERNAL LEVERS	141
TYRES/WHEELS/TRACK WIDTH/BALLAST	142
ADJUSTING THE FRONT AXLE AND THE FRONT AXLE TRACK WIDTH	144
ADJUSTING THE FRONT AXLE TRACK	145
ADJUSTING THE REAR AXLE TRACK WIDTH	147
4-WHEEL DRIVE TYRE COMBINATIONS	151
FRONT WHEEL MUDGUARD – 4-WHEEL DRIVE TRACTOR (If fitted)	152
TRACTOR BALLAST	153
LUBRICATION / MAINTENANCE	156
ENVIRONMENT	156
PLASTIC AND FIBRE-GLASS RE-INFORCED PARTS	156
TOOL BOX	156
OPERATING HOURS COUNTER	157
ENGINE HOOD	158
LUBRICATION AND FILLING LEVELS	159
DAILY INSPECTIONS	167
ENGINE MAINTENANCE	172
ENGINE/TRANSMISSION UNIT MAINTENANCE	181
HYDRAULICS MAINTENANCE	183
STEERING MAINTENANCE	184
FRONT AXLE MAINTENANCE	185
BRAKE MAINTENANCE	188

TOWBAR MAINTENANCE	189
ELECTRICAL MAINTENANCE	190
FRONT PTO-SHAFT MAINTENANCE	191
FRONT HYDRAULIC MAINTENANCE	192
GENERAL MAINTENANCE	192
ELECTRICAL SYSTEM	195
BATTERY	195
REPLACING BULBS AND LAMPS	198
FUSES and RELAYS	207
TECHNICAL DATA	212
ENGINE	212
ELECTRICAL SYSTEM	214
GENERAL VEHICLE DATA	215
VEHICLEWEIGHTS	219
VEHICLE DIMINSIONS	220
INDEX	221

TRIM THIS EDGE

CASE CVX 150 TRACTOR



SD00F226

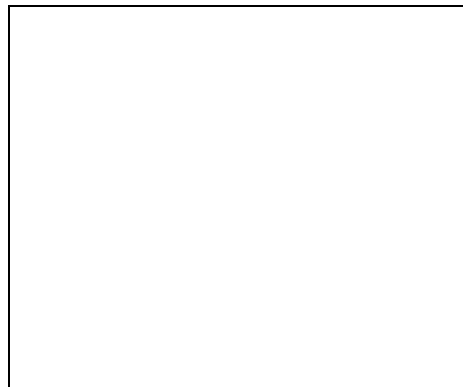
TRIM THIS EDGE

Dealers stamp



Manufacturer:

CASE STEYR
Landmaschinentechnik Ges.m.b.H.
Steyrerstrasse 32
A-4300 St. Valentin
AUSTRIA



TRIM THIS EDGE

RIGHT PAGE

TO THE USER

How to use this manual

Read this manual before operating your tractor. Call your retailer for further information.

This manual contains important information concerning working, setting up and maintaining your Case Steyr tractor safely. This manual is divided into individual chapters corresponding to the contents so that you can easily find information. Information concerning the tractor is divided into 4 chapters:

1. INSTRUMENTS AND CONTROLS – The layout of all controls is shown here.
2. WORK NOTES – General notes on daily work with the tractor e.g. starting up/turning off the tractor, operating the transmission etc.
3. OPERATIONAL USE – This chapter contains notes on various work uses, specifically for use with implements, e.g. three-point linkage , rear PTO etc.
4. TYRES/WHEELS/TRACK WIDTHS/BALLASTING – Settings for various tractor working scenarios are described here, e.g. tyre pressures, track widths etc.

Tractor maintenance is divided into two chapters:

1. LUBRICATION/MAINTENANCE – Regular maintenance intervals.
2. ELECTRICAL LAYOUT – General maintenance notes on electrics.

IMPORTANT: See the alphabetical index at the end of the manual in order to find a particular item in the manual concerning your machine.

Position descriptions such as in front, behind, right and left are understood to be as seen from the tractor's seat, facing in a forward direction.

Do NOT allow yourself or any other person to drive the machine or carry out maintenance work without having first read the manual. Only employ trained drivers who have shown their ability to correctly and safely work and maintain the machine.

With its standard equipment and licensed fittings, this tractor is intended for use in agriculture etc.

Do NOT use the machine for any other purpose other than those described in the manual. Get in touch with an authorised retailer or the Case Steyr Company concerning changes, additions or modifications which could be necessary for your machine to fulfil the relevant national guidelines and safety requirements. Release or approval from the manufacturer is required for custom-built bodies. Unapproved changes render product liability void.

TRIM THIS EDGE

Keeping your manual safe



SD98B028

Keep the operating manual in the compartment provided for that purpose on your tractor.

Ensure that this manual is complete and remains in good condition.

Ask your retailer for additional manuals or further information as well as support for your machine. Your retailer employs specially trained engineers who know the best method of repair and maintenance for your machine.

IMPORTANT: *This operating manual is part of your tractor. If the tractor is sold or hired out, the operating manual MUST be handed over with it.*

Declaration of conformity

This tractor meets the EC Electromagnetic compatibility guideline (89/336/EEC)

– and is marked with CE.

Type approval

The tractors are road traffic law approved in all EC countries with the following overall type approvals, with a designed speed of up to 40 km/h.

e1 - 74/150 - 0144

in the respective valid amendment state

Over and above this, national approvals exist for versions with a measured speed of up to 50 km/h.

Software version 2.0

TRIM THIS EDGE

AGGREGATE/SERIENNUMMERN

PRODUCT IDENTIFICATION AND SERIAL NUMBER

Fill in the machine type designation, the product identification number (P.I.N.) and serial number on the corresponding line below. If required, pass on this numerical data to the Case-Steyr retailer when ordering parts or making inquiries.

Write down the identification number. Records and the vehicle log book must be kept in a safe place. If the machine is stolen, these code numbers must be reported to the local police station.

Type plate details



CASE Germany GmbH

D - 69176 Heidelberg

TYP: 9090

EWG-Nummer: e1-74/150-0144

Identifizierungsnummer: DBD0080001

Zugmaschine:

zul. Gesamtgewicht*: 9500 bis kg

zul. Achslast vorne*: 4400 bis kg

zul. Achslast hinten*: 7500 bis kg

*) abhängig von der montierten Bereifung

 3

Technisch zulässige Anhängelast:

ungebremste Anh.last: kg

Anh.last f. Unabh. Bremsg: kg

auflaufgebremste Anh.last: kg

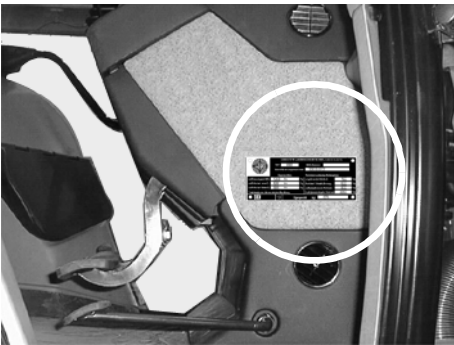
hydr./pneumat.gebr. Anh.last: kg

* weitere zul. Gewichte siehe Ziffer 33 Fzg.brief

SS00E061

Arrangement of individual numbers

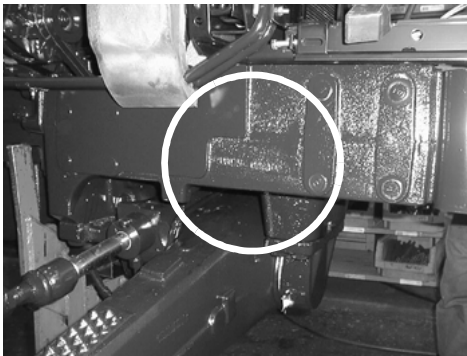
TRACTOR



SD00F114

Type designation _____
Product identification number _____

TRACTOR



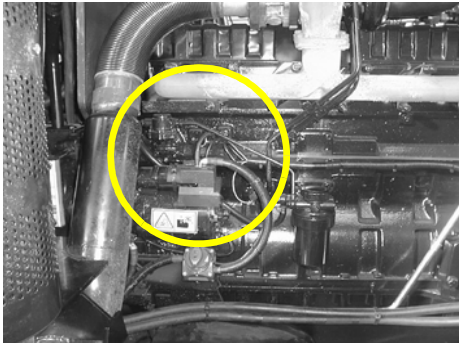
SD98B035

Type designation _____
Product identification number _____

TRIM THIS EDGE

AGGREGATE/SERIENNUMMERN

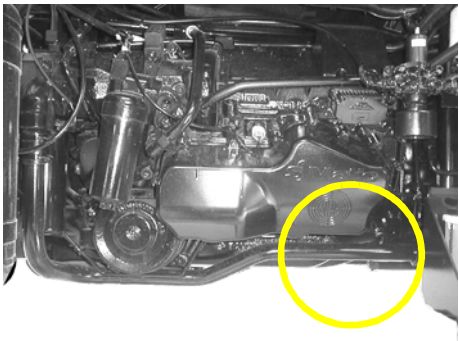
ENGINE



SD00A019

Serial No. _____

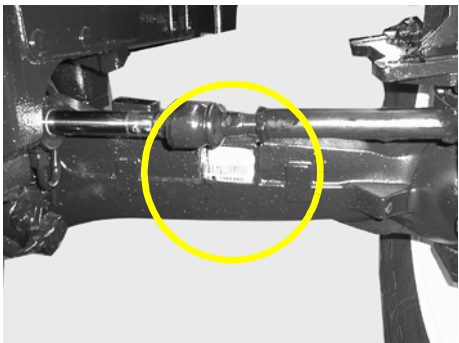
ENGINE/TRANSMISSION UNIT



SD00G003

Serial No. _____

4-WHEEL DRIVE (if fitted)



SD98B037

Serial No. _____

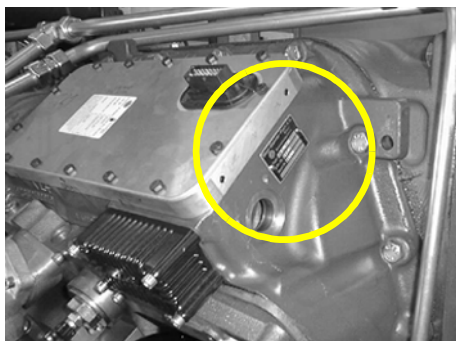
CAB



SD98B036

Serial No. _____

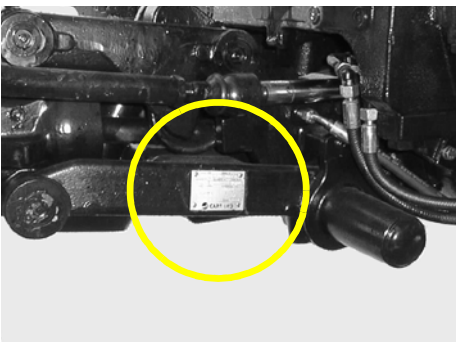
CATRIDGE



SD99K006

Serial No. _____

4-WHEEL DRIVE independent suspension (if fitted)



SD98B059

Serial No. _____

TRIM THIS EDGE

TRIM THIS EDGE

RIGHT PAGE

SAFETY/SAFETY PLATES



Read and observe the operating instructions and safety notes and before starting.

You should be aware that your own safety and the safety of others depends on how the machine is serviced and operated. You must become acquainted with the arrangement and function of all control elements before attempting to work with the machine. **ALL CONTROL ELEMENTS MUST BE TESTED IN A SAFE AREA BEFORE STARTING WORK.**

READ THE MANUAL THOROUGHLY and ensure that you understand the purpose and function of the control elements. Each device has certain restrictions. Before work is begun, ensure that the speed, braking effect, maneuverability, stability and load ratio of this machine has been correctly estimated.

Safety regulations, insurance requirements and national, regional and local law is not repaced by the safety notes in this manual. Ensure that the machine is properly equipped according to the respective laws and guidelines.

It is allowed to modify the vehicle within the framework of technical values under compliance with possible modification guidelines in force, type relevant modifications must be made known to the authorities concerned.

CASE-STEYR strives towards improvements in safety: This occurs through the production of tractors with better and better safety facilities and through notes on the rules for their safe operation.



THIS SAFETY WARNING SYMBOL INDICATES IMPORTANT SAFETY NOTES IN THIS MANUAL. WHEN THIS SYMBOL APPEARS, THE SUBSEQUENT NOTES MUST BE READ THOROUGHLY AND YOU SHOULD BE AWARE OF POSSIBLE DANGER OF INJURY AND POSSIBLY DEATH.

M171B

CORRECT USAGE

This tractor is designed mainly for use in agricultural, communal or forestry work (correct usage). The tractor's function is mainly in its pulling power and to pull, push, carry or operated particular implements, machines or trailers.

Usage above and beyond this is considered as incorrect. The manufacturer will not accept responsibility for any resulting damages. The risk is carried solely by the user.

Strict adherence to the operating, service and maintenance requirements stipulated by the manufacturer also fall under correct usage.

This Case-Steyr tractor may only be used, serviced and maintained by capable persons who are familiar with the particular properties of the machine and who have been instructed in the corresponding safety regulations (accident prevention).

SAFETY/SAFETY PLATES

Accident prevention regulations and other general recognised safety technical, industrial health and road safety guidelines must be adhered to.

Alterations made to the machine without the manufacturer's express, written permission, will render the guarantee null and void.



GENERAL RULES FOR SAFETY AND FOR THE PREVENTION OF ACCIDENTS



- In addition to the instructions contained in these operating instructions, general safety and accident prevention regulations must be observed.
- Observe the relevant regulations when using public traffic areas.
- Familiarisation with all mechanisms and control elements and with their functions is required before starting work. It will be too late for this during the actual work.
- Before starting, check the immediate vicinity of the machine (e.g. children). Ensure you're vision is not impaired.
- Never leave the engine running in enclosed areas. Sufficient ventilation is required.
- Handle fuel with great care. Increased fire hazard. Never refuel close to open flames or flying sparks. Do not smoke when refueling.
- Switch off the engine and remove the ignition key when refueling. Do not refuel in enclosed areas. Wipe off spilt fuel immediately.
- Keep the engine clean to avoid fire hazards.
- Handle battery acids with extreme caution (toxic and caustic).



CARRIAGE OF PASSENGERS



- Passengers may only carried if a regulation passenger seat is fitted.
- The carriage of persons is not permitted beyond this.
- Children may only be carried if special seats are provided (available on the open market).

TRIM THIS EDGE

TRIM THIS EDGE

RIGHT PAGE

Thank you so much for reading.
Please click the “Buy Now!”
button below to download the
complete manual.



After you pay.

You can download the most
perfect and complete manual in
the world immediately.

Our support email:

ebooklibonline@outlook.com