

# **Multi-Trac**

## **CASE CS78, CS78a, CS86a, CS94a**

**Sva 6-22381**

TRIM THIS EDGE

TRIM THIS EDGE

RIGHT PAGE



*THIS WARNING SYMBOL POINTS TO IMPORTANT SAFETY NOTES IN THIS MANUAL. WHEN THIS SYMBOL APPEARS, THE SUBSEQUENT NOTES ARE TO BE READ THROUGH CAREFULLY IN ORDER TO MAKE YOU AWARE OF POSSIBLE DANGER OF INJURY, EVEN RESULTING IN DEATH.*

M171B

The safety labels on this machine uses the words **danger**, **warning** or **caution**. These terms are defined as follows:

- **DANGER:** This indicates an immediately impending danger situation which, if not avoided, can lead to death or serious injury. The colour allocated to the term "danger" is RED.
- **WARNING:** This term indicates a possible impending danger situation which, if not avoided, can lead serious injury. The colour connected to the term "warning" is ORANGE.
- **CAUTION:** This term indicates a possible impending danger situation which, if not avoided, can lead to slight or medium injuries. The term can also be used to warn against unsafe practices. The colour connected to the term "caution" is YELLOW.



# WARNING

OPERATING THIS MACHINE INCORRECTLY CAN LEAD TO INJURY OR DEATH. MAKE SURE THAT EACH DRIVER HAS MET THE FOLLOWING REQUIREMENTS BEFORE USING THIS MACHINE:

- He must have been instructed in the safe, correct use of the machine.
- He must have read and understood the manual (manuals) referring to the machine.
- He must have read and understood ALL safety labels on the machine.
- He has turned away all persons from the working area.
- He must have studied and practiced the safe usage of the machines control elements in a safe and open training field before using this machine in the working environment.

It is your responsibility to pay attention to the relevant laws and guidelines and the notes of CASE-STEYR Landmaschinentechnik GmbH regarding working with and servicing this machine.

Sva 6-22381 ENG

January 2000

© 1999 CASE-STEYR Landmaschinentechnik GmbH

Case and Steyr are registered trademarks of CASE-STEYR Landmaschinentechnik GmbH

TRIM THIS EDGE

TRIM THIS EDGE

LEFT PAGE

# CONTENTS

<b>TO THE USER .....</b>	<b>1</b>
<b>AGGREGATE/SERIAL NUMBERS.....</b>	<b>4</b>
PRODUCT IDENTIFICATION AND SERIAL NUMBER.....	4
SAFETY .....	6
CORRECT USAGE.....	6
<b>SAFETY/SAFETY PLATES.....</b>	<b>6</b>
GENERAL RULES FOR SAFETY AND FOR THE PREVENTION OF ACCIDENTS .....	7
CARRIAGE OF PASSENGERS .....	7
DRIVING .....	8
LEAVING THE TRACTOR.....	8
ATTACHMENTS.....	8
PTO SHAFT OPERATION.....	8
MAINTENANCE AND OTHER WORK .....	9
DANGEROUS CHEMICALS.....	9
BASIC RULES .....	9
SAFETY LABELS .....	10
<b>INSTRUMENTS/OPERATING CONTROLS.....</b>	<b>17</b>
CLIMBING ONTO THE TRACTOR.....	17
DRIVER'S SEAT.....	18
INSTRUMENT PANEL.....	29
OPERATING CONTROLS.....	36
BEFORE STARTING THE ENGINE .....	60
<b>DRIVING .....</b>	<b>60</b>
BATTERY MASTER SWITCH (if fitted).....	61
SAFETY SWITCH .....	61
INDICATOR LAMPS AND COMBINATION INSTRUMENT FOR OPERATING STATUS.....	62
STANDARD STARTING PROCEDURE .....	63
OPERATING THE TRACTOR AT LOW TEMPERATURES (WINTER OPERATION).....	65
HINTS FOR DRIVING.....	68
OPERATING THE TRANSMISSION .....	70
STOPPING THE TRACTOR AND STOPPING THE ENGINE.....	75
CAB VENTILATION/HEATING .....	77

TRIM THIS EDGE

I

TRIM THIS EDGE

RIGHT PAGE

ADJUSTABLE TOWBAR.....	81
HEIGHT-ADJUSTABLE TOWBAR	
(if fitted) .....	85
AUTO HITCH WITH HOOK AND ADJUSTABLE TOWBAR	
(if fitted) .....	89
ADIMENSIONS FOR TRAILER/	
ATTACHMENT TOWBARS.....	93
CONNECTIONS FOR TRAILER BRAKE LINES	
(if fitted) .....	94
ADDITIONAL ELECTRICAL SOCKET .....	96
TRACTOR WARNING LAMPS.....	99
TOWING AWAY .....	101
TRANSPORTING THE TRACTOR.....	102
 <b>OPERATIONAL USE.....</b>	 <b>103</b>
REAR POWER TAKE OFF (PTO) SHAFT .....	104
OPERATING THE STEYR FRONT PTO	
(if fitted) .....	113
PREPARING THE REAR THREE-POINT LINKAGE .....	115
OPERATING THE LIFTING GEAR .....	126
STEYR FRONT END LIFTING GEAR	
(if fitted) .....	137
AUXILIARY CONTROL UNITS.....	141
OPERATING THE AUXILIARY CONTROL UNITS .....	145
DIFFERENTIAL LOCK .....	152
OPERATING THE 4-WHEEL DRIVE	
(if fitted) .....	155
FASTENING BRACKET FOR EXTERNAL	
LEVERS AND DEVICES.....	157
DIGITAL TRACTOR METER SPEED CALIBRATION.....	160
 <b>TYRES/WHEELS/TRACK WIDTHS/BALLAST .....</b>	 <b>161</b>
ADJUSTING THE FRONT AXLE AND THE FRONT AXLE TRACK.....	163
ADJUSTING THE FRONT AXLE TRACK .....	164
ADJUSTING THE REAR AXLE TRACK WIDTH .....	170
4-WHEEL DRIVE – TYRE COMBINATIONS .....	174
FRONT WHEEL MUDGUARD – 4-WHEEL DRIVE TRACTOR	
(if fitted) .....	176
TRACTOR BALLAST.....	177

<b>LUBRICATION/MAINTENANCE .....</b>	<b>179</b>
ENVIRONMENT .....	179
PLASTIC AND FIBRE-GLASS RE-INFORCED PARTS.....	179
TOOL BOX.....	179
OPERATING HOURS COUNTER .....	180
ENGINE HOOD .....	181
LUBRICATION AND FILLING LEVELS .....	182
LUBRICATION/MAINTENANCE PLAN .....	187
ENGINE MAINTENANCE .....	195
POWER UNIT MAINTENANCE .....	205
HYDRAULICS/STEERING MAINTENANCE .....	206
FRONT AXLE MAINTENANCE .....	208
FRONT PTO-SHAFT MAINTENANCE .....	210
BRAKE MAINTENANCE.....	211
TOWBAR MAINTENANCE .....	212
ELECTRICAL MAINTENANCE.....	213
FRONT HYDRAULIC MAINTENANCE.....	214
GENERAL MAINTENANCE.....	215
BATTERY .....	218
 <b>ELECTRICAL SYSTEM.....</b>	 <b>218</b>
REPLACING BULBS AND LAMPS.....	221
FUSES.....	229
 <b>TECHNICAL DATA .....</b>	 <b>236</b>
ELECTRICAL SYSTEM.....	238
GENERAL VEHICLE DATA.....	239
DRIVING SPEEDS .....	244
VEHICLE WEIGHTS.....	250
VEHICLE DIMENSIONS.....	251
 <b>INDEX .....</b>	 <b>253</b>

TRIM THIS EDGE

III

TRIM THIS EDGE

RIGHT PAGE

# CASE Multi-Trac TRACTOR CS94a

with 4-wheel drive



SD98N016

TRIM THIS EDGE



Dealers stamp

MANUFACTURER:

CASE-STEYR  
Landmaschinentechnik GmbH  
Steyrerstrasse 32  
A-4300 St. Valentin  
AUSTRIA



TRIM THIS EDGE

RIGHT PAGE

## How to use this manual

This manual must be read before starting up the engine or working with your tractor. Call your retailer for further information.

This manual contains important information concerning working, setting up and maintaining your Case Steyr tractor safely. This manual is divided into individual chapters corresponding to the contents so that you can easily find information. Information concerning the tractor is divided into 4 chapters:

1. INSTRUMENTS AND CONTROLS – The layout of all controls is shown here.
2. WORK NOTES – General notes on daily work with the tractor e.g. starting up/turning off the tractor, operating the transmission etc.
3. OPERATIONAL USE – This chapter contains notes on various work uses, specifically for use with implements, e.g. three-point linkage, rear PTO etc.
4. TYRES/WHEELS/TRACK WIDTHS/BALLASTING – Settings for various tractor working scenarios are described here, e.g. tyre pressures, track widths etc.

Tractor maintenance is divided into two chapters:

1. LUBRICATION/MAINTENANCE – Regular maintenance intervals.
2. ELECTRICAL LAYOUT – General maintenance notes on electrics.

**IMPORTANT:** *See the alphabetical index at the end of the manual in order to find a particular item in the manual concerning your machine.*

Position descriptions such as in front, behind, right and left are understood to be as seen from the tractor's seat, facing in a forward direction.

Do NOT allow yourself or anyone else to drive the machine or carry out maintenance work without having read the manual. Only employ trained drivers who have shown their ability to correctly and safely work and maintain the machine.

With its standard equipment and licensed fittings, this tractor is intended for use in agriculture etc.

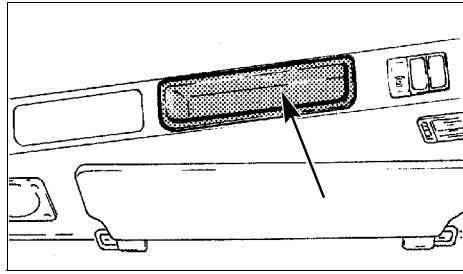
Do NOT use the machine for any other purpose other than those described in the manual. Get in touch with an authorized retailer or the Case Steyr Company concerning changes, additions or modifications which could be necessary for your machine to fulfill the relevant national guidelines and safety requirements. Release or approval from the manufacturer is required in the case of special bodies. Unapproved changes render product liability void.

## Keeping your manual safe

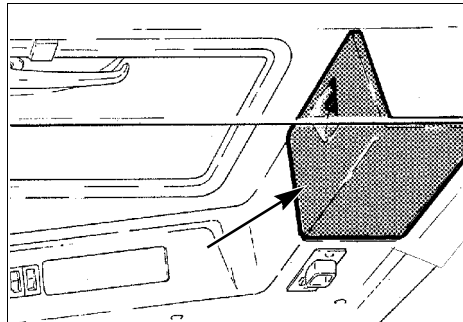
Keep the operating manual in the compartment provided for that purpose on your tractor.

Ensure that this manual is complete and remains in good condition.

Ask your retailer for additional manuals or further information as well as support for your machine. Your retailer employs specially trained engineers who know the best method of repair and maintenance for your machine.



LOW-TOP VERSIONS



HIGH-TOP VERSIONS

TRIM THIS EDGE

**IMPORTANT:** *This operating manual is part of your tractor. If the tractor is sold or hired out, the operating manual **MUST** be handed over with it.*

## Declaration of conformity

This tractor meets the EC Electromagnetic compatibility guideline (89/336/EEC) – and is marked with CE.

## Type approval

The tractors are road traffic law approved in all EC countries with the following overall type approvals.

e1 – 74/150 – 0056

in the respective valid amendment state.



## AGGREGATE/SERIAL NUMBERS

### PRODUCT IDENTIFICATION AND SERIAL NUMBER

Fill in the machine type designation, the product identification number (P.I.N.) and serial number on the corresponding line below. If required, pass on this numerical data to the Case-Steyr retailer when ordering parts or making inquiries.

Write down the identification number. Records and the vehicle log book must be kept in a safe place. If the machine is stolen, these code numbers must be reported to the local police station.

### Type plate details

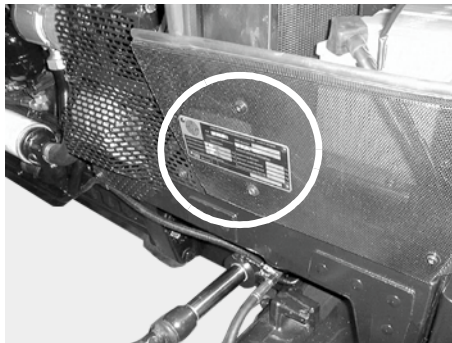
CASE Germany GmbH D - 69126 Heidelberg	
TYP: 9055.75	EWG-Nummer: e1-74/150-0056
Identifizierungsnummer: DBD 00 55005	
Zugmaschine:	Technisch zulässige Anhängelast:
zul.Gesamtgewicht*): 6500 bis kg	ungebremste Anh.last: 1500 kg
zul.Achslast vorne*): 3000 bis kg	Anh.last f. Unabh.Bremsg: 6000 kg
zul.Achslast hinten*): 4500 bis kg	auflaufgebremste Anh.last: 8000 kg
*) abhängig von der montierten Bereifung	hydr./pneumat.gebr. Anh.last: 35500 kg
CE 2,7	MODEL CODE 9057.75 / CS 86

SS99G027

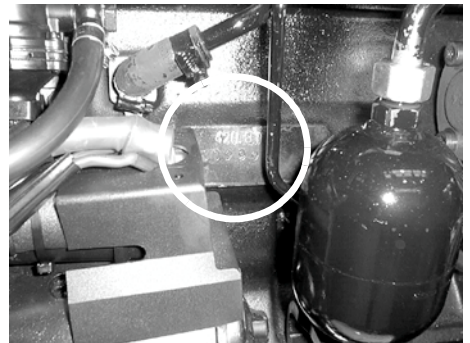
### Arrangement of individual numbers

TRACTOR

ENGINE



SD9M005



SD98M004

Type designation \_\_\_\_\_

Serial No. \_\_\_\_\_

Product identification number

\_\_\_\_\_

TRIM THIS EDGE

LEFT PAGE

TRIM THIS EDGE

**AGGREGATE/SERIAL NUMBERS**

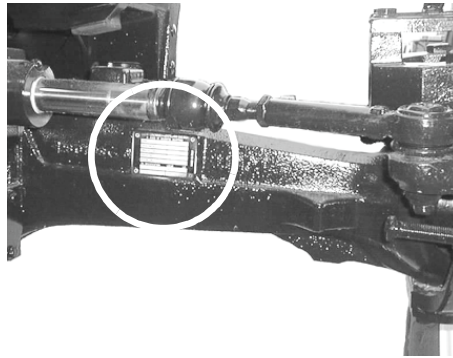
**CAB**



SD98E003

Serial No. \_\_\_\_\_

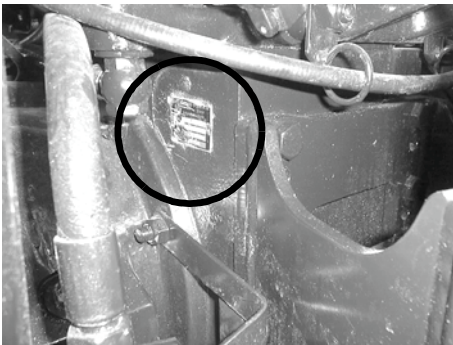
**4-WHEEL DRIVE AXLE**



SD98E005

Serial No. \_\_\_\_\_

**TRANSMISSION**



SD98M006

Serial No. \_\_\_\_\_

TRIM THIS EDGE

## SAFETY/SAFETY PLATES



### SAFETY



Read and observe the operating instructions and safety notes and before starting.

You should be aware that your own safety and the safety of others depends on how the machine is serviced and operated. You must become acquainted with the arrangement and function of all control elements before attempting to work with the machine. **ALL CONTROL ELEMENTS MUST BE TESTED IN A SAFE AREA BEFORE STARTING WORK.**

**READ THE MANUAL THOROUGHLY** and ensure that you understand the purpose and function of the control elements. Each device has certain function related restrictions. Before work is begun, ensure that the speed, braking effect, manoeuvrability, stability and load ratio of this machine has been correctly estimated.

Safety regulations, insurance requirements and national, regional and local law is not replaced by the safety notes in this manual. Ensure that the machine is properly equipped according to the respective laws and guidelines.

It is allowed to modify the vehicle within the framework of technical values under compliance with possible modification guidelines in force, type relevant modifications must be made known to the authorities concerned.

CASE-STEYR strives towards improvements in safety: This occurs through the production of tractors with better and better safety facilities and through notes on the rules for their safe operation.



**THIS SAFETY WARNING SYMBOL INDICATES IMPORTANT SAFETY NOTES IN THIS MANUAL. WHEN THIS SYMBOL APPEARS, THE SUBSEQUENT NOTES MUST BE READ THOROUGHLY AND YOU SHOULD BE AWARE OF POSSIBLE DANGER OF INJURY AND POSSIBLY DEATH.**

M171B

## CORRECT USAGE

This tractor is built exclusively for use in agricultural, communal or forestry work (correct usage). The tractor's function is mainly in its pulling power and to pull, push, carry or operated particular implements, machines or trailers.

Usage above and beyond this is considered as incorrect. The manufacturer will not accept responsibility for any resulting damages. The risk is carried solely by the user.

Strict adherence to the operating, service and maintenance requirements stipulated by the manufacturer also fall under correct usage.

This Case-Steyr tractor may only be used, serviced and maintained by capable persons who are familiar with the particular properties of the machine and who

have been instructed in the corresponding safety regulations (accident prevention).

Accident prevention regulations and other general recognised safety technical, industrial health and road safety guidelines must be adhered to.

Alterations made to the machine without the manufacturer's express, written permission, will render the guarantee null and void.

### **GENERAL RULES FOR SAFETY AND FOR THE PREVENTION OF ACCIDENTS**

- In addition to the instructions contained in these operating instructions, general safety and accident prevention regulations must be observed.
- Observe the relevant regulations when using public traffic areas.
- Familiarisation with all mechanisms and control elements and with their functions is required before starting work. It will be too late for this during the actual work.
- Before starting, check the immediate vicinity of the machine (e.g. children). Ensure you're vision is not impaired.
- Never leave the engine running in enclosed areas. Sufficient ventilation is required.
- Handle fuel with great care. Increased fire hazard. Never refuel close to open flames or flying sparks. Do not smoke when refuelling.
- Switch off the engine and remove the ignition key when refuelling. Do not refuel in enclosed areas. Wipe off spilt fuel immediately.
- Keep the engine clean to avoid fire hazards.
- Handle battery acids with extreme caution (toxic and caustic).

### **CARRIAGE OF PASSENGERS**

- Passengers may only be carried if a regulation passenger seat is fitted.
- The carriage of persons is not permitted beyond this.
- Children may only be carried if special seats are provided (available on the open market).

TRIM THIS EDGE



### DRIVING



- Always adjust your speed to the relevant circumstances. Avoid sudden turns when driving uphill, downhill or diagonally on hillsides. Switch the differential lock OFF when driving around bends. Never disengage the clutch and change gear when travelling downhill.
- Connect trailers and/or implements correctly. Connected implements, trailers or ballast weight have a direct influence on handling characteristics, manoeuvrability and braking. It must therefore be ensured that you have sufficient strength for steering and braking.
- Observe the maximum permissible axle or support loads and all-up tractor weight.
- When driving around bends with trailers or implements connected, take overhang and pendulum force of the equipment into consideration.



### LEAVING THE TRACTOR



- When leaving the tractor, make sure that it can not roll away (apply parking brake, wheel chocks, switch off the engine).
- Remove the ignition key and lock the driver's cab (if fitted).
- As long as the engine is still running, the tractor may not be left unobserved.
- Never leave the driver platform/cab while the tractor is moving.
- Lower all equipment or attachments to the ground before leaving the tractor.



### ATTACHMENTS



- Take particular care when coupling trailers or other equipment – do not walk or stand directly between the tractor and the trailer or equipment
- Secure trailers and equipment against rolling away.
- Only operate the tractor if all safety devices are fitted and in the correct safety position.



### PTO SHAFT OPERATION



- Stop the engine before attaching and detaching the universal drive shaft.
- When operating the PTO, do not allow anyone, under any circumstance to stand near the turning PTO shaft or universal drive shaft.
- Protective coverings must be mounted on the universal drive shaft and the PTO shaft stub. See page 111.
- Equipment with high inertia does not immediately stop when the PTO shaft is switched OFF. Use universal drive shafts with overrun idling. Wait until the equipment has run down and has completely stopped before cleaning or carrying out adjustments.

Thank you so much for reading.  
Please click the “Buy Now!”  
button below to download the  
complete manual.



After you pay.

You can download the most  
perfect and complete manual in  
the world immediately.

Our support email:

[ebooklibonline@outlook.com](mailto:ebooklibonline@outlook.com)