

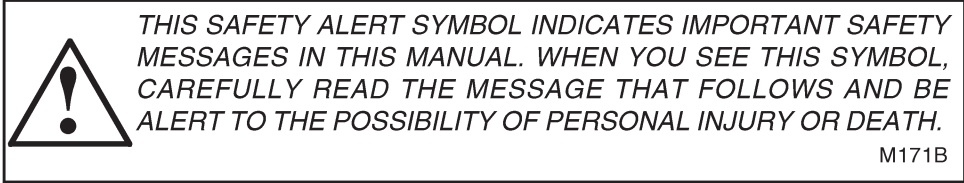
MX100, MX110, MX120 and MX135 Tractors

Operator's Manual

P.I.N. JJA0108301 and After
P.I.N. JJE0966253 and After

Rac 6-24671




CASE *III*



If Safety Decals on this machine use the words **Danger, Warning or Caution**, which are defined as follows:

- **DANGER:** Indicates an immediate hazardous situation which if not avoided, will result in death or serious injury. The color associated with Danger is RED.
- **WARNING:** Indicates an potentially hazardous situation which if not avoided, will result in serious injury. The color associated with Warning is ORANGE.
- **CAUTION:** Indicates an potentially hazardous situation which if not avoided, may result in minor or moderate injury. It may also be used to alert against unsafe practices. The color associated with Caution is YELLOW.

If Safety Decals on this machine are ISO two panel Pictorial, decals are defined as follows:

- The first panel indicates the nature of the hazard.
- The second panel indicates the appropriate avoidance of the hazard.
- Background color is YELLOW.
- Prohibition symbols such as   and  if used, are RED.



WARNING

IMPROPER OPERATION OF THIS MACHINE CAN CAUSE INJURY OR DEATH. BEFORE USING THIS MACHINE, MAKE CERTAIN THAT EVERY OPERATOR:

- Is instructed in safe and proper use of the machine.
- Reads and understands the Manual(s) pertaining to the machine.
- Reads and understands ALL Safety Decals on the machine.
- Clears the area of other persons.
- Learns and practices safe use of machine controls in a safe, clear area before operating this machine on a job site.

It is your responsibility to observe pertinent laws and regulations and follow Case Corporation instructions on machine operation and maintenance.

CASE TECHNICAL MANUALS

Manuals are available from your Dealer for the operation, service and repair of your machine. For prompt convenient service, contact your Dealer for assistance in obtaining the manuals for your machine.

Your Dealer can expedite your order for operators manuals, parts catalogs, service manuals and maintenance records.

Always give the Machine Name, Model and P.I.N. (product identification number) or S.N. (serial number) of your machine so your Dealer can provide the correct manuals for your machine.

CALIFORNIA

Proposition 65 Warning

Diesel engine exhaust and some of its constituents are known to the State of California to cause cancer, birth defects, and other reproductive harm.

Battery posts, terminals and related accessories contain lead and lead compounds. **Wash hands after handling.**

NOTE: CNH America LLC reserves the right to make improvements in design or changes in specifications at any time without incurring any obligation to install them on units previously sold.

GENERAL TABLE OF CONTENTS

TO THE OWNER	1
IDENTIFICATION NUMBERS/MACHINE COMPONENTS	5
MACHINE COMPONENTS.....	7
SAFETY/DECALS	9
SAFETY	9
HAZARDOUS CHEMICALS	13
ROLL OVER PROTECTIVE STRUCTURE (ROPS)	17
INSTRUMENTS/CONTROLS	19
INSTRUMENTS AND CONTROLS	19
OPERATORS SEAT	20
STANDARD (ANALOG) INSTRUMENT CLUSTER	29
DELUXE (DIGITAL) INSTRUMENT CLUSTER	32
OPERATING CONTROLS	39
OPERATING INSTRUCTIONS	57
OPERATING INSTRUCTIONS	57
NORMAL STARTING PROCEDURE	61
PARKING THE TRACTOR AND STOPPING THE ENGINE	70
OPERATING THE TRANSMISSION	72
DRAWBAR	84
HEIGHT ADJUSTABLE TRAILER HITCH	88
TRAILER BRAKE COUPLINGS	89
TOWING THE TRACTOR	97
HOW TO TRANSPORT THE TRACTOR	98
FIELD OPERATION	99
FIELD OPERATION	99
WHEEL SLIP INDICATOR	100
PROGRAMMING THE INSTRUMENT CLUSTER	102
DISTANCE FUNCTION OPERATION	113
AREA FUNCTION OPERATION	114
REAR POWER TAKEOFF	115
REAR THREE POINT HITCH PREPARATION	127
REAR THREE POINT HITCH OPERATION	134
REAR THREE POINT HITCH DIAGNOSTIC DISPLAY	147
DIFFERENTIAL LOCK CONTROL	150
MECHANICAL FRONT DRIVE (MFD) OPERATION	154
FRONT HITCH PREPARATION (If Equipped)	163

FRONT HITCH OPERATION	167
REMOTE HYDRAULIC VALVES	168
REMOTE HYDRAULICS OPERATION	173
IMPLEMENT CABLE ACCESS	179
FOLDABLE ROPS FRAME (If Equipped).....	180
LOADER OPERATION	182
TIRES/WHEELS/SPACING/BALLAST	183
TIRES, WHEELS, SPACING AND BALLAST	183
TIRE AND WHEEL SERVICE	191
INSTRUMENT CLUSTER PROGRAMMING FOR TIRE SIZES	192
FRONT AXLE AND FRONT TREAD ADJUSTMENTS	194
MECHANICAL FRONT DRIVE (MFD) TRACTORS	203
FRONT TO REAR TIRE SIZE COMBINATIONS	204
MFD FRONT WHEEL FENDERS (If equipped)	205
REAR WHEEL TREAD ADJUSTMENT	207
TRACTOR BALLAST	217
LUBRICATION/MAINTENANCE	231
LUBRICATION AND MAINTENANCE	231
HOURMETER	232
HOOD AND SIDE PANELS	233
LUBRICANTS AND CAPACITIES	234
LUBRICATION AND MAINTENANCE CHART	236
ELECTRICAL SYSTEM	289
ELECTRICAL SYSTEM	289
BULB AND LAMP REPLACEMENT	293
FUSES	305
MACHINE STORAGE	309
PUTTING THE TRACTOR INTO STORAGE	309
TRAVEL SPEEDS	311
TRAVEL SPEEDS - PRIOR TO P.I.N.....	311
TRAVEL SPEEDS - P.I.N. AND AFTER	338
SPECIFICATIONS	355
SPECIFICATIONS	355
GENERAL MACHINE	358
APPROXIMATE TRACTOR DIMENSIONS	361
DETAIL INDEX	369

TO THE OWNER

Use this manual as your guide. Read this manual before you start the engine or operate this machine. Refer to the Detail Index at the end of this manual for locating specific items about your machine. If you follow the instructions given in this manual, your Tractor will work well for many years.

NOTE: *Some information, illustrations and photographs in this manual may differ to the standard equipment and accessories on your tractor. See your dealer for further information.*

Your Dealer can give you assistance with Case made parts and persons with special training that know the best methods of repair and maintenance for your tractor.

Call your Dealer if you need any assistance or information.

Tractor with Mechanical Front Drive (MFD)



RD00M004

NOTE: *The right and left of the tractor in this manual are the same as your right and left when sitting in the tractor seat looking forward.*

TO THE OWNER

ROPS Tractor with Mechanical Front Drive (MFD)



RR00M023

Tractor with Foldable ROPS



RR00M024

MX Special with Fixed ROPS

High Clearance Tractor



RD97B158

Tractor with Two Wheel Drive



RR00M025

How To Use This Manual

Read this manual before you start the engine or operate your Tractor. If you need any more information, see your dealer.

This manual contains important information about the safe operation, adjustment and maintenance of your Case Tractor. To help you find information easily this manual has been separated into chapters, as shown in the General Table of Contents. The operation of the Tractor has been separated into four main chapters:

1. INSTRUMENTS/CONTROLS - Showing the location and a description of all controls.
2. OPERATING INSTRUCTIONS - General information for every day Tractor operation, e.g. Starting and stopping the Tractor, operating the transmission etc.
3. FIELD OPERATION - Information for various operations specifically for use in the field, e.g. Operation of the 3 point hitch, rear PTO etc.
4. TIRES/WHEELS/SPACING/BALLAST - Adjustments for various Tractor operating applications, e.g. Tire pressures, tread widths etc.

The maintenance of the tractor has been separated into two main chapters:

1. LUBRICATION/MAINTENANCE - Service interval hours, and adjustments.
2. ELECTRICAL SYSTEM - General electrical service information.

TO THE OWNER

IMPORTANT: Refer to the Detail Index at the end of this manual for locating specific items about your machine.

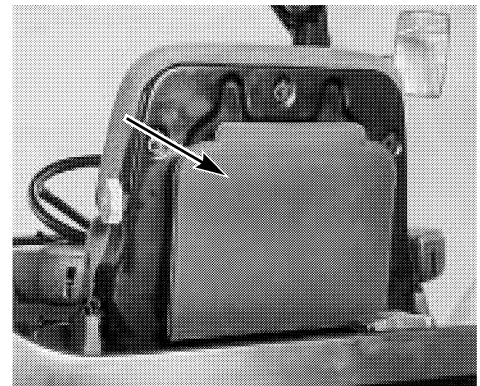
DO NOT operate or permit anyone to operate or service this machine until you or the other persons have read this manual. Use only trained operators who have demonstrated the ability to operate and service this machine correctly and safely.

This Tractor, with standard equipment and authorized attachments, is intended to be used for farming and related operations.

DO NOT use this machine for any application or purpose other than those described in this manual. Consult an authorized dealer or the Case Corporation on changes, additions or modifications that can be required for this machine to comply with various country regulations and safety requirements. Unauthorized modifications could cause serious injury or death. Anyone making such unauthorized modifications is responsible for the consequences.

Manual Storage

Keep the Operators Manual stored in the manual compartment equipped on this machine. Make sure this manual is complete and in good condition. Contact your dealer to obtain additional manuals, for any further information or assistance about your machine. Your dealer has technicians with special training that know the best methods of repair and maintenance for your tractor.



DP96E064

IMPORTANT: This Operators Manual is part of your Tractor. If the Tractor is sold, loaned or rented, the Operators Manual **MUST** go with it.

IDENTIFICATION NUMBERS/MACHINE COMPONENTS

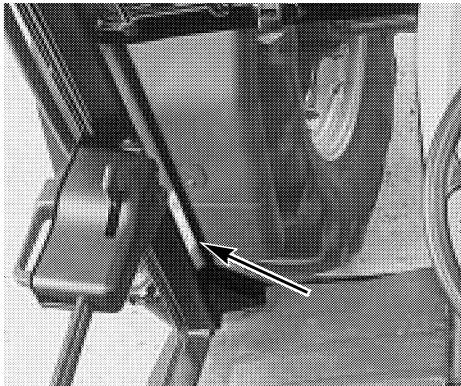
PRODUCT IDENTIFICATION AND SERIAL NUMBERS

Write your machine Model number, Product Identification Number (P.I.N.), and Serial numbers on the lines provided below. If needed, give these numbers to your Case dealer when you need parts or information for your machine.

Make a record of the numbers. Keep the record and your Manufacturers Statement of Origin in a safe place. If the machine is stolen, report the numbers to your local law enforcement agency.

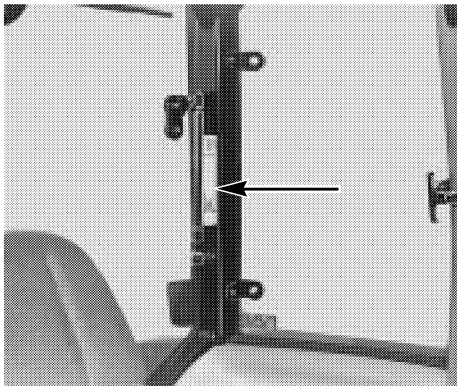
Number Locations

TRACTOR WITH CAB



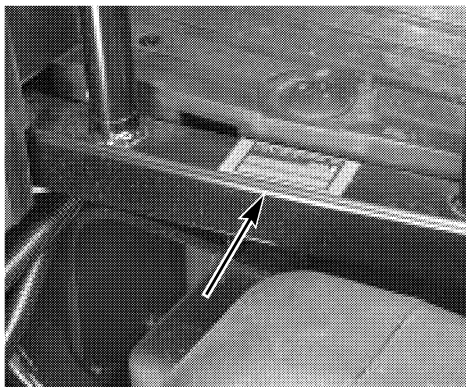
DP96J402

CAB



DD96M083

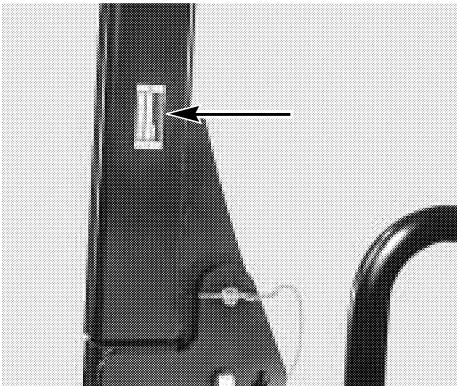
TRACTOR WITHOUT CAB



RD98A122

Serial Number _____

ROPS FRAME



RD96N006

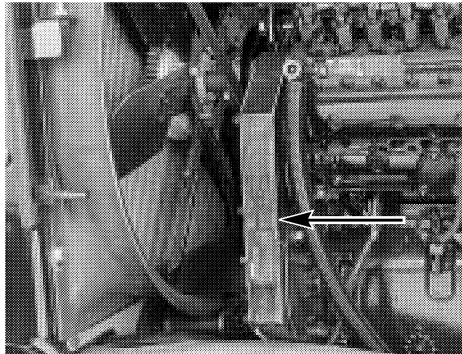
Model Number _____

Product Identification Number _____

Serial Number _____

IDENTIFICATION NUMBERS/MACHINE COMPONENTS

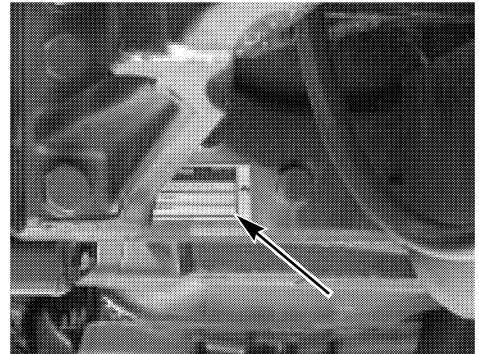
ENGINE



DP96J380

Serial Number _____

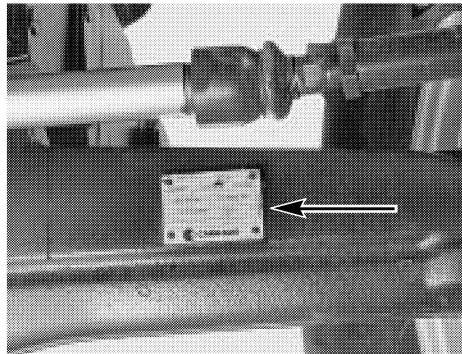
TRANSMISSION



RD99D030

Serial Number _____

MFD AXLE

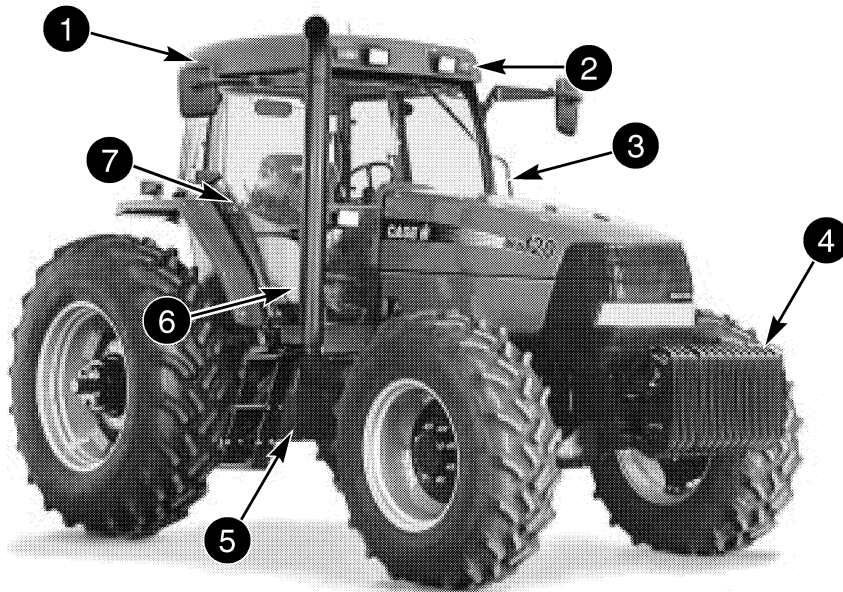


DP96H250

Serial Number _____

IDENTIFICATION NUMBERS/MACHINE COMPONENTS

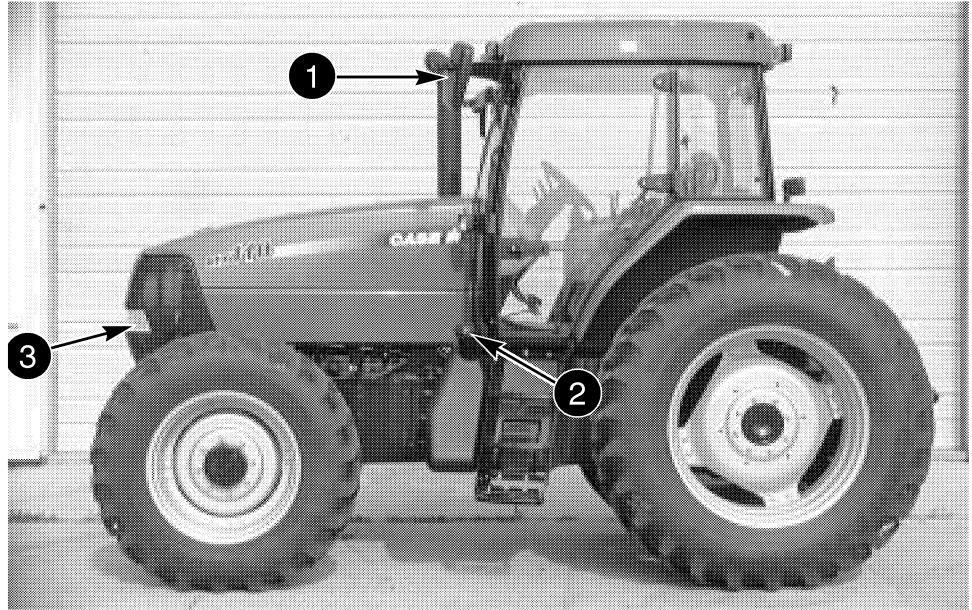
MACHINE COMPONENTS



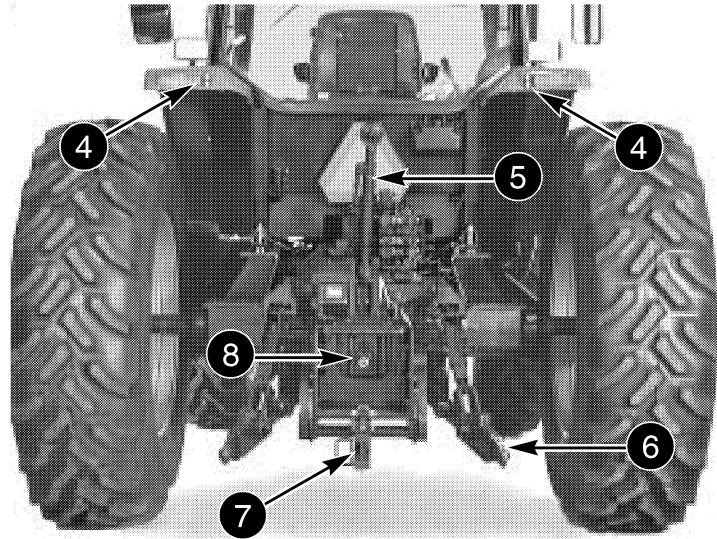
DR00M001

- | | |
|--------------------------|--------------------------------------|
| 1. ROPS CAB | 5. BATTERY BOX |
| 2. ROOF FRONT WORK LAMPS | 6. EXHAUST MUFFLER |
| 3. HAND RAIL | 7. RIGHT HAND CAB DOOR (IF EQUIPPED) |
| 4. FRONT BALLAST WEIGHTS | |

IDENTIFICATION NUMBERS/MACHINE COMPONENTS



RD00M005



RD96N012

- | | |
|---|-------------------------------|
| 1. REAR VIEW MIRRORS | 5. TOP LINK - 3 POINT HITCH |
| 2. FUEL FILLER CAP | 6. LOWER LINK - 3 POINT HITCH |
| 3. WORK LAMPS (OUTER), HEAD LAMPS (INNER) | 7. DRAWBAR |
| 4. EXTERNAL CONTROLS - 3 POINT HITCH | 8. REAR PTO |

SAFETY

Before operating, read and comply with the operators manual and safety instructions.

Understand that your safety and the safety of other persons is measured by how you service, and operate this machine. Know the positions and operations of all controls before you try to operate. **MAKE SURE YOU CHECK ALL CONTROLS IN A SAFE AREA BEFORE STARTING YOUR WORK.**

READ THIS MANUAL COMPLETELY and make sure you understand the controls. All equipment has a limit. Make sure you understand the speed, brakes, steering, stability, and load characteristics of this machine before you start to operate.

The safety information given in this manual does not replace safety codes, insurance needs, federal, state and local laws. Make sure your machine has the correct equipment needed by the local laws and regulations.

CASE is continuing to work for your safety: by making tractors with better protection and by giving these rules for safe operation.



WARNING: *THIS SAFETY ALERT SYMBOL INDICATES IMPORTANT SAFETY MESSAGES IN THIS MANUAL. WHEN YOU SEE THIS SYMBOL, CAREFULLY READ THE MESSAGE THAT FOLLOWS AND BE ALERT TO THE POSSIBILITY OF DEATH OR SERIOUS INJURY.*

M171C



SAFETY RULES



- Before starting the engine, be sure all operating controls are in neutral. This will eliminate accidental movement of the machine or start up of power driven equipment. R106C
- Operate controls only when seated in the Operators seat. R137
- Securely fasten your seat belt. Your tractor is equipped with a ROPS cab or frame for your protection. The seat belt can help insure your safety if it is used and maintained. Never wear a seat belt loosely or with slack in the belt system. Never wear the belt in a twisted condition or pinched between the seat structural members. R271
- A frequent cause of personal injury or death is persons falling off and being run over. Do not permit others to ride. Only one person - the operator - should be on the machine when it is in operation. R115A
- Before leaving the tractor, stop the engine and remove the key from the key switch, put all controls in NEUTRAL and apply the park brake.

Buy Now



Our support email:

ebooklibonline@outlook.com