

CASE
***High-Tech* tractors**
CS100, CS110,
CS120, CS130, CS150

from product identification no. DBD0076282

Operator's Manual

Sva 6-28490



High-Tech tractors

CASE

CS100, CS110, CS120, CS130 and CS150

Sva 6-28490



THIS WARNING SYMBOL POINTS TO IMPORTANT SAFETY NOTES IN THIS MANUAL. WHEN THIS SYMBOL APPEARS, THE SUBSEQUENT NOTES ARE TO BE READ THROUGH CAREFULLY IN ORDER TO MAKE YOU AWARE OF POSSIBLE DANGER OF INJURY, EVEN RESULTING IN DEATH.

M171B

The safety labels on this machine uses the words **danger, warning or caution**. These terms are defined as follows:

- **DANGER:** This indicates an immediately impending danger situation which, if not avoided, can lead to death or serious injury. The colour allocated to the term "danger" is RED.
- **WARNING:** This term indicates a possible impending danger situation which, if not avoided, can lead serious injury. The colour connected to the term "warning" is ORANGE.
- **CAUTION:** This term indicates a possible impending danger situation which, if not avoided, can lead to slight or medium injuries. The term can also be used to warn against unsafe practices. The colour connected to the term "caution" is YELLOW.



WARNING

OPERATING THIS MACHINE INCORRECTLY CAN LEAD TO INJURY OR DEATH. MAKE SURE THAT EACH DRIVER HAS MET THE FOLLOWING REQUIREMENTS BEFORE USING THIS MACHINE:

- He must have been instructed in the safe, correct use of the machine.
- He must have read and understood the manual (manuals) referring to the machine.
- He must have read and understood ALL safety labels on the machine.
- He has turned away all persons from the working area.
- He must have studied and practised the safe usage of the machines control elements in a safe and open training field before using this machine in the working environment.

It is your responsibility to pay attention to the relevant laws and guidelines and the notes of Case Steyr Landmaschinentechnik GmbH concerning working with this machine and its subsequent servicing.

TABLE OF CONTENTS

TO THE USER	1
AGGREGATE/SERIAL NUMBERS.....	4
PRODUCT IDENTIFICATION AND SERIAL NUMBER	4
SAFETY/SAFETY PLATES.....	6
SAFETY	6
CORRECT USAGE	6
GENERAL RULES FOR SAFETY AND FOR THE PREVENTION OF ACCIDENTS	7
CARRIAGE OF PASSENGERS	7
DRIVING	8
LEAVING THE TRACTOR	8
ATTACHMENTS	8
PTO SHAFT OPERATION	8
MAINTENANCE AND OTHER WORK	9
DANGEROUS CHEMICALS	9
BASIC RULES	9
SAFETY LABELS	10
INSTRUMENTS/OPERATING CONTROLS.....	15
CLIMBING ONTO THE TRACTOR	15
DRIVER'S SEAT	16
OPERATING CONTROLS	34
DRIVING	55
BEFORE STARTING THE ENGINE	55
BATTERY MASTER SWITCH (if fitted)	56
SAFETY SWITCH	56
INDICATOR LAMPS AND COMBINATION INSTRUMENT FOR OPERATING STATUS	57
STANDARD STARTING PROCEDURE	58
TRACTOR OPERATION IN LOW TEMPERATURES (WINTER OPERATION)	60
HINTS FOR DRIVING	63
OPERATING THE TRANSMISSION	68
STOPPING THE TRACTOR AND STOPPING THE ENGINE	77
CAB VENTILATION / HEATING	79
ADJUSTABLE TOWBAR	83
HEIGHT-ADJUSTABLE TOWBAR (if fitted)	87

AUTO HITCH (if fitted)	91
DIMENSIONS FOR TRAILERS/ ATTACHMENT R TOW-BARS	95
CONNECTIONS FOR TRAILER BRAKE LINES (if fitted)	96
ADDITIONAL ELECTRICAL SOCKET	98
TRACTOR WARNING LAMPS	101
RECOVERY	103
TRANSPORTING THE TRACTOR	104
 OPERATIONAL USE.....	105
CRAWLER GEAR MODE (if fitted)	105
REAR POWER TAKE OFF (PTO) SHAFT	106
OPERATING THE CASE FRONT PTO (if fitted)	112
PREPARING THE REAR THREE-POINT LINKAGE	113
OPERATING THE DIGITAL ELECTRONIC LIFTING GEAR CONTROL – (EHR-D)	125
PREPARING THE CASE FRONT-END LIFTING GEAR (if fitted)	135
WORKING WITH THE CASE FRONT LIFTING GEAR	136
AUXILIARY CONTROL UNITS	138
OPERATING THE AUXILIARY CONTROL UNITS	143
DIFFERENTIAL LOCK	150
OPERATING THE 4-WHEEL DRIVE	152
OPERATING THE FRONT AXLE INDEPENDENT SUSPENSION (if fitted)	154
FASTENING BRACKET FOR EXTERNAL LEVERS	156
DIGITAL TRACTOR METER SPEED CALIBRATION	157
 TYRES/WHEELS/TRACK WIDTH/BALLAST.....	158
ADJUSTING THE FRONT AXLE AND THE FRONT AXLE TRACK	160
ADJUSTING THE FRONT AXLE TRACK	161
ADJUSTING THE REAR AXLE TRACK WIDTH	163
4 WHEEL DRIVE – TYRE COMBINATIONS	166
FRONT WHEEL MUDGUARD – 4-WHEEL DRIVE TRACTOR (if fitted)	167
TRACTOR BALLAST	168
 LUBRICATION / MAINTENANCE.....	171
ENVIRONMENT	171
PLASTIC AND FIBRE-GLASS RE-INFORCED PARTS	171
TOOL BOX	171
OPERATING HOURS COUNTER	172
ENGINE HOOD	173
LUBRICATION AND FILLING LEVELS	174
DAILY INSPECTIONS	182

ENGINE MAINTENANCE	187
MAINTENANCE TRANSMISSION/HYDRAULICS	196
FRONT AXLE MAINTENANCE	199
STEERING MAINTENANCE	201
BRAKE MAINTENANCE	202
TOW-BAR MAINTENANCE	203
ELECTRICAL MAINTENANCE	204
FRONT PTO-SHAFT MAINTENANCE	205
FRONT HYDRAULIC MAINTENANCE	206
GENERAL MAINTENANCE	206
 ELECTRICAL SYSTEM.....	 209
BATTERIES	209
REPLACING BULBS AND LAMPS	212
FUSES	221
RELAYS	225
 TECHNICAL DATA	 227
ENGINE	227
ELECTRICAL SYSTEM	229
GENERAL VEHICLE DATA	229
DRIVING SPEEDS	233
VEHICLE WEIGHTS	237
VEHICLE DIMENSIONS	238
 FORESTRY VERSION	 239
 INDEX	 244

High-Tech CASE CS150 with 4-wheel drive



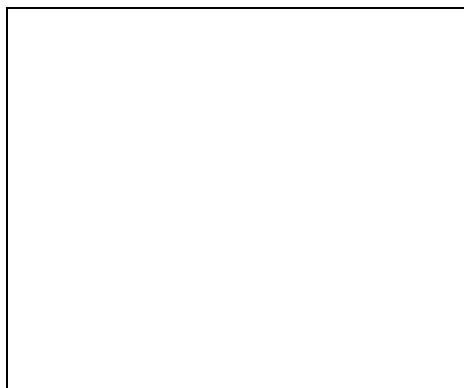
SD99N003

Dealers stamp



Manufacturer:

CASE STEYR
Landmaschinentechnik Ges.m.b.H.
Steyrerstrasse 32
A-4300 St. Valentin
AUSTRIA



How to use this manual

This manual must be read before starting up the engine or working with your tractor. Call your retailer for further information.

This manual contains important information concerning working, setting up and maintaining your Case Steyr tractor safely. This manual is divided into individual chapters corresponding to the contents so that you can easily find information. Information concerning the tractor is divided into 4 chapters:

1. INSTRUMENTS AND CONTROLS – The layout of all controls is shown here.
2. WORK NOTES – General notes on daily work with the tractor e.g. starting up/turning off the tractor, operating the transmission etc.
3. OPERATIONAL USE – This chapter contains notes on various work uses, specifically for use with implements, e.g. three-point linkage, rear PTO etc.
4. TYRES/WHEELS/TRACK WIDTHS/BALLASTING – Settings for various tractor working scenarios are described here, e.g. tyre pressures, track widths etc.

Tractor maintenance is divided into two chapters :

1. LUBRICATION/MAINTENANCE – Regular maintenance intervals.
2. ELECTRICAL LAYOUT – General maintenance notes on electrics.

IMPORTANT: *See the alphabetical index at the end of the manual in order to find a particular item in the manual concerning your machine.*

Position descriptions such as in front, behind, right and left are understood to be as seen from the tractor's seat, facing in a forward direction.

Do NOT allow yourself or any other person to drive the machine or carry out maintenance work without having first read the manual. Only employ trained drivers who have shown their ability to correctly and safely work and maintain the machine.

With its standard equipment and licensed fittings, this tractor is intended for use in agriculture etc.

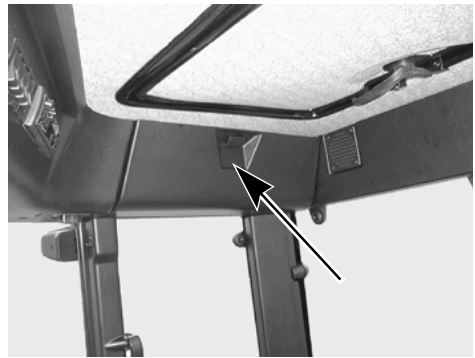
Do NOT use the machine for any other purpose other than those described in the manual. Get in touch with an authorised retailer or the Case Steyr Company concerning changes, additions or modifications which could be necessary for your machine to fulfil the relevant national guidelines and safety requirements. Release or approval from the manufacturer is required in the case of special bodies. Unapproved changes render product liability void.

Keeping your manual safe

Keep the operating manual in the compartment provided for that purpose on your tractor.

Ensure that this manual is complete and remains in good condition.

Ask your retailer for additional manuals or further information as well as support for your machine. Your retailer employs specially trained engineers who know the best method of repair and maintenance for your machine.



SD98B028

IMPORTANT: *This operating manual is part of your tractor. If the tractor is sold or hired out, the operating manual **MUST** be handed over with it.*

Declaration of conformity

This tractor meets the EC Electromagnetic compatibility guideline (89/336/EEC)

– and is marked with CE.

Type approval

The tractors are road traffic law approved in all EC countries with the following overall type approvals.

e1 – 74/150 – 0057.xx

in the respective valid amendment state.

Over and above this, national approvals exist for versions with a measured speed of up to 50 km/h.


AGGREGATE/SERIAL NUMBERS

PRODUCT IDENTIFICATION AND SERIAL NUMBER

Fill in the machine type designation, the product identification number (P.I.N.) and serial number on the corresponding line below. If required, pass on this numerical data to the Case-Steyr retailer when ordering parts or making inquiries.


Write down the identification number. Records and the vehicle log book must be kept in a safe place. If the machine is stolen, these code numbers must be reported to the local police station.

Type plate details



CASE Germany GmbH

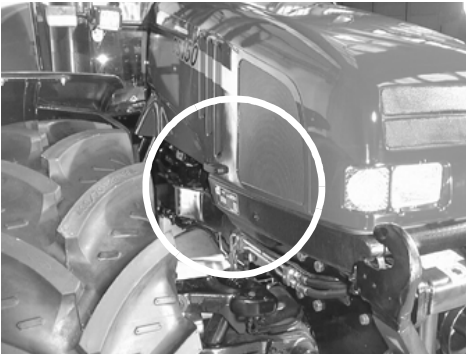
D - 69126 Heidelberg

TYP:	9080-6	EWG-Nummer:	e1-74/150-0057		
Identifizierungsnummer:	DBD00 75006				
Zugmaschine:		Technisch zulässige Anhängelast:			
zul.Gesamtgewicht*):	7500 bis 9500	kg	ungebremste Anh.last:		kg
zul.Achslast vorne*):	4190 bis	kg	Anh.last f. Unabh.Bremsg:		kg
zul.Achslast hinten*):	6830 bis	kg	aufaufgebremste Anh.last:		kg
*) abhängig von der montierten Bereifung		hydr./pneumat.gebr. Anh.last:			kg
		3		* weitere zul. Gewichte siehe Ziffer 33 Fzg.brief	

SS99J016

Arrangement of individual numbers

TRACTOR

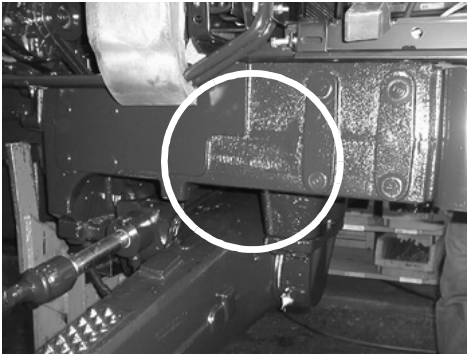


SD99N005

Type designation _____

Product identification number

TRACTOR



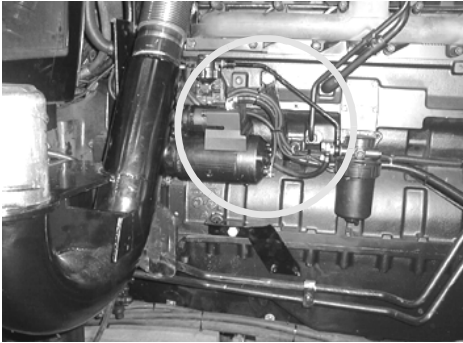
SD98B035

Type designation _____

Product identification number

AGGREGATE/SERIAL NUMBERS

ENGINE



SD00A007

Serial No. _____

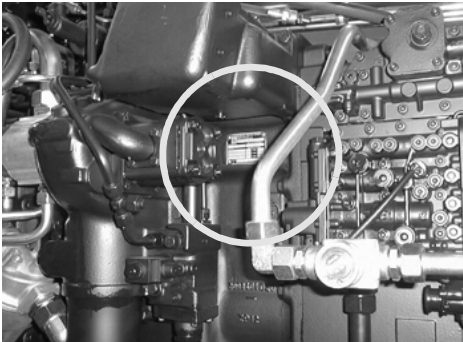
WHEEL AXLE (if fitted)



SD98B059

Serial No. _____

DRIVING GEAR



SD98D008

Serial No. _____

CAB



SD98B036

Serial No. _____

4-WHEEL DRIVE AXLE



SD98B037

Serial No. _____

SAFETY/SAFETY PLATES



SAFETY



Read and observe the operating instructions and safety notes and before starting.

You should be aware that your own safety and the safety of others depends on how the machine is serviced and operated. You must become acquainted with the arrangement and function of all control elements before attempting to work with the machine. **ALL CONTROL ELEMENTS MUST BE TESTED IN A SAFE AREA BEFORE STARTING WORK.**

READ THE MANUAL THOROUGHLY and ensure that you understand the purpose and function of the control elements. Each device has certain restrictions. Before work is begun, ensure that the speed, braking effect, manoeuvrability, stability and load ratio of this machine has been correctly estimated.

Safety regulations, insurance requirements and national, regional and local law is not replaced by the safety notes in this manual. Ensure that the machine is properly equipped according to the respective laws and guidelines.

It is allowed to modify the vehicle within the framework of technical values under compliance with possible modification guidelines in force, type relevant modifications must be made known to the authorities concerned.

CASE-STEYR strives towards improvements in safety: This occurs through the production of tractors with better and better safety facilities and through notes on the rules for their safe operation.



THIS SAFETY WARNING SYMBOL INDICATES IMPORTANT SAFETY NOTES IN THIS MANUAL. WHEN THIS SYMBOL APPEARS, THE SUBSEQUENT NOTES MUST BE READ THOROUGHLY AND YOU SHOULD BE AWARE OF POSSIBLE DANGER OF INJURY AND POSSIBLY DEATH.

M171B

CORRECT USAGE

This tractor is built exclusively for use in agricultural, communal or forestry work (correct usage). The tractor's function is mainly in its pulling power and to pull, push, carry or operated particular implements, machines or trailers.

Usage above and beyond this is considered as incorrect. The manufacturer will not accept responsibility for any resulting damages. The risk is carried solely by the user.

Strict adherence to the operating, service and maintenance requirements stipulated by the manufacturer also fall under correct usage.

This Case-Steyr tractor may only be used, serviced and maintained by capable persons who are familiar with the particular properties of the machine and who have been instructed in the corresponding safety regulations (accident prevention).

Accident prevention regulations and other general recognised safety technical,

industrial health and road safety guidelines must be adhered to.

Alterations made to the machine without the manufacturer's express, written permission, will render the guarantee null and void.



GENERAL RULES FOR SAFETY AND FOR THE PREVENTION OF ACCIDENTS



- In addition to the instructions contained in these operating instructions, general safety and accident prevention regulations must be observed.
- Observe the relevant regulations when using public traffic areas.
- Familiarisation with all mechanisms and control elements and with their functions is required before starting work. It will be too late for this during the actual work.
- Before starting, check the immediate vicinity of the machine (e.g. children). Ensure you're vision is not impaired.
- Never leave the engine running in enclosed areas. Sufficient ventilation is required.
- Handle fuel with great care. Increased fire hazard. Never refuel close to open flames or flying sparks. Do not smoke when refuelling.
- Switch off the engine and remove the ignition key when refuelling. Do not refuel in enclosed areas. Wipe off spilt fuel immediately.
- Keep the engine clean to avoid fire hazards.
- Handle battery acids with extreme caution (toxic and caustic).



CARRIAGE OF PASSENGERS



- Passengers may only be carried if a regulation passenger seat is fitted.
- The carriage of persons is not permitted beyond this.
- Children may only be carried if special seats are provided (available on the open market).



Our support email:

ebooklibonline@outlook.com