

CASE
CVX 120, CVX 130
CVX 150, CVX 170
Tractors

Sva 6-31500

TRIM THIS EDGE

TRIM THIS EDGE

RIGHT PAGE



THIS WARNING SYMBOL POINTS TO IMPORTANT SAFETY NOTES IN THIS MANUAL. WHEN THIS SYMBOL APPEARS, THE SUBSEQUENT NOTES ARE TO BE READ THROUGH CAREFULLY IN ORDER TO MAKE YOU AWARE OF POSSIBLE DANGER OF INJURY, EVEN RESULTING IN DEATH. M171B

The safety labels on this machine use the words **danger, warning or caution**. These terms are defined as follows:

- **DANGER:** This indicates an immediate hazardous situation that, if not avoided, will result in death or serious injury. The colour associated with Danger is RED.
- **WARNING:** This indicates a potentially hazardous situation that, if not avoided, could result in death or serious injury. The colour associated with Warning is ORANGE.
- **CAUTION:** This indicates a potentially hazardous situation that, if not avoided, may result in minor or moderate injury. It may also be used to alert against unsafe practices. The colour associated with Caution is YELLOW.

TRIM THIS EDGE



WARNING

OPERATING THIS MACHINE INCORRECTLY CAN LEAD TO INJURY OR DEATH. MAKE SURE THAT EACH DRIVER HAS MET THE FOLLOWING REQUIREMENTS BEFORE USING THIS MACHINE:

- He must have been instructed in the safe, correct use of the machine.
- He must have read and understood the manual (manuals) referring to the machine.
- He must have read and understood ALL safety labels on the machine.
- He has turned away all persons from the working area.
- He must have studied and practiced the safe usage of the machines control elements in a safe and open training field before using this machine in the working environment.

It is your responsibility to pay attention to the relevant laws and guidelines and the notes of Case Steyr Landmaschinentechnik GmbH concerning working with this machine and its subsequent servicing.

TRIM THIS EDGE

LEFT PAGE

TABLE OF CONTENTS

TO THE USER	1
AGGREGATE/SERIAL NUMBERS.....	4
PRODUCT IDENTIFICATION AND SERIAL NUMBER	4
SAFETY/SAFETY PLATES.....	6
SAFETY	6
CORRECT USAGE	6
GENERAL RULES FOR SAFETY AND FOR THE PREVENTION OF ACCIDENTS	7
CARRIAGE OF PASSENGERS	7
DRIVING	8
LEAVING THE TRACTOR	8
ATTACHMENTS	8
PTO SHAFT OPERATION	8
MAINTENANCE AND OTHER WORK	9
DANGEROUS CHEMICALS	9
BASIC RULES	9
SAFETY LABELS	10
INSTRUMENTS/OPERATING CONTROLS.....	12
CLIMBING ONTO THE TRACTOR	12
DRIVER'S SEAT	13
OPERATING CONTROLS	25
DRIVING	51
BEFORE STARTING THE ENGINE	51
BATTERY MASTER SWITCH (if fitted)	52
DRIVING SEAT SWITCH	52
INDICATOR LAMPS AND COMBINATION INSTRUMENT FOR OPERATING STATUS	53
STANDARD STARTING PROCEDURE	54
DRIVE STRATEGIES	56
STOPPING AND PARKING THE TRACTOR	57
STANDSTILL CONTROL	58
PARKING INTERLOCK	58
OPERATING THE TRACTOR AT LOW TEMPERATURES (WINTER OPERATION)	59
HINTS FOR DRIVING	62
OPERATING THE TRANSMISSION	64
CAB VENTILATION / HEATING	73

TRIM THIS EDGE

TRIM THIS EDGE

RIGHT PAGE

HEIGHT-ADJUSTABLE TOW-BARS	
(if fitted)	75
ADJUSTABLE TOW-BAR	78
AUTO PICK UP HITCH WITH HOOK	
hydraulically extendable (if fitted)	83
DIMENSIONS FOR TRAILER/	
ATTACHMENT TOW-BAR EYES	87
CONNECTIONS FOR TRAILER BRAKE LINES (if fitted)	88
ADDITIONAL ELECTRICAL SOCKET	90
HAZARD WARNING LAMPS	94
TOWING THE TRACTOR	96
TRANSPORTING THE TRACTOR	97
OPERATIONAL USE.....	98
OPERATING THE CASE FRONT PTO SHAFT	
(if fitted)	106
PREPARING THE REAR THREE-POINT LINKAGE	107
OPERATING THE ELECTRONIC 3-POINT HITCH CONTROL (EHR)	118
PREPARING THE CASE FRONT HITCH.	
(If fitted)	127
WORKING WITH THE CASE FRONT HITCH	128
AUXILIARY VALVES	130
OPERATING THE AUXILIARY CONTROL UNITS	134
DIFFERENTIAL LOCK	138
OPERATING THE 4-WHEEL DRIVE	140
OPERATING THE FRONT AXLE INDEPENDENT SUSPENSION (if fitted)	141
FASTENING BRACKET FOR EXTERNAL LEVERS	142
TYRES/WHEELS/TRACK WIDTH/BALLAST.....	143
ADJUSTING THE FRONT AXLE AND THE FRONT AXLE TRACK WIDTH	145
ADJUSTING THE FRONT AXLE TRACK	146
ADJUSTING THE REAR AXLE TRACK WIDTH	148
4-WHEEL DRIVE TYRE COMBINATIONS	152
FRONT WHEEL MUDGUARD – 4-WHEEL DRIVE TRACTOR (If fitted)	153
TRACTOR BALLAST	154
LUBRICATION / MAINTENANCE.....	157
ENVIRONMENT	157
PLASTIC AND FIBRE-GLASS RE-INFORCED PARTS	157
TOOL BOX	157
OPERATING HOURS COUNTER	158
ENGINE HOOD	159
LUBRICATION AND FILLING LEVELS	160
DAILY INSPECTIONS	168

ENGINE MAINTENANCE	173
ENGINE/TRANSMISSION UNIT MAINTENANCE	182
HYDRAULICS MAINTENANCE	184
STEERING MAINTENANCE	185
FRONT AXLE MAINTENANCE	186
BRAKE MAINTENANCE	189
TOWBAR MAINTENANCE	190
ELECTRICAL MAINTENANCE	191
FRONT PTO-SHAFT MAINTENANCE	192
FRONT HYDRAULIC MAINTENANCE	193
GENERAL MAINTENANCE	193
ELECTRICAL SYSTEM.....	196
BATTERY	196
REPLACING BULBS AND LAMPS	199
FUSES and RELAYS	208
TECHNICAL DATA	213
ENGINE	213
ELECTRICAL SYSTEM	215
GENERAL VEHICLE DATA	216
VEHICLEWEIGHTS	220
VEHICLE DIMINSIONS	221
INDEX	222

TRIM THIS EDGE

III

TRIM THIS EDGE

RIGHT PAGE

CASE CVX 150 TRACTOR



SD00F226

TRIM THIS EDGE

Dealers stamp



Manufacturer:

CASE STEYR
Landmaschinentechnik Ges.m.b.H.
Steyrerstrasse 32
A-4300 St. Valentin
AUSTRIA



TRIM THIS EDGE

RIGHT PAGE

How to use this manual

Read this manual before operating your tractor. Call your retailer for further information.

This manual contains important information concerning working, setting up and maintaining your Case Steyr tractor safely. This manual is divided into individual chapters corresponding to the contents so that you can easily find information. Information concerning the tractor is divided into 4 chapters:

1. INSTRUMENTS AND CONTROLS – The layout of all controls is shown here.
2. WORK NOTES – General notes on daily work with the tractor e.g. starting up/turning off the tractor, operating the transmission etc.
3. OPERATIONAL USE – This chapter contains notes on various work uses, specifically for use with implements, e.g. three-point linkage , rear PTO etc.
4. TYRES/WHEELS/TRACK WIDTHS/BALLASTING – Settings for various tractor working scenarios are described here, e.g. tyre pressures, track widths etc.

Tractor maintenance is divided into two chapters:

1. LUBRICATION/MAINTENANCE – Regular maintenance intervals.
2. ELECTRICAL LAYOUT – General maintenance notes on electrics.

IMPORTANT: See the alphabetical index at the end of the manual in order to find a particular item in the manual concerning your machine.

Position descriptions such as in front, behind, right and left are understood to be as seen from the tractor's seat, facing in a forward direction.

Do NOT allow yourself or any other person to drive the machine or carry out maintenance work without having first read the manual. Only employ trained drivers who have shown their ability to correctly and safely work and maintain the machine.

With its standard equipment and licensed fittings, this tractor is intended for use in agriculture etc.

Do NOT use the machine for any other purpose other than those described in the manual. Get in touch with an authorised retailer or the Case Steyr Company concerning changes, additions or modifications which could be necessary for your machine to fulfil the relevant national guidelines and safety requirements. Release or approval from the manufacturer is required for custom-built bodies. Unapproved changes render product liability void.

TRIM THIS EDGE

Keeping your manual safe



SD98B028

Keep the operating manual in the compartment provided for that purpose on your tractor.

Ensure that this manual is complete and remains in good condition.

Ask your retailer for additional manuals or further information as well as support for your machine. Your retailer employs specially trained engineers who know the best method of repair and maintenance for your machine.

IMPORTANT: *This operating manual is part of your tractor. If the tractor is sold or hired out, the operating manual MUST be handed over with it.*

Declaration of conformity

This tractor meets the EC Electromagnetic compatibility guideline (89/336/EEC)

– and is marked with CE.

Type approval

The tractors are road traffic law approved in all EC countries with the following overall type approvals, with a designed speed of up to 40 km/h.

e1 - 74/150 - 0144

in the respective valid amendment state

Over and above this, national approvals exist for versions with a measured speed of up to 50 km/h.

Software version

ARU	Armrest	1.2.0.0.
EEM	Electronic engine controller	1.5.0.0.
FMGR	Vehicle/transmission controller	2.5.0.0.
SGR	Transmission controller	2.5.0.0.
ICU	Instrument Control	1.4.0.0.

AGGREGATE/SERIAL NUMBERS

PRODUCT IDENTIFICATION AND SERIAL NUMBER

Fill in the machine type designation, the product identification number (P.I.N.) and serial number on the corresponding line below. If required, pass on this numerical data to the Case-Steyr retailer when ordering parts or making inquiries.

Write down the identification number. Records and the vehicle log book must be kept in a safe place. If the machine is stolen, these code numbers must be reported to the local police station.

Type plate details



CASE Germany GmbH

TYP: 9090

EWG-Nummer: e1-74/150-0144

Identifizierungsnummer: DBD0080001

Zugmaschine:		Technisch zulässige Anhängelast:	
zul. Gesamtgewicht*):	9500 bis kg	ungebremste Anh.last:	kg
zul. Achslast vorne*):	4400 bis kg	Anh.last f. Unabh. Bremsg:	kg
zul. Achslast hinten*):	7500 bis kg	aufgebremste Anh.last:	kg
*) abhängig von der montierten Bereifung		hydr./pneumat.gebr. Anh.last:	kg



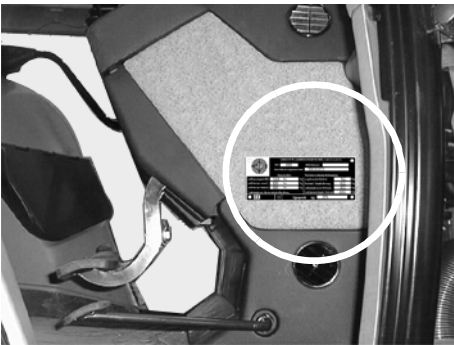
3

* weitere zul. Gewichte siehe Ziffer 38 Fzg.brief

SS00E061

Arrangement of individual numbers

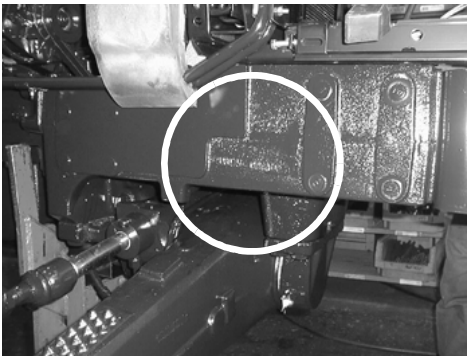
TRACTOR



SD00F114

Type designation _____
Product identification number _____

TRACTOR



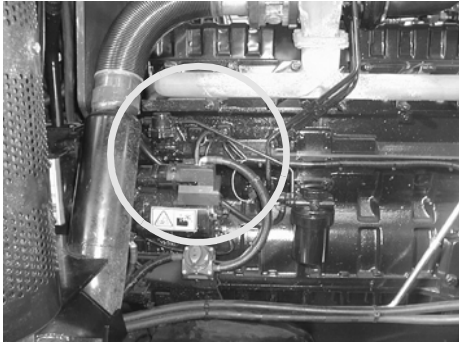
SD98B035

Type designation _____
Product identification number _____

TRIM THIS EDGE

AGGREGATE/SERIAL NUMBERS

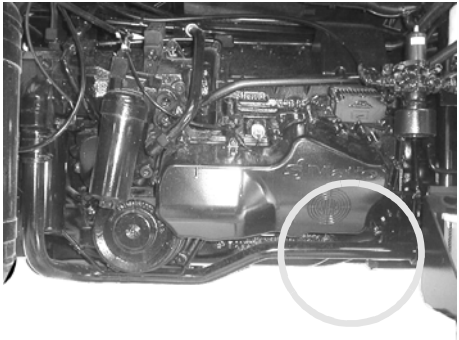
ENGINE



SD00A019

Serial No. _____

ENGINE/TRANSMISSION UNIT



SD00G003

Serial No. _____

4-WHEEL DRIVE (if fitted)



SD98B037

Serial No. _____

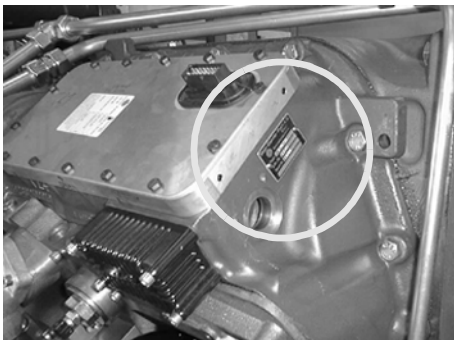
CAB



SD98B036

Serial No. _____

CATRIDGE



SD99K006

Serial No. _____

4-WHEEL DRIVE independent suspension (if fitted)



SD98B059

Serial No. _____

TRIM THIS EDGE

TRIM THIS EDGE

RIGHT PAGE

SAFETY/SAFETY PLATES



Read and observe the operating instructions and safety notes and before starting. You should be aware that your own safety and the safety of others depends on how the machine is serviced and operated. You must become acquainted with the arrangement and function of all control elements before attempting to work with the machine. **ALL CONTROL ELEMENTS MUST BE TESTED IN A SAFE AREA BEFORE STARTING WORK.**

READ THE MANUAL THOROUGHLY and ensure that you understand the purpose and function of the control elements. Each device has certain restrictions. Before work is begun, ensure that the speed, braking effect, maneuverability, stability and load ratio of this machine has been correctly estimated.

Safety regulations, insurance requirements and national, regional and local law is not repaced by the safety notes in this manual. Ensure that the machine is properly equipped according to the respective laws and guidelines.

It is allowed to modify the vehicle within the framework of technical values under compliance with possible modification guidelines in force, type relevant modifications must be made known to the authorities concerned.

CASE-STEYR strives towards improvements in safety: This occurs through the production of tractors with better and better safety facilities and through notes on the rules for their safe operation.



THIS SAFETY WARNING SYMBOL INDICATES IMPORTANT SAFETY NOTES IN THIS MANUAL. WHEN THIS SYMBOL APPEARS, THE SUBSEQUENT NOTES MUST BE READ THOROUGHLY AND YOU SHOULD BE AWARE OF POSSIBLE DANGER OF INJURY AND POSSIBLY DEATH.

M171B

CORRECT USAGE

This tractor is designed mainly for use in agricultural, communal or forestry work (correct usage). The tractor's function is mainly in its pulling power and to pull, push, carry or operated particular implements, machines or trailers.

Usage above and beyond this is considered as incorrect. The manufacturer will not accept responsibility for any resulting damages. The risk is carried solely by the user.

Strict adherence to the operating, service and maintenance requirements stipulated by the manufacturer also fall under correct usage.

This Case-Steyr tractor may only be used, serviced and maintained by capable persons who are familiar with the particular properties of the machine and who have been instructed in the corresponding safety regulations (accident prevention).

Accident prevention regulations and other general recognised safety technical, industrial health and road safety guidelines must be adhered to.

Alterations made to the machine without the manufacturer's express, written permission, will render the guarantee null and void.



GENERAL RULES FOR SAFETY AND FOR THE PREVENTION OF ACCIDENTS



- In addition to the instructions contained in these operating instructions, general safety and accident prevention regulations must be observed.
- Observe the relevant regulations when using public traffic areas.
- Familiarisation with all mechanisms and control elements and with their functions is required before starting work. It will be too late for this during the actual work.
- Before starting, check the immediate vicinity of the machine (e.g. children). Ensure you're vision is not impaired.
- Never leave the engine running in enclosed areas. Sufficient ventilation is required.
- Handle fuel with great care. Increased fire hazard. Never refuel close to open flames or flying sparks. Do not smoke when refueling.
- Switch off the engine and remove the ignition key when refueling. Do not refuel in enclosed areas. Wipe off spilt fuel immediately.
- Keep the engine clean to avoid fire hazards.
- Handle battery acids with extreme caution (toxic and caustic).



CARRIAGE OF PASSENGERS



- Passengers may only carried if a regulation passenger seat is fitted.
- The carriage of persons is not permitted beyond this.
- Children may only be carried if special seats are provided (available on the open market).

TRIM THIS EDGE

DRIVING

- Always adjust your speed to the given circumstances. Avoid sudden turns when driving uphill, downhill or diagonally on hillsides. Switch the differential lock OFF when driving around bends. Never disengage the clutch when driving downhill.
- Connect trailers and/or implements correctly. Connected implements, trailers or ballast weight have a direct influence on handling characteristics, maneuverability and braking. It must therefore be ensured that you have sufficient strength for steering and braking.
- Observe the maximum additional axle loading and total tractor weight.
- When driving around bends with trailers or implements connected, take overhang and pendulum force of the equipment into consideration.

LEAVING THE TRACTOR

- When leaving the tractor, make sure that it can not roll away (apply parking brake, use wheel chocks).
- Remove the ignition key and lock the driver's cab.
- As long as the engine is still running, the tractor may not be left unobserved.
- Never leave the driver platform/cab while the tractor is moving.
- Lower all equipment or attachments to the ground before leaving the tractor.

ATTACHMENTS

- Take particular care when coupling trailers or other equipment – do not walk or stand directly between the tractor and the trailer or equipment
- Secure trailers and equipment against rolling away.
- Only operate the tractor if all safety devices are fitted and in the correct safety position.

PTO SHAFT OPERATION

- Stop the engine before attaching and detaching the universal drive shaft.
- When operating the PTO, do not allow anyone, under any circumstance to stand near the turning PTO shaft or universal drive shaft.
- Protective coverings must be mounted on the input shaft and the PTO shaft stub. See page 104.
- Equipment with high inertia does not immediately stop when the PTO shaft is switched OFF. Use universal drive shafts with overrun idling. Wait until the equipment has run down and has completely stopped before cleaning or carrying out adjustments.

Thank you so much for reading.
Please click the “Buy Now!”
button below to download the
complete manual.



After you pay.

You can download the most
perfect and complete manual in
the world immediately.

Our support email:

ebooklibonline@outlook.com