

**PJV55 PJV65 PJV75
PJN55 PJN65 PJN75
TRACTORS**

Mod 6-32200

TRIM THIS EDGE

TRIM THIS EDGE

RIGHT PAGE





THIS SAFETY ALERT SYMBOL INDICATES IMPORTANT SAFETY MESSAGES IN THIS MANUAL. WHEN YOU SEE THIS SYMBOL, CAREFULLY READ THE MESSAGE THAT FOLLOWS AND BE ALERT TO THE POSSIBILITY OF PERSONAL INJURY OR DEATH.

M171B

Safety Decals on this machine use the words **Danger, Warning or Caution**, which are defined as follows:

- **DANGER:** Indicates an immediate hazardous situation which, if not avoided, will result in death or serious injury. The color associated with Danger is RED.
- **WARNING:** Indicates a potentially hazardous situation which, if not avoided, could result in serious injury. The color associated with Warning is ORANGE.
- **CAUTION:** Indicates a potentially hazardous situation which, if not avoided, may result in minor or moderate injury. It may also be used to alert against unsafe practices. The color associated with Caution is YELLOW.

Safety Decals on this machine which are ISO-two panel Pictorial type decals, are defined as follows:

- The first panel indicates the nature of the hazard.
- The second panel indicates the appropriate avoidance of the hazard.
- Background color is YELLOW.
- Prohibition symbols such as  and  if used, are RED.



WARNING

IMPROPER OPERATION OF THIS EQUIPMENT CAN CAUSE INJURY OR DEATH. BEFORE USING THIS EQUIPMENT, MAKE CERTAIN THAT EVERY OPERATOR:

- Is instructed in safe and proper use of the machine.
- Reads and understands the Manual(s) pertaining to the equipment.
- Reads and understands ALL Safety Decals on the equipment.
- Clear the area of other persons.
- Learns and practices safe use of equipment controls in a safe, clear area before operating this machine on a job site.

It is your responsibility to observe pertinent laws and regulations and follow Case Corporation instructions on machine operation and maintenance.

TRIM THIS EDGE

LEFT PAGE

GENERAL TABLE OF CONTENTS

TO THE OWNER	1
IDENTIFICATION NUMBER/MACHINE COMPONENTS	4
PRODUCT IDENTIFICATION AND SERIAL NUMBERS	4
SERIAL NUMBER LOCATION	5
SAFETY/DECALS	6
SAFETY	6
INTENDED USE	6
GENERAL SAFETY AND ACCIDENT PREVENTION REGULATIONS	7
TRANSPORTING PASSENGERS	7
OPERATION	7
LEAVING THE TRACTOR	8
IMPLEMENTS	8
PTO OPERATION	8
SERVICE	9
HAZARDOUS CHEMICALS	9
BASIC RULE	9
INSTRUMENTS/CONTROLS	10
OPERATING CONTROLS	10
LEVERS AND PEDALS	10
OPERATING LAMPS AND INSTRUMENTS	15
SWITCHES	20
OPERATORS SEAT	22
OPERATING INSTRUCTIONS	23
RUN-IN PROCEDURE	23
ENGINE OIL	23
ENGINE OIL FILTER	23
TRANSMISSION/HYDRAULIC FILTER	23
WHEEL NUTS AND BOLTS	23
BEFORE STARTING THE ENGINE	24
STARTING THE ENGINE	26
USING BOOSTER BATTERIES	28
AFTER STARTING THE ENGINE	28
DRIVING THE TRACTOR	29

TRIM THIS EDGE

TRIM THIS EDGE

RIGHT PAGE

TRIM THIS EDGE

DIFFERENTIAL LOCK	30
MECHANICAL FRONT DRIVE (MFD)	31
STEERING THE TRACTOR	32
TO MAKE SHARP TURNS	32
BRAKE VALVE FOR TRAILER (OPTIONAL)	33
STOPPING THE TRACTOR	33
STOPPING THE ENGINE	34
FIELD OPERATION	35
POWER TAKE OFF (PTO)	35
POWER TAKE OFF GUARDS	36
OPERATING SAFETY	37
REAR DRAWBAR	38
HEIGHT ADJUSTABLE TOW PIN ASSEMBLY (IF EQUIPPED)	39
THREE POINT HITCH SYSTEM	40
UPPER LINK	44
HITCHING AN IMPLEMENT	44
MEASURING WHEEL SLIP	45
LOADS MATCHED TO TRACTOR	48
ROLL OVER PROTECTIVE STRUCTURE (ROPS)	49
SAFETY RULES	49
HYDRAULIC SYSTEM	51
POSITION CONTROL	51
POSITIONING THE IMPLEMENT	51
OPERATING POSITION CONTROL	52
OPERATING DRAFT CONTROLS	52
SENSITIVITY CONTROL	53
MIXED CONTROL (DRAFT AND POSITION TOGETHER)	54
FIXING THE MAXIMUM WORKING DEPTH	54
OPERATION	55
FLOATING CONDITIONS	55
TRANSPORTING OR TOWING IMPLEMENTS	56
ELECTRONIC LIFT	57
OPERATING CONTROLS	57
OPERATION	58
ENGINE STARTING	58
AUXILIARY VALVES	64
SELF SEALING BREAKAWAY COUPLING	70
TOWING THE TRACTOR	71
TRANSPORTING THE TRACTOR	71

II

TRIM THIS EDGE

LEFT PAGE

HEATED AND VENTILATED CAB	72
FRONT WINDSHIELD	74
REAR WINDOW	74
SUNSHIELD	75
EXTERNAL REAR VIEW MIRROR	75
FRONT/REAR WORK LIGHTS	75
REMOVABLE PANEL	76
WIDSCREENWIPER	76
WINDSCREENER WASHER TANK	76
FUSES BOX	77
INTERIOR LAMP SWITCH	77
REVOLVING BEACON	77
VENTILATION	78
1 - ELECTRIC FAN CONTROL	78
2 - HEATER CONTROL	78
3 - AIR OUTLED VENTS	78
CAB AIR CONDITIONING CONTROLS	78
TIRES/WHEELS/SPACING/BALLAST	79
TIRE AND WHEEL EQUIPMENT	79
LOAD INDEX CHART	81
MAXIMUM TIRE PRESSURE AND LOADS FOR SPEEDS UP TO 30/40 KM/H	82
FRONT WHEEL TREAD WIDTHS	84
FRONT WHEEL TREAD POSITIONS	86
REAR WHEEL TREAD WIDTH POSITIONS	88
LUBRICATION AND MAINTENANCE	91
HOURMETER	92
LUBRICANT SPECIFICATIONS	93
LUBRICATION CHART	96
LUBRICATION CHART (MFD)	97
ENGINE OIL	98
TRANSMISSION/HYDRAULIC OIL	101
MECHANICAL FRONT DRIVE (MFD) DIFFERENTIAL	106
PREVENTIVE MAINTENANCE	108
INITIAL SERVICING	109
ROUTINE SERVICING SCHEDULE	116

TRIM THIS EDGE

III

TRIM THIS EDGE

RIGHT PAGE

TRIM THIS EDGE

ELECTRICAL SYSTEM	129
HEAD LAMPS	129
REAR WORK LAMP	130
DIRECTION, STOP AND TAIL LAMP	131
FUSES	133
CAB FUSES	134
MACHINE STORAGE	135
STORAGE PREPARATION	135
REMOVING FROM STORAGE	136
SPECIFICATIONS	137
GENERAL SPECIFICATIONS	137
PJ55V AND PJ55N SPECIFICATIONS	141
PJ65V AND PJ65N SPECIFICATIONS	142
PJ75V AND PJ75N SPECIFICATIONS	143
APPROXIMATE TRACTOR SPEEDS	144
APPROXIMATE DIMENSIONS (MILLIMETRES)	150
APPROXIMATE DIMENSIONS (MILLIMETRES)	151
APPROXIMATE DIMENSIONS (MILLIMETRES)	152
APPROXIMATE DIMENSIONS (MILLIMETRES)	153
DETAIL INDEX	156

TO THE OWNER

**PJV55, PJV65, PJV75, PJN55, PJN65, PJN75
Pro TRACTORS**



DP98G036

TRIM THIS EDGE

Dealer Stamp



Manufacturer:

CASE GERMANY GmbH
Heinrich-Fuchs Str. 124
69126 Heidelberg
Germany.



TRIM THIS EDGE

RIGHT PAGE

How To Use This Manual

Read this manual before you start the engine or operate your tractor. If you need any more information, see your Case dealer.

This manual contains important information about the safe operation, adjustment and maintenance of your Case Tractor. To help you find information easily this manual has been separated into chapters, as shown in the General Table of Contents. The operation of the tractor has been separated into four main chapters:

1. INSTRUMENTS/CONTROLS - Showing the location of all controls.
2. OPERATING INSTRUCTIONS - General information for every day tractor operation, e.g. starting/stopping the tractor, operating the transmission etc.
3. FIELD OPERATION - Information for various operations specifically for use in the field, e.g. 3 point hitch, rear PTO etc.
4. TIRES/WHEELS/SPACING/BALLAST - Adjustments for various tractor operating applications, e.g. tire pressures, tread widths etc.

The maintenance of the tractor has been separated into two main chapters:

5. LUBRICATION/MAINTENANCE - Hourly service intervals.
6. ELECTRICAL SYSTEM - General electrical service information.

IMPORTANT: Refer to the Detail Index at the end of this manual for locating specific items about your machine.

The right and left of the tractor in this manual are the same as your right and left when sitting in the tractor seat looking forward.

DO NOT operate or permit anyone to operate or service this machine until you or the other persons have read this manual. Use only trained operators who have demonstrated the ability to operate and service this machine correctly and safely.

This tractor, with standard equipment and authorized attachments, is intended to be used for farming, etc.

DO NOT use this machine for any application or purpose other than those described in this manual. Consult an authorized dealer or the Case Corporation on changes, additions or modifications that can be required for this machine to comply with various country regulations and safety requirements. Unauthorized modifications will cause serious injury or death. Anyone making such unauthorized modifications is responsible for the consequences.

TRIM THIS EDGE

Manual Storage

Keep the Operators Manual stored in the manual compartment if equipped on this machine or keep it in a safe place with other machine documentation.

Make sure this manual is complete and in good condition.

Contact your dealer to obtain additional manuals or for any further information or assistance about your machine. Your dealer has technicians with special training that know the best methods of repair and maintenance for your tractor.

IMPORTANT: *This operators manual is part of your tractor. If the tractor is sold, loaned or rented, the operators manual MUST go with it.*

Declaration of Conformity

This tractor complies with the provisions of directive (89/336/EEC):

- Electromagnetic Compatibility.

TRIM THIS EDGE

IDENTIFICATION NUMBERS

PRODUCT IDENTIFICATION AND SERIAL NUMBERS

Write your machine Model number, Product Identification Number (P.I.N.), and Serial numbers on the lines provided below. If needed, give these numbers to your Case dealer when you need parts or information for your machine.

Make a record of the numbers. Keep the record and your Manufacturers Statement of Origin in a safe place. If the machine is stolen, report the numbers to your local police.

Complied in this manual are the operating and maintenance instructions for the PJ55, PJ65, PJ75 V AND N agricultural tractor models.

When in need of service parts always supply the tractor, and engine serial numbers, including prefix and suffix letters.

If information is required that is not available in this manual see your nearest authorized CASE DEALER.

TRIM THIS EDGE

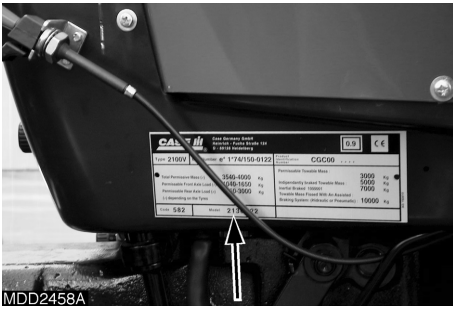


MDD2457A

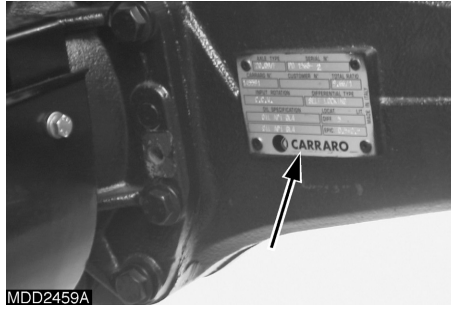
TRIM THIS EDGE

LEFT PAGE

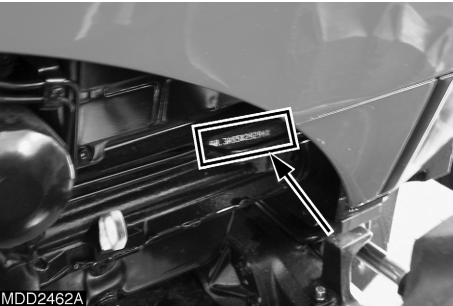
Serial Number Location



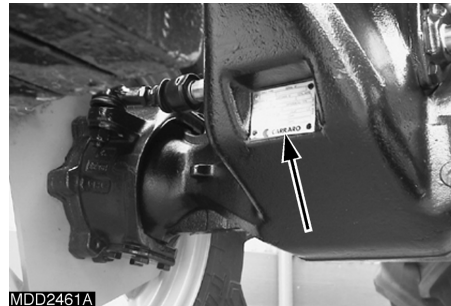
MODEL AND PRODUCT IDENTIFICATION NUMBER PLATE



MFD AXLE SERIAL NUMBER PLATE (N MODELS)



ENGINE SERIAL NUMBER



MFD AXLE SERIAL NUMBER (V MODELS)



TRANSMISSION SERIAL NUMBER



CAB SERIAL NUMBER

TRIM THIS EDGE

For ready reference write the serial numbers of your machine in the spaces below.

- TRACTOR MODEL NUMBER
- PRODUCT IDENTIFICATION NUMBER
- TRACTOR SERIAL NUMBER
- ENGINE SERIAL NUMBER
- TRANSMISSION SERIAL NUMBER
- MECHANICAL FRONT DRIVE AXLE SERIAL NUMBER
- CAB SERIAL NUMBER

TRIM THIS EDGE

RIGHT PAGE




Before operating, read and comply with the operators manual and safety instructions.

Understand that your safety and the safety of other persons is measured by how you service, and operate this machine. Know the positions and operations of all controls before you try to operate. **MAKE SURE YOU CHECK ALL CONTROLS IN A SAFE AREA BEFORE STARTING YOUR WORK.**

READ THIS MANUAL COMPLETELY and make sure you understand the controls. All equipment has a limit. Make sure you understand the speed, brakes, steering, stability, and load characteristics of this machine before you start to operate.

The safety information given in this manual does not replace safety codes, insurance needs, federal, state and local laws. Make sure your machine has the correct equipment needed by the local laws and regulations.

CASE is continuing to work for your safety: by making tractors with better protection and by giving these rules for safe operation.

	<p><i>THIS SAFETY ALERT SYMBOL INDICATES IMPORTANT SAFETY MESSAGES IN THIS MANUAL. WHEN YOU SEE THIS SYMBOL CAREFULLY READ THE MESSAGE THAT FOLLOWS AND BE ALERT TO THE POSSIBILITY OF PERSONAL INJURY OR DEATH.</i></p>	<p>M171B</p>
---	---	--------------

INTENDED USE

This Case tractor is designed solely for use in customary agricultural or similar operation (intended use).

Use in any other way is considered as contrary to the intended use. The manufacturer accepts no liability for any damage or injury resulting from this misuse and these risks must be born solely by the user.

Compliance with and strict adherence to the conditions of operation, service and repair as specified by the manufacturer also constitutes essential elements for the intended use.

This Case tractor should be operated, serviced and repaired only by persons familiar with all its particular characteristics and acquainted with the relevant safety rules (accident prevention).

The accident prevention regulations, all other generally recognized regulations on safety and occupational medicine and the road traffic regulations must be observed at all times.

Any arbitrary modifications carried out on the tractor will relieve the manufacturer of all liability for any resulting damage or injury.

TRIM THIS EDGE

GENERAL SAFETY AND ACCIDENT

PREVENTION REGULATIONS

- In addition to the instructions contained in this operator's manual, also observe the general safety and accident prevention regulations.
- Always comply with local traffic regulations when driving on public roads.
- Before starting work, familiarize yourself with all the controls and instruments and their functions. During work is too late.
- Start the engine only from the operator's seat.
- Never attempt to start engine by shorting across the starting motor terminals as the machine may immediately start to move.
- Before moving away, always check the immediate vicinity of the machine (e.g. for children). Ensure adequate visibility.
- Never run the engine in a closed building. Proper ventilation is required.
- Clothing worn by the operator must be close-fitting. Avoid wearing loose jackets, shirts or ties.
- Handle fuel with care as it is highly flammable. Never refuel the machine in the vicinity of naked flames or sparks. Do not smoke during refuelling.
- Always stop the engine and remove the main switch key before refuelling. Fill fuel tank outdoors. Clean up any spilled fuel immediately.
- Prevent fires by keeping the machine clean.
- Take care when handling battery acid (toxic and corrosive).

TRANSPORTING PASSENGERS

- Passengers may only be carried if a proper passenger seat is fitted.
- The carrying of passengers is otherwise not permitted.

OPERATION

- Always adapt your ground speed to the ground conditions. Avoid making sharp turns when driving up or down slopes or when driving across the slope. Do not attempt to turn the machine with the differential lock engaged. When driving down slopes, never depress the clutch and change gear.
- Attach trailers and/or implements correctly. The operating, steering and braking behavior will be affected by attaching implements, trailers and ballast weights. Therefore ensure adequate steering and braking power.
- Observe maximum permissible axle loads and total weights.
- When making turns with towed or mounted implements, always take into consideration the width and inertia of the implement.

 **LEAVING THE TRACTOR** 

- When leaving the tractor, ensure that it will not roll away (apply park brake, wheel wedges) stop the engine.
- Remove the main switch key and lock the operator's cab (when equipped).
- Never leave the tractor unattended as long as the engine is still running.
- Never leave the operator's platform/cab when driving.
- Lower implement or equipment to the ground before leaving the tractor.

 **IMPLEMENTS** 

- Attach implements and trailers to the tractor only using the prescribed drawbars or hitches.
- Take particular care when attaching trailers or implements.
- Prevent trailer and implement from rolling away.
- Operate tractor only when all guards are fitted and in their correct position.

 **PTO OPERATION** 

- Always shut off engine before connecting or disconnecting drive shaft.
- When operating the PTO, no-one must be allowed to remain in the vicinity of the rotating PTO stub shaft or drive shaft.
- Guards for drive shaft and PTO stub shaft must be fitted.
- High-inertia implements do not become stationary immediately when PTO is disengaged. Allow sufficient time for implement to "coast down" to a halt before cleaning or adjusting.
- As soon as drive shaft has been removed, install guard over PTO stub shaft.

TRIM THIS EDGE

Thank you so much for reading.
Please click the “Buy Now!”
button below to download the
complete manual.



After you pay.

You can download the most
perfect and complete manual in
the world immediately.

Our support email:

ebooklibonline@outlook.com