

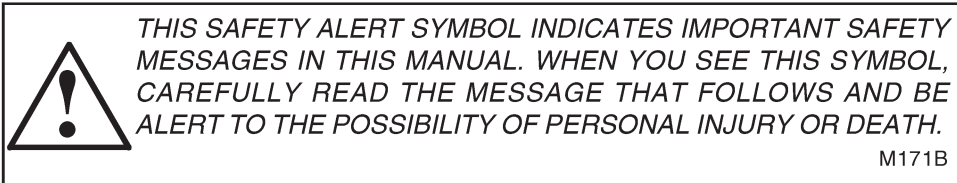
8825 & 8825HP Windrower Tractor

Operators Manual
P.I.N. CFH0127601 and later.

Rac 6-4450

Reprinted




CASE III



If Safety Decals on this machine use the words **Danger, Warning or Caution**, which are defined as follows:

- **DANGER:** Indicates an immediate hazardous situation which if not avoided, will result in death or serious injury. The color associated with Danger is RED.
- **WARNING:** Indicates an potentially hazardous situation which if not avoided, will result in serious injury. The color associated with Warning is ORANGE.
- **CAUTION:** Indicates an potentially hazardous situation which if not avoided, may result in minor or moderate injury. It may also be used to alert against unsafe practices. The color associated with Caution is YELLOW.

If Safety Decals on this machine are ISO two panel Pictorial, decals are defined as follows:

- The first panel indicates the nature of the hazard.
- The second panel indicates the appropriate avoidance of the hazard.
- Background color is YELLOW.
- Prohibition symbols such as   and  if used, are RED.



WARNING

IMPROPER OPERATION OF THIS MACHINE CAN CAUSE INJURY OR DEATH. BEFORE USING THIS MACHINE, MAKE CERTAIN THAT EVERY OPERATOR:

- Is instructed in safe and proper use of the machine.
- Reads and understands the Manual(s) pertaining to the machine.
- Reads and understands ALL Safety Decals on the machine.
- Clears the area of other persons.
- Learns and practices safe use of machine controls in a safe, clear area before operating this machine on a job site.

It is your responsibility to observe pertinent laws and regulations and follow Case Corporation instructions on machine operation and maintenance.



8825 & 8825HP Windrower Tractor



811TR-98F16

This Operator's Manual applies to 8825 and 8825HP Windrower Tractors with the following Serial Numbers: CFH0127601 and later.

TO OUR CUSTOMER

We appreciate your confidence in CASE IH Farm Equipment and thank you for your patronage. In preparing this manual, we hope we have furnished you with a valuable tool for operating and maintaining this fine machine. Use this manual as your guide. Practicing the instructions given here will result in many years of dependable service from your machine.

Your Dealer can give you assistance with CASE IH parts and specially trained personnel to assist you in repair and maintenance.

Call your Dealer if you need any assistance or information.

**CALIFORNIA
Proposition 65 Warning**

Diesel engine exhaust and some of its constituents are known to the State of California to cause cancer, birth defects, and other reproductive harm.

TABLE OF CONTENTS

SPECIFICATIONS	IV
SERIAL NUMBERS	VI
CHECKLISTS	VII
SAFETY PRECAUTIONS	1
GENERAL INFORMATION	9
DESCRIPTION	11
SERVICING	21
PREPARATION	39
OPERATION	41
MAINTENANCE	55
TROUBLESHOOTING	83
STORAGE	86
EXTRA EQUIPMENT	88
ALPHABETICAL INDEX	89

SPECIFICATIONS

SPECIFICATIONS

(Specifications and design are subject to change without notice and without liability therefore.)

MODEL 8825 and 8825HP Windrower Tractor

DIMENSIONS AND WEIGHTS

Weight without header (approx.) 5950 LBS (2699 kg)

Overall length

with draper header 264 IN (6704 mm)

with auger header 242 IN (6147 mm)

Height

top of cab 121 IN (3073 mm)

Clearance under walking beam 36.5 IN (927 mm)

Clearance under frame 35.4 IN (889 mm)

Width, without header

outside of hubs 119.6 IN (3038 mm)

with standard tires 139.5 IN (3543 mm)

with optional tires 147.5 IN (3747 mm)

Wheel base 124 IN (3150 mm)

Tread width

standard tires 122.6 IN (3114 mm)

optional tires 127 IN (3226 mm)

Tread width, castor wheels

minimum 84.3 IN (2140 mm)

maximum 110.2 IN (2800 mm)

Tread width, castor wheels - Flotation

minimum 84.4 IN (2144 mm)

maximum 102.2 IN (3048 mm)

TIRES

Drive wheels

standard 21.5L- 16.1 (I-3) bar tread

optional flotation 21.5L - 16.1 (R-3) Turf tread

wheel nut size 5/8-18

wheel nut torque 200 LB·FT (271 N·m)

tire pressure 24 psi (165 kPa)

Rear caster wheels 11.5L-15 4-ply implement rib

wheel bolt size 9/16-18 x 1-1/8

wheel bolt torque 120 LB·FT (165 N·m)

tire pressure 28 psi (193 kPa)

Rear caster wheels - optional 14L -16.1, 6 ply

implement rib

wheel bolt size 9/16-18 x 1-1/8

wheel bolt torque 120 LB·FT (165 N·m)

tire pressure 10 psi (193 kPa)

ENGINE

Model

8825 Case, 4-390 Diesel

8825HP Case, 4T-390 Diesel

Horsepower

8825 80 at 2500 rpm (r/min)

8825HP 110 at 2500 rpm (r/min)

High Idle 2700 rpm (r/min)

Displacement 239 CU IN (3.9 L)

Cooling system capacity 22 U.S. quarts (20.8 L)

Cooling fan diameter 17.7 IN (450 mm)

Fuel ASTM No. 2 Diesel

Fuel tank capacity 42 U.S. gallons (159 L)

ELECTRICAL SYSTEM

System voltage 12 volts

Grounding negative

Batteries

quantity 2

capacity, each 12 volt, 450 amp

minimum cranking capacity at 0°F

type SAE J537, group size 24 or 27, top post

Alternator

manufacturer Robert Bosch

output 65 amperes

GROUND DRIVE SYSTEM

Final drive roller chain

primary reduction No. 50

final reduction No. 80

Tandem pump Vickers model 19, piston

Ground drive motors Vickers model MFE, fixed displacement motors

SPECIFICATIONS

HYDRAULIC SYSTEM

Ground drive system	
relief pressure	5500 psi (37 921 kPa)
Header and reel lift	
relief pressure	2000 psi (13 790 kPa)

CAB

Cab glass	Tinted, 63 sq ft (5.9 m ²)
Steering column	5 position tilt
Instrument panel gauges	hourmeter, fuel gauge, engine coolant temperature gauge
Instrument cluster warning lamps	alternator, engine oil pressure, engine coolant temperature, with audible alarm for each function
Air ride seat	
8825	not available
8825HP	standard
Ground Speed Assist	
8825	optional
8825HP	standard

AIR CONDITIONING

System size	22 000 BTU/hr
Refrigerant	HFC 134a
Capacity	4.6 LBS (2 kg)
Compressor	Sanden 507H
displacement	9.5 CU IN (154.9 cc)

ACCESSORIES

Lights	4 lights front, square halogen
2 working lights, one each side, square halogen	
1 light rear, square halogen	
flashers on header and tractor	
tail light, turn signals	
Rear view mirrors (left hand standard)	deluxe
Controls	shape-coded handles

LUBRICATION

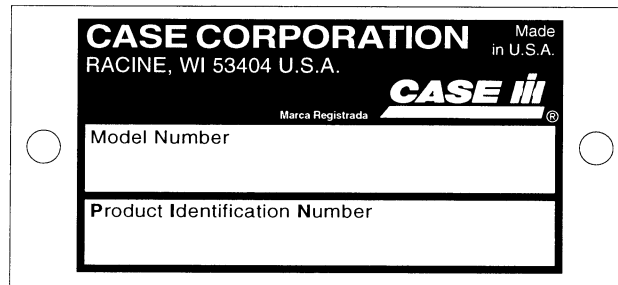
Grease fittings	
lubricant	CASE IH 251 HEP Lithium Grease
Wheel bearings	
lubricant	heavy duty wheel bearing grease
Engine oil	
quantity with filter change	11 U.S. quarts (10.5 L)
type of fluid	Case IH No. 1 Engine Oil, SAE 15W 40, API CE, CDII/CF-4
Hydraulic system	
quantity	
total system	12 U.S. gallons (45 L)
reservoir	8.5 U.S. gallons (32 L)
type of fluid	engine oil, SAE 15W 40
type of fluid, alternate	Case IH Hy-Tran Plus
<i>NOTE: Hy-Tran Plus can be added to factory-installed fluid, but to get the full benefit of the qualities of Hy-Tran Plus a complete oil replacement is required.</i>	
Chaincases, final drive	
quantity, each	4 quarts (3.8 L)
lubricant	Case IH 135H EP Gear Lube 85W 140

SERIAL NUMBERS

SERIAL NUMBERS

When parts or assistance are needed, or when writing to your Authorized Case IH Dealer, always give this information:

1. Model Number of the Machine
2. Product Identification Number



MODEL NUMBER AND PRODUCT IDENTIFICATION NUMBER PLATE

**FOR LOCATION OF THE
PRODUCT IDENTIFICATION NUMBER PLATE
ON THIS MACHINE, SEE THE GENERAL INFORMATION
SECTION IN THIS MANUAL.**

Write the serial numbers of your machine on the lines below.

MODEL NUMBER _____

PRODUCT IDENTIFICATION NUMBER _____

CHECKLISTS



Use good safety practices when working around this machine.

Daily Checklist

- _____ Do the required daily lubrication items and those whose calendar time is due.
- _____ Observe sprockets and components for looseness and alignment.
- _____ Look for loose or missing bolts or parts.
- _____ Check the hydraulic system connections for leaks.
- _____ Check the tension of the pump drive belt and the draper drive belt, if equipped.
- _____ If the machine is to be transported on a road or highway at night or during the day, accessory lights, warning devices and slow moving vehicle emblem must be used for adequate warning to operators of other vehicles. Observe local governmental regulations concerning movement of slow and overwidth vehicles.

Beginning Each Season Checklist

- _____ Remove accumulated dirt, trash, and crop material from machine.
- _____ With machine operating in a stationary position, observe the operation of moving parts. Watch for any signs of faulty operation, overheated bearings, and listen for any unusual sounds.
- _____ Review Safety Precautions.
- _____ Do the required daily lubrication items and those whose calendar time is due.
- _____ Make sure the proper operating adjustments have been made for your crop.
- _____ Check for any special attachment which will help you to do a better job.

SAFETY PRECAUTIONS

Understand that your safety and the safety of other persons is measured by how you service and operate this machine. Know the positions and operations of all controls before you try to operate this machine. **MAKE SURE YOU CHECK ALL CONTROLS IN A SAFE AREA BEFORE STARTING YOUR WORK.**

READ THIS MANUAL COMPLETELY and make sure you understand the controls. All equipment has a limit. Make sure you understand the speed, brakes, steering, stability, and load characteristics of this machine before you start to operate the machine.

The safety information given in this manual does not replace safety codes, insurance needs, state and local laws. Make sure your machine has the correct equipment needed by the local laws and regulations.



THIS SAFETY ALERT SYMBOL INDICATES IMPORTANT SAFETY MESSAGES IN THIS MANUAL. WHEN YOU SEE THIS SYMBOL, CAREFULLY READ THE MESSAGE THAT FOLLOWS AND BE ALERT TO THE POSSIBILITY OF PERSONAL INJURY OR DEATH.

SAFETY PRECAUTIONS

Read and understand all operating instructions and precautions before attempting to operate or service the machine.

Before doing any maintenance or service work on the tractor or the header you must:

- **Put all controls in NEUTRAL.**
- **Apply the parking brake.**
- **Center and lock the steering wheel.**
- **When working on the tractor, lower the header to the ground.**
- **When working on the header, raise the header all the way.**
- **Stop the engine and take the key with you.**
- **Look and Listen! Make sure all moving parts have stopped.**
- **If the header is raised, install the cylinder safety stops on both header lift cylinders.**
- **If the reel is raised, install the safety stops in the safety position under both reel lift arms.**

When the header is raised for service or maintenance work, install the cylinder safety stops on both header lift cylinders to prevent lowering of the header.

When the reel is raised for service or maintenance work, install the safety stops in the safety position under both reel lift arms.

Never check or lubricate chains while the machine is running.

After lubricating, servicing or adjusting the machine, make sure all tools and equipment have been removed.

All shields and guards must be in position before operating the machine.

Emphasize the importance of safety when working around and operating the machine.

Caution others, especially children, about climbing on the machine or being too close while machine is operating.

Do not ride on the machine at any time.

Never carry riders.

Make sure all persons are away from the machine before operating the machine.

Never stand near the header while the machine is operating.

Never stand behind tractor while the header is running.

Never operate the machine at high speeds in crowded places.

Never suddenly reverse wheels to stop or backup.

Always remain seated and have seat belt fastened while operating machine.

Securely fasten your seat belt. The seat belt can help insure your safety if used and maintained. Never wear a seat belt loosely or with slack in the belt system. Never wear the seat belt in a twisted condition or pinched between the seat structural members.

Any time the engine is running and the parking brake is disengaged, the machine will turn if the steering wheel is moved, even though the travel control lever is in neutral.

Always lower the header to the ground when parking.

Do not tow or drive the machine with header up and safety stops in safety position.

Always apply the parking brake when parking, and center and lock the steering wheel.

Always park crosswise to the slope when parking on a hill.

Always travel with the header as low as possible.

Always keep hands, feet and clothing away from moving parts.

Entanglement in rotating drive shafts can cause serious injury or death. Do not operate the machine with drive shafts shields open or removed.

Never check drive belts while machine is running.

Never remove the cap from a hot radiator; escaping steam and hot fluids can cause personal injury.

Hydraulic fluid escaping under pressure can have sufficient force to penetrate the skin, causing serious injury. Be sure to relieve all pressure from hydraulic lines before disconnecting them. Before applying pressure to the system, make sure all connections are tight and that hoses and lines have not been damaged.

Hydraulic fluid escaping from a very small hole can be almost invisible. Always use a piece of cardboard or wood, rather than hands, to search for suspected leaks. If injured by escaping hydraulic fluid, see a doctor immediately.

BE AWARE of the width of the machine. Be careful when roading or transporting the machine on narrow roads and across narrow bridges. See Specifications for the overall dimensions.

Always use ample safety warnings and adequate lights when roading or transporting the machine on public roads. Be sure the SMV emblem is visible. Check with your local law enforcement agencies for specific requirements.

See the Operation Section for information for safe transporting of the machine.

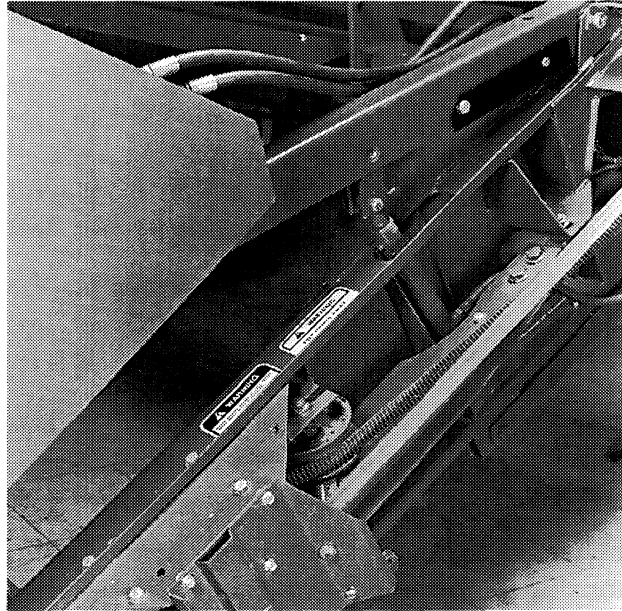
SAFETY PRECAUTIONS

When the header is raised for service or maintenance work, install the cylinder safety stops on both header lift cylinders to prevent lowering of the header.



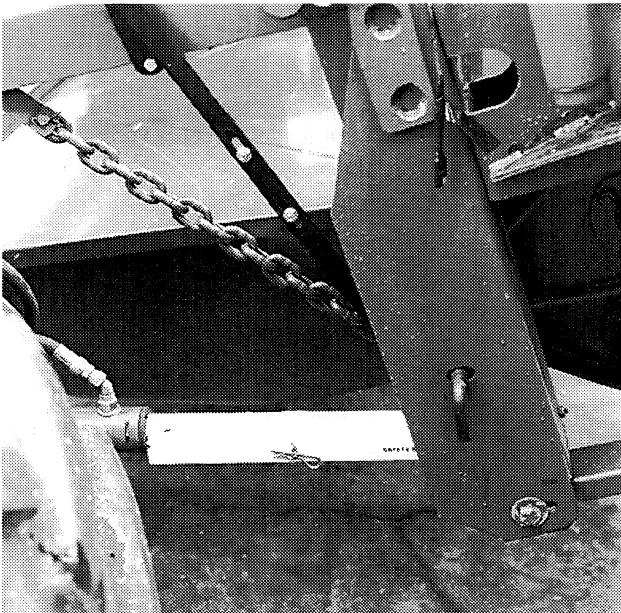
81AH-88063-12

HEADER SAFETY STOP IN STORAGE POSITION



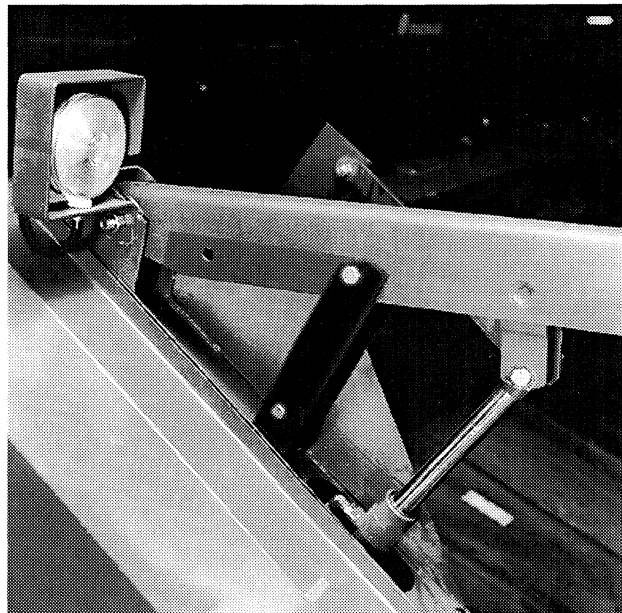
81DG-90012-12

REEL SAFETY STOP IN STORAGE POSITION



81AH-88060-2

HEADER SAFETY STOP IN SAFETY POSITION



82DG-90001-5

REEL SAFETY STOP IN SAFETY POSITION

Buy Now



Our support email:

ebooklibonline@outlook.com