

**MX Series
Magnum Tractors
MX180, MX200, MX220,
MX240 and MX270**

Operators Manual

Rac 6-5344








THIS SAFETY ALERT SYMBOL INDICATES IMPORTANT SAFETY MESSAGES IN THIS MANUAL. WHEN YOU SEE THIS SYMBOL, CAREFULLY READ THE MESSAGE THAT FOLLOWS AND BE ALERT TO THE POSSIBILITY OF DEATH OR SERIOUS INJURY.

M171C

If Safety Decals on this machine use the words **Danger, Warning or Caution**, which are defined as follows:

- **DANGER:** Indicates an immediate hazardous situation that, if not avoided, will result in death or serious injury. The color associated with Danger is RED.
- **WARNING:** Indicates a potentially hazardous situation that, if not avoided, could result in death or serious injury. The color associated with Warning is ORANGE.
- **CAUTION:** Indicates an potentially hazardous situation that, if not avoided, may result in minor or moderate injury. It may also be used to alert against unsafe practices. The color associated with Caution is YELLOW.

If Safety Decals on this machine are ISO two panel Pictorial, decals are defined as follows:

- The first panel indicates the nature of the hazard.
- The second panel indicates the appropriate avoidance of the hazard.
- Background color is YELLOW.
- Prohibition symbols such as   and  if used, are RED.



WARNING

IMPROPER OPERATION OF THIS MACHINE CAN CAUSE DEATH OR SERIOUS INJURY. BEFORE USING THIS MACHINE, MAKE CERTAIN THAT EVERY OPERATOR:

- Is instructed in safe and proper use of the machine.
- Reads and understands the Manual(s) pertaining to the machine.
- Reads and understands ALL Safety Decals on the machine.
- Clears the area of other persons.
- Learns and practices safe use of machine controls in a safe, clear area before operating this machine on a job site.

It is your responsibility to observe pertinent laws and regulations and follow Case Corporation instructions on machine operation and maintenance.

GENERAL TABLE OF CONTENTS

1 - TO THE OWNER	1
PRODUCT IDENTIFICATION AND SERIAL NUMBERS	4
MACHINE COMPONENTS	6
2 - SAFETY/DECALS	7
SAFETY	7
SEAT BELTS	13
DECALS	17
ROLL OVER PROTECTIVE STRUCTURE (ROPS)	19
TRACTOR WARNING LAMPS AND SMV SYMBOL	21
WIDE TRANSPORT WARNING LAMPS	23
3 - OPERATING CONTROLS	25
TRACTOR ACCESS	25
INSTRUMENT PANEL CONTROLS	26
STEERING COLUMN CONTROLS	28
FOOT PEDALS	30
RIGHT CONSOLE CONTROLS	32
ARMREST CONSOLE CONTROLS	38
RIGHT HAND FENDER CONTROLS	41
RIGHT HAND FENDER CONTROLS	44
OPERATORS SEAT WITH AIR SUSPENSION	51
4 - INSTRUMENTATION	55
TRACTOR INSTRUMENTATION	55
PANEL 1	56
PANEL 2	58
PANEL 3 (OPTIONAL)	72
5 - OPERATING INSTRUCTIONS	89
BEFORE STARTING THE ENGINE	89
SERVICE INDICATOR LAMPS	90
AND BAR GRAPH DISPLAYS	90
RUN-IN PROCEDURE	91
SEAT BELTS	92
NORMAL STARTING PROCEDURE	93
STOPPING THE ENGINE	95
COLD TEMPERATURE OPERATION	96
POWER SHIFT TRANSMISSION	103
TRANSMISSION OPERATIONAL COMPONENTS	104
SHUTTLE SHIFTING	108
CREEPER SPEED OPERATION (IF EQUIPPED)	111
TOWING	112

HOW TO TRANSPORT THE TRACTOR	114
6 - FIELD OPERATION	115
GENERAL PROCEDURES FOR CONNECTING IMPLEMENTS	115
POWER TAKEOFF (PTO)	117
THREE POINT HITCH	128
HITCH OPERATION	143
OPERATING IN POSITION CONTROL	148
DRAWBAR	154
DRAWBAR PREPARATION	155
FRONT HITCH (IF EQUIPPED)	163
REMOTE HYDRAULICS	167
LOADER OPERATION	180
CHEMICAL TANK MOUNTING	182
AUXILIARY POWER CONNECTIONS	185
MONITOR MOUNTING	187
GROUND SPEED SENSOR CONNECTOR	187
HYDRAULIC TRAILER BRAKE CONNECTOR (IF EQUIPPED)	188
CAB STEPS	189
7 - IN FIELD PERFORMANCE	191
DIFFERENTIAL LOCK	191
MFD OPERATION (IF EQUIPPED)	195
BALLASTING YOUR TRACTOR FOR OPTIMUM PERFORMANCE	201
BALLASTING GUIDE - 2WD	203
BALLASTING GUIDE - MFD	204
BALLASTING GUIDE - BOTH MFD & REAR DUALS	205
TIRE LOAD AND INFLATION	208
TIRE LOAD AND INFLATION CHART	210
FRONT END WEIGHTS	229
REAR WHEEL WEIGHTS	232
TIRE LIQUID WEIGHT	237
TIRE AND RIM SERVICE	242
TIRE AND RIM EQUIPMENT	243
WHEEL SLIP	245
POWER HOP	248
2WD FRONT AXLE	249
MECHANICAL FRONT DRIVE (MFD) TRACTORS	253
MFD STEERING AND OSCILLATION STOPS	261
FRONT WHEEL FENDERS (IF EQUIPPED)	266
REAR AXLE	271
TRACTOR JACKING POINTS	274
REAR WHEEL TREAD SETTING - SINGLES	276
REAR WHEEL TREAD SETTING - DUALS	278

REAR WHEEL TREAD SETTING - TRIPLES	284
8 - LUBRICATION/FILTERS/FLUIDS/MAINTENANCE	287
LUBRICATION AND MAINTENANCE	287
ENVIRONMENT	287
PLASTIC AND RESIN PARTS	287
TOOL BOX (IF EQUIPPED)	288
SYSTEM CAPACITIES	289
HOOD AND SERVICE DOOR ACCESS	293
LUBRICATION/MAINTENANCE CHART	295
9 - ELECTRICAL SYSTEM	347
SPECIFICATIONS	347
RADIO REGIONAL PROGRAMMING	352
BATTERY SYSTEM SERVICING	353
BULB AND LAMP REPLACEMENT	357
10 - SPECIFICATIONS	365
DIESEL ENGINE	365
POWER TRAIN	367
TRAVEL SPEEDS	370
APPROXIMATE MEASUREMENTS AND WEIGHTS	371
DETAIL INDEX	379

TO THE OWNER

This manual covers the MX180, MX200, MX220, MX240 and MX270 models. This manual contains important information about the safe operation, adjustment and maintenance of your MX Series Magnum tractors. Refer to the Detail Index at the end of this manual for locating specific items about your machine.

DO NOT operate or permit anyone to operate or service this machine until you or the other persons have read this manual. Use only trained operators who have demonstrated the ability to operate and service this machine correctly and safely.

This tractor, with standard equipment and authorized attachments, is intended to be used for farming, ranching, etc.

DO NOT use this machine for any application or purpose other than those described in this manual. Consult an authorized dealer or the Case Corporation on changes, additions or modifications that can be required for this machine to comply with various regulations and safety requirements. Unauthorized modifications will cause serious injury or death. Anyone making such unauthorized modifications is responsible for the consequences.

This Operators Manual is to be stored in the manual compartment equipped on this machine. Make sure this manual is complete and in good condition. Contact your dealer to obtain additional manuals. Contact your dealer for any further information or assistance about your machine. Your dealer has Case Corporation approved service parts. Your dealer has technicians with special training that know the best methods of repair and maintenance for your tractor.

NOTE: *The right hand and left hand side of the tractor used in this manual are the same as the right hand and left hand when sitting in the tractor seat looking forward.*

Manual Storage Compartment



RD98F146

Keep the Operators Manual in the storage compartment provided on your tractor. The Operators Manual must be available for use by all operators.

TRIM THIS EDGE

MX Series Magnum Tractors



RD98F138

MX270 MFD VERSION

TRIM THIS EDGE



RD98F148

MX270 MFD VERSION WITH FRONT & REAR DUALS



RD98F142

MX180 TWO WHEEL DRIVE

TRIM THIS EDGE

TRIM THIS EDGE

Rac 6-5344

RIGHT PAGE

PRODUCT IDENTIFICATION AND
SERIAL NUMBERS

Write your machine Model Number, Product Identification Number (P.I.N.), and Serial Numbers of major components on the lines provided. If needed, give these numbers to your dealer when you need parts or information for your machine.

1. TRACTOR MODEL NUMBER _____

2. PRODUCT IDENTIFICATION NUMBER *JJA _____ *

3. ENGINE SERIAL NUMBER _____

4. TRANSMISSION SERIAL NUMBER _____

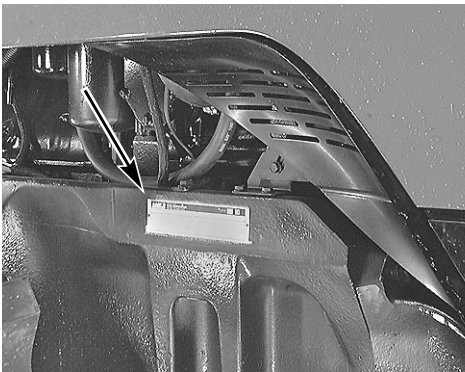
5. CAB SERIAL NUMBER _____

6. MFD AXLE SERIAL NUMBER _____

TRIM THIS EDGE

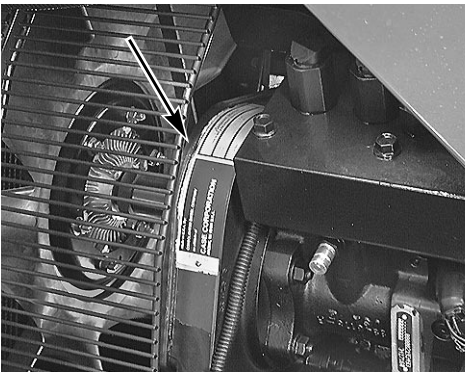
Identification Number Locations

Tractor Model and Product
Identification Number



RD98H043

Engine
Serial Number

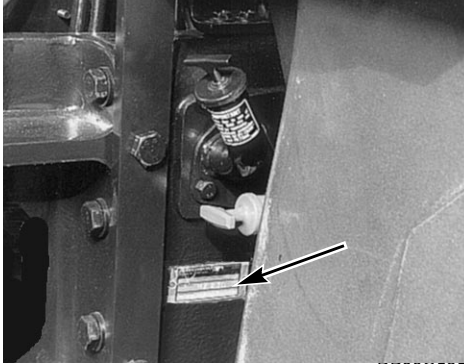


RD98H044

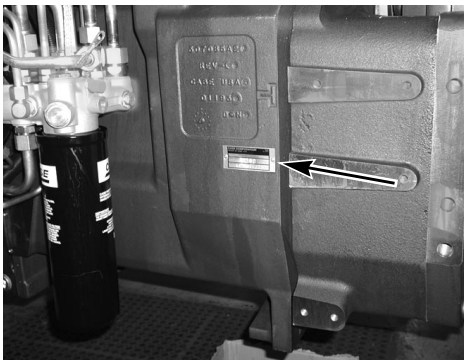
NOTE: Refer to Drawbar in Field
Operation for drawbar loading
information.

Transmission Serial Number

NOTE: The transmission serial number can be located in one of the locations shown below.



RP98G525



RD01J013

Cab Serial Number



RP98G526

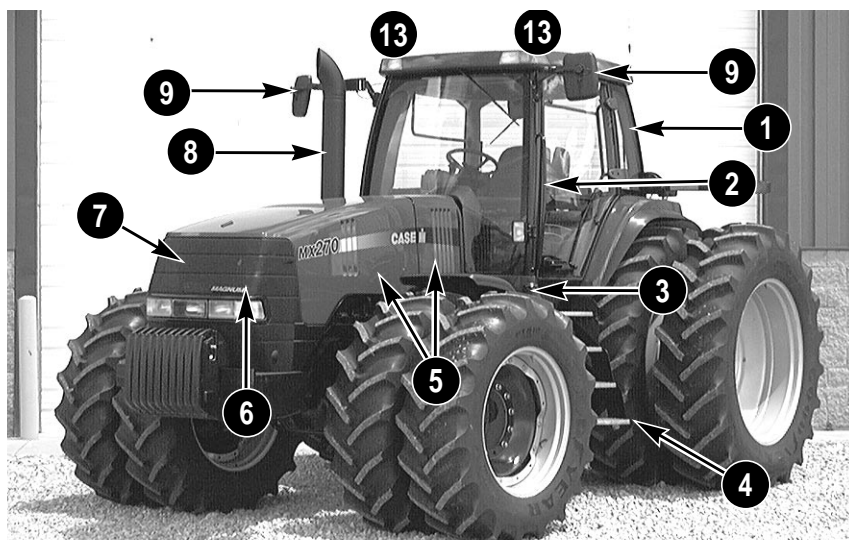
MFD Axle Serial Number



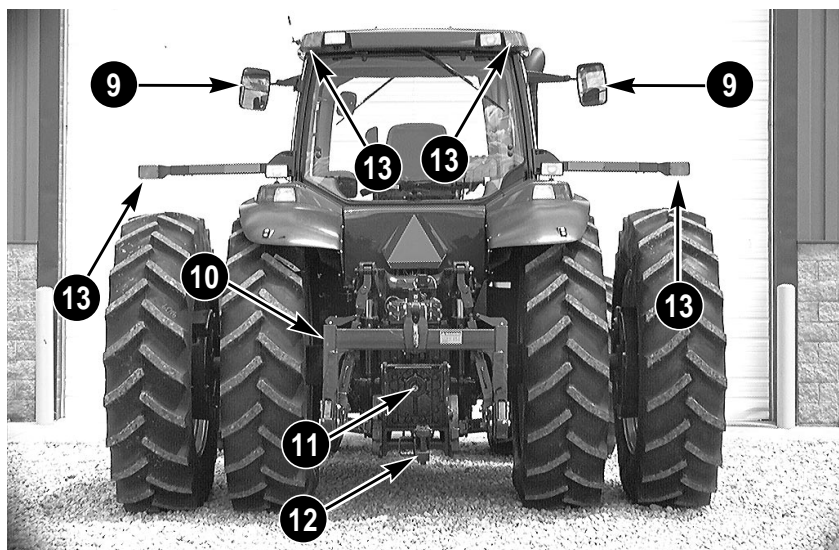
RD98H042

TRIM THIS EDGE

MACHINE COMPONENTS



RD98F148



RD98F150

- 1. ROPS CAB
- 2. HAND RAIL
- 3. FUEL TANK
- 4. STEPS
- 5. HOOD AND SERVICE DOOR
- 6. OIL COOLER, CONDENSER/FUEL COOLER

- 7. RADIATOR
- 8. EXHAUST STACK
- 9. REAR VIEW MIRRORS
- 10. REAR HITCH
- 11. POWER TAKEOFF
- 12. DRAWBAR
- 13. WARNING LAMPS

SAFETY

Read and comply with the operators manual and safety instructions before operating the machine.

Understand that your safety and the safety of other persons is measured by how you service and operate this machine. Know the positions and operation of all controls before you try to operate. **MAKE SURE YOU CHECK ALL CONTROLS IN A SAFE AREA BEFORE STARTING YOUR WORK.**

READ THIS MANUAL COMPLETELY and make sure you understand the controls. All equipment has a limit. Make sure you understand the speed, brakes, steering, stability, and load characteristics of this machine before you start to operate.

The safety information given in this manual does not replace safety codes, insurance needs, federal, state, and local laws. Make sure your machine has the correct equipment required by local laws and regulations.

CASE CORPORATION is continuing to work for your safety by making tractors with better protection and by giving these rules for safe operation.



THIS SAFETY ALERT SYMBOL INDICATES IMPORTANT SAFETY MESSAGES IN THIS MANUAL. WHEN YOU SEE THIS SYMBOL, CAREFULLY READ THE MESSAGE THAT FOLLOWS AND BE ALERT TO THE POSSIBILITY OF DEATH OR SERIOUS INJURY.

M171B

Safety Rules

- Before starting the engine, be sure all operating controls are in neutral or park position. This will eliminate accidental movement of the machine or start up of power driven equipment. R106E
- Operate controls only when seated in the operators seat. R137A
- Securely fasten your seat belt. Your tractor is equipped with a ROPS cab for your protection. The seat belt can help insure your safety if it is used and maintained. Never wear a seat belt loosely or with slack in the belt system. Never wear the belt in a twisted condition or pinched between the seat structural members. R271B
- A frequent cause of personal injury or death is persons falling off and being run over. Do not permit others to ride. Only one person - the operator - should be on the machine when it is in operation. R115B

TRIM THIS EDGE

Safety Rules

- Stay off slopes too steep for safe operation. Shift down before you start up or down a hill with a heavy load. Avoid “free wheeling”. R123A
- Do not drive on roads, or at high speed anywhere, with the differential lock engaged. Difficult steering will occur, and can result in an accident. In field operation, use the differential lock for traction improvement, but release for turning at row ends. R116A
- Travel speed should be such that complete control and machine stability is maintained at all times. Where possible, avoid operating near ditches, embankments and holes. Reduce speed when turning, crossing slopes, and on rough, slick, or muddy surfaces. R109B
- Collision of high speed road traffic and slow moving machines can cause personal injury or death. On roads, use flasher/lights according to local laws. Keep SMV emblem visible. Pull over to let faster traffic pass. Slow down and signal before turning off. R110E
- Brake pedals must be locked together for road travel. This will insure uniform brake application and maximum stopping ability. R112A
- For speeds up to 16 km/h (10 MPH), make sure that the weight of a trailed vehicle that is not equipped with brakes does NOT EXCEED two times the tractor weight. For speeds up to 40 km/h (25 MPH), make sure that the weight of a trailed vehicle that is not equipped with brakes, does NOT EXCEED the weight of the tractor. Stopping distance increases with increasing speed as the weight of the towed load increases, especially on hills and slopes. M814
- Extra weight and bad traction conditions such as mud or ice increase your stopping distance. Remember that liquid in the tires, weights on the machine or wheels, tanks filled with fertilizer, herbicides or insecticides - all these add weight and increase the distance you need in order to stop. R113B
- PTO driven machinery can cause serious injury. Before working on or near the PTO shaft, or servicing or clearing the driven machine, put the PTO lever in the DISENGAGE position and STOP the engine. R154A
- Whenever a PTO driven machine is in operation, the PTO guard must be in place for most operations to prevent injury to the operator or bystanders. Where attachments, such as pumps, are installed on the PTO shaft (especially if the tractor PTO guard is moved upward or removed), extended shielding equivalent to the PTO guard must be installed with the attachment. Install the PTO guard to its original position immediately when the attachment is removed. R273A

TRIM THIS EDGE

Safety Rules

- When doing stationary PTO work and dismounting from the tractor with the PTO running, keep clear of all moving parts as they are a potential safety hazard. R127A
- Never operate the engine in a closed building. Proper ventilation is required under all circumstances. R142A
- Never refuel when the engine is hot or running. Never smoke while refueling. R139C
- Hot coolant can spray out if deaeration cap is removed while system is hot. To remove deaeration cap, let system cool, turn to first notch, then wait until all pressure is released. Scalding can result from fast removal of deaeration cap. R141C
- Hydraulic oil or diesel fuel leaking under pressure can penetrate the skin and cause infection or other injury. To Prevent Personal Injury:
Relieve all pressure, before disconnecting fluid lines.
Before applying pressure, make sure all connections are tight and components are in good condition.
Never use your hand to check for suspected leaks under pressure. Use a piece of cardboard or wood for this purpose.
If injured by leaking fluid, see your doctor immediately. R149B
- Rear upset can result if pulling from wrong location on tractor. Hitch only to the drawbar. Use 3 point hitch only with the implements designed for its use - not as a drawbar. R119A
- Battery explosion and/or damage to electrical components can result from improper connection of booster batteries or charger. Connect positive to positive and negative to negative. Externally, battery acid can cause burns and blindness, and taken internally it is poison. R146B
- It is good practice to carry a fire extinguisher on the machine. Be sure that the extinguisher is properly maintained and be familiar with its proper use. R102B
- Before leaving the tractor, stop the engine, put all controls in neutral, put transmission control lever in park and remove the key from the key switch. R301A
- Do not look directly into the High Intensity Discharge Center Head Lamp. Eye damage can occur. M638
- If the tractor engine stalls, hydraulic pressure drops, and the brake pedals can be pushed to the floor. Activating BOTH pedals will engage the park brake. m768

TRIM THIS EDGE

Thank you so much for reading.
Please click the “Buy Now!”
button below to download the
complete manual.



After you pay.

You can download the most
perfect and complete manual in
the world immediately.

Our support email:

ebooklibonline@outlook.com