

# **2120, 2130, 2140 2150 Pro Tractors**

**Don 6-5390**

TRIM THIS EDGE

TRIM THIS EDGE

RIGHT PAGE






*THIS SAFETY ALERT SYMBOL INDICATES IMPORTANT SAFETY MESSAGES IN THIS MANUAL. WHEN YOU SEE THIS SYMBOL, CAREFULLY READ THE MESSAGE THAT FOLLOWS AND BE ALERT TO THE POSSIBILITY OF PERSONAL INJURY OR DEATH.*

M171B

Safety Decals on this machine use the words **Danger**, **Warning** or **Caution**, which are defined as follows:

- **DANGER:** Indicates an immediate hazardous situation which, if not avoided, will result in death or serious injury. The color associated with Danger is RED.
- **WARNING:** Indicates a potentially hazardous situation which, if not avoided, could result in serious injury. The color associated with Warning is ORANGE.
- **CAUTION:** Indicates a potentially hazardous situation which, if not avoided, may result in minor or moderate injury. It may also be used to alert against unsafe practices. The color associated with Caution is YELLOW.

Safety Decals on this machine which are ISO-two panel Pictorial type decals, are defined as follows:

- The first panel indicates the nature of the hazard.
- The second panel indicates the appropriate avoidance of the hazard.
- Background color is YELLOW.
- Prohibition symbols such as   and  if used, are RED.



**WARNING**

IMPROPER OPERATION OF THIS EQUIPMENT CAN CAUSE INJURY OR DEATH. BEFORE USING THIS EQUIPMENT, MAKE CERTAIN THAT EVERY OPERATOR:

- Is instructed in safe and proper use of the machine.
- Reads and understands the Manual(s) pertaining to the equipment.
- Reads and understands ALL Safety Decals on the equipment.
- Clear the area of other persons.
- Learns and practices safe use of equipment controls in a safe, clear area before operating this machine on a job site.

It is your responsibility to observe pertinent laws and regulations and follow Case Corporation instructions on machine operation and maintenance.

# GENERAL TABLE OF CONTENTS

<b>TO THE OWNER .....</b>	<b>1</b>
<b>IDENTIFICATION NUMBERS/MACHINE COMPONENTS .....</b>	<b>4</b>
PRODUCT IDENTIFICATION AND SERIAL NUMBERS .....	4
SERIAL NUMBER LOCATION .....	5
<b>SAFETY/DECALS .....</b>	<b>6</b>
INTENDED USE .....	6
GENERAL SAFETY AND ACCIDENT PREVENTION REGULATIONS .....	7
TRANSPORTING PASSENGERS .....	7
OPERATION .....	7
LEAVING THE TRACTOR .....	8
IMPLEMENTS .....	8
PTO OPERATION .....	8
SERVICE .....	9
HAZARDOUS CHEMICALS .....	9
BASIC RULE .....	9
<b>INSTRUMENTS/CONTROLS .....</b>	<b>10</b>
LEVERS AND PEDALS .....	10
OPERATING LAMPS AND INSTRUMENTS .....	15
SWITCHES .....	17
OPERATORS SEAT .....	20
<b>OPERATING INSTRUCTIONS .....</b>	<b>21</b>
RUN IN PROCEDURE .....	21
BEFORE STARTING THE ENGINE .....	22
STARTING THE ENGINE .....	24
USING BOOSTER BATTERIES .....	26
DRIVING THE TRACTOR .....	27
DIFFERENTIAL LOCK .....	28
MECHANICAL FRONT DRIVE (MFD) .....	29
STEERING THE TRACTOR .....	30
BRAKE VALVE FOR TRAILER .....	31
STOPPING THE TRACTOR .....	31
STOPPING THE ENGINE .....	32

TRIM THIS EDGE

I

TRIM THIS EDGE

RIGHT PAGE

<b>FIELD OPERATION .....</b>	<b>33</b>
POWER TAKE OFF (PTO) .....	33
POWER TAKE OFF GUARDS .....	34
PTO OPERATING SAFETY .....	35
REAR DRAWBAR .....	36
HEIGHT ADJUSTABLE TOW PIN ASSEMBLY .....	37
THREE POINT HITCH SYSTEM .....	38
MEASURING WHEEL SLIP .....	43
LOADS MATCHED TO TRACTOR .....	46
ROLL OVER PROTECTIVE STRUCTURE .....	47
HYDRAULIC SYSTEM .....	50
TRANSPORTING AND TOWING IMPLEMENTS .....	55
AUXILIARY VALVES .....	56
SELF SEALING BREAKAWAY COUPLING .....	62
TOWING AND TRANSPORTING TRACTOR .....	63
 <b>TIRES/WHEELS/SPACING/BALLAST .....</b>	 <b>64</b>
TIRE AND WHEEL EQUIPMENT .....	64
LOAD INDEX CHART .....	67
TIRE PRESSURES .....	68
FRONT WHEEL TREAD WIDTHS .....	70
REAR WHEEL TREAD WIDTHS .....	74
BALLASTING .....	76
 <b>LUBRICATION/MAINTENANCE .....</b>	 <b>78</b>
HOURMETER .....	79
LUBRICANT SPECIFICATIONS .....	80
LUBRICATION CHART .....	83
LUBRICATION CHART (MFD) .....	85
ENGINE OIL .....	86
TRANSMISSION HYDRAULIC OIL .....	89
MECHANICAL FRONT DRIVE (MFD) DIFFERENTIAL .....	94
PREVENTITIVE MAINTENANCE.....	96
INITIAL SERVICING.....	98
ROUTINE SERVICING SCHEDULE .....	102
10 HOURS OR DAILY .....	103
150 HOUR MAINTENANCE .....	104
300 HOUR MAINTENANCE .....	107
600 HOUR MAINTENANCE .....	110
1000 HOUR MAINTENANCE .....	111

<b>ELECTRICAL SYSTEM .....</b>	<b>115</b>
HEAD LAMPS (SEALED BEAM UNIT) .....	115
REAR WORK LAMP .....	116
DIRECTION STOP AND TAIL LAMP .....	117
FUSES .....	118
 <b>MACHINE STORAGE .....</b>	 <b>119</b>
STORAGE PREPARATION .....	119
REMOVING FROM STORAGE .....	120
 <b>SPECIFICATIONS .....</b>	 <b>121</b>
GENERAL SPECIFICATION .....	121
2120V AND 2120E SPECIFICATION .....	125
2130V AND 2130E SPECIFICATION .....	126
2140V AND 2140E SPECIFICATION .....	127
2150V AND 2150E SPECIFICATION .....	128
APPROXIMATE TRACTOR SPEEDS .....	129
APPROXIMATE DIMENSIONS 2WD VINEYARD MODELS .....	133
APPROXIMATE DIMENSIONS MFD VINEYARD MODELS .....	134
APPROXIMATE DIMENSIONS 2WD NARROW MODELS .....	135
APPROXIMATE DIMENSIONS MFD NARROW MODELS .....	136
 <b>DETAIL INDEX .....</b>	 <b>137</b>

TRIM THIS EDGE

III

TRIM THIS EDGE

RIGHT PAGE

TRIM THIS EDGE

THIS PAGE HAS BEEN LEFT BLANK INTENTIONALLY

IV

TRIM THIS EDGE

LEFT PAGE

TO THE OWNER

## 2120, 2130, 2140, 2150 Pro TRACTORS



DP98G036

Dealer Stamp



**Manufacturer:**

CASE UNITED KINGDOM LIMITED  
Wheatley Hall Road  
Doncaster  
South Yorkshire  
DN2 4PG  
ENGLAND



TRIM THIS EDGE

TRIM THIS EDGE

RIGHT PAGE

## How To Use This Manual

Read this manual before you start the engine or operate your tractor. If you need any more information, see your Case dealer.

This manual contains important information about the safe operation, adjustment and maintenance of your Case Tractor. To help you find information easily this manual has been separated into chapters, as shown in the General Table of Contents. The operation of the tractor has been separated into four main chapters:

1. INSTRUMENTS/CONTROLS - Showing the location of all controls.
2. OPERATING INSTRUCTIONS - General information for every day tractor operation, e.g. starting/stopping the tractor, operating the transmission etc.
3. FIELD OPERATION - Information for various operations specifically for use in the field, e.g. 3 point hitch, rear PTO etc.
4. TIRES/WHEELS/SPACING/BALLAST - Adjustments for various tractor operating applications, e.g. tire pressures, tread widths etc.

The maintenance of the tractor has been separated into two main chapters:

1. LUBRICATION/MAINTENANCE - Hourly service intervals.
2. ELECTRICAL SYSTEM - General electrical service information.

**IMPORTANT:** *Refer to the Detail Index at the end of this manual for locating specific items about your machine.*

The right and left of the tractor in this manual are the same as your right and left when sitting in the tractor seat looking forward.

DO NOT operate or permit anyone to operate or service this machine until you or the other persons have read this manual. Use only trained operators who have demonstrated the ability to operate and service this machine correctly and safely.

This tractor, with standard equipment and authorized attachments, is intended to be used for farming, etc.

DO NOT use this machine for any application or purpose other than those described in this manual. Consult an authorized dealer or the Case Corporation on changes, additions or modifications that can be required for this machine to comply with various country regulations and safety requirements. Unauthorized modifications will cause serious injury or death. Anyone making such unauthorized modifications is responsible for the consequences.



## Manual Storage

Keep the Operators Manual stored in the manual compartment if equipped on this machine or keep it in a safe place with other machine documentation.

Make sure this manual is complete and in good condition.

Contact your dealer to obtain additional manuals or for any further information or assistance about your machine. Your dealer has technicians with special training that know the best methods of repair and maintenance for your tractor.

**IMPORTANT:** *This operators manual is part of your tractor. If the tractor is sold, loaned or rented, the operators manual MUST go with it.*

## Declaration of Conformity

This tractor complies with the provisions of directive (89/336/EEC):

- Electromagnetic Compatibility.

TRIM THIS EDGE

IDENTIFICATION NUMBERS

PRODUCT IDENTIFICATION AND SERIAL NUMBERS

Write your machine Model number, Product Identification Number (P.I.N.), and Serial numbers on the lines provided below. If needed, give these numbers to your Case dealer when you need parts or information for your machine.

Make a record of the numbers. Keep the record and your Manufacturers Statement of Origin in a safe place. If the machine is stolen, report the numbers to your local police.

Complied in this manual are the operating and maintenance instructions for the 2120, 2130, 2140, 2150 V AND E agricultural tractor models.

When in need of service parts always supply the tractor, transmission and engine serial numbers, including prefix and suffix letters.

If information is required that is not available in this manual see your nearest authorized CASE DEALER.

Transmission Serial Number

EXAMPLE 587AB AG AF                      000100

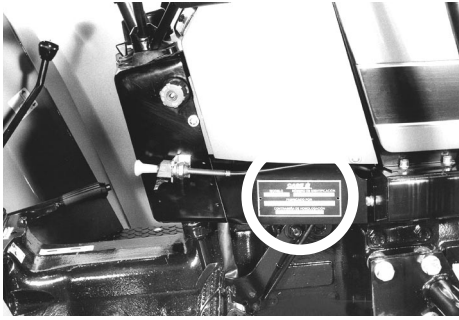
587 is the base code and the suffix letters denote the build of the unit:

1st suffix	AB = 2 wheel drive	AC = 4 wheel drive
2nd suffix	AG = ROPS	AH = CAB
3rd suffix	AC = 30 km/h	AF = 40 km/h



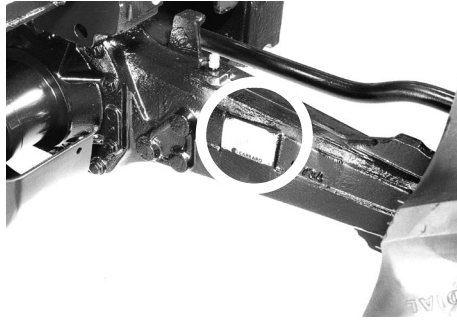
TRIM THIS EDGE

## Serial Number Location



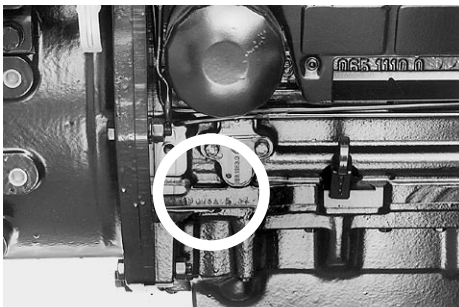
DP98B222

MODEL AND PRODUCT IDENTIFICATION  
NUMBER PLATE



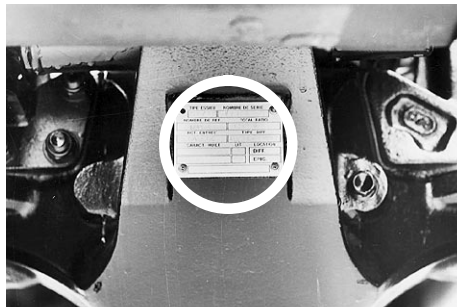
DP98B223

MFD AXLE SERIAL NUMBER PLATE  
(E MODELS)



F00401

ENGINE SERIAL NUMBER



DP98B223

TRANSMISSION SERIAL NUMBER



F00404

TRANSMISSION SERIAL NUMBER

TRIM THIS EDGE

For ready reference write the serial numbers of your machine in the spaces below.

TRACTOR MODEL NUMBER .....

PRODUCT IDENTIFICATION NUMBER .....

ENGINE SERIAL NUMBER .....

TRANSMISSION SERIAL NUMBER .....

MECHANICAL FRONT DRIVE AXLE SERIAL NUMBER .....

## SAFETY/DECALS



### SAFETY



Before operating, read and comply with the operators manual and safety instructions.

Understand that your safety and the safety of other persons is measured by how you service, and operate this machine. Know the positions and operations of all controls before you try to operate. **MAKE SURE YOU CHECK ALL CONTROLS IN A SAFE AREA BEFORE STARTING YOUR WORK.**

READ THIS MANUAL COMPLETELY and make sure you understand the controls. All equipment has a limit. Make sure you understand the speed, brakes, steering, stability, and load characteristics of this machine before you start to operate.

The safety information given in this manual does not replace safety codes, insurance needs, federal, state and local laws. Make sure your machine has the correct equipment needed by the local laws and regulations.

CASE is continuing to work for your safety: by making tractors with better protection and by giving these rules for safe operation.



**THIS SAFETY ALERT SYMBOL INDICATES IMPORTANT SAFETY MESSAGES IN THIS MANUAL. WHEN YOU SEE THIS SYMBOL CAREFULLY READ THE MESSAGE THAT FOLLOWS AND BE ALERT TO THE POSSIBILITY OF PERSONAL INJURY OR DEATH.**

M171B

## INTENDED USE

This Case tractor is designed solely for use in customary agricultural or similar operation (intended use).

Use in any other way is considered as contrary to the intended use. The manufacturer accepts no liability for any damage or injury resulting from this misuse and these risks must be born solely by the user.

Compliance with and strict adherence to the conditions of operation, service and repair as specified by the manufacturer also constitutes essential elements for the intended use.

This Case tractor should be operated, serviced and repaired only by persons familiar with all its particular characteristics and acquainted with the relevant safety rules (accident prevention).

The accident prevention regulations, all other generally recognized regulations on safety and occupational medicine and the road traffic regulations must be observed at all times.

Any arbitrary modifications carried out on the tractor will relieve the manufacturer of all liability for any resulting damage or injury.



## GENERAL SAFETY AND ACCIDENT PREVENTION REGULATIONS



- In addition to the instructions contained in this operator's manual, also observe the general safety and accident prevention regulations.
- Always comply with local traffic regulations when driving on public roads.
- Before starting work, familiarize yourself with all the controls and instruments and their functions. During work is too late.
- Start the engine only from the operator's seat.
- Never attempt to start engine by shorting across the starting motor terminals as the machine may immediately start to move.
- Before moving away, always check the immediate vicinity of the machine (e.g. for children). Ensure adequate visibility.
- Never run the engine in a closed building. Proper ventilation is required.
- Clothing worn by the operator must be close-fitting. Avoid wearing loose jackets, shirts or ties.
- Handle fuel with care as it is highly flammable. Never refuel the machine in the vicinity of naked flames or sparks. Do not smoke during refuelling.
- Always stop the engine and remove the main switch key before refuelling. Fill fuel tank outdoors. Clean up any spilled fuel immediately.
- Prevent fires by keeping the machine clean.
- Take care when handling battery acid (toxic and corrosive).



## TRANSPORTING PASSENGERS



- Passengers may only be carried if a proper passenger seat is fitted.
- The carrying of passengers is otherwise not permitted.



## OPERATION



- Always adapt your ground speed to the ground conditions. Avoid making sharp turns when driving up or down slopes or when driving across the slope. Do not attempt to turn the machine with the differential lock engaged. When driving down slopes, never depress the clutch and change gear.
- Attach trailers and/or implements correctly. The operating, steering and braking behavior will be affected by attaching implements, trailers and ballast weights. Therefore ensure adequate steering and braking power.
- Observe maximum permissible axle loads and total weights.
- When making turns with towed or mounted implements, always take into consideration the width and inertia of the implement.

Thank you so much for reading.  
Please click the “Buy Now!”  
button below to download the  
complete manual.



After you pay.

You can download the most  
perfect and complete manual in  
the world immediately.

Our support email:

[ebooklibonline@outlook.com](mailto:ebooklibonline@outlook.com)