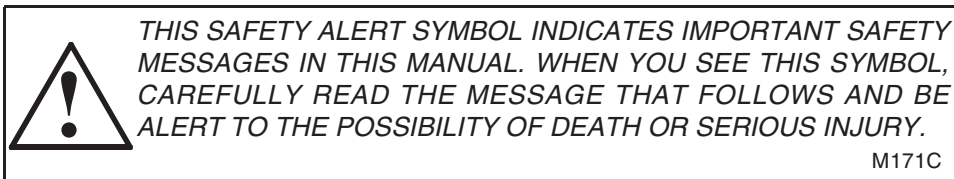


STX Series Steiger Tractors STX275 and STX325

Operators Manual

Rac 6-6231








If Safety Decals on this machine use the words **Danger, Warning or Caution**, which are defined as follows:

- **DANGER:** Indicates an immediate hazardous situation that, if not avoided, will result in death or serious injury. The color associated with Danger is RED.
- **WARNING:** Indicates a potentially hazardous situation that, if not avoided, could result in death or serious injury. The color associated with Warning is ORANGE.
- **CAUTION:** Indicates an potentially hazardous situation that, if not avoided, may result in minor or moderate injury. It may also be used to alert against unsafe practices. The color associated with Caution is YELLOW.

If Safety Decals on this machine are ISO two panel Pictorial, decals are defined as follows:

- The first panel indicates the nature of the hazard.
- The second panel indicates the appropriate avoidance of the hazard.
- Background color is YELLOW.
- Prohibition symbols such as   and  if used, are RED.



WARNING

IMPROPER OPERATION OF THIS MACHINE CAN CAUSE DEATH OR SERIOUS INJURY. BEFORE USING THIS MACHINE, MAKE CERTAIN THAT EVERY OPERATOR:

- Is instructed in safe and proper use of the machine.
- Reads and understands the Manual(s) pertaining to the machine.
- Reads and understands ALL Safety Decals on the machine.
- Clears the area of other persons.
- Learns and practices safe use of machine controls in a safe, clear area before operating this machine on a job site.

It is your responsibility to observe pertinent laws and regulations and follow Case Corporation instructions on machine operation and maintenance.

GENERAL TABLE OF CONTENTS

1-TO THE OWNER	1
PRODUCT IDENTIFICATION AND SERIAL NUMBERS	3
CHEMICAL TANK MOUNTING	6
BUSINESS BAND RADIOS	7
2-SAFETY/DECALS	9
SAFETY	9
SAFETY DECALS	12
ROLL OVER PROTECTIVE STRUCTURE (ROPS)	16
SEAT BELTS	18
TRACTOR WARNING LAMPS AND SMV SYMBOL	19
IMPLEMENT WARNING LAMPS AND SMV SYMBOL	20
SAFETY CHAIN	20
3-OPERATING CONTROLS	21
TRACTOR ACCESS	21
OPERATORS SEAT WITH AIR SUSPENSION	23
STEERING COLUMN CONTROLS	26
STEERING COLUMN ADJUSTMENT	27
FOOT PEDALS	28
CENTER CONSOLE CONTROLS	29
RH ARMREST CONTROL CONSOLE	31
REMOTE VALVE FUNCTION CONTROL	34
ARM REST CONTROL CONSOLE ADJUSTMENT (IF EQUIPPED)	40
UPPER CONSOLE CONTROLS	40
STANDARD HVAC CONTROL SYSTEM	44
AUTOMATIC CLIMATE CONTROL OPERATION (IF EQUIPPED)	45
AUTOMATIC CLIMATE CONTROL OPERATION	47
DEFOG CONTROL OPERATION	47
TROUBLESHOOTING THE HVAC CONTROL SYSTEM	47
4-INSTRUMENTATION	53
ROPS POST INSTRUMENT CLUSTER	53
PROGRAMMING THE DISPLAY MONITOR	56
INSTRUMENT PANEL BACKLIGHT INTENSITY	57
CHANGING THE REMOTE VALVE EXTEND/RETRACT VALUES (IF EQUIPPED)	57
CHANGING TIRE RADIUS	58
RADAR SENSOR CALIBRATION	58
RADAR CALIBRATION PROCEDURE	58
TIRE AVERAGE ROLLING RADIUS CHART	60
DYNAMIC ROLLING RADIUS	60
STEERING CONTROLLER CALIBRATION	61
CRITICAL WARNING DISPLAYS	64
NON-CRITICAL WARNING DISPLAYS	64
DIAGNOSTIC WARNING DISPLAYS	66
INFORMATION WARNING DISPLAYS	67
5-OPERATING INSTRUCTIONS	77
BEFORE STARTING THE ENGINE	77
RUN-IN PROCEDURE	77
ENGINE OVERSPEED	78
SEAT BELT	78
NORMAL ENGINE STARTING PROCEDURE	79
STOPPING THE ENGINE	81
COLD TEMPERATURE OPERATION	82
TOWING THE TRACTOR	86

TRANSPORTING THE TRACTOR	87
FRONT STEERING OPERATION (IF EQUIPPED)	88
COMBINATION STEERING OPERATION	88
CRAB STEERING	88
ARTICULATION ONLY STEERING OPERATION	88
STEERING DISPLAY MONITOR	88
POWERSHIFT TRANSMISSION OPERATION (IF EQUIPPED)	89
24-SPEED TRANSMISSION OPERATION (IF EQUIPPED)	93
DIFFERENTIAL LOCK (IF EQUIPPED)	95
CONSTANT ENGINE SPEED OPERATION (IF EQUIPPED)	96
6-FIELD OPERATION	97
OPERATING THE POWER TAKEOFF (PTO)	99
STANDARD DRAWBAR	101
THREE POINT HITCH PREPARATION	106
HITCH COUPLER - CATEGORY III OR IV-N	111
HITCH OPERATION	115
REMOTE HYDRAULICS	123
AUXILIARY IMPLEMENT POWER CONNECTIONS	134
7-IN FIELD PERFORMANCE	137
TRACTOR BALLAST	137
FRONT AND REAR SUITCASE WEIGHTS	143
FRONT SUITCASE WEIGHT, TIE BOLT AND CLAMP INSTALLATION	144
WHEEL WEIGHTS	146
WHEEL WEIGHT BOLT TORQUE	146
TIRE AND RIM SERVICE	147
TIRE PRESSURE FOR MAXIMUM TIRE LOAD AT RATED INFLATION	150
WHEEL BOLT TORQUES	153
WHEEL OFFSET DIRECTION CHANGE	153
8-LUBRICATION/FILTERS/FLUIDS/MAINTENANCE	161
LUBRICATION AND MAINTENANCE	161
PLASTIC AND RESIN PARTS	161
LUBRICANTS AND CAPACITIES	161
ENGINE LUBRICATION	162
GRILLE AND HOOD ACCESS	164
LUBRICATION AND MAINTENANCE CHART	166
AIR INDUCTION SYSTEM	189
9-ELECTRICAL SYSTEM	209
SPECIFICATIONS	209
GENERAL SERVICE INFORMATION	215
DIESEL ENGINE	217
10-SPECIFICATIONS	217
TRACTOR WEIGHTS	219
TRAVEL SPEEDS (MPH)	220
TRAVEL SPEEDS (KPH)	221
APPROXIMATE TRAVEL SPEEDS (KPH)	222
APPROXIMATE TRAVEL SPEEDS (MPH)	223
APPROXIMATE OVERALL MEASUREMENTS	224
DETAIL INDEX	225

GENERAL INFORMATION

INTRODUCTION TO THIS MANUAL

This manual contains important information about the safe operation, adjustment and routine maintenance of your Case STX 275 and STX 325 Series Steiger Tractors. The manual is divided into ten sections as outlined in the General Table of Contents Page(s). Refer to the Detail Index at the end of this manual for locating specific items about your tractor.

Use this manual as a guide. Your tractor will remain a reliable working machine as long as it is kept in good working condition and serviced properly.

Read this manual before you start the engine or operate this tractor. If any information in this manual is not understood, or if you need more information or assistance, contact your dealer. All persons training to operate, or who will be operating this tractor, should be old enough to possess a valid local vehicle operating permit (or other applicable local age requirement) and must have demonstrated the ability to operate and service the tractor correctly and safely.

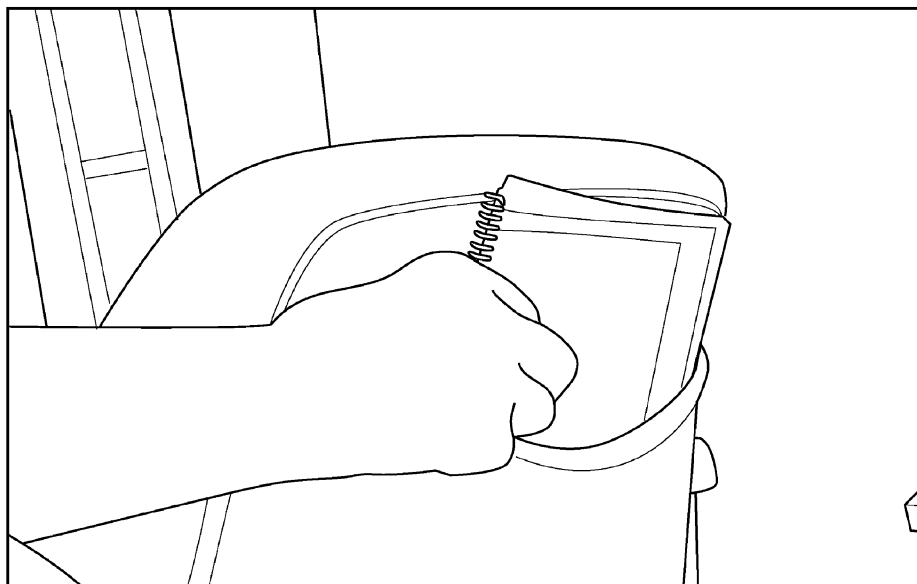
If your tractor requires replacement parts, do not use unauthorized parts or substitute materials. Case Corporation dealers stock Case approved service parts and have technicians with special training that know the best methods of repair and maintenance for your tractor.

STATEMENT OF TRACTOR INTENDED USE

The Steiger STX Series Tractor, with standard equipment and authorized attachments, is intended to be used for customary farming, land leveling and related agriculture operations.

Installation of utility (dozer) blades, front loaders or push bars on the tractor is not recommended. Any tractor damage resulting from the installation and/or use of such equipment is not covered by the tractor warranty.

OPERATOR MANUAL STORAGE COMPARTMENT



MK99H025

DO NOT permit anyone to operate or service this tractor until you or other operators have read this manual. The Operators Manual is a part of your tractor and must be available to all operators. Make sure the manual is complete and in good condition.

Store the Operators Manual and other important tractor information in the storage compartment provided on the rear side of the seat backrest.

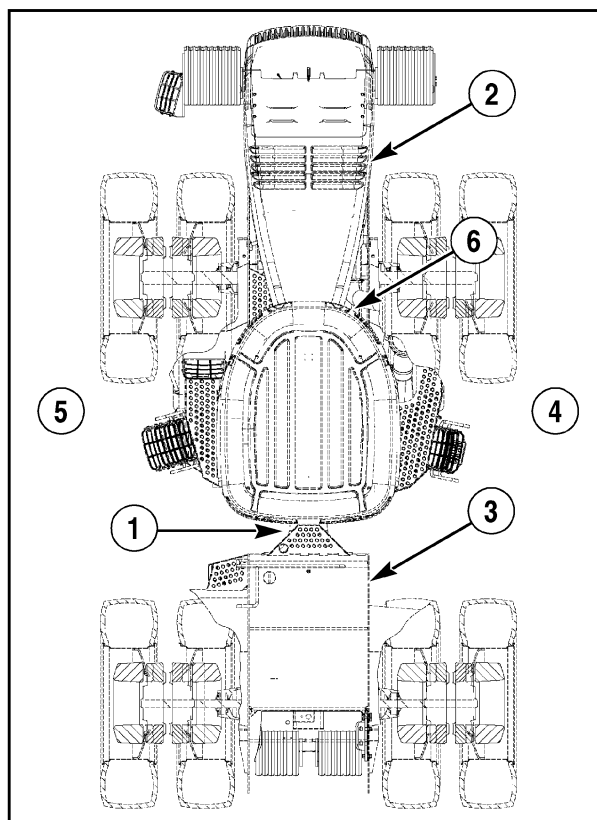
TRACTOR ORIENTATION

The STX Series Steiger Tractor is classified as a four-wheel drive articulating vehicle. The standard tractor consists of front and rear frame assemblies that steer by pivoting at the center articulation joint (1).

The standard tractor front frame (2) incorporates the engine, front axle, transmission and cab. The rear frame (3) incorporates the rear axle and fuel tank.

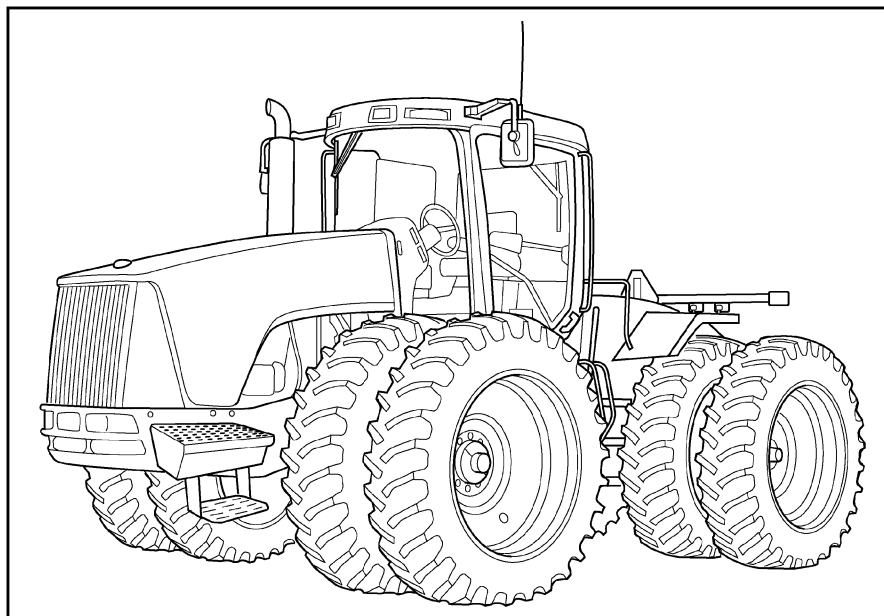
The STX 275 - STX 325 *ACCUSTEER*TM tractor consists of a front frame articulation joint (6) and a rear frame articulation joint (1).

The right hand (RH) (4) and left hand (LH) (5) side of the tractor as used in this manual are the same as your right hand and left hand when sitting in the operators seat looking forward over the engine.



MA00A013

STX SERIES STEIGER TRACTOR



MK99M015

MODELS STX 275 - STX 325 TRACTORS

PRODUCT IDENTIFICATION AND SERIAL NUMBERS

Write your machine Model Number, Product Identification Number (P.I.N.) and Serial Numbers of major components on the lines provided. If needed,

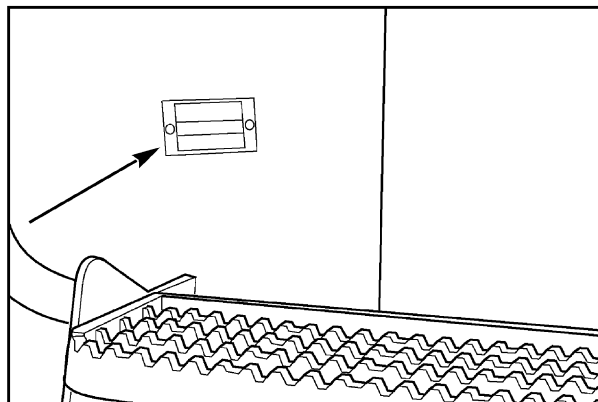
give these numbers to your dealer when you need parts or information for your machine.

TRACTOR MODEL AND PRODUCT IDENTIFICATION NUMBERS

Model: _____

P.I.N. * JEE: _____

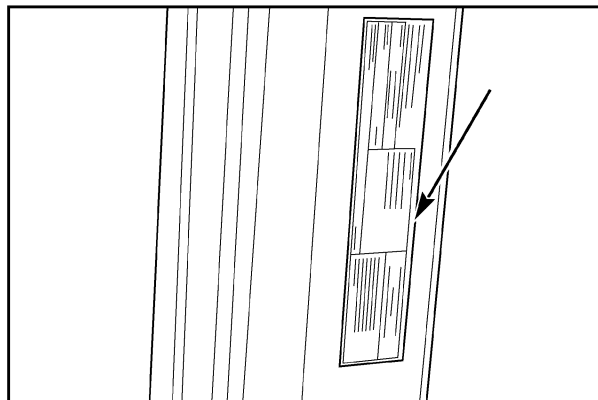
Located on rear side of LH front fender



MK98N038

ROPS SERIAL NUMBER

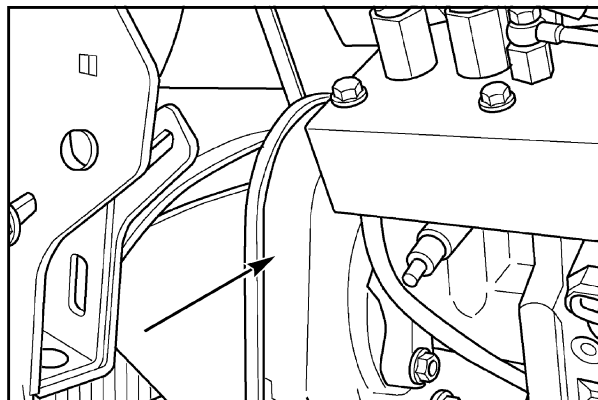
Located under the cover of the LH front ROPS post.



MK01G271

ENGINE SERIAL NUMBER

Located on front LH side of engine.

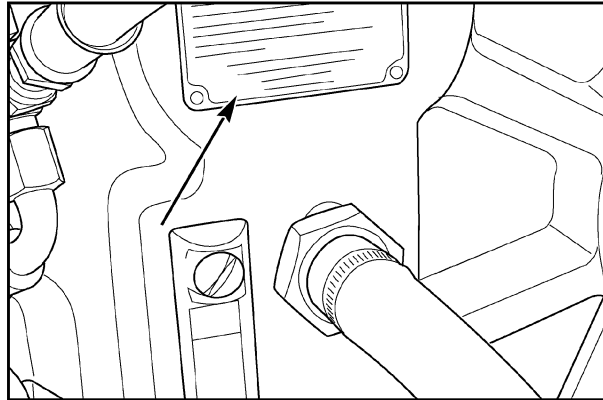


MK99K053

1-TO THE OWNER

TRANSMISSION SERIAL NUMBER

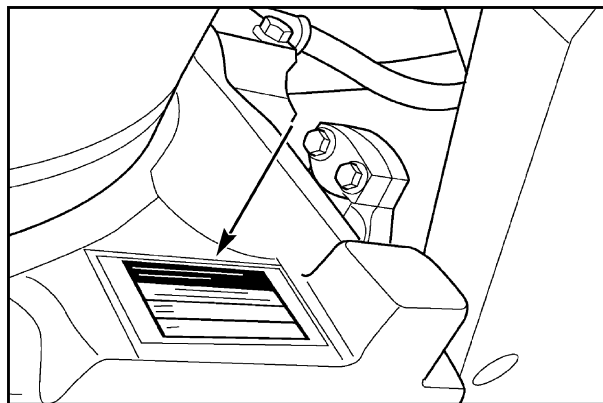
Located on the LH rear side of the transmission.



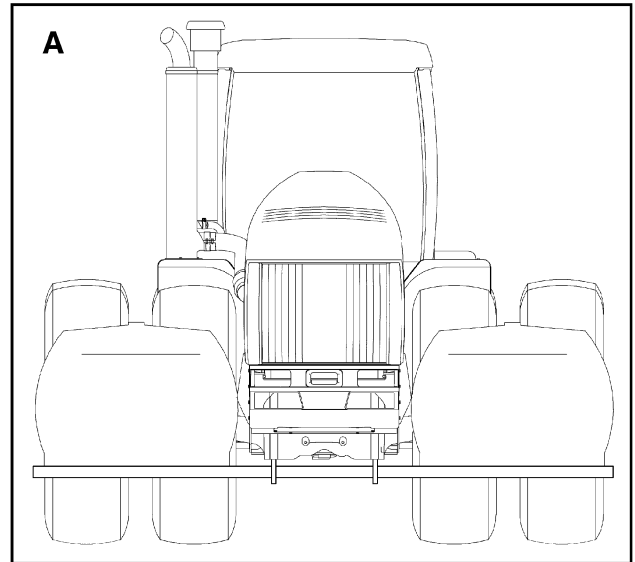
MK98C005

AXLE SERIAL NUMBER

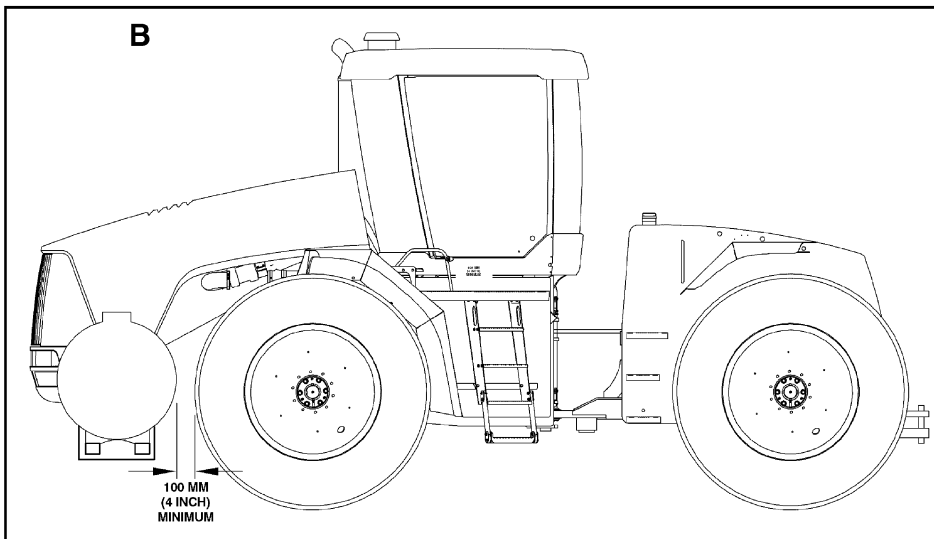
Located on the side of the front and rear axle center housing.



MK99K097

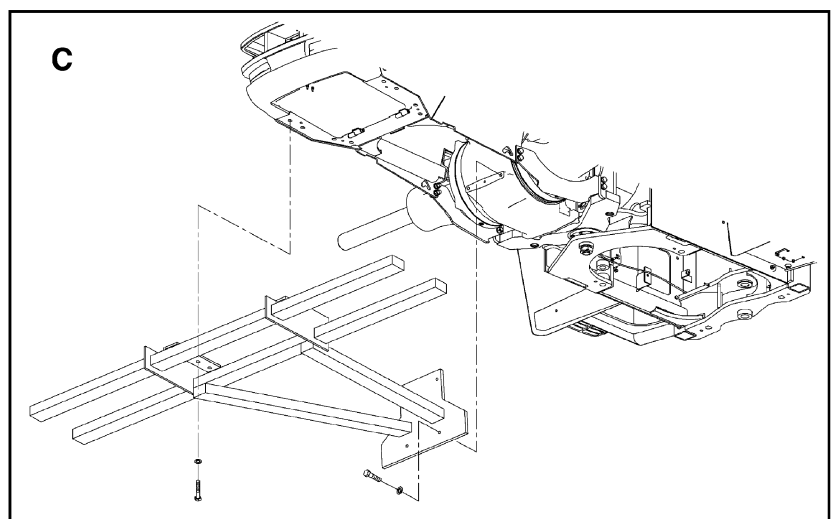


MA00K025



100 MM
(4 INCH)
MINIMUM

MA00K026



MA00K027

CHEMICAL TANK MOUNTING



WARNING: ADDITIONAL CARE MUST BE TAKEN WHEN OPERATING A TRACTOR WITH CHEMICAL TANKS. OPERATING, HANDLING AND BRAKING PERFORMANCE OF THE TRACTOR MAY BE AFFECTED. AVOID HIGH SPEED OPERATION. TRAVEL SPEED SHOULD BE SUCH THAT COMPLETE CONTROL AND MACHINE STABILITY IS MAINTAINED AT ALL TIMES

M418

Chemical tanks and mounting are not factory supplied. Chemical tanks can be mounted on each front side of the tractor. The maximum tank capacity for side mounted installation is two 300 gallon (1136 liter) tanks.

To avoid structural damage, vendor supplied chemical tanks must be installed according to the following instructions:

1. Side mounted chemical tanks must be mounted in pairs with a rigid structure supporting both tanks (A). Side tanks must be interconnected so that the fluid level is the same in both tanks at all times.
2. Chemical tanks must be mounted as close to the front axle as possible. Front wheel tread setting is not affected by side tank installation, however the shape and/or size of the tanks can be affected by the required 100 mm (4 inch) minimum clearance in front of the tires (B).
3. The tank support structure must be attached to the front frame belly pan in the same location as the front suitcase weight support frame using class 10.9 fasteners (C).

IMPORTANT: *The tanks MUST NOT be individually supported by the tractor side frames.*

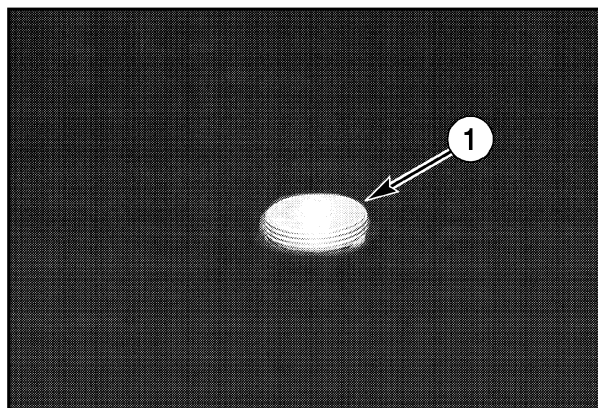
4. To reduce the dynamic forces associated with chemical tanks, the tank support structure must also have a rigid type brace extending from each side of the tank support structure to the front side of the front axle center housing. Use the existing pre-drilled and tapped 20 mm holes in the center housing to attach the braces using class 10.9 fasteners (C).
5. Front tanks must be mounted to allow the cleanout trap door to open and allow unrestricted access to all service points.
6. Refer to the Tire Load And Inflation Tables in this manual for the correct tire size and load capacity for your application. Tires must be inflated to the correct load capacity to support the added weight. To avoid exceeding tire load capacity, remove all front wheel weights.
7. Each U.S. gallon (3.8 liter) of tank capacity will add approximately 14 lb (6.3 Kg) to the front axle weight and decrease rear axle weight. DO NOT exceed tire or tractor maximum operating weights.

IMPORTANT: *Tanks filled to capacity must not be used as primary ballast for heavy tillage operation.*

NOTE: *A generic chemical tank support structure is illustrated only to show acceptable attaching points. Final support structure design and testing is the responsibility of the manufacturer.*

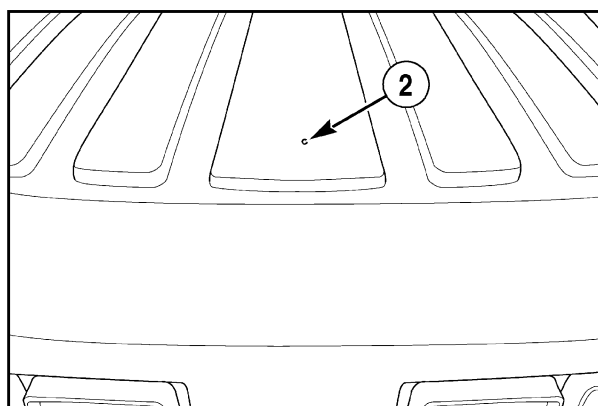
BUSINESS BAND RADIOS

Provisions for installing business band radios have been provided for tractors equipped with the Deluxe cab. The antenna mast mounting threaded spud (1) and antenna lead wire are factory installed in the roof of the cab approximately 2 inches (50 mm) under the cab roof.



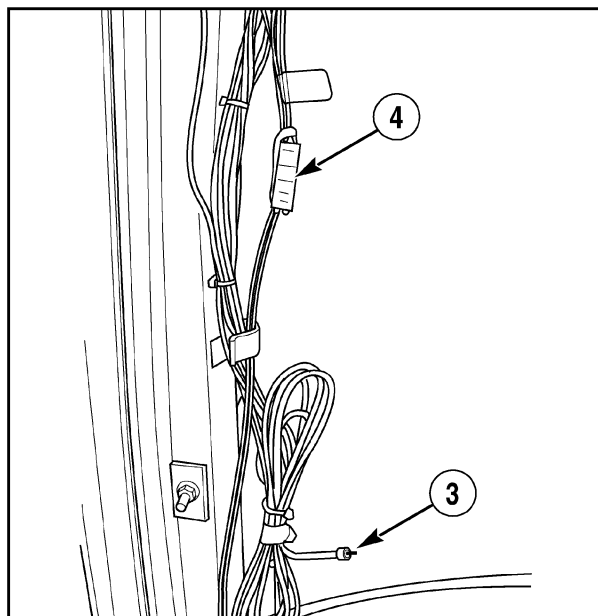
MK00E040

A locating dimple (2) in the cab roof marks the location for drilling the hole for the antenna mast.



MK00E007

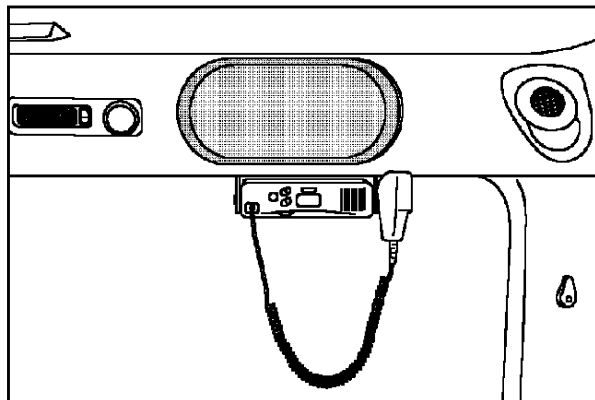
The radio antenna lead wire (3) and power and ground connector (4) are located under the right side rear ROPS post trim cover.



MK00E041

1-TO THE OWNER

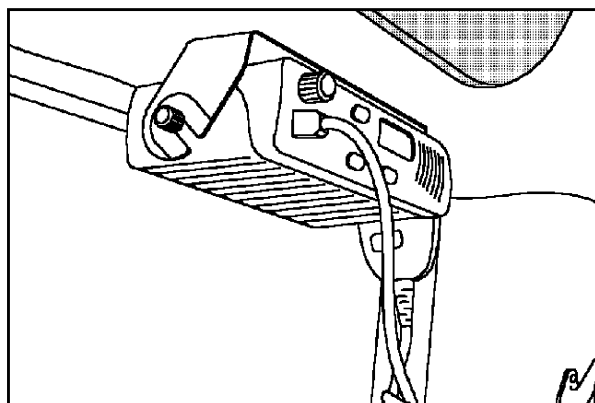
The recommended location for mounting the business band radio is under the RH stereo speaker box. The mounting bracket supplied with the radio must be used.



RI01009

If necessary, the stereo speaker may be removed to install the radio mounting bracket.

NOTE: See your dealer for additional information and procedures for installing a business band radio.



RI01D008

SAFETY

Understand that your safety and the safety of other persons is measured by how you service and operate this machine. Know the positions and operation of all controls before you try to operate. **MAKE SURE YOU CHECK ALL CONTROLS IN A SAFE AREA BEFORE STARTING YOUR WORK.**

READ THIS MANUAL COMPLETELY and make sure you understand the controls. All equipment has limits. Make sure you understand the speed, brakes, steering stability and load characteristics of this machine before you start to operate.

The safety information given in this manual does not replace safety codes, insurance needs, federal, state and local laws. Make sure your machine has the correct equipment needed by the local laws and regulations.

Case Corporation is continuing to work for your safety by making tractors with better protection and by providing these rules for safe operation.



WARNING: THIS SAFETY ALERT SYMBOL INDICATES IMPORTANT SAFETY MESSAGES IN THIS MANUAL. WHEN YOU SEE THIS SYMBOL, CAREFULLY READ THE MESSAGE THAT FOLLOWS AND BE ALERT TO THE POSSIBILITY OF PERSONAL INJURY OR DEATH.

SM171B



Safety Rules



- Always sound horn before starting the tractor.
- Before starting the engine, be sure all operating controls are in neutral or park lock position. This will eliminate accidental movement of the machine or start up of power driven equipment. R106E
- Operate controls only when seated in the operators seat. R137A
- Securely fasten your seat belt. Your machine is equipped with a ROPS cab, ROPS canopy or ROPS frame for your protection. The seat belt can help insure your safety if it is used and maintained. Never wear a seat belt loosely or with slack in the belt system. Never wear the belt in a twisted condition or pinched between the seat structural members. Inspect seat belt webbing, buckle and retractors to ensure they are not damaged. If damage is apparent, repair before operating the tractor. M437A
- A frequent cause of death or serious injury is persons falling off machinery and being run over. Keep cab door closed. Instructional seat is used only for instructing or service diagnosing only. DO NOT permit others to ride, especially children. Seat belt (if equipped) must be worn at all times. M488C
- Before leaving the tractor, stop the engine, put all controls in neutral or park lock position, remove the key from the key switch. R301B
- Stay off slopes too steep for safe operation. Shift down before you start up or down a hill with a heavy load. Avoid "free wheeling". R123A
- Do not drive on roads, or at high speed anywhere, with the differential lock engaged. Difficult steering will occur and can result in an accident. In field operation, use the differential lock for traction improvement, but release for turning at row ends. R116A
- Travel speed should be such that complete control and machine stability is maintained at all times. Where possible, avoid operating near ditches, embankments and holes. Reduce speed when turning, crossing slopes, and on rough, slick or muddy surfaces. R109B



Safety Rules



- Collision of high speed road traffic and slow moving machines can cause personal injury or death. On roads, use flasher lights according to local laws. Keep SMV emblem visible. Pull over to let faster traffic pass. Slow down and signal before turning off. R110E
- Make sure that the weight of a trailed vehicle that is not equipped with brakes, NEVER EXCEEDS the weight of the machine that is towing the vehicle. Stopping distance increases with increasing speed as the weight of the towed load increases, especially on hills and slopes. R114B
- Extra weight and bad traction conditions such as mud or ice increase your stopping distance. Remember that liquid in the tires, weights on the machine or wheels, tanks filled with fertilizer, herbicides or insecticides - all these add weight and increase the distance you need in which to stop. R138B
- PTO driven machinery can cause serious injury. Before working on or near the PTO shaft, or servicing or clearing the driven machine, put the PTO lever in the DISENGAGE position and STOP the engine. R154A
- Whenever a PTO driven machine is in operation, the PTO guard must be in place for most operations to prevent injury to the operator or bystanders. Where attachments, such as pumps, are installed on the PTO shaft (especially if the tractor PTO guard is moved upward or removed), extended shielding equivalent to the PTO guard must be installed with the attachment. Install the PTO guard to its original position immediately when the attachment is removed. R273A
- When doing stationary PTO work and dismounting from the tractor with the PTO running, keep clear of all moving parts as they are a potential safety hazard. R127A
- When doing stationary PTO work, install the front and rear frame articulation block to prevent accidental articulation of the tractor. Put the transmission control lever in the park position or apply the park brake. R298B
- Never operate the engine in a closed building. Proper ventilation is required under all circumstances. R142A
- Never refuel the machine when the engine is hot or running. Never smoke while refueling. R139C
- Check and service cooling system according to the maintenance instructions. Hot coolant can spray out if the deaeration tank cap is removed while system is hot. To remove the deaeration tank cap, let system cool, turn to first notch, then wait until all pressure is released. Scalding can result from fast removal of the cap. R141C
- Hydraulic oil or diesel fuel leaking under pressure can penetrate the skin and cause infection or other injury.
To Prevent Personal Injury:
Relieve all pressure before disconnecting fluid lines.
Before applying pressure, make sure all connections are tight and components are in good condition.
Never use your hand to check for suspected leaks under pressure.
Use a piece of cardboard or wood for this purpose. If injured by leaking fluid, see your doctor immediately. R149B
- Battery explosion and/or damage to electrical components can result from improper connection of booster batteries or charger. Connect positive to positive and negative to negative. Externally, battery acid can cause burns and blindness, and taken internally it is poisonous. R146B
- It is good practice to carry a fire extinguisher on the machine. Be sure that the extinguisher is properly maintained and be familiar with its proper use. R102B
- Clean tractor of field trash daily or more frequently depending upon conditions. Trash accumulation on the tractor can cause damage and fire. M791

Thank you so much for reading.
Please click the “Buy Now!”
button below to download the
complete manual.



After you pay.

You can download the most
perfect and complete manual in
the world immediately.

Our support email:

ebooklibonline@outlook.com