

High-Tech
**CASE CS110, CS120,
CS130, CS150 Tractors**

Operating Manual

Sva 7-4890



High-Tech tractors

CASE CS110, CS120, CS130, CS150

Sva 7-4890

TRIM THIS EDGE

TRIM THIS EDGE

RIGHT PAGE



THIS WARNING SYMBOL POINTS TO IMPORTANT SAFETY NOTES IN THIS MANUAL. WHEN THIS SYMBOL APPEARS, THE SUBSEQUENT NOTES ARE TO BE READ THROUGH CAREFULLY IN ORDER TO MAKE YOU AWARE OF POSSIBLE DANGER OF INJURY, EVEN RESULTING IN DEATH. M171B

The safety labels on this machine uses the words **danger, warning or caution**. These terms are defined as follows:

- **DANGER:** This indicates an immediately impending danger situation which, if not avoided, can lead to death or serious injury. The colour allocated to the term "danger" is RED.
- **WARNING:** This term indicates a possible impending danger situation which, if not avoided, can lead serious injury. The colour connected to the term "warning" is ORANGE.
- **CAUTION:** This term indicates a possible impending danger situation which, if not avoided, can lead to slight or medium injuries. The term can also be used to warn against unsafe practices. The colour connected to the term "caution" is YELLOW.

TRIM THIS EDGE



WARNING

OPERATING THIS MACHINE INCORRECTLY CAN LEAD TO INJURY OR DEATH. MAKE SURE THAT EACH DRIVER HAS MET THE FOLLOWING REQUIREMENTS BEFORE USING THIS MACHINE:

- He must be trained in the safe and correct use of the machine.
- He must have read and understood the manual (manuals) referring to the machine.
- He must have read and understood ALL safety labels on the machine.
- He has turned away all persons from the working area.
- He must have studied and practiced the safe usage of the machines control elements in a safe and open training field before using this machine in the working environment.

It is your responsibility to pay attention to the relevant laws and guidelines and the notes of Case Steyr Landmaschinentechnik AG concerning working with this machine and its subsequent servicing.

TRIM THIS EDGE

LEFT PAGE

TABLE OF CONTENTS

TO THE USER	1
AGGREGATE/SERIAL NUMBERS.....	4
PRODUCT IDENTIFICATION AND SERIAL NUMBER.....	4
SAFETY/SAFETY PLATES.....	6
CORRECT USAGE.....	6
GENERAL SAFETY REGULATIONS.....	7
CARRIAGE OF PASSENGERS	7
DRIVING	7
LEAVING THE TRACTOR.....	8
ATTACHMENTS.....	8
PTO SHAFT OPERATION.....	8
MAINTENANCE AND OTHER WORK	9
DANGEROUS CHEMICALS.....	9
GROUND RULES.....	9
SAFETY LABELS	10
INSTRUMENTS/OPERATING CONTROLS.....	15
CLIMBING ONTO THE TRACTOR.....	15
DRIVER'S SEAT.....	16
OPERATING CONTROLS.....	35
DRIVING	57
BEFORE STARTING THE ENGINE	57
BATTERY MASTER SWITCH	
(If fitted)	58
SAFETY SWITCH.....	58
INDICATOR LAMPS AND COMBINATION INSTRUMENT FOR OPERATING	
STATUS	59
STANDARD STARTING PROCEDURE	60
TRACTOR OPERATION AT LOW TEMPERATURES (WINTER OPERATION)	
62	
HINTS FOR DRIVING.....	65
OPERATING THE TRANSMISSION	70
STOPPING THE TRACTOR	
AND STOPPING THE ENGINE	80
CAB VENTILATION / HEATING	82
ADJUSTABLE TOWBAR.....	86
HEIGHT-ADJUSTABLE TOWBAR (If fitted)	90

I

TRIM THIS EDGE

RIGHT PAGE

TRIM THIS EDGE

AUTO HITCH WITH HOOK (If fitted)	94
.....	94
DIMENSIONS FOR TRAILERS/ EQUIPMENT DRAWBARS	98
CONNECTIONS FOR TRAILER BRAKE LINES (If fitted)	99
ADDITIONAL ELECTRICAL SOCKET	101
TRACTOR WARNING LAMPS	104
TOWING AWAY	106
TRANSPORTING THE TRACTOR	107
OPERATIONAL USE	108
CRAWLER GEAR MODE (if fitted)	108
REAR POWER TAKE OFF (PTO) SHAFT	109
OPERATING THE STEYR FRONT PTO (if fitted)	115
PREPARING THE REAR THREE-POINT LINKAGE	116
OPERATING THE DIGITAL ELECTRONIC LIFTING GEAR CONTROL – (EHR- D)	128
PREPARING THE STEYR FRONT-END LIFTING GEAR (if fitted)	139
WORKING WITH THE STEYR FRONT LIFTING GEAR	140
AUXILIARY CONTROL UNITS	142
OPERATING THE AUXILIARY CONTROL UNITS	147
DIFFERENTIAL LOCK	154
OPERATING THE 4-WHEEL DRIVE	156
OPERATING THE SPRUNG FRONT AXLE (if fitted)	158
FASTENING BRACKET FOR EXTERNAL LEVERS	160
DIGITAL TRACTOR METER SPEED CALIBRATION	161
TYRES/WHEELS/TRACK WIDTH/BALLAST	162
TYRES AND RIM FITTINGS	162
WORKING ON TYRES AND RIMS	166
ADJUSTING THE FRONT AXLE AND THE FRONT AXLE TRACK	167
ADJUSTING THE FRONT AXLE TRACK	168
ADJUSTING THE REAR AXLE TRACK WIDTH	170
4-WHEEL DRIVE – TYRE COMBINATIONS	173
FRONT WHEEL MUDGUARD – 4-WHEEL DRIVE TRACTOR (If fitted)	174
TRACTOR BALLAST	175
LUBRICATION/MAINTENANCE	182
ENVIRONMENT	182
PLASTIC AND FIBRE-GLASS RE-INFORCED PARTS	182
TOOL BOX	182

OPERATING HOURS COUNTER	183
ENGINE HOOD	184
LUBRICATION AND FILLING LEVELS	185
DAILY INSPECTIONS	194
ENGINE MAINTENANCE	199
MAINTENANCE TRANSMISSION/HYDRAULICS	209
FRONT AXLE MAINTENANCE	212
STEERING MAINTENANCE	214
FRONT PTO-SHAFT MAINTENANCE	214
BRAKE MAINTENANCE.....	215
TOWBAR MAINTENANCE	216
ELECTRICAL MAINTENANCE.....	217
FRONT PTO-SHAFT MAINTENANCE	218
FRONT HYDRAULIC MAINTENANCE.....	219
GENERAL MAINTENANCE.....	219
ELECTRICAL SYSTEM.....	222
BATTERIES.....	222
REPLACING BULBS AND LAMPS.....	225
FUSES.....	234
RELAYS.....	238
TECHNICAL DATA	240
ENGINE	240
ELECTRICAL SYSTEM.....	242
GENERAL VEHICLE DATA.....	242
DRIVING SPEEDS	246
VEHICLE WEIGHTS.....	250
VEHICLE DIMENSIONS.....	251
GLOSSARY	252

TRIM THIS EDGE

III

TRIM THIS EDGE

RIGHT PAGE

High-Tech STEYR CS130 4-wheel drive TRACTOR



SD98B026

TRIM THIS EDGE

Dealers stamp



Manufacturer:

**CASE STEYR
Landmaschinentechnik GmbH
Steyrerstrasse 32
A-4300 St. Valentin
AUSTRIA**



TRIM THIS EDGE

RIGHT PAGE

How to use this manual

This manual must be read before starting up the engine or working with your tractor. Call your retailer for further information.

This manual contains important information concerning working, setting up and maintaining your Case Steyr tractor safely. This manual is divided into individual chapters corresponding to the contents so that you can easily find information. Information concerning the tractor is divided into 4 chapters :

1. INSTRUMENTS AND CONTROLS – The arrangement of all controls is shown here.
2. WORK NOTES – General notes on daily work with the tractor e.g. starting up/turning off the tractor, operating the transmission.
3. OPERATIONAL USE – This chapter contains notes on various work uses, specifically for use with implements, e.g. three-point linkage, rear PTO etc.
4. TYRES/WHEELS/TRACK WIDTHS/BALLASTING – Settings for various tractor working scenarios are described here, e.g. tyre pressures, track widths etc.

Tractor maintenance is divided into two chapters :

1. LUBRICATION/MAINTENANCE – Regular maintenance intervals.
2. ELECTRICAL LAYOUT – General maintenance notes on electrics.

IMPORTANT: See the alphabetical index at the end of the manual in order to find a particular item in the manual concerning your machine.

Position descriptions such as in front, behind, right and left are understood to be as seen from the tractor's seat, facing in a forward direction.

Do NOT allow yourself or anyone else to drive the machine or carry out maintenance work without having read the manual. Only employ trained drivers who have shown their ability to correctly and safely work and maintain the machine.

With its standard equipment and licensed fittings, this tractor is intended for use in agriculture etc.

Do NOT use the machine for any other purpose other than those described in the manual. Get in touch with an authorized retailer or the Case Steyr Company concerning changes, additions or modifications which could be necessary for your machine to fulfill the relevant national guidelines and safety requirements. Release or approval from the manufacturer is required in the case of special bodies. Unapproved changes render product liability void.

Keeping your manual safe

Keep the operating manual in the compartment provided for that purpose on your tractor.

Ensure that this manual is complete and remains in good condition.

Ask your retailer for additional manuals or further information as well as support for your machine. Your retailer employs specially trained engineers who know the best method of repair and maintenance for your machine.



SD98B028

IMPORTANT: *This operating manual is part of your tractor. If the tractor is sold or hired out, the operating manual **MUST** be handed over with it.*

Declaration of conformity

This tractor meets the EC Electromagnetic compatibility guideline (89/336/EEC):

- and is marked with CE.

TRIM THIS EDGE

AGGREGATE/SERIAL NUMBERS

PRODUCT IDENTIFICATION AND SERIAL NUMBER

Fill in the machine type designation, the product identification number (P.I.N.) and serial number on the corresponding line below. If required, pass on this numerical data to the Case-Steyr retailer when ordering parts or making inquiries.

Write down the identification number. Records and the vehicle log book must be kept in a safe place. If the machine is stolen, these code numbers must be reported to the local police station.

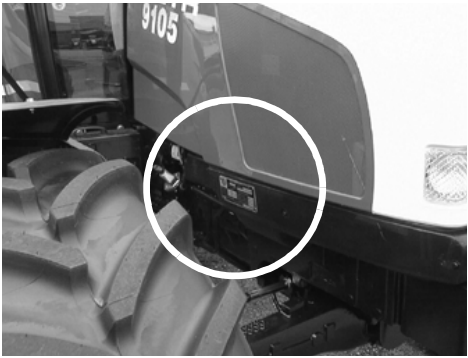
Type plate details



SS98B117

Arrangement of individual numbers

TRACTOR

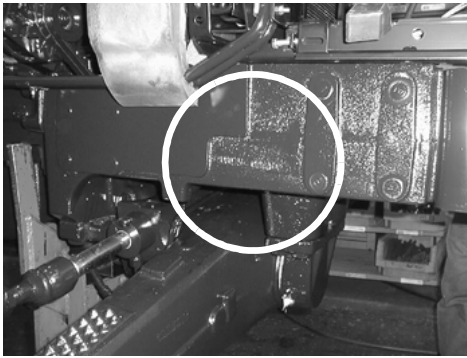


SD98D007

Type designation _____

Product identification number _____

TRACTOR



SD98B035

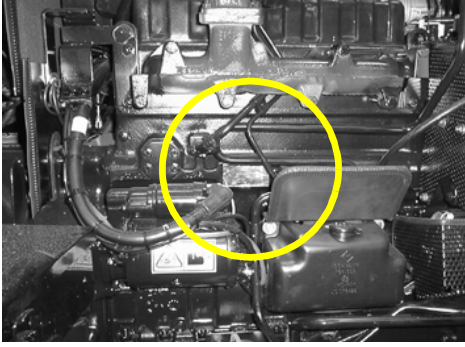
Type designation _____

Product identification number _____

TRIM THIS EDGE

AGGREGATE/SERIAL NUMBERS

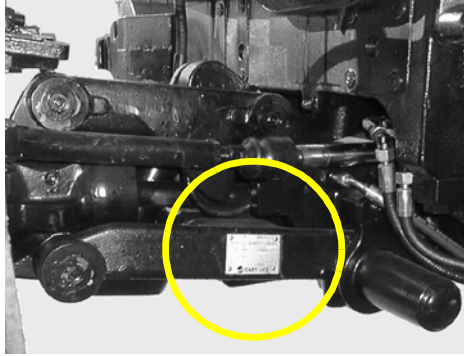
ENGINE



SD98B034

Serial No. _____

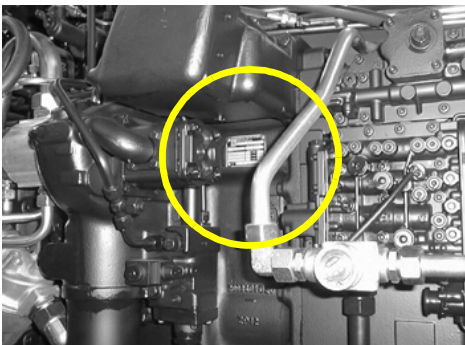
Sprung 4-WHEEL AXLE (if fitted)



SD98B059

Serial No. _____

DRIVING GEAR



SD98D008

Serial No. _____

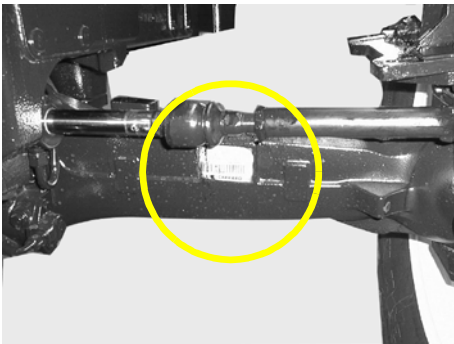
CAB



SD98B036

Serial No. _____

4-WHEEL AXLE



SD98B037

Serial No. _____

TRIM THIS EDGE

TRIM THIS EDGE

RIGHT PAGE

SAFETY/SAFETY PLATES



SAFETY



Read and observe the operating instructions and safety notes before starting.

You should be aware that your own safety and the safety of others depends on how the machine is serviced and operated. You must become acquainted with the arrangement and function of all control elements before attempting to work with the machine. **ALL CONTROL ELEMENTS MUST BE TESTED IN A SAFE AREA BEFORE STARTING WORK.**

READ THE MANUAL THOROUGHLY and ensure that you understand the purpose and function of the control elements. Each device has certain restrictions. Before work is begun, ensure that the speed, braking effect, maneuverability, stability and load ratio of this machine has been correctly estimated.

Safety regulations, insurance requirements and national, regional and local law is not replaced by the safety notes in this manual. Ensure that the machine is properly equipped according to the respective laws and guidelines.

CASE-STEYR strives towards improvements in safety: This occurs through the production of tractors with better and better safety facilities and through notes on the rules for their safe operation.



THIS SAFETY WARNING SYMBOL INDICATES IMPORTANT SAFETY NOTES IN THIS MANUAL. WHEN THIS SYMBOL APPEARS, THE SUBSEQUENT NOTES MUST BE READ THOROUGHLY AND YOU SHOULD BE AWARE OF POSSIBLE DANGER OF INJURY AND POSSIBLY DEATH.

M171B

CORRECT USAGE

This tractor is built exclusively for conventional use in agricultural, communal or similar work (correct usage).

Usage above and beyond this is considered as incorrect. The manufacturer will not accept responsibility for any resulting damages. The risk is carried solely by the user.

Strict adherence to the operating, service and maintenance requirements stipulated by the manufacturer also fall under correct usage.

This Case-Steyr tractor may only be used, serviced and maintained by capable persons who are familiar with the particular properties of the machine and who have been instructed in the corresponding safety regulations (accident prevention).

Accident prevention regulations and other general recognised safety technical, industrial health and road safety guidelines must be adhered to.

Alterations made to the machine without the manufacturer's express, written permission, will render the guarantee null and void.

**GENERAL SAFETY REGULATIONS**

- In addition to the instructions contained in these operating instructions, general safety and accident prevention regulations must be observed.
- Observe the relevant regulations when using public traffic areas.
- Familiarisation with all mechanisms and control elements and with their functions is required before starting work. It will be too late for this during the actual work.
- Before starting, check the immediate vicinity of the machine (e.g. children). Ensure your vision is not impaired.
- Never leave the engine running in enclosed areas. Sufficient ventilation is required.
- Handle fuel with great care. Increased fire hazard. Never refuel close to open flames or flying sparks. Do not smoke when refueling.
- Switch off the engine and remove the ignition key when refueling. Do not refuel in enclosed areas. Wipe off spilt fuel immediately.
- Keep the engine clean to avoid fire hazards.
- Handle battery acids with extreme caution (toxic and caustic).

**CARRIAGE OF PASSENGERS**

- Passengers may only be carried if a regulation passenger seat is fitted.
- The carriage of persons is not permitted beyond this.
- Children may only be carried if special seats are provided (available on the open market).

**DRIVING**

- Always adjust your speed to the relevant circumstances. Avoid sudden turns when driving uphill, downhill or diagonally on hillsides. Switch the differential lock OFF when driving around bends. Never disengage the clutch and change gear when travelling downhill.
- Connect trailers and/or implements correctly. Connected implements, trailers or ballast weight have a direct influence on handling characteristics, maneuverability and braking. It must therefore be ensured that you have sufficient strength for steering and braking.
- Observe the maximum additional axle loading and total tractor weight.
- When driving around bends with trailers or implements connected, take overhang and pendulum force of the equipment into consideration.



LEAVING THE TRACTOR



- When leaving the tractor, make sure that it can not roll away (apply parking brake, wheel chocks, switch off the engine).
- Remove the ignition key and lock the driver's cab (if fitted).
- As long as the engine is still running, the tractor must not be left unattended.
- Never leave the driver platform/cab while the tractor is moving.
- Lower all equipment or attachments to the ground before leaving the tractor.



ATTACHMENTS



- Special caution is necessary when attaching trailers or implements.
- Secure trailers and equipment against rolling away.
- Only operate the tractor if all safety devices are fitted and in the correct safety position.



PTO SHAFT OPERATION



- Stop the engine before attaching and detaching the universal drive shaft.
- When operating the PTO, do not allow anyone, under any circumstance to stand near the turning PTO shaft or universal drive shaft.
- Protective coverings must be mounted on the input shaft and the PTO shaft stub. See page 113.
- Equipment with high inertia does not immediately stop when the PTO shaft is switched OFF. Wait until the equipment has run down and has completely stopped before cleaning or carrying out adjustments.
- Immediately after disconnecting the universal drive shaft, the PTO shaft must be covered with a protective cap.

TRIM THIS EDGE

Thank you so much for reading.
Please click the “Buy Now!”
button below to download the
complete manual.



After you pay.

You can download the most
perfect and complete manual in
the world immediately.

Our support email:

ebooklibonline@outlook.com