

**MAXXUM 110  
MAXXUM 120  
MAXXUM 130**

**MAXXUM 115  
MAXXUM 125  
MAXXUM 140**

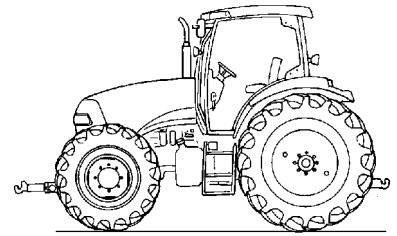
**Multi-Controller  
Tractors**

Operator's Manual

82999328

**CASE *III***

# CASE



<b>MAXXUM 110</b>	<b>Multi-controller</b>
<b>MAXXUM 120</b>	<b>Multi-controller</b>
<b>MAXXUM 130</b>	<b>Multi-controller</b>
<b>MAXXUM 115</b>	<b>Multi-controller</b>
<b>MAXXUM 125</b>	<b>Multi-controller</b>
<b>MAXXUM 140</b>	<b>Multi-controller</b>

## TRACTORS

## OPERATOR'S MANUAL



***CASE III***

## **Electro-magnetic compatibility (EMC)**

This tractor complies strictly with the European Regulations on electro-magnetic emissions.

However, interference may arise following the installation of any additional equipment, as this may not necessarily meet the required standards.

Because electromagnetic interference can seriously affect the function of the vehicle and/or give rise to dangerous situations, you **MUST** observe the following:

- Ensure that all equipment from third-party manufacturers fitted on the tractor carries the CE mark.
- The maximum output level of equipment that emits radiation (radios, telephones etc.) must not exceed the legal limits prescribed in the country in which you are operating the tractor.
- The electromagnetic field created by auxiliary equipment must never exceed 24V/m, particularly in proximity to electronic components.

Failure to comply with these requirements will render the Case IH warranty null and void.

# TABLE OF CONTENTS

## SECTION 1

### GENERAL INFORMATION AND SAFETY

END USER LICENCE AGREEMENT TERMS .....	1-2
ECOLOGY AND THE ENVIRONMENT .....	1-6
SAFETY PRECAUTIONS .....	1-7
ROLL OVER PROTECTIVE STRUCTURE .....	1-13
SAFETY LABELS .....	1-14
INTERNATIONAL SYMBOLS .....	1-19
AIRBORNE NOISE EMISSION .....	1-20

## SECTION 2

### CONTROLS, INSTRUMENTS AND OPERATION

BEFORE STARTING UP .....	2-1
CAB CONTROLS .....	2-2
PROGRAMMING THE DISPLAYS .....	2-52
GEARBOX OPERATION .....	2-58

## SECTION 3

### FIELD OPERATION

BEFORE STARTING UP .....	3-1
TOWING THE TRACTOR .....	3-3
TRANSPORTING THE TRACTOR .....	3-4
STARTING THE ENGINE .....	3-7
STOPPING THE ENGINE .....	3-10
CONSTANT ENGINE SPEED CONTROL .....	3-13
HEADLAND MANAGEMENT CONTROL (HMC) .....	3-15
TURN ASSIST STEERING ASSISTANCE (if fitted) .....	3-25
REAR PTO .....	3-27
FRONT PTO AND HYDRAULIC FRONT POWER LIFT (where fitted) .....	3-42
ELECTRONIC FRONT POWER LIFT CONTROL EFH (where fitted) .....	3-47
ELECTRONIC POWER LIFT CONTROL (EDC) .....	3-52
ELECTRO-HYDRAULIC REMOTE CONTROL VALVES .....	3-66
3-POINT POWER LIFT LINKAGE .....	3-81
LIFT RODS, LOWER AND TOP LINKS .....	3-83
DRAWBARS AND TOWING ATTACHMENTS .....	3-91
REAR TOW HITCH .....	3-96
HYDRAULIC TRAILER BRAKES .....	3-110
PNEUMATIC TRAILER BRAKES .....	3-112
FRONT WHEEL TRACK SETTING .....	3-118
REAR WHEEL TRACK SETTING .....	3-123
TRACTOR WEIGHT .....	3-130
TYRE AIR PRESSURE LEVELS AND PERMISSIBLE LOAD BEARING CAPACITIES .....	3-137

## **SECTION 4**

### **LUBRICATION AND MAINTENANCE**

GENERAL NOTES .....	4-1
LUBRICANTS AND COOLANTS .....	4-8
LUBRICATION AND MAINTENANCE TABLE .....	4-10
WHEN WARNING LIGHTS ARE ILLUMINATED .....	4-12
EVERY 10 OPERATING HOURS OR DAILY .....	4-16
EVERY 50 OPERATING HOURS .....	4-19
EVERY 100 OPERATING HOURS .....	4-26
EVERY 300 OPERATING HOURS .....	4-27
EVERY 600 OPERATING HOURS .....	4-31
EVERY 1200 OPERATING HOURS OR 12 MONTHS .....	4-38
EVERY 1200 OPERATING HOURS OR 2 YEARS .....	4-43
EVERY 3 YEARS .....	4-50
GENERAL MAINTENANCE .....	4-51
FUSES AND RELAYS .....	4-59
PROTECTION FOR ELECTRONIC AND ELECTRICAL SYSTEMS WHEN CHARGING THE BATTERY OR DURING WELDING WORK .....	4-64

## **SECTION 5**

### **TROUBLESHOOTING**

ENGINE .....	5-2
GEARBOX .....	5-5
HYDRAULICS .....	5-6
3-POINT POWER LIFT LINKAGE .....	5-7
BRAKES .....	5-8
CAB .....	5-9
ELECTRICAL SYSTEM .....	5-10

## **SECTION 6**

### **VEHICLE STORAGE**

TRACTOR STORAGE .....	6-1
-----------------------	-----

## **SECTION 7**

### **ADDITIONAL EQUIPMENT**

**SECTION 8**

**TRACTOR SPECIFICATION**

VEHICLE WEIGHTS ..... 8-6

ENGINE ..... 8-7

FUEL SYSTEM ..... 8-7

COOLING SYSTEM ..... 8-7

GEARBOX ..... 8-8

BRAKES ..... 8-8

REAR PTO ..... 8-8

FRONT PTO ..... 8-9

STEERING ..... 8-9

MAXIMUM OPERATING ANGLE ..... 8-9

HYDRAULICS SYSTEM ..... 8-9

3-POINT POWER LIFT ..... 8-9

REMOTE CONTROL VALVES ..... 8-11

HYDRAULIC FRONT POWER LIFT (HPL) ..... 8-11

ELECTRICAL EQUIPMENT ..... 8-12

MINIMUM TIGHTENING TORQUE OF SCREW CONNECTIONS ..... 8-13

MINIMUM TIGHTENING TORQUES OF SCREW CONNECTIONS ..... 8-14

**SECTION 9**

**CHECKLIST FOR 50-HOUR INITIAL INSPECTION**

**SECTION 10**

**INDEX**

# SECTION 1

## GENERAL INFORMATION AND SAFETY

### TO THE OWNER

#### GENERAL NOTES

These operating instructions have been produced to provide you with instructions for correctly running in, driving and operating as well as for maintaining your new tractor. Please therefore read through these operating instructions carefully. The tractor is intended for all standard agricultural work.

Do not hesitate to contact your authorised dealer if you ever have any questions relating to your tractor. The dealer has trained specialist staff, genuine spare parts and the technical equipment required to satisfy all your servicing requirements.

In terms of concept and design, this tractor has been designed for maximum performance, economic viability and user-friendliness in a wide range of applications. It has been carefully inspected in the factory and by your authorised dealer before being delivered to ensure that the machine is in optimum technical condition. To make sure it stays in this condition and always operates in a faultfree manner, it is important that you carry out the maintenance work described in Section 4 of this operating manual at the specified intervals.

#### STORING THE OPERATING MANUAL

There is a storage pocket for the operating manual behind the seat. The manual should always be stored there when not in use.

#### CLEANING THE TRACTOR

Your tractor is a state-of-the-art machine with sophisticated electronic controls. This should be borne in mind when cleaning the tractor, particularly if using a high pressure cleaner. Even though every precaution has been taken to protect electronic components and connections, the pressure generated by some of these machines is such that complete protection against water ingress cannot be guaranteed. When using a high-pressure cleaner, do not stand too close to the tractor and avoid directing the jet at electronic components, electrical connections, seals, filler caps, etc. Never direct a cold water jet at a hot engine or exhaust.

#### SAFETY

Page 1 - 7. to Page 1 - 12. cover the precautions which must be taken to ensure your own safety and that of others. Read the safety precautions and observe the advice given **before** operating the tractor.

#### FIRST 50 HOURS MAINTENANCE

The 50-hour maintenance reports can be found in section 9 at the back of this manual.

After 50 operating hours the tractor, together with this manual, should be taken to your dealer. The dealer will carry out the recommended 50-hour maintenance and fill in the maintenance reports (Page 9 - 1. and Page 9 - 3.). The first sheet (Page 9 - 1.) is the dealer's copy and should be removed by the dealer after the maintenance has been carried out. The second sheet (Page 9 - 3.) is your copy of the maintenance which has been carried out. **Ensure that you and the dealer sign both copies.**

#### SPARE PARTS

Your attention is drawn to the fact that only genuine spare parts have been tested by the manufacturer and have corresponding certification. Installing and/or using non-genuine spare parts can impair the function of the tractor and put its operational safety at risk. The manufacturer accepts no liability for damage caused by the use of non-genuine spare parts or additional equipment. Only use genuine spare parts from CNH Case IH. In some cases, the use of non-genuine spare parts will render certain authorisations for the tractor void.

Modifications may only be made to the tractor with the written approval of the manufacturer's customer service department.

#### WARRANTY

The warranty for your tractor is based upon the warranty legislation of your country and the contractual relationship with the dealer. However, the warranty shall expire if the tractor is not used, set up or maintained according to the instructions in the operating manual.

## END USER LICENCE AGREEMENT TERMS

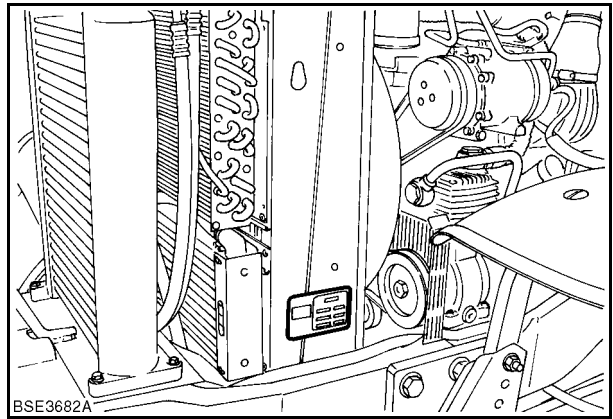
- You have acquired a device ("DEVICE") that includes software licensed by CHN America LLC from Microsoft Licensing, GP or its affiliates ("MS"). Those installed software products of MS origin, as well as associated media, printed materials, and "online" or electronic documentation ("SOFTWARE") are protected by international intellectual property laws and treaties. The SOFTWARE is licensed, not sold. All rights reserved.
- IF YOU DO NOT AGREE TO THIS END USER LICENSE AGREEMENT ("EULA"), YOU MUST NOT USE THE DEVICE OR COPY THE SOFTWARE. INSTEAD, PROMPTLY CONTACT CNH AMERICA LLC FOR INSTRUCTIONS ON RETURN OF THE UNUSED DEVICE(S) FOR A REFUND. **ANYANY USE OF SOFTWARE INCLUDING BUT NOT LIMITED TO USE OF THE DEVICE, WILL CONSTITUTE YOUR AGREEMENT TO THIS EULA (OR RATIFICATION OF ANY PREVIOUS CONSENT.)**
- **GRANTING OF SOFTWARE LICENSE.** This EULA grants you the following license: - You may use the SOFTWARE only on the DEVICE.
  - **NO FAULT TOLERANCE.** THE SOFTWARE HAS NO FAULT TOLERANCE. CNH AMERICA LLC HAS INDEPENDENTLY DETERMINED HOW TO USE THE SOFTWARE IN THE DEVICE, AND MSHAS RELIED UPON CNH AMERICA LLC TO CONDUCT SUFFICIENT TESTING TO DETERMINE THAT THE SOFTWARE IS SUITABLE FOR SUCH USE.
  - NO WARRANTIES FOR THE SOFTWARE. THE SOFTWARE is provided "AS IS" and with all possible faults. THE ENTIRE RISK AS TO SATISFACTORY QUALITY, PERFORMANCE, ACCURACY AND COMPLEXITY (INCLUDING LACK OF NEGLIGENCE) LIES WITH YOU. ALSO, THERE IS NO WARRANTY AGAINST INTERFERENCE WITH YOUR USE OF THE SOFTWARE OR AGAINST INFRINGEMENTS. **IF YOU HAVE RECEIVED ANY WARRANTIES REGARDING THE DEVICE OR THE SOFTWARE, THOSE WARRANTIES DO NOT ORIGINATE FROM AND ARE NOT BINDING ON MS.**
  - No liability for certain damages. **EXCEPT AS PROHIBITED BY LAW, MS SHALL HAVE NO LIABILITY FOR ANY INDIRECT, SPECIAL, CONSEQUENTIAL OR INCIDENTAL DAMAGES ARISING FROM OR IN CONNECTION WITH THE USE OR PERFORMANCE OF THE SOFTWARE. THIS LIMITATION SHALL APPLY EVEN IF ANY REMEDY FAILS IN ITS ESSENTIAL PURPOSE. IN NO EVENT SHALL MS BE LIABLE FOR ANY AMOUNT IN EXCESS OF US DOLLARS TWO HUNDRED AND FIFTY (250.00).**
  - **Limitations on reverse engineering, decompilation, and disassembly.** You may not reverse engineer, decompile, or disassemble the SOFTWARE, except and only to the extent that such activity is expressly permitted by law notwithstanding this limitation.
  - **SOFTWARE TRANSFER ALLOWED BUT WITH RESTRICTIONS.** You may permanently transfer rights under this EULA only as part of a permanent sale or a permanent transfer of the DEVICE, and only if the recipient agrees to this EULA. If the SOFTWARE is an upgrade, any transfer must also include all prior versions of the SOFTWARE.
  - **EXPORT LIMITATIONS.** You acknowledge that SOFTWARE is subject to US export jurisdiction. You agree to comply with all applicable international and national laws that apply to the SOFTWARE, including the US Export Administration Regulations, as well as end-user, end-use and destination restrictions issued by the USA and other governments. For additional information see <http://www.microsoft.com/exporting/>.



**VEHICLE IDENTIFICATION**

The tractor and its major components are identified using serial numbers and/or manufacturing codes. These serial numbers and/or manufacturing codes are needed by the dealer for ordering spare parts and for service interventions. They also allow the tractor to be identified in the event of theft.

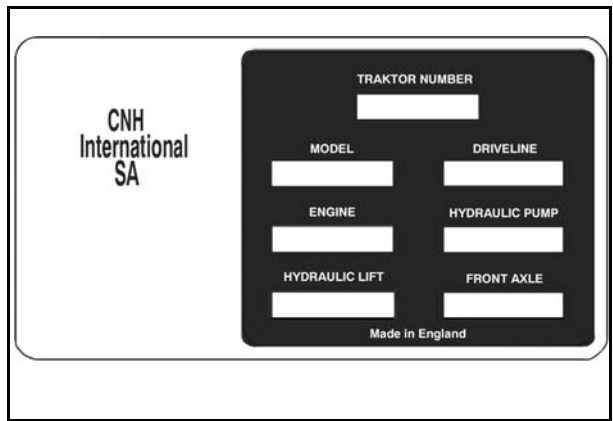
The following description provides the locations of the identification data.



1

**Vehicle identification plate**

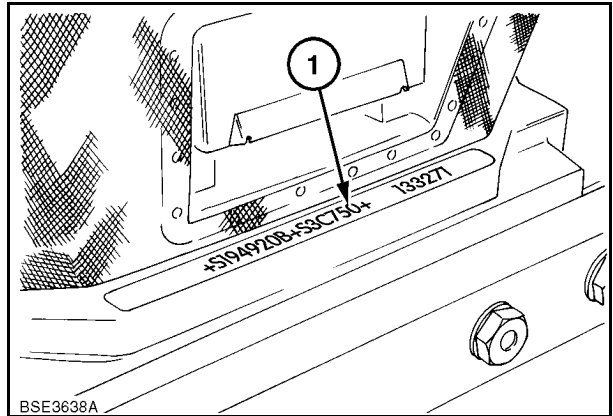
The tractor's type plate (1) is located on the left-hand radiator support. Please enter the information on the type plate reproduced below.



2

**Identification of the tractor**

The serial number and model identification details are stamped on to the top of the front support (1). These numbers also appear on the tractor's type plate.



3

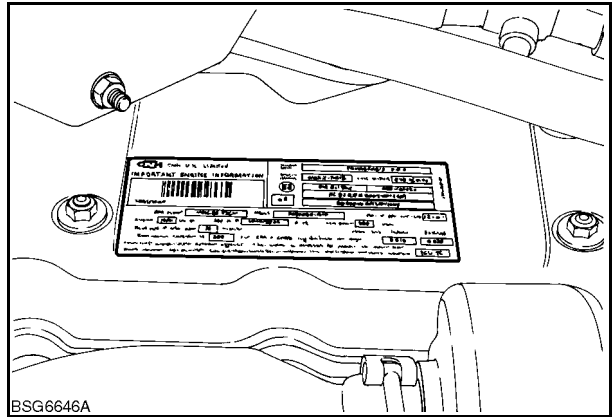
### Engine number

The serial number and date code are stamped on to the engine plate.

The plate is fitted above the engine on the cylinder head cover. The plate also provides information on engine settings and compliance with emission regulations where required

Enter the details in the following boxes so that you can refer to them at any time.

Engine serial no.

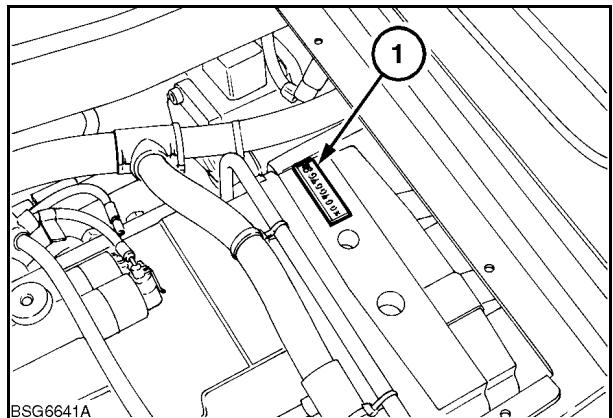


4

### Identification of the gearbox

The factory plate and serial number (1) can be found at the top on the gearbox housing. Access to the number can be gained by removing the plate in the floor of the cab as shown in the illustration. This number is repeated on the vehicle identification plate. Enter the details in the following boxes so that you can refer to them at any time

Gearbox number.....

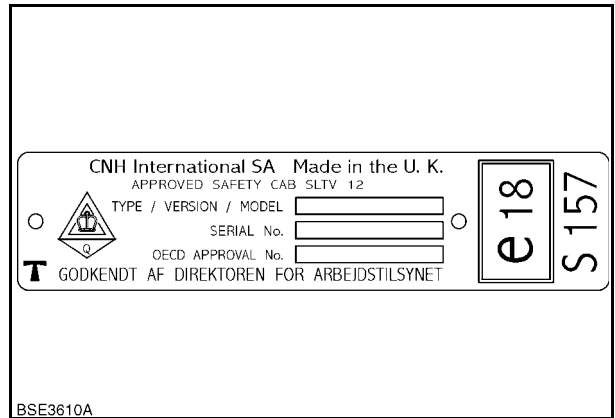


5

**Identification of the cab**

The serial number and other details can be seen on the OECD authorisation plate. This plate is located on the right-hand side of the cab trim panel below the rear windscreen. Enter the cab serial number below for easy reference.

Cab serial no. ....

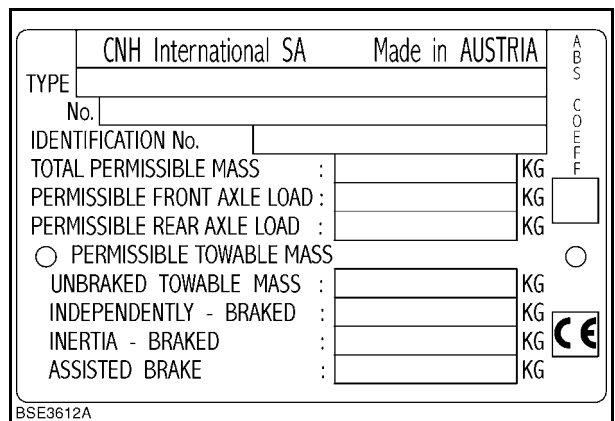


6

**Details on vehicle weight**

The vehicle weight plate contains important details on the permissible total weight of the tractor and trailers and/or attached equipment. This plate can be found on the right-hand side of the cab trim panel, below the rear window.

It gives the permissible maximum weights which must not be exceeded to avoid impairing the tractor's operating safety. **ECOLOGY AND THE ENVIRONMENT**



7

## ECOLOGY AND THE ENVIRONMENT

Soil, air and water are all vital elements for agriculture and for life in general. In cases where legislation governing the handling of particular substances required by sophisticated technology has not been prescribed, common sense should be exercised when using and disposing of chemical and petrochemical products.

The following recommendations may be helpful:

- Familiarise yourself with the legislation applying in your country and make sure you understand it.
- In cases where no legislation yet exists, make sure you obtain the supplier's information for the oil, filters, batteries, fuel, antifreeze, cleaning agent etc. with regard to their effects on people and the environment and how these products should be safely stored, used and disposed of. Agricultural consultants will also be able to help you in many cases.

### USEFUL HINTS

1. Avoid filling tanks using unsuitable containers or fuel delivery systems which are pressurised and therefore cause spillage.
2. Generally speaking, you should not allow oils, fuels, acids, solvents etc. to come into contact with skin. . Most of these substances contain elements which are hazardous to health.
3. Modern oils contain additives. Do not burn contaminated fuels and/or used oil in conventional heating systems.
4. Avoid spillage of engine coolant, engine/gearbox/hydraulic oil, brake fluids etc. Do not mix discharged brake fluids or fuels with lubricants. Store these in a safe place until such time as they can be disposed of in accordance with local regulations.
5. Modern coolant additives, i.e. antifreeze and other additives, should be replaced every two years. They must not be allowed to enter the ground but must be collected and disposed of safely.
6. Do not open up the air conditioning system. It contains gases which must not be allowed to escape into the atmosphere. Your dealer or air conditioning specialist will have a special extractor for this purpose and must always recharge the system.
7. Repair leaks or defects in the engine cooling system or hydraulics immediately.
8. Do not increase the pressure in a pressurised

circuit because the parts could explode.

9. When welding, protect hoses, since these could be damaged by splashes, which could in turn lead to leaks developing (oil, coolant).

## SAFETY PRECAUTIONS

The best operator is a careful operator. Most accidents can be avoided by observing certain precautions. To avoid accidents, read and observe the following precautions **before** driving, operating or servicing the tractor. Equipment should only be operated by those persons who are responsible for it and who have received appropriate instruction.

### SAFETY INFORMATION

In this manual you will find text preceded by the words **NOTE**, **ATTENTION**, **IMPORTANT**, **CAUTION**, **WARNING** or **DANGER**. The meaning of these texts is as follows:

#### MACHINE SAFETY

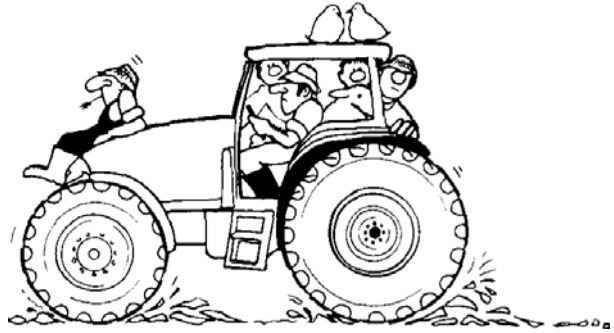
**NOTE:** THIS TEXT INDICATES THE CORRECT OPERATING TECHNIQUE OR PROCEDURE.

**WARNING:** THIS TEXT WARNS THE OPERATOR OF POSSIBLE MACHINE DAMAGE WHICH MAY OCCUR IF A CERTAIN PROCEDURE IS NOT FOLLOWED.

**IMPORTANT:** THIS TEXT TELLS THE READER ABOUT SOMETHING THEY NEED TO KNOW IN ORDER TO AVOID MINOR DAMAGE TO THE MACHINE WHICH MAY OCCUR IF A CERTAIN PROCEDURE IS NOT FOLLOWED.

#### THE TRACTOR

1. Before using the tractor, read the operating manual carefully. Insufficient understanding of operations may result in accidents.
2. Only appropriately qualified and trained persons should be allowed to operate the tractor.
3. To avoid falls, use the handrails and footboards to climb in and out of the tractor. Keep the footboards and platform free of mud and earth debris.
4. Replace all missing, illegible or damaged safety labels.
5. Keep safety labels clean.



6. Do not allow anyone other than the operator to drive the tractor. This is only permitted for driver training or instruction. For these situations, the cab can be fitted with an extra seat. Never carry passengers in the tractor.
7. Always keep children away from the tractor and other agricultural equipment.
8. Do not attempt to undertake modifications to the tractor or any of its components or functions (or allow anyone else to do so) without first consulting your dealer.
9. Fit all protective fixtures before starting the engine or operating the tractor.

#### DRIVING THE TRACTOR

1. Always start and drive the tractor from the driver's seat.
2. Be aware of other road users when driving on public roads. Pull up from time to time to allow vehicles behind you to pass. Observe the speed limit for agricultural tractors in your country.
3. When driving on public roads, use an all-round light and/or warning plate for slow-moving vehicles to indicate to other road users that the vehicle is moving slowly and poses a potential hazard.

**IMPORTANT:** Local regulations should be observed regarding the use of all-round lights.

4. Dip your headlights whenever you encounter another vehicle at night. Ensure that the lights are set so that oncoming drivers are not dazzled.
5. Reduce speed before braking or making a turn. For an emergency stop, brake with both wheels at the same time. When travelling at road speeds or on journeys on public roads, ensure that both brake pedals are interlocked to ensure the function of the trailer brakes and that the

**Buy Now**



Our support email:

[ebooklibonline@outlook.com](mailto:ebooklibonline@outlook.com)