

# Contents

---

## 1 GENERAL INFORMATION

Personal safety .....	1-1
Product identification .....	1-3
Note to the Owner .....	1-4
Tractor intended use.....	1-5
Manual storage .....	1-5
Declaration of conformity .....	1-6
Product identification .....	1-7
Component location .....	1-9

## 2 SAFETY INFORMATION

Safety rules .....	2-2
ROPS and CSF.....	2-6
SAFETY DECALS .....	2-8

## 3 CONTROLS/INSTRUMENTS

### ACCESS TO OPERATOR'S PLATFORM

Tractor access .....	3-1
----------------------	-----

### OPERATOR'S SEAT

Overview .....	3-2
Control identification.....	3-4

### INSTRUCTOR'S SEAT

Overview .....	3-7
----------------	-----

### FORWARD CONTROLS

STEERING COLUMN .....	3-9
FRONT CONSOLE.....	3-12
PEDAL CONTROLS.....	3-14

### LH SIDE CONTROLS

EMERGENCY BRAKE .....	3-17
-----------------------	------

### RH SIDE CONTROLS

ARMREST CONSOLE .....	3-18
ARMREST COMPARTMENT.....	3-26
Adjusting the armrest console .....	3-29

### REARWARD CONTROLS

FENDER CONSOLE .....	3-31
AUTOMATIC TEMPERATURE CONTROLS.....	3-37
AUTOMATIC TEMPERATURE CONTROL SYSTEM .....	3-40
VENTILATION .....	3-41

### OVERHEAD CONTROLS

LAMPS .....	3-43
-------------	------

### EXTERIOR CONTROLS

REAR FENDER .....	3-45
-------------------	------

### INSTRUMENT CLUSTER

Overview .....	3-46
GAUGES .....	3-47
DEDICATED DISPLAY .....	3-49

---

KEYPAD .....	3-51
STATUS AND WARNING ICONS .....	3-54
PROGRAMMABLE DISPLAY .....	3-56
DISPLAY SETTINGS .....	3-76
OPERATOR PREFERENCES .....	3-86
ICON LEGEND .....	3-96

## 4 OPERATING INSTRUCTIONS

### COMMISSIONING THE UNIT

Before starting the engine .....	4-1
----------------------------------	-----

### STARTING THE UNIT

NORMAL ENGINE STARTING .....	4-5
Cold temperature operation .....	4-8

### STOPPING THE UNIT

STOPPING THE ENGINE .....	4-11
---------------------------	------

### MOVING THE UNIT

Powershift transmission .....	4-12
Transmission default gears .....	4-13
Setting default gears .....	4-17
Best practices for prolonged transmission life .....	4-20
Transmission disengages; neutral icon flashes .....	4-21
Automatic productivity management (APM) .....	4-22
Mechanical front drive (MFD) .....	4-31
Differential lock system .....	4-35
Suspended axle .....	4-38
Ride control .....	4-46
Constant engine speed .....	4-49
Electronic end of row system .....	4-51

## 5 TRANSPORT OPERATIONS

### ROAD TRANSPORT

Tractor warning lamps .....	5-2
Tractor warning lamps .....	5-3
Safe transport speed .....	5-4

### SHIPPING TRANSPORT

Securing the tractor for shipping .....	5-5
---	-----

### RECOVERY TRANSPORT

Safety rules .....	5-6
TOWING THE TRACTOR .....	5-7

## 6 WORKING OPERATIONS

### GENERAL INFORMATION

Overview .....	6-1
----------------	-----

### REAR PTO

Safety rules .....	6-3
Connecting the PTO .....	6-7
Interchangeable PTO shaft .....	6-8
Reversible PTO shaft .....	6-14
PTO operation .....	6-16

---

PTO fender switch operation .....	6-20
Auto PTO operation .....	6-21

## THREE POINT HITCH

Identification .....	6-26
Link adjustment .....	6-27
Hitch high clearance adjustment .....	6-31
Hydraulic links .....	6-34
Sway limiter adjustment .....	6-35
Lower link block adjustment .....	6-36
Mechanical float adjustment .....	6-38
Hitch operation .....	6-39
Hitch remote switch operation .....	6-45
Position control operation .....	6-46
Load control operation .....	6-48
Slip control operation .....	6-50
Hitch set point .....	6-53

## FRONT HITCH

Overview .....	6-56
Hitch operation .....	6-58

## DRAWBARS AND TOWING ATTACHMENTS

Drawbar capacity/position .....	6-62
Adjusting the drawbar .....	6-64

## TRAILER HITCHES

Clevis and special drawbars .....	6-66
Automatic trailer hitch .....	6-68
Auto pickup hitch operation .....	6-71
Manual trailer hitch .....	6-73

## AUXILIARY POWER CONNECTIONS

Auxiliary power and lighting .....	6-76
Cab power connections .....	6-78

## HYDRAULIC REMOTE CONTROL VALVES

Valve couplers and connections .....	6-80
Motor return circuit .....	6-83
Power beyond circuit .....	6-84
Overview .....	6-86
Operating the controls .....	6-87
Changing the functional mode .....	6-90
Remote hydraulic auto mode .....	6-94
Auto depth control .....	6-97

## BALLASTING THE TRACTOR

Guidelines .....	6-101
Tire load and inflation charts .....	6-105
Weights, cast metal and liquid .....	6-106
Wheel slip and power hop performance .....	6-113

## MECHANICAL FRONT DRIVE (MFD) AXLES

Tire combinations and tread positions .....	6-117
Steering and oscillation stops .....	6-122

---

## REAR AXLE

Rear wheel installation .....	6-125
Rear wheel tread settings .....	6-127
Rear wheel tread settings .....	6-142

## 7 MAINTENANCE

### GENERAL INFORMATION

Safety rules .....	7-1
Opening the hood .....	7-2
Battery access and service .....	7-4
Tire and rim service .....	7-5
Tractor jacking points .....	7-7
Capacities .....	7-9
Consumables .....	7-11
Electrical component location .....	7-15
Electrical system specification .....	7-19
Maintenance chart notes .....	7-20

### MAINTENANCE CHART

Maintenance Chart .....	7-20
-------------------------	------

#### At warning message display

Air filter service icon/message .....	7-22
---------------------------------------	------

#### First 10 to 50 hours

Differential and planetary oil .....	7-23
Wheel bolt torque .....	7-24
Weight bolt torque .....	7-25

#### Every 10 hours or daily

Engine oil level .....	7-26
Transmission oil level .....	7-27
Engine coolant level .....	7-28
Engine auxiliary fuel filter .....	7-29
Air tank - Drain fluid .....	7-30
Rear hitch and front axle .....	7-31

#### Every 50 hours

Engine primary fuel filter .....	7-32
----------------------------------	------

#### Every 300 hours

Battery water level (Note E) .....	7-33
Engine air intake hoses .....	7-34
Engine coolant level - deaeration tank .....	7-35
Engine oil and filter .....	7-36
Wheel bolt torque .....	7-38
Weight bolt torque .....	7-39
Front axle (Note A) .....	7-40
Rear hitch (Note A) .....	7-47
Fuel tank .....	7-49
Differential and planetary oil level (Note B) .....	7-50
Transmission oil pressure oil pressure .....	7-52
Reversible 1000 RPM PTO shaft (Note D) .....	7-54

---

## Every 600 hours

Engine coolant antifreeze protection .....	7-55
Engine coolant filter .....	7-56
Engine coolant hoses and clamps.....	7-57
Engine primary fuel filter.....	7-58
Changeable PTO internal splines .....	7-60

## Every 1200 hours or annually

Differential and planetary oil.....	7-61
Engine air filters .....	7-65
Engine air precleaner.....	7-69

## Every 1500 hours

Transmission oil .....	7-70
Transmission oil filter .....	7-72
Regulated transmission filter .....	7-73

## Every 2100 hours

Engine coolant.....	7-74
Fuel injector nozzles (Note C).....	7-77
Engine valve adjustment (Note C).....	7-77

## Every 3000 hours

Engine vibration damper (Note C).....	7-78
Emergency steering system.....	7-79

## As required

Vehicle fire prevention .....	7-81
Vehicle fire prevention .....	7-82
Cab air filter .....	7-83
Engine primary air filter .....	7-86
Grille screen and radiator area .....	7-89
Fuel tank vent filter .....	7-91
Transmission clutch and accumulator .....	7-91
Tire pressure .....	7-91
Fan belt.....	7-92
Spark arresting muffler .....	7-93
Remote valve collection bottle.....	7-94
Emergency brake lever .....	7-95
Engine auxiliary fuel filter .....	7-96
Cab fabric and carpet.....	7-98
Seat belt .....	7-99

## STORAGE

TRACTOR STORAGE.....	7-100
REMOVAL FROM STORAGE.....	7-100

## ELECTRICAL SYSTEM

Radio or audio system.....	7-101
Battery removal and installation .....	7-102
Auxiliary battery connections .....	7-104
Head light - Replace.....	7-105
Flood and work light .....	7-111

---

Fender tail light and warning light .....	7-113
Roof front warning and work light .....	7-115
Roof rear warning light .....	7-118
High intensity work light .....	7-120
Side turn indicator light .....	7-122
Rotating beacon light .....	7-124
Number plate light .....	7-125
Interior light - Replace .....	7-126

## 8 TROUBLESHOOTING

### ALARM(S)

Display warnings .....	8-1
------------------------	-----

## 9 SPECIFICATIONS

ENGINE - General specification .....	9-2
POWER TRAIN - General specification .....	9-4
POWER TRAIN - General specification .....	9-7
TRAVELLING - Speeds .....	9-10
Vehicle dimensions and shipping weight .....	9-19
Maximum operating weight .....	9-21

## 10 ACCESSORIES

Front wheel fenders .....	10-1
Farming system displays .....	10-7
Chemical tank mounting .....	10-10
Loader connection and operation .....	10-12
Trailer brake connections .....	10-13
General accessories .....	10-18

# 1 - GENERAL INFORMATION

## Personal safety



THIS SAFETY ALERT SYMBOL INDICATES IMPORTANT SAFETY MESSAGES IN THIS MANUAL. WHEN YOU SEE THIS SYMBOL, CAREFULLY READ THE MESSAGE THAT FOLLOWS AND BE ALERT TO THE POSSIBILITY OF DEATH OR SERIOUS INJURY.




Throughout this manual and on the machine's safety decals, you will find precautionary statements: DANGER< WARNING or CAUTION followed by special instructions or ISO two panel safety pictorial symbols. These precautions are intended for your personal safety.

Failure to follow the DANGER, WARNING or CAUTION instructions may result in death or serious bodily injury.

DANGER, WARNING or CAUTION are defined as follows:

- **DANGER:** Indicates an immediate hazardous situation that, if not avoided, will result in death or serious injury. The color associated with Danger is RED.
- **WARNING:** Indicates a potentially hazardous situation that, if not avoided, could result in death or serious injury. The color associated with Warning is ORANGE.
- **CAUTION:** Indicates a potentially hazardous situation that, if not avoided, could result in minor or moderate injury. It may also be used to alert against unsafe practices. The color associated with Caution is YELLOW.

ISO two panel pictorial symbol decals are defined as follows:

- The first panel indicates the nature of the hazard.
- The second panel indicates the appropriate avoidance of the hazard
- Background color is YELLOW.
- Prohibition symbols such as   and  if used are RED.



IMPROPER OPERATION OF THIS MACHINE CAN CAUSE DEATH OR SERIOUS INJURY. BEFORE USING THIS MACHINE, MAKE CERTAIN THAT EVERY OPERATOR:

- Is instructed in safe and proper use of the machine.
- Reads and understands the Manual(s) pertaining to the machine.
- Reads and understands ALL Safety Decals on the machine.
- Clears the area of other persons.
- Learns and practices safe use of machine controls in a safe, clear area before operating this machine on a job site.

It is your responsibility to observe pertinent laws and regulations and follow CNH America LLC instructions on machine operation and maintenance.

## **CNH America LLC technical manuals**

Manuals are available from your Dealer for the operation, service and repair of your machine. For prompt convenient service, contact your Dealer for assistance in obtaining the manuals for your machine.

You Dealer can expedite your order for Operators Manuals, Parts Catalogs, Repair Manuals and maintenance records.

Always give the Machine Name, Model and P.I.N. (product identification number) of your machine so your Dealer can provide the correct manuals for your machine.

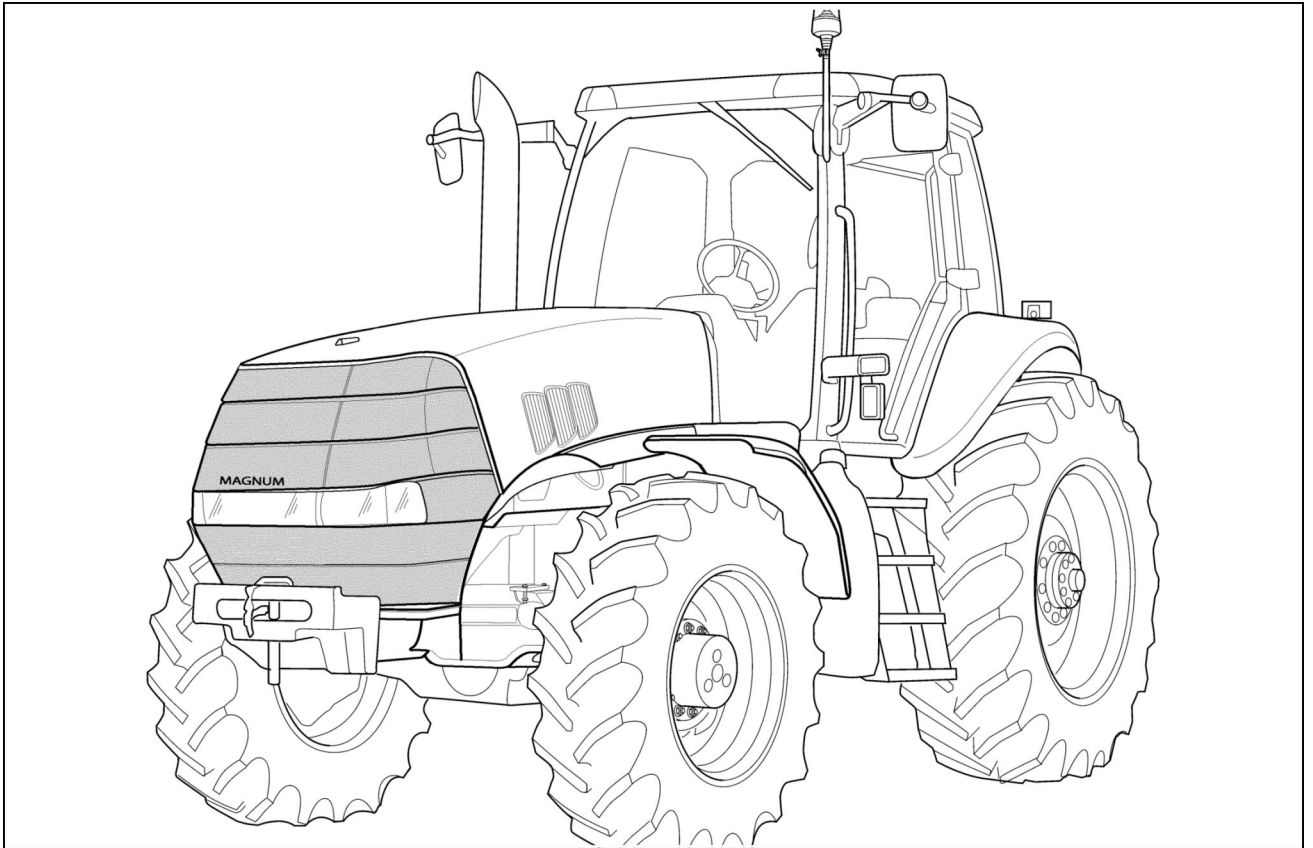
The company is continually striving to improve its products and therefore reserves the right to make improvements and changes when it becomes practical and possible to do so, without incurring any obligation to make changes or additions to the equipment sold previously.

All data given in this manual is subject to production variations. **IMPORTANT: OPERATING AND SERVICE MESSAGES DISPLAYED ON THE ELECTRONIC OPERATING PANEL MAY VARY FROM WHAT IS SHOWN IN THE OPERATOR'S MANUAL. SHOULD THIS OCCUR ADHERE TO THE LATEST INSTRUCTION ON THE ELECTRONIC OPERATING PANEL.**

Dimensions and weights are approximate only and the illustrations do not necessarily show the machine in standard condition. For exact information about any particular machine, please consult your dealer.



## Product identification



RCPH08CCH006FAB 1



CNH America LLC  
Racine, WI  
U.S.A.

Dealer stamp



## Note to the Owner

This manual contains important information about the safe operation, adjustment and routine maintenance of your Magnum series tractor. The manual is divided into ten chapters as outlined in the table of contents. Refer to the index at the end of this manual for locating specific items about your tractor.

Do NOT operate or permit anyone to operate or service this machine until you or the other persons have read this manual. Use only trained operators who have demonstrated the ability to operate and service this machine correctly and safely.

This Operator's Manual is to be stored in the manual compartment equipped on this machine. Make sure this manual is in good condition. Contact your dealer to obtain additional manuals. Contact your dealer for any further information or assistance about your machine. Your dealer has approved service parts. Your dealer has technicians with special training that know the best methods of repair and maintenance for your tractor.

## Tractor intended use

This tractor is equipped solely for use in customary agricultural operation (intended use).

Use in any other way is considered as contrary to the intended use. The manufacture accepts no liability for any damage or injury resulting from this misuse and these risks must be born solely by the user.

Compliance with and strict adherence to the conditions of operation, service and repair as specified by the manufacturer also constitute essential elements for the intended use.

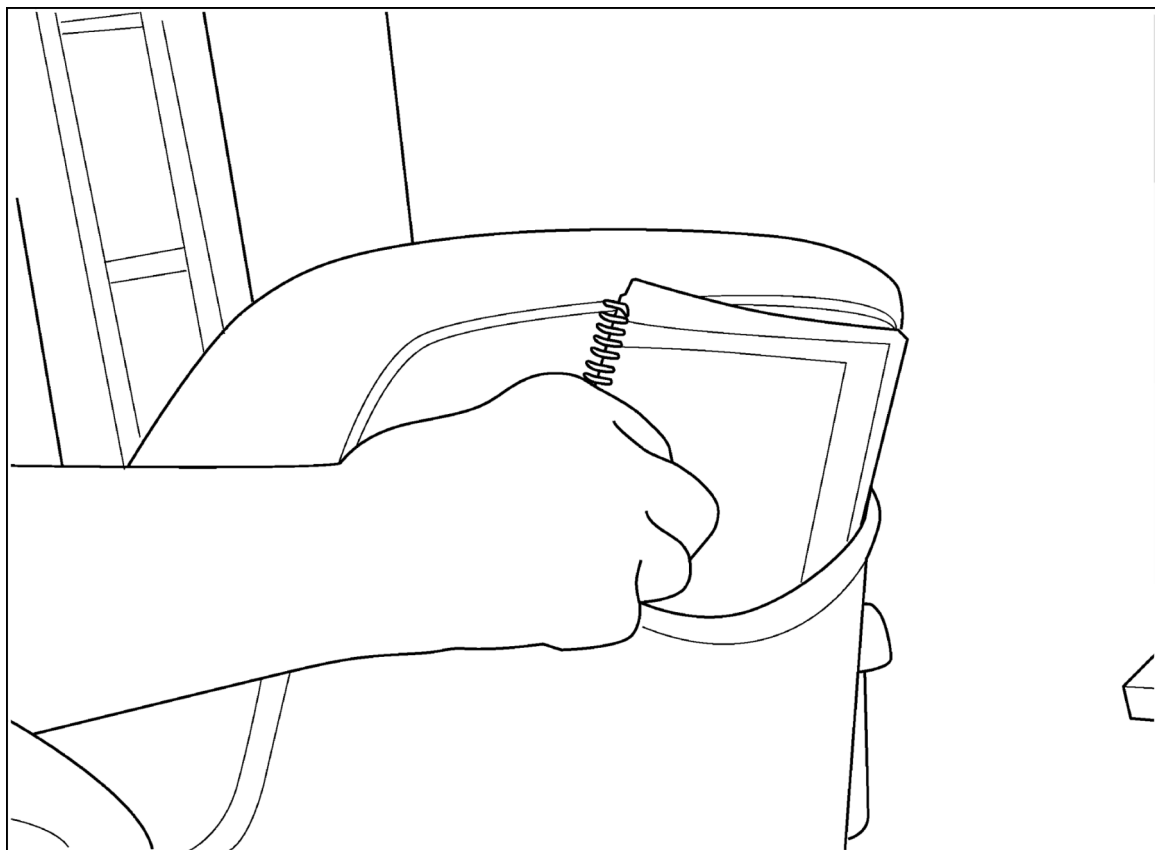
This tractor must be operated, serviced and repaired only by persons familiar with all its particular characteristics

and acquainted with the relevant safety rules (accident prevention).

The accident prevention regulations, all other generally recognized regulations on safety and occupational medicine and the road traffic regulations must be observed at all times.

Any arbitrary modifications carried out on the tractor will relieve the manufacturer of all liability for any resulting damage or injury.

## Manual storage



RCPH08CCH002FAB 1

Keep the Operator's Manual in the storage compartment provided on your tractor. The Operator's Manual must be available for use by all operators.

The right hand and left hand side of the tractor used in this manual are the same as your right hand and left hand when sitting in the tractor seat looking forward.

## Declaration of conformity

This tractor complies with the provisions of directive 89/336/EEC Electromagnetic Compatibility.

### EMC - supplementary information

Safety information for the supplementary installation of electrical and electronic appliances and/or components.

This tractor is equipped with electronic constituents and component parts whose function can be influenced by electromagnetic radiations of other appliances. Such influences can cause hazards for persons if the following safety information is not taken into account:

1. For supplementary installation of electrical and electronic appliances and/or constituents on the tractor with a connection to the onboard system, the user HAS to verify whether the installation causes disturbances to the electronics on the tractor or other constituents. This particularly applies to:
  - A. Powershift Control Button
  - B. Instrument Cluster

Also it has to be taken into account that the supplementary installed electrical and electronic components comply with the EMC Directive 89/336/EEC in the respective current version and that they are CE marked.

For the supplementary installation of mobile communication systems (i.e. radio communication, mobile telephone) the following additional requirements have to be fulfilled:

2.
  - A. Only devices with an approval complying with the valid national regulations must be installed.
  - B. The devices must be firmly installed.
  - C. The operation of portable or mobile devices within the cab of the tractor is ONLY permitted if the device has a fixed outside antenna.
  - D. The transmitting part shall be installed separately to the tractor electronics.
  - E. Installation of the antenna must be carried out by a professional and the antenna must have a good ground connection between the antenna and the tractor ground.

For the correct size cabling, installation and the maximum permissible current supply, the installation instructions of the tractor manufacturer have to be considered additionally.

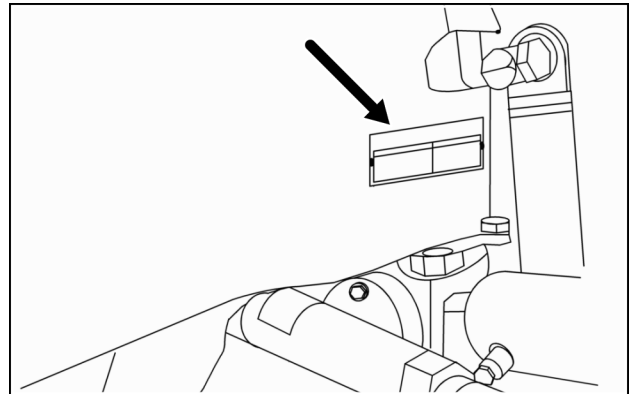
## Product identification

### Tractor model and product identification number

Model :

PIN

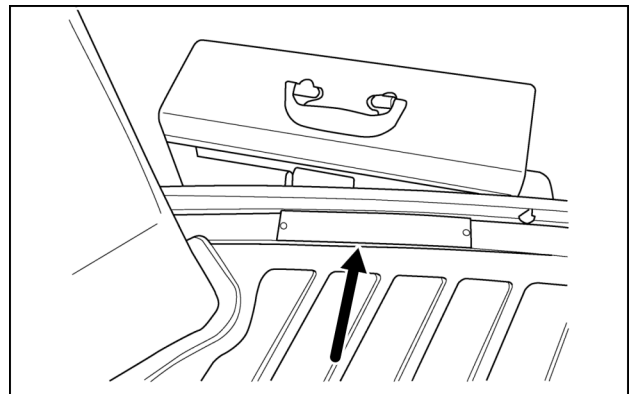
**NOTE:** Located on right hand front casting.



RCPH08CCH486AAB 1

### Roll over protection system (ROPS) serial number

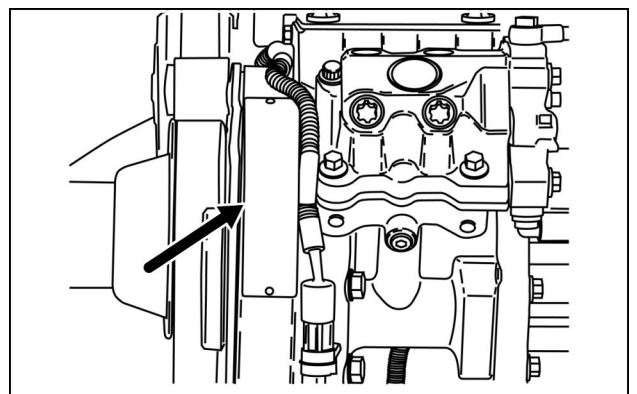
**NOTE:** Located on the right hand cab floor.



RCPH08CCH482AAB 2

### Engine serial number

**NOTE:** Located on the front left hand side of the engine..



RCPH08CCH479AAB 3

**Buy Now**



Our support email:

[ebooklibonline@outlook.com](mailto:ebooklibonline@outlook.com)